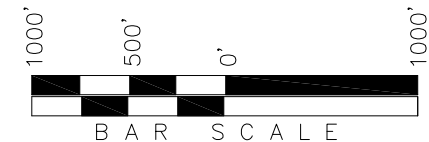
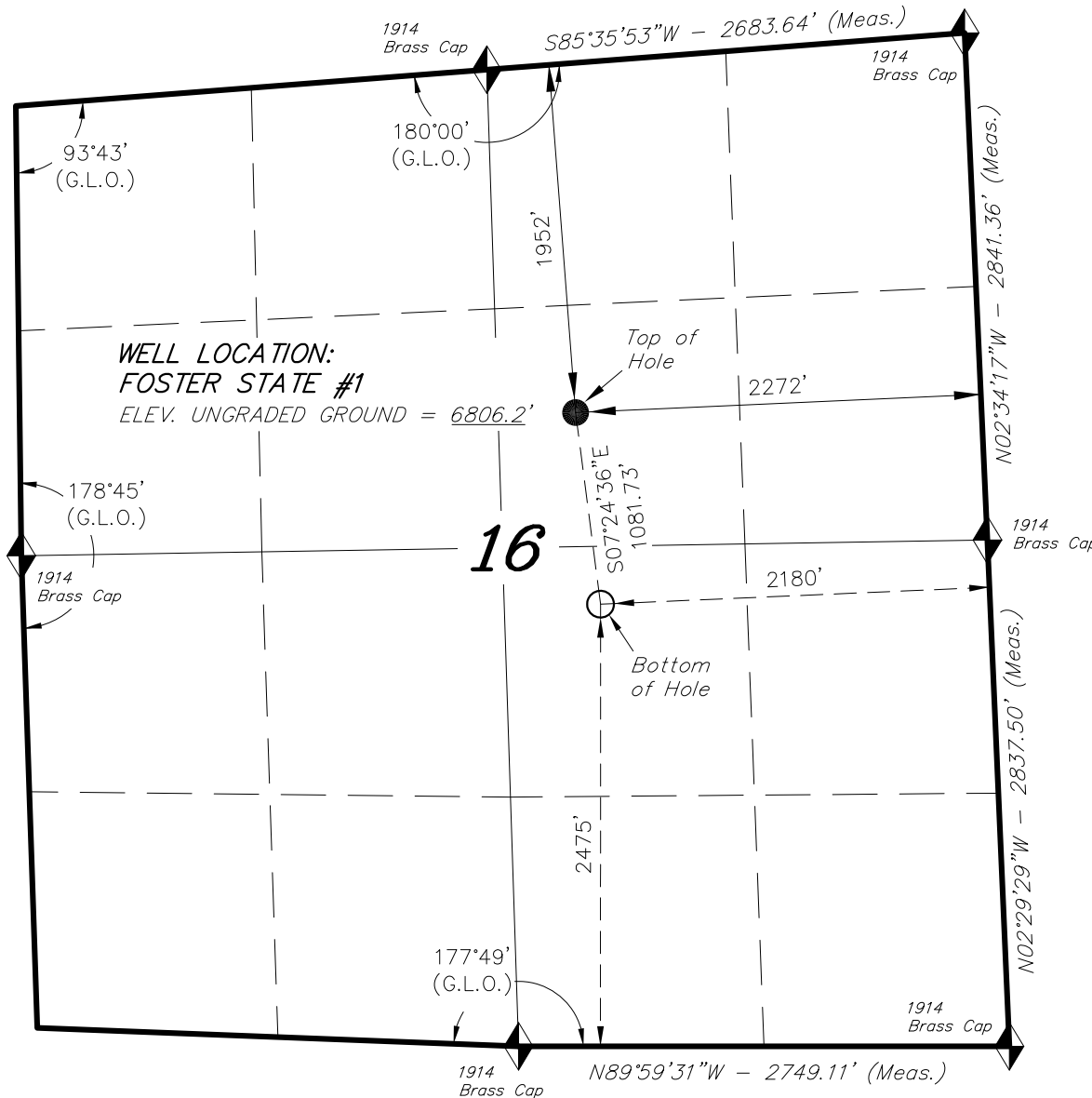


T4N, R91W, 6th P.M.

ROBERT L. BAYLESS PRODUCER LLC

WELL LOCATION, FOSTER STATE #1, LOCATED AS SHOWN IN THE SW 1/4 NE 1/4 OF SECTION 16, T4N, R91W, 6th P.M., MOFFAT COUNTY, COLORADO.

TARGET BOTTOM HOLE, FOSTER STATE #1, LOCATED AS SHOWN IN THE NW 1/4 SE 1/4 OF SECTION 16, T4N, R91W, 6th P.M. MOFFAT COUNTY, COLORADO.



= SECTION CORNERS LOCATED

NOTES:

1. WELL FOOTAGES ARE MEASURED AT RIGHT ANGLES TO THE SECTION LINES.
2. G.P.S. OPERATOR: K.G. STEWART (PDOP) - 1.7

BASIS OF BEARINGS & BASIS OF ELEVATION

BASIS OF BEARINGS; BEARINGS ARE BASED ON GLOBAL POSITIONING SATELLITE OBSERVATIONS.

BASIS OF ELEV; Elevations are based on an N.G.S. OPUS Correction.

LOCATION: LAT. 40°19'36.70" LONG. 107°36'10.87"

(Tristate Aluminum Cap) NAVD 88 Elev. 7003.1'

THIS IS TO CERTIFY THAT THE ABOVE FIELD SURVEY WAS PREPARED FROM FIELD NOTES OF ACTUAL SURVEYS MADE BY ME OR UNDER MY SUPERVISION AND THAT THE SAME ARE TRUE AND CORRECT TO THE BEST OF MY KNOWLEDGE AND BELIEF.

REGISTERED LAND SURVEYOR
REGISTRATION NO. 30125
STATE OF COLORADO

NAD 83 (SURFACE LOCATION)	NAD 83 (BOTTOM HOLE LOCATION)
LAT: = 40°19'19.38" (40.322050)	LAT: = 40°19'08.78" (40.319132)
LONG: = 107°36'48.69" (107.613525)	LONG: = 107°36'46.89" (107.612403)
NAD 27 (SURFACE LOCATION)	NAD 27 (BOTTOM HOLE LOCATION)
LAT: = 40°19'19.47" (40.322076)	LAT: = 40°19'08.88" (40.319132)
LONG: = 107°36'46.45" (107.612904)	LONG: = 107°36'44.65" (107.612403)

TRI STATE LAND SURVEYING & CONSULTING

180 NORTH VERNAL AVE. - VERNAL, UTAH 84078

(435) 781-2501

DATE SURVEYED: 05-12-15	SURVEYED BY: K.G.S.	SHEET 1
DATE DRAWN: 05-13-15	DRAWN BY: F.T.M.	
REVISED:	SCALE: 1" = 1000'	