



Kerr-McGee Oil & Gas Onshore LP

A subsidiary of Anadarko Petroleum Corporation

1099 18th Street
Denver, CO 80202
720-929-6000

June 19, 2015

Matt Lepore
Director, Colorado Oil and Gas Conservation Commission
Department of Natural Resources
The Chancery Building
1120 Lincoln Street, Suite 801
Denver, CO 80203

Re: **30 Day Certification Letter - 318A.e**
POWERS 2G-27HZ (Doc No. 400839952)
Township 2 North, Range 65 West
Section 22: NENE
Unit Acreage: 480 acres
Unit Spacing: 02N65W Sec 15 S2SE
02N65W Sec 22 E2
02N65W Sec 27 N2NE
Weld County, Colorado

Dear Director Lepore:

Kerr McGee Oil and Gas Onshore LP ("KMG") hereby certifies that KMG owns one hundred percent (100%) of the leasehold interest in the mineral rights in the proposed spacing unit. KMG hereby respectfully requests approval of this boundary well.

If you have any questions or issues regarding this permit, please contact our office.

Sincerely,

Kerr-McGee Oil and Gas Onshore LP

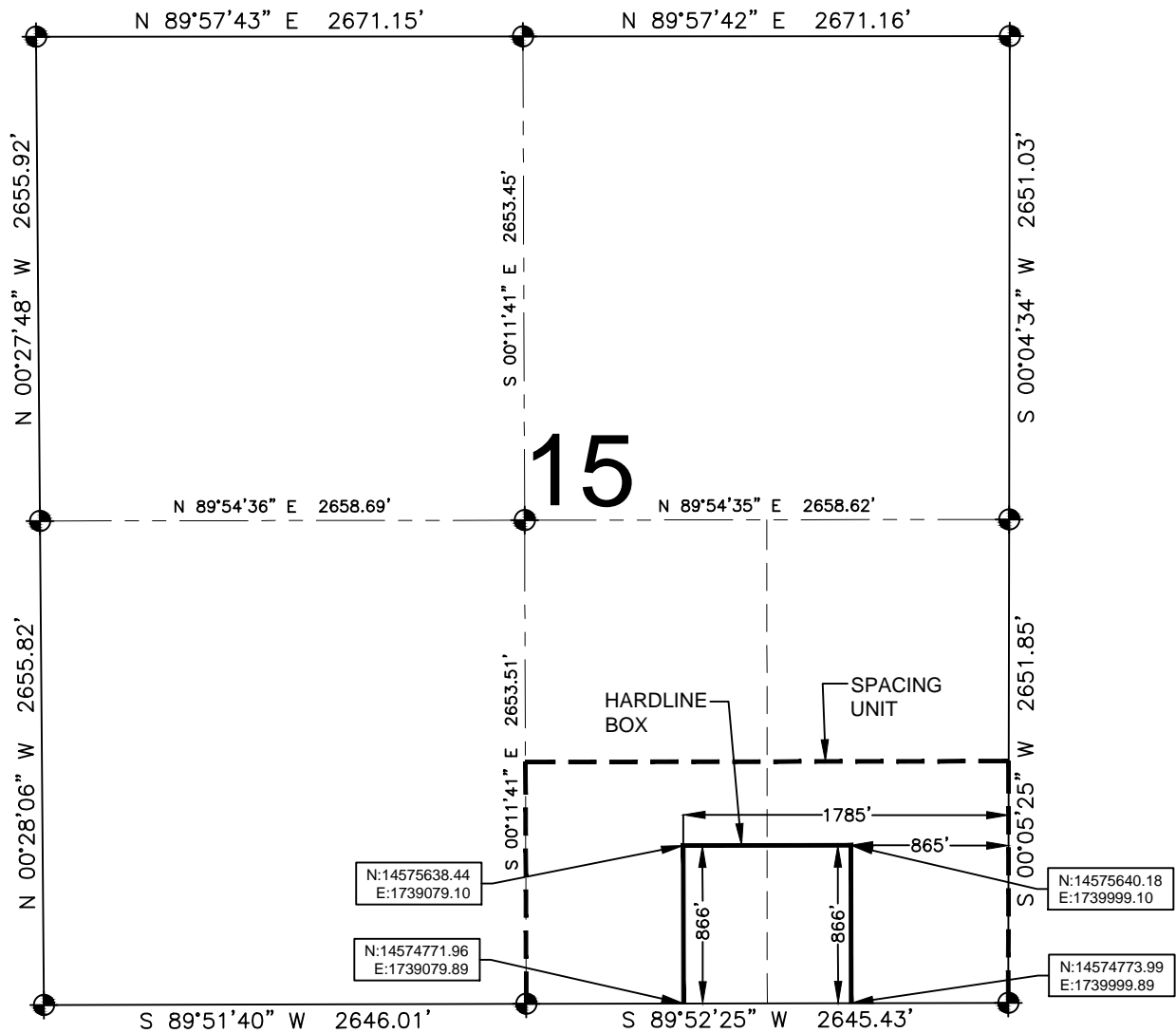
A handwritten signature in blue ink that reads "RPowers".

Ronett Powers
Regulatory Analyst II

Enclosure

HARDLINE EXHIBIT: POWERS 2G-27HZ

SECTION 15, TOWNSHIP 2 NORTH, RANGE 65 WEST, 6TH P.M.



LEGEND

- = EXISTING MONUMENT ● = BOTTOM HOLE
● = PROPOSED HEEL BH = BOTTOM HOLE
○ = CALCULATED POSITION

HEEL LOCATION

WGS84 UTM 13N
LATITUDE= 40.131242°
LONGITUDE= 104.646108°

LATITUDE= 40°07'52.472"
LONGITUDE= 104°38'45.988"

BOTTOM HOLE LOCATION

NAD83 STATE PLANE CO N
LATITUDE= 40.115887°
LONGITUDE= 104.646285°

LATITUDE= 40°06'57.193"
LONGITUDE= 104°38'46.626"

QRT/QRT SECTIONS WITHIN PATH OF THE HARDLINE

SWSE, SEC. 15
SESE, SEC. 15

AVAILABLE FOOTAGE

7026'

NOTES:

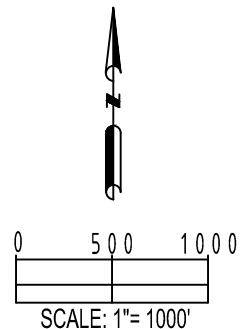
- THIS DOCUMENT IS NOT A LAND SURVEY PLAT OR IMPROVEMENT SURVEY PLAT. THIS DOCUMENT DOES NOT REFLECT A FIELD SURVEY. SECTION BREAKDOWN, MONUMENTATION AND HORIZONTAL POSITIONS SHOWN ARE BASED ON THE HEEL AND BOTTOM HOLE LOCATION PROVIDED BY ANADARKO PETROLEUM CORPORATION.
- COORDINATES ARE PROVIDED IN WGS84, UTM ZONE 13N.

PREPARED BY:



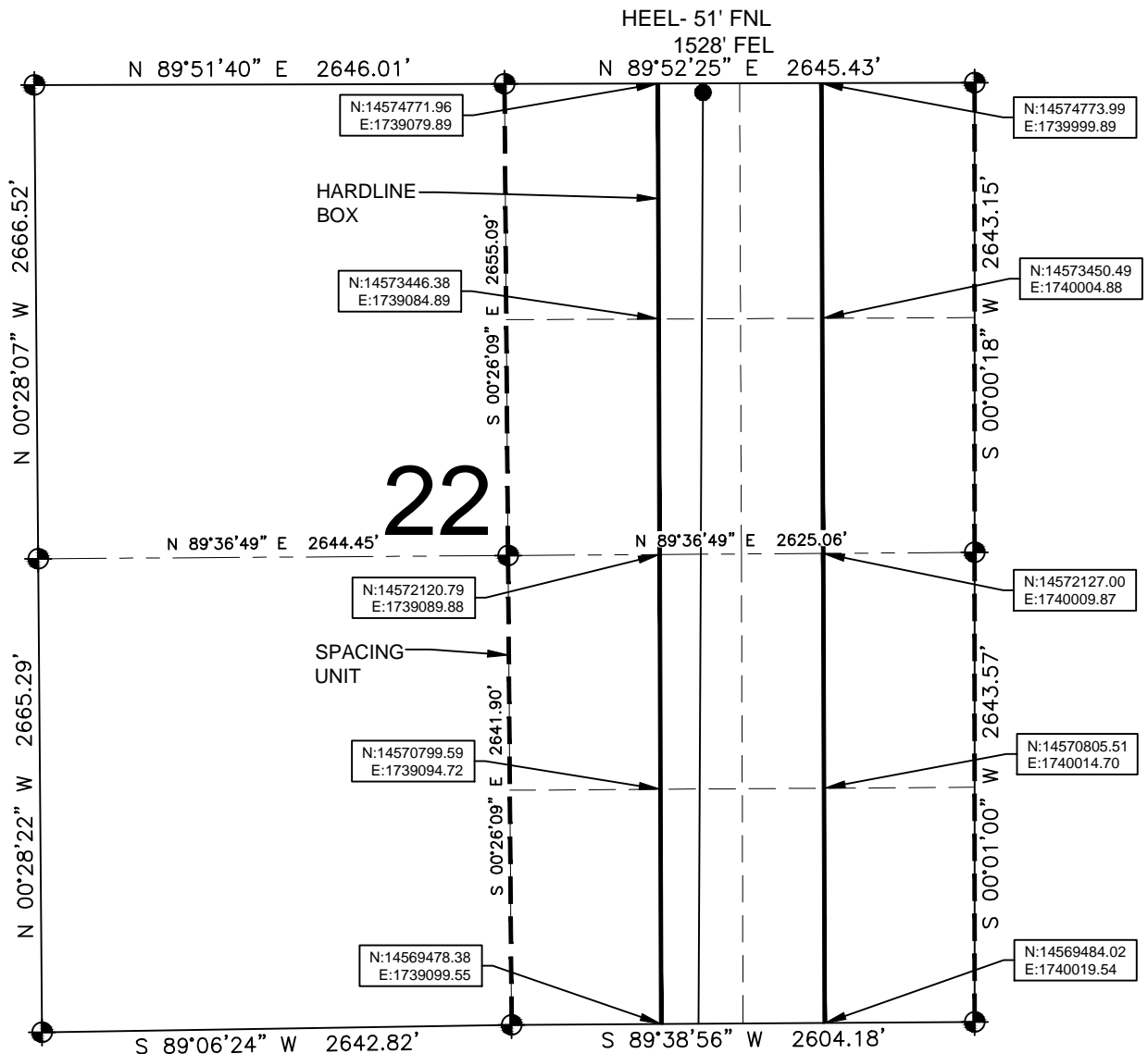
SHEET 1 OF 3

DRAWING DATE:	HEEL LOCATION:
04-03-15	NW 1/4 NE 1/4,
BY: SMF	SEC. 22, T2N, R65W, 6TH P.M.
CHECKED: TJN	WELD COUNTY, COLORADO



HARDLINE EXHIBIT: POWERS 2G-27HZ

SECTION 22, TOWNSHIP 2 NORTH, RANGE 65 WEST, 6TH P.M.



LEGEND

- = EXISTING MONUMENT ● = BOTTOM HOLE
● = PROPOSED HEEL BH = BOTTOM HOLE
○ = CALCULATED POSITION

QRT/QRT SECTIONS WITHIN PATH OF THE HARDLINE

NWNE, SEC. 22 NENE, SEC. 22
SWNE, SEC. 22 SENE, SEC. 22
NWSE, SEC. 22 NESE, SEC. 22
SWSE, SEC. 22 SESE, SEC. 22

NOTES:

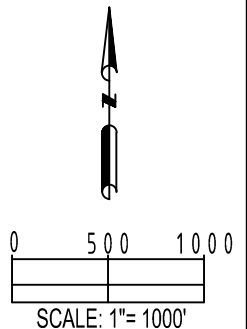
- THIS DOCUMENT IS NOT A LAND SURVEY PLAT OR IMPROVEMENT SURVEY PLAT. THIS DOCUMENT DOES NOT REFLECT A FIELD SURVEY. SECTION BREAKDOWN, MONUMENTATION AND HORIZONTAL POSITIONS SHOWN ARE BASED ON THE HEEL AND BOTTOM HOLE LOCATION PROVIDED BY ANADARKO PETROLEUM CORPORATION.
- COORDINATES ARE PROVIDED IN WGS84, UTM ZONE 13N.

PREPARED BY:



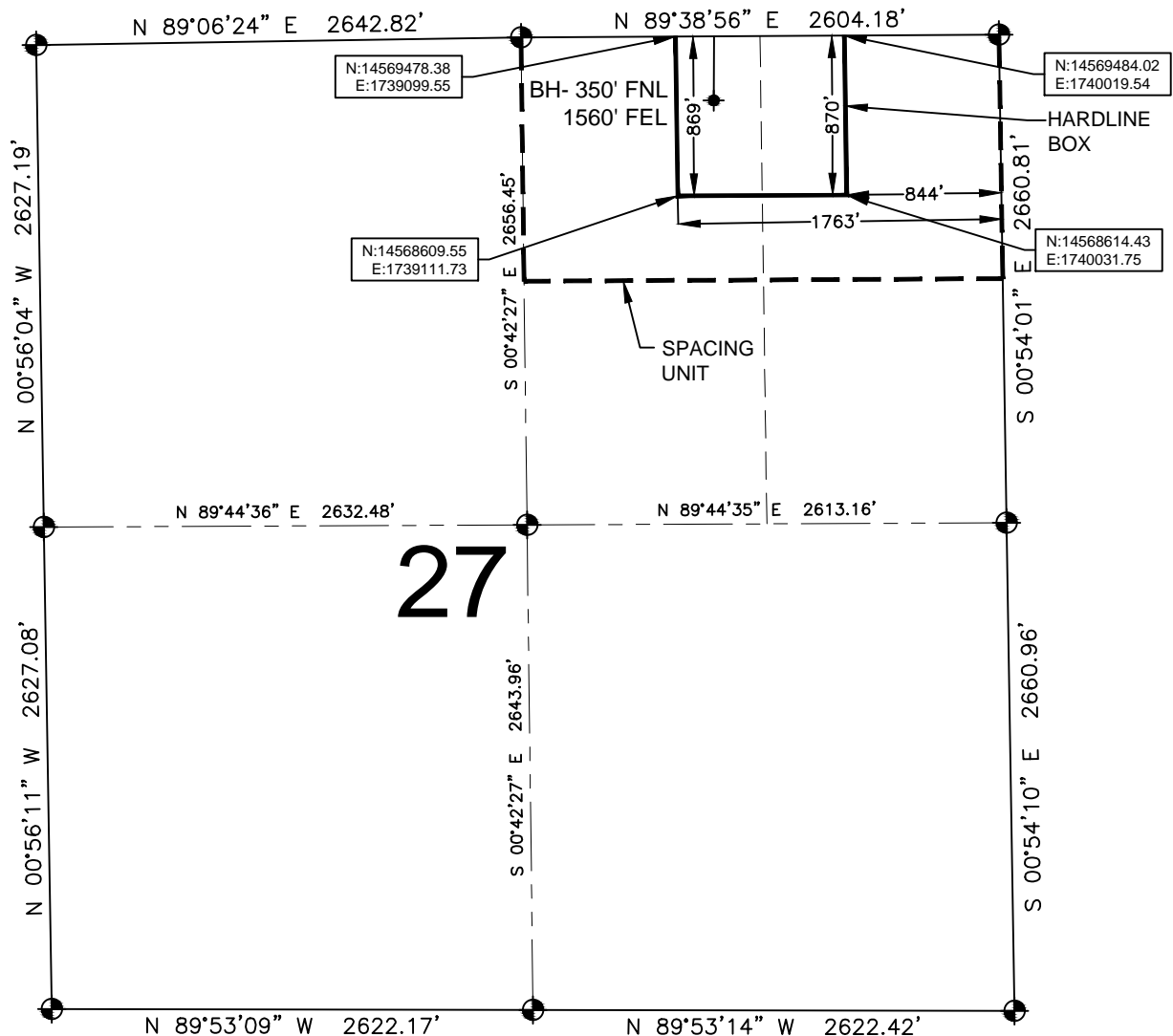
SHEET 2 OF 3

DRAWING DATE: 04-03-15
HEEL LOCATION: NW 1/4 NE 1/4, SEC. 22, T2N, R65W, 6TH P.M. WELD COUNTY, COLORADO
BY: SMF
CHECKED: TJN



HARDLINE EXHIBIT: POWERS 2G-27HZ

SECTION 27, TOWNSHIP 2 NORTH, RANGE 65 WEST, 6TH P.M.



LEGEND

- = EXISTING MONUMENT
- = PROPOSED HEEL
- = CALCULATED POSITION
- ✦ = BOTTOM HOLE
- BH = BOTTOM HOLE

QRT/QRT SECTIONS WITHIN PATH OF THE HARDLINE

NWNE, SEC. 27
NENE, SEC. 27

NOTES:

- THIS DOCUMENT IS NOT A LAND SURVEY PLAT OR IMPROVEMENT SURVEY PLAT. THIS DOCUMENT DOES NOT REFLECT A FIELD SURVEY. SECTION BREAKDOWN, MONUMENTATION AND HORIZONTAL POSITIONS SHOWN ARE BASED ON THE HEEL AND BOTTOM HOLE LOCATION PROVIDED BY ANADARKO PETROLEUM CORPORATION.
- COORDINATES ARE PROVIDED IN WGS84, UTM ZONE 13N.