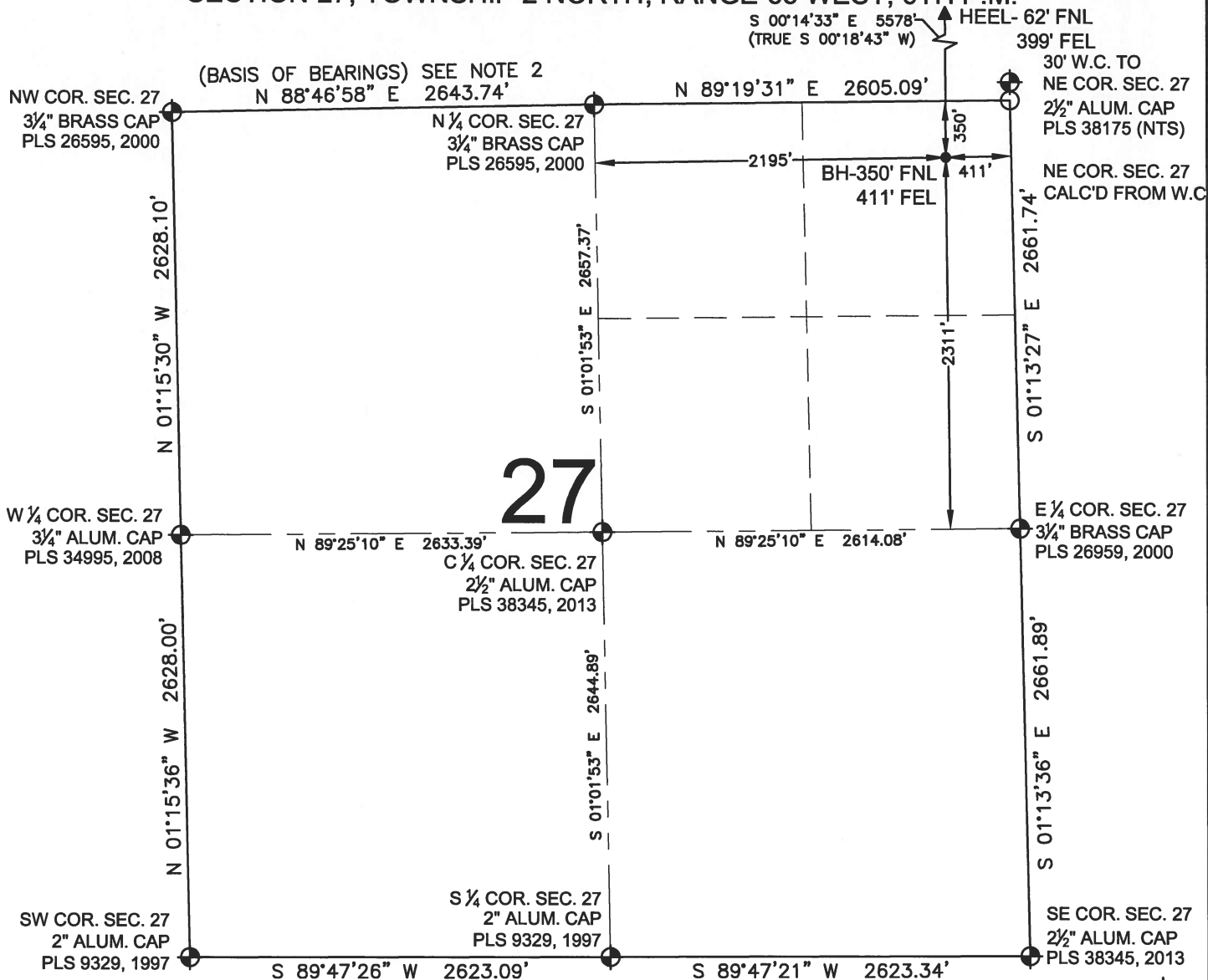


WELL LOCATION CERTIFICATE: POWERS 1N-27HZ

SECTION 27, TOWNSHIP 2 NORTH, RANGE 65 WEST, 6TH P.M.



LEGEND

- = EXISTING MONUMENT
- = PROPOSED WELL
- BH = BOTTOM HOLE
- ◆ = BOTTOM HOLE
- ▲ = HEEL LOCATION
- = CALCULATED POSITION

NOTES:

1. THIS FIELD SURVEY CONFORMS TO THE MINIMUM STANDARDS SET BY THE C.O.G.C.C., RULE NO. 215
2. BEARINGS ARE BASED ON THE ASSUMPTION THAT THE SOUTH LINE OF THE SOUTHWEST QUARTER OF SECTION 22, BEARS S88°46'58\"W BETWEEN THE MONUMENTS DESCRIBED HEREON.
3. GRID DISTANCES ARE SHOWN, AS MEASURED IN THE FIELD, WITH TIES TO WELLS MEASURED PERPENDICULAR TO SECTION LINES. TO GET GROUND DISTANCES MULTIPLY THE SHOWN DISTANCE BY 1.000272228.
4. ALL LINES SHOWN THAT ARE WITHOUT DIMENSION SHOULD BE CONSIDERED SCALED AND ONLY REPRESENT A GRAPHICAL DEPICTION OF THE APPROXIMATE LOCATION OF SAID LINE.
5. FIELD VERIFICATION OF MONUMENTS COMPLETED ON MARCH 5, 2015. WELL STAKING COMPLETED ON OCTOBER 14, 2014.

SHEET 2 OF 2

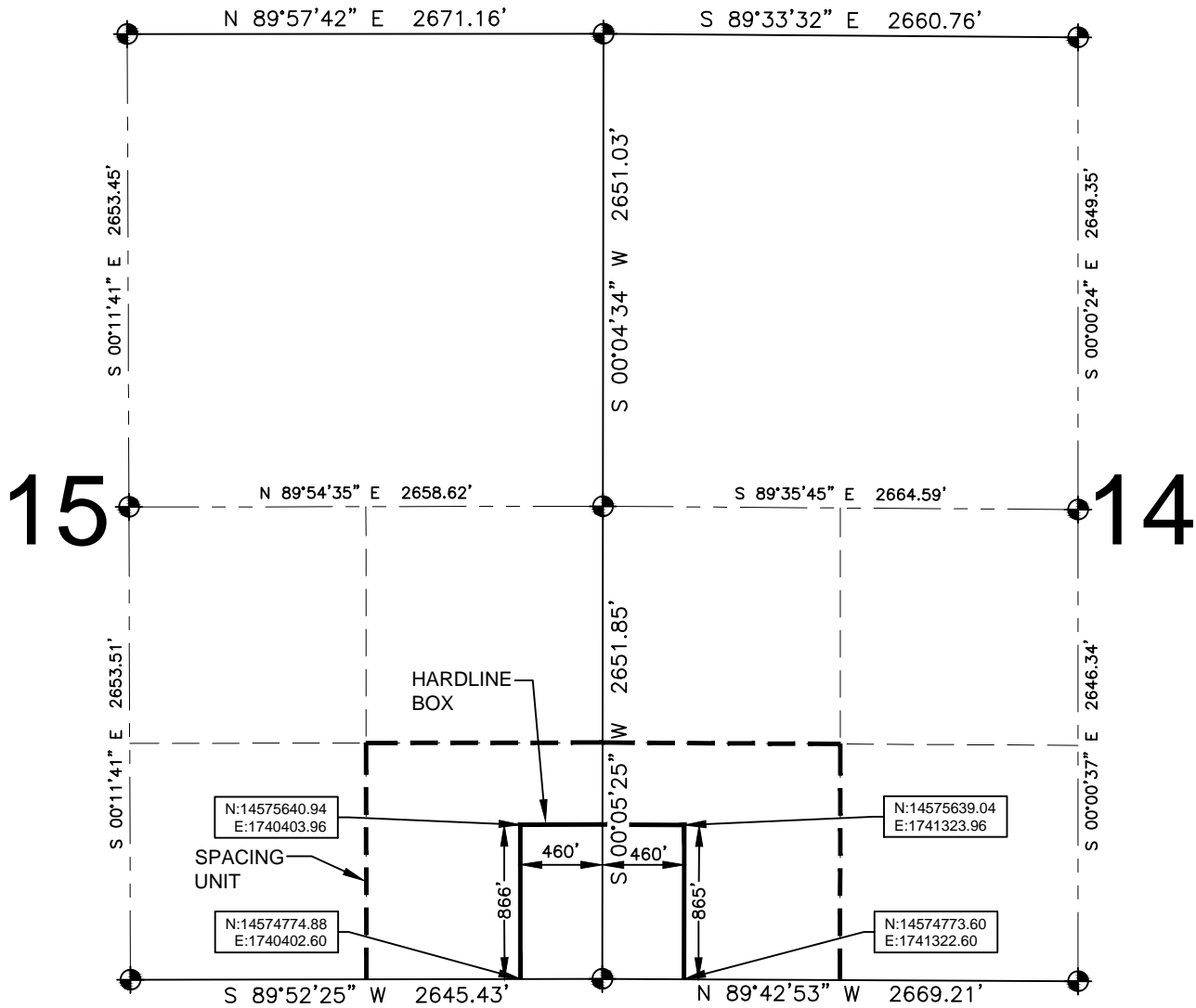
PREPARED BY:	FIELD DATE:	SURFACE LOCATION:
PFS	10-14-14	NE 1/4 NE 1/4,
Petroleum Field Services, LLC	DRAWING DATE:	SEC. 22, T2N, R65W, 6TH P.M.
7535 Hilltop Circle	04-02-15	WELD COUNTY, COLORADO
Denver, CO 80221	BY: SMF	CHECKED: TJN

JACOB S. FRISCH, PLS 38149
DATE: 04-07-15
JOB NO: B14.APC.0538
FOR AND ON BEHALF OF PFS, LLC

NOTICE: ACCORDING TO COLORADO LAW YOU MUST COMMENCE ANY LEGAL ACTION BASED UPON ANY DEFECT IN THIS SURVEY WITHIN THREE YEARS AFTER YOU FIRST DISCOVER SUCH DEFECT. IN NO EVENT MAY ANY ACTION BASED UPON ANY DEFECT IN THIS SURVEY BE COMMENCED MORE THAN TEN YEARS FROM THIS SAID DATE OF THIS CERTIFICATION SHOWN HEREON.

POWERS 1N-27HZ

SECTION 15, TOWNSHIP 2 NORTH, RANGE 65 WEST, 6TH P.M.



LEGEND

- = EXISTING MONUMENT
- = PROPOSED HEEL
- = CALCULATED POSITION
- = BOTTOM HOLE
- BH = BOTTOM HOLE

HEEL LOCATION

WGS84 UTM 13N
LATITUDE= 40.131206°
LONGITUDE= 104.642069°

LATITUDE= 40°07'52.343"
LONGITUDE= 104°38'31.448"

BOTTOM HOLE LOCATION

NAD83 STATE PLANE CO N
LATITUDE= 40.115894°
LONGITUDE= 104.642177°

LATITUDE= 40°06'57.218"
LONGITUDE= 104°38'31.837"

QRT/QRT SECTIONS WITHIN PATH OF THE HARDLINE

SESE, SEC. 15
SWSW, SEC. 14

AVAILABLE FOOTAGE

7022'

NOTES:

- THIS DOCUMENT IS NOT A LAND SURVEY PLAT OR IMPROVEMENT SURVEY PLAT. THIS DOCUMENT DOES NOT REFLECT A FIELD SURVEY. SECTION BREAKDOWN, MONUMENTATION AND HORIZONTAL POSITIONS SHOWN ARE BASED ON THE HEEL AND BOTTOM HOLE LOCATION PROVIDED BY ANADARKO PETROLEUM CORPORATION.
- COORDINATES ARE PROVIDED IN WGS84, UTM ZONE 13N.