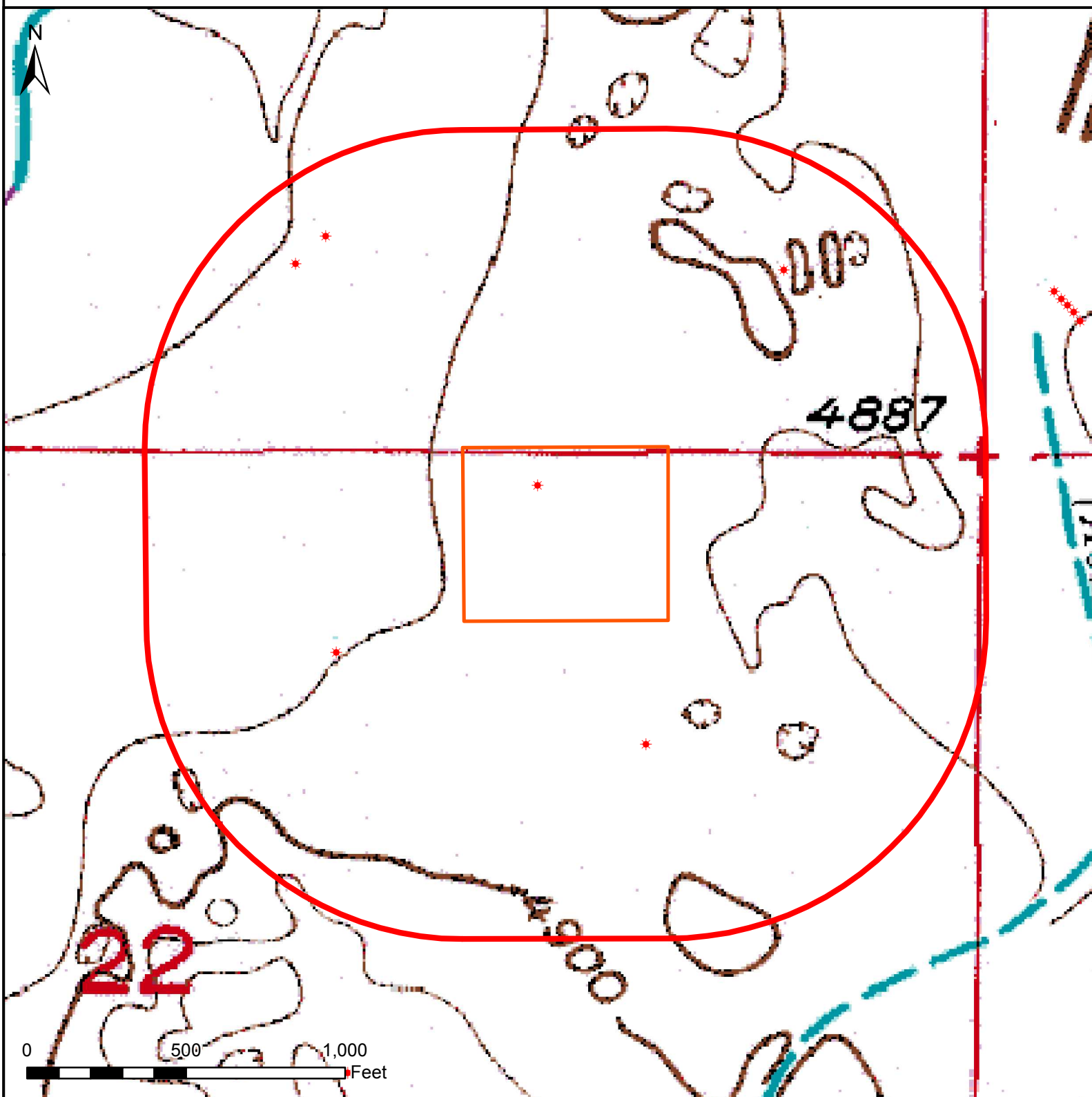


# HYDROLOGY MAP

## POWERS 27N-27HZ



### Nearest Surface Water Feature

Canal: 1190' E Elev: 4888'  
Loc Elev: 4893'

All measurements are made from  
edge of disturbed area.

### Legend

- GWA\_MissingPads
- 1000' buffer
- Well pad (proposed)
- Existing oil/gas well (COGCC)



Date created: 6/3/2015  
Created by: APC Regulatory GIS  
Scale: 1:5,000  
Projection: NAD83 UTM 13N