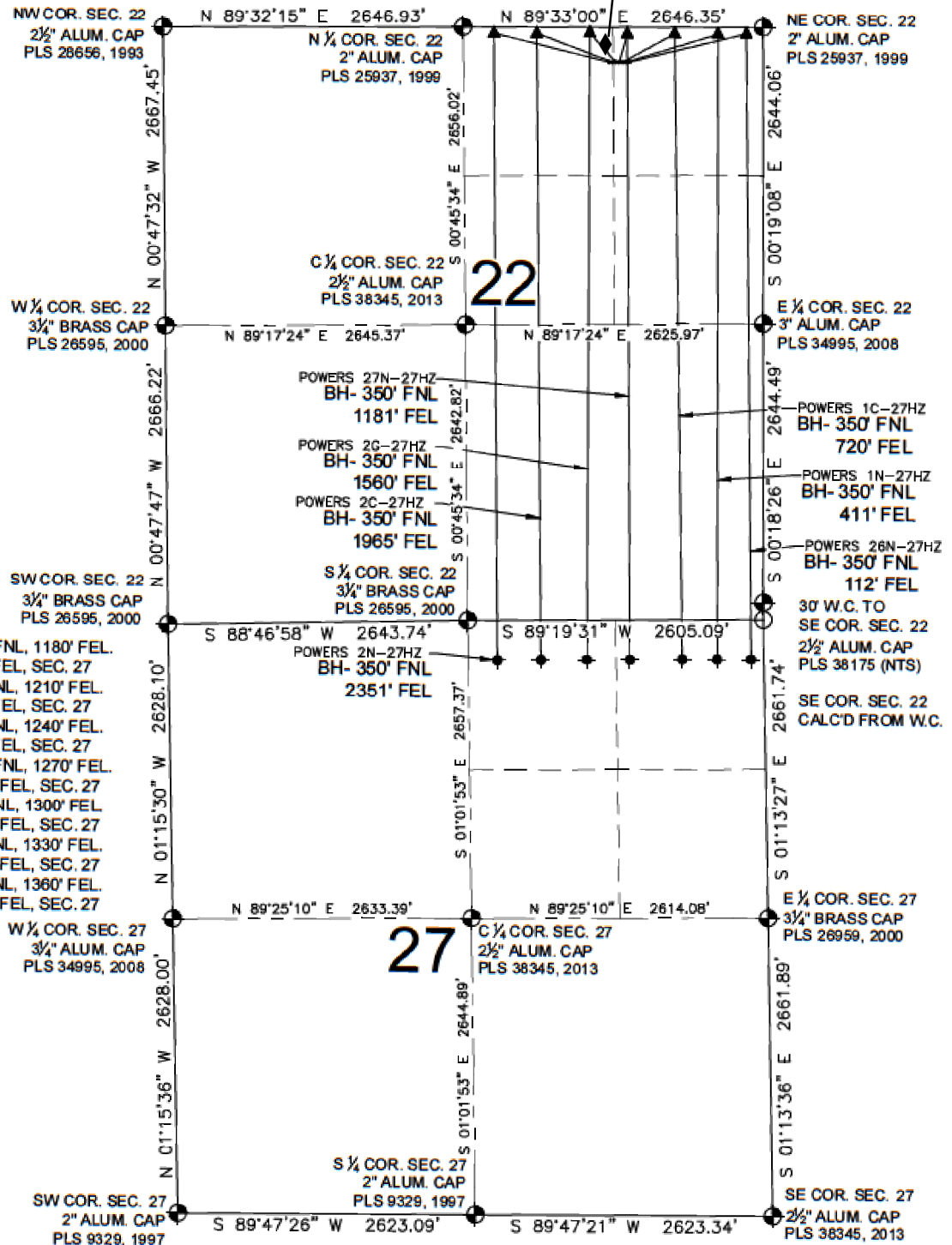


POWERS 27N-27HZ MULTI-WELL PLAN

ROBERT POWERS
X 22-27

SECTION 22, TOWNSHIP 2 NORTH, RANGE 65 WEST, 6TH P.M.



NOTES:

POWERS 26N-27HZ TO BE AT 310' FNL, 1180' FEL.
 BOTTOM HOLE AT 350' FNL & 112' FEL, SEC. 27
 POWERS 1N-27HZ TO BE AT 310' FNL, 1210' FEL.
 BOTTOM HOLE AT 350' FNL & 411' FEL, SEC. 27
 POWERS 1C-27HZ TO BE AT 310' FNL, 1240' FEL.
 BOTTOM HOLE AT 350' FNL & 720' FEL, SEC. 27
 POWERS 27N-27HZ TO BE AT 310' FNL, 1270' FEL.
 BOTTOM HOLE AT 350' FNL & 1181' FEL, SEC. 27
 POWERS 2G-27HZ TO BE AT 310' FNL, 1300' FEL.
 BOTTOM HOLE AT 350' FNL & 1560' FEL, SEC. 27
 POWERS 2C-27HZ TO BE AT 310' FNL, 1330' FEL.
 BOTTOM HOLE AT 350' FNL & 1965' FEL, SEC. 27
 POWERS 2N-27HZ TO BE AT 310' FNL, 1360' FEL.
 BOTTOM HOLE AT 350' FNL & 2351' FEL, SEC. 27

LEGEND

- ◉ = EXISTING MONUMENT
- = PROPOSED WELL
- ◆ = BOTTOM HOLE
- ▲ = HEEL LOCATION
- BH = BOTTOM HOLE
- = CALCULATED POSITION
- ◇ = EXISTING WELL

PREPARED BY:



KERR-MCGEE OIL & GAS ONSHORE LP

FIELD DATE:

10-14-14

DRAWING DATE:

04-03-15

SURFACE LOCATION:

NW 1/4, NE 1/4, SEC. 22, T2N, R65W, 6TH P.M.
 NE 1/4, NE 1/4, SEC. 22, T2N, R65W, 6TH P.M.
 WELD COUNTY, COLORADO

