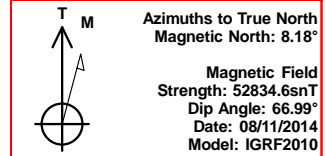
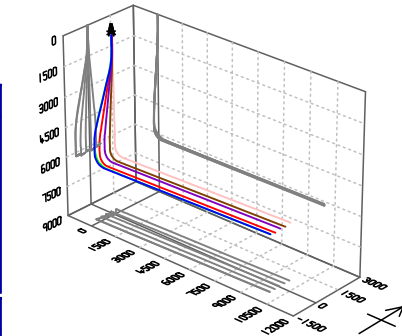




Bill Barrett Corp.
Project: Weld Co., CO
Site: Sec.26-T5N-R62W
Well: Anschutz State 5-62-26-3225BH2
Wellbore: Wellbore #1
Design: Design #3
Lat: 40° 22' 26.090 N
Long: 104° 17' 56.411 W
Pad GL: 4640.00
KB: WELL @ 4656.00usft (Original Well Elev)

Archer



Azimuths to True North
Magnetic North: 8.18°
Magnetic Field
Strength: 52834.6nT
Dip Angle: 66.99°
Date: 08/11/2014
Model: IGRF2010

SECTION DETAILS

MD	Inc	Azi	TVD	+N/-S	+E/-W	Dleg	TFace	VSec	Annotation
695.00	0.23	336.57	694.98	-1.96	-1.39	0.00	0.00	-1.44	Start 205.02 hold at 695.00 MD
900.02	0.23	336.57	900.00	-1.20	-1.72	0.00	0.00	-1.75	Start DLS 2.00 TFO -138.60
1677.95	15.39	198.53	1668.71	-98.22	-35.33	2.00	-138.60	-38.11	Start 2805.78 hold at 1677.95 MD
4483.73	15.39	198.53	4373.93	-804.12	-271.87	0.00	0.00	-294.63	Start Drop -2.00
5253.07	0.00	0.00	5134.05	-901.48	-304.49	2.00	180.00	-330.01	Start 500.00 hold at 5253.07 MD
5753.07	0.00	0.00	5634.05	-901.48	-304.49	0.00	0.00	-330.01	Start Build 10.00
6656.04	90.30	88.37	6207.00	-885.12	271.21	10.00	88.37	245.92	Start 9645.72 hold at 6656.04 MD
16301.76	90.30	88.37	6157.00	-611.10	9912.90	0.00	0.00	9891.51	TD at 16301.76

WELL DETAILS: Anschutz State 5-62-26-3225BH2

+N/-S	+E/-W	Northing	Ground Level:	4640.00	Latitude	Longitude	Slot
0.00	0.00	1381323.325	Easting	3334608.580	40° 22' 26.090 N	104° 17' 56.411 W	

PROJECT DETAILS: Weld Co., CO

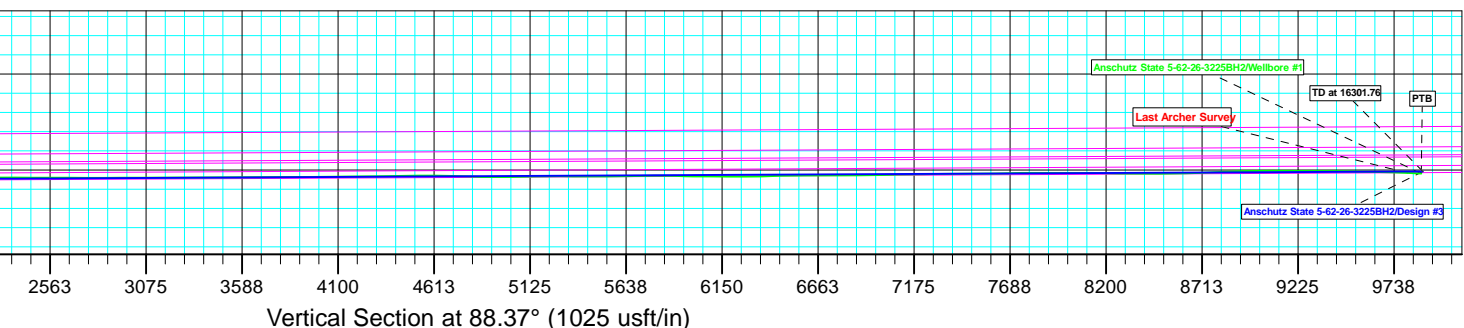
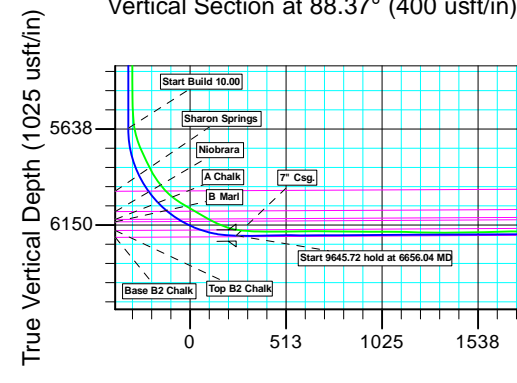
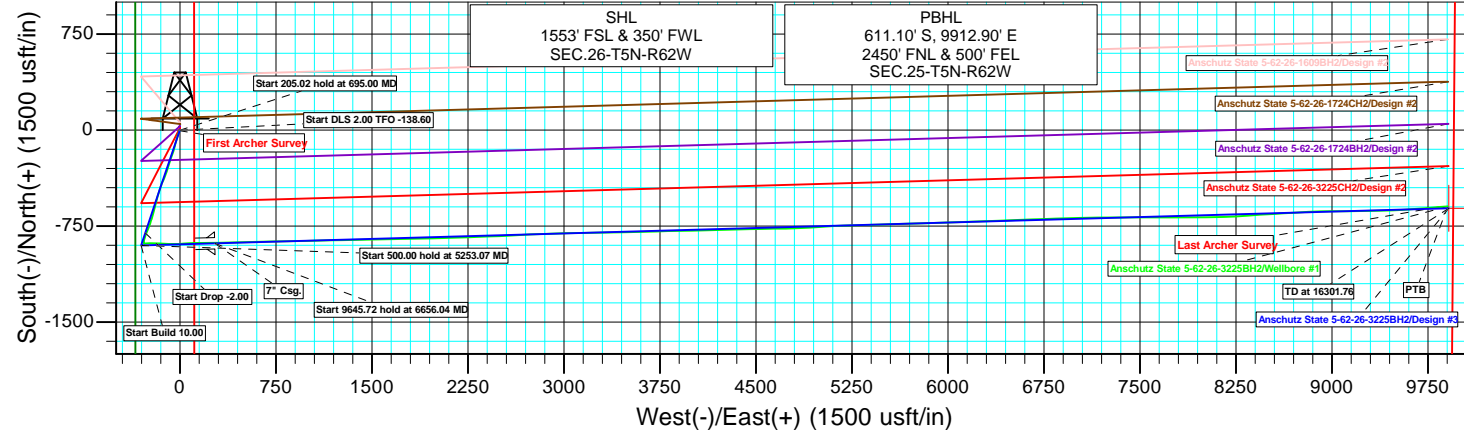
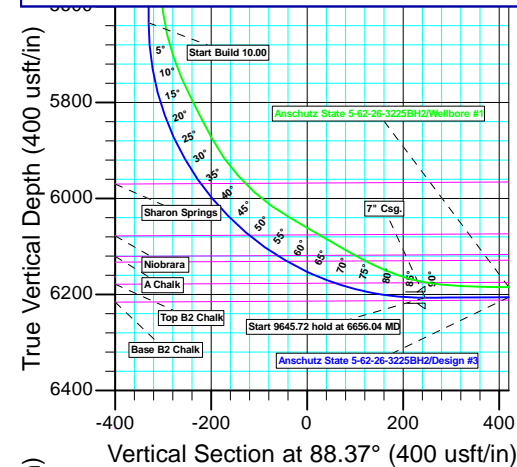
Geodetic System: US State Plane 1983
Datum: North American Datum 1983
Ellipsoid: GRS 1980
Zone: Colorado Northern Zone
System Datum: Mean Sea Level

CASING DETAILS

TVD	MD	Name
6207.00	6656.04	7" Csg.

WELLBORE TARGET DETAILS (LAT/LONG)

Name	TVD	+N/-S	+E/-W	Latitude	Longitude	Shape Point
Anschutz State 5-62-26-3225BH2 tgt	6157.00	-611.10	9912.90	40° 22' 20.032 N	104° 15' 48.330 W	



Plan: Design #3 (Anschutz State 5-62-26-3225BH2/Wellbore #1)

Created By: Ricky Osburn Date: 7:56, March 30 2015



Bill Barrett Corporation

Bill Barrett Corp.

Weld Co., CO

Sec.26-T5N-R62W

Anschutz State 5-62-26-3225BH2

Wellbore #1

Survey: Survey #2

Standard Survey Report

30 March, 2015

Archer

Company:	Bill Barrett Corp.	Local Co-ordinate Reference:	Well Anschutz State 5-62-26-3225BH2
Project:	Weld Co., CO	TVD Reference:	WELL @ 4656.00usft (Original Well Elev)
Site:	Sec.26-T5N-R62W	MD Reference:	WELL @ 4656.00usft (Original Well Elev)
Well:	Anschutz State 5-62-26-3225BH2	North Reference:	True
Wellbore:	Wellbore #1	Survey Calculation Method:	Minimum Curvature
Design:	Wellbore #1	Database:	EDMDBBW

Project	Weld Co., CO		
Map System:	US State Plane 1983	System Datum:	Mean Sea Level
Geo Datum:	North American Datum 1983		
Map Zone:	Colorado Northern Zone		

Site		Sec.26-T5N-R62W			
Site Position:		Northing:	1,382,286.736 usft	Latitude:	40° 22' 35.580 N
From:	Lat/Long	Easting:	3,334,831.533 usft	Longitude:	104° 17' 53.362 W
Position Uncertainty:	0.00 usft	Slot Radius:	13-3/16"	Grid Convergence:	0.78 °

Well	Anschutz State 5-62-26-3225BH2					
Well Position	+N/-S	0.00 usft	Northing:	1,381,323.325 usft	Latitude:	40° 22' 26.090 N
	+E/-W	0.00 usft	Easting:	3,334,608.580 usft	Longitude:	104° 17' 56.411 W
Position Uncertainty		0.00 usft	Wellhead Elevation:	usft	Ground Level:	4,640.00 usft

Wellbore	Wellbore #1				
Magnetics	Model Name	Sample Date	Declination (°)	Dip Angle (°)	Field Strength (nT)
	IGRF2010	2014/08/11	8.18	66.99	52,835

Design	Wellbore #1			
Audit Notes:				
Version:	1.0	Phase:	ACTUAL	Tie On Depth: 0.00
Vertical Section:	Depth From (TVD) (usft)	+N/-S (usft)	+E/-W (usft)	Direction (°)
	0.00	0.00	0.00	88.37

Survey Program	Date	2015/03/30			
From (usft)	To (usft)	Survey (Wellbore)	Tool Name	Description	
100.00	695.00	Survey #1 (Wellbore #1)	NS-GYRO-MS	North sensing gyrocompassing m/s	
923.00	16,200.00	Survey #2 (Wellbore #1)	MWD	MWD - Standard	

Survey										
Measured Depth (usft)	Inclination (°)	Azimuth (°)	Vertical Depth (usft)	+N/-S (usft)	+E/-W (usft)	Vertical Section (usft)	Dogleg Rate (°/100usft)	Build Rate (°/100usft)	Turn Rate (°/100usft)	
695.00	0.23	336.57	694.98	-1.96	-1.39	-1.44	0.00	0.00	0.00	
First Archer Survey										
923.00	1.60	204.60	922.95	-4.43	-2.90	-3.02	0.77	0.60	-57.88	
1,018.00	4.70	206.30	1,017.80	-9.13	-5.17	-5.43	3.26	3.26	1.79	
1,110.00	6.60	202.90	1,109.35	-17.38	-8.90	-9.39	2.10	2.07	-3.70	
1,201.00	8.60	198.90	1,199.54	-28.63	-13.14	-13.95	2.27	2.20	-4.40	
1,293.00	8.70	201.40	1,290.50	-41.62	-17.91	-19.08	0.42	0.11	2.72	
1,385.00	9.90	195.30	1,381.29	-55.73	-22.53	-24.11	1.69	1.30	-6.63	
1,477.00	11.40	194.30	1,471.70	-72.17	-26.87	-28.91	1.64	1.63	-1.09	
1,568.00	12.70	194.30	1,560.69	-90.58	-31.56	-34.12	1.43	1.43	0.00	
1,660.00	14.50	194.30	1,650.11	-111.54	-36.90	-40.06	1.96	1.96	0.00	
1,752.00	14.30	195.00	1,739.22	-133.67	-42.69	-46.47	0.29	-0.22	0.76	

Company:	Bill Barrett Corp.	Local Co-ordinate Reference:	Well Anschutz State 5-62-26-3225BH2
Project:	Weld Co., CO	TVD Reference:	WELL @ 4656.00usft (Original Well Elev)
Site:	Sec.26-T5N-R62W	MD Reference:	WELL @ 4656.00usft (Original Well Elev)
Well:	Anschutz State 5-62-26-3225BH2	North Reference:	True
Wellbore:	Wellbore #1	Survey Calculation Method:	Minimum Curvature
Design:	Wellbore #1	Database:	EDMDBBW

Survey										
Measured Depth (usft)	Inclination (°)	Azimuth (°)	Vertical Depth (usft)	+N/-S (usft)	+E/-W (usft)	Vertical Section (usft)	Dogleg Rate (°/100usft)	Build Rate (°/100usft)	Turn Rate (°/100usft)	
1,843.00	15.10	194.70	1,827.24	-155.99	-48.60	-53.02	0.88	0.88	-0.33	
1,935.00	15.40	199.00	1,916.00	-179.14	-55.62	-60.69	1.27	0.33	4.67	
2,026.00	14.90	198.30	2,003.84	-201.67	-63.23	-68.94	0.59	-0.55	-0.77	
2,117.00	16.00	201.50	2,091.55	-224.45	-71.50	-77.86	1.53	1.21	3.52	
2,209.00	15.00	201.20	2,180.21	-247.34	-80.45	-87.46	1.09	-1.09	-0.33	
2,301.00	15.70	197.70	2,268.93	-270.30	-88.54	-96.20	1.26	0.76	-3.80	
2,393.00	15.60	196.40	2,357.52	-294.03	-95.82	-104.14	0.40	-0.11	-1.41	
2,485.00	14.80	195.70	2,446.30	-317.21	-102.49	-111.47	0.89	-0.87	-0.76	
2,577.00	15.20	196.50	2,535.16	-340.08	-109.10	-118.73	0.49	0.43	0.87	
2,669.00	16.40	203.80	2,623.69	-363.54	-117.76	-128.06	2.52	1.30	7.93	
2,760.00	16.40	204.40	2,710.99	-386.99	-128.26	-139.21	0.19	0.00	0.66	
2,852.00	15.40	203.90	2,799.47	-409.99	-138.57	-150.18	1.10	-1.09	-0.54	
2,943.00	14.00	201.00	2,887.49	-431.31	-147.41	-159.62	1.74	-1.54	-3.19	
3,035.00	13.90	196.80	2,976.78	-452.28	-154.59	-167.40	1.11	-0.11	-4.57	
3,126.00	16.00	198.00	3,064.69	-474.67	-161.63	-175.07	2.33	2.31	1.32	
3,218.00	15.30	196.00	3,153.28	-498.40	-168.89	-183.00	0.96	-0.76	-2.17	
3,310.00	14.40	194.20	3,242.21	-521.16	-175.05	-189.80	1.10	-0.98	-1.96	
3,405.00	16.10	194.20	3,333.86	-545.38	-181.17	-196.61	1.79	1.79	0.00	
3,500.00	17.60	194.90	3,424.78	-572.03	-188.10	-204.29	1.59	1.58	0.74	
3,595.00	18.60	195.00	3,515.08	-600.55	-195.71	-212.72	1.05	1.05	0.11	
3,690.00	19.50	194.80	3,604.87	-630.51	-203.69	-221.54	0.95	0.95	-0.21	
3,784.00	17.70	196.10	3,693.96	-659.41	-211.66	-230.33	1.96	-1.91	1.38	
3,879.00	16.60	197.30	3,784.74	-686.24	-219.70	-239.13	1.22	-1.16	1.26	
3,973.00	14.40	198.60	3,875.31	-710.15	-227.42	-247.53	2.37	-2.34	1.38	
4,068.00	12.80	198.70	3,967.65	-731.31	-234.56	-255.27	1.68	-1.68	0.11	
4,163.00	11.80	199.40	4,060.46	-750.44	-241.16	-262.41	1.06	-1.05	0.74	
4,257.00	11.00	200.70	4,152.61	-767.90	-247.52	-269.27	0.89	-0.85	1.38	
4,351.00	10.70	201.80	4,244.93	-784.39	-253.94	-276.14	0.39	-0.32	1.17	
4,446.00	10.20	203.00	4,338.35	-800.32	-260.50	-283.16	0.57	-0.53	1.26	
4,541.00	9.70	204.20	4,431.92	-815.36	-267.06	-290.15	0.57	-0.53	1.26	
4,636.00	9.30	197.60	4,525.62	-829.98	-272.67	-296.17	1.22	-0.42	-6.95	
4,731.00	7.80	195.30	4,619.56	-843.51	-276.69	-300.57	1.62	-1.58	-2.42	
4,826.00	6.50	194.40	4,713.82	-854.94	-279.73	-303.93	1.37	-1.37	-0.95	
4,921.00	5.90	189.80	4,808.27	-864.96	-281.90	-306.39	0.82	-0.63	-4.84	
5,016.00	4.40	187.70	4,902.88	-873.38	-283.22	-307.94	1.59	-1.58	-2.21	
5,110.00	3.70	179.70	4,996.65	-879.99	-283.68	-308.60	0.96	-0.74	-8.51	
5,205.00	2.20	177.00	5,091.52	-884.88	-283.57	-308.63	1.59	-1.58	-2.84	
5,299.00	0.70	190.70	5,185.49	-887.24	-283.58	-308.71	1.63	-1.60	14.57	
5,394.00	0.20	143.20	5,280.48	-887.95	-283.59	-308.73	0.61	-0.53	-50.00	
5,489.00	0.50	62.90	5,375.48	-887.89	-283.12	-308.26	0.53	0.32	-84.53	
5,584.00	1.10	98.40	5,470.47	-887.83	-281.85	-306.99	0.79	0.63	37.37	
5,631.00	1.10	93.90	5,517.46	-887.93	-280.96	-306.10	0.18	0.00	-9.57	
5,679.00	2.50	79.50	5,565.44	-887.77	-279.47	-304.61	3.04	2.92	-30.00	
5,726.00	8.30	81.10	5,612.21	-887.06	-275.10	-300.22	12.34	12.34	3.40	
5,774.00	13.20	86.70	5,659.36	-886.21	-266.20	-291.30	10.43	10.21	11.67	
5,821.00	18.60	86.00	5,704.54	-885.38	-253.36	-278.44	11.50	11.49	-1.49	
5,868.00	23.40	85.00	5,748.41	-884.04	-236.57	-261.63	10.24	10.21	-2.13	
5,915.00	26.90	90.40	5,790.95	-883.30	-216.64	-241.67	8.90	7.45	11.49	
5,963.00	26.20	90.80	5,833.89	-883.52	-195.18	-220.24	1.51	-1.46	0.83	
6,010.00	30.00	96.30	5,875.35	-884.96	-173.12	-198.22	9.78	8.09	11.70	
6,058.00	34.50	94.80	5,915.93	-887.41	-147.63	-172.81	9.52	9.37	-3.12	
6,105.00	42.40	93.10	5,952.71	-889.39	-118.50	-143.75	16.96	16.81	-3.62	
6,153.00	47.00	90.40	5,986.82	-890.39	-84.76	-110.06	10.37	9.58	-5.62	
6,200.00	56.00	88.70	6,016.05	-890.06	-48.02	-73.32	19.36	19.15	-3.62	

Company:	Bill Barrett Corp.	Local Co-ordinate Reference:	Well Anschutz State 5-62-26-3225BH2
Project:	Weld Co., CO	TVD Reference:	WELL @ 4656.00usft (Original Well Elev)
Site:	Sec.26-T5N-R62W	MD Reference:	WELL @ 4656.00usft (Original Well Elev)
Well:	Anschutz State 5-62-26-3225BH2	North Reference:	True
Wellbore:	Wellbore #1	Survey Calculation Method:	Minimum Curvature
Design:	Wellbore #1	Database:	EDMDBBW

Survey										
Measured Depth (usft)	Inclination (°)	Azimuth (°)	Vertical Depth (usft)	+N/-S (usft)	+E/-W (usft)	Vertical Section (usft)	Dogleg Rate (°/100usft)	Build Rate (°/100usft)	Turn Rate (°/100usft)	
6,247.00	59.10	87.50	6,041.27	-888.74	-8.39	-33.67	6.94	6.60	-2.55	
6,294.00	59.60	86.50	6,065.23	-886.62	31.99	6.75	2.12	1.06	-2.13	
6,341.00	60.10	86.70	6,088.84	-884.21	72.56	47.38	1.13	1.06	0.43	
6,388.00	60.40	87.70	6,112.16	-882.22	113.31	88.17	1.95	0.64	2.13	
6,437.00	63.30	89.70	6,135.28	-881.25	156.50	131.37	6.93	5.92	4.08	
6,484.00	68.90	89.30	6,154.31	-880.87	199.45	174.31	11.94	11.91	-0.85	
6,531.00	74.60	89.50	6,169.02	-880.41	244.06	218.92	12.13	12.13	0.43	
6,578.00	83.70	89.80	6,177.86	-880.13	290.18	265.02	19.37	19.36	0.64	
6,625.00	86.30	89.70	6,181.96	-879.92	336.99	311.83	5.54	5.53	-0.21	
6,672.00	88.20	88.80	6,184.21	-879.31	383.93	358.76	4.47	4.04	-1.91	
6,709.00	89.70	88.50	6,184.89	-878.44	420.91	395.76	4.13	4.05	-0.81	
6,799.00	90.20	87.80	6,184.97	-875.53	510.87	485.75	0.96	0.56	-0.78	
6,894.00	91.10	88.90	6,183.89	-872.80	605.82	580.75	1.50	0.95	1.16	
6,988.00	89.40	88.90	6,183.48	-870.99	699.80	674.74	1.81	-1.81	0.00	
7,083.00	89.40	89.00	6,184.48	-869.25	794.78	769.73	0.11	0.00	0.11	
7,177.00	89.60	88.90	6,185.30	-867.53	888.76	863.72	0.24	0.21	-0.11	
7,272.00	89.50	88.90	6,186.04	-865.70	983.74	958.71	0.11	-0.11	0.00	
7,367.00	89.80	88.50	6,186.62	-863.55	1,078.71	1,053.71	0.53	0.32	-0.42	
7,462.00	89.20	88.70	6,187.45	-861.23	1,173.68	1,148.70	0.67	-0.63	0.21	
7,557.00	88.80	88.80	6,189.11	-859.16	1,268.64	1,243.69	0.43	-0.42	0.11	
7,652.00	88.40	89.00	6,191.43	-857.33	1,363.59	1,338.65	0.47	-0.42	0.21	
7,746.00	91.50	88.70	6,191.51	-855.45	1,457.56	1,432.64	3.31	3.30	-0.32	
7,839.00	91.90	89.00	6,188.75	-853.58	1,550.50	1,525.59	0.54	0.43	0.32	
7,933.00	91.80	89.10	6,185.72	-852.02	1,644.44	1,619.54	0.15	-0.11	0.11	
8,027.00	89.60	89.60	6,184.57	-850.96	1,738.42	1,713.51	2.40	-2.34	0.53	
8,122.00	89.80	89.60	6,185.07	-850.29	1,833.42	1,808.49	0.21	0.21	0.00	
8,217.00	89.80	87.70	6,185.40	-848.06	1,928.39	1,903.48	2.00	0.00	-2.00	
8,311.00	89.90	88.20	6,185.65	-844.69	2,022.33	1,997.48	0.54	0.11	0.53	
8,406.00	88.60	87.80	6,186.89	-841.38	2,117.26	2,092.47	1.43	-1.37	-0.42	
8,500.00	88.70	88.00	6,189.10	-837.93	2,211.17	2,186.44	0.24	0.11	0.21	
8,595.00	89.60	88.20	6,190.51	-834.79	2,306.10	2,281.43	0.97	0.95	0.21	
8,690.00	90.30	88.10	6,190.60	-831.72	2,401.05	2,376.42	0.74	0.74	-0.11	
8,785.00	89.50	87.40	6,190.76	-827.99	2,495.98	2,471.42	1.12	-0.84	-0.74	
8,881.00	90.10	87.60	6,191.10	-823.80	2,591.89	2,567.41	0.66	0.62	0.21	
8,976.00	89.30	87.30	6,191.59	-819.57	2,686.79	2,662.39	0.90	-0.84	-0.32	
9,070.00	89.80	87.20	6,192.33	-815.07	2,780.68	2,756.37	0.54	0.53	-0.11	
9,164.00	90.50	87.50	6,192.09	-810.72	2,874.58	2,850.35	0.81	0.74	0.32	
9,259.00	90.10	88.10	6,191.59	-807.07	2,969.51	2,945.35	0.76	-0.42	0.63	
9,354.00	90.90	87.90	6,190.76	-803.76	3,064.44	3,040.34	0.87	0.84	-0.21	
9,449.00	90.00	89.30	6,190.01	-801.44	3,159.41	3,135.33	1.75	-0.95	1.47	
9,543.00	89.80	89.50	6,190.18	-800.45	3,253.40	3,229.32	0.30	-0.21	0.21	
9,638.00	90.00	89.70	6,190.34	-799.79	3,348.40	3,324.30	0.30	0.21	0.21	
9,733.00	90.50	89.40	6,189.93	-799.04	3,443.40	3,419.27	0.61	0.53	-0.32	
9,828.00	90.30	88.80	6,189.27	-797.55	3,538.38	3,514.26	0.67	-0.21	-0.63	
9,920.00	90.70	88.60	6,188.46	-795.46	3,630.35	3,606.26	0.49	0.43	-0.22	
10,012.00	89.80	87.90	6,188.06	-792.65	3,722.31	3,698.26	1.24	-0.98	-0.76	
10,103.00	90.70	88.40	6,187.66	-789.72	3,813.26	3,789.25	1.13	0.99	0.55	
10,195.00	90.60	89.00	6,186.62	-787.63	3,905.23	3,881.25	0.66	-0.11	0.65	
10,287.00	89.80	88.60	6,186.30	-785.70	3,997.21	3,973.24	0.97	-0.87	-0.43	
10,379.00	90.40	88.70	6,186.14	-783.53	4,089.18	4,065.24	0.66	0.65	0.11	
10,471.00	90.20	88.60	6,185.66	-781.37	4,181.16	4,157.24	0.24	-0.22	-0.11	
10,563.00	90.90	88.30	6,184.77	-778.88	4,273.12	4,249.23	0.83	0.76	-0.33	
10,655.00	91.30	88.70	6,183.01	-776.47	4,365.07	4,341.21	0.61	0.43	0.43	
10,748.00	90.60	88.60	6,181.47	-774.28	4,458.03	4,434.20	0.76	-0.75	-0.11	

Company:	Bill Barrett Corp.	Local Co-ordinate Reference:	Well Anschutz State 5-62-26-3225BH2
Project:	Weld Co., CO	TVD Reference:	WELL @ 4656.00usft (Original Well Elev)
Site:	Sec.26-T5N-R62W	MD Reference:	WELL @ 4656.00usft (Original Well Elev)
Well:	Anschutz State 5-62-26-3225BH2	North Reference:	True
Wellbore:	Wellbore #1	Survey Calculation Method:	Minimum Curvature
Design:	Wellbore #1	Database:	EDMDBBW

Survey									
Measured Depth (usft)	Inclination (°)	Azimuth (°)	Vertical Depth (usft)	+N/-S (usft)	+E/-W (usft)	Vertical Section (usft)	Dogleg Rate (°/100usft)	Build Rate (°/100usft)	Turn Rate (°/100usft)
10,840.00	90.70	88.90	6,180.42	-772.27	4,550.00	4,526.19	0.34	0.11	0.33
10,932.00	89.50	88.80	6,180.26	-770.43	4,641.98	4,618.19	1.31	-1.30	-0.11
11,024.00	88.60	89.60	6,181.79	-769.14	4,733.96	4,710.16	1.31	-0.98	0.87
11,116.00	88.20	87.60	6,184.36	-766.90	4,825.89	4,802.12	2.22	-0.43	-2.17
11,208.00	87.90	86.90	6,187.49	-762.48	4,917.73	4,894.05	0.83	-0.33	-0.76
11,300.00	91.60	85.70	6,187.89	-756.55	5,009.52	4,985.97	4.23	4.02	-1.30
11,393.00	91.90	86.80	6,185.05	-750.47	5,102.27	5,078.86	1.23	0.32	1.18
11,485.00	90.10	88.20	6,183.44	-746.46	5,194.17	5,170.83	2.48	-1.96	1.52
11,577.00	89.60	88.20	6,183.68	-743.57	5,286.12	5,262.83	0.54	-0.54	0.00
11,669.00	89.90	88.20	6,184.08	-740.68	5,378.07	5,354.83	0.33	0.33	0.00
11,761.00	90.20	88.30	6,184.00	-737.87	5,470.03	5,446.83	0.34	0.33	0.11
11,853.00	90.30	88.20	6,183.60	-735.06	5,561.99	5,538.83	0.15	0.11	-0.11
11,945.00	90.70	88.20	6,182.80	-732.17	5,653.94	5,630.82	0.43	0.43	0.00
12,037.00	91.50	88.60	6,181.03	-729.60	5,745.89	5,722.81	0.97	0.87	0.43
12,128.00	89.50	88.80	6,180.24	-727.54	5,836.85	5,813.80	2.21	-2.20	0.22
12,219.00	88.30	88.20	6,181.99	-725.15	5,927.80	5,904.78	1.47	-1.32	-0.66
12,311.00	89.40	87.90	6,183.83	-722.03	6,019.73	5,996.76	1.24	1.20	-0.33
12,403.00	89.90	87.70	6,184.40	-718.49	6,111.66	6,088.75	0.59	0.54	-0.22
12,494.00	89.80	88.00	6,184.63	-715.08	6,202.60	6,179.75	0.35	-0.11	0.33
12,586.00	89.80	87.60	6,184.95	-711.55	6,294.53	6,271.74	0.43	0.00	-0.43
12,678.00	91.50	87.50	6,183.91	-707.62	6,386.43	6,363.72	1.85	1.85	-0.11
12,769.00	91.60	88.00	6,181.45	-704.04	6,477.33	6,454.68	0.56	0.11	0.55
12,861.00	90.40	88.20	6,179.84	-700.99	6,569.26	6,546.67	1.32	-1.30	0.22
12,953.00	90.10	88.30	6,179.44	-698.18	6,661.22	6,638.66	0.34	-0.33	0.11
13,045.00	90.50	88.20	6,178.96	-695.38	6,753.18	6,730.66	0.45	0.43	-0.11
13,137.00	90.40	88.00	6,178.24	-692.33	6,845.12	6,822.66	0.24	-0.11	-0.22
13,228.00	89.80	87.70	6,178.08	-688.91	6,936.06	6,913.65	0.74	-0.66	-0.33
13,320.00	91.70	89.20	6,176.88	-686.42	7,028.01	7,005.64	2.63	2.07	1.63
13,411.00	91.70	88.40	6,174.18	-684.52	7,118.95	7,096.60	0.88	0.00	-0.88
13,503.00	90.50	89.50	6,172.41	-682.83	7,210.91	7,188.57	1.77	-1.30	1.20
13,594.00	90.40	90.00	6,171.69	-682.44	7,301.91	7,279.54	0.56	-0.11	0.55
13,686.00	90.50	90.00	6,170.97	-682.44	7,393.91	7,371.50	0.11	0.11	0.00
13,781.00	90.70	90.30	6,169.98	-682.68	7,488.90	7,466.45	0.38	0.21	0.32
13,876.00	90.90	90.30	6,168.65	-683.18	7,583.89	7,561.39	0.21	0.21	0.00
13,970.00	90.80	89.90	6,167.26	-683.35	7,677.88	7,655.33	0.44	-0.11	-0.43
14,065.00	91.00	89.70	6,165.76	-683.01	7,772.87	7,750.29	0.30	0.21	-0.21
14,160.00	89.80	89.70	6,165.10	-682.52	7,867.86	7,845.26	1.26	-1.26	0.00
14,255.00	90.00	89.20	6,165.27	-681.60	7,962.86	7,940.25	0.57	0.21	-0.53
14,350.00	90.00	89.10	6,165.27	-680.20	8,057.85	8,035.24	0.11	0.00	-0.11
14,445.00	89.50	88.80	6,165.68	-678.45	8,152.83	8,130.23	0.61	-0.53	-0.32
14,540.00	88.60	87.10	6,167.26	-675.06	8,247.75	8,225.21	2.02	-0.95	-1.79
14,634.00	89.20	86.10	6,169.06	-669.48	8,341.57	8,319.15	1.24	0.64	-1.06
14,728.00	89.60	85.20	6,170.05	-662.35	8,435.29	8,413.03	1.05	0.43	-0.96
14,823.00	91.00	86.70	6,169.55	-655.64	8,530.05	8,507.94	2.16	1.47	1.58
14,918.00	90.90	86.60	6,167.97	-650.09	8,624.87	8,602.89	0.15	-0.11	-0.11
15,011.00	92.20	86.80	6,165.46	-644.74	8,717.68	8,695.81	1.41	1.40	0.22
15,106.00	92.80	86.80	6,161.31	-639.45	8,812.44	8,790.69	0.63	0.63	0.00
15,200.00	92.10	87.70	6,157.30	-634.94	8,906.25	8,884.58	1.21	-0.74	0.96
15,295.00	91.10	89.80	6,154.64	-632.87	9,001.18	8,979.53	2.45	-1.05	2.21
15,390.00	89.30	90.20	6,154.31	-632.87	9,096.17	9,074.49	1.94	-1.89	0.42
15,485.00	89.80	90.10	6,155.06	-633.12	9,191.17	9,169.44	0.54	0.53	-0.11
15,579.00	89.90	89.10	6,155.30	-632.46	9,285.17	9,263.42	1.07	0.11	-1.06
15,674.00	89.70	88.60	6,155.63	-630.55	9,380.15	9,358.42	0.57	-0.21	-0.53
15,769.00	89.30	87.40	6,156.46	-627.24	9,475.08	9,453.41	1.33	-0.42	-1.26

Company:	Bill Barrett Corp.	Local Co-ordinate Reference:	Well Anschutz State 5-62-26-3225BH2
Project:	Weld Co., CO	TVD Reference:	WELL @ 4656.00usft (Original Well Elev)
Site:	Sec.26-T5N-R62W	MD Reference:	WELL @ 4656.00usft (Original Well Elev)
Well:	Anschutz State 5-62-26-3225BH2	North Reference:	True
Wellbore:	Wellbore #1	Survey Calculation Method:	Minimum Curvature
Design:	Wellbore #1	Database:	EDMDBBW

Survey										
Measured Depth (usft)	Inclination (°)	Azimuth (°)	Vertical Depth (usft)	+N/-S (usft)	+E/-W (usft)	Vertical Section (usft)	Dogleg Rate (°/100usft)	Build Rate (°/100usft)	Turn Rate (°/100usft)	
15,863.00	88.60	86.30	6,158.19	-622.07	9,568.92	9,547.36	1.39	-0.74	-1.17	
15,957.00	88.70	86.10	6,160.40	-615.85	9,662.69	9,641.26	0.24	0.11	-0.21	
16,053.00	88.30	85.30	6,162.91	-608.65	9,758.39	9,737.13	0.93	-0.42	-0.83	
Last Archer Survey										
16,127.00	87.50	85.00	6,165.63	-602.40	9,832.07	9,810.96	1.15	-1.08	-0.41	
PTB - Anschutz State 5-62-26-3225BH2 tgt										
16,200.00	87.50	85.00	6,168.81	-596.04	9,904.72	9,883.76	0.00	0.00	0.00	

Survey Annotations					
Measured Depth (usft)	Vertical Depth (usft)	Local Coordinates			
		+N/-S (usft)	+E/-W (usft)	Comment	
923.00	922.95	-4.43	-2.90	First Archer Survey	
16,127.00	6,165.63	-602.40	9,832.07	Last Archer Survey	
16,200.00	6,168.81	-596.04	9,904.72	PTB	

Checked By: _____ Approved By: _____ Date: _____