



Scale: 5" / 100'  
Measured Depth Log

Well Name MATRIX K-29-HN

Location SEC. 29-T6N-R65W

State COLORADO

County WELD

Country USA

Rig Number FRONTIER 8

API Number 0512340702

Field GREELEY

Region CJ BASIN

Drilling Completed 3/11/2015

Spud Date 12/30/2014

Surface Coordinates 5111FSL  
2199FWL

Bottom Hole Coordinates 4701FFNLL  
2458FFELL

Ground Elevation 4708'

K.B. Elevation 4730.5

Logged Interval 6000' MD To 11476'

Total Depth 11476'

Formation NIOBRARA B CHALK

Type of Drilling Fluid FWLSND

Operator

Company Bayswater Exploration and Production LLC.

Address 730 17th Street, Suite 610  
Denver, CO 80202

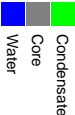
Geologist

Name ROBERT DAVIS, LISA KANT, ANDREW MARTENS

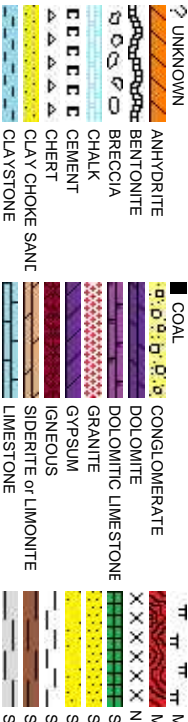
Company COLUMBINE LOGGING, INC.

Address 602 S. LIPAN ST.  
DENVER, CO 80223

Zone Color Coding



Rock Types



Accessories

<b>Fossils</b>	GASTROPOD	ARGILLITE GRAIN	HEAVY MINERAL
INOCERAMUS	B BENTONITE	K KAOLIN	
ALGAE	O OOLITE	BIT BITUMENOUS SUBSTANCE	AN ANHYDRITE STRINGER
AMPHIPORA	O OSTRACOD	BRE BRECCIA FRAGMENTS	BEN BENTONITE STRINGER
BELEMNITE	P PELLET	C CALCAREOUS	CO COAL STRINGER
BIOCLASTIC	P PISOLITE	CAR CARBONACEOUS FLAKES	DO DOLOMITE STRINGER
BRACHIOPOD	PL PLANT REMAINS	CH CHTDK	GY GYPSUM STRINGER
BRACHYOZA	SP PLANT SPORES	CO COAL - THIN BEDS	LS LIMESTONE STRINGER
CEPHALOPOD	SC SCAPHOPOD	DO DOLOMITIC	MAR MARLSTONE (CAL.) STRG
CORAL	ST STROMATOPOROID	FE FELDSPAR	MAR MARLSTONE (DOL.) STRG
CRINOID		SI SANDY	SAND SANDSTONE STRINGER
ECHINOID		FE FERRUGINOUS PELLET	SH SHALE STRINGER
<b>Minerals</b>	F FISH	FE FERRUGINOUS	SI SILTSTONE STRINGER
FOR FORAMINIFERA	AN ANHYDRITIC	GL GLAUCONITE	
F FOSSIL	AR ARGILLACEOUS	GY GYPSIFEROUS	SI SILTY
		TU TUFFACEOUS	

Stringer



Other Symbols

<b>Oil Show</b>	P PINPOINT	WT WIRELINE TESTED - LEFT	E EARTHY
	V VUGGY	WR WIRELINE TESTED - RT	FX FINELYXLN
<b>Engineering</b>	D DEAD	FT FORMATION TOP	DST DRILL STEM TEST
	E EVEN	GS GAS SHOW	MD MN DEPTH
	Q QUESTIONABLE	OS OIL SHOW	L LITHOGRAPHIC
	S SPOTTED STAINING	CU CONNECTION (UP)	MX MICROXLN
		CD CONNECTION (DOWN)	MS MUDSTONE
<b>Porosity</b>	CG CONNECTION GAS	NF NORMAL FAULT	AN ANGULAR
	E EARTHY	OS OVERTURNED STRATA	SA SUBANG
	F FENESTRAL	RF REVERSE FAULT	SR SUBRND
	FR FRACTURE	CAS CASING	
	IC INTERCRYSTALLINE	SC SIDEWALL CORE (LEFT)	<b>Textures</b>
	IO INTEROOLITIC	SC SIDEWALL CORE (RIGHT)	P POOR
	M MOLDIC	SL SLIDE	W WELL
	O ORGANIC	CL CORE - LOST	BS BOUNDSTONE
		CR CORE - RECOVERED	CH CHALKY
		S SURVEY	CX CRYPTOXLN

Sorting

Textures

MARLSTONE		SHALY SANDSTONE
METAMORPHIC		SHALY SILTSTONE
NO SAMPLE		SILTY SHALE
SALT		SILTSTONE
SANDSTONE		TILL
SALT-PEPPER SAND		TUFF
SHALE		WELDED TUFF
SHALE COLORED		
SHALE GRAY		

P POOR

W WELL

M MODERATE

WS WACKESTONE

PS PACKSTONE

MS MUDSTONE

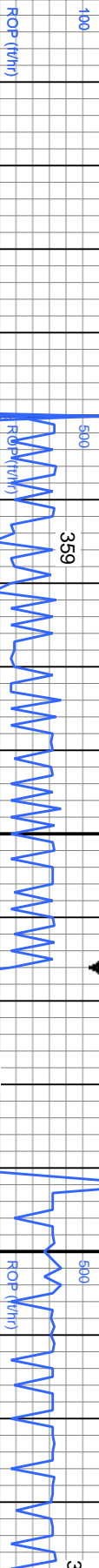
L LITHOGRAPHIC

MX MICROXLN

ES GRAINSTONE

FX FINELYXLN

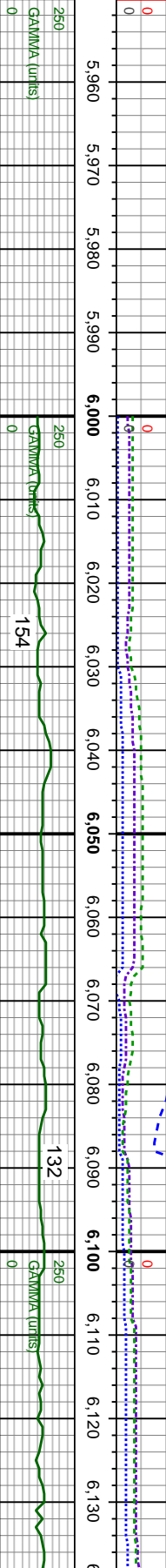
ROP



Total Gas & Chromatograph

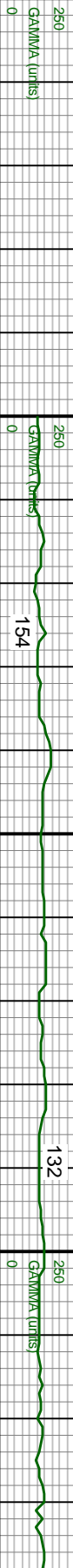
GAS  
C1  
C2  
C3  
C4

COLUMBINE LOGGING RIGGED  
UP ON 1/14/2015 MANNED  
2-PERSON LOGGING WITH  
BLOODHOUND GAS  
CHROMATOGRAPH #0298



Depth Labels

Curves  
GAMMA



% Lith



Well Bore  
TVD

BEGIN LOGGING F/ 6000' MD  
@ 05:41 HRS ON 1/15/2015

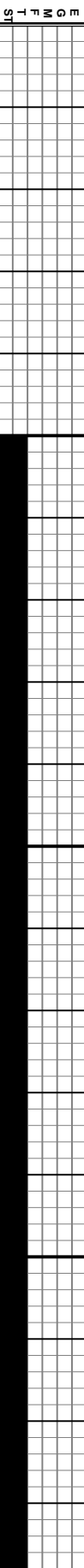
MD: 6,017'  
TVD: 5,958.27'  
Inclination: 8.6°  
Azimuth: 135.8°  
VS: -410.72'

MD: 6,112'  
TVD: 6,052.08'  
Inclination: 9.5°  
Azimuth: 136.1°  
VS: -420.02'

SHY SLTST: lt-med gy, slt-vf gr, sl frm-hd, sb pty-sb blk, gt tex, arg cmt, sh incl,  
non calc; SLTY SH: med-dk gy, slt-mic gr, sl frm, sb pty-pty, rthy-sb rthy tex, mot  
ip, non calc; mod difse, bri bl-wh string cut

SLTY SH: med-dk gy, slt-mic  
calc; SHY SLTST: lt-med gy, s  
incl, non calc; mod difse, bri b

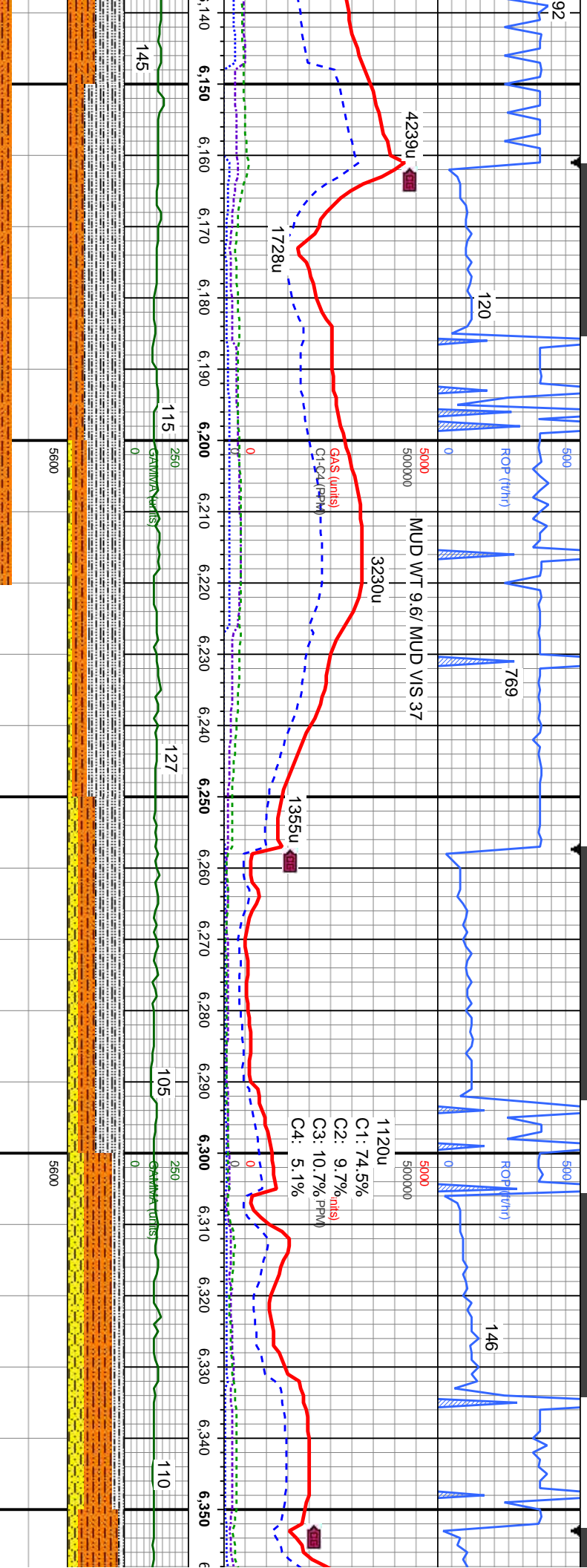
Oil Show



Images





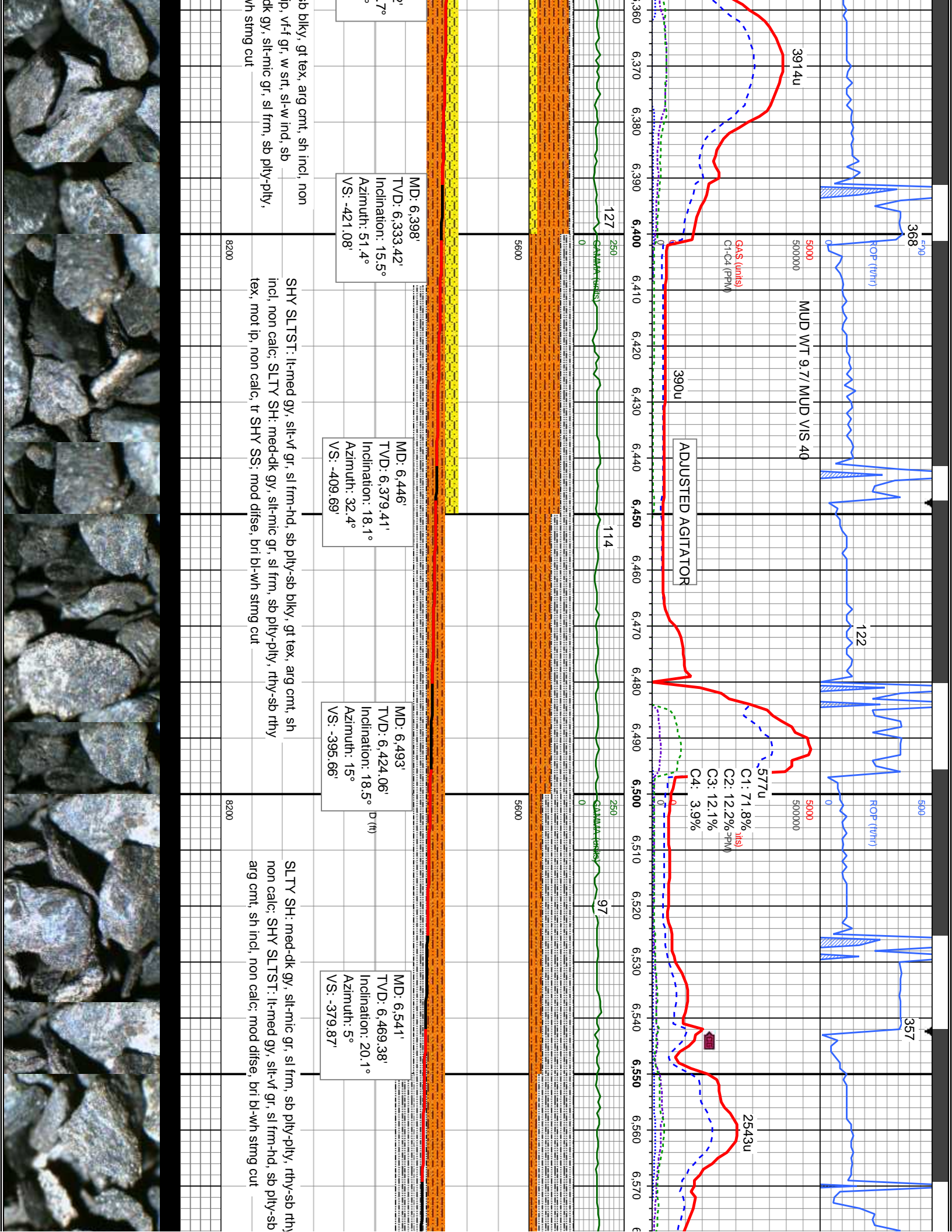


gr, sl frm, sb pty-pty, rthy-sb rthy tex, mot ip, non  
sl-vf gr, sl frm-hd, sb pty-sb bkly, gt tex, arg cnt, sh  
l-wh string cut

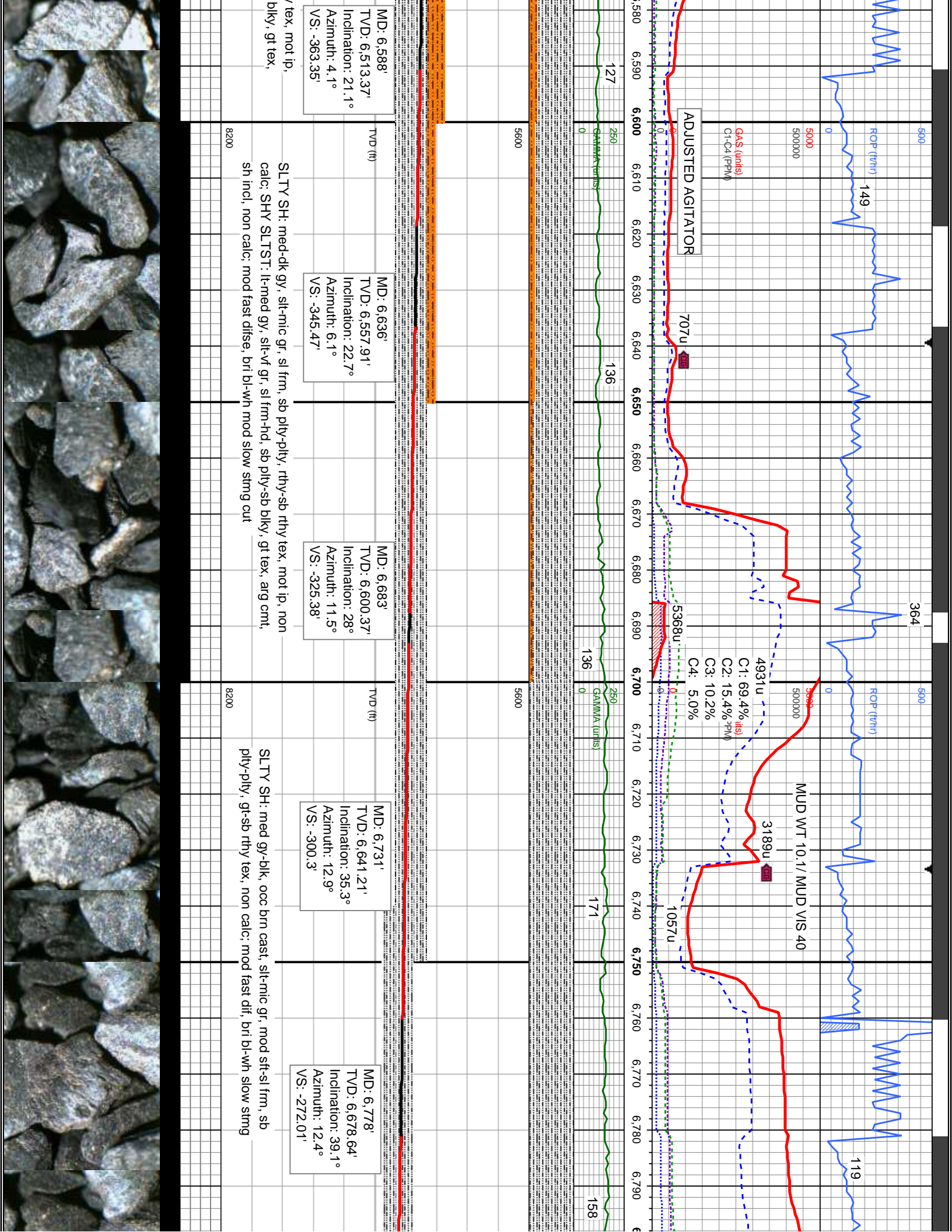
SLTY SH: med-dk gy, slt-mic gr, sl frm, sb ply-ply, rthy-sb rthy tex, mot ip, non calc; SHY SLTST: lt-med gy, slt-vf gr, sl frm-hd, sb ply-sb blkly, gt tex, arg cmt, sh incl, non calc; SHY SS: wht-lt gy, sl tmsl-op, spec thru, s&p ip, vf-f gr, w sft, sl-w ind, sb md-ang, calc incl, sh incl, arg cmt; mod diffe, bri bl-wh stmg cut

SHY SLTST: lt-med gy, slt-vf gr, sl frm-hd, sb ply-s  
calc, SHY SS: whlt gy, sl tmsl-op, spec thru, s&p  
md-ang, calc incl, sh incl, ang cmt, SLTY SH: med-  
rthy-sb rthy tex, mot ip, non calc, mod difse, bri bl-v

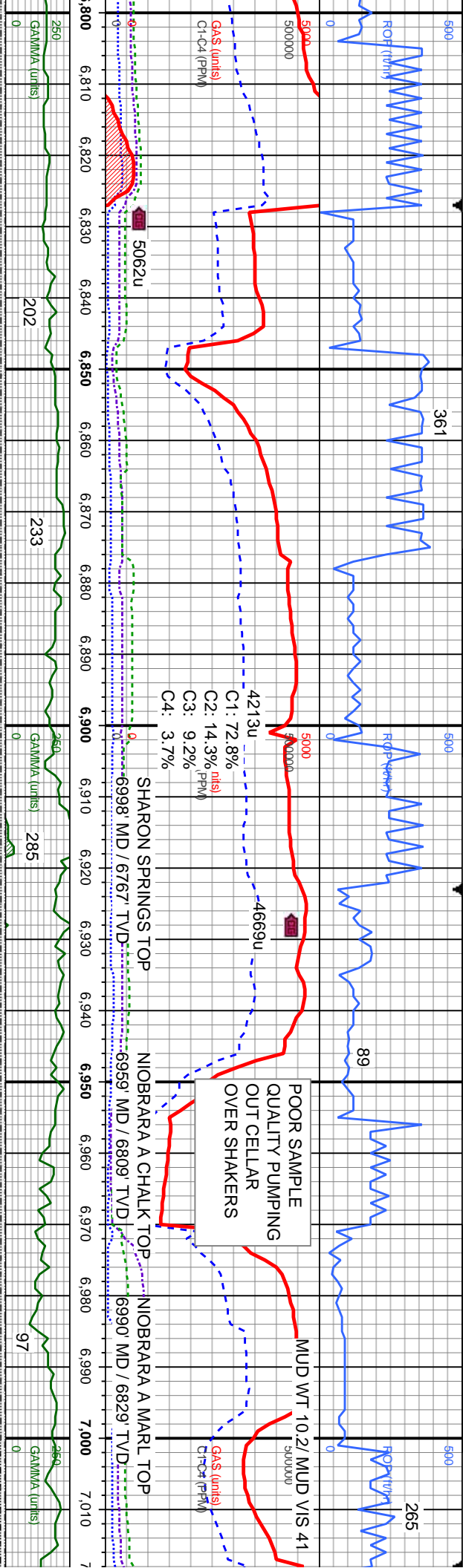












MD: 6,826'  
TVD: 6,715.13'  
Inclination: 41.9°  
Azimuth: 11°  
VS: -240.92'

MD: 6,873'  
TVD: 6,749.81'  
Inclination: 43°  
Azimuth: 10.3°  
VS: -209.25'

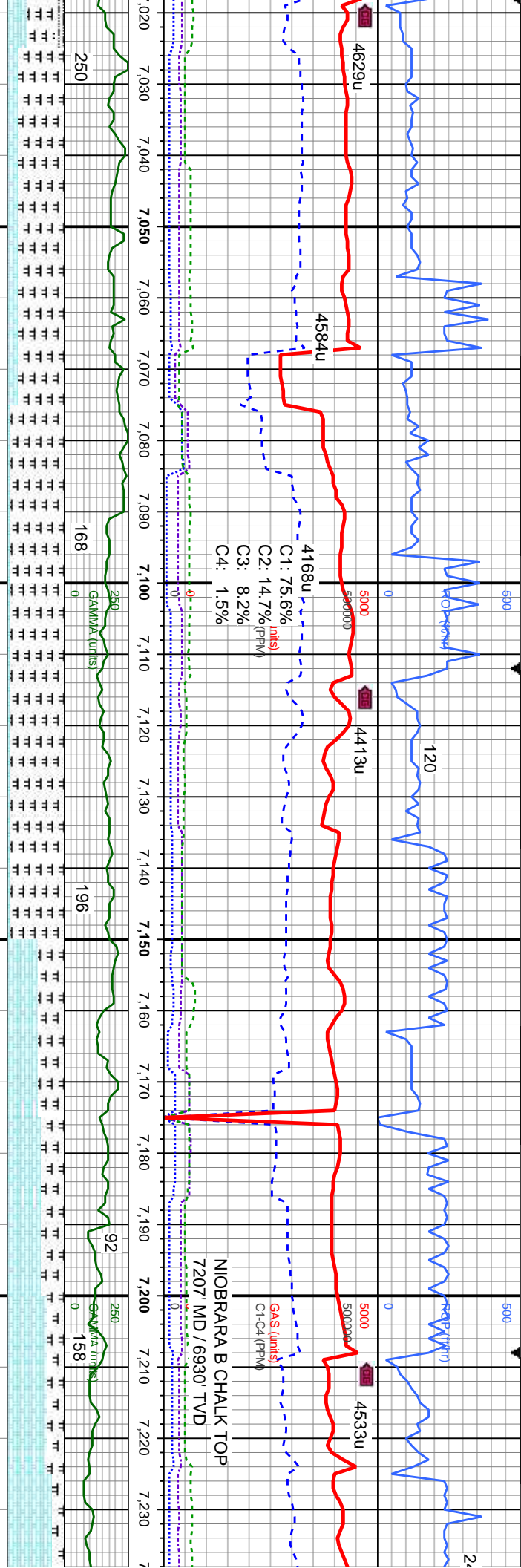
MD: 6,921'  
TVD: 6,783.9'  
Inclination: 46.5°  
Azimuth: 9.2°  
VS: -175.49'

MD: 6,969'  
TVD: 6,815.89'  
Inclination: 49.9°  
Azimuth: 6.9°  
VS: -139.72'

MD: 7,010'  
TVD: 6,849.81'  
Inclination: 49.9°  
Azimuth: 6.9°  
VS: -139.72'

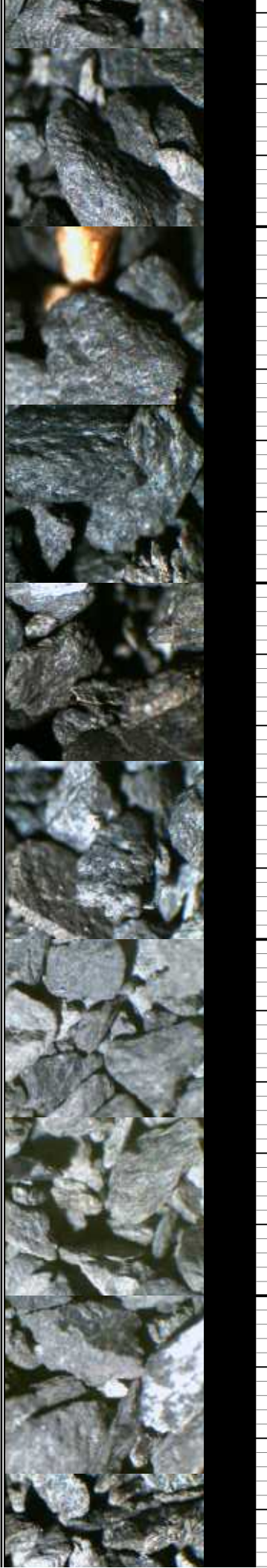
TVD (ft)		TVD (ft)		TVD (ft)		TVD (ft)		TVD (ft)		TVD (ft)	
SLTY SH: med gy-blk, occ brn cast, silt-mic gr, mod sft-sl frm, sb ply-ply, gt-sb rthy tex, non calc; mod difse, bri bl-wh slow string cut		SLTY SH: med gy-blk, occ brn cast, silt-mic gr, mod sft-sl frm, sb ply-ply, gt-sb rthy tex, non calc; rr bent flks, mod difse, bri bl-wh slow string cut		SLTY SH: med gy, silt-mic gr, mod sft-sl frm, sb ply-ply, gt-sb rthy tex, non calc; CHK: lt-med gy, mot-str, mod sft, sb bly-sb ply, sm-rthy tex, v calc; MRLST: med-dk gy, sl frm, ply-sb ply, rthy-gt tex, calc; rr bent flks, mod fast difse, bri bl-wh mod fast string cut		SLTY SH: med gy, silt-mic gr, mod sft-sl frm, sb ply-ply, gt-sb rthy tex, non calc; CHK: lt-med gy, mot-str, mod sft, sb bly-sb ply, sm-rthy tex, v calc; MRLST: med-dk gy, sl frm, ply-sb ply, rthy-gt tex, calc; rr bent flks, mod fast difse, bri bl-wh mod fast string cut		SLTY SH: med gy, silt-mic gr, mod sft-sl frm, sb ply-ply, gt-sb rthy tex, non calc; CHK: lt-med gy, mot-str, mod sft, sb bly-sb ply, sm-rthy tex, v calc; MRLST: med-dk gy, sl frm, ply-sb ply, rthy-gt tex, calc; rr bent flks, mod fast difse, bri bl-wh mod fast string cut		MRLST: med-dk gy, sl frm, ply-sb ply, rthy-gt tex, non calc; mod fast string cut	





MD: 7,064'	MD: 7,112'	MD: 7,159'	MD: 7,207'
TVD: 6,871.12'	TVD: 6,893.47'	TVD: 6,912.28'	TVD: 6,929.72'
Inclination: 59.8°	Inclination: 64.7°	Inclination: 68.1°	Inclination: 69.3°
Azimuth: 3.8°	Azimuth: 3.1°	Azimuth: 3.3°	Azimuth: 3.3°
VS: -62.66'	VS: -20.3'	VS: 22.64'	VS: 67.25'

gy, sl frm, str, lam, pty-sb	gy, sl frm, str, lam, pty-sb	gy, sl frm, str, lam, pty-sb	gy, sl frm, str, lam, pty-sb
calc: CHK: lt-med gy,	calc: CHK: lt-med gy,	calc: CHK: lt-med gy,	calc: CHK: lt-med gy,
sb blk-ty-sb pty, sm-rthy	sb blk-ty-sb pty, sm-rthy	sb blk-ty-sb pty, sm-rthy	sb blk-ty-sb pty, sm-rthy
SH: dk gy-blk gy, slt-mic gr,	SH: dk gy-blk gy, slt-mic gr,	SH: dk gy-blk gy, slt-mic gr,	SH: dk gy-blk gy, slt-mic gr,
pty-pty, gr-sb rthy tex,	pty-pty, gr-sb rthy tex,	pty-pty, gr-sb rthy tex,	pty-pty, gr-sb rthy tex,
flks: mod fast difse, bri	flks: mod fast difse, bri	flks: mod fast difse, bri	flks: mod fast difse, bri
cut	cut	cut	cut

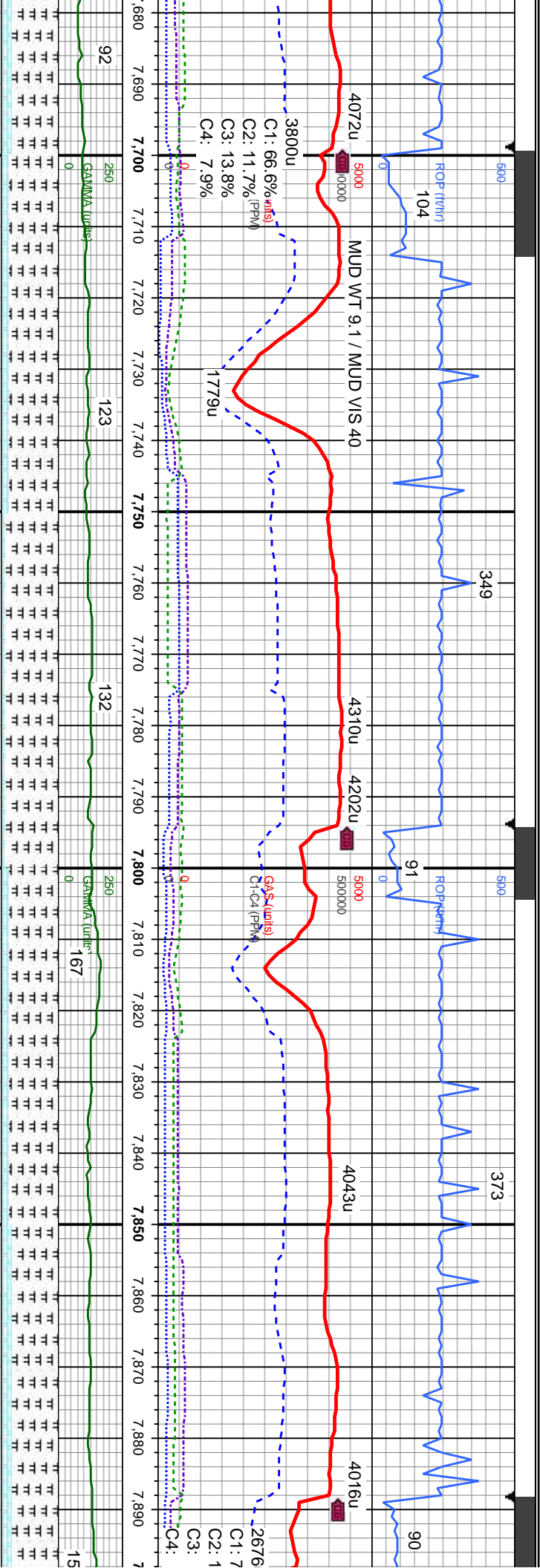








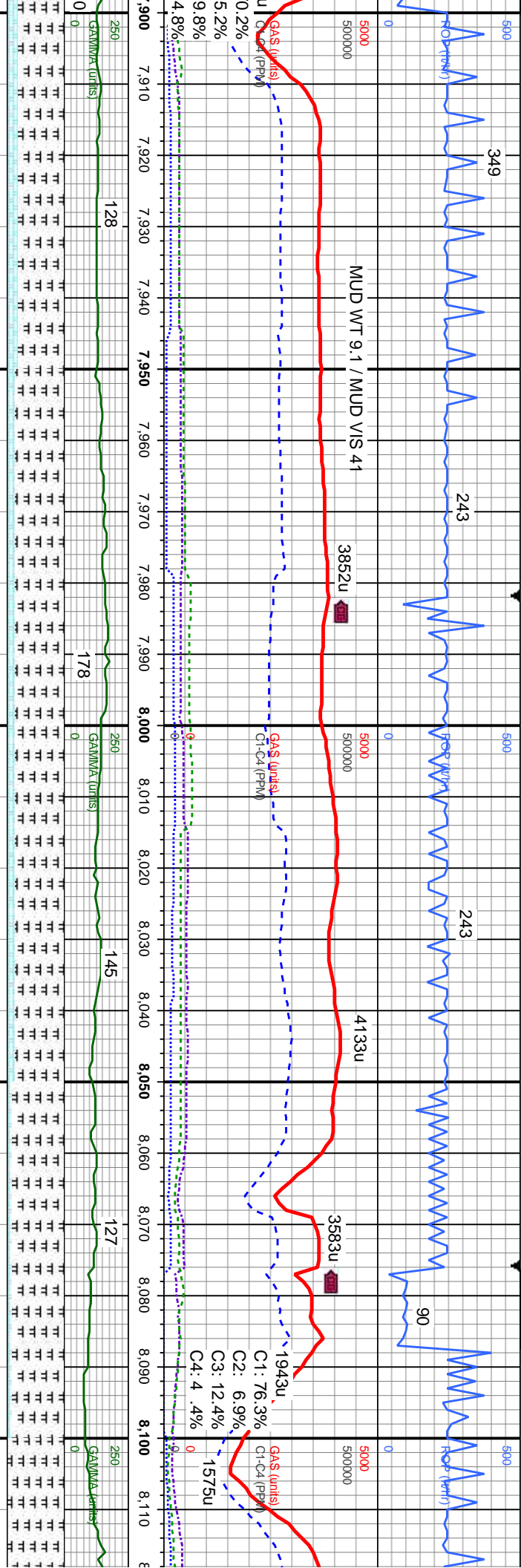




MD: 7,742'  
TVD: 6,975.98'  
Inclination: 92°  
Azimuth: 359.2°  
VS: 592.89'

MD: 7,836'  
TVD: 6,973.19'  
Inclination: 91.4°  
Azimuth: 359.2°  
VS: 685.87'

str, lam, pily-sb	MRLST: dk gy-blk, sl frm, str, lam, pily-sb	MRLST: dk gy-blk, sl frm, str, lam, pily-sb	MRLST: dk gy-blk, sl frm, str, lam, sb bily-sb	MRLST: dk gy-blk, sl frm, str, lam, sb
lt-med gy, sl	pily, rthy-gt tex, calc; CHK: lt-med gy, sl	pily, rthy-gt tex, calc; CHK: lt-med gy, sl	bily-sb pily, rthy-gt tex, calc; CHK: lt-med	gy, sl mot-str, mod sft, sb bily-sb pily,
sb pily, sm-rthy	mot-str, mod sft, sb bily-sb pily, sm-rthy	tex, v calc	mot-str, mod sft, sb bily-sb pily, sm-rthy	sm-rthy tex, v calc
8200	8200	8200	8200	



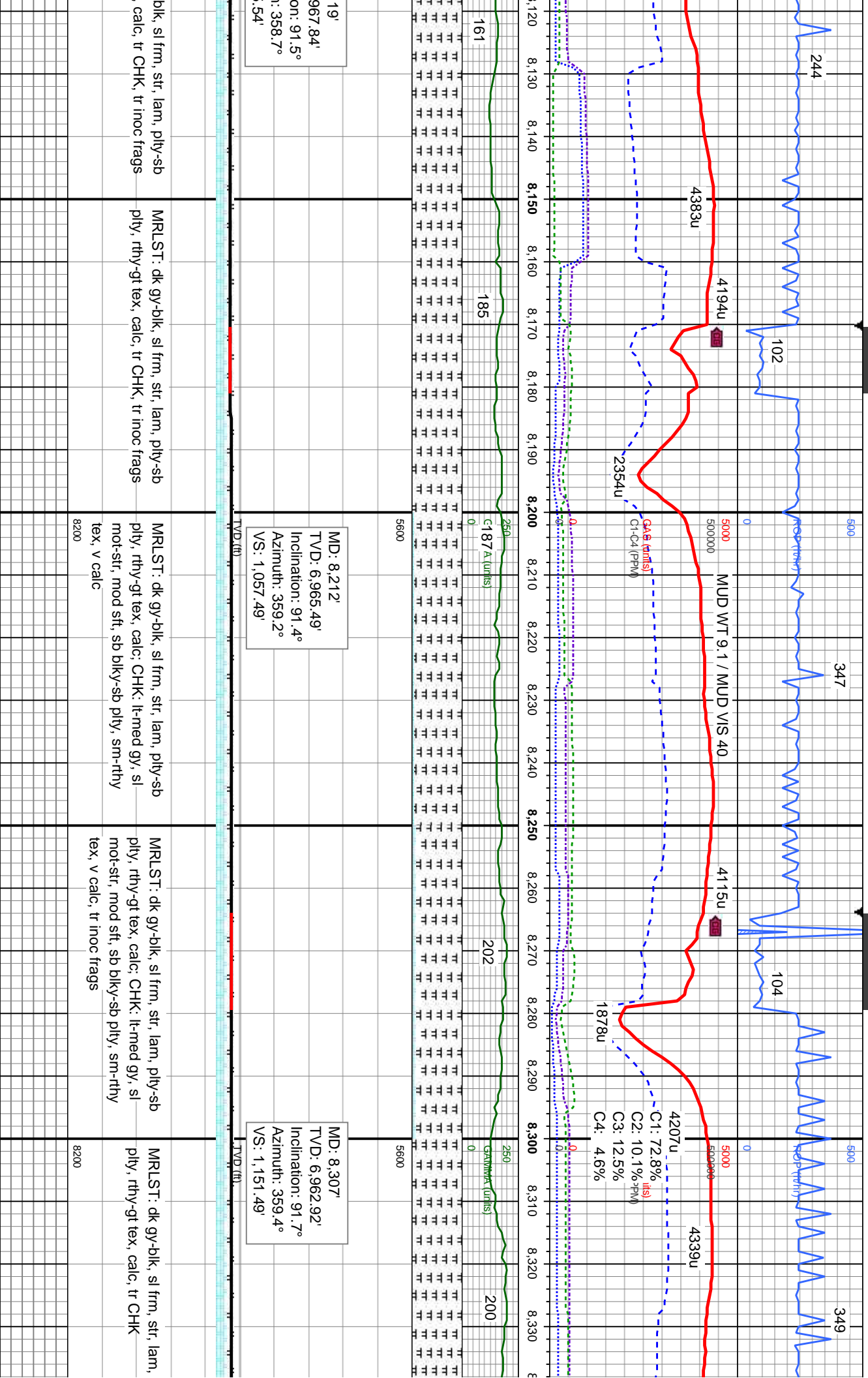
MD: 7,930'  
TVD: 6,971.22'  
Inclination: 91°  
Azimuth: 358.9°  
VS: 778.85'

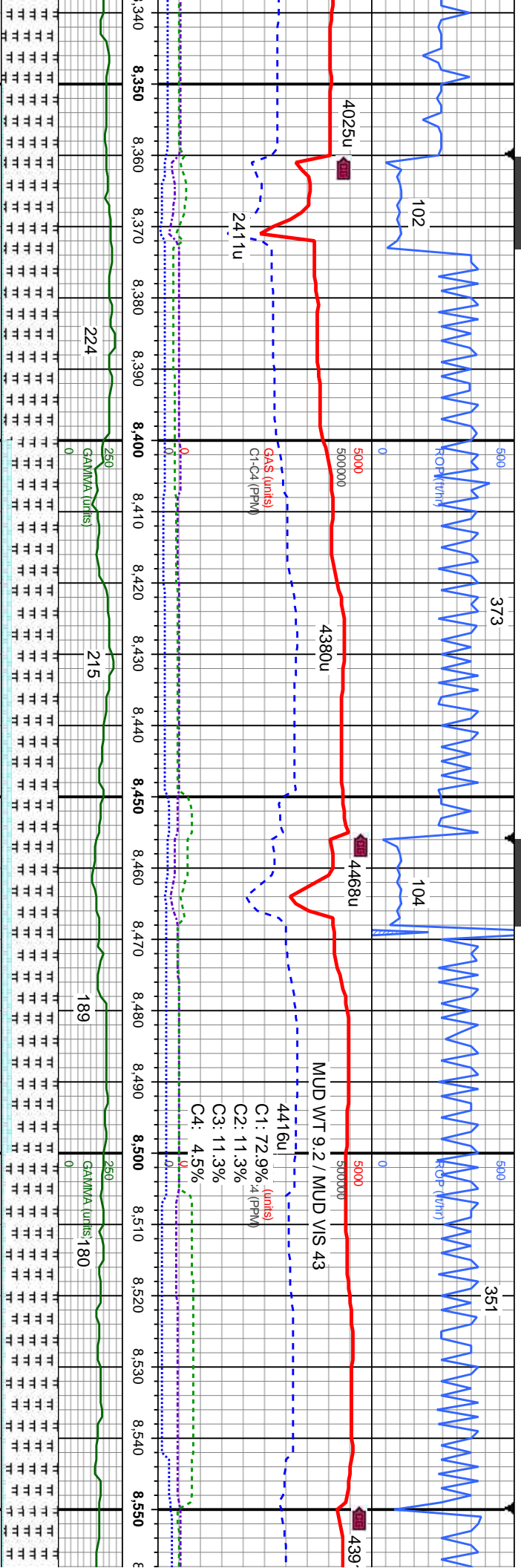
MD: 8,024'  
TVD: 6,969.75'  
Inclination: 90.8°  
Azimuth: 358.3°  
VS: 871.71'

MD: 8,1  
TVD: 6,  
Inclinati  
Azimuth  
VS: 966

MRLST: dk gy-blk, sl frm, str, lam, pty-sb pty, rthy-gt tex, calc; CHK: lt-med gy, sl mot-str, mod sft, sb blk-y-sb pty, sm-rthy tex, v calc		MRLST: dk gy-blk, sl frm, str, lam, pty-sb pty, rthy-gt tex, calc; CHK: lt-med gy, sl mot-str, mod sft, sb blk-y-sb pty, sm-rthy tex, v calc		MRLST: dk gy-blk, sl frm, str, lam, pty-sb pty, rthy-gt tex, calc; CHK: lt-med gy, sl mot-str, mod sft, sb blk-y-sb pty, sm-rthy tex, v calc		MRLST: dk gy-blk, sl frm, str, lam, pty-sb pty, rthy-gt tex, calc; CHK: lt-med gy, sl mot-str, mod sft, sb blk-y-sb pty, sm-rthy tex, v calc	
8200		8200		8200		8200	





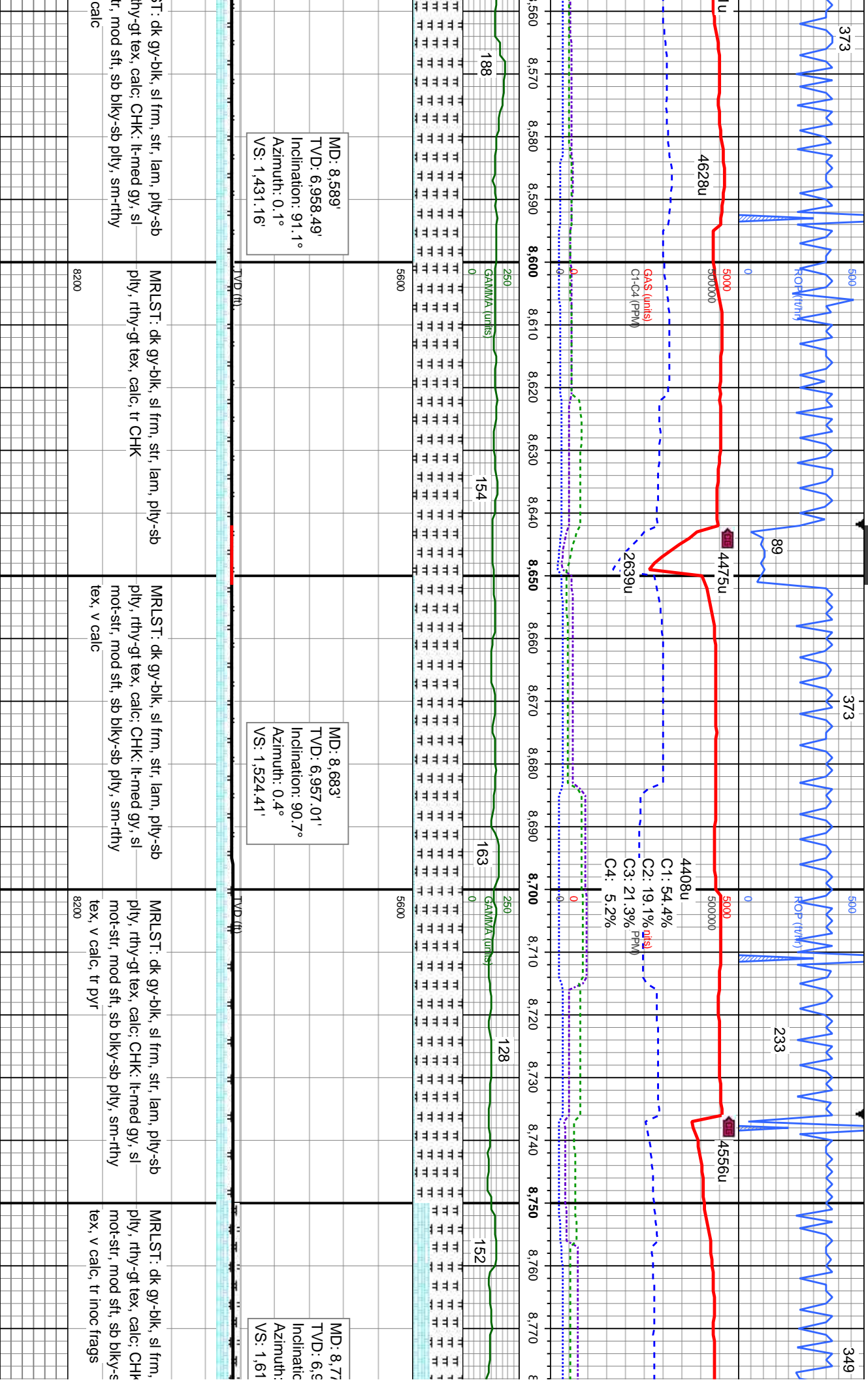


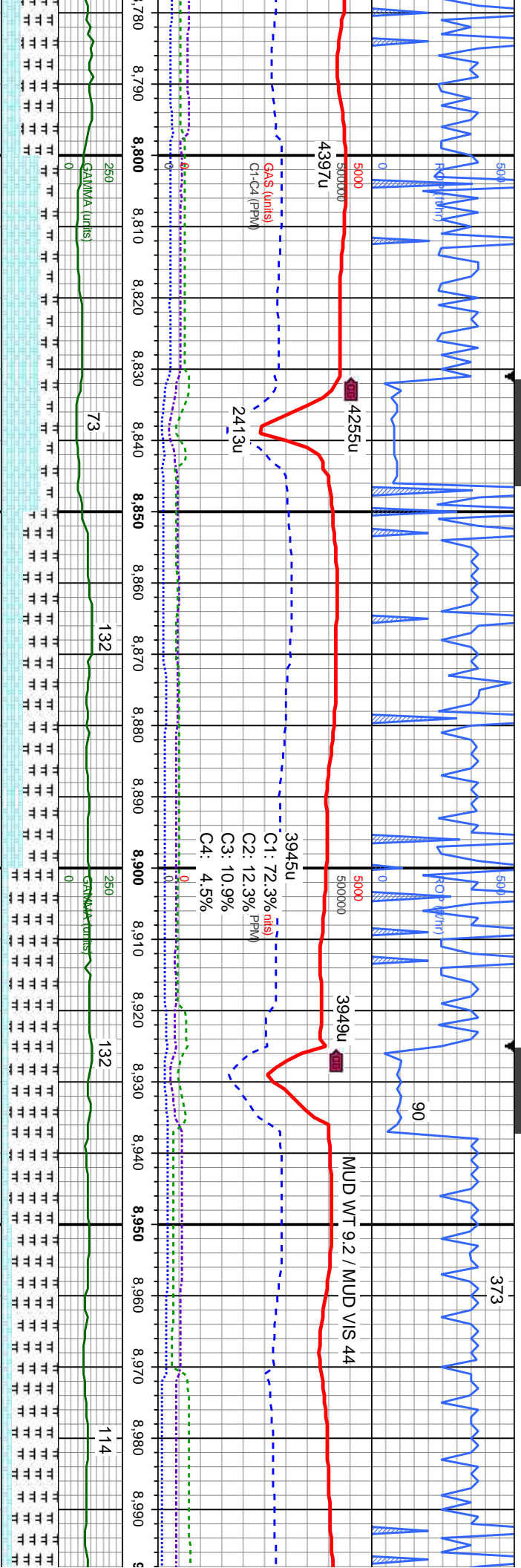
MD: 8,401'  
TVD: 6,960.79'  
Inclination: 90.9°  
Azimuth: 359.9°  
VS: 1,244.6'

MD: 8,495'  
TVD: 6,959.72'  
Inclination: 90.4°  
Azimuth: 0.8°  
VS: 1,337.87'

ply-sb	MRLST: dk gy-blk, sl frm, str, lam, ply-sb ply, rthy-gt tex, calc, CHK: lt-med gy, sl mot-str, mod sft, sb blk-y-sb ply, sm-rthy tex, v calc, tr bent	MRLST: dk gy-blk, sl frm, str, lam, ply-sb ply, rthy-gt tex, calc, CHK: lt-med gy, sl mot-str, mod sft, sb blk-y-sb ply, sm-rthy tex, v calc	MRLST: dk gy-blk, sl frm, str, lam, ply-sb ply, rthy-gt tex, calc, CHK: lt-med gy, sl mot-str, mod sft, sb blk-y-sb ply, sm-rthy tex, v calc	MRLST: dk gy-blk, sl frm, str, lam, ply-sb ply, rthy-gt tex, calc, CHK: lt-med gy, sl mot-str, mod sft, sb blk-y-sb ply, sm-rthy tex, v calc	MRLST: dk gy-blk, sl frm, str, lam, ply-sb ply, rthy-gt tex, calc, CHK: lt-med gy, sl mot-str, mod sft, sb blk-y-sb ply, sm-rthy tex, v calc
--------	----------------------------------------------------------------------------------------------------------------------------------------------------------------	-------------------------------------------------------------------------------------------------------------------------------------------------------	-------------------------------------------------------------------------------------------------------------------------------------------------------	-------------------------------------------------------------------------------------------------------------------------------------------------------	-------------------------------------------------------------------------------------------------------------------------------------------------------







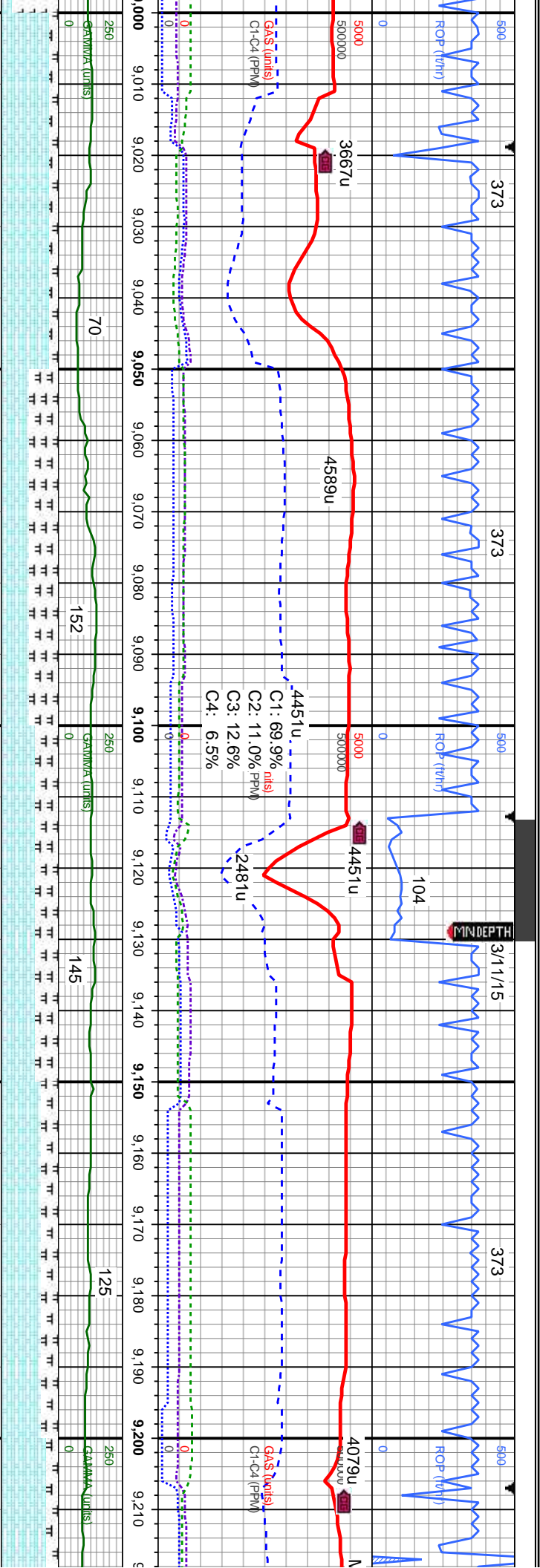
8'  
54.94'  
n: 91.8°  
0.1°  
8.63'

MD: 8.872'  
TVD: 6.952.73'  
Inclination: 90.9°  
Azimuth: 359.9°  
VS: 1,711.81'

MD: 8.966'  
TVD: 6.952.07'  
Inclination: 89.9°  
Azimuth: 359°  
VS: 1,804.89'

str. lam, pily-sb	CHK: lt-med gy, sl mot-str, mod sft, sb	MR LST: dk gy-blk, sl frm, str, lam, pily-sb	MR LST: dk gy-blk, sl frm, str, lam, pily-sb	MR LST: dk gy-blk, sl frm, str, lam, pily-sb
ply, sm-rthy	ply, sm-rthy tex, v calc, tr inoc frags;	ply, rthy-gt tex, calc; CHK: lt-med gy, sl	ply, rthy-gt tex, calc; CHK: lt-med gy, sl	ply, rthy-gt tex, calc; CHK: lt-med gy, sl
ply, sm-rthy	MR LST: dk gy-blk, sl frm, str, lam, pily-sb	mot-str, mod sft, sb blk-sb pily, sm-rthy	mot-str, mod sft, sb blk-sb pily, sm-rthy	mot-str, mod sft, sb blk-sb pily, sm-rthy
ply, rthy-gt tex, calc	ply, rthy-gt tex, calc	tex, v calc, tr inoc frags	tex, v calc	tex, v calc, tr inoc frags
8200	8200	8200	8200	8200

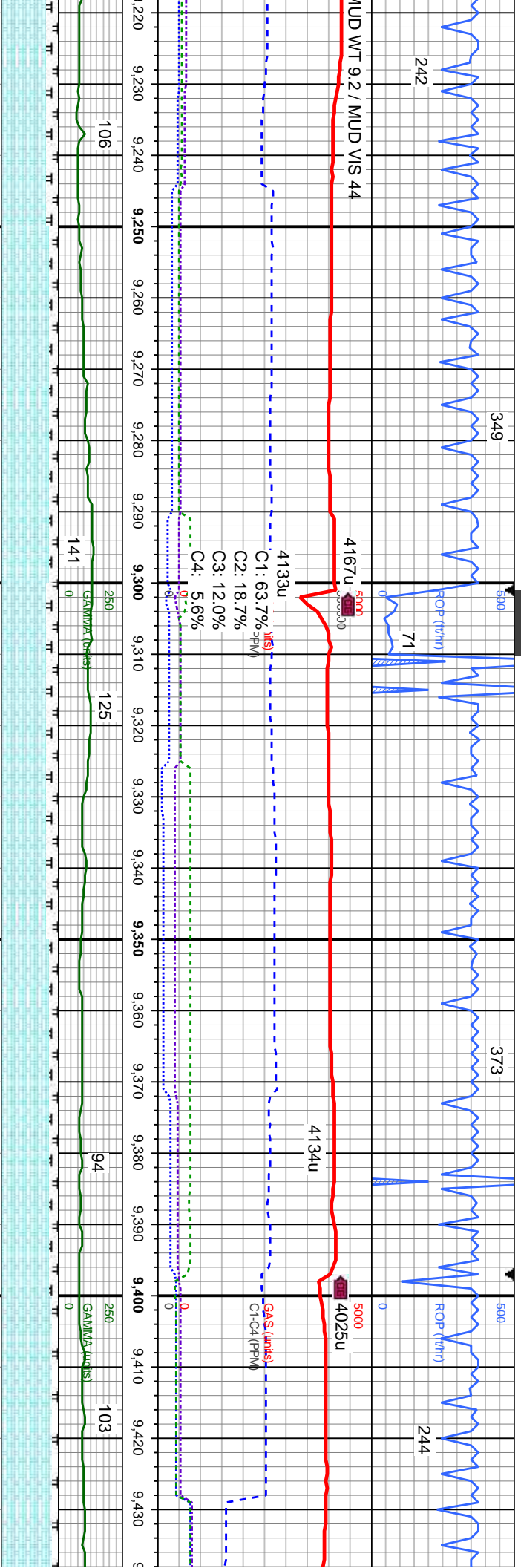




MD: 9,060'  
TVD: 6,951.58'  
Inclination: 90.7°  
Azimuth: 359.2°  
VS: 1,897.9'

MD: 9,154'  
TVD: 6,951'  
Inclination: 90°  
Azimuth: 359.9°  
VS: 1,991'

CHK: lt-med gy, sl mot-str, mod sft, sb bkly-sb pily, sm-rthy tex, v calc, tr inoc frags; MRLST: dk gy-blk, sl frm, str, lam, pily-sb pily, rthy-gt tex, calc	CHK: lt-med gy, sl mot-str, mod sft, sb bkly-sb pily, sm-rthy tex, v calc, inoc frags; MRLST: dk gy-blk, sl frm, str, lam, pily-sb pily, rthy-gt tex, calc	CHK: lt-med gy, sl mot-str, mod sft, sb bkly-sb pily, sm-rthy tex, v calc, inoc frags; MRLST: dk gy-blk, sl frm, str, lam, pily-sb pily, rthy-gt tex, calc	CHK: lt-med gy, sl mot-str, mod sft, sb bkly-sb pily, sm-rthy tex, v calc, abnt inoc frags; MRLST: dk gy-blk, sl frm, str, lam, pily-sb pily, rthy-gt tex, calc	CHK: lt-med gy, bkly-sb pily, sm- frags; MRLST: c pily-sb pily, rthy
------------------------------------------------------------------------------------------------------------------------------------------------------------------------	---------------------------------------------------------------------------------------------------------------------------------------------------------------------	---------------------------------------------------------------------------------------------------------------------------------------------------------------------	--------------------------------------------------------------------------------------------------------------------------------------------------------------------------	-------------------------------------------------------------------------------



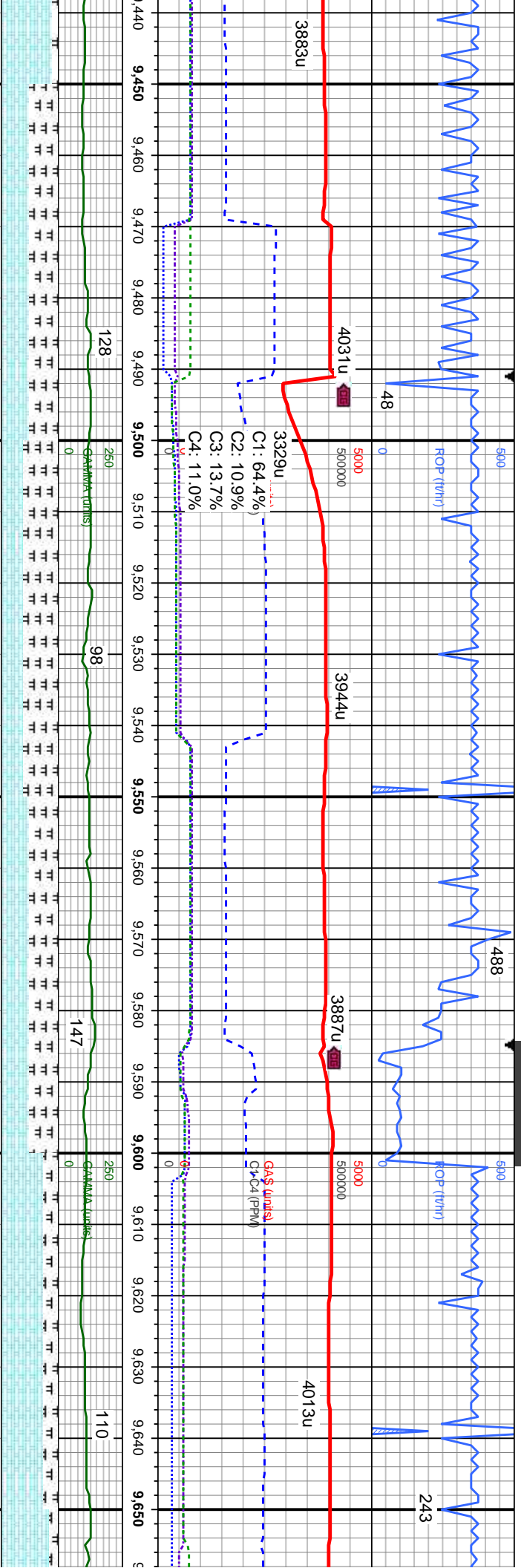
MD: 9,249'  
TVD: 6,950.84'  
Inclination: 90.2°  
Azimuth: 359.6°  
VS: 2,085.14'

MD: 9,342'  
TVD: 6,950.76'  
Inclination: 89.9°  
Azimuth: 359.7°  
VS: 2,177.75'

MD: 9,436'  
TVD: 6,950.76'  
Inclination: 89.9°  
Azimuth: 359.7°  
VS: 2,270.75'

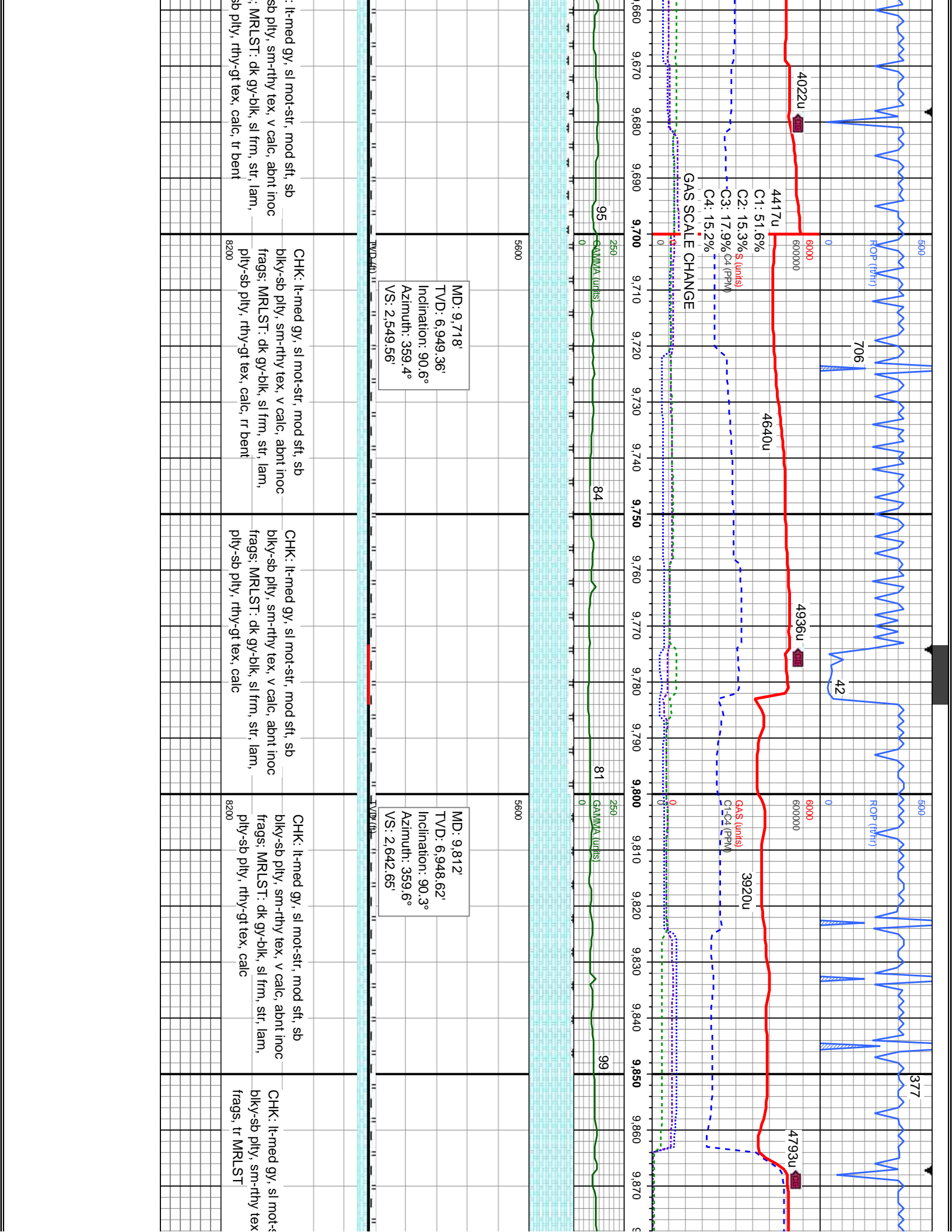
sl mot-str, mod sft, sb rthy tex, v calc, abnt inoc dk gy-blk, sl frm, str, lam, gt tex, calc	CHK: lt-med gy, sl mot-str, mod sft, sb bkly-sb pty, sm-rthy tex, v calc, abnt inoc frags: MRLST: dk gy-blk, sl frm, str, lam, pty-sb pty, rthy-gt tex, calc, tr pyr	CHK: lt-med gy, sl mot-str, mod sft, sb bkly-sb pty, sm-rthy tex, v calc, abnt inoc frags: MRLST: dk gy-blk, sl frm, str, lam, pty-sb pty, rthy-gt tex, calc	CHK: lt-med gy, sl mot-str, mod sft, sb bkly-sb pty, sm-rthy tex, v calc, abnt inoc frags: MRLST: dk gy-blk, sl frm, str, lam, pty-sb pty, rthy-gt tex, calc	CHK: lt-med gy, sl mot-str, mod sft, sb bkly-sb pty, sm-rthy tex, v calc, abnt inoc frags: MRLST: dk gy-blk, sl frm, str, lam, pty-sb pty, rthy-gt tex, calc
--------------------------------------------------------------------------------------------------------	-------------------------------------------------------------------------------------------------------------------------------------------------------------------------------	-----------------------------------------------------------------------------------------------------------------------------------------------------------------------	-----------------------------------------------------------------------------------------------------------------------------------------------------------------------	-----------------------------------------------------------------------------------------------------------------------------------------------------------------------



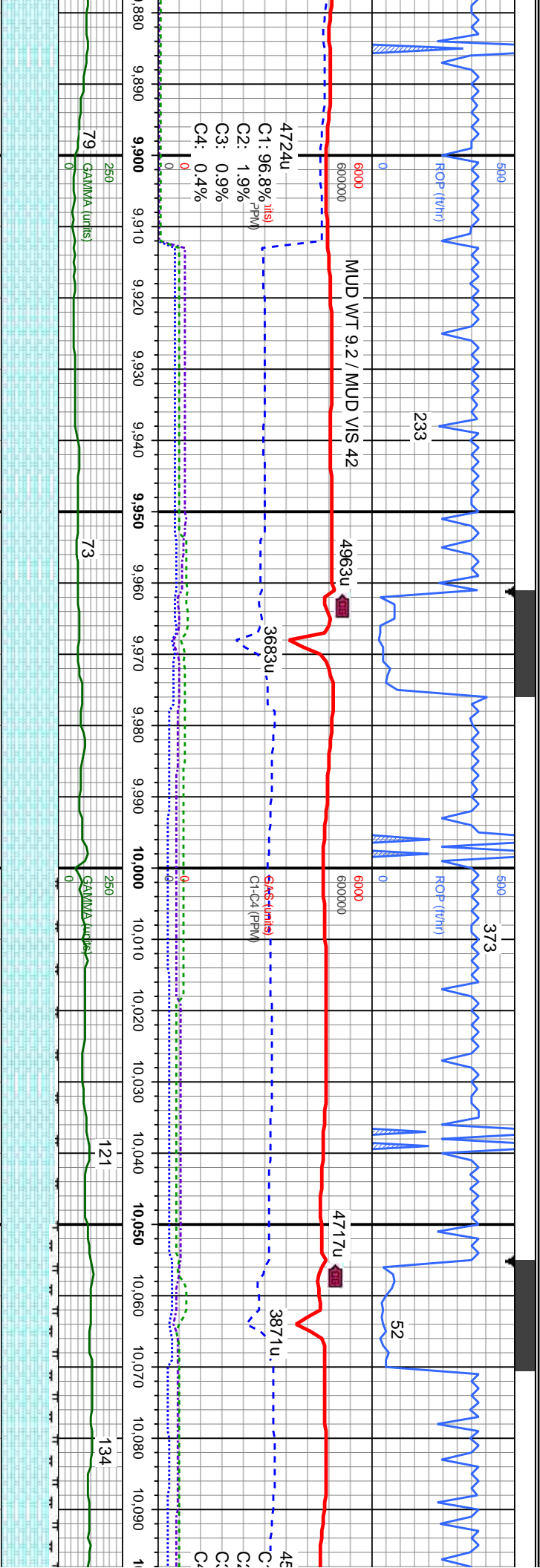


0.67' 89.9° 59.4° 35'		MD: 9,530' TVD: 6,950.35' Inclination: 90.5° Azimuth: 358.9° VS: 2,363.36'		MD: 9,624' TVD: 6,950.02' Inclination: 90.2° Azimuth: 359.7° VS: 2,456.45'	
--------------------------------	--	----------------------------------------------------------------------------------------	--	----------------------------------------------------------------------------------------	--

t, sb ont inoc r, lam,	MRLST: dk gy-blk, sl frm, str, lam, ply-sb ply, rthy-gt tex, calc; CHK: lt-med gy, sl mot-str, mod sft, sb blk-ly-sb ply, sm-rthy tex, v calc, abnt inoc frags, tr pyr	MRLST: dk gy-blk, sl frm, str, lam, ply-sb ply, rthy-gt tex, calc; CHK: lt-med gy, sl mot-str, mod sft, sb blk-ly-sb ply, sm-rthy tex, v calc, abnt inoc frags, tr pyr	MRLST: dk gy-blk, sl frm, str, lam, ply-sb ply, rthy-gt tex, calc; CHK: lt-med gy, sl mot-str, mod sft, sb blk-ly-sb ply, sm-rthy tex, v calc, abnt inoc frags, tr pyr	CHK: lt-med gy, sl mot-str, mod sft, sb blk-ly-sb ply, sm-rthy tex, v calc, abnt inoc frags, MRLST: dk gy-blk, sl frm, str, lam, ply-sb ply, rthy-gt tex, calc, tr bent	CHK blk-ly- frags ply-sb
------------------------------	---------------------------------------------------------------------------------------------------------------------------------------------------------------------------------	---------------------------------------------------------------------------------------------------------------------------------------------------------------------------------	---------------------------------------------------------------------------------------------------------------------------------------------------------------------------------	----------------------------------------------------------------------------------------------------------------------------------------------------------------------------------	-----------------------------------







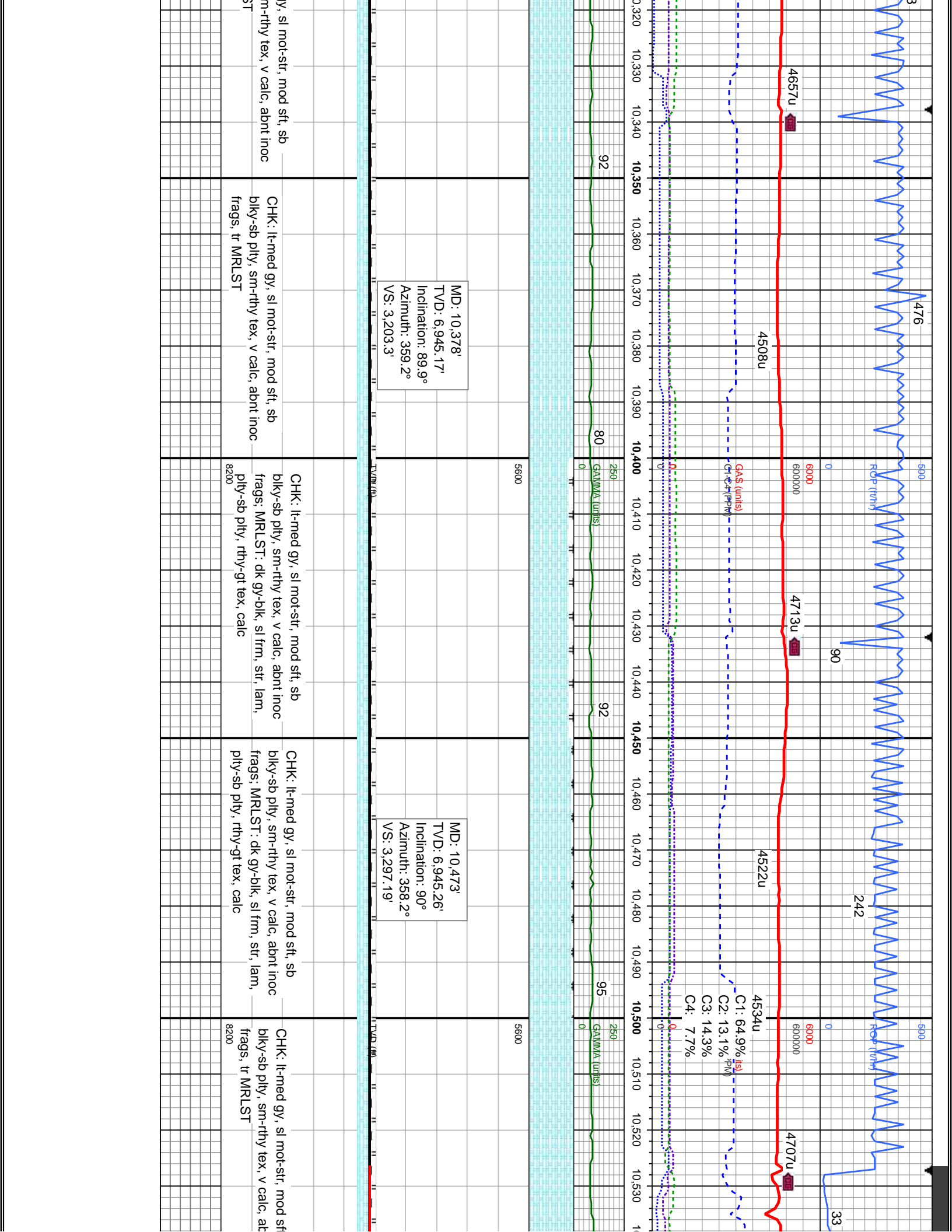
MD: 9,907'  
TVD: 6,947.71'  
Inclination: 90.8°  
Azimuth: 358.9°  
VS: 2,736.68'

MD: 10,001'  
TVD: 6,945.91'  
Inclination: 91.4°  
Azimuth: 359.7°  
VS: 2,829.71'

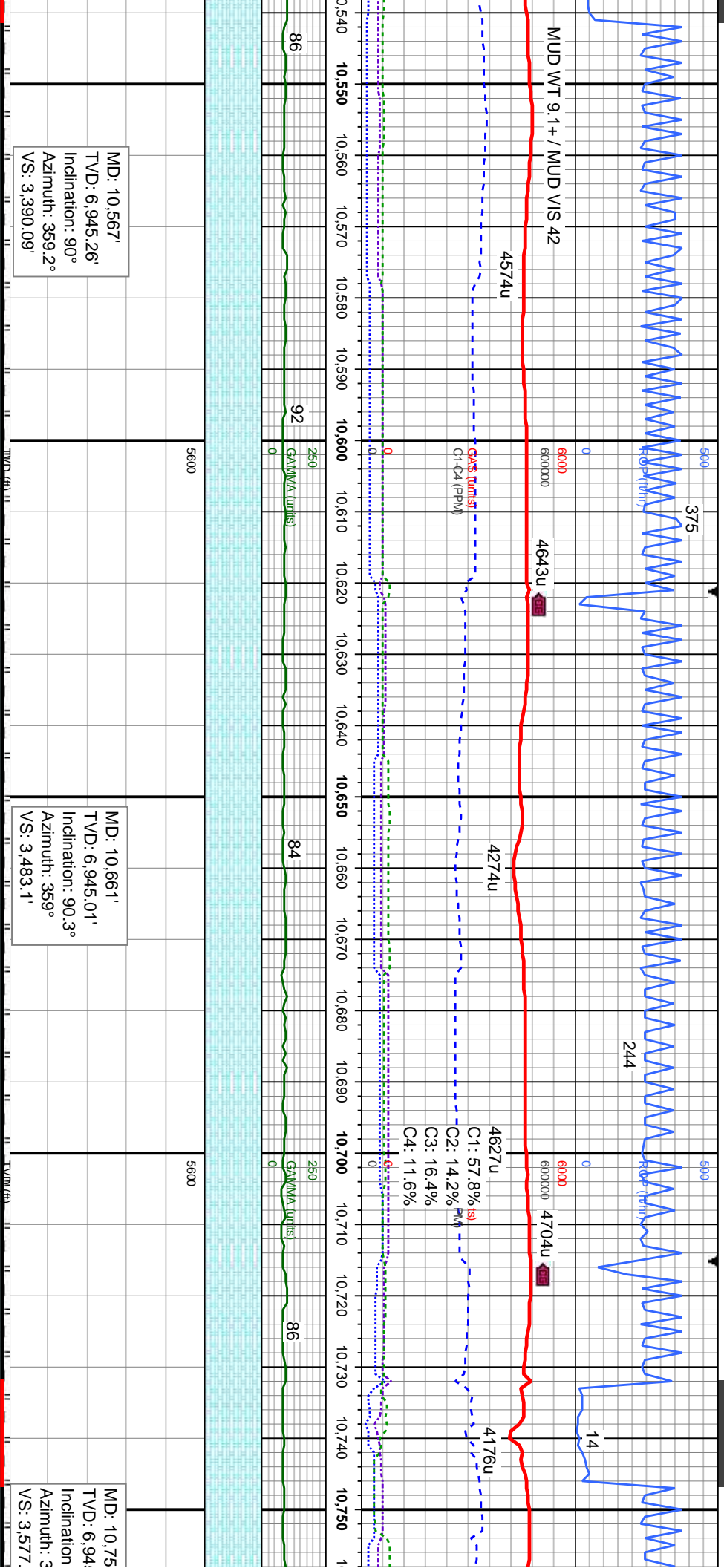
MD: 10,095'  
TVD: 6,944'  
Inclination: 91.4°  
Azimuth: 359.7°  
VS: 2,922.7'

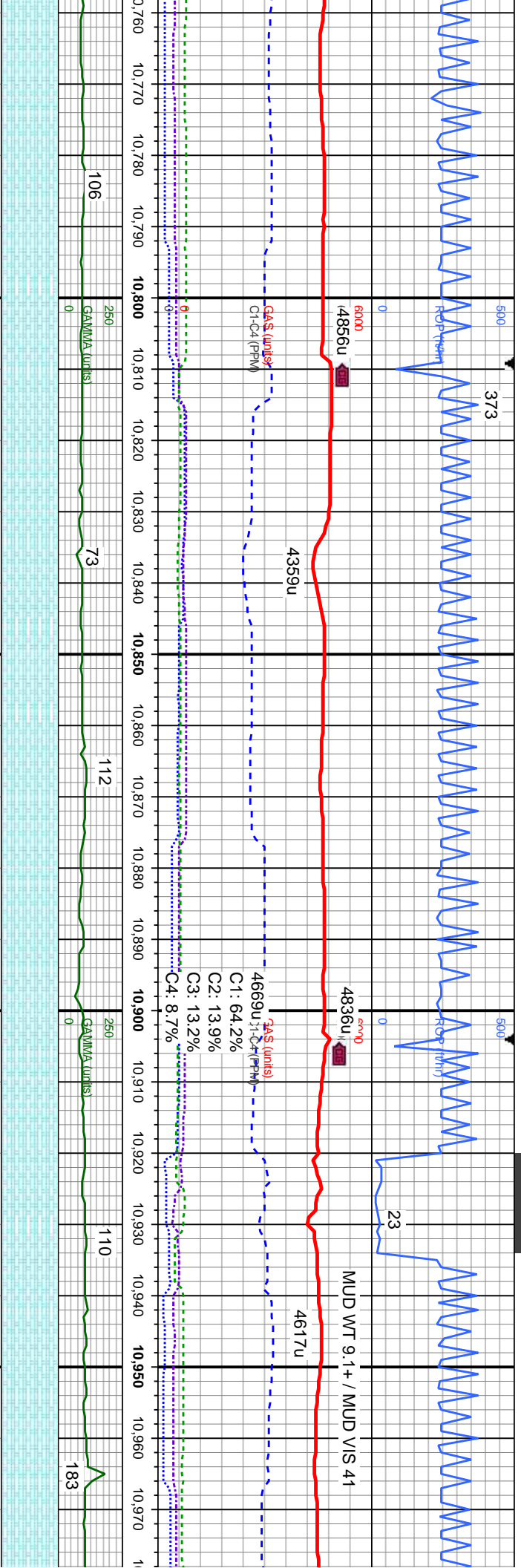
tr mod sft, sb v calc, abnt inoc	CHK: lt-med gy, sl mot-str, mod sft, sb bkly-sb pfty, sm-rthy tex, v calc, abnt inoc frags, tr MRLST	CHK: lt-med gy, sl mot-str, mod sft, sb bkly-sb pfty, sm-rthy tex, v calc, abnt inoc frags, tr MRLST	CHK: lt-med gy, sl mot-str, mod sft, sb bkly-sb pfty, sm-rthy tex, v calc, abnt inoc frags, MRLST: dk gy-blk, sl frm, str, lam, pfty-sb pfty, rthy-gt tex, calc	CHK: lt-med gy, sl mot-str, mod sft, sb bkly-sb pfty, sm-rthy tex, v calc, abnt inoc frags: MRLST: dk gy-blk, sl frm, str, lam, pfty-sb pfty, rthy-gt tex, calc
8200	8200	8200	8200	8200





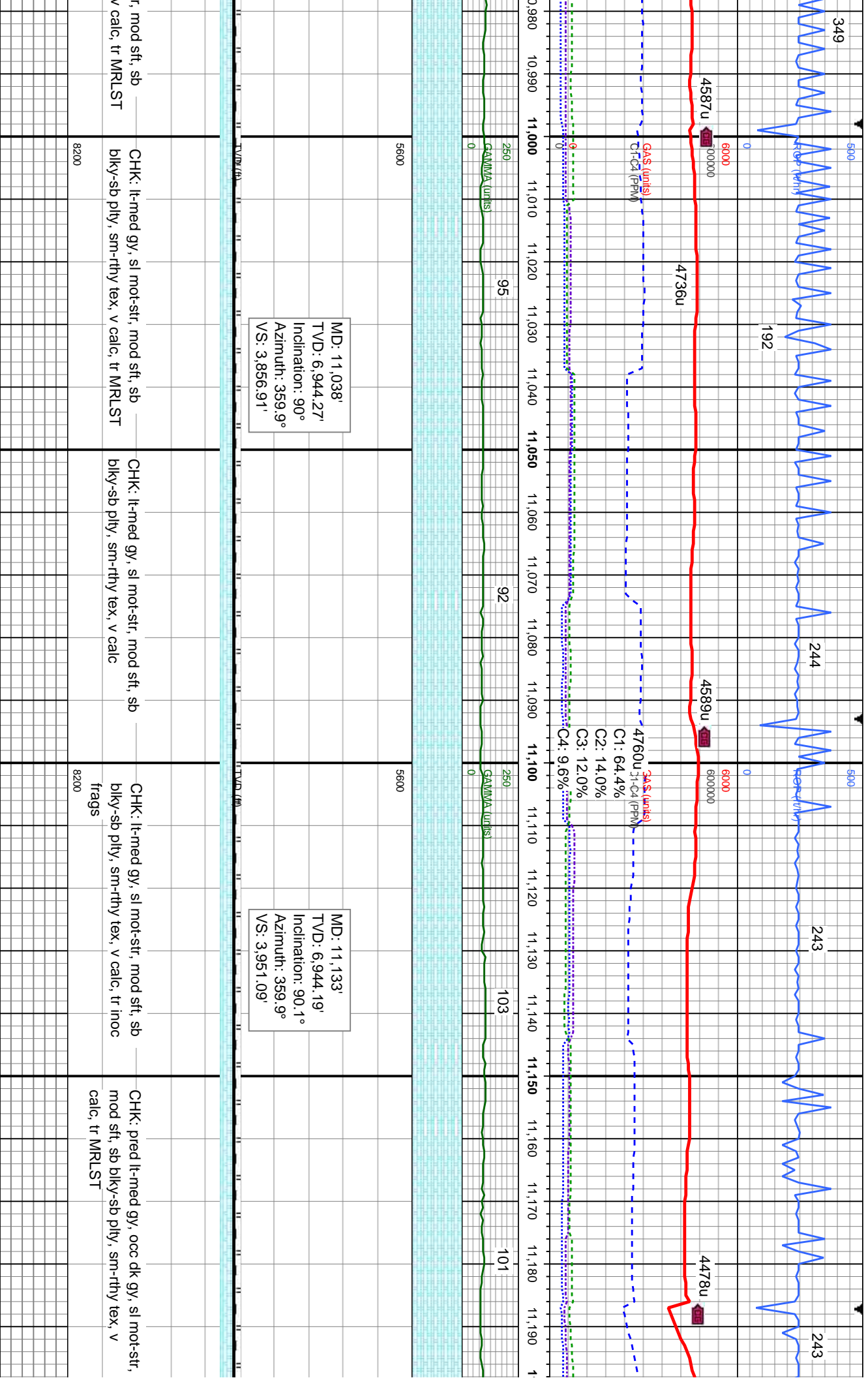


[illegible]

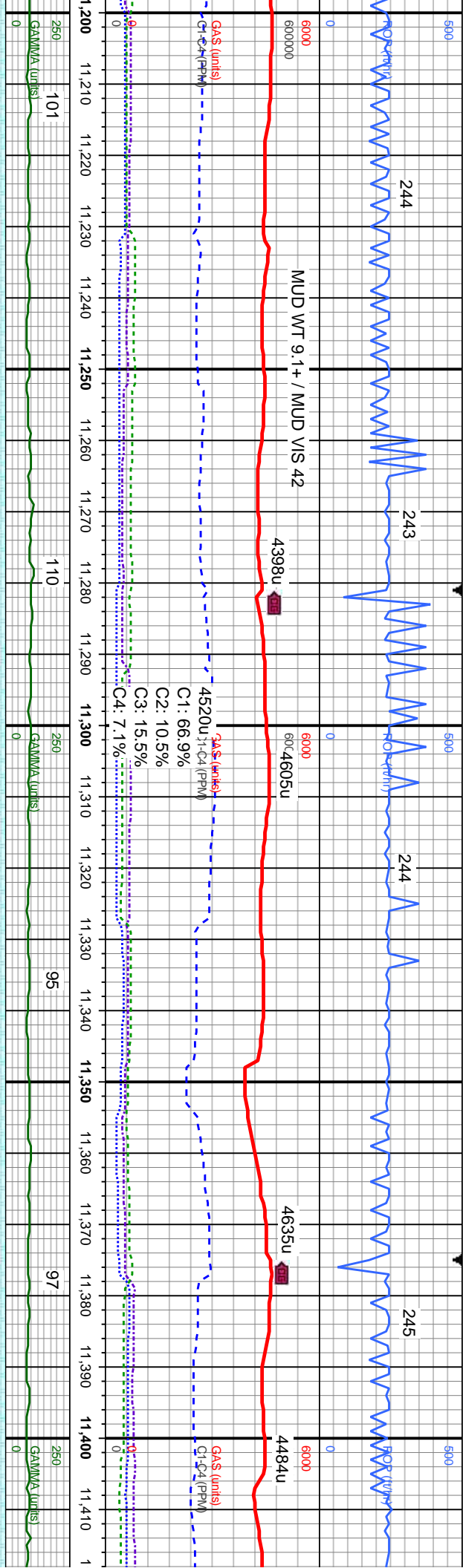


6'	5600	MD: 10,850'
5.09'		TV D: 6,944.85'
89.6°		Inclination: 90.7°
59.9°		Azimuth: 0.1°
17'		VS: 3,670.38'

lt-med gy, sl mot-str, mod sft, sb biky-sb pily, sm-rthy tex, v calc, abnt inoc tr MRLST	CHK: lt-med gy, sl mot-str, mod sft, sb biky-sb pily, sm-rthy tex, v calc, abnt inoc frags, tr MRLST	CHK: lt-med gy, sl mot-str, mod sft, sb biky-sb pily, sm-rthy tex, v calc, abnt inoc frags, tr MRLST	CHK: lt-med gy, sl mot-str, mod sft, sb biky-sb pily, sm-rthy tex, v calc, tr MRLST	CHK: lt-med gy, sl mot-str, mod sft, sb biky-sb pily, sm-rthy tex, v calc, tr MRLST
------------------------------------------------------------------------------------------------	------------------------------------------------------------------------------------------------------------	------------------------------------------------------------------------------------------------------------	----------------------------------------------------------------------------------------	----------------------------------------------------------------------------------------







MD: 11,227'  
TVD: 6,944.11'  
Inclination: 90°  
Azimuth: 358.9°  
VS: 4,044.16'

MD: 11,321'  
TVD: 6,944.36'  
Inclination: 89.7°  
Azimuth: 358.5°  
VS: 4,137.06'

MD: 1  
TVD:  
Inclin:  
Azimu  
VS: 4

CHK: It-med gy, sl mot-str, mod sft, sb biky-sb pty, sm-rthy tex, v calc	CHK: It-med gy, sl mot-str, mod sft, sb biky-sb pty, sm-rthy tex, v calc	CHK: It-med gy, sl mot-str, mod sft, sb biky-sb pty, sm-rthy tex, v calc	CHK: pried It-med gy, sl mot-str, mod sft, sb biky-sb pty, sm-rthy tex, v calc	CHK: pried It-m sb biky-sb pty,
8200	8200	8200	8200	8200

