



Scale: 5" / 100'  
Measured Depth Log

Well Name Matrix J-29HN

Location SEC. 29-T6N-R65W

State COLORADO

County WELD

Country USA

Rig Number FRONTIER 8

API Number 051234070100

Field GREELEY

Region DJ BASIN

Drilling Completed 3/8/2015

Spud Date 12/30/2014

Surface Coordinates 502FSL, 2186FWL

Bottom Hole Coordinates 465FNL, 2450FWL

Ground Elevation 4708'

K.B. Elevation 4730.5'

Logged Interval 6000' MD To 11545'

Total Depth 11545'

Formation NIOBRARA C CHALK

Type of Drilling Fluid FWLSND

Operator

Company Bayswater Exploration and Production LLC.

Address 730 17th Street, Suite 610  
Denver, CO 80202

Geologist

Name ROBERT DAVIS, LISA KANT, ANDREW MARTEN

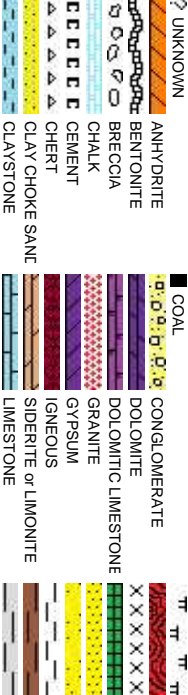
Company COLUMBINE LOGGING, INC.

Address 602 S. LIPAN ST.  
DENVER, CO 80223

Zone Color Coding



Rock Types



Accessories

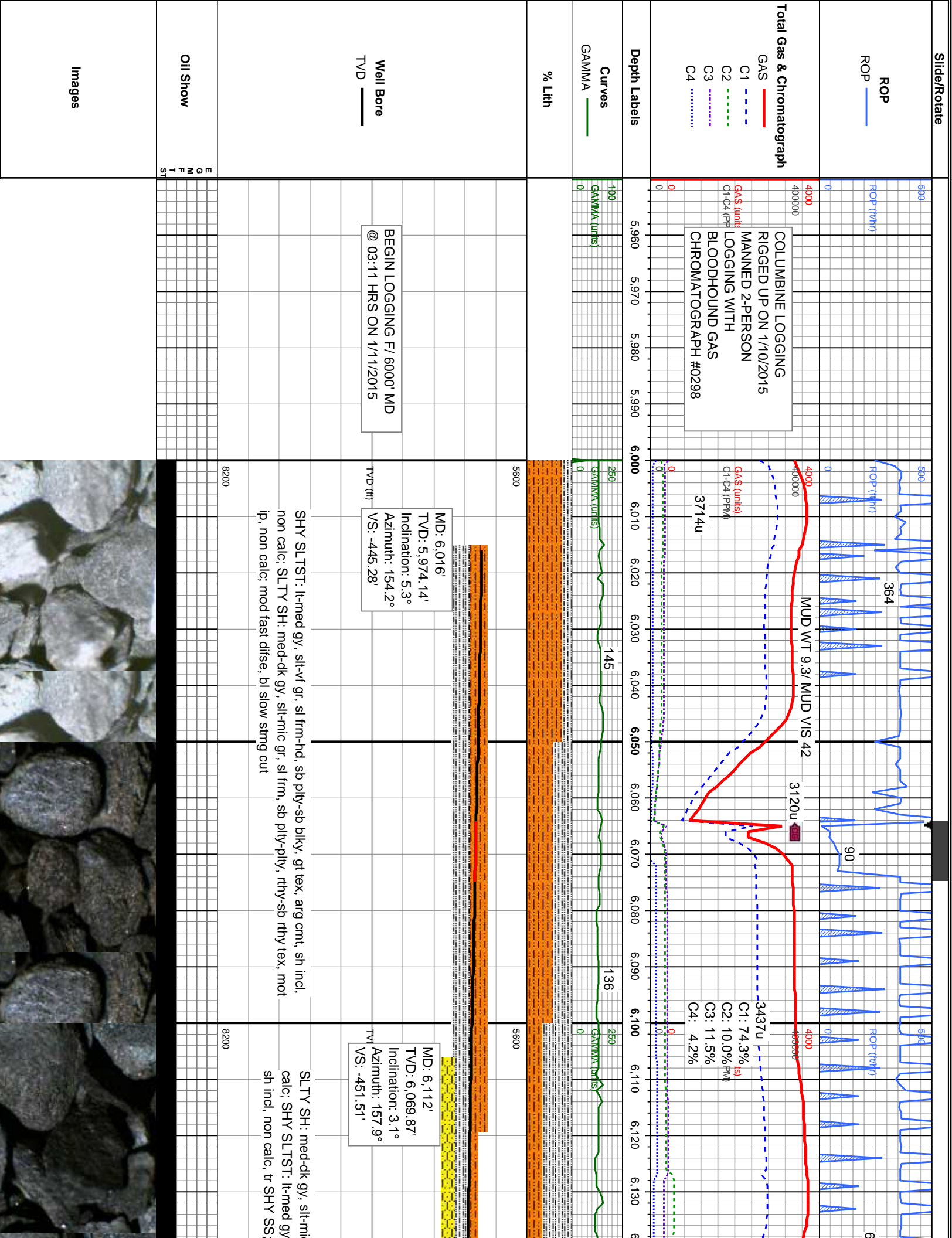
<b>Fossils</b>	GASTROPOD	ARGILLITE GRAIN	HEAVY MINERAL
INOCERAMUS	B BENTONITE	K KAOLIN	
ALGAE	O OOLITE	BIT BITUMENOUS SUBSTANCE	M MARCASTITE
AMPHIPORA	O OSTRACOD	B BRECCIA FRAGMENTS	T MARLSTONE
BELEMNITE	P PELECYPOD	C CALCAREOUS	M MICACEOUS
BIOCLASTIC	P PELLET	C CARBONACEOUS FLAKES	M MINERAL CRYSTALS
BRACHIOPOD	P PISOLITE	CHT CHLT	N NODULES
BRYOZOA	P PLANT REMAINS	C COAL - THIN BEDS	P PHOSPHATE PELLETS
CEPHALOPOD	S PLANT SPORES	D DOLOMITIC	P PYRITE
CORAL	S SCAPHOPOD	F FELDSPAR	B SALT CAST
CRINOID	S STROMATOPOROID	F FERRUGINOUS PELLET	S SANDY
E ECHINOID			S SIDERITE
F FISH		F FERRUGINOUS	S SILICEOUS
F FORAMINIFERA	A ANHYDRITIC	G GLAUCONITE	S SILTY
F FOSSIL	A ARGILLACEOUS	G GYPSIFEROUS	T TUFFACEOUS
			<b>Stringer</b>
			ANHYDRITE STRINGER
			BENTONITE STRINGER
			COAL STRINGER
			DOLOMITE STRINGER
			GYPSUM STRINGER
			LIMESTONE STRINGER
			MARLSTONE (CALC) STRG
			MARLSTONE (DOL) STRG
			SANDSTONE STRINGER
			SHALE STRINGER
			SILTSTONE STRINGER

Other Symbols

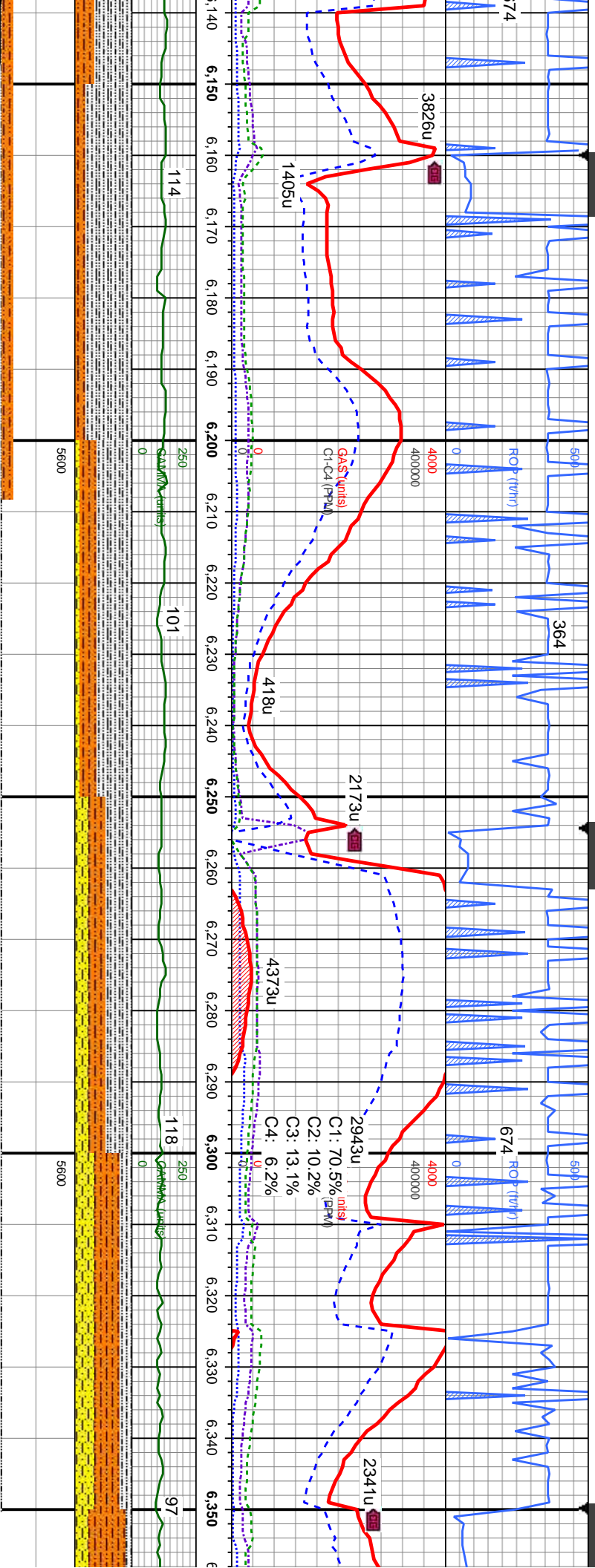
<b>Oil Show</b>	P PINPOINT	DST INTERVAL	WIRELINE TESTED - LEFT	E EARTHY
V VUGGY	FAULT	WIRELINE TESTED - RT	F FINELYXLN	
<b>Engineering</b>	FORMATION TOP	DRILL STEM TEST	G GRAINSTONE	
D DEAD	GAS SHOW	MN DEPTH	L LITHOGRAPHIC	
E EVEN	OIL SHOW		M MICROXLN	
Q QUESTIONABLE	BIT			
S SPOTTED STAINING	C CONNECTION (UP)	<b>Rounding</b>	M MUDSTONE	
		A ANGULAR	P PACKSTONE	
<b>Porosity</b>	C CONNECTION (DOWN)			
	C CONNECTION GAS	N NORMAL FAULT	R ROUNDED	W WACKESTONE
E EARTHY	C CONNECTION GAS (LEFT)	O OVERTURNED STRATA	B SUBANG	
F FENESTRAL	T TRIP GAS	R REVERSE FAULT	S SUBRAND	
F FRACTURE	T TRIP GAS (LEFT)	C CASING		<b>Sorting</b>
I INTERCRYSTALLINE	D DOWN TIME GAS	S SIDEWALL CORE (LEFT)	M MODERATE	
I INTEROOLITIC	D DOWN TIME GAS (LEFT)	S SIDEWALL CORE (RIGHT)	P POOR	
M MOLDIC	C CORE - LOST	S SLIDE	W WELL	
O ORGANIC	C CORE - RECOVERED	S SURVEY	C CRYPTOXLN	



MARLSTONE		SHALY SANDSTONE
METAMORPHIC		SHALY SILTSTONE
NO SAMPLE		SILTY SHALE
SANDSTONE		SILTSTONE
SALT		SILTSTONE
SANDSTONE		TILL
SALT-PEPPER SAND		TUFF
SHALE		WELDED TUFF
SHALE COLORED		
SHALE GRAY		







MD: 6,207'  
TVD: 6,164.8'  
Inclination: 1.2°  
Azimuth: 175.3°  
VS: -454.81'

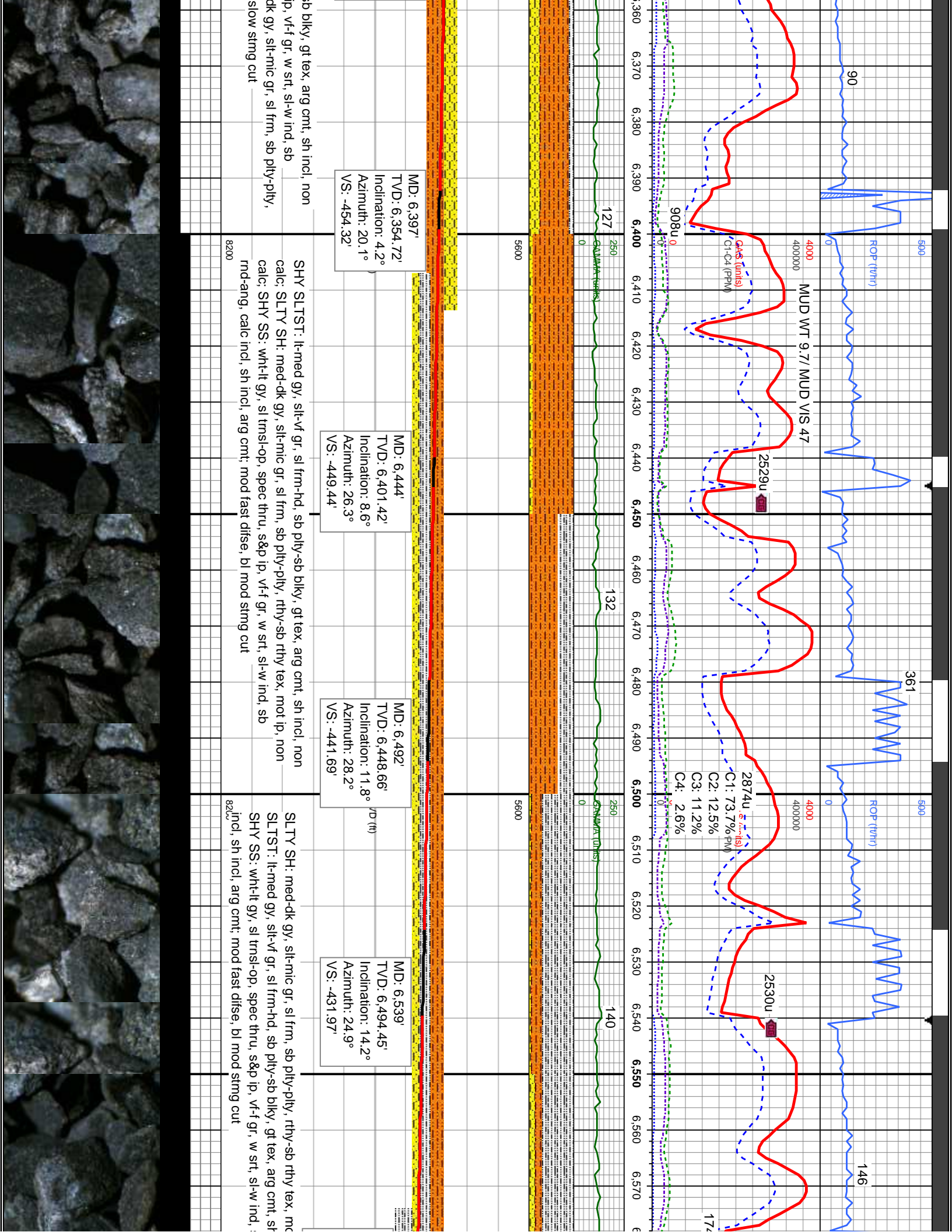
c gr, sl frm, sb ply-ply, rthy-sb rthy tex, mot ip, non  
 , slt-vf gr, sl frm-hd, sb ply-sb blk, gt tex, arg cmt,  
 mod fast difse, bl slow stmg cut

SLTY SH: meed-*dk gy*, slt-mic *gr*, sl frm, sb pily-pily, rthy-sb rthy *tex*, mot *ip*, no SHY SLTST: lt-med *gy*, slt-vf *gr*, sl frm-hd, sb pily-sb *blky*, gt *tex*, aig *cmt*, sh i calc; SHY SS: wht-lt *gy*, sl tms-op, spec *thru*, s&p *ip*, v-f *gr*, w *sft*, sl-w *ind*, sb md-ang, calc *incl*, sh *incl*, aig *cmt*, mod *fast disse*, bl *slow string cut*

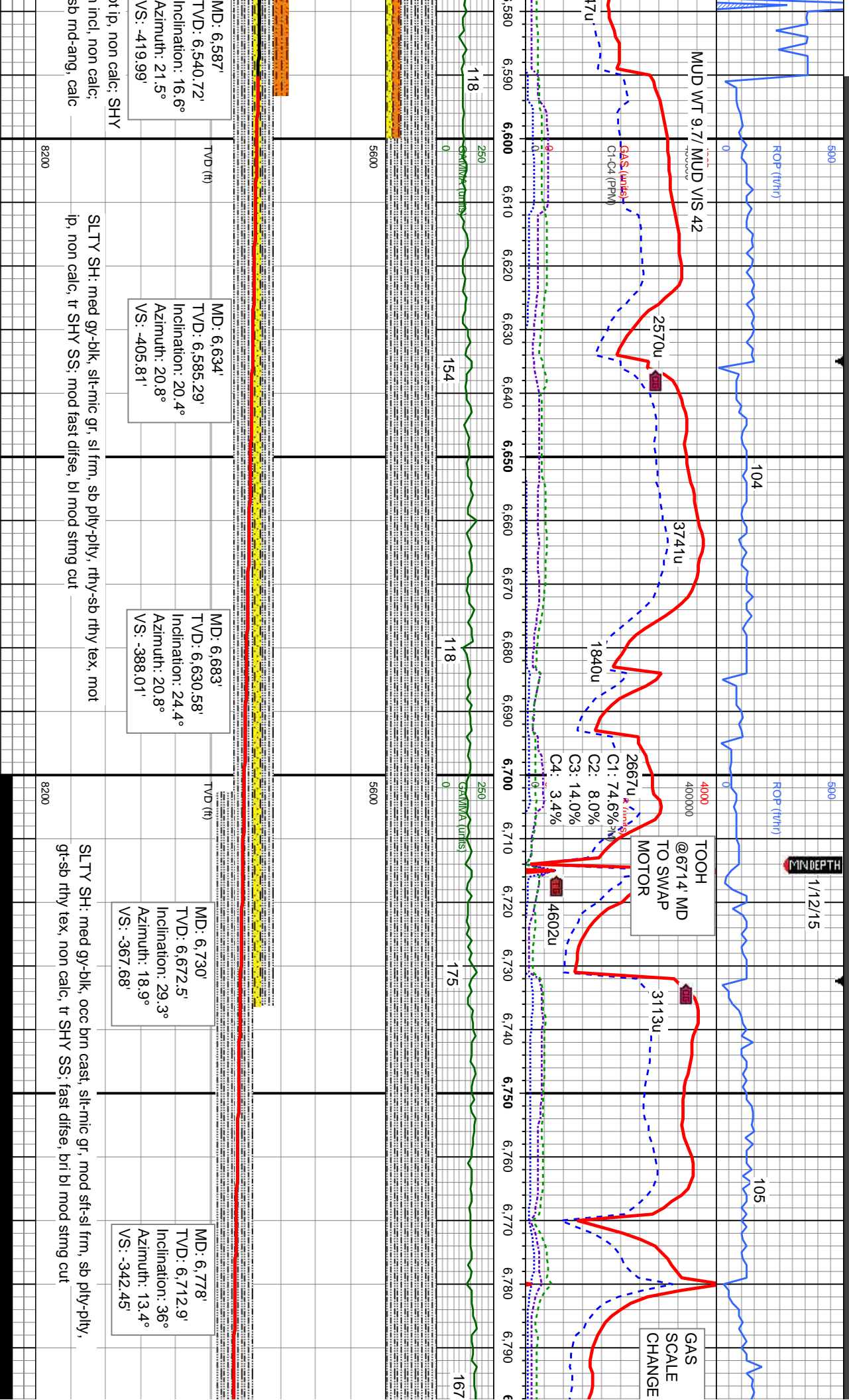
MD: 6,302'  
TVD: 6,259.78'  
Inclination: 1.5°  
Azimuth: 255.3°  
VS: -456.18'

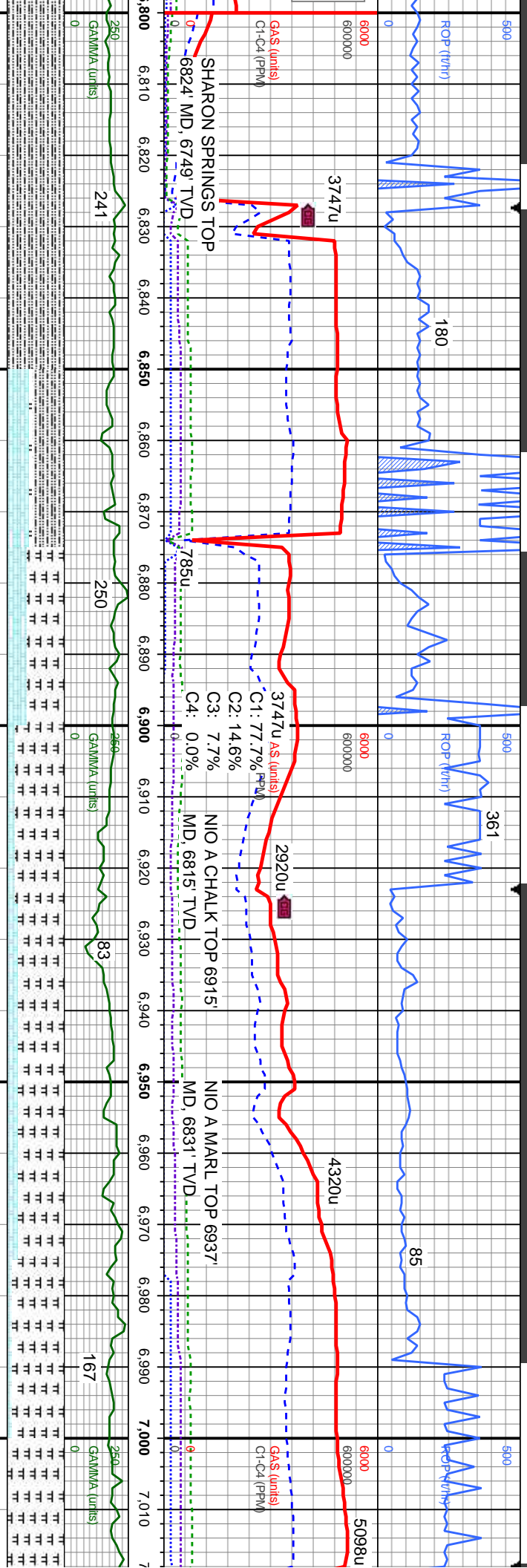
SHY SLTST: lt-med gy, slt-vf gr, sl frm-hd, sb ply-s  
calc; SHY SS: wht-lt gy, sl tmsl-op, spec thru, s&p  
md-ang, calc incl, sh incl, arg cmt; SLTY SH: med-  
rthy-sb rthy tex, mot ip, non calc; mod fast disse, bl

MD: 6,349'
TVD: 6,306.77'
Inclination: 1°
Azimuth: 299.6°
VS: -456.19'









MD: 6,825'  
TVD: 6,749.85'  
Inclination: 40.4°  
Azimuth: 5°  
VS: -313.6'

MD: 6,873'  
TVD: 6,785.65'  
Inclination: 43.2°  
Azimuth: 358.5°  
VS: -281.66'

MD: 6,920'  
TVD: 6,819.26'  
Inclination: 45.5°  
Azimuth: 355.9°  
VS: -248.99'

MD: 6,968'  
TVD: 6,851.96'  
Inclination: 48.6°  
Azimuth: 354.1°  
VS: -214.23'

MD: 7,015'  
TVD: 6,882'  
Inclination:  
Azimuth: 3  
VS: -178.6'

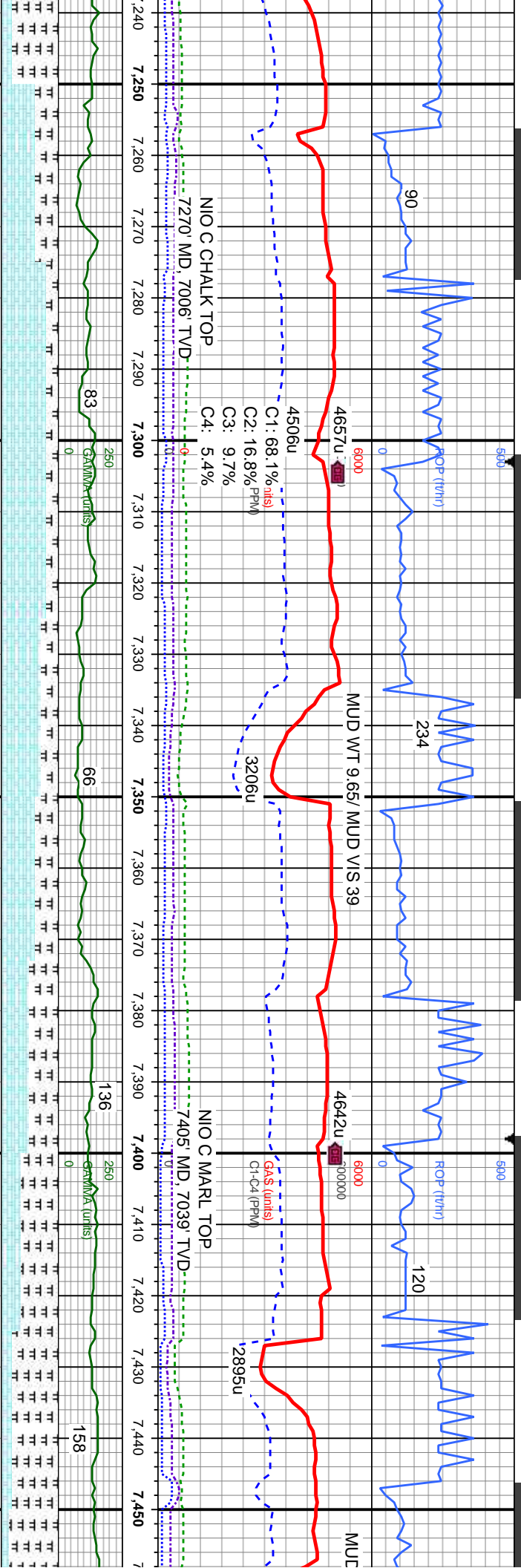
TVD (ft)	SLTY SH: med gy-blk, occ brn cast, silt-mic gr, mod sft-si frm, sb pty-ply, gt-sb rthy tex, non calc, CHK: lt-med gy, str, wh incl, sl sft, brit, sb pty-sb blk, sm-sb rthy tex, v calc; MRLST: dk gy-blk, silt-mic gr, mod sft-si frm, sb pty-ply, gt-rthy tex, calc, tr bent flks, tr SHY SS, fast difse, bri bl mod stmg cut	
	SLTY SH: med gy-blk, occ brn cast, silt-mic gr, mod sft-si frm, sb pty-ply, gt-sb rthy tex, non calc, CHK: lt-med gy, str, wh incl, sl sft, brit, sb pty-sb blk, sm-sb rthy tex, v calc; MRLST: dk gy-blk, silt-mic gr, mod sft-si frm, sb pty-ply, gt-rthy tex, calc, tr bent flks, tr SHY SS, fast difse, bri bl mod stmg cut	
TVD (ft)	MRLST: dk gy-blk, silt-mic gr, mod sft-si frm, sb pty-ply, gt-rthy tex, calc, CHK: lt-med gy, str, wh incl, sl sft, brit, sb pty-sb blk, sm-sb rthy tex, v calc, tr bent flks, tr pyr, fast difse, bri bl mod fast stmg-milky cut	
	MRLST: dk gy-blk, silt-mic gr, mod sft-si frm, sb pty-ply, gt-rthy tex, calc, CHK: lt-med gy, str, wh incl, sl sft, brit, sb pty-sb blk, sm-sb rthy tex, v calc, tr bent flks, tr pyr, fast difse, bri bl mod fast stmg-milky cut	











MD: 7,254'  
TVD: 7,001.04'  
Inclination: 68.8°  
Azimuth: 358.7°  
VS: 25.96'

MD: 7,301'  
TVD: 7,016.69'  
Inclination: 72.3°  
Azimuth: 358.5°  
VS: 70.13'

MD: 7,349'  
TVD: 7,029.31'  
Inclination: 77.2°  
Azimuth: 358.3°  
VS: 116.26'

MD: 7,396'  
TVD: 7,038'  
Inclination: 81.5°  
Azimuth: 358.3°  
VS: 162.27'

MD: 7,444'  
TVD: 7,043.51'  
Inclination: 85.3°  
Azimuth: 358.2°  
VS: 209.77'

o, v gt tex, p, stf-sl com fos	CHK: lt-med gy, sl stf-sl frm, sb ply-sb blk-y-irreg, glos tex, v calc; MRLST: dk gy-blk, slt-mic gr, sl frm, brit, sb ply-sb blk-y, lam ip, v gt tex, calc; tr bent; fast difse, bri bl mod fast stmg-milky cut	CHK: lt-med gy, sl stf-sl frm, sb ply-sb blk-y-irreg, glos tex, v calc; MRLST: dk gy-blk, slt-mic gr, sl frm, brit, sb ply-sb blk-y, lam ip, v gt tex, calc; tr bent; fast difse, bri bl mod fast stmg-milky cut	CHK: lt-med gy, sl stf-sl frm, sb ply-sb blk-y-irreg, glos tex, v calc; MRLST: dk gy-blk, slt-mic gr, sl frm, brit, sb ply-sb blk-y, lam ip, v gt tex, calc; tr bent; fast difse, bri bl mod fast stmg-milky cut	MRLST: dk gy-blk, slt-mic gr, sl frm, brit, sb ply-sb blk-y, gt tex, calc; CHK: lt-med gy, sl stf-sl frm, sb ply-sb blk-y-irreg, glos tex, v calc; fast difse, bri bl mod fast stmg-milky cut	MRL
--------------------------------	------------------------------------------------------------------------------------------------------------------------------------------------------------------------------------------------------------------	------------------------------------------------------------------------------------------------------------------------------------------------------------------------------------------------------------------	------------------------------------------------------------------------------------------------------------------------------------------------------------------------------------------------------------------	-----------------------------------------------------------------------------------------------------------------------------------------------------------------------------------------------	-----



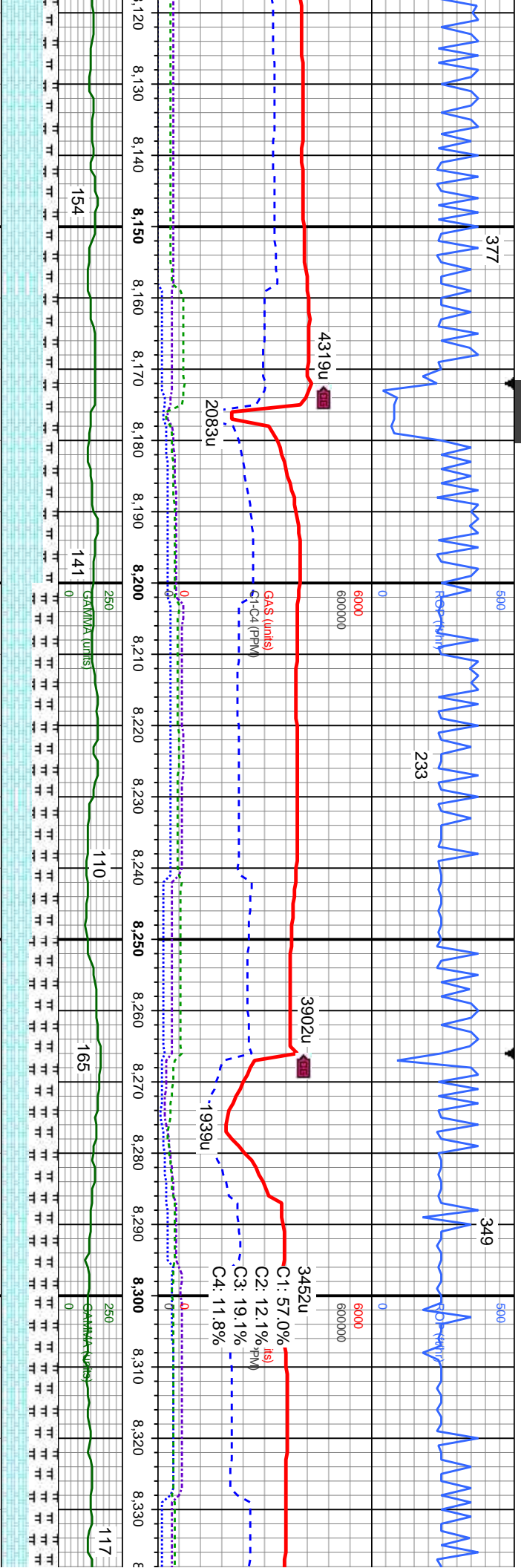












8'  
42.05'  
n: 90.7°  
359.7°  
6'

MD: 8,213'  
TVD: 7,041.8'  
Inclination: 89.6°  
Azimuth: 0.4°  
VS: 976.92'

MD: 8,306'  
TVD: 7,043.1'  
Inclination: 88.8°  
Azimuth: 0.9°  
VS: 1,069.82'

sl sft-sl frm, sb pty-sb  
tex, v calc; MRLST: dk  
f, sl frm, brt, sb pty-sb  
t tex, calc, rr bent, tr foss;  
mod fast stimg-milky cut

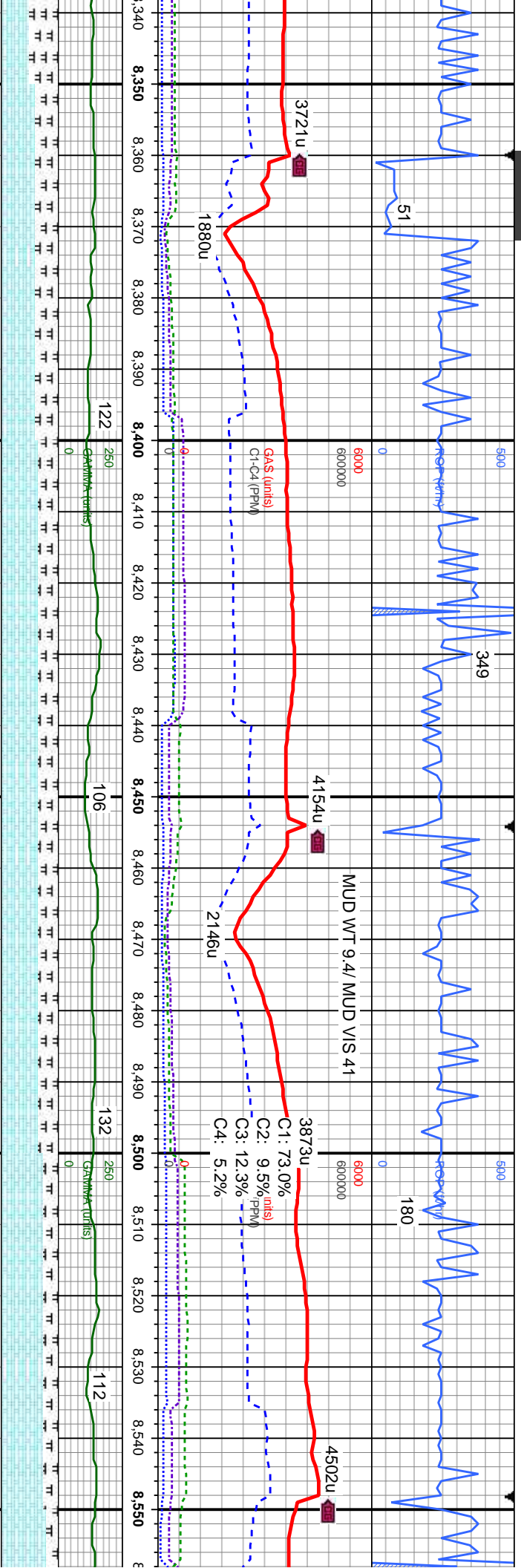
CHK: lt-med gy, sl sft-sl frm, sb pty-sb  
bkly-ireg, glos tex, v calc; MRLST: dk gy-bk,  
slt-mic gr, sl frm, brt, sb pty-sb bkly, lam ip,  
v gt tex, calc, rr bent, tr foss; fast difse, bri bl  
mod fast stimg-milky cut

CHK: lt-med gy, sl sft-sl frm, sb pty-sb  
bkly-ireg, glos tex, v calc; MRLST: dk gy-bk,  
slt-mic gr, sl frm, brt, sb pty-sb bkly, lam ip,  
v gt tex, calc, tr bent, rr pyr; fast difse, bri bl  
mod stimg cut

CHK: lt-med gy, sl sft-sl frm, sb pty-sb  
bkly-ireg, glos tex, v calc; MRLST: dk gy-bk,  
slt-mic gr, sl frm, brt, sb pty-sb bkly, lam ip,  
v gt tex, calc, bent, tr foss; fast difse, bri bl  
mod stimg cut

CHK: lt-med gy, sl sft-sl frm, sb pty  
bkly-ireg, glos tex, v calc; MRLST:  
slt-mic gr, sl frm, brt, sb pty-sb blk  
ip, v gt tex, calc, bent, tr foss; fast c  
bl mod stimg cut





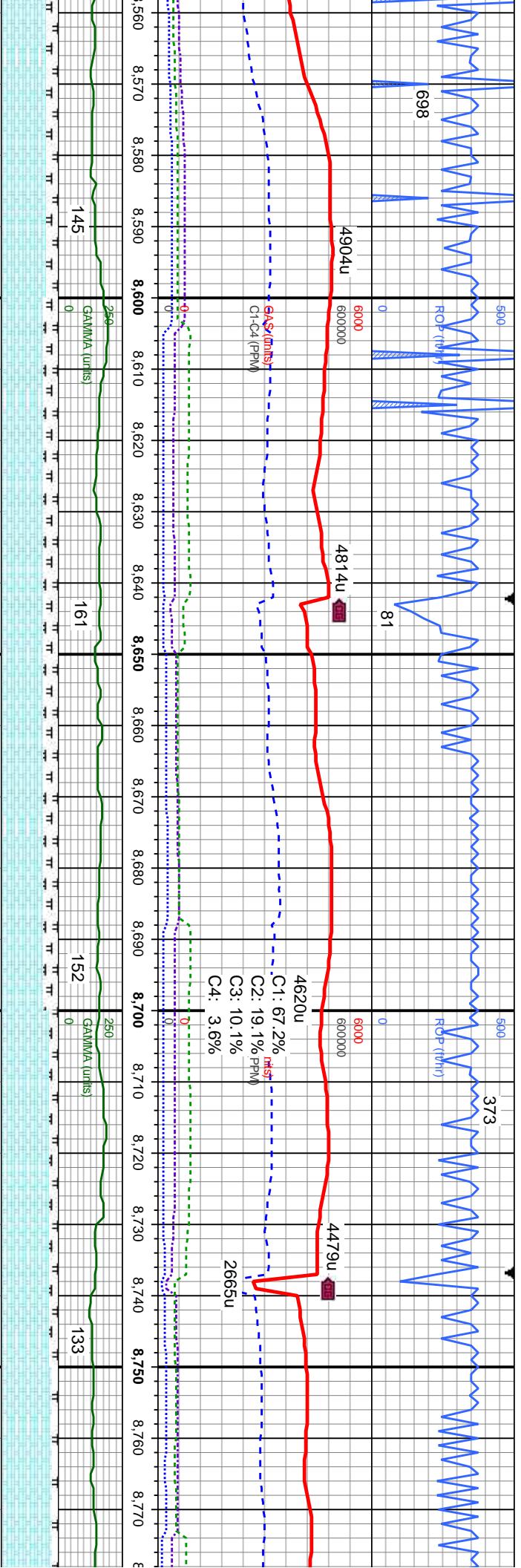
MD: 8,401'  
TVD: 7,043.85'  
Inclination: 90.3°  
Azimuth: 0.2°  
VS: 1,164.71'

MD: 8,495'  
TVD: 7,043.19'  
Inclination: 90.5°  
Azimuth: 359.9°  
VS: 1,258.57'

dk gy-blk, v-gt tex, calc, bent, tr foss, fast difse, bri mod stmg cut	CHK: lt-med gy, sl sft-sl frm, sb ply-sb blk-y-ieg, glos tex, v calc; MRLST: dk gy-blk, sft-mic gr, sl frm, brit, sb ply-sb blk-y, lam ip, v gt tex, calc, bent, tr foss, fast difse, bri bl mod fast stmg-milky cut	CHK: lt-med gy, sl sft-sl frm, sb ply-sb blk-y-ieg, glos tex, v calc; MRLST: dk gy-blk, sft-mic gr, sl frm, brit, sb ply-sb blk-y, lam ip, v gt tex, calc, bent, tr foss, fast difse, bri bl mod fast stmg-milky cut	CHK: lt-med gy, sl sft-sl frm, sb ply-sb blk-y-ieg, glos tex, v calc; MRLST: dk gy-blk, sft-mic gr, sl frm, brit, sb ply-sb blk-y, lam ip, v gt tex, calc, bent, tr foss, fast difse, bri bl mod fast stmg-milky cut
------------------------------------------------------------------------	----------------------------------------------------------------------------------------------------------------------------------------------------------------------------------------------------------------------	----------------------------------------------------------------------------------------------------------------------------------------------------------------------------------------------------------------------	----------------------------------------------------------------------------------------------------------------------------------------------------------------------------------------------------------------------





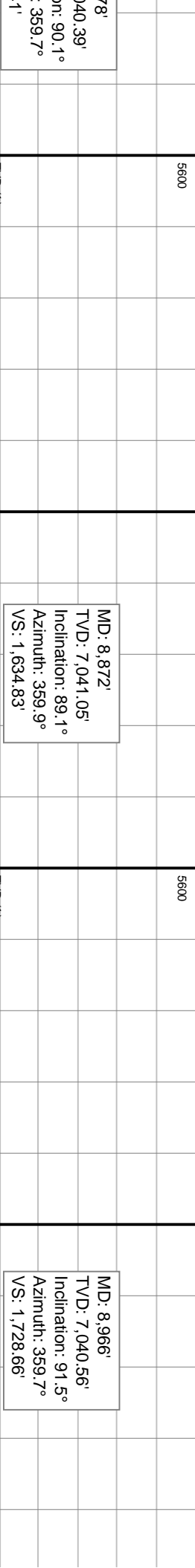
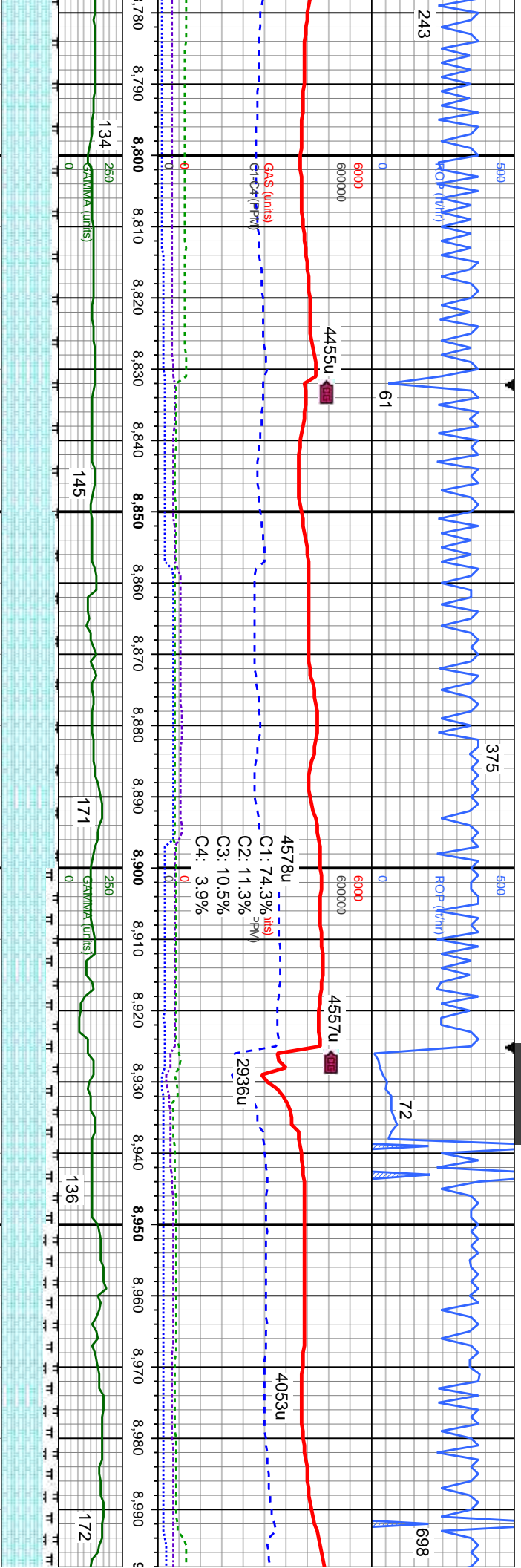


MD: 8.589'  
TVD: 7,042.2'  
Inclination: 90.7°  
Azimuth: 359.5°  
VS: 1,352.39

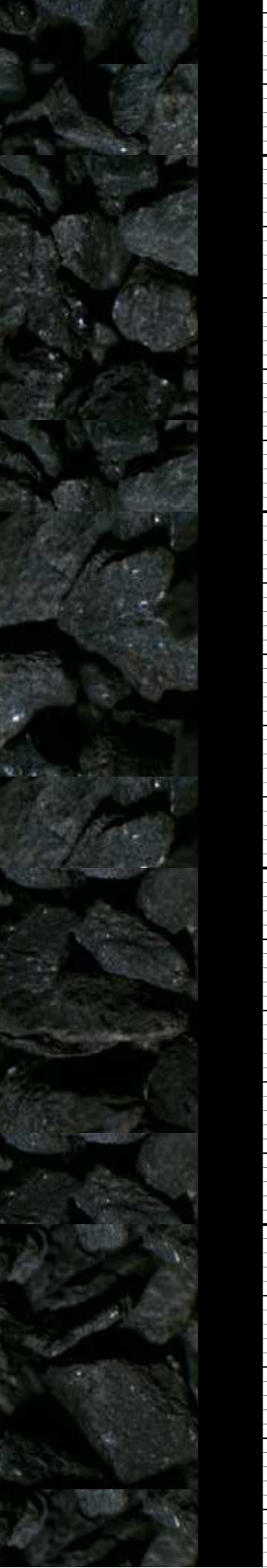
MD: 8.683'  
TVD: 7,041.06'  
Inclination: 90.7°  
Azimuth: 359.5°  
VS: 1,446.19

MD: 8.770'  
TVD: 7,041.06'  
Inclination: 90.7°  
Azimuth: 359.5°  
VS: 1,54

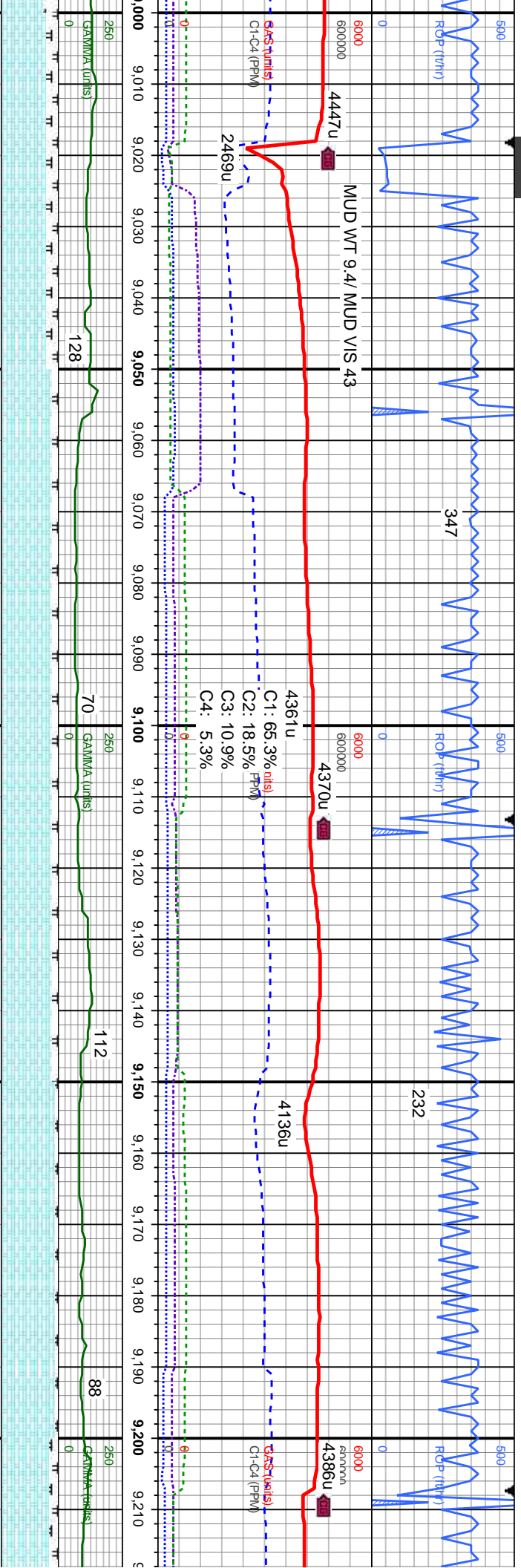
It-med gy, sl sft-sl frm, sb pty-sb bly-ireg, glos tex, v calc; MRLST: dk gy-blk, c gr, sl frm, brit, sb pty-sb bly, lam v gt tex, calc, tr bent, tr foss; fast difse, mod fast stmg-milky cut	CHK: It-med gy, sl sft-sl frm, sb pty-sb bly-ireg, glos tex, v calc; MRLST: dk gy-blk, silt-mic gr, sl frm, brit, sb pty-sb bly, lam ip, v gt tex, calc, tr bent, tr foss; fast difse, bri bl mod fast stmg-milky cut	CHK: It-med gy, sl sft-sl frm, sb pty-sb bly-ireg, glos tex, v calc; MRLST: dk gy-blk, silt-mic gr, sl frm, brit, sb pty-sb bly, lam ip, v gt tex, calc, tr bent, tr foss; fast difse, bri bl mod fast stmg-milky cut	CHK: It-med gy, sl sft-sl frm, sb pty-sb bly-ireg, glos tex, v calc; MRLST: dk gy-blk, silt-mic gr, sl frm, brit, sb pty-sb bly, lam ip, v gt tex, calc, tr bent, tr foss; fast difse, bri bl mod fast stmg-milky cut	CHK: It-med gy, sl sft-sl frm, sb pty-sb bly-ireg, glos tex, v calc; MRLST: dk gy-blk, silt-mic gr, sl frm, brit, sb pty-sb bly, lam ip, v gt tex, calc, tr bent, tr foss; fast difse, bri bl mod fast stmg-milky cut
------------------------------------------------------------------------------------------------------------------------------------------------------------------------------------------------------------	-----------------------------------------------------------------------------------------------------------------------------------------------------------------------------------------------------------------------------------	-----------------------------------------------------------------------------------------------------------------------------------------------------------------------------------------------------------------------------------	-----------------------------------------------------------------------------------------------------------------------------------------------------------------------------------------------------------------------------------	-----------------------------------------------------------------------------------------------------------------------------------------------------------------------------------------------------------------------------------



	IVD, (ft)	IVD, (ft)	IVD, (ft)
mm, sb plyt-sb MRLST: dk gy-blk, plyt-sb blk, lam ip, foss; fast difse, bri bl	CHK: lt-med gy, sl sft-sl frm, sb plyt-sb biky-ireg, glos tex, v calc; MRLST: dk gy-blk, slt-mic gr, sl frm, brit, sb plyt-sb blk, lam ip, v gt tex, calc, tr bent, tr foss; fast difse, bri bl mod fast sting-milky cut 8200	CHK: lt-med gy, sl sft-sl frm, sb plyt-sb biky-ireg, glos tex, v calc; MRLST: dk gy-blk, slt-mic gr, sl frm, brit, sb plyt-sb blk, lam ip, ip, v gt tex, calc, tr bent, tr foss; fast difse, bri bl mod fast sting-milky cut 8200	CHK: lt-med gy, sl sft-sl frm, sb plyt-sb biky-ireg, glos tex, v calc; MRLST: dk gy-blk, slt-mic gr, sl frm, brit, sb plyt-sb blk, lam ip, v gt tex, calc, tr bent, tr foss; fast difse, bri bl mod fast sting-milky cut 8200







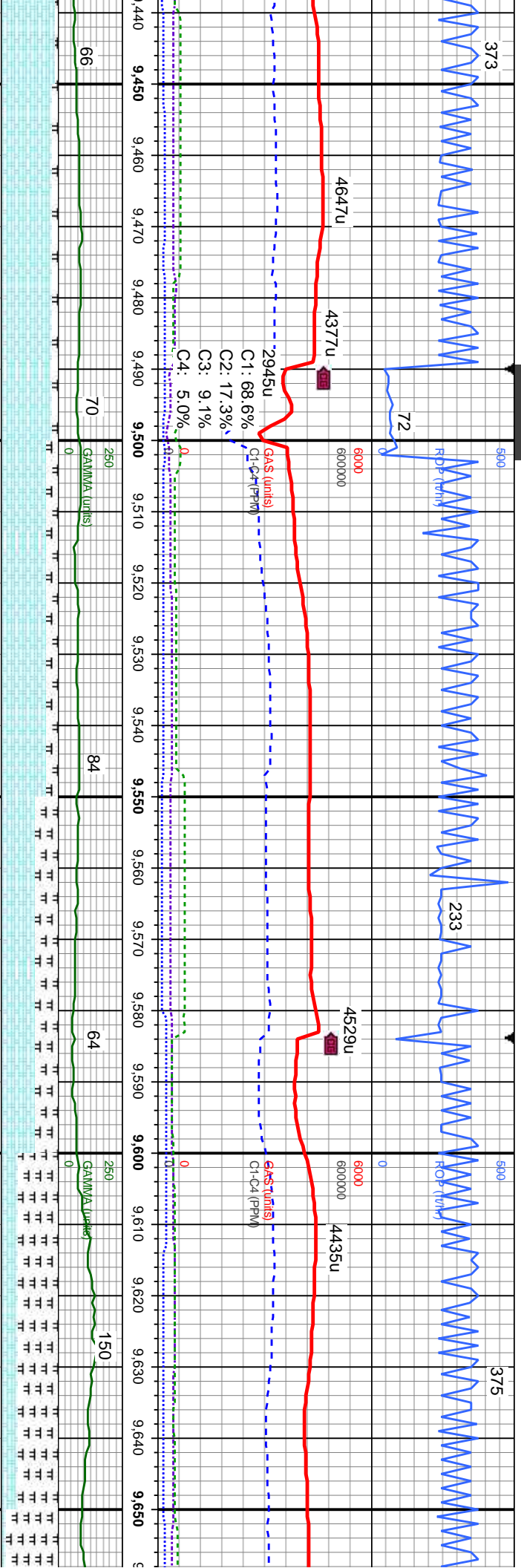
5600	5600	5600	5600
MD: 9.060' TVD: 7,038.59' Inclination: 90.9° Azimuth: 359.5° VS: 1,822.45'			
MD: 9.154' TVD: 7,037.19' Inclination: 90.8° Azimuth: 359.2° VS: 1,916.23'			

CHK: lt-med gy, sl sft-sl frm, sb pily-sb biky-ireg, glos tex, v calc; MRLST: dk gy-blk, slt-mic gr, sl frm, brit, sb pily-sb biky, lam ip, v gt tex, calc, rr bent, tr foss; fast difse, bri bl mod fast stmg-nilkly cut	CHK: lt-med gy, sl sft-sl frm, sb pily-sb biky-ireg, glos tex, v calc; MRLST: dk gy-blk, slt-mic gr, sl frm, brit, sb pily-sb biky, lam ip, v gt tex, calc, tr bent, tr foss; fast difse, bri bl mod fast stmg-nilkly cut	CHK: lt-med gy, sl sft-sl frm, sb pily-sb biky-ireg, glos tex, v calc; MRLST: dk gy-blk, slt-mic gr, sl frm, brit, sb pily-sb biky, lam ip, v gt tex, calc, rr bent, tr foss; fast difse, bri bl mod fast stmg-nilkly cut	CHK: lt-med gy, biky-ireg, glos te slt-mic gr, sl frm v gt tex, calc, rr mod fast stmg-r
8200	8200	8200	8200







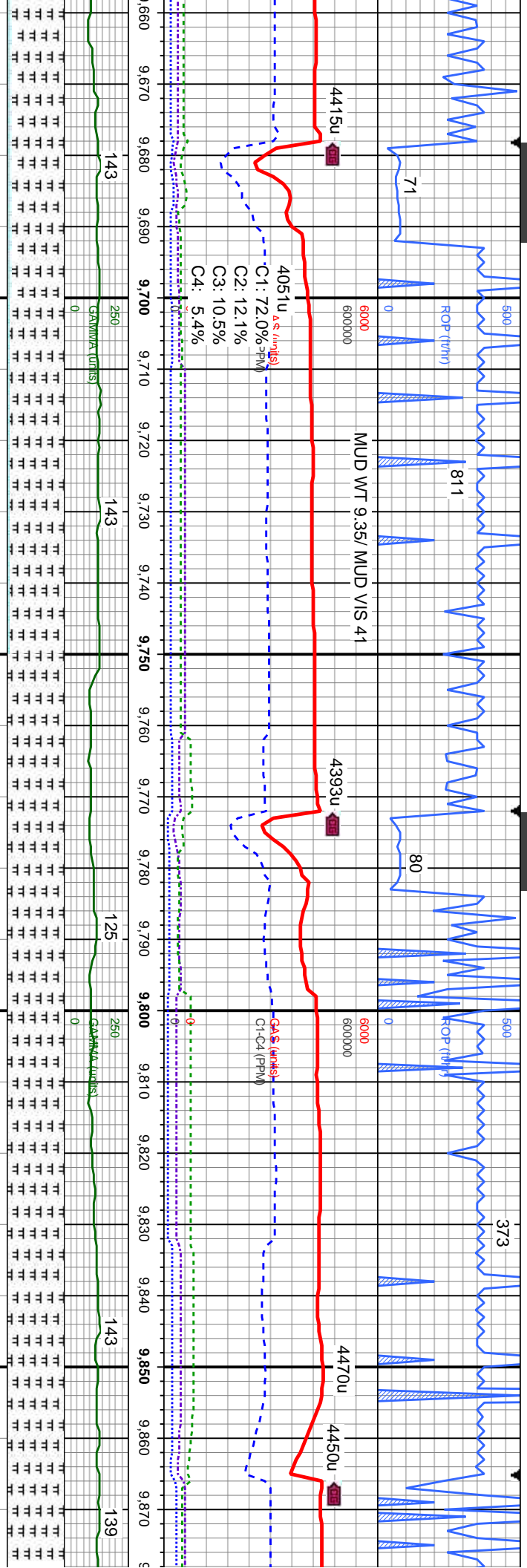


4.98'  
: 89.3°  
Azimuth: 1°  
23'

MD: 9,530'  
TVD: 7,035.64'  
Inclination: 89.9°  
Azimuth: 359.4°  
VS: 2,290.94'

MD: 9,624'  
TVD: 7,035.96'  
Inclination: 89.7°  
Azimuth: 358.7°  
VS: 2,384.7'

sb dk gy-blk, lam ip, bri mod	CHK: lt-med gy, sl sft-sl frm, sb ply-sb biky-ireg, glos tex, v calc; MRLST: dk gy-blk, slt-mic gr, sl frm, brit, sb ply-sb biky, lam ip, v gt tex, calc, rr bent; fast difse, bri bl mod fast stimg-milky cut	CHK: lt-med gy, sl sft-sl frm, sb ply-sb biky-ireg, glos tex, v calc; MRLST: dk gy-blk, slt-mic gr, sl frm, brit, sb ply-sb biky, lam ip, v gt tex, calc, rr bent; fast difse, bri bl mod fast stimg-milky cut	CHK: lt-med gy, sl sft-sl frm, biky-sb biky-ireg, glos tex, v calc; MRLST: dk gy-blk, slt-mic gr, sl frm, brit, sb ply-sb biky, lam ip, v gt tex, calc, rr bent; fast difse, bri bl mod fast stimg-milky cut	MRLST: dk gy-blk, slt-mic gr, sl frm, brit, sb ply-sb biky, lam ip, v gt tex, calc, rr bent: CHK: lt-med gy, sl sft-sl frm, biky-sb biky-ireg, glos tex, v calc; fast difse, bri bl mod stimg cut	MRLS ply-sl CHK: biky-i mod s
----------------------------------------	----------------------------------------------------------------------------------------------------------------------------------------------------------------------------------------------------------------------------	----------------------------------------------------------------------------------------------------------------------------------------------------------------------------------------------------------------------------	--------------------------------------------------------------------------------------------------------------------------------------------------------------------------------------------------------------------------	---------------------------------------------------------------------------------------------------------------------------------------------------------------------------------------------------------------	-------------------------------------------



MD: 9,718'  
TVD: 7,036.46'  
Inclination: 89.7°  
Azimuth: 359.7°  
VS: 2,478.47'

MD: 9,812'  
TVD: 7,035.88'  
Inclination: 91°  
Azimuth: 2.2°  
VS: 2,572.38'

ST: dk gy-blk, slt-mic gr, sl frm, brit, sb  
o blk, lam ip, v gt tex, calc, rr bent:  
lt-med gy, sl sft-sl frm, blk-sb  
eg, glos tex, v calc, fast difse, bri bl  
sting cut

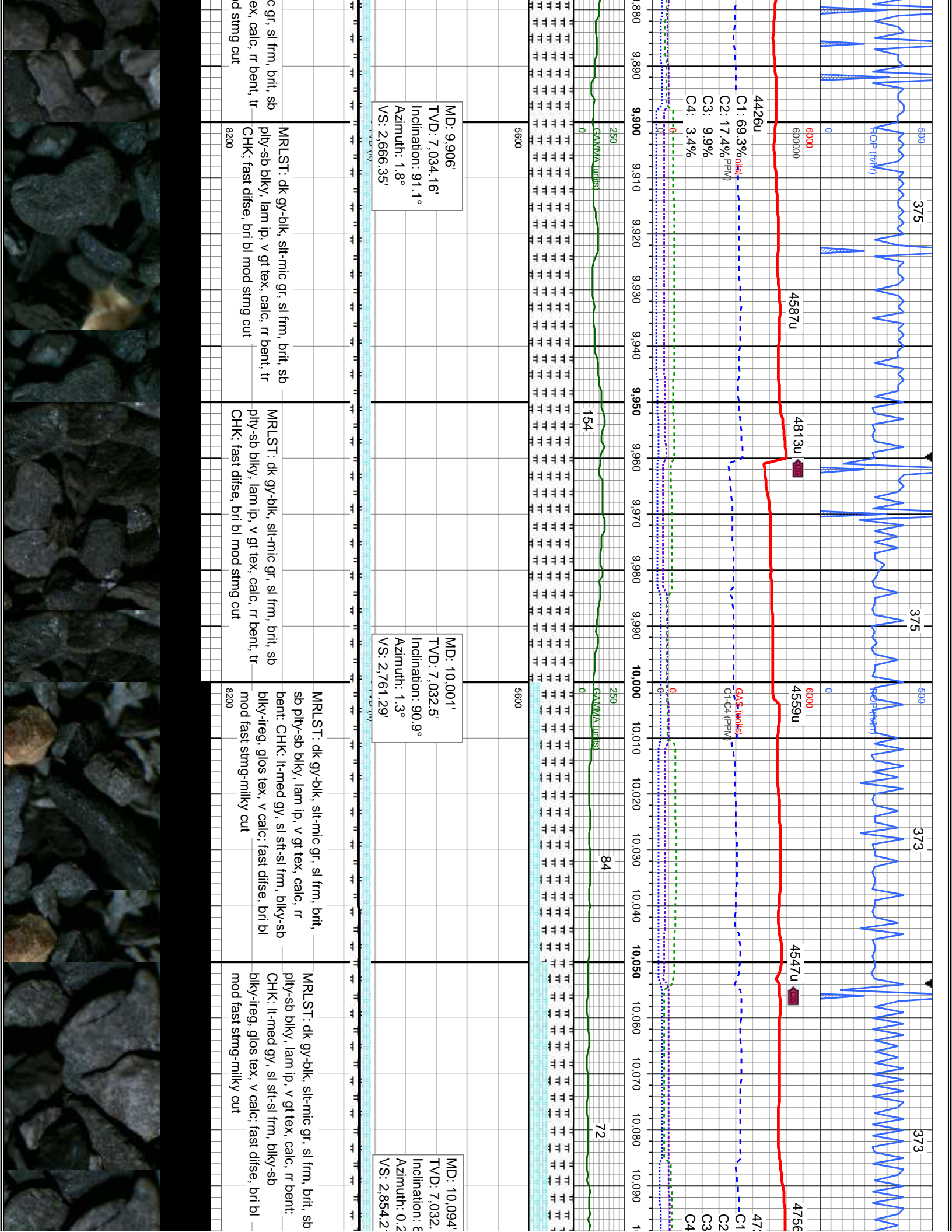
MRLST: dk gy-blk, slt-mic gr, sl frm, brit, sb  
ply-sb blk, lam ip, v gt tex, calc, rr bent,  
inoc frags: CHK: lt-med gy, sl sft-sl frm,  
blk-sb blk-ieg, glos tex, v calc, fast difse,  
bri bl mod sting cut

MRLST: dk gy-blk, slt-mic gr, sl frm, brit, sb  
sb ply-sb blk, lam ip, v gt tex, calc, rr  
bent, tr CHK: fast difse, bri bl mod sting  
cut

MRLST: dk gy-blk, slt-mi  
ply-sb blk, lam ip, v gt t  
CHK: fast difse, bri bl mc

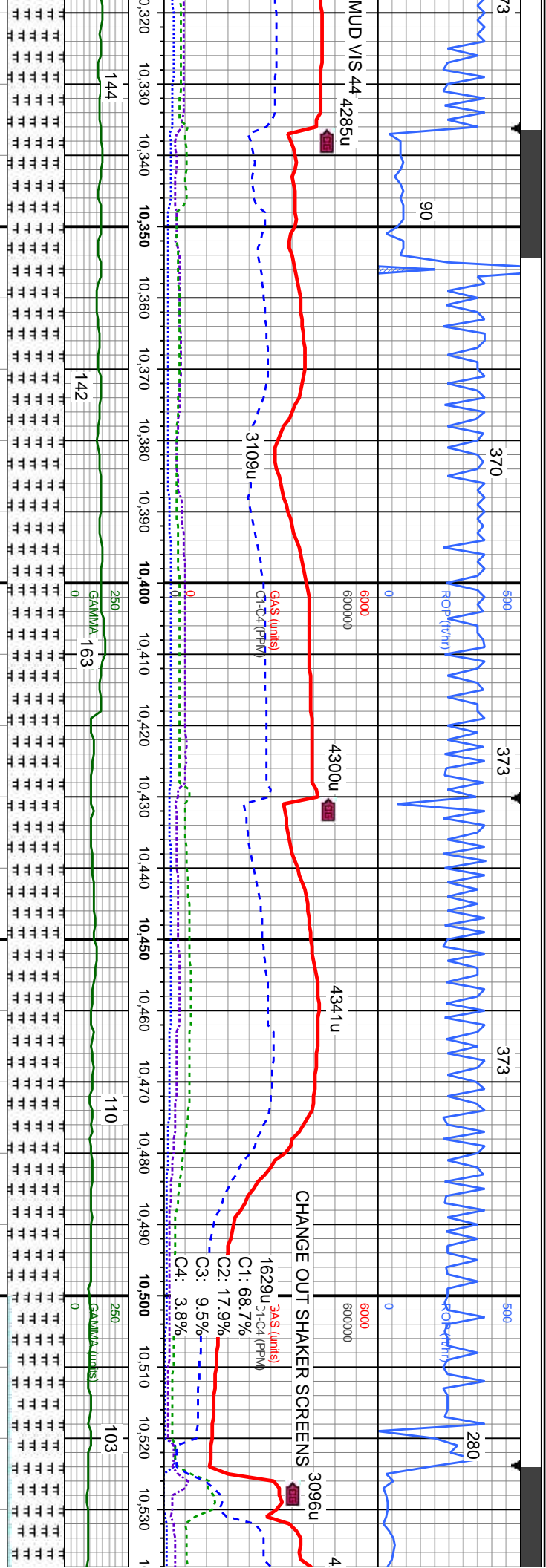










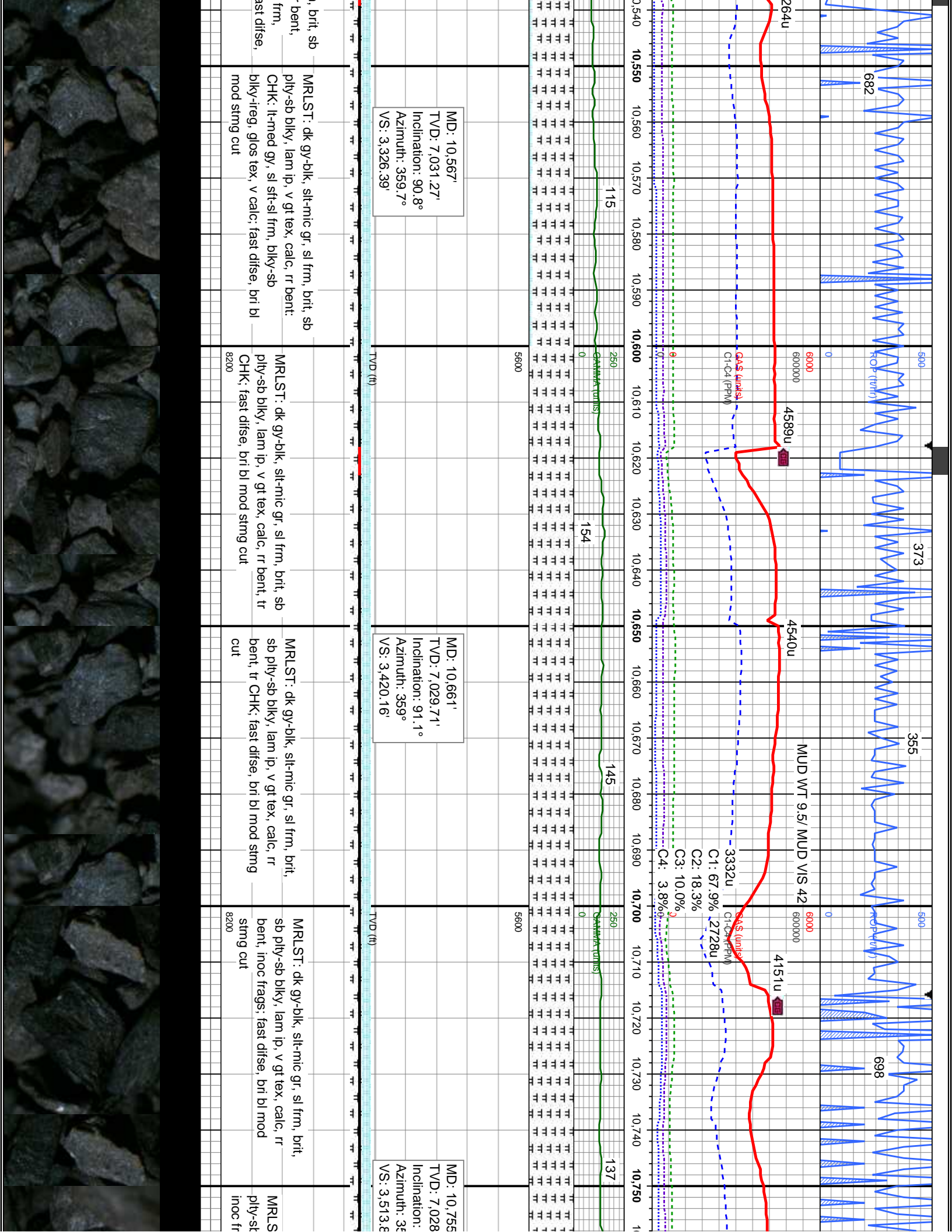


MD: 10,378'  
TVD: 7,031.44'  
Inclination: 90.2°  
Azimuth: 358.7°  
VS: 3,137.93'

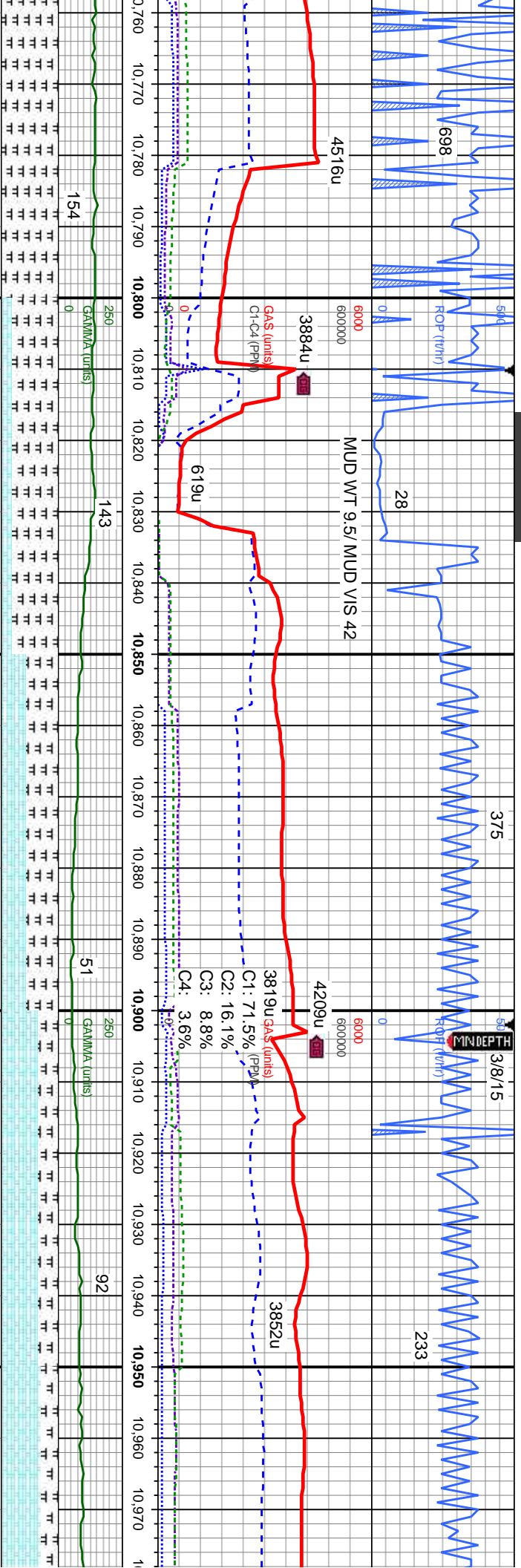
MD: 10,472'  
TVD: 7,031.6'  
Inclination: 89.6°  
Azimuth: 358.5°  
VS: 3,231.63'

blk, silt-mic gr, sl frm, brit, lam ip, v gt tex, calc, r r s; fast difse, bri bl mod	MRLST: dk gy-blk, silt-mic gr, sl frm, brit, sb ply-sb blk, lam ip, v gt tex, calc, r bent, inoc frags; fast difse, bri bl mod stng cut	MRLST: dk gy-blk, silt-mic gr, sl frm, brit, sb ply-sb blk, lam ip, v gt tex, calc, r bent; fast difse, bri bl mod stng cut	MRLST: dk gy-blk, silt-mic gr, sl frm, brit, sb ply-sb blk, lam ip, v gt tex, calc, r bent; difse, bri bl mod stng cut	MRLST: dk gy-blk, silt-mic gr, sl frm, brit, sb ply-sb blk, lam ip, v gt tex, calc, r inoc frags; CHK: lt-med gy, sl sft-sl blk, v med gy, v calc; f; bri bl mod stng cut
---------------------------------------------------------------------------------------	-----------------------------------------------------------------------------------------------------------------------------------------	-----------------------------------------------------------------------------------------------------------------------------	------------------------------------------------------------------------------------------------------------------------	---------------------------------------------------------------------------------------------------------------------------------------------------------------------------



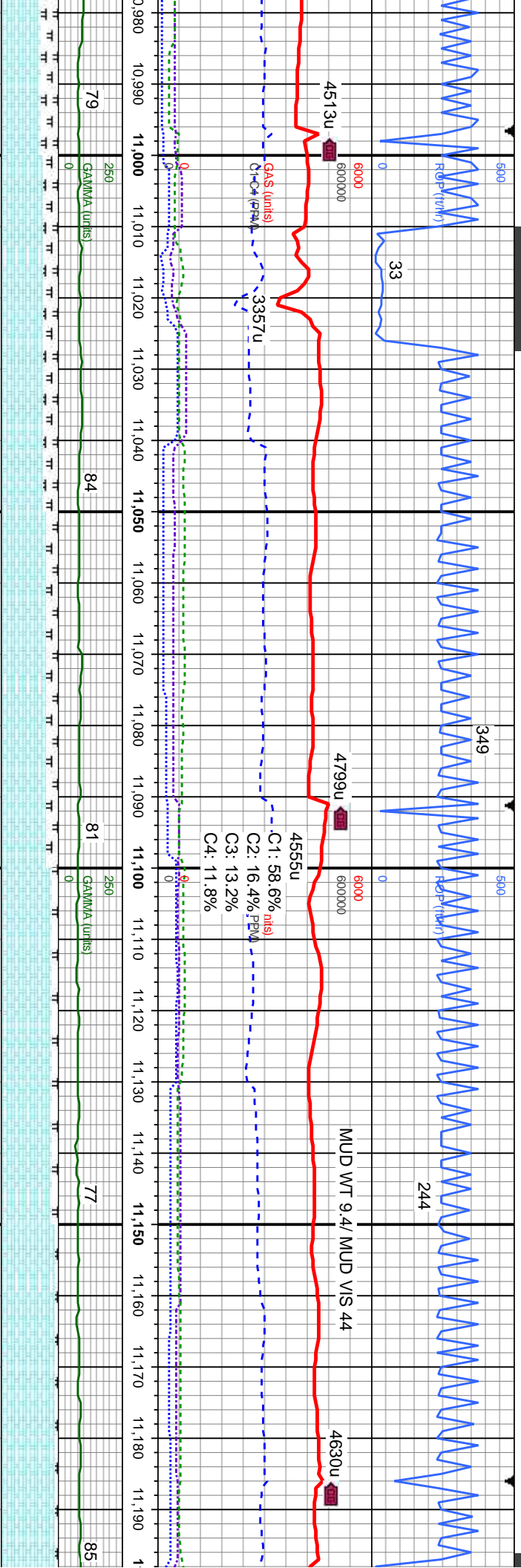






T: dk gy-blk, silt-mic gr, sl frm, brit, sb biky, lam ip, v gt tex, calc, rr bent; eggs; fast difse, bri bl mod sting cut		MRLST: dk gy-blk, silt-mic gr, sl frm, brit, sb pty-sb biky, lam ip, v gt tex, calc, rr bent: CHK: lt-med gy, sl sft-sl frm, biky-sb biky-ireg, glos tex, v calc; fast difse, bri bl mod sting cut		CHK: lt-med gy, sl sft-sl frm, biky-sb biky-ireg, glos tex, v calc; MRLST: dk gy-blk, silt-mic gr, sl frm, brit, sb pty-sb biky, lam ip, v gt tex, calc, rr bent; fast difse, bri bl mod fast sting-milky cut		CHK: lt-med gy, sl sft-sl biky-ireg, glos tex, v calc gy-blk, silt-mic gr, sl frm, biky, lam ip, v gt tex, calc difse, bri bl mod fast stm	
8200		8200		8200		8200	





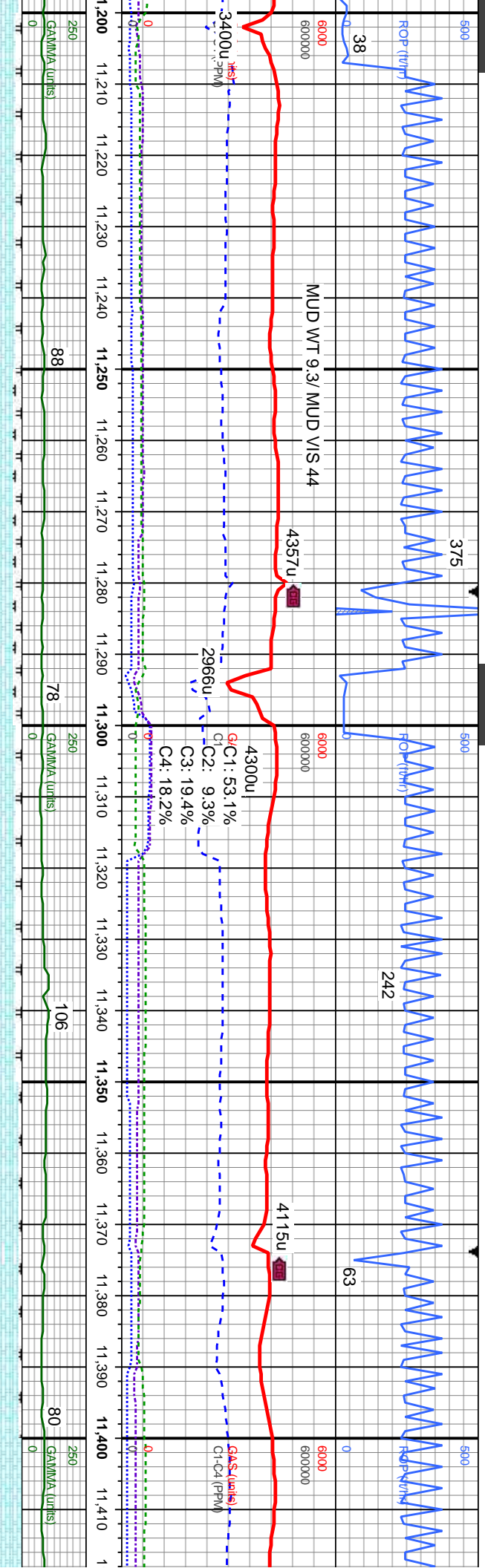
MD: 11,038'  
TVD: 7,024.45'  
Inclination: 89.9°  
Azimuth: 0.1°  
VS: 3,796.18'

MD: 11,132'  
TVD: 7,024.37'  
Inclination: 90.2°  
Azimuth: 359.9°  
VS: 3,890.03'

firm, blk-y-sb ; MRLST: dk brit, sb ply-sb g-milky cut	CHK: lt-med gy, sl sft-sl frm, blk-y-sb blk-y-ireg, glos tex, v calc; MRLST: dk gy-blk, slt-mic gr, sl frm, brit, sb ply-sb blk-y, lam ip, v gt tex, calc, tr bent; fast difse, bri bl mod fast stmg-milky cut	CHK: lt-med gy, sl sft-sl frm, blk-y-sb blk-y-ireg, glos tex, v calc; MRLST: dk gy-blk, slt-mic gr, sl frm, brit, sb ply-sb blk-y, lam ip, v gt tex, calc, tr bent; fast difse, bri bl mod fast stmg-milky cut	CHK: lt-med gy, sl sft-sl frm, blk-y-sb blk-y-ireg, glos tex, v calc; MRLST: dk gy-blk, slt-mic gr, sl frm, brit, sb ply-sb blk-y, lam ip, v gt tex, calc, tr bent; fast difse, bri bl mod fast stmg-milky cut
-----------------------------------------------------------------	----------------------------------------------------------------------------------------------------------------------------------------------------------------------------------------------------------------------------	----------------------------------------------------------------------------------------------------------------------------------------------------------------------------------------------------------------------------	----------------------------------------------------------------------------------------------------------------------------------------------------------------------------------------------------------------------------







MD: 11,227'  
TVD: 7,024.28'  
Inclination: 89.9°  
Azimuth: 359.7°  
VS: 3,984.86'

MD: 11,320'  
TVD: 7,025.1'  
Inclination: 89.1°  
Azimuth: 358°  
VS: 4,077.59'

MD: 11,414'  
TVD: 7,026.  
Inclination: 8  
Azimuth: 35  
VS: 4,171.16'

CHK: lt-med gy, sl sft-sl frm, blk-y-sb blk-y-ireg, glos tex, v calc; MRLST: dk gy-blk, slt-mic gr, sl frm, brit, sb ply-sb blk-y, lam ip, v gt tex, calc, rr bent; fast difse, bri bl mod fast stmg-milky cut	CHK: lt-med gy, sl sft-sl frm, blk-y-sb blk-y-ireg, glos tex, v calc; MRLST: dk gy-blk, slt-mic gr, sl frm, brit, sb ply-sb blk-y, lam ip, v gt tex, calc, rr bent; fast difse, bri bl mod fast stmg-milky cut	CHK: lt-med gy, sl sft-sl frm, blk-y-sb blk-y-ireg, glos tex, v calc; MRLST: dk gy-blk, slt-mic gr, sl frm, brit, sb ply-sb blk-y, lam ip, v gt tex, calc, rr bent; fast difse, bri bl mod fast stmg-milky cut	CHK: lt-med gy, sl sft-sl frm, blk-y-sb blk-y-ireg, glos tex, v calc; MRLST: dk gy-blk, slt-mic gr, sl frm, brit, sb ply-sb blk-y, lam ip, v gt tex, calc, rr bent; fast difse, bri bl mod fast stmg-milky cut	CHK: lt-med blk-y-ireg, glos fast difse, br
8200	8200	8200	8200	8200



