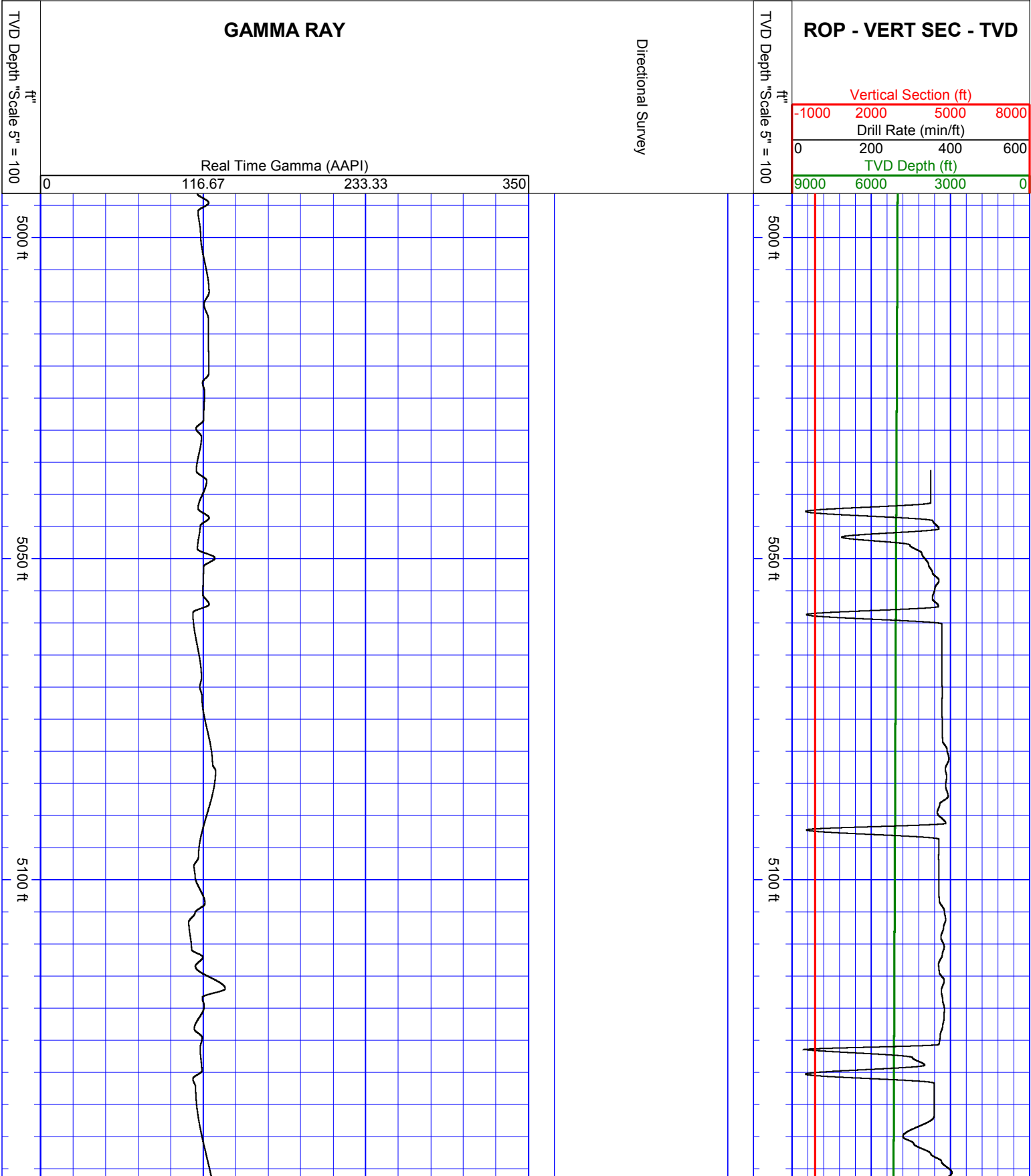
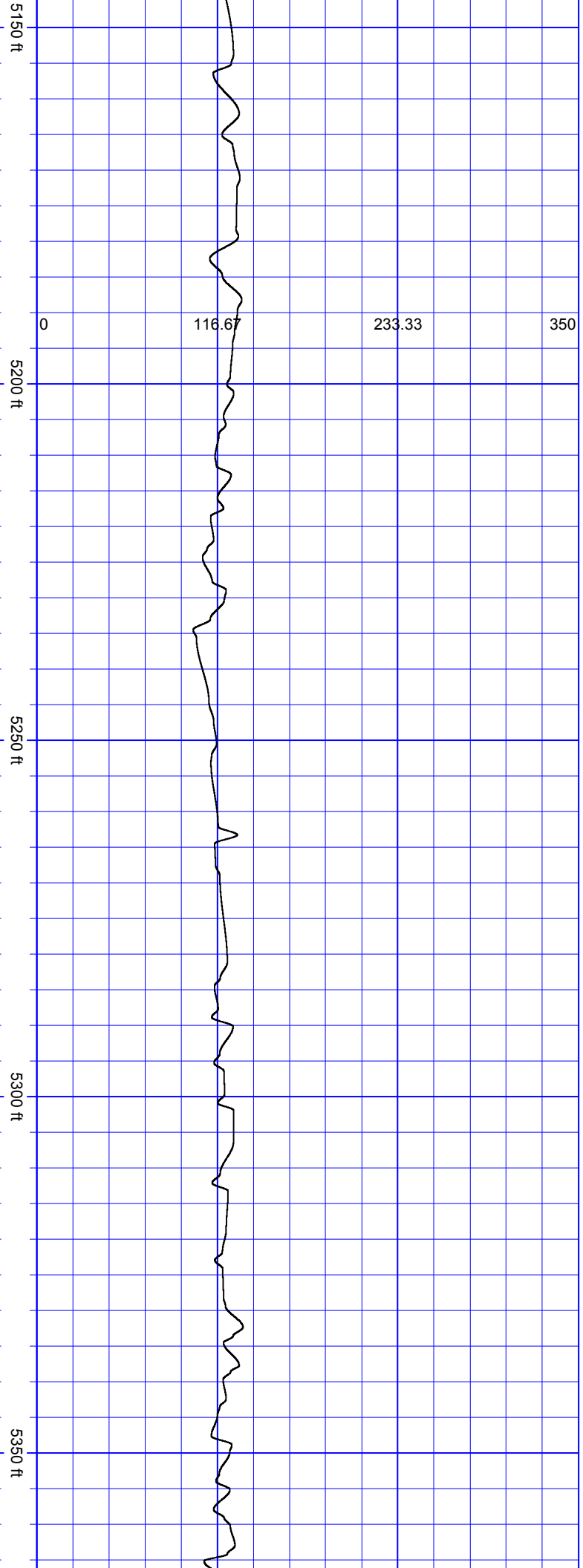
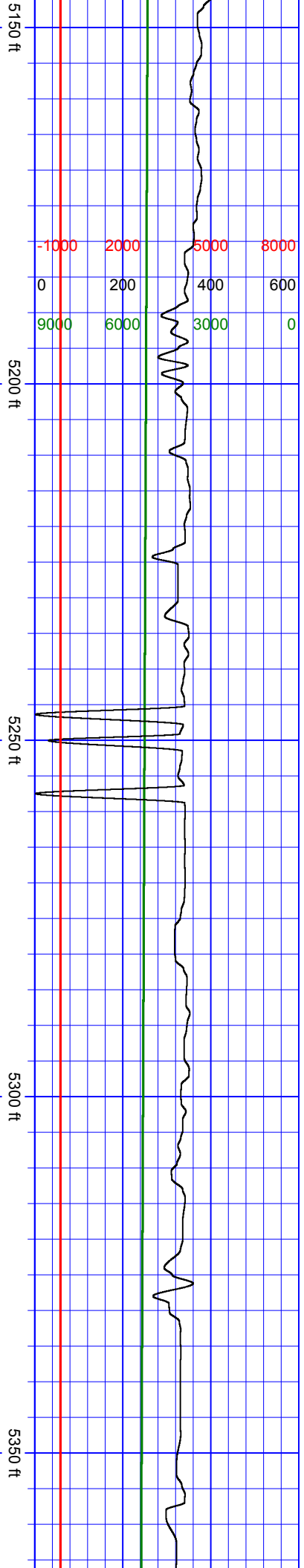


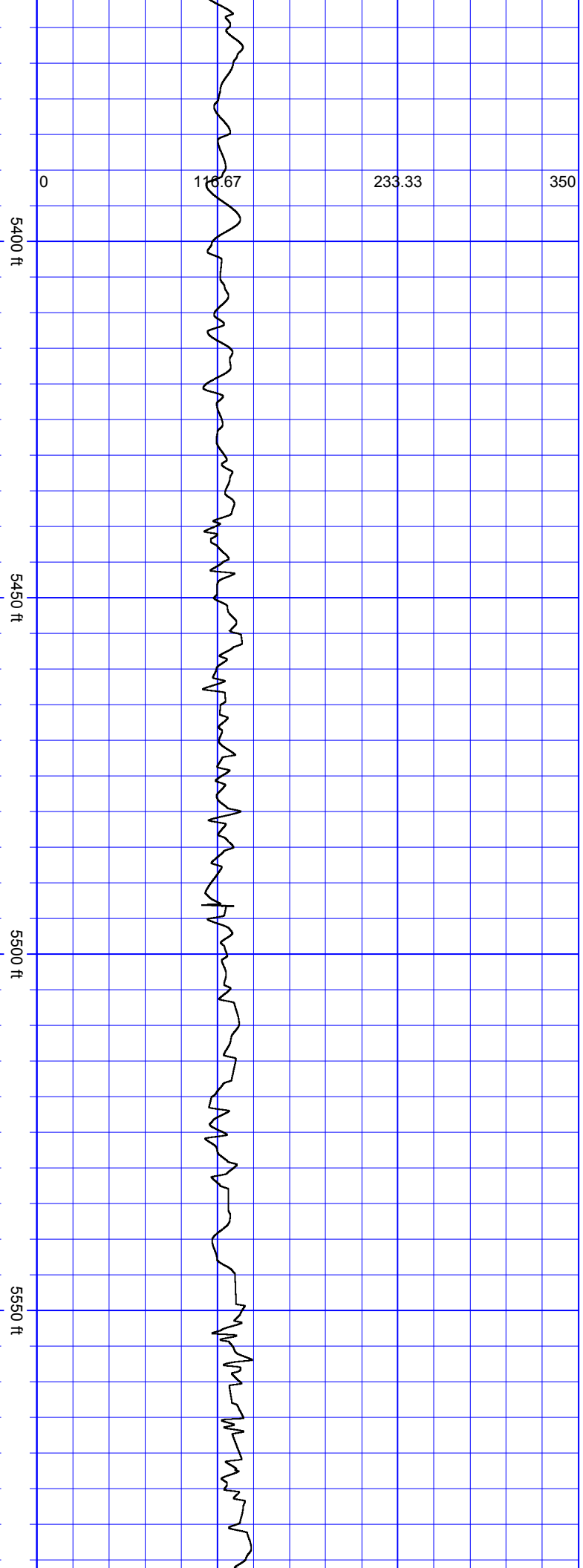
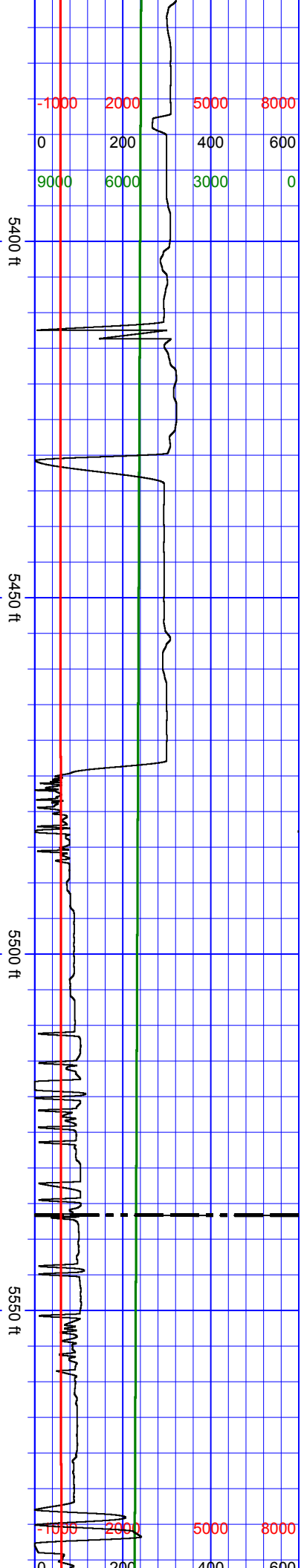


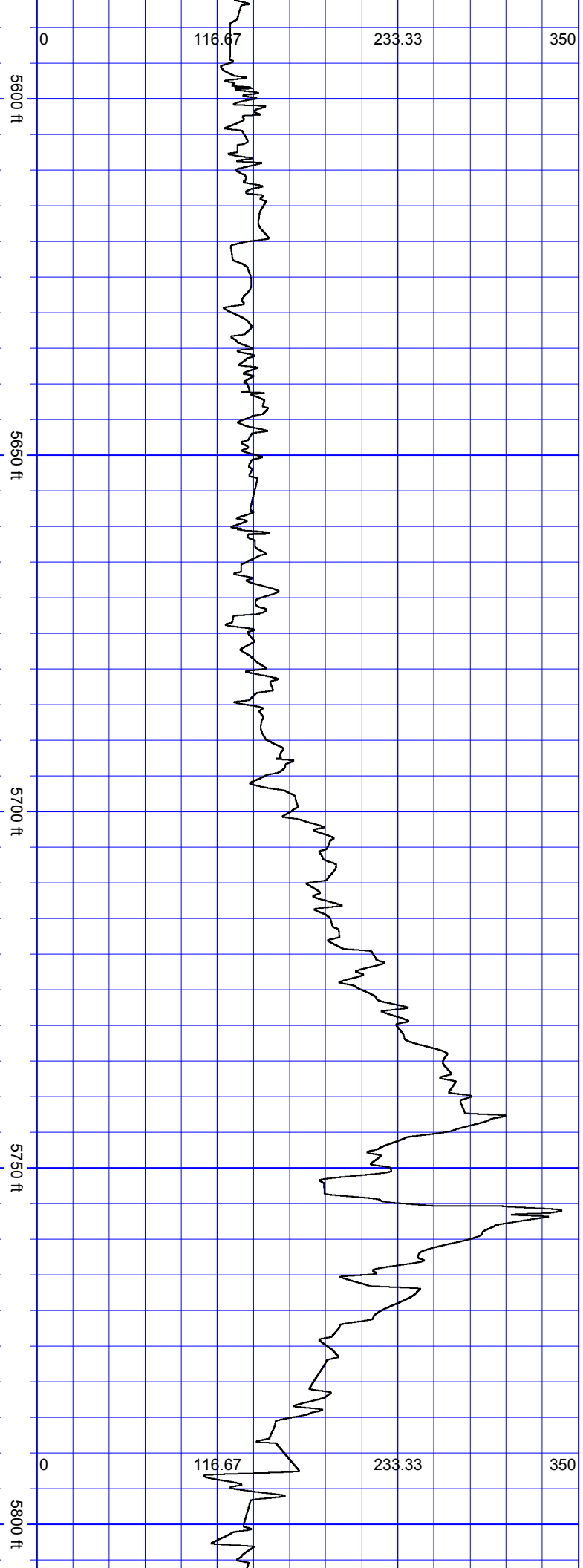
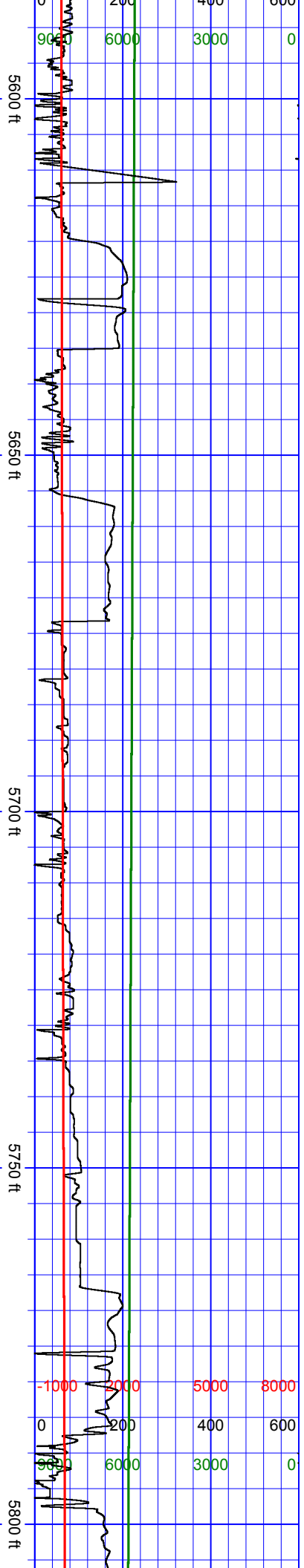
Oil Company: Whiting Petroleum
Well Name: Razor 12F-1304B
Surface Location: S12-T10N-R58W
Bit Run: 4
Log Depth Start: 4993.07 ft Log Depth End: 6125.64 ft
Data Depth Start: 4993.07 ft Data Depth End: 6125.64 ft

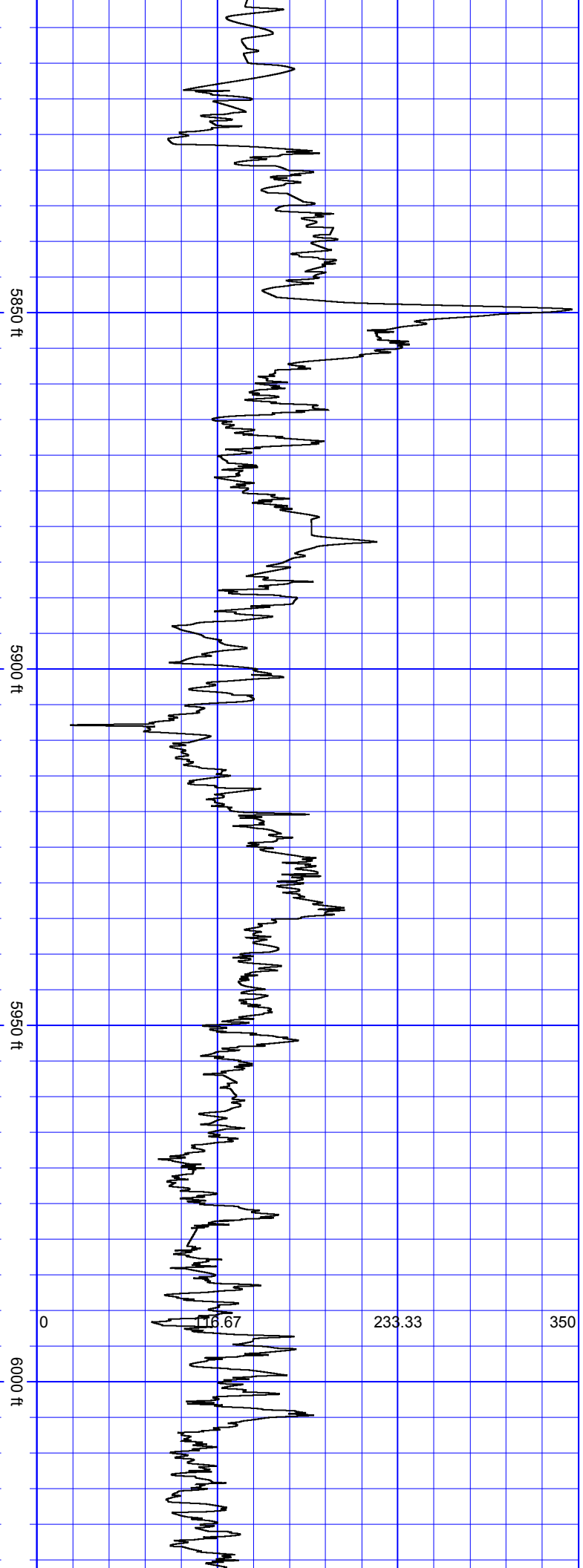
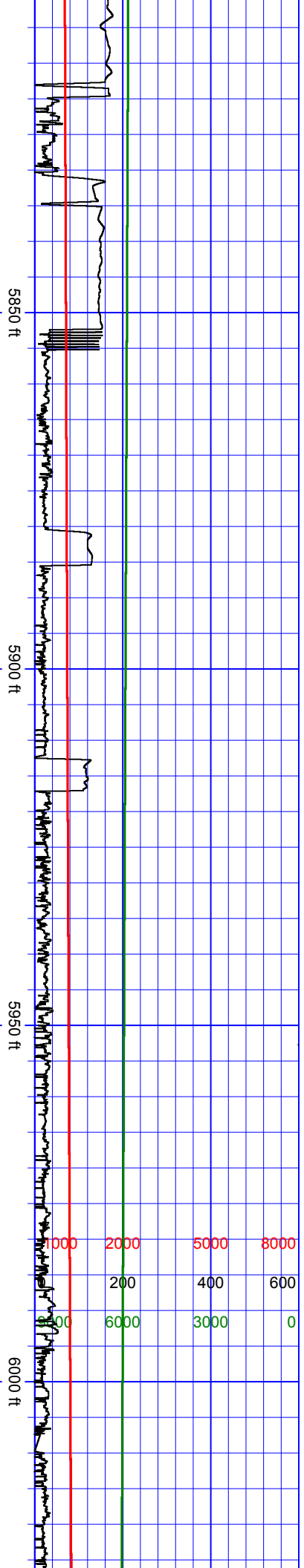
Interpretations of this data by Cathedral Energy Services will be of best judgment as to correctness. Cathedral Energy Services cannot and does not guarantee the accuracy or correctness of interpretations or any surveys derived therefrom. Cathedral Energy Services makes no warranties of performance, results, fitness or suitability for any particular purposes with respect to the goods being furnished under the terms and conditions. Cathedral Energy Services warrants that the equipment furnished will conform to Cathedral Energy Services published specifications in effect at the time and be in good working order.

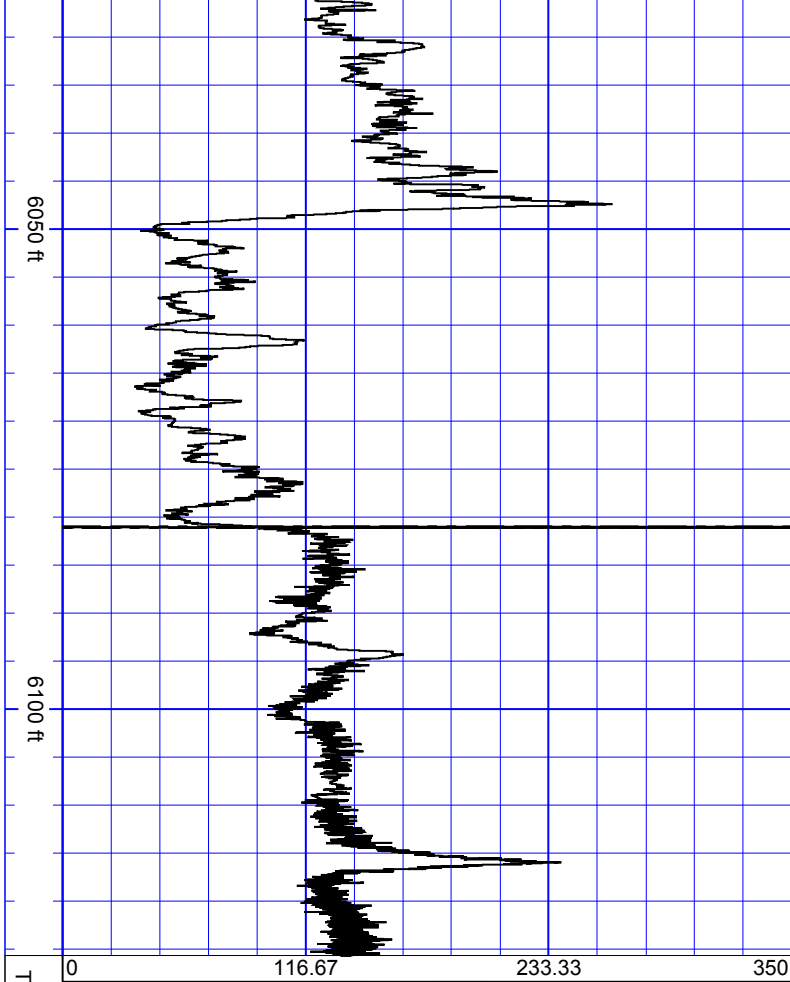






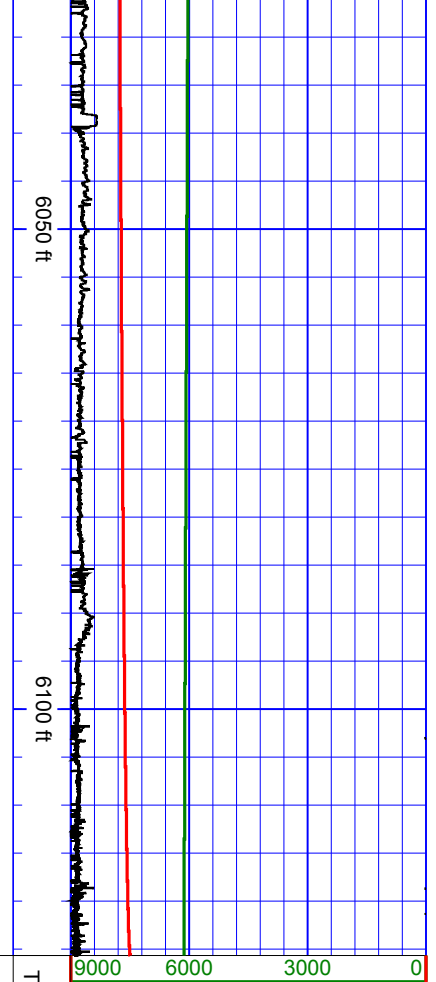






GAMMA RAY

Directional Survey



ROP - VERT SEC - TVD



Oil Company: Whiting Petroleum
 Well Name: Razor 12F-1304B
 Surface Location: S12-T10N-R58W
 Bit Run: 4
 Log Depth Start: 4993.07 ft Log Depth End: 6125.64 ft
 Data Depth Start: 4993.07 ft Data Depth End: 6125.64 ft