



**Hamilton Creek Federal 1-22-44-15 P&A**  
**Hamilton Creek Field, San Miguel County, Colorado**  
**NE NW Section 1-T44N-R15W**  
**API # 05-113-06234**  
**6/24/2015**

**Proposed Procedure**

1. Set two frac tanks. Fill one with 500 bbls of produced water. Fill the other with 300 bbls of fresh water for cement work.
2. RU workover rig and rig pump.
3. ND tree and NU BOPE. Unload L-80 workstring.
4. RU cementing services and RIH w/ tubing. Spot plug #1 from 1500' – 1700' using 20 sx Type III cement (14.6 ppg, 1.37 cu ft yield)
5. PU and wait on cement for 2 hrs. RIH and tag top of cement. Spot another plug if the balanced plug has dropped.
6. PU and spot plug #2 from 1100' – 1300' using 20 sx Type III cement (14.6 ppg, 1.37 cu ft yield)
7. PU and wait on cement for 2 hrs. RIH and tag top of cement.
8. TOOH & LD any tbg stood back in the derrick.
9. Pump the top 300' plug #3 from 300' to surface using 30 sx Type III cement (14.6 ppg, 1.37 cu ft yield). Fill all annuluses with cement to surface. RD cementing services.
10. ND BOPE. Cut off wellhead 3' below ground level. Weld on a cap showing the P&A date, well name, API # and legal coordinates. RD workover rig.
11. Fill cellar, move wellhead equipment and work string to yard.

# WELLBORE DIAGRAM

Surface Loc: 749' FNL & 1923' FWL

Operator:	CCI Paradox Upstream LLC
Well Name:	HC Fed 1-22-44-15
Lease Number:	COC 56709
Location:	NENW Sec 1-T44N- R15W 6th PM
Field:	Hamilton Creek
County:	San Miguel
API Number:	05-113-06234-00
Diagram Date:	6/24/2015

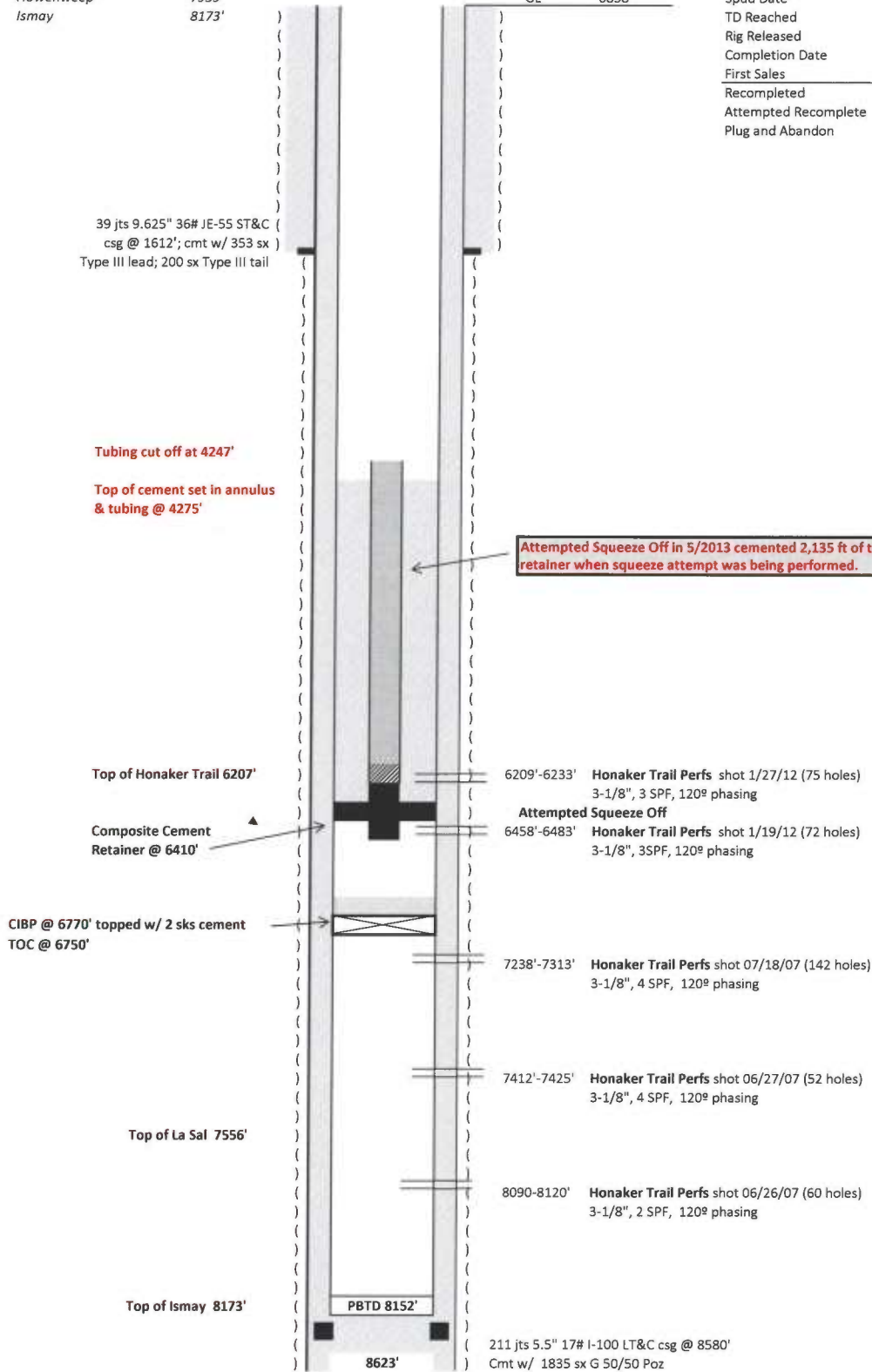
## FORMATIONS

Chinle	1240'
Honaker Trail	6207'
Honaker Trail HSST	7159'
La Sal	7556'
Howenweep	7959'
Ismay	8173'

KB 6854'  
GL 6838'

## Well History

Spud Date	6/2/2007
TD Reached	6/15/2007
Rig Released	6/17/2007
Completion Date	7/25/2007
First Sales	7/8/2007
Recompleted	2/26/2012
Attempted Recomplete	5/17/2013
Plug and Abandon	TBD



# WELLBORE DIAGRAM

## Proposed Plug and Abandon of Wellbore

Surface Loc: 749' FNL & 1923' FWL

Operator:	CCI Paradox Upstream LLC
Well Name:	HC Fed 1-22-44-15
Lease Number:	COC 56709
Location:	NENW Sec 1-T44N- R15W 6th PM
Field:	Hamilton Creek
County:	San Miguel
API Number:	05-113-06234-00
Diagram Date:	6/24/2015

FORMATIONS	
Chinle	1240'
Honaker Trail	6207'
Honaker Trail HSST	7159'
La Sal	7556'
Howenweep	7959'
Ismay	8173'

39 jts 9.625" 36# JE-55 ST&C  
csg @ 1612'; cmt w/ 353 sx  
Type III lead; 200 sx Type III tail

Tubing cut off at 4247'

Top of cement set in annulus  
& tubing @ 4275'

Top of Honaker Trail 6207'

Composite Cement  
Retainer @ 6410'

CIBP @ 6770' topped w/ 2 sks cement  
TOC @ 6750'

Top of La Sal 7556'

Top of Ismay 8173'

KB 6854'

GL 6838'

### Well History

Spud Date	6/2/2007
TD Reached	6/15/2007
Rig Released	6/17/2007
Completion Date	7/25/2007
First Sales	7/8/2007
Recompleted	2/26/2012
Attempted Recomplete	5/17/2013
Plug and Abandon	TBD

**Plug #3 Surface Plug**  
300' to surface, all annuluses filled  
30 sacks of Type III cement, 14.6 ppg, 1.37 cu ft / sack yield

**Plug #2 Across Chinle formation**  
Balanced Plug Tagged 1100 - 1300'  
20 sacks of Type III cement, 14.6 ppg, 1.37 cu ft / sack yield

**Plug #1 Set across Surface Csg Depth**  
Balanced Plug Tagged 1500 - 1700'  
20 sacks of Type III cement, 14.6 ppg, 1.37 cu ft / sack yield

Attempted Squeeze Off in 5/2013 cemented 2,135 ft of tbg in place. Tbg was not stung into retainer when squeeze attempt was being performed.

6209'-6233' Honaker Trail Perfs shot 1/27/12 (75 holes)  
3-1/8", 3 SPF, 120° phasing

Attempted Squeeze Off  
6458'-6483' Honaker Trail Perfs shot 1/19/12 (72 holes)  
3-1/8", 3SPF, 120° phasing

7238'-7313' Honaker Trail Perfs shot 07/18/07 (142 holes)  
3-1/8", 4 SPF, 120° phasing

7412'-7425' Honaker Trail Perfs shot 06/27/07 (52 holes)  
3-1/8", 4 SPF, 120° phasing

8090-8120' Honaker Trail Perfs shot 06/26/07 (60 holes)  
3-1/8", 2 SPF, 120° phasing

PBTD 8152'

211 jts 5.5" 17# I-100 LT&C csg @ 8580'  
Cmt w/ 1835 sx G 50/50 Poz

8623'