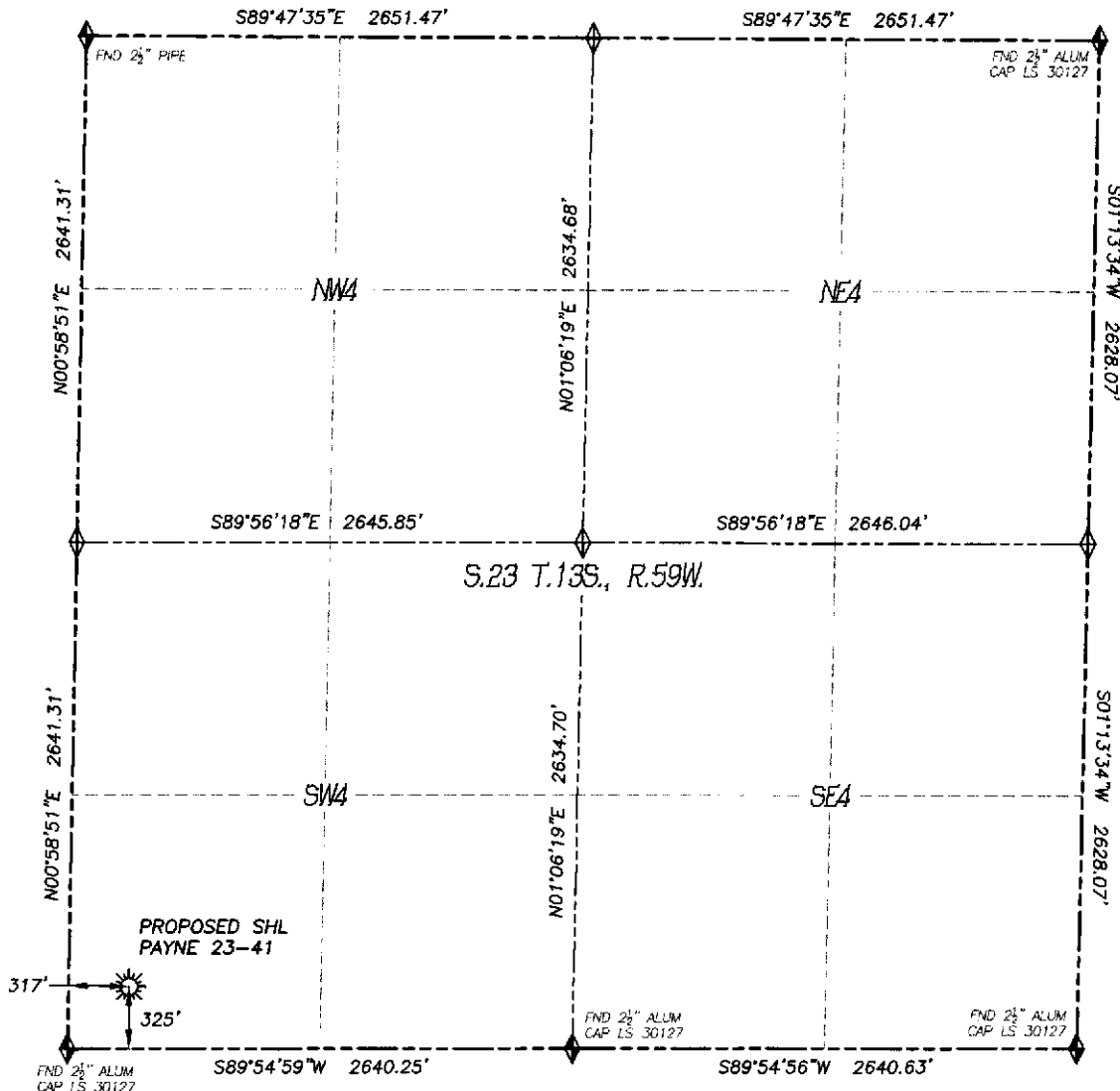


WELL LOCATION CERTIFICATE

PAYNE 23-41

SECTION: 23
TOWNSHIP: 13S
RANGE: 59W



0 500 1000
SCALE: 1" = 1000'

LEGEND

- ◆ FOUND MONUMENT AS DESCRIBED
- ☀ PROPOSED WELL
- EXISTING WELL
- BOTTOM HOLE
- ⊗ ABANDONED WELL
- ◆ CALCULATED POSITION

IN ACCORDANCE WITH A REQUEST FROM MUSTANG CREEK OPERATING, LLC., DALEY LAND SURVEYING, INC. HAS DETERMINED THE SURFACE LOCATION OF THE PAYNE 23-41 WELL TO BE 325' FSL, 317' FWL, AS MEASURED AT NINETY (90) DEGREES FROM THE SECTION LINES OF SECTION 23, TOWNSHIP 13 SOUTH, RANGE 59 WEST, OF THE 6TH PRINCIPAL MERIDIAN, ELBERT COUNTY, COLORADO.

I HEREBY STATE THAT THIS WELL LOCATION CERTIFICATE WAS PREPARED BY ME OR UNDER MY DIRECT SUPERVISION, THAT THE WORK WAS COMPLETED ON 5/21/2015 FOR AND ON BEHALF OF MUSTANG CREEK OPERATING, LLC., AND THAT THIS MAP DOES NOT REPRESENT A BOUNDARY SURVEY, IT IS NOT A LAND SURVEY PLAT OR AN IMPROVEMENT SURVEY PLAT AND IT IS NOT TO BE RELIED UPON FOR THE ESTABLISHMENT OF FENCE, BUILDING OR OTHER FUTURE IMPROVEMENT LINES.

NOTES:

- 1) BEARINGS FOR THIS MAP ARE ASSUMED AND BASED UPON GPS OBSERVATIONS MADE BETWEEN MONUMENTS LOCATED AT THE SOUTHWEST CORNER AND SOUTH QUARTER CORNER OF SECTION 23, T.13S., R.59W.
- 2) HORIZONTAL DATUM IS NAD83.
- 3) VERTICAL DATUM IS NAVD88 AND ORIGINATES FROM THE LOCAL C.O.R.S. NETWORK, UTILIZING THE GEOD12A MODEL.
- 4) SEE LOCATION DRAWING FOR VISIBLE IMPROVEMENTS WITHIN 500' OF PROPOSED DISTURBED AREA.
- 5) SURFACE USE: PASTURE.
- 6) INST. OPERATOR: SCOTT ESTABROOKS.

NEAREST CULTURAL ITEMS:

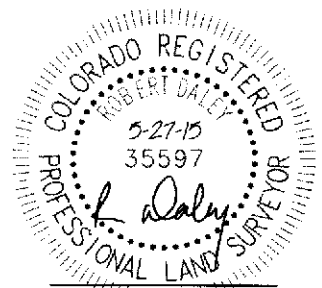
- | | |
|--------------------------------|-----------|
| 1) BUILDING: | 2910'± SW |
| 2) BUILDING UNIT (ABND): | 3015'± SW |
| 3) HIGH OCC. BLD. UNIT: | 5280'± |
| 4) DES. OUTSIDE ACTIVITY AREA: | 5280'± |
| 5) PUBLIC ROAD: | 302'± W |
| 6) ABOVE GROUND UTILITY: | 4943'± E |
| 7) RAILROAD: | 5280'± |
| 8) PROPERTY LINE: | 317'± W |

NAD 83

SURFACE LOCATION:
LATITUDE: N38.89858°
LONGITUDE: W103.97882°
ELEV: 5810'
PDOP: 1.3
QTR/QTR: SW4/SW4

NAD27

SURFACE LOCATION:
LATITUDE: N38.89858°
LONGITUDE: W103.97831°



FOR AND ON BEHALF OF
DALEY LAND SURVEYING INC.,
Robert Daley, PLS 35597

SHEET 1 OF 1

Drawing Date: 5/27/15