

Project: Weld County, CO (NAD 83)
 Site: Sec. 17-T5N-R63W (70 Ranch State BB18 PAD)
 Well: 70 Ranch State BB18-611
 Wellbore: Plan C ST1
 Design: Rev C1 ST1 PROPOSAL



Azimuths to Grid North
 True North: -0.68°
 Magnetic North: 7.71°
 Magnetic Field
 Strength: 52665.7snT
 Dip Angle: 67.02°
 Date: 6/24/2015
 Model: BGGM2015



WELL DETAILS: 70 Ranch State BB18-611

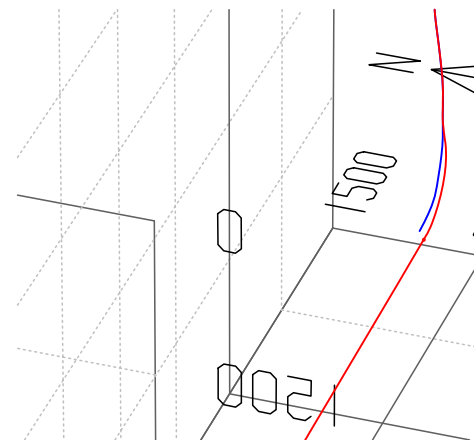
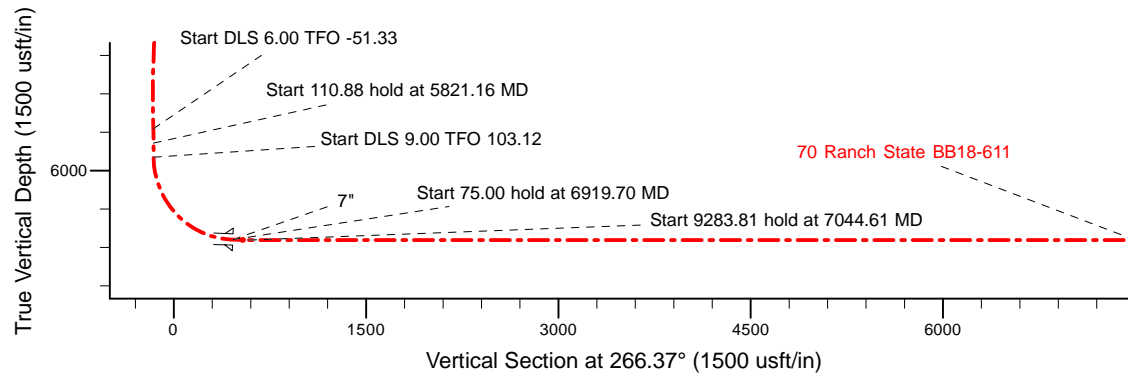
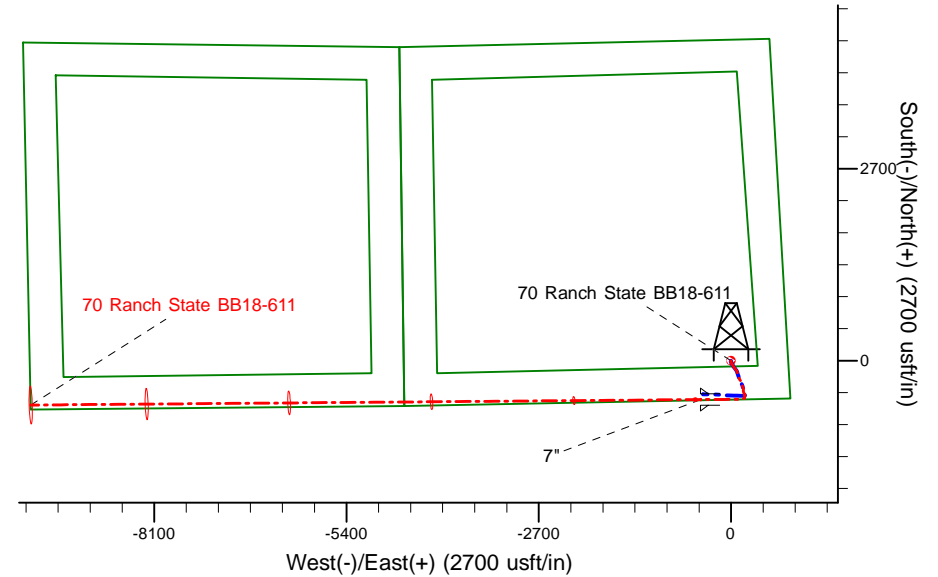
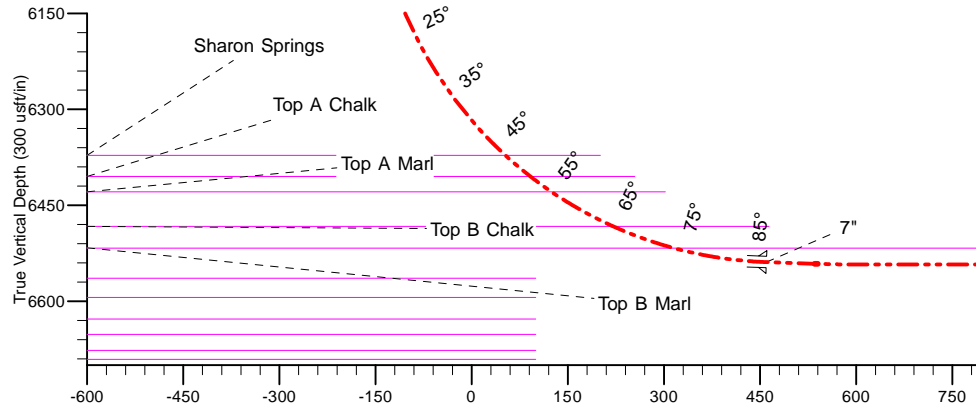
| +N/-S | +E/-W | Northing | Ground Level: | 4645.00 | Latitude | Longitude | Slot |
|-------|-------|------------|---------------|------------|-----------|-------------|------|
| 0.00 | 0.00 | 1387930.22 | Easting | 3291445.85 | 40.393550 | -104.453630 | |

SECTION DETAILS

| Sec | MD | Inc | Azi | TVD | +N/-S | +E/-W | Dleg | TFace | Vsect | Target |
|-----|----------|-------|--------|---------|---------|----------|------|--------|---------|------------------------------------|
| 1 | 5708.00 | 1.75 | 221.55 | 5672.03 | -493.50 | 191.92 | 0.00 | 0.00 | -160.28 | |
| 2 | 5821.16 | 8.00 | 180.00 | 5784.75 | -502.68 | 190.77 | 6.00 | -51.33 | -158.55 | |
| 3 | 5932.04 | 8.00 | 180.00 | 5894.55 | -518.11 | 190.77 | 0.00 | 0.00 | -157.57 | |
| 4 | 6275.25 | 30.00 | 269.53 | 6221.05 | -543.31 | 102.83 | 9.00 | 103.12 | -68.21 | 70 Ranch State BB18-611_Rev C1_BHL |
| 5 | 6919.70 | 88.00 | 269.53 | 6538.97 | -547.61 | -426.26 | 9.00 | 0.00 | 460.09 | |
| 6 | 6994.70 | 88.00 | 269.53 | 6541.59 | -548.22 | -501.21 | 0.00 | 0.00 | 534.93 | |
| 7 | 7044.61 | 90.00 | 269.53 | 6542.46 | -548.63 | -551.12 | 4.00 | 0.00 | 584.76 | |
| 8 | 16328.42 | 90.00 | 269.53 | 6543.00 | -624.15 | -9834.62 | 0.00 | 0.00 | 9854.41 | 70 Ranch State BB18-611_Rev C1_BHL |

Footage Calls

Platted SHL: 547 FSL, 800' FEL
 ~ 7" Casing: 12' FSL, 1246' FEL
 Platted BHL: 65' FSL, 1' FWL



| |
|--|
| 70 Ranch State BB18-611 |
| North American Datum 1983 Colorado Northern Zone Grid |
| Northing: 1387930.22 Easting: 3291445.85 Lat: 40.393550 Long: -104.453630 KB = 24' @ 4669.00usft (H&P 343) |
| Created By: Tatiana Gomez Date: 6/25/15 |