



Well: Fee 106X  
(3324)  
Field: Rangley, Co.

### Survey Data

#### Run No.10

Survey Type: T-S-T Surface Temp: 83.3 °F  
Date: 04/08/2015 BHT: 124.5 °F  
Metered Rate: 1562 mcf/d TBG Pressure: 1703 PSI  
Measured Rate: 599 B/D CSG Pressure: 0 PSI  
Desired Rate: N/A Pick Up: 5960' TDL  
Service Co: PLS Inj. Fluid: CO<sub>2</sub>

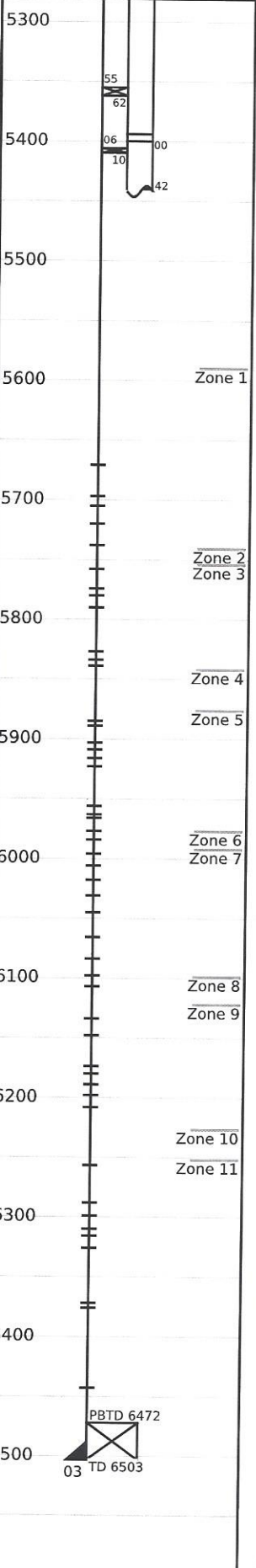
### Remarks

R/A Tracer indicates top perf and packer O.K.  
04/02/15, Ran 1.75" G/R to 5956'.

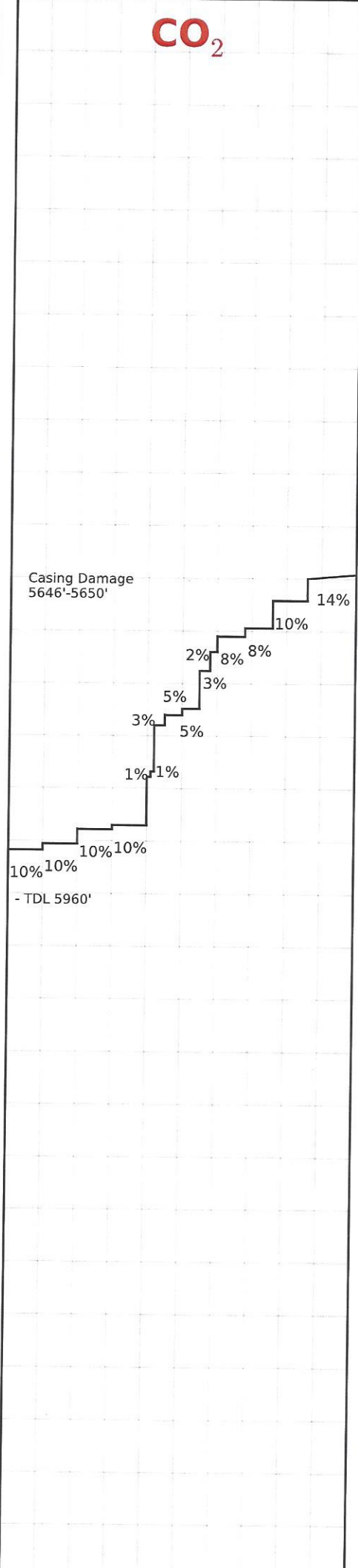
Recorded By: J.R. Hacking

### Mechanical Information

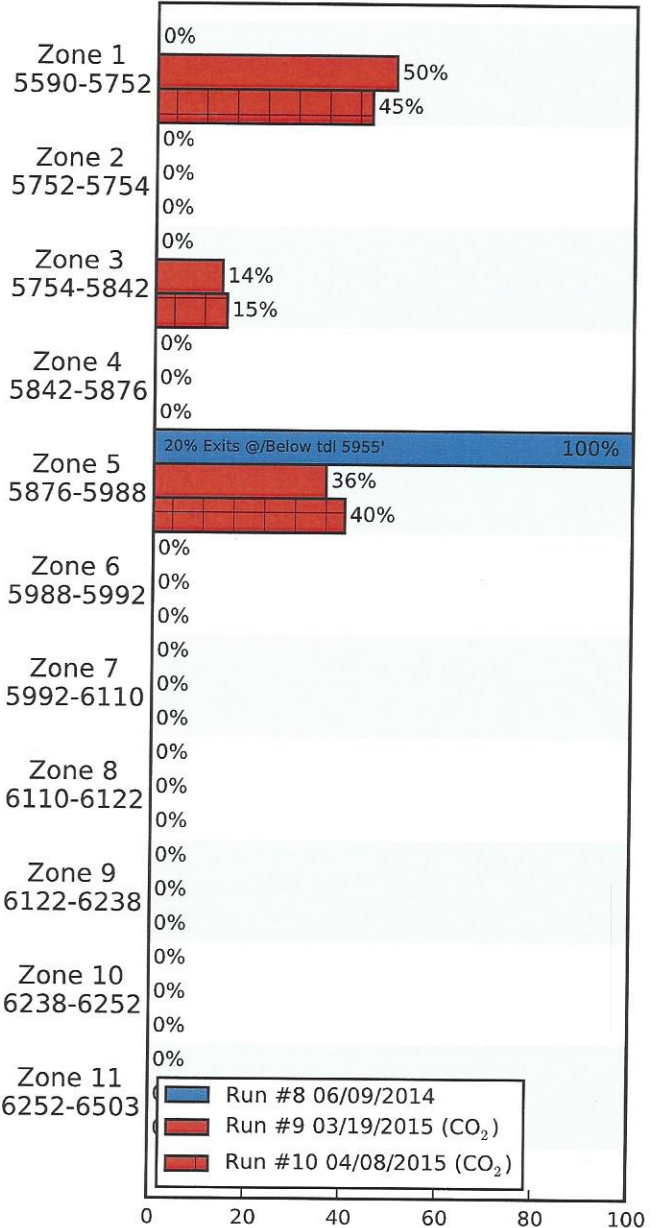
7" 23# Casing 0'-6503'  
P.B.T.D 6472'-6503'  
2-7/8" F.L. Tubing 0'-5355'  
Top Packer 5355'-5362'  
2-7/8" F.G.W. Tubing 5362'-5394'  
On/Off Tool 1.875" "F" 5394'-5400'  
2-7/8" F.G.W. Tubing 5400'-5406'  
Packer 5406'-5410'  
2-7/8" F.G.W. Tubing 5410'-5442'  
L-17



0% 50% 100%



### (%) Injected Into Zone



### Average Temperature (°F)

	Run #8 06/09/2014	Run #9 03/19/2015	Run #10 04/08/2015
Surface	96.4	85.3	83.3
5590-5752	--	--	--
5752-5754	--	--	--
5754-5842	--	--	--
5842-5876	--	--	--
5876-5988	--	--	--
TDL (5960)	105.6	122.2	124.5
5988-5992	--	--	--
5992-6110	--	--	--
6110-6122	--	--	--
6122-6238	--	--	--
6238-6252	--	--	--
6252-6503	--	--	--
Rate (B/D)	None	630	599
Press (PSI)	1125	1620	1703