

Well: Fee 38  
(3033)  
Field: Ranglely, Co.

Survey Data

Run No.27

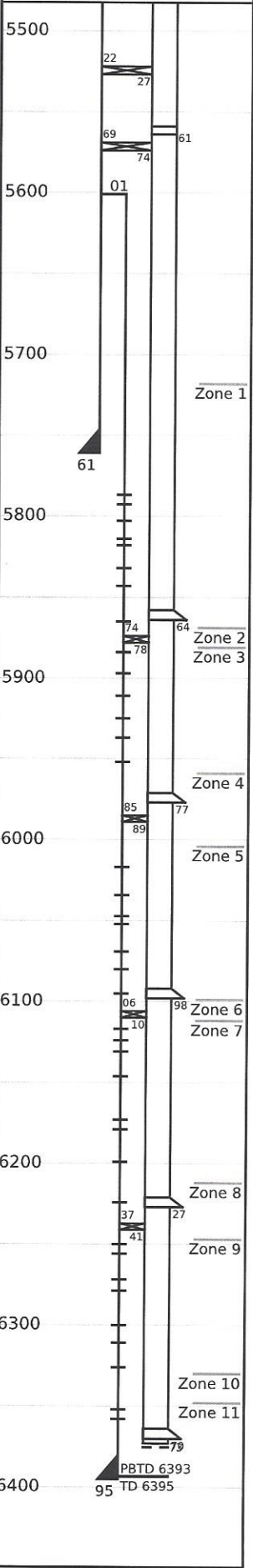
Survey Type: T-S-T  
Date: 05/13/2015  
Metered Rate: 830 B/D  
Measured Rate: 621 B/D  
Desired Rate: N/A  
Service Co: PLS  
Surface Temp: 90.7 °F  
BHT: 126.5 °F  
TBG Pressure: 1775 PSI  
CSG Pressure: 0 PSI  
Pick Up: 5981' TDL  
Inj. Fluid: H<sub>2</sub>O

Remarks

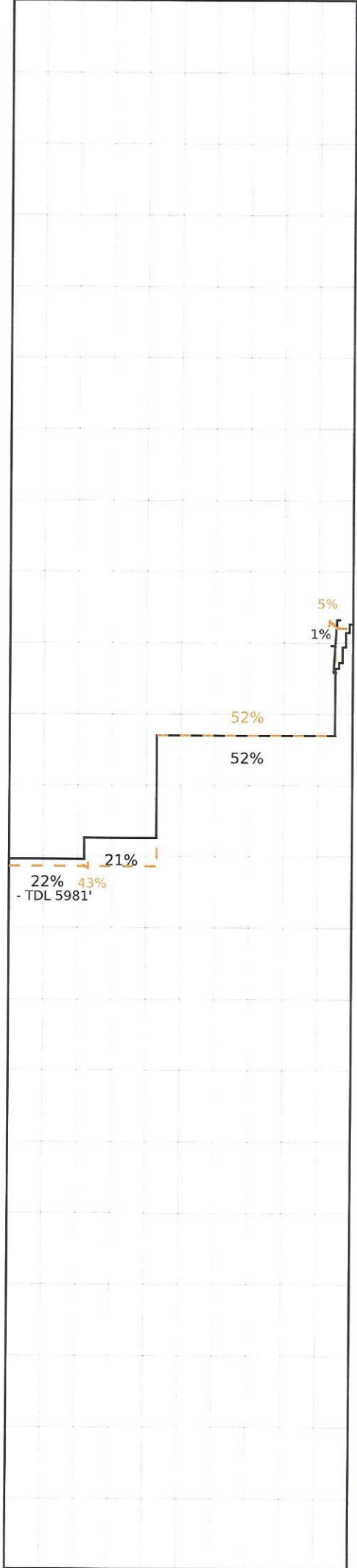
R/A Tracer indicates top perf and packers O.K.  
5-5-15, Ran 1.75" G/R to 5971', had to beat through O/F tool and tight spot at 5780'. Unable to get any deeper.  
Recorded By: J.R. Hacking

Mechanical Information

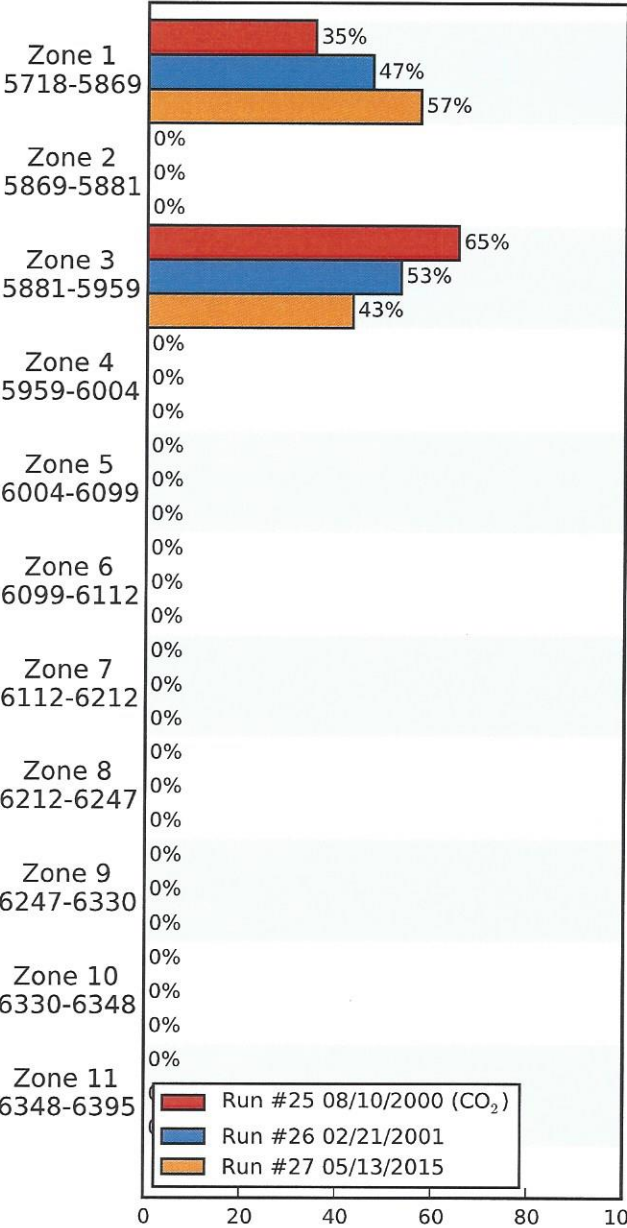
7" 23# Casing 0'-5761'  
5" 18# Liner 5601'-6395'  
P.B.T.D 6393'-6395'  
2-7/8" F.L. Tubing 0'-5522'  
Top Packer 5522'-5527'  
2-7/8" F.G.W. TBG&TK-15 5527'-5559'  
1.875" On/Off Tool 5559'-5561'  
2-3/8" EUE Tubing 5561'-6372'  
"XN" Nipple 6372'-6373'  
Q-15 "B"



0% 50% 100%



(%) Injected Into Zone



Average Temperature (°F)

	Run #25 08/10/2000	Run #26 02/21/2001	Run #27 05/13/2015
Surface	83.9	92.0	90.7
5718-5869	--	--	--
5869-5881	--	--	--
5881-5959	--	--	--
5959-6004	--	--	--
TDL (5981)	153.0	144.0	126.5
6004-6099	--	--	--
6099-6112	--	--	--
6112-6212	--	--	--
6212-6247	--	--	--
6247-6330	--	--	--
6330-6348	--	--	--
6348-6395	--	--	--
Rate (B/D)	600	1300	621
Press (PSI)	2050	1800	1775