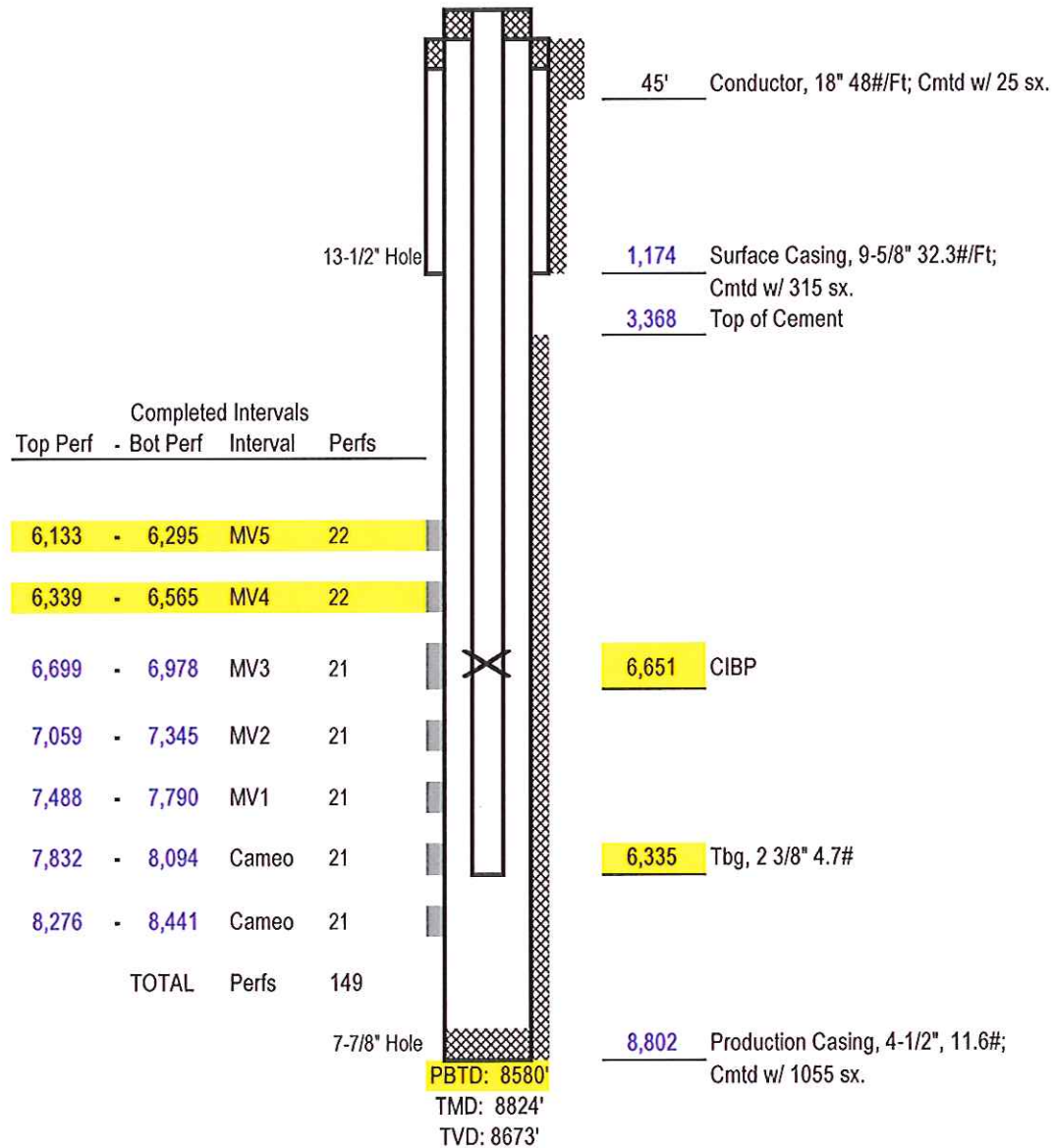


Williams Production RMT Company
RWF 532-25
 API #05-045-17725-00
 1579' FNL x 704' FEL - (SENE) - SHL
 1769' FNL x 1955' FEL - (SWNE) - BHL
 Sec. 25-T6S-R94W
 Garfield County, Colorado

Revised on 6-17-15
 to report Recompletion of: WF4 and WF5



Not to Scale