

# Bayswater Exploration & Production, LLC

Well Name: **Carlson H-15-16HC**

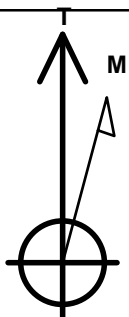
Surface Location: Carlson 15-D Pad Sec.15-T5N-R65W  
North American Datum 1983 , US State Plane 1983 , Colorado Northern Zone

Ground Elevation: 4621.0

+N/-S	+E/-W	Northing	Easting	Latitude	Longitude	Slot
0.0	0.0	1391065.38	3239172.09	40.403697	-104.641185	
		RKB - 22.5'	WELL @ 4643.5ft (RKB - 22.5')			

## WELLBORE TARGET DETAILS

Name	TVD	+N/-S	+E/-W	Shape
SHL 1055'FNL, 339'FEL, SEC.15	1.0	0.0	0.0	Point
BHL 1685'FNL, 2339'FWL, SEC.16	6958.5	-673.8	-7893.4	Point



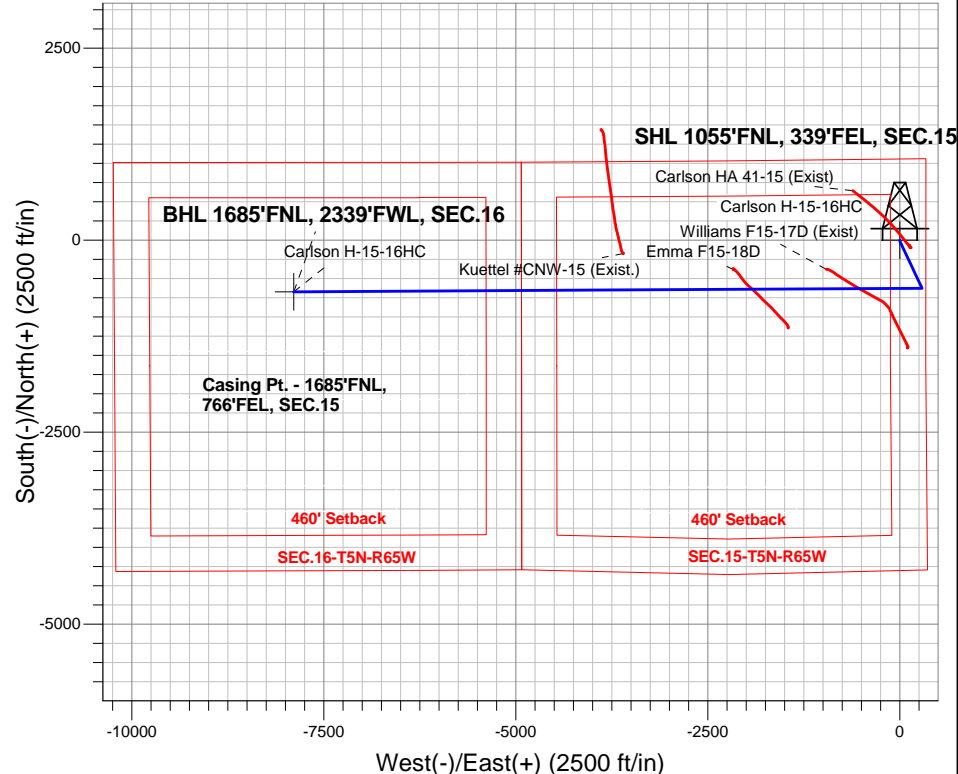
Azimuths to True North  
Magnetic North: 8.26°

Magnetic Field  
Strength: 52725.3nT  
Dip Angle: 66.93°  
Date: 6/18/2015  
Model: IGRF2010

Carlson 15-D Pad Sec.15-T5N-R65W  
Carlson H-15-16HC  
Plan #2 (6-18-15)  
12:26, June 18 2015

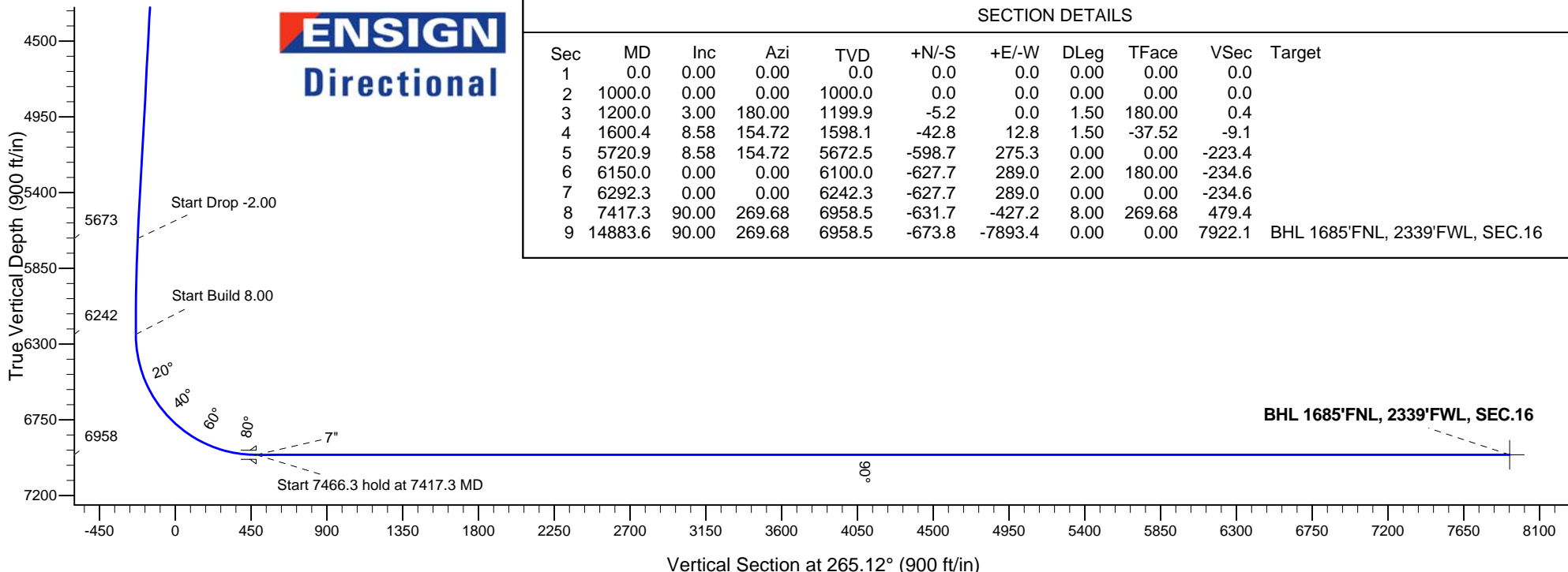
## ANNOTATIONS

TVD	MD	Annotation
1000.0	1000.0	KOP - Start Build 1.50
1199.9	1200.0	Start DLS 1.50 TFO -37.52
5672.5	5720.9	Start Drop -2.00
6242.3	6292.3	Start Build 8.00
6958.5	7417.3	Start 7466.3 hold at 7417.3 MD
6958.5	14883.6	TD at 14883.6



## SECTION DETAILS

Sec	MD	Inc	Azi	TVD	+N/-S	+E/-W	DLeg	TFace	VSec	Target
1	0.0	0.00	0.00	0.0	0.0	0.0	0.00	0.00	0.0	
2	1000.0	0.00	0.00	1000.0	0.0	0.0	0.00	0.00	0.0	
3	1200.0	3.00	180.00	1199.9	-5.2	0.0	1.50	180.00	0.4	
4	1600.4	8.58	154.72	1598.1	-42.8	12.8	1.50	-37.52	-9.1	
5	5720.9	8.58	154.72	5672.5	-598.7	275.3	0.00	0.00	-223.4	
6	6150.0	0.00	0.00	6100.0	-627.7	289.0	2.00	180.00	-234.6	
7	6292.3	0.00	0.00	6242.3	-627.7	289.0	0.00	0.00	-234.6	
8	7417.3	90.00	269.68	6958.5	-631.7	-427.2	8.00	269.68	479.4	
9	14883.6	90.00	269.68	6958.5	-673.8	-7893.4	0.00	0.00	7922.1	BHL 1685'FNL, 2339'FWL, SEC.16





# **Bayswater Exploration & Production, LLC**

**SEC.15-T5N-R65W**

**Carlson 15-D Pad Sec.15-T5N-R65W**

**Carlson H-15-16HC**

**Wellbore #1**

**Plan: Plan #2 (6-18-15)**

## **Standard Planning Report**

**18 June, 2015**



**BAYSWATER**  
**EXPLORATION & PRODUCTION, LLC**

<b>Database:</b>	EDMNEW	<b>Local Co-ordinate Reference:</b>	Well Carlson H-15-16HC
<b>Company:</b>	Bayswater Exploration & Production, LLC	<b>TVD Reference:</b>	WELL @ 4643.5ft (RKB - 22.5')
<b>Project:</b>	SEC.15-T5N-R65W	<b>MD Reference:</b>	WELL @ 4643.5ft (RKB - 22.5')
<b>Site:</b>	Carlson 15-D Pad Sec.15-T5N-R65W	<b>North Reference:</b>	True
<b>Well:</b>	Carlson H-15-16HC	<b>Survey Calculation Method:</b>	Minimum Curvature
<b>Wellbore:</b>	Wellbore #1		
<b>Design:</b>	Plan #2 (6-18-15)		

<b>Project</b>	SEC.15-T5N-R65W, Weld County, Colorado		
<b>Map System:</b>	US State Plane 1983	<b>System Datum:</b>	Mean Sea Level
<b>Geo Datum:</b>	North American Datum 1983		Using Well Reference Point
<b>Map Zone:</b>	Colorado Northern Zone		Using geodetic scale factor

Site		Carlson 15-D Pad Sec.15-T5N-R65W			
Site Position:		Northing:	1,391,065.32 ft	Latitude:	40.403694
From:	Lat/Long	Easting:	3,239,277.09 ft	Longitude:	-104.640808
Position Uncertainty:	0.0 ft	Slot Radius:	"	Grid Convergence:	0.56 °

Well	Carlson H-15-16HC					
Well Position	+N-S	1.1 ft	Northing:	1,391,065.38 ft	Latitude:	40.403697
	+E-W	-105.0 ft	Easting:	3,239,172.09 ft	Longitude:	-104.641185
Position Uncertainty		0.0 ft	Wellhead Elevation:	ft	Ground Level:	4,621.0 ft

<b>Wellbore</b>	Wellbore #1				
<b>Magnetics</b>	<b>Model Name</b>	<b>Sample Date</b>	<b>Declination (°)</b>	<b>Dip Angle (°)</b>	<b>Field Strength (nT)</b>
	IGRF2010	6/18/2015	8.26	66.93	52,725

<b>Design</b>	Plan #2 (6-18-15)			
<b>Audit Notes:</b>				
<b>Version:</b>	<b>Phase:</b>	PROTOTYPE	<b>Tie On Depth:</b>	0.0
<b>Vertical Section:</b>	<b>Depth From (TVD) (ft)</b>	<b>+N/-S (ft)</b>	<b>+E/-W (ft)</b>	<b>Direction (°)</b>
	0.0	0.0	0.0	265.12

<b>Plan Sections</b>										
Measured Depth (ft)	Inclination (°)	Azimuth (°)	Vertical Depth (ft)	+N/-S (ft)	+E/-W (ft)	Dogleg Rate (°/100ft)	Build Rate (°/100ft)	Turn Rate (°/100ft)	TFO (°)	Target
0.0	0.00	0.00	0.0	0.0	0.0	0.00	0.00	0.00	0.00	
1,000.0	0.00	0.00	1,000.0	0.0	0.0	0.00	0.00	0.00	0.00	
1,200.0	3.00	180.00	1,199.9	-5.2	0.0	1.50	1.50	0.00	180.00	
1,600.4	8.58	154.72	1,598.1	-42.8	12.8	1.50	1.39	-6.31	-37.52	
5,720.9	8.58	154.72	5,672.5	-598.7	275.3	0.00	0.00	0.00	0.00	
6,150.0	0.00	0.00	6,100.0	-627.7	289.0	2.00	-2.00	0.00	180.00	
6,292.3	0.00	0.00	6,242.3	-627.7	289.0	0.00	0.00	0.00	0.00	
7,417.3	90.00	269.68	6,958.5	-631.7	-427.2	8.00	8.00	0.00	269.68	
14,883.6	90.00	269.68	6,958.5	-673.8	-7,893.4	0.00	0.00	0.00	0.00	BHL 1685'FNL, 233

<b>Database:</b>	EDMNEW	<b>Local Co-ordinate Reference:</b>	Well Carlson H-15-16HC
<b>Company:</b>	Bayswater Exploration & Production, LLC	<b>TVD Reference:</b>	WELL @ 4643.5ft (RKB - 22.5')
<b>Project:</b>	SEC.15-T5N-R65W	<b>MD Reference:</b>	WELL @ 4643.5ft (RKB - 22.5')
<b>Site:</b>	Carlson 15-D Pad Sec.15-T5N-R65W	<b>North Reference:</b>	True
<b>Well:</b>	Carlson H-15-16HC	<b>Survey Calculation Method:</b>	Minimum Curvature
<b>Wellbore:</b>	Wellbore #1		
<b>Design:</b>	Plan #2 (6-18-15)		

Planned Survey									
Measured Depth (ft)	Inclination (°)	Azimuth (°)	Vertical Depth (ft)	+N/-S (ft)	+E/-W (ft)	Vertical Section (ft)	Dogleg Rate (°/100ft)	Build Rate (°/100ft)	Turn Rate (°/100ft)
0.0	0.00	0.00	0.0	0.0	0.0	0.0	0.00	0.00	0.00
100.0	0.00	0.00	100.0	0.0	0.0	0.0	0.00	0.00	0.00
200.0	0.00	0.00	200.0	0.0	0.0	0.0	0.00	0.00	0.00
300.0	0.00	0.00	300.0	0.0	0.0	0.0	0.00	0.00	0.00
400.0	0.00	0.00	400.0	0.0	0.0	0.0	0.00	0.00	0.00
500.0	0.00	0.00	500.0	0.0	0.0	0.0	0.00	0.00	0.00
600.0	0.00	0.00	600.0	0.0	0.0	0.0	0.00	0.00	0.00
700.0	0.00	0.00	700.0	0.0	0.0	0.0	0.00	0.00	0.00
800.0	0.00	0.00	800.0	0.0	0.0	0.0	0.00	0.00	0.00
900.0	0.00	0.00	900.0	0.0	0.0	0.0	0.00	0.00	0.00
1,000.0	0.00	0.00	1,000.0	0.0	0.0	0.0	0.00	0.00	0.00
<b>KOP - Start Build 1.50</b>									
1,100.0	1.50	180.00	1,100.0	-1.3	0.0	0.1	1.50	1.50	0.00
1,200.0	3.00	180.00	1,199.9	-5.2	0.0	0.4	1.50	1.50	0.00
<b>Start DLS 1.50 TFO -37.52</b>									
1,300.0	4.29	167.69	1,299.7	-11.5	0.8	0.2	1.50	1.29	-12.31
1,400.0	5.68	161.22	1,399.3	-19.8	3.2	-1.5	1.50	1.39	-6.47
1,500.0	7.12	157.32	1,498.7	-30.2	7.2	-4.6	1.50	1.44	-3.90
1,600.0	8.58	154.73	1,597.8	-42.7	12.7	-9.1	1.50	1.46	-2.59
1,600.4	8.58	154.72	1,598.1	-42.8	12.8	-9.1	1.50	1.47	-2.15
1,700.0	8.58	154.72	1,696.6	-56.2	19.1	-14.3	0.00	0.00	0.00
1,800.0	8.58	154.72	1,795.5	-69.7	25.5	-19.5	0.00	0.00	0.00
1,900.0	8.58	154.72	1,894.4	-83.2	31.9	-24.7	0.00	0.00	0.00
2,000.0	8.58	154.72	1,993.3	-96.7	38.2	-29.9	0.00	0.00	0.00
2,100.0	8.58	154.72	2,092.2	-110.2	44.6	-35.1	0.00	0.00	0.00
2,200.0	8.58	154.72	2,191.0	-123.7	51.0	-40.3	0.00	0.00	0.00
2,300.0	8.58	154.72	2,289.9	-137.1	57.3	-45.5	0.00	0.00	0.00
2,400.0	8.58	154.72	2,388.8	-150.6	63.7	-50.7	0.00	0.00	0.00
2,500.0	8.58	154.72	2,487.7	-164.1	70.1	-55.9	0.00	0.00	0.00
2,600.0	8.58	154.72	2,586.6	-177.6	76.5	-61.1	0.00	0.00	0.00
2,700.0	8.58	154.72	2,685.4	-191.1	82.8	-66.3	0.00	0.00	0.00
2,800.0	8.58	154.72	2,784.3	-204.6	89.2	-71.5	0.00	0.00	0.00
2,900.0	8.58	154.72	2,883.2	-218.1	95.6	-76.7	0.00	0.00	0.00
3,000.0	8.58	154.72	2,982.1	-231.6	101.9	-81.9	0.00	0.00	0.00
3,100.0	8.58	154.72	3,081.0	-245.1	108.3	-87.1	0.00	0.00	0.00
3,200.0	8.58	154.72	3,179.9	-258.6	114.7	-92.3	0.00	0.00	0.00
3,300.0	8.58	154.72	3,278.7	-272.1	121.1	-97.5	0.00	0.00	0.00
3,400.0	8.58	154.72	3,377.6	-285.6	127.4	-102.7	0.00	0.00	0.00
3,500.0	8.58	154.72	3,476.5	-299.1	133.8	-107.9	0.00	0.00	0.00
3,600.0	8.58	154.72	3,575.4	-312.5	140.2	-113.1	0.00	0.00	0.00
3,700.0	8.58	154.72	3,674.3	-326.0	146.5	-118.3	0.00	0.00	0.00
3,800.0	8.58	154.72	3,773.1	-339.5	152.9	-123.5	0.00	0.00	0.00
3,900.0	8.58	154.72	3,872.0	-353.0	159.3	-128.7	0.00	0.00	0.00
4,000.0	8.58	154.72	3,970.9	-366.5	165.7	-133.9	0.00	0.00	0.00
4,100.0	8.58	154.72	4,069.8	-380.0	172.0	-139.1	0.00	0.00	0.00
4,200.0	8.58	154.72	4,168.7	-393.5	178.4	-144.3	0.00	0.00	0.00
4,300.0	8.58	154.72	4,267.5	-407.0	184.8	-149.5	0.00	0.00	0.00
4,400.0	8.58	154.72	4,366.4	-420.5	191.1	-154.7	0.00	0.00	0.00
4,500.0	8.58	154.72	4,465.3	-434.0	197.5	-159.9	0.00	0.00	0.00
4,600.0	8.58	154.72	4,564.2	-447.5	203.9	-165.1	0.00	0.00	0.00
4,700.0	8.58	154.72	4,663.1	-461.0	210.3	-170.3	0.00	0.00	0.00
4,800.0	8.58	154.72	4,761.9	-474.5	216.6	-175.5	0.00	0.00	0.00
4,900.0	8.58	154.72	4,860.8	-487.9	223.0	-180.7	0.00	0.00	0.00
5,000.0	8.58	154.72	4,959.7	-501.4	229.4	-185.9	0.00	0.00	0.00

<b>Database:</b>	EDMNEW	<b>Local Co-ordinate Reference:</b>	Well Carlson H-15-16HC
<b>Company:</b>	Bayswater Exploration & Production, LLC	<b>TVD Reference:</b>	WELL @ 4643.5ft (RKB - 22.5')
<b>Project:</b>	SEC.15-T5N-R65W	<b>MD Reference:</b>	WELL @ 4643.5ft (RKB - 22.5')
<b>Site:</b>	Carlson 15-D Pad Sec.15-T5N-R65W	<b>North Reference:</b>	True
<b>Well:</b>	Carlson H-15-16HC	<b>Survey Calculation Method:</b>	Minimum Curvature
<b>Wellbore:</b>	Wellbore #1		
<b>Design:</b>	Plan #2 (6-18-15)		

Planned Survey									
Measured Depth (ft)	Inclination (°)	Azimuth (°)	Vertical Depth (ft)	+N/-S (ft)	+E/-W (ft)	Vertical Section (ft)	Dogleg Rate (°/100ft)	Build Rate (°/100ft)	Turn Rate (°/100ft)
5,100.0	8.58	154.72	5,058.6	-514.9	235.7	-191.1	0.00	0.00	0.00
5,200.0	8.58	154.72	5,157.5	-528.4	242.1	-196.3	0.00	0.00	0.00
5,300.0	8.58	154.72	5,256.3	-541.9	248.5	-201.5	0.00	0.00	0.00
5,400.0	8.58	154.72	5,355.2	-555.4	254.9	-206.7	0.00	0.00	0.00
5,500.0	8.58	154.72	5,454.1	-568.9	261.2	-211.9	0.00	0.00	0.00
5,600.0	8.58	154.72	5,553.0	-582.4	267.6	-217.1	0.00	0.00	0.00
5,700.0	8.58	154.72	5,651.9	-595.9	274.0	-222.3	0.00	0.00	0.00
5,720.9	8.58	154.72	5,672.5	-598.7	275.3	-223.4	0.00	0.00	0.00
Start Drop -2.00									
5,800.0	7.00	154.72	5,750.9	-608.4	279.9	-227.1	2.00	-2.00	0.00
5,900.0	5.00	154.72	5,850.3	-617.8	284.3	-230.8	2.00	-2.00	0.00
6,000.0	3.00	154.72	5,950.1	-624.2	287.3	-233.2	2.00	-2.00	0.00
6,100.0	1.00	154.72	6,050.0	-627.3	288.8	-234.4	2.00	-2.00	0.00
6,150.0	0.00	0.00	6,100.0	-627.7	289.0	-234.6	2.00	-2.00	0.00
6,200.0	0.00	0.00	6,150.0	-627.7	289.0	-234.6	0.00	0.00	0.00
6,292.3	0.00	0.00	6,242.3	-627.7	289.0	-234.6	0.00	0.00	0.00
Start Build 8.00									
6,300.0	0.62	269.68	6,250.0	-627.7	289.0	-234.5	8.03	8.03	0.00
6,400.0	8.62	269.68	6,349.6	-627.7	280.9	-226.5	8.00	8.00	0.00
6,500.0	16.62	269.68	6,447.1	-627.9	259.1	-204.7	8.00	8.00	0.00
6,600.0	24.62	269.68	6,540.6	-628.1	223.9	-169.7	8.00	8.00	0.00
6,700.0	32.62	269.68	6,628.4	-628.3	176.0	-122.0	8.00	8.00	0.00
6,800.0	40.62	269.68	6,708.6	-628.7	116.4	-62.6	8.00	8.00	0.00
6,900.0	48.62	269.68	6,779.7	-629.1	46.3	7.4	8.00	8.00	0.00
7,000.0	56.62	269.68	6,840.3	-629.5	-33.1	86.6	8.00	8.00	0.00
7,100.0	64.62	269.68	6,889.4	-630.0	-120.2	173.3	8.00	8.00	0.00
7,200.0	72.62	269.68	6,925.8	-630.5	-213.2	266.1	8.00	8.00	0.00
7,300.0	80.62	269.68	6,948.9	-631.1	-310.4	363.0	8.00	8.00	0.00
7,400.0	88.62	269.68	6,958.3	-631.6	-409.9	462.2	8.00	8.00	0.00
7,417.3	90.00	269.68	6,958.5	-631.7	-427.2	479.4	7.99	7.99	0.00
Start 7466.3 hold at 7417.3 MD - 7"									
7,500.0	90.00	269.68	6,958.5	-632.2	-509.9	561.8	0.00	0.00	0.00
7,600.0	90.00	269.68	6,958.5	-632.8	-609.9	661.5	0.00	0.00	0.00
7,700.0	90.00	269.68	6,958.5	-633.3	-709.9	761.2	0.00	0.00	0.00
7,800.0	90.00	269.68	6,958.5	-633.9	-809.9	860.9	0.00	0.00	0.00
7,900.0	90.00	269.68	6,958.5	-634.5	-909.9	960.6	0.00	0.00	0.00
8,000.0	90.00	269.68	6,958.5	-635.0	-1,009.9	1,060.3	0.00	0.00	0.00
8,100.0	90.00	269.68	6,958.5	-635.6	-1,109.9	1,159.9	0.00	0.00	0.00
8,200.0	90.00	269.68	6,958.5	-636.1	-1,209.9	1,259.6	0.00	0.00	0.00
8,300.0	90.00	269.68	6,958.5	-636.7	-1,309.9	1,359.3	0.00	0.00	0.00
8,400.0	90.00	269.68	6,958.5	-637.3	-1,409.9	1,459.0	0.00	0.00	0.00
8,500.0	90.00	269.68	6,958.5	-637.8	-1,509.9	1,558.7	0.00	0.00	0.00
8,600.0	90.00	269.68	6,958.5	-638.4	-1,609.9	1,658.4	0.00	0.00	0.00
8,700.0	90.00	269.68	6,958.5	-639.0	-1,709.9	1,758.0	0.00	0.00	0.00
8,800.0	90.00	269.68	6,958.5	-639.5	-1,809.9	1,857.7	0.00	0.00	0.00
8,900.0	90.00	269.68	6,958.5	-640.1	-1,909.9	1,957.4	0.00	0.00	0.00
9,000.0	90.00	269.68	6,958.5	-640.7	-2,009.9	2,057.1	0.00	0.00	0.00
9,100.0	90.00	269.68	6,958.5	-641.2	-2,109.9	2,156.8	0.00	0.00	0.00
9,200.0	90.00	269.68	6,958.5	-641.8	-2,209.9	2,256.5	0.00	0.00	0.00
9,300.0	90.00	269.68	6,958.5	-642.3	-2,309.9	2,356.1	0.00	0.00	0.00
9,400.0	90.00	269.68	6,958.5	-642.9	-2,409.9	2,455.8	0.00	0.00	0.00
9,500.0	90.00	269.68	6,958.5	-643.5	-2,509.9	2,555.5	0.00	0.00	0.00
9,600.0	90.00	269.68	6,958.5	-644.0	-2,609.9	2,655.2	0.00	0.00	0.00

<b>Database:</b>	EDMNEW	<b>Local Co-ordinate Reference:</b>	Well Carlson H-15-16HC
<b>Company:</b>	Bayswater Exploration & Production, LLC	<b>TVD Reference:</b>	WELL @ 4643.5ft (RKB - 22.5')
<b>Project:</b>	SEC.15-T5N-R65W	<b>MD Reference:</b>	WELL @ 4643.5ft (RKB - 22.5')
<b>Site:</b>	Carlson 15-D Pad Sec.15-T5N-R65W	<b>North Reference:</b>	True
<b>Well:</b>	Carlson H-15-16HC	<b>Survey Calculation Method:</b>	Minimum Curvature
<b>Wellbore:</b>	Wellbore #1		
<b>Design:</b>	Plan #2 (6-18-15)		

Planned Survey									
Measured Depth (ft)	Inclination (°)	Azimuth (°)	Vertical Depth (ft)	+N/-S (ft)	+E/-W (ft)	Vertical Section (ft)	Dogleg Rate (°/100ft)	Build Rate (°/100ft)	Turn Rate (°/100ft)
9,700.0	90.00	269.68	6,958.5	-644.6	-2,709.9	2,754.9	0.00	0.00	0.00
9,800.0	90.00	269.68	6,958.5	-645.2	-2,809.9	2,854.6	0.00	0.00	0.00
9,900.0	90.00	269.68	6,958.5	-645.7	-2,909.9	2,954.2	0.00	0.00	0.00
10,000.0	90.00	269.68	6,958.5	-646.3	-3,009.9	3,053.9	0.00	0.00	0.00
10,100.0	90.00	269.68	6,958.5	-646.8	-3,109.9	3,153.6	0.00	0.00	0.00
10,200.0	90.00	269.68	6,958.5	-647.4	-3,209.9	3,253.3	0.00	0.00	0.00
10,300.0	90.00	269.68	6,958.5	-648.0	-3,309.9	3,353.0	0.00	0.00	0.00
10,400.0	90.00	269.68	6,958.5	-648.5	-3,409.9	3,452.7	0.00	0.00	0.00
10,500.0	90.00	269.68	6,958.5	-649.1	-3,509.9	3,552.4	0.00	0.00	0.00
10,600.0	90.00	269.68	6,958.5	-649.7	-3,609.9	3,652.0	0.00	0.00	0.00
10,700.0	90.00	269.68	6,958.5	-650.2	-3,709.9	3,751.7	0.00	0.00	0.00
10,800.0	90.00	269.68	6,958.5	-650.8	-3,809.9	3,851.4	0.00	0.00	0.00
10,900.0	90.00	269.68	6,958.5	-651.4	-3,909.9	3,951.1	0.00	0.00	0.00
11,000.0	90.00	269.68	6,958.5	-651.9	-4,009.9	4,050.8	0.00	0.00	0.00
11,100.0	90.00	269.68	6,958.5	-652.5	-4,109.9	4,150.5	0.00	0.00	0.00
11,200.0	90.00	269.68	6,958.5	-653.0	-4,209.9	4,250.1	0.00	0.00	0.00
11,300.0	90.00	269.68	6,958.5	-653.6	-4,309.9	4,349.8	0.00	0.00	0.00
11,400.0	90.00	269.68	6,958.5	-654.2	-4,409.9	4,449.5	0.00	0.00	0.00
11,500.0	90.00	269.68	6,958.5	-654.7	-4,509.8	4,549.2	0.00	0.00	0.00
11,600.0	90.00	269.68	6,958.5	-655.3	-4,609.8	4,648.9	0.00	0.00	0.00
11,700.0	90.00	269.68	6,958.5	-655.9	-4,709.8	4,748.6	0.00	0.00	0.00
11,800.0	90.00	269.68	6,958.5	-656.4	-4,809.8	4,848.2	0.00	0.00	0.00
11,900.0	90.00	269.68	6,958.5	-657.0	-4,909.8	4,947.9	0.00	0.00	0.00
12,000.0	90.00	269.68	6,958.5	-657.5	-5,009.8	5,047.6	0.00	0.00	0.00
12,100.0	90.00	269.68	6,958.5	-658.1	-5,109.8	5,147.3	0.00	0.00	0.00
12,200.0	90.00	269.68	6,958.5	-658.7	-5,209.8	5,247.0	0.00	0.00	0.00
12,300.0	90.00	269.68	6,958.5	-659.2	-5,309.8	5,346.7	0.00	0.00	0.00
12,400.0	90.00	269.68	6,958.5	-659.8	-5,409.8	5,446.3	0.00	0.00	0.00
12,500.0	90.00	269.68	6,958.5	-660.4	-5,509.8	5,546.0	0.00	0.00	0.00
12,600.0	90.00	269.68	6,958.5	-660.9	-5,609.8	5,645.7	0.00	0.00	0.00
12,700.0	90.00	269.68	6,958.5	-661.5	-5,709.8	5,745.4	0.00	0.00	0.00
12,800.0	90.00	269.68	6,958.5	-662.1	-5,809.8	5,845.1	0.00	0.00	0.00
12,900.0	90.00	269.68	6,958.5	-662.6	-5,909.8	5,944.8	0.00	0.00	0.00
13,000.0	90.00	269.68	6,958.5	-663.2	-6,009.8	6,044.5	0.00	0.00	0.00
13,100.0	90.00	269.68	6,958.5	-663.7	-6,109.8	6,144.1	0.00	0.00	0.00
13,200.0	90.00	269.68	6,958.5	-664.3	-6,209.8	6,243.8	0.00	0.00	0.00
13,300.0	90.00	269.68	6,958.5	-664.9	-6,309.8	6,343.5	0.00	0.00	0.00
13,400.0	90.00	269.68	6,958.5	-665.4	-6,409.8	6,443.2	0.00	0.00	0.00
13,500.0	90.00	269.68	6,958.5	-666.0	-6,509.8	6,542.9	0.00	0.00	0.00
13,600.0	90.00	269.68	6,958.5	-666.6	-6,609.8	6,642.6	0.00	0.00	0.00
13,700.0	90.00	269.68	6,958.5	-667.1	-6,709.8	6,742.2	0.00	0.00	0.00
13,800.0	90.00	269.68	6,958.5	-667.7	-6,809.8	6,841.9	0.00	0.00	0.00
13,900.0	90.00	269.68	6,958.5	-668.3	-6,909.8	6,941.6	0.00	0.00	0.00
14,000.0	90.00	269.68	6,958.5	-668.8	-7,009.8	7,041.3	0.00	0.00	0.00
14,100.0	90.00	269.68	6,958.5	-669.4	-7,109.8	7,141.0	0.00	0.00	0.00
14,200.0	90.00	269.68	6,958.5	-669.9	-7,209.8	7,240.7	0.00	0.00	0.00
14,300.0	90.00	269.68	6,958.5	-670.5	-7,309.8	7,340.3	0.00	0.00	0.00
14,400.0	90.00	269.68	6,958.5	-671.1	-7,409.8	7,440.0	0.00	0.00	0.00
14,500.0	90.00	269.68	6,958.5	-671.6	-7,509.8	7,539.7	0.00	0.00	0.00
14,600.0	90.00	269.68	6,958.5	-672.2	-7,609.8	7,639.4	0.00	0.00	0.00
14,700.0	90.00	269.68	6,958.5	-672.8	-7,709.8	7,739.1	0.00	0.00	0.00
14,800.0	90.00	269.68	6,958.5	-673.3	-7,809.8	7,838.8	0.00	0.00	0.00
14,883.6	90.00	269.68	6,958.5	-673.8	-7,893.4	7,922.1	0.00	0.00	0.00

<b>Database:</b>	EDMNEW	<b>Local Co-ordinate Reference:</b>	Well Carlson H-15-16HC
<b>Company:</b>	Bayswater Exploration & Production, LLC	<b>TVD Reference:</b>	WELL @ 4643.5ft (RKB - 22.5')
<b>Project:</b>	SEC.15-T5N-R65W	<b>MD Reference:</b>	WELL @ 4643.5ft (RKB - 22.5')
<b>Site:</b>	Carlson 15-D Pad Sec.15-T5N-R65W	<b>North Reference:</b>	True
<b>Well:</b>	Carlson H-15-16HC	<b>Survey Calculation Method:</b>	Minimum Curvature
<b>Wellbore:</b>	Wellbore #1		
<b>Design:</b>	Plan #2 (6-18-15)		

Targets									
Target Name	Dip Angle (°)	Dip Dir. (°)	TVD (ft)	+N/-S (ft)	+E/-W (ft)	Northing (ft)	Easting (ft)	Latitude	Longitude
- hit/miss target									
- Shape									
SHL 1055'FNL, 339'FI	0.00	0.00	1.0	0.0	0.0	1,391,065.40	3,239,172.09	40.403697	-104.641185
- plan hits target center									
- Point									
BHL 1685'FNL, 2339'I	0.00	0.00	6,958.5	-673.8	-7,893.4	1,390,315.20	3,231,285.94	40.401844	-104.669526
- plan hits target center									
- Point									

Casing Points				
Measured Depth (ft)	Vertical Depth (ft)	Name	Casing Diameter (")	Hole Diameter (")
7,417.3	6,958.5	7"	7	7-1/2

Plan Annotations				
Measured Depth (ft)	Vertical Depth (ft)	Local Coordinates +N/-S (ft)	+E/-W (ft)	Comment
1,000.0	1,000.0	0.0	0.0	KOP - Start Build 1.50
1,200.0	1,199.9	-5.2	0.0	Start DLS 1.50 TFO -37.52
5,720.9	5,672.5	-598.7	275.3	Start Drop -2.00
6,292.3	6,242.3	-627.7	289.0	Start Build 8.00
7,417.3	6,958.5	-631.7	-427.2	Start 7466.3 hold at 7417.3 MD
14,883.6	6,958.5	-673.8	-7,893.4	TD at 14883.6