



# State of Colorado Oil and Gas Conservation Commission

1120 Lincoln Street, Suite 801, Denver, Colorado 80203 (303) 894-2100 Fax: (303) 894-2109



FOR OGCC USE ONLY

## MECHANICAL INTEGRITY TEST

Fill out Part II of this form if well tested is a permitted or pending injection well. Send original plus one copy.

1. Duration of the pressure test must be a minimum of 15 minutes.
2. A pressure chart must accompany this report if this test was not witnessed by a OGCC representative.
3. For production wells, test pressures must be at a minimum of 300 psig.
4. For injection wells, test pressures must be at 300 psig or minimum injection pressure, whichever is greater.
5. A minimum 300 psi differential pressure must be maintained between the tubing and tubing/casing annulus pressure.
6. Do not use this form if submitting under provisions of Rule 328.a. (1) B. or C.
7. OGCC notification must be provided prior to the test.
8. Packers or bridge plugs, etc., must be set within 250 feet of the perforated interval to be considered a valid test.

OGCC Operator Number: 16700

Name of Operator: Chevron USA Inc

Address: 100 Chevron Road

City: Rangely State: CO Zip: 81648

API Number: 05-103-09233

Field Name: Rangely Weber Sand Unit Field Number: 72370

Well Name: UNION PACIFIC

Number: 44AX20

Location (QtrQtr, Sec, Twp, Rng, Meridian): NWSE Section 20, T2N, R102W, 6TH P.M.

Contact Name and Telephone

Diane L Peterson

No: 970-675-3842

Fax: 970-675-3800

## Complete the Attachment Checklist

	OGCC	OGCC
Pressure Chart	✓	
Cement Bond Log		
Tracer Survey		
Temperature Survey		
WELLBORE SCHEMATIC		

☐ SHUT-IN PRODUCTION WELL

☒ INJECTION WELL

Facility No.: 150200

## Part I Pressure Test

☒ 5-Year UIC Test

☐ Test to Maintain SI/TA Status

☐ Reset Packer

☐ Verification of Repairs

☐ Tubing/Packer Leak

☐ Casing Leak

☐ Other (Describe):

Describe Repairs:

NA - Not Applicable

## Wellbore Data at Time Test

Injection/Producing Zone(s)

Weber Formation

Perforated Interval:

☐ NA

Open Hole Interval:

☒ NA

5940-6435'

## Casing Test

☐ NA

Use when perforations or open hole is isolated by bridge plug or cement plug  
Bridge Plug or Cement Plug Depth

## Tubing Casing/Annulus Test

☐ NA

Tubing Size:

2 7/8"

Tubing Depth:

6090.49'

Top Packer Depth:

5804.1'

Multiple Packers?

☐ YES

☐ NO

## Test Data

Test Date

6/19/15

Well Status During Test

INJECTING

Date of Last Approved MIT

4/11/2011

Casing Pressure Before Test

1200

Initial Tubing Pressure

1700

Final Tubing Pressure

1700

Starting Casing Test Pressure

1200

Casing Pressure - 5 Min.

1200

Casing Pressure - 10 Min.

1200

Final Casing Test Pressure

1200

Pressure Loss or Gain During Test

0

Test Witnessed by State Representative?

☒ YES

☐ NO

OGCC Field Representative:

CHUCK BROWNING

## Part II Wellbore Channel Test

Complete only if well is or will be an injection well.

Indicate method used for cement integrity test, attach appropriate records, charts, or logs unless previously submitted.

☐ Tracer Survey

Run Date:

☐ CBL or Equivalent

Run Date:

☐ Temperature Survey

Run Date:

I hereby certify that the statements made in this form are, to the best of my knowledge, true, correct, and complete.

Print Name: Diane L Peterson

Form 42#400852458

Field Insp#668403 163

Signed:

*Diane L Peterson*

Title: Permitting Specialist

Date:

6/19/15

OGCC Approval:

*Chuck Browning*

Title:

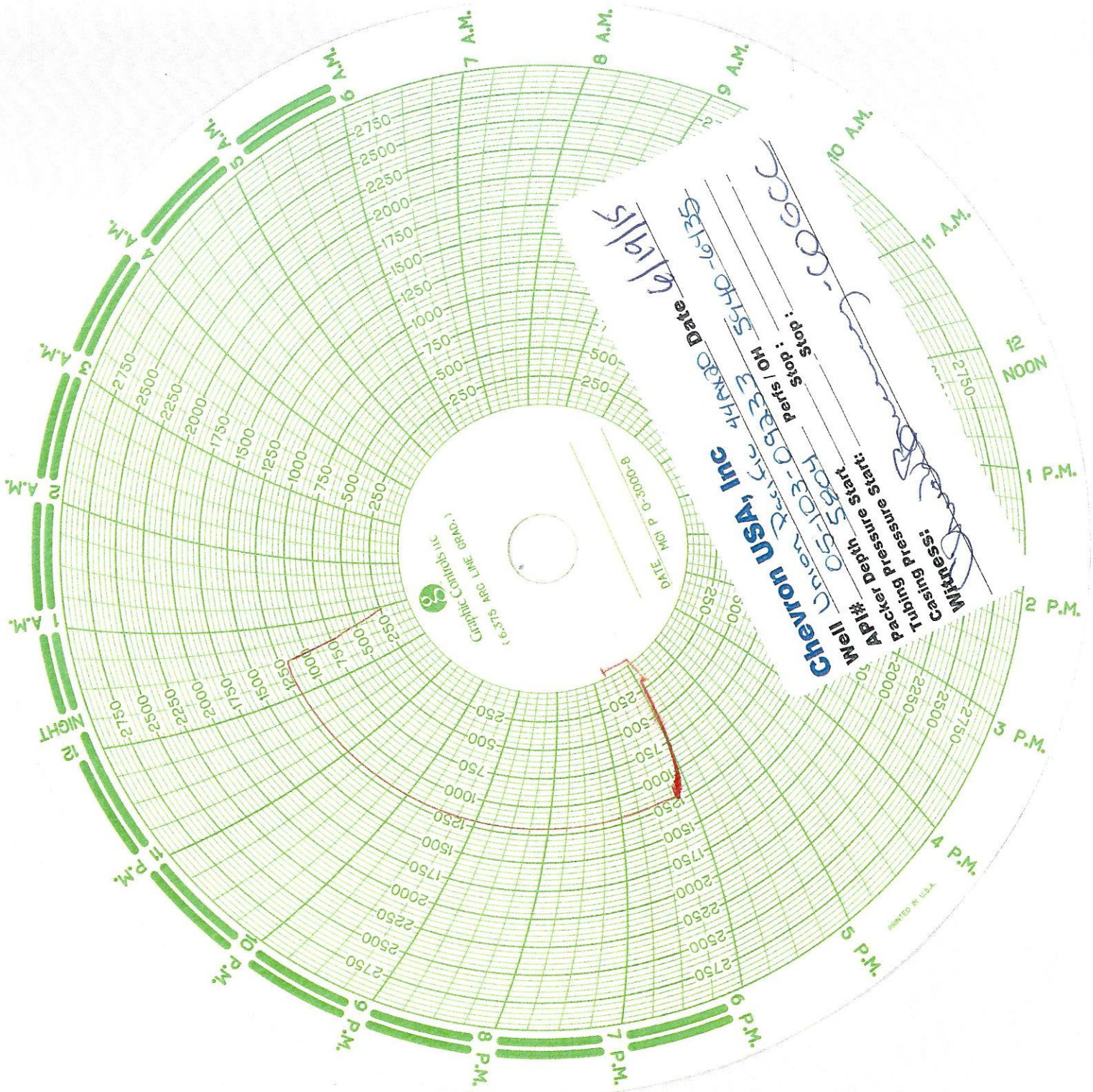
New Insp

Date:

6/19/15

Conditions of Approval, if any:





6/19/15

DATE

44 AKX30

Perfs / OH

Stop: 05-103-09233

Stop: 05-103-09233

Well: 05-103-09233

API#

Tubing pressure start

Casing pressure start

Witness:

Signature

Signature

Signature