

BONANZA CREEK ENERGY INC.

WELD COUNTY, COLORADO (NAD 83)

SE SW SEC. 27 T5N R63W 6th P.M.

NORTH PLATTE K31-O34-34HNB

ORIGINAL WELLBORE

23 April, 2015

Plan: PROOSAL #2





Project: WELD COUNTY, COLORADO (NAD 83)
Site: SE SW SEC. 27 T5N R63W 6th P.M.
Well: NORTH PLATTE K31-O34-34HNB
Wellbore: ORIGINAL WELLBORE
Design: PROPOSAL #2

ANNOTATIONS									
TVD	MD	Inc	Azi	+N/-S	+E/-W	Vsect	Dep	Annotation	
900.0	900.0	0.00	0.00	0.0	0.0	0.0	0.0	START NUDGE (2°/100ft BUR)	
1680.1	1690.1	15.80	167.21	-105.6	24.0	106.7	108.3	EOB TO 15.8° INC	
4999.6	5139.9	15.80	167.21	-1021.7	232.0	1032.3	1047.7	END OF TANGENT	
5779.7	5930.0	0.00	0.00	-1127.3	256.0	1138.9	1156.0	EOD TO VERTICAL	
5809.7	5960.0	0.00	0.00	-1127.3	256.0	1138.9	1156.0	KOP (12°/100ft BUR)	
6270.9	6585.0	75.00	179.40	-1481.2	259.7	1492.5	1509.9	START OF TANGENT	
6296.8	6685.0	75.00	179.40	-1577.8	260.7	1589.0	1606.5	END OF TANGENT	
6313.0	6810.0	90.00	179.40	-1701.3	262.0	1712.5	1730.1	7" ICP - NORTH PLATTE K31-O34-34HNB	
6313.0	11087.2	90.00	179.41	-5978.3	306.6	5986.2	6007.3	BHL - NORH PLATTE K31-O34-34HNB	

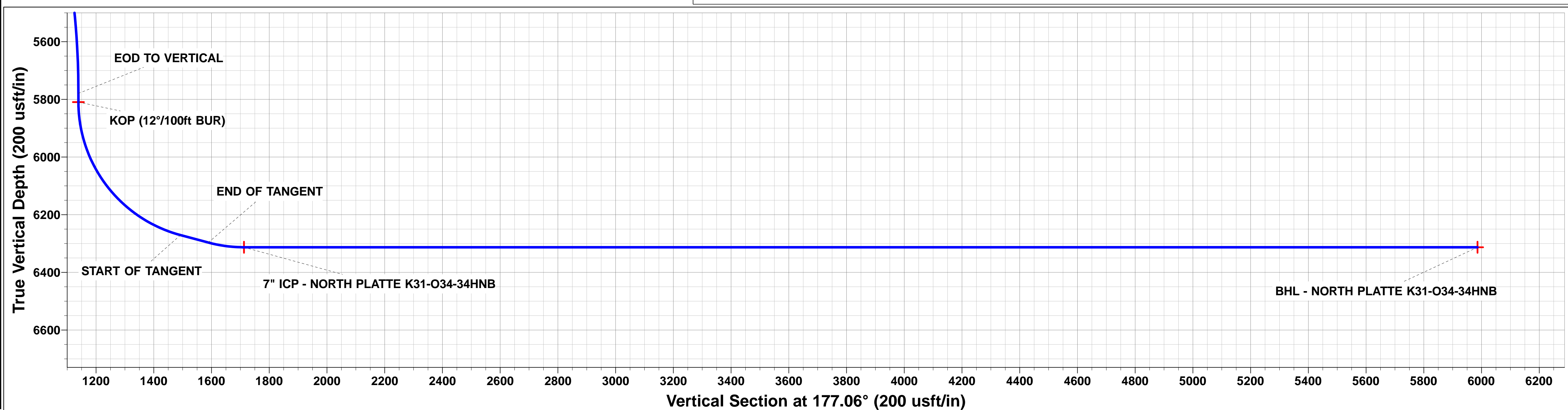
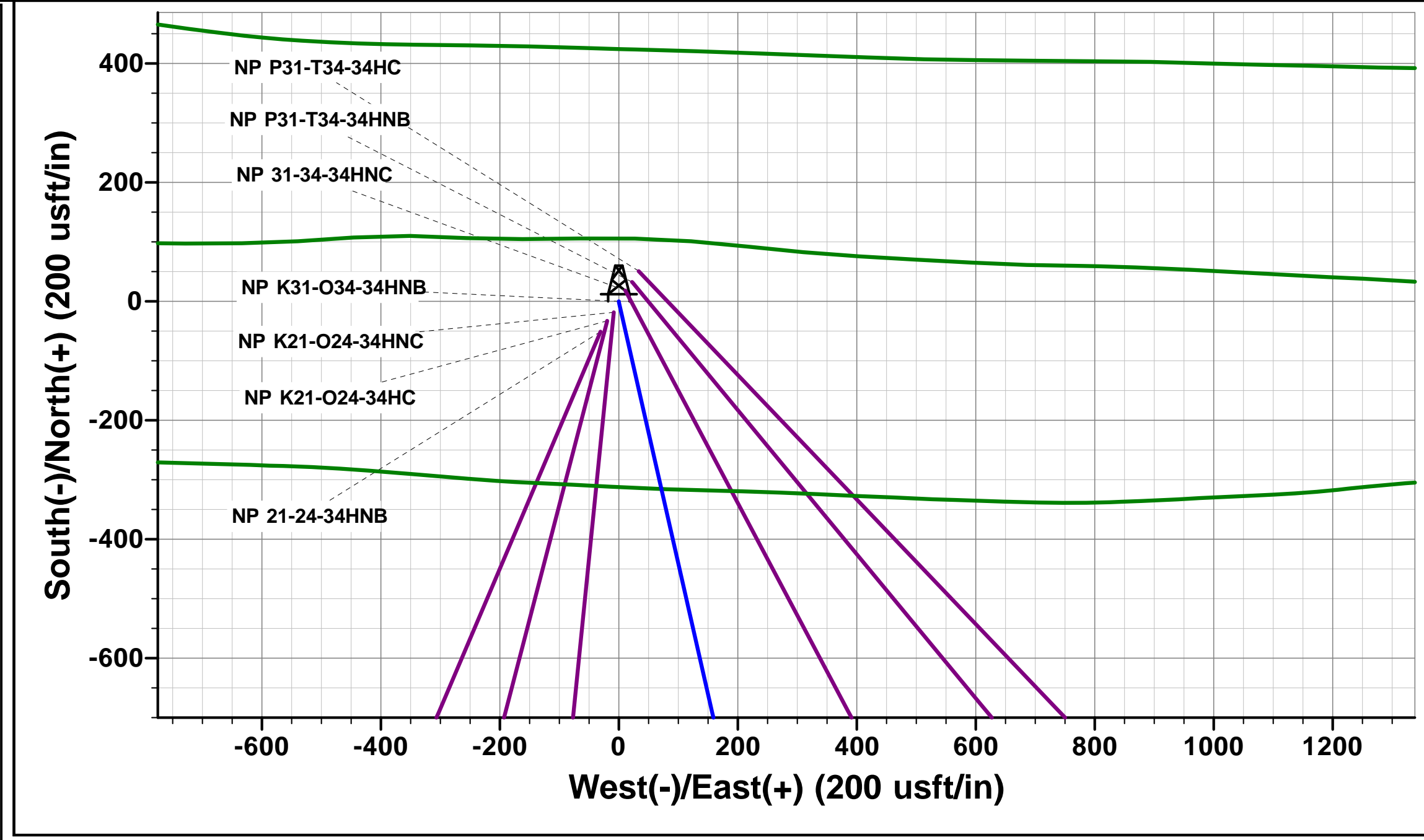
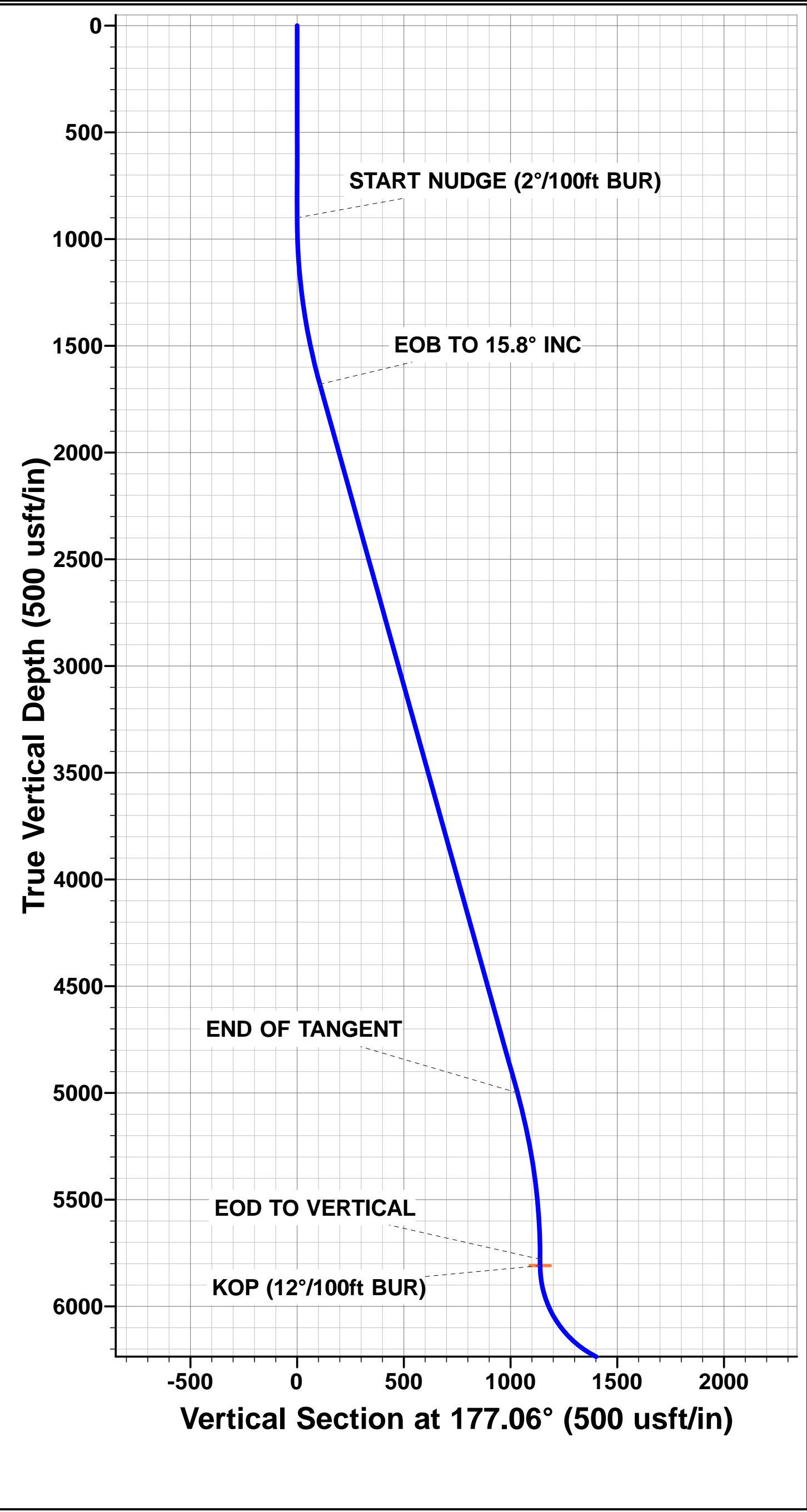
PROPOSED LOCAL COORDINATES:

SHL: 1170ft FSL & 2482ft FWL Sec 27

7" ICP : 531ft FNL & 2443ft FEL Sec 34

BHL: 470ft FSL & 2397ft FEL Sec 34

WELLBORE TARGET DETAILS (LAT/LONG)					
Name	TVD	+N/-S	+E/-W	Latitude	Longitude
KOP - NORTH PLATTE K31-O34-34HNB	5809.7	-1127.3	256.0	40.363336	-104.421451
7" ICP - NORTH PLATTE K31-O34-34HNB	6313.0	-1701.3	262.0	40.361760	-104.421430
BHL - NORTH PLATTE K31-O34-34HNB	6313.0	-5978.3	306.6	40.350020	-104.421270



Planning Report



Database:	EDM 5000.1 Single User Db	Local Co-ordinate Reference:	Well NORTH PLATTE K31-O34-34HNB
Company:	BONANZA CREEK ENERGY INC.	TVD Reference:	KB-EST @ 4558.0usft (Original Well Elev)
Project:	WELD COUNTY, COLORADO (NAD 83)	MD Reference:	KB-EST @ 4558.0usft (Original Well Elev)
Site:	SE SW SEC. 27 T5N R63W 6th P.M.	North Reference:	True
Well:	NORTH PLATTE K31-O34-34HNB	Survey Calculation Method:	Minimum Curvature
Wellbore:	ORIGINAL WELLBORE		
Design:	PROOSAL #2		

Project	WELD COUNTY, COLORADO (NAD 83)		
Map System:	US State Plane 1983	System Datum:	Mean Sea Level
Geo Datum:	North American Datum 1983		
Map Zone:	Colorado Northern Zone		Using geodetic scale factor

Site	SE SW SEC. 27 T5N R63W 6th P.M.		
Site Position:		Northing:	1,378,104.19 usft
From:	Lat/Long	Easting:	3,300,242.31 usft
Position Uncertainty:	0.0 usft	Slot Radius:	1.10000ft
		Latitude:	40.366290
		Longitude:	-104.422480
		Grid Convergence:	0.70 °

Well	NORTH PLATTE K31-O34-34HNB		
Well Position	+N-S	51.0 usft	Northing:
	+E-W	30.7 usft	Easting:
Position Uncertainty		0.0 usft	Wellhead Elevation:
			Latitude:
			Longitude:
			Ground Level:

Wellbore	ORIGINAL WELLBORE				
Magnetics	Model Name	Sample Date	Declination (°)	Dip Angle (°)	Field Strength (nT)
	IGRF2015	23/04/2015	8.25	66.94	52,659

Design	PROOSAL #2			
Audit Notes:				
Version:	Phase:	PROTOTYPE	Tie On Depth:	0.0
Vertical Section:	Depth From (TVD) (usft)	+N-S (usft)	+E-W (usft)	Direction (°)
	6,313.0	0.0	0.0	177.06

Plan Sections											
MD (usft)	Inc (°)	Azi (°)	Vertical Depth	SS (usft)	+N-S (usft)	+E-W (usft)	Dogleg Rate (°/100usf)	Build Rate (°/100usf)	Turn Rate (°/100usf)	TFO (°)	Target
0.0	0.00	0.00	0.0	-4,558.0	0.0	0.0	0.00	0.00	0.00	0.00	
900.0	0.00	0.00	900.0	-3,658.0	0.0	0.0	0.00	0.00	0.00	0.00	
1,690.1	15.80	167.21	1,680.1	-2,877.9	-105.6	24.0	2.00	2.00	0.00	167.21	
5,139.9	15.80	167.21	4,999.6	441.6	-1,021.7	232.0	0.00	0.00	0.00	0.00	
5,930.0	0.00	0.00	5,779.7	1,221.7	-1,127.3	256.0	2.00	-2.00	0.00	180.00	
5,960.0	0.00	0.00	5,809.7	1,251.7	-1,127.3	256.0	0.00	0.00	0.00	0.00	KOP - NORTH PLA
6,585.0	75.00	179.40	6,270.9	1,712.9	-1,481.2	259.7	12.00	12.00	0.00	179.40	
6,685.0	75.00	179.40	6,296.8	1,738.8	-1,577.8	260.7	0.00	0.00	0.00	0.00	
6,810.0	90.00	179.40	6,313.0	1,755.0	-1,701.3	262.0	12.00	12.00	0.00	0.00	
11,087.2	90.00	179.41	6,313.0	1,755.0	-5,978.3	306.6	0.00	0.00	0.00	76.94	BHL - NORTH PLA

Planning Report



Database:	EDM 5000.1 Single User Db	Local Co-ordinate Reference:	Well NORTH PLATTE K31-O34-34HNB
Company:	BONANZA CREEK ENERGY INC.	TVD Reference:	KB-EST @ 4558.0usft (Original Well Elev)
Project:	WELD COUNTY, COLORADO (NAD 83)	MD Reference:	KB-EST @ 4558.0usft (Original Well Elev)
Site:	SE SW SEC. 27 T5N R63W 6th P.M.	North Reference:	True
Well:	NORTH PLATTE K31-O34-34HNB	Survey Calculation Method:	Minimum Curvature
Wellbore:	ORIGINAL WELLBORE		
Design:	PROOSAL #2		

Planned Survey										
MD (usft)	Inc (°)	Azi (°)	TVD (usft)	SS (usft)	+N/-S (usft)	+E/-W (usft)	Vertical Section (usft)	Dogleg Rate (°/100usft)	Build Rate (°/100usft)	Turn Rate (°/100usft)
0.0	0.00	0.00	0.0	4,558.00	0.0	0.0	0.0	0.00	0.00	0.00
100.0	0.00	0.00	100.0	4,458.00	0.0	0.0	0.0	0.00	0.00	0.00
200.0	0.00	0.00	200.0	4,358.00	0.0	0.0	0.0	0.00	0.00	0.00
300.0	0.00	0.00	300.0	4,258.00	0.0	0.0	0.0	0.00	0.00	0.00
400.0	0.00	0.00	400.0	4,158.00	0.0	0.0	0.0	0.00	0.00	0.00
500.0	0.00	0.00	500.0	4,058.00	0.0	0.0	0.0	0.00	0.00	0.00
600.0	0.00	0.00	600.0	3,958.00	0.0	0.0	0.0	0.00	0.00	0.00
700.0	0.00	0.00	700.0	3,858.00	0.0	0.0	0.0	0.00	0.00	0.00
800.0	0.00	0.00	800.0	3,758.00	0.0	0.0	0.0	0.00	0.00	0.00
START NUDGE (2°/100ft BUR)										
900.0	0.00	0.00	900.0	3,658.00	0.0	0.0	0.0	0.00	0.00	0.00
1,000.0	2.00	167.21	1,000.0	3,558.02	-1.7	0.4	1.7	2.00	2.00	0.00
1,100.0	4.00	167.21	1,099.8	3,458.16	-6.8	1.5	6.9	2.00	2.00	0.00
1,200.0	6.00	167.21	1,199.5	3,358.55	-15.3	3.5	15.5	2.00	2.00	0.00
1,300.0	8.00	167.21	1,298.7	3,259.30	-27.2	6.2	27.5	2.00	2.00	0.00
1,400.0	10.00	167.21	1,397.5	3,160.53	-42.4	9.6	42.9	2.00	2.00	0.00
1,500.0	12.00	167.21	1,495.6	3,062.38	-61.0	13.9	61.7	2.00	2.00	0.00
1,600.0	14.00	167.21	1,593.1	2,964.94	-83.0	18.8	83.8	2.00	2.00	0.00
EOB TO 15.8° INC										
1,690.1	15.80	167.21	1,680.1	2,877.85	-105.6	24.0	106.7	2.00	2.00	0.00
1,700.0	15.80	167.21	1,689.6	2,868.35	-108.2	24.6	109.3	0.00	0.00	0.00
1,800.0	15.80	167.21	1,785.9	2,772.13	-134.8	30.6	136.2	0.00	0.00	0.00
1,900.0	15.80	167.21	1,882.1	2,675.91	-161.3	36.6	163.0	0.00	0.00	0.00
2,000.0	15.80	167.21	1,978.3	2,579.69	-187.9	42.7	189.8	0.00	0.00	0.00
2,100.0	15.80	167.21	2,074.5	2,483.47	-214.4	48.7	216.6	0.00	0.00	0.00
2,200.0	15.80	167.21	2,170.8	2,387.25	-241.0	54.7	243.5	0.00	0.00	0.00
2,300.0	15.80	167.21	2,267.0	2,291.03	-267.5	60.8	270.3	0.00	0.00	0.00
2,400.0	15.80	167.21	2,363.2	2,194.81	-294.1	66.8	297.1	0.00	0.00	0.00
2,500.0	15.80	167.21	2,459.4	2,098.59	-320.7	72.8	324.0	0.00	0.00	0.00
2,600.0	15.80	167.21	2,555.6	2,002.37	-347.2	78.8	350.8	0.00	0.00	0.00
2,700.0	15.80	167.21	2,651.9	1,906.15	-373.8	84.9	377.6	0.00	0.00	0.00
2,800.0	15.80	167.21	2,748.1	1,809.93	-400.3	90.9	404.5	0.00	0.00	0.00
2,900.0	15.80	167.21	2,844.3	1,713.71	-426.9	96.9	431.3	0.00	0.00	0.00
3,000.0	15.80	167.21	2,940.5	1,617.49	-453.4	103.0	458.1	0.00	0.00	0.00
3,100.0	15.80	167.21	3,036.7	1,521.26	-480.0	109.0	484.9	0.00	0.00	0.00
3,200.0	15.80	167.21	3,133.0	1,425.04	-506.5	115.0	511.8	0.00	0.00	0.00
3,300.0	15.80	167.21	3,229.2	1,328.82	-533.1	121.1	538.6	0.00	0.00	0.00
3,400.0	15.80	167.21	3,325.4	1,232.60	-559.7	127.1	565.4	0.00	0.00	0.00
3,500.0	15.80	167.21	3,421.6	1,136.38	-586.2	133.1	592.3	0.00	0.00	0.00
3,600.0	15.80	167.21	3,517.8	1,040.16	-612.8	139.2	619.1	0.00	0.00	0.00
3,700.0	15.80	167.21	3,614.1	943.94	-639.3	145.2	645.9	0.00	0.00	0.00
3,800.0	15.80	167.21	3,710.3	847.72	-665.9	151.2	672.8	0.00	0.00	0.00
3,900.0	15.80	167.21	3,806.5	751.50	-692.4	157.2	699.6	0.00	0.00	0.00
4,000.0	15.80	167.21	3,902.7	655.28	-719.0	163.3	726.4	0.00	0.00	0.00
4,100.0	15.80	167.21	3,998.9	559.06	-745.6	169.3	753.2	0.00	0.00	0.00
4,200.0	15.80	167.21	4,095.2	462.84	-772.1	175.3	780.1	0.00	0.00	0.00
4,300.0	15.80	167.21	4,191.4	366.62	-798.7	181.4	806.9	0.00	0.00	0.00
4,400.0	15.80	167.21	4,287.6	270.40	-825.2	187.4	833.7	0.00	0.00	0.00
4,500.0	15.80	167.21	4,383.8	174.18	-851.8	193.4	860.6	0.00	0.00	0.00
4,600.0	15.80	167.21	4,480.0	77.96	-878.3	199.5	887.4	0.00	0.00	0.00
4,700.0	15.80	167.21	4,576.3	-18.26	-904.9	205.5	914.2	0.00	0.00	0.00
4,800.0	15.80	167.21	4,672.5	-114.49	-931.4	211.5	941.1	0.00	0.00	0.00
4,900.0	15.80	167.21	4,768.7	-210.71	-958.0	217.6	967.9	0.00	0.00	0.00
5,000.0	15.80	167.21	4,864.9	-306.93	-984.6	223.6	994.7	0.00	0.00	0.00

Planning Report



Database:	EDM 5000.1 Single User Db	Local Co-ordinate Reference:	Well NORTH PLATTE K31-O34-34HNB
Company:	BONANZA CREEK ENERGY INC.	TVD Reference:	KB-EST @ 4558.0usft (Original Well Elev)
Project:	WELD COUNTY, COLORADO (NAD 83)	MD Reference:	KB-EST @ 4558.0usft (Original Well Elev)
Site:	SE SW SEC. 27 T5N R63W 6th P.M.	North Reference:	True
Well:	NORTH PLATTE K31-O34-34HNB	Survey Calculation Method:	Minimum Curvature
Wellbore:	ORIGINAL WELLBORE		
Design:	PROOSAL #2		

Planned Survey

MD (usft)	Inc (°)	Azi (°)	TVD (usft)	SS (usft)	+N/-S (usft)	+E/-W (usft)	Vertical Section (usft)	Dogleg Rate (°/100usft)	Build Rate (°/100usft)	Turn Rate (°/100usft)
5,100.0	15.80	167.21	4,961.1	-403.15	-1,011.1	229.6	1,021.6	0.00	0.00	0.00
END OF TANGENT										
5,139.9	15.80	167.21	4,999.6	-441.55	-1,021.7	232.0	1,032.3	0.00	0.00	0.00
5,200.0	14.60	167.21	5,057.5	-499.53	-1,037.1	235.5	1,047.8	2.00	-2.00	0.00
5,300.0	12.60	167.21	5,154.7	-596.73	-1,060.0	240.7	1,070.9	2.00	-2.00	0.00
5,400.0	10.60	167.21	5,252.7	-694.68	-1,079.6	245.2	1,090.8	2.00	-2.00	0.00
5,500.0	8.60	167.21	5,351.3	-793.27	-1,095.9	248.9	1,107.2	2.00	-2.00	0.00
5,600.0	6.60	167.21	5,450.4	-892.39	-1,108.8	251.8	1,120.2	2.00	-2.00	0.00
5,700.0	4.60	167.21	5,549.9	-991.91	-1,118.3	254.0	1,129.8	2.00	-2.00	0.00
5,800.0	2.60	167.21	5,649.7	-1,091.70	-1,124.4	255.3	1,136.0	2.00	-2.00	0.00
5,900.0	0.60	167.21	5,749.7	-1,191.66	-1,127.1	256.0	1,138.8	2.00	-2.00	0.00
EOD TO VERTICAL										
5,930.0	0.00	0.00	5,779.7	-1,221.70	-1,127.3	256.0	1,138.9	2.00	-2.00	0.00
KOP (12°/100ft BUR)										
5,960.0	0.00	0.00	5,809.7	-1,251.70	-1,127.3	256.0	1,138.9	0.00	0.00	0.00
6,000.0	4.80	179.40	5,849.6	-1,291.61	-1,129.0	256.0	1,140.6	12.00	12.00	0.00
6,100.0	16.80	179.40	5,947.7	-1,389.66	-1,147.7	256.2	1,159.3	12.00	12.00	0.00
6,200.0	28.80	179.40	6,039.7	-1,481.68	-1,186.3	256.6	1,197.9	12.00	12.00	0.00
6,300.0	40.80	179.40	6,121.7	-1,563.65	-1,243.3	257.2	1,254.8	12.00	12.00	0.00
6,400.0	52.80	179.40	6,190.0	-1,631.99	-1,316.0	258.0	1,327.5	12.00	12.00	0.00
6,500.0	64.80	179.40	6,241.7	-1,683.71	-1,401.4	258.9	1,412.8	12.00	12.00	0.00
START OF TANGENT										
6,585.0	75.00	179.40	6,270.9	-1,712.90	-1,481.2	259.7	1,492.5	12.00	12.00	0.00
6,600.0	75.00	179.40	6,274.8	-1,716.77	-1,495.6	259.9	1,507.0	0.00	0.00	0.00
END OF TANGENT										
6,685.0	75.00	179.40	6,296.8	-1,738.78	-1,577.8	260.7	1,589.0	0.00	0.00	0.00
6,700.0	76.80	179.40	6,300.4	-1,742.42	-1,592.3	260.9	1,603.5	12.00	12.00	0.00
6,800.0	88.80	179.40	6,312.9	-1,754.94	-1,691.3	261.9	1,702.5	12.00	12.00	0.00
7" ICP - NORTH PLATTE K31-O34-34HNB										
6,810.0	90.00	179.40	6,313.0	-1,755.05	-1,701.3	262.0	1,712.5	12.00	12.00	0.00
6,900.0	90.00	179.40	6,313.0	-1,755.05	-1,791.3	263.0	1,802.4	0.00	0.00	0.00
7,000.0	90.00	179.40	6,313.0	-1,755.05	-1,891.3	264.0	1,902.3	0.00	0.00	0.00
7,100.0	90.00	179.40	6,313.0	-1,755.05	-1,991.3	265.0	2,002.2	0.00	0.00	0.00
7,200.0	90.00	179.40	6,313.0	-1,755.05	-2,091.3	266.1	2,102.1	0.00	0.00	0.00
7,300.0	90.00	179.40	6,313.0	-1,755.05	-2,191.3	267.1	2,202.1	0.00	0.00	0.00
7,400.0	90.00	179.40	6,313.0	-1,755.05	-2,291.3	268.2	2,302.0	0.00	0.00	0.00
7,500.0	90.00	179.40	6,313.0	-1,755.05	-2,391.2	269.2	2,401.9	0.00	0.00	0.00
7,600.0	90.00	179.40	6,313.0	-1,755.05	-2,491.2	270.3	2,501.8	0.00	0.00	0.00
7,700.0	90.00	179.40	6,313.0	-1,755.04	-2,591.2	271.3	2,601.7	0.00	0.00	0.00
7,800.0	90.00	179.40	6,313.0	-1,755.04	-2,691.2	272.4	2,701.6	0.00	0.00	0.00
7,900.0	90.00	179.40	6,313.0	-1,755.04	-2,791.2	273.4	2,801.6	0.00	0.00	0.00
8,000.0	90.00	179.40	6,313.0	-1,755.04	-2,891.2	274.5	2,901.5	0.00	0.00	0.00
8,100.0	90.00	179.40	6,313.0	-1,755.04	-2,991.2	275.5	3,001.4	0.00	0.00	0.00
8,200.0	90.00	179.40	6,313.0	-1,755.04	-3,091.2	276.5	3,101.3	0.00	0.00	0.00
8,300.0	90.00	179.40	6,313.0	-1,755.04	-3,191.2	277.6	3,201.2	0.00	0.00	0.00
8,400.0	90.00	179.40	6,313.0	-1,755.04	-3,291.2	278.6	3,301.1	0.00	0.00	0.00
8,500.0	90.00	179.40	6,313.0	-1,755.04	-3,391.2	279.7	3,401.1	0.00	0.00	0.00
8,600.0	90.00	179.40	6,313.0	-1,755.04	-3,491.2	280.7	3,501.0	0.00	0.00	0.00
8,700.0	90.00	179.40	6,313.0	-1,755.04	-3,591.2	281.8	3,600.9	0.00	0.00	0.00
8,800.0	90.00	179.40	6,313.0	-1,755.04	-3,691.2	282.8	3,700.8	0.00	0.00	0.00
8,900.0	90.00	179.40	6,313.0	-1,755.04	-3,791.2	283.8	3,800.7	0.00	0.00	0.00
9,000.0	90.00	179.40	6,313.0	-1,755.03	-3,891.2	284.9	3,900.6	0.00	0.00	0.00
9,100.0	90.00	179.40	6,313.0	-1,755.03	-3,991.2	285.9	4,000.6	0.00	0.00	0.00

Planning Report



Database:	EDM 5000.1 Single User Db	Local Co-ordinate Reference:	Well NORTH PLATTE K31-O34-34HNB
Company:	BONANZA CREEK ENERGY INC.	TVD Reference:	KB-EST @ 4558.0usft (Original Well Elev)
Project:	WELD COUNTY, COLORADO (NAD 83)	MD Reference:	KB-EST @ 4558.0usft (Original Well Elev)
Site:	SE SW SEC. 27 T5N R63W 6th P.M.	North Reference:	True
Well:	NORTH PLATTE K31-O34-34HNB	Survey Calculation Method:	Minimum Curvature
Wellbore:	ORIGINAL WELLBORE		
Design:	PROOSAL #2		

Planned Survey										
MD (usft)	Inc (°)	Azi (°)	TVD (usft)	SS (usft)	+N/-S (usft)	+E/-W (usft)	Vertical Section (usft)	Dogleg Rate (°/100usft)	Build Rate (°/100usft)	Turn Rate (°/100usft)
9,200.0	90.00	179.40	6,313.0	-1,755.03	-4,091.2	287.0	4,100.5	0.00	0.00	0.00
9,300.0	90.00	179.40	6,313.0	-1,755.03	-4,191.1	288.0	4,200.4	0.00	0.00	0.00
9,400.0	90.00	179.40	6,313.0	-1,755.03	-4,291.1	289.1	4,300.3	0.00	0.00	0.00
9,500.0	90.00	179.40	6,313.0	-1,755.03	-4,391.1	290.1	4,400.2	0.00	0.00	0.00
9,600.0	90.00	179.40	6,313.0	-1,755.03	-4,491.1	291.1	4,500.2	0.00	0.00	0.00
9,700.0	90.00	179.40	6,313.0	-1,755.03	-4,591.1	292.2	4,600.1	0.00	0.00	0.00
9,800.0	90.00	179.40	6,313.0	-1,755.02	-4,691.1	293.2	4,700.0	0.00	0.00	0.00
9,900.0	90.00	179.40	6,313.0	-1,755.02	-4,791.1	294.3	4,799.9	0.00	0.00	0.00
10,000.0	90.00	179.40	6,313.0	-1,755.02	-4,891.1	295.3	4,899.8	0.00	0.00	0.00
10,100.0	90.00	179.40	6,313.0	-1,755.02	-4,991.1	296.3	4,999.7	0.00	0.00	0.00
10,200.0	90.00	179.40	6,313.0	-1,755.02	-5,091.1	297.4	5,099.6	0.00	0.00	0.00
10,300.0	90.00	179.40	6,313.0	-1,755.02	-5,191.1	298.4	5,199.6	0.00	0.00	0.00
10,400.0	90.00	179.40	6,313.0	-1,755.01	-5,291.1	299.5	5,299.5	0.00	0.00	0.00
10,500.0	90.00	179.40	6,313.0	-1,755.01	-5,391.1	300.5	5,399.4	0.00	0.00	0.00
10,600.0	90.00	179.40	6,313.0	-1,755.01	-5,491.1	301.5	5,499.3	0.00	0.00	0.00
10,700.0	90.00	179.40	6,313.0	-1,755.01	-5,591.1	302.6	5,599.2	0.00	0.00	0.00
10,800.0	90.00	179.41	6,313.0	-1,755.01	-5,691.1	303.6	5,699.1	0.00	0.00	0.00
10,900.0	90.00	179.41	6,313.0	-1,755.00	-5,791.1	304.7	5,799.1	0.00	0.00	0.00
11,000.0	90.00	179.41	6,313.0	-1,755.00	-5,891.1	305.7	5,899.0	0.00	0.00	0.00
BHL - NORH PLATTE K31-O34-34HNB										
11,087.2	90.00	179.41	6,313.0	-1,755.00	-5,978.3	306.6	5,986.2	0.00	0.00	0.00

Plan Annotations					
MD (usft)	TVD (usft)	Local Coordinates		Comment	
		+N/-S (usft)	+E/-W (usft)		
900.0	900.0	0.0	0.0	START NUDGE (2°/100ft BUR)	
1,690.1	1,680.1	-105.6	24.0	EOB TO 15.8° INC	
5,139.9	4,999.6	-1,021.7	232.0	END OF TANGENT	
5,930.0	5,779.7	-1,127.3	256.0	EOD TO VERTICAL	
5,960.0	5,809.7	-1,127.3	256.0	KOP (12°/100ft BUR)	
6,585.0	6,270.9	-1,481.2	259.7	START OF TANGENT	
6,685.0	6,296.8	-1,577.8	260.7	END OF TANGENT	
6,810.0	6,313.0	-1,701.3	262.0	7" ICP - NORTH PLATTE K31-O34-34HNB	
11,087.2	6,313.0	-5,978.3	306.6	BHL - NORH PLATTE K31-O34-34HNB	