

# **BONANZA CREEK ENERGY INC.**

**WELD COUNTY, COLORADO (NAD 83)**

**SE SW SEC. 27 T5N R63W 6th P.M.**

**NORTH PLATTE K21-O24-34HNC**

**ORIGINAL WELLBORE**

**23 April, 2015**

**Plan: PROPOSAL #2**





Project: WELD COUNTY, COLORADO (NAD 83)  
Site: SE SW SEC. 27 T5N R63W 6th P.M.  
Well: NORTH PLATTE K21-O24-34HNC  
Wellbore: ORIGINAL WELLBORE  
Design: PROPOSAL #2

ANNOTATIONS

TVD	MD	Inc	Azi	+N/-S	+E/-W	VSec	Dep	Annotation
800.0	800.0	0.00	0.00	0.0	0.0	0.0	0.0	START NUDGE (2°/100ft BUR)
1516.1	1523.7	14.47	185.74	-90.5	-9.1	90.6	90.9	EOB TO 14.47° INC
5129.6	5255.8	14.47	185.74	-1018.6	-102.4	1019.7	1023.8	END OF TANGENT
5845.7	5979.5	0.00	0.00	-1109.1	-111.5	1110.2	1114.7	EOD TO VERTICAL
5875.7	6009.5	0.00	0.00	-1109.1	-111.5	1110.2	1114.7	KOP (12°/100ft BUR)
6336.9	6634.5	75.00	179.44	-1463.0	-108.0	1464.0	1468.6	START OF TANGENT
6362.8	6734.5	75.00	179.44	-1559.6	-107.1	1560.6	1565.2	END OF TANGENT
6379.0	6859.5	90.00	179.44	-1683.1	-105.9	1684.2	1688.7	7" ICP - NORTH PLATTE K21-O24-34HNC
6379.0	11136.7	90.00	179.44	-5960.1	-64.1	5960.4	5965.9	BHL - NORTH PLATTE K21-O24-34HNC

PROPOSED LOCAL COORDINATES:

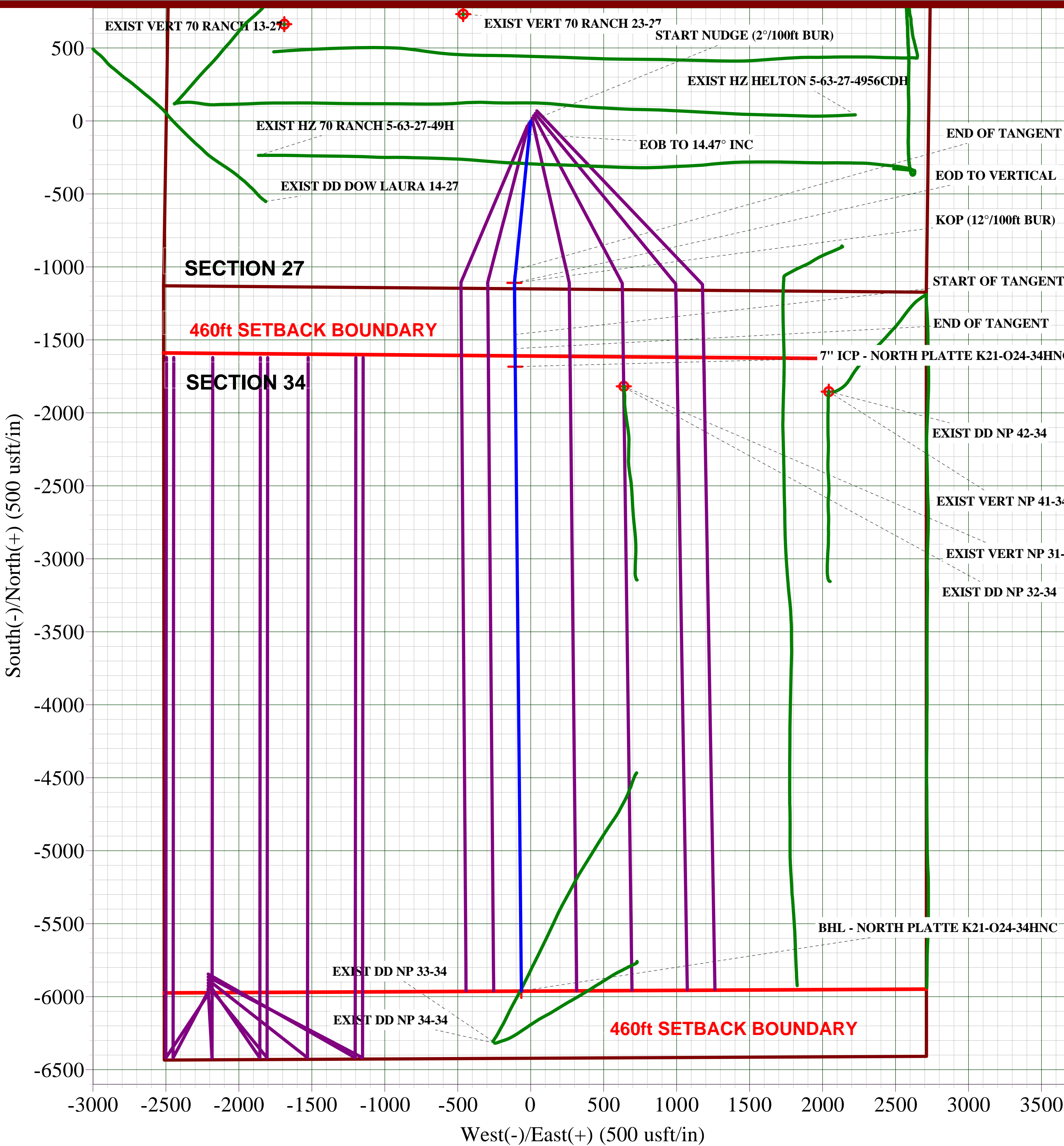
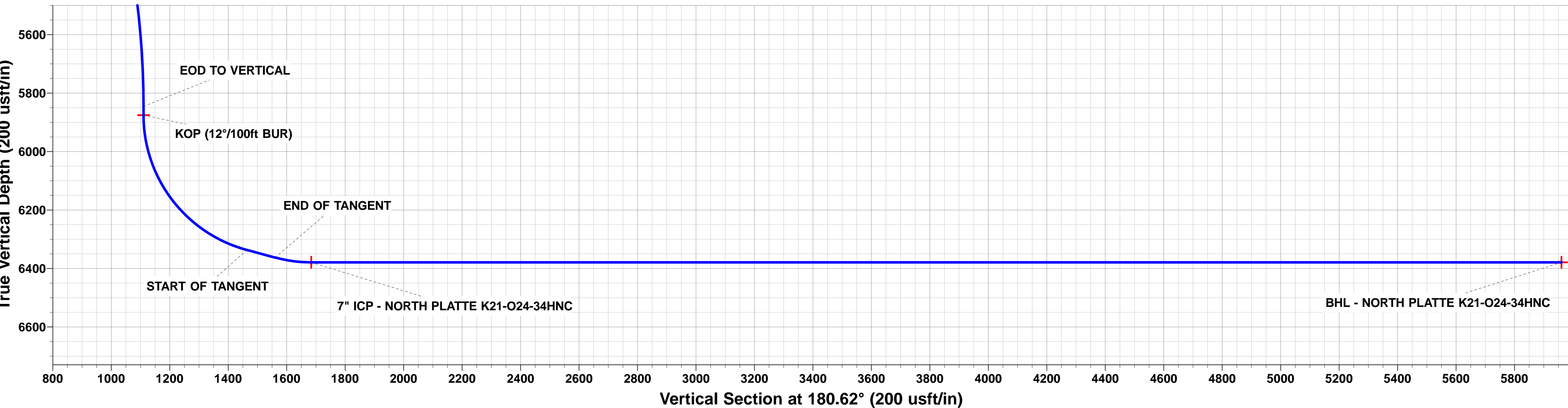
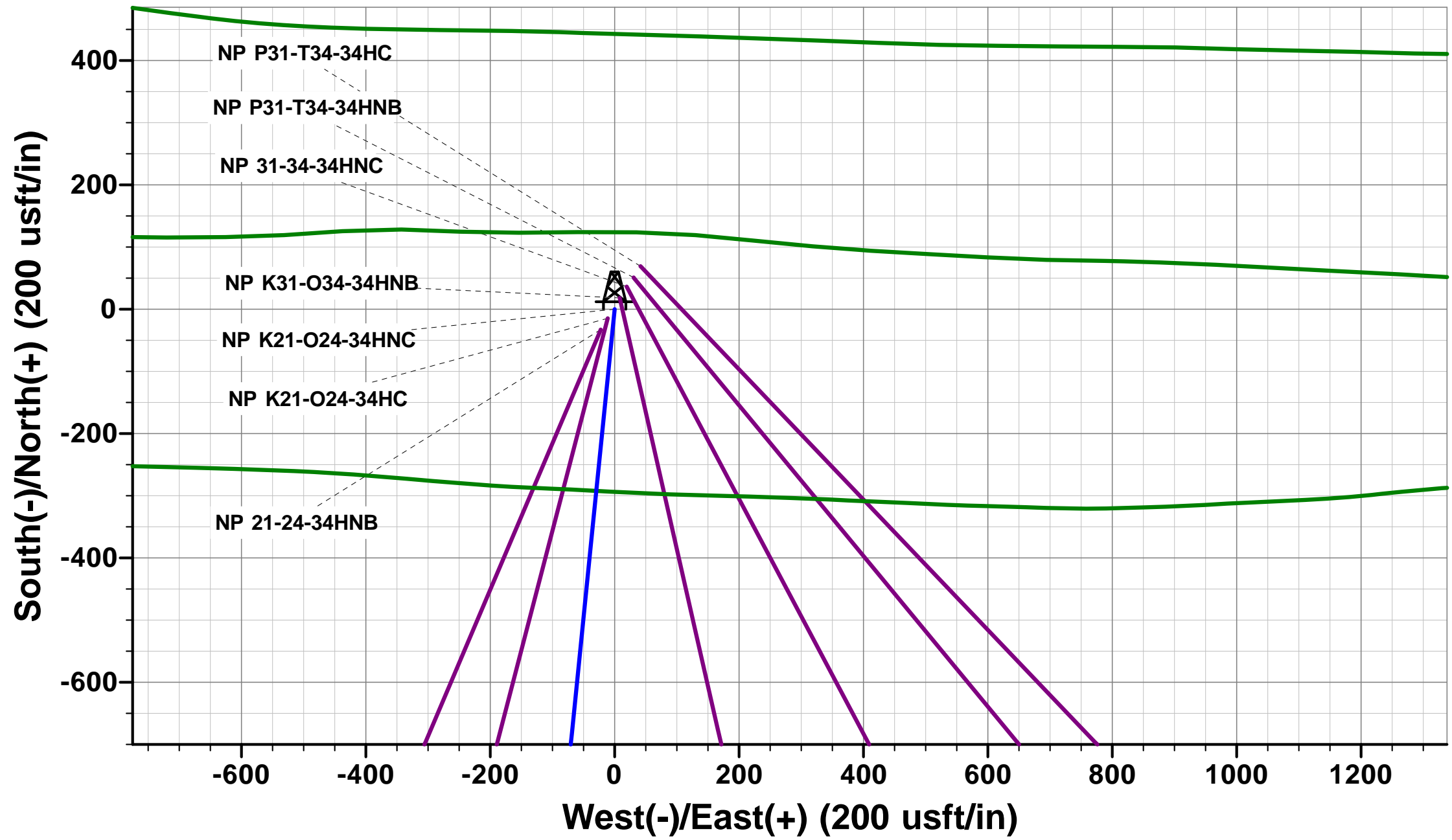
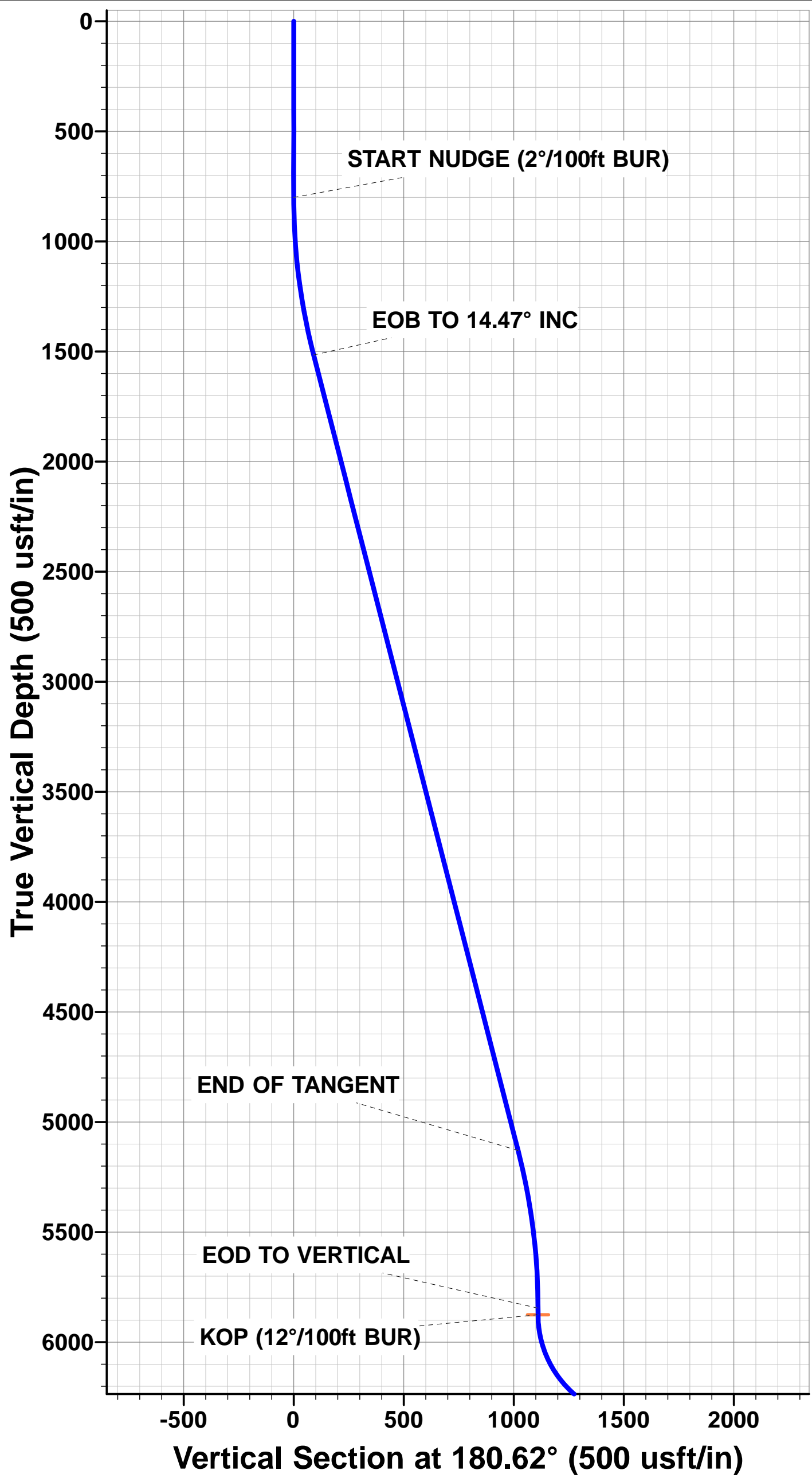
SHL: 1153ft FSL & 2473ft FWL Sec 27

7" ICP : 531ft FNL & 2409ft FWL Sec 34

BHL: 470ft FSL & 2446ft FWL Sec 34

WELLBORE TARGET DETAILS (LAT/LONG)

Name	TVD	+N/-S	+E/-W	Latitude	Longitude
KOP - NORTH PLATTE K21-O24-34HNC	5875.7	-1109.1	-111.5	40.363336	-104.422800
7" ICP - NORTH PLATTE K21-O24-34HNC	6379.0	-1683.1	-105.9	40.361760	-104.422780
BHL - NORTH PLATTE K21-O24-34HNC	6379.0	-5960.1	-64.1	40.350020	-104.422630



# Planning Report



<b>Database:</b>	EDM 5000.1 Single User Db	<b>Local Co-ordinate Reference:</b>	Well NORTH PLATTE K21-O24-34HNC
<b>Company:</b>	BONANZA CREEK ENERGY INC.	<b>TVD Reference:</b>	KB-EST @ 4559.0usft (Original Well Elev)
<b>Project:</b>	WELD COUNTY, COLORADO (NAD 83)	<b>MD Reference:</b>	KB-EST @ 4559.0usft (Original Well Elev)
<b>Site:</b>	SE SW SEC. 27 T5N R63W 6th P.M.	<b>North Reference:</b>	True
<b>Well:</b>	NORTH PLATTE K21-O24-34HNC	<b>Survey Calculation Method:</b>	Minimum Curvature
<b>Wellbore:</b>	ORIGINAL WELLBORE		
<b>Design:</b>	PROPOSAL #2		

<b>Project</b>	WELD COUNTY, COLORADO (NAD 83)		
<b>Map System:</b>	US State Plane 1983	<b>System Datum:</b>	Mean Sea Level
<b>Geo Datum:</b>	North American Datum 1983		
<b>Map Zone:</b>	Colorado Northern Zone		Using geodetic scale factor

<b>Site</b>	SE SW SEC. 27 T5N R63W 6th P.M.		
<b>Site Position:</b>		<b>Northing:</b>	1,378,104.19 usft
<b>From:</b>	Lat/Long	<b>Easting:</b>	3,300,242.31 usft
<b>Position Uncertainty:</b>	0.0 usft	<b>Slot Radius:</b>	1.10000ft
		<b>Latitude:</b>	40.366290
		<b>Longitude:</b>	-104.422480
		<b>Grid Convergence:</b>	0.70 °

<b>Well</b>	NORTH PLATTE K21-O24-34HNC		
<b>Well Position</b>	<b>+N-S</b>	32.8 usft	<b>Northing:</b>
	<b>+E-W</b>	22.3 usft	<b>Easting:</b>
<b>Position Uncertainty</b>		0.0 usft	<b>Wellhead Elevation:</b>
			<b>Latitude:</b>
			<b>Longitude:</b>
			<b>Ground Level:</b>

<b>Wellbore</b>	ORIGINAL WELLBORE				
<b>Magnetics</b>	<b>Model Name</b>	<b>Sample Date</b>	<b>Declination (°)</b>	<b>Dip Angle (°)</b>	<b>Field Strength (nT)</b>
	IGRF2015	23/04/2015	8.25	66.94	52,659

<b>Design</b>	PROPOSAL #2			
<b>Audit Notes:</b>				
<b>Version:</b>	<b>Phase:</b>	PROTOTYPE	<b>Tie On Depth:</b>	0.0
<b>Vertical Section:</b>	<b>Depth From (TVD) (usft)</b>	<b>+N-S (usft)</b>	<b>+E-W (usft)</b>	<b>Direction (°)</b>
	6,379.0	0.0	0.0	180.62

<b>Plan Sections</b>											
MD (usft)	Inc (°)	Azi (°)	Vertical Depth	SS (usft)	+N-S (usft)	+E-W (usft)	Dogleg Rate (°/100usf)	Build Rate (°/100usf)	Turn Rate (°/100usf)	TFO (°)	Target
0.0	0.00	0.00	0.0	-4,559.0	0.0	0.0	0.00	0.00	0.00	0.00	
800.0	0.00	0.00	800.0	-3,759.0	0.0	0.0	0.00	0.00	0.00	0.00	
1,523.7	14.47	185.74	1,516.1	-3,042.9	-90.5	-9.1	2.00	2.00	0.00	185.74	
5,255.8	14.47	185.74	5,129.6	570.6	-1,018.6	-102.4	0.00	0.00	0.00	0.00	
5,979.5	0.00	0.00	5,845.7	1,286.7	-1,109.1	-111.5	2.00	-2.00	0.00	180.00	
6,009.5	0.00	0.00	5,875.7	1,316.7	-1,109.1	-111.5	0.00	0.00	0.00	0.00	KOP - NORTH PLA
6,634.5	75.00	179.44	6,336.9	1,777.9	-1,463.0	-108.0	12.00	12.00	0.00	179.44	
6,734.5	75.00	179.44	6,362.8	1,803.8	-1,559.6	-107.1	0.00	0.00	0.00	0.00	
6,859.5	90.00	179.44	6,379.0	1,820.0	-1,683.1	-105.9	12.00	12.00	0.00	0.00	
11,136.7	90.00	179.44	6,379.0	1,820.0	-5,960.1	-64.1	0.00	0.00	0.00	0.00	BHL - NORTH PLA

# Planning Report



<b>Database:</b>	EDM 5000.1 Single User Db	<b>Local Co-ordinate Reference:</b>	Well NORTH PLATTE K21-O24-34HNC
<b>Company:</b>	BONANZA CREEK ENERGY INC.	<b>TVD Reference:</b>	KB-EST @ 4559.0usft (Original Well Elev)
<b>Project:</b>	WELD COUNTY, COLORADO (NAD 83)	<b>MD Reference:</b>	KB-EST @ 4559.0usft (Original Well Elev)
<b>Site:</b>	SE SW SEC. 27 T5N R63W 6th P.M.	<b>North Reference:</b>	True
<b>Well:</b>	NORTH PLATTE K21-O24-34HNC	<b>Survey Calculation Method:</b>	Minimum Curvature
<b>Wellbore:</b>	ORIGINAL WELLBORE		
<b>Design:</b>	PROPOSAL #2		

## Planned Survey

MD (usft)	Inc (°)	Azi (°)	TVD (usft)	SS (usft)	+N/-S (usft)	+E/-W (usft)	Vertical Section (usft)	Dogleg Rate (°/100usft)	Build Rate (°/100usft)	Turn Rate (°/100usft)
0.0	0.00	0.00	0.0	4,559.00	0.0	0.0	0.0	0.00	0.00	0.00
100.0	0.00	0.00	100.0	4,459.00	0.0	0.0	0.0	0.00	0.00	0.00
200.0	0.00	0.00	200.0	4,359.00	0.0	0.0	0.0	0.00	0.00	0.00
300.0	0.00	0.00	300.0	4,259.00	0.0	0.0	0.0	0.00	0.00	0.00
400.0	0.00	0.00	400.0	4,159.00	0.0	0.0	0.0	0.00	0.00	0.00
500.0	0.00	0.00	500.0	4,059.00	0.0	0.0	0.0	0.00	0.00	0.00
600.0	0.00	0.00	600.0	3,959.00	0.0	0.0	0.0	0.00	0.00	0.00
700.0	0.00	0.00	700.0	3,859.00	0.0	0.0	0.0	0.00	0.00	0.00
<b>START NUDGE (2°/100ft BUR)</b>										
800.0	0.00	0.00	800.0	3,759.00	0.0	0.0	0.0	0.00	0.00	0.00
900.0	2.00	185.74	900.0	3,659.02	-1.7	-0.2	1.7	2.00	2.00	0.00
1,000.0	4.00	185.74	999.8	3,559.16	-6.9	-0.7	7.0	2.00	2.00	0.00
1,100.0	6.00	185.74	1,099.5	3,459.55	-15.6	-1.6	15.6	2.00	2.00	0.00
1,200.0	8.00	185.74	1,198.7	3,360.30	-27.7	-2.8	27.8	2.00	2.00	0.00
1,300.0	10.00	185.74	1,297.5	3,261.53	-43.3	-4.4	43.3	2.00	2.00	0.00
1,400.0	12.00	185.74	1,395.6	3,163.38	-62.3	-6.3	62.4	2.00	2.00	0.00
1,500.0	14.00	185.74	1,493.1	3,065.94	-84.7	-8.5	84.8	2.00	2.00	0.00
<b>EOB TO 14.47° INC</b>										
1,523.7	14.47	185.74	1,516.1	3,042.95	-90.5	-9.1	90.6	2.00	2.00	0.00
1,600.0	14.47	185.74	1,589.9	2,969.09	-109.4	-11.0	109.6	0.00	0.00	0.00
1,700.0	14.47	185.74	1,686.7	2,872.27	-134.3	-13.5	134.5	0.00	0.00	0.00
1,800.0	14.47	185.74	1,783.6	2,775.44	-159.2	-16.0	159.3	0.00	0.00	0.00
1,900.0	14.47	185.74	1,880.4	2,678.62	-184.1	-18.5	184.2	0.00	0.00	0.00
2,000.0	14.47	185.74	1,977.2	2,581.79	-208.9	-21.0	209.1	0.00	0.00	0.00
2,100.0	14.47	185.74	2,074.0	2,484.97	-233.8	-23.5	234.0	0.00	0.00	0.00
2,200.0	14.47	185.74	2,170.9	2,388.14	-258.7	-26.0	258.9	0.00	0.00	0.00
2,300.0	14.47	185.74	2,267.7	2,291.31	-283.5	-28.5	283.8	0.00	0.00	0.00
2,400.0	14.47	185.74	2,364.5	2,194.49	-308.4	-31.0	308.7	0.00	0.00	0.00
2,500.0	14.47	185.74	2,461.3	2,097.66	-333.3	-33.5	333.6	0.00	0.00	0.00
2,600.0	14.47	185.74	2,558.2	2,000.84	-358.1	-36.0	358.5	0.00	0.00	0.00
2,700.0	14.47	185.74	2,655.0	1,904.01	-383.0	-38.5	383.4	0.00	0.00	0.00
2,800.0	14.47	185.74	2,751.8	1,807.18	-407.9	-41.0	408.3	0.00	0.00	0.00
2,900.0	14.47	185.74	2,848.6	1,710.36	-432.7	-43.5	433.2	0.00	0.00	0.00
3,000.0	14.47	185.74	2,945.5	1,613.53	-457.6	-46.0	458.1	0.00	0.00	0.00
3,100.0	14.47	185.74	3,042.3	1,516.71	-482.5	-48.5	483.0	0.00	0.00	0.00
3,200.0	14.47	185.74	3,139.1	1,419.88	-507.4	-51.0	507.9	0.00	0.00	0.00
3,300.0	14.47	185.74	3,235.9	1,323.05	-532.2	-53.5	532.8	0.00	0.00	0.00
3,400.0	14.47	185.74	3,332.8	1,226.23	-557.1	-56.0	557.7	0.00	0.00	0.00
3,500.0	14.47	185.74	3,429.6	1,129.40	-582.0	-58.5	582.6	0.00	0.00	0.00
3,600.0	14.47	185.74	3,526.4	1,032.58	-606.8	-61.0	607.5	0.00	0.00	0.00
3,700.0	14.47	185.74	3,623.2	935.75	-631.7	-63.5	632.4	0.00	0.00	0.00
3,800.0	14.47	185.74	3,720.1	838.93	-656.6	-66.0	657.2	0.00	0.00	0.00
3,900.0	14.47	185.74	3,816.9	742.10	-681.4	-68.5	682.1	0.00	0.00	0.00
4,000.0	14.47	185.74	3,913.7	645.27	-706.3	-71.0	707.0	0.00	0.00	0.00
4,100.0	14.47	185.74	4,010.6	548.45	-731.2	-73.5	731.9	0.00	0.00	0.00
4,200.0	14.47	185.74	4,107.4	451.62	-756.1	-76.0	756.8	0.00	0.00	0.00
4,300.0	14.47	185.74	4,204.2	354.80	-780.9	-78.5	781.7	0.00	0.00	0.00
4,400.0	14.47	185.74	4,301.0	257.97	-805.8	-81.0	806.6	0.00	0.00	0.00
4,500.0	14.47	185.74	4,397.9	161.14	-830.7	-83.5	831.5	0.00	0.00	0.00
4,600.0	14.47	185.74	4,494.7	64.32	-855.5	-86.0	856.4	0.00	0.00	0.00
4,700.0	14.47	185.74	4,591.5	-32.51	-880.4	-88.5	881.3	0.00	0.00	0.00
4,800.0	14.47	185.74	4,688.3	-129.33	-905.3	-91.0	906.2	0.00	0.00	0.00
4,900.0	14.47	185.74	4,785.2	-226.16	-930.1	-93.5	931.1	0.00	0.00	0.00
5,000.0	14.47	185.74	4,882.0	-322.99	-955.0	-96.0	956.0	0.00	0.00	0.00

# Planning Report



<b>Database:</b>	EDM 5000.1 Single User Db	<b>Local Co-ordinate Reference:</b>	Well NORTH PLATTE K21-O24-34HNC
<b>Company:</b>	BONANZA CREEK ENERGY INC.	<b>TVD Reference:</b>	KB-EST @ 4559.0usft (Original Well Elev)
<b>Project:</b>	WELD COUNTY, COLORADO (NAD 83)	<b>MD Reference:</b>	KB-EST @ 4559.0usft (Original Well Elev)
<b>Site:</b>	SE SW SEC. 27 T5N R63W 6th P.M.	<b>North Reference:</b>	True
<b>Well:</b>	NORTH PLATTE K21-O24-34HNC	<b>Survey Calculation Method:</b>	Minimum Curvature
<b>Wellbore:</b>	ORIGINAL WELLBORE		
<b>Design:</b>	PROPOSAL #2		

## Planned Survey

MD (usft)	Inc (°)	Azi (°)	TVD (usft)	SS (usft)	+N/-S (usft)	+E/-W (usft)	Vertical Section (usft)	Dogleg Rate (°/100usft)	Build Rate (°/100usft)	Turn Rate (°/100usft)
5,100.0	14.47	185.74	4,978.8	-419.81	-979.9	-98.5	980.9	0.00	0.00	0.00
5,200.0	14.47	185.74	5,075.6	-516.64	-1,004.8	-101.0	1,005.8	0.00	0.00	0.00
<b>END OF TANGENT</b>										
<b>5,255.8</b>	<b>14.47</b>	<b>185.74</b>	<b>5,129.6</b>	<b>-570.65</b>	<b>-1,018.6</b>	<b>-102.4</b>	<b>1,019.7</b>	<b>0.00</b>	<b>0.00</b>	<b>0.00</b>
5,300.0	13.59	185.74	5,172.5	-613.55	-1,029.3	-103.5	1,030.3	2.00	-2.00	0.00
5,400.0	11.59	185.74	5,270.1	-711.14	-1,051.0	-105.7	1,052.1	2.00	-2.00	0.00
5,500.0	9.59	185.74	5,368.4	-809.43	-1,069.3	-107.5	1,070.4	2.00	-2.00	0.00
5,600.0	7.59	185.74	5,467.3	-908.30	-1,084.1	-109.0	1,085.2	2.00	-2.00	0.00
5,700.0	5.59	185.74	5,566.6	-1,007.64	-1,095.5	-110.1	1,096.7	2.00	-2.00	0.00
5,800.0	3.59	185.74	5,666.3	-1,107.31	-1,103.5	-110.9	1,104.6	2.00	-2.00	0.00
5,900.0	1.59	185.74	5,766.2	-1,207.20	-1,108.0	-111.4	1,109.1	2.00	-2.00	0.00
<b>EOD TO VERTICAL</b>										
<b>5,979.5</b>	<b>0.00</b>	<b>0.00</b>	<b>5,845.7</b>	<b>-1,286.70</b>	<b>-1,109.1</b>	<b>-111.5</b>	<b>1,110.2</b>	<b>2.00</b>	<b>-2.00</b>	<b>0.00</b>
6,000.0	0.00	0.00	5,866.2	-1,307.19	-1,109.1	-111.5	1,110.2	0.00	0.00	0.00
<b>KOP (12°/100ft BUR)</b>										
<b>6,009.5</b>	<b>0.00</b>	<b>0.00</b>	<b>5,875.7</b>	<b>-1,316.70</b>	<b>-1,109.1</b>	<b>-111.5</b>	<b>1,110.2</b>	<b>0.00</b>	<b>0.00</b>	<b>0.00</b>
6,100.0	10.86	179.44	5,965.7	-1,406.65	-1,117.6	-111.4	1,118.8	12.00	12.00	0.00
6,200.0	22.86	179.44	6,061.2	-1,502.18	-1,146.6	-111.1	1,147.7	12.00	12.00	0.00
6,300.0	34.86	179.44	6,148.6	-1,589.60	-1,194.8	-110.7	1,195.9	12.00	12.00	0.00
6,400.0	46.86	179.44	6,224.1	-1,665.09	-1,260.1	-110.0	1,261.2	12.00	12.00	0.00
6,500.0	58.86	179.44	6,284.4	-1,725.36	-1,339.6	-109.2	1,340.7	12.00	12.00	0.00
6,600.0	70.86	179.44	6,326.8	-1,767.77	-1,430.0	-108.4	1,431.1	12.00	12.00	0.00
<b>START OF TANGENT</b>										
<b>6,634.5</b>	<b>75.00</b>	<b>179.44</b>	<b>6,336.9</b>	<b>-1,777.90</b>	<b>-1,463.0</b>	<b>-108.0</b>	<b>1,464.0</b>	<b>12.00</b>	<b>12.00</b>	<b>0.00</b>
6,700.0	75.00	179.44	6,353.8	-1,794.85	-1,526.2	-107.4	1,527.3	0.00	0.00	0.00
<b>END OF TANGENT</b>										
<b>6,734.5</b>	<b>75.00</b>	<b>179.44</b>	<b>6,362.8</b>	<b>-1,803.78</b>	<b>-1,559.6</b>	<b>-107.1</b>	<b>1,560.6</b>	<b>0.00</b>	<b>0.00</b>	<b>0.00</b>
6,800.0	82.86	179.44	6,375.3	-1,816.34	-1,623.8	-106.5	1,624.8	12.00	12.00	0.00
<b>7" ICP - NORTH PLATTE K21-O24-34HNC</b>										
<b>6,859.5</b>	<b>90.00</b>	<b>179.44</b>	<b>6,379.0</b>	<b>-1,820.05</b>	<b>-1,683.1</b>	<b>-105.9</b>	<b>1,684.2</b>	<b>12.00</b>	<b>12.00</b>	<b>0.00</b>
6,900.0	90.00	179.44	6,379.0	-1,820.05	-1,723.6	-105.5	1,724.7	0.00	0.00	0.00
7,000.0	90.00	179.44	6,379.0	-1,820.05	-1,823.6	-104.5	1,824.6	0.00	0.00	0.00
7,100.0	90.00	179.44	6,379.0	-1,820.05	-1,923.6	-103.5	1,924.6	0.00	0.00	0.00
7,200.0	90.00	179.44	6,379.0	-1,820.05	-2,023.6	-102.6	2,024.6	0.00	0.00	0.00
7,300.0	90.00	179.44	6,379.0	-1,820.05	-2,123.6	-101.6	2,124.6	0.00	0.00	0.00
7,400.0	90.00	179.44	6,379.0	-1,820.05	-2,223.6	-100.6	2,224.6	0.00	0.00	0.00
7,500.0	90.00	179.44	6,379.0	-1,820.05	-2,323.6	-99.6	2,324.5	0.00	0.00	0.00
7,600.0	90.00	179.44	6,379.0	-1,820.05	-2,423.6	-98.7	2,424.5	0.00	0.00	0.00
7,700.0	90.00	179.44	6,379.0	-1,820.05	-2,523.6	-97.7	2,524.5	0.00	0.00	0.00
7,800.0	90.00	179.44	6,379.0	-1,820.05	-2,623.6	-96.7	2,624.5	0.00	0.00	0.00
7,900.0	90.00	179.44	6,379.0	-1,820.05	-2,723.6	-95.7	2,724.4	0.00	0.00	0.00
8,000.0	90.00	179.44	6,379.0	-1,820.05	-2,823.6	-94.7	2,824.4	0.00	0.00	0.00
8,100.0	90.00	179.44	6,379.0	-1,820.05	-2,923.6	-93.8	2,924.4	0.00	0.00	0.00
8,200.0	90.00	179.44	6,379.0	-1,820.05	-3,023.6	-92.8	3,024.4	0.00	0.00	0.00
8,300.0	90.00	179.44	6,379.0	-1,820.05	-3,123.6	-91.8	3,124.4	0.00	0.00	0.00
8,400.0	90.00	179.44	6,379.0	-1,820.05	-3,223.5	-90.8	3,224.3	0.00	0.00	0.00
8,500.0	90.00	179.44	6,379.0	-1,820.05	-3,323.5	-89.9	3,324.3	0.00	0.00	0.00
8,600.0	90.00	179.44	6,379.0	-1,820.05	-3,423.5	-88.9	3,424.3	0.00	0.00	0.00
8,700.0	90.00	179.44	6,379.0	-1,820.05	-3,523.5	-87.9	3,524.3	0.00	0.00	0.00
8,800.0	90.00	179.44	6,379.0	-1,820.05	-3,623.5	-86.9	3,624.3	0.00	0.00	0.00
8,900.0	90.00	179.44	6,379.0	-1,820.05	-3,723.5	-85.9	3,724.2	0.00	0.00	0.00
9,000.0	90.00	179.44	6,379.0	-1,820.05	-3,823.5	-85.0	3,824.2	0.00	0.00	0.00
9,100.0	90.00	179.44	6,379.0	-1,820.05	-3,923.5	-84.0	3,924.2	0.00	0.00	0.00



# Planning Report



<b>Database:</b>	EDM 5000.1 Single User Db	<b>Local Co-ordinate Reference:</b>	Well NORTH PLATTE K21-O24-34HNC
<b>Company:</b>	BONANZA CREEK ENERGY INC.	<b>TVD Reference:</b>	KB-EST @ 4559.0usft (Original Well Elev)
<b>Project:</b>	WELD COUNTY, COLORADO (NAD 83)	<b>MD Reference:</b>	KB-EST @ 4559.0usft (Original Well Elev)
<b>Site:</b>	SE SW SEC. 27 T5N R63W 6th P.M.	<b>North Reference:</b>	True
<b>Well:</b>	NORTH PLATTE K21-O24-34HNC	<b>Survey Calculation Method:</b>	Minimum Curvature
<b>Wellbore:</b>	ORIGINAL WELLBORE		
<b>Design:</b>	PROPOSAL #2		

Planned Survey										
MD (usft)	Inc (°)	Azi (°)	TVD (usft)	SS (usft)	+N/-S (usft)	+E/-W (usft)	Vertical Section (usft)	Dogleg Rate (°/100usft)	Build Rate (°/100usft)	Turn Rate (°/100usft)
9,200.0	90.00	179.44	6,379.0	-1,820.05	-4,023.5	-83.0	4,024.2	0.00	0.00	0.00
9,300.0	90.00	179.44	6,379.0	-1,820.05	-4,123.5	-82.0	4,124.1	0.00	0.00	0.00
9,400.0	90.00	179.44	6,379.0	-1,820.05	-4,223.5	-81.1	4,224.1	0.00	0.00	0.00
9,500.0	90.00	179.44	6,379.0	-1,820.05	-4,323.5	-80.1	4,324.1	0.00	0.00	0.00
9,600.0	90.00	179.44	6,379.0	-1,820.05	-4,423.5	-79.1	4,424.1	0.00	0.00	0.00
9,700.0	90.00	179.44	6,379.0	-1,820.05	-4,523.5	-78.1	4,524.1	0.00	0.00	0.00
9,800.0	90.00	179.44	6,379.0	-1,820.05	-4,623.5	-77.1	4,624.0	0.00	0.00	0.00
9,900.0	90.00	179.44	6,379.0	-1,820.05	-4,723.5	-76.2	4,724.0	0.00	0.00	0.00
10,000.0	90.00	179.44	6,379.0	-1,820.05	-4,823.5	-75.2	4,824.0	0.00	0.00	0.00
10,100.0	90.00	179.44	6,379.0	-1,820.05	-4,923.5	-74.2	4,924.0	0.00	0.00	0.00
10,200.0	90.00	179.44	6,379.0	-1,820.05	-5,023.5	-73.2	5,024.0	0.00	0.00	0.00
10,300.0	90.00	179.44	6,379.0	-1,820.05	-5,123.5	-72.3	5,123.9	0.00	0.00	0.00
10,400.0	90.00	179.44	6,379.0	-1,820.05	-5,223.5	-71.3	5,223.9	0.00	0.00	0.00
10,500.0	90.00	179.44	6,379.0	-1,820.05	-5,323.4	-70.3	5,323.9	0.00	0.00	0.00
10,600.0	90.00	179.44	6,379.0	-1,820.05	-5,423.4	-69.3	5,423.9	0.00	0.00	0.00
10,700.0	90.00	179.44	6,379.0	-1,820.05	-5,523.4	-68.4	5,523.9	0.00	0.00	0.00
10,800.0	90.00	179.44	6,379.0	-1,820.05	-5,623.4	-67.4	5,623.8	0.00	0.00	0.00
10,900.0	90.00	179.44	6,379.0	-1,820.05	-5,723.4	-66.4	5,723.8	0.00	0.00	0.00
11,000.0	90.00	179.44	6,379.0	-1,820.05	-5,823.4	-65.4	5,823.8	0.00	0.00	0.00
11,100.0	90.00	179.44	6,379.0	-1,820.05	-5,923.4	-64.4	5,923.8	0.00	0.00	0.00
<b>BHL - NORTH PLATTE K21-O24-34HNC</b>										
<b>11,136.7</b>	<b>90.00</b>	<b>179.44</b>	<b>6,379.0</b>	<b>-1,820.00</b>	<b>-5,960.1</b>	<b>-64.1</b>	<b>5,960.4</b>	<b>0.00</b>	<b>0.00</b>	<b>0.00</b>

Plan Annotations				
MD (usft)	TVD (usft)	Local Coordinates		Comment
		+N/-S (usft)	+E/-W (usft)	
800.0	800.0	0.0	0.0	START NUDGE (2°/100ft BUR)
1,523.7	1,516.1	-90.5	-9.1	EOB TO 14.47° INC
5,255.8	5,129.6	-1,018.6	-102.4	END OF TANGENT
5,979.5	5,845.7	-1,109.1	-111.5	EOD TO VERTICAL
6,009.5	5,875.7	-1,109.1	-111.5	KOP (12°/100ft BUR)
6,634.5	6,336.9	-1,463.0	-108.0	START OF TANGENT
6,734.5	6,362.8	-1,559.6	-107.1	END OF TANGENT
6,859.5	6,379.0	-1,683.1	-105.9	7" ICP - NORTH PLATTE K21-O24-34HNC
11,136.7	6,379.0	-5,960.1	-64.1	BHL - NORTH PLATTE K21-O24-34HNC