

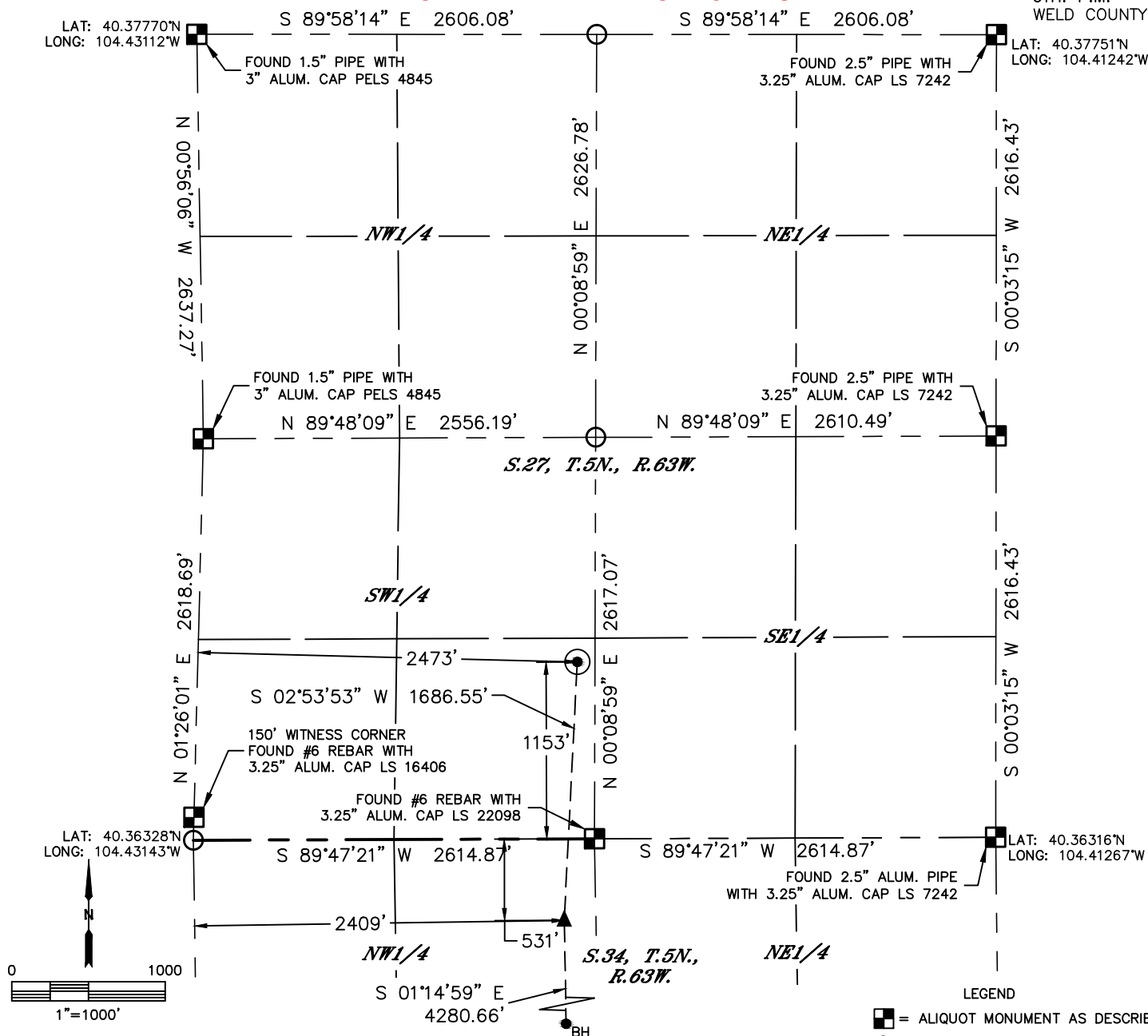


Lat40°, Inc. 6250 W. 10th Street, Unit 2, Greeley, CO 970-515-5294

WELL LOCATION CERTIFICATE

NORTH PLATTE K21-O24-34HNC

SECTION: 27
TOWNSHIP: 5N
RANGE: 63W
6TH. P.M.
WELD COUNTY, CO



CLIENT: BONANZA CREEK ENERGY			LANDMAN: ALEX NEWELL			
INSTRUMENT OPERATOR: ADAM BEAUPREZ			SURVEY DATE: 1/22/2015		SURFACE USE: RANGELAND	
SHL FOOTAGE	SHL LAT°	SHL LONG°	SHL PDOP	SHL ELEV	SHL 1/4/1/4	SHL S-T-R
1153 FSL 2473 FWL	40.36638	-104.42240	1.9	4542	SESW	27-5-63

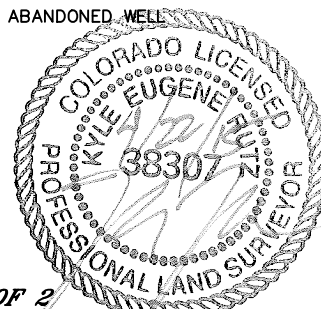
BHL FOOTAGE	BHL LAT°	BHL LONG°	BHL S-T-R	EP LAT°	EP LONG°	EP S-T-R
470 FSL 2446 FWL	40.35002	-104.42263	34-5-63	40.36176	-104.42278	34-5-63

NOTE:

- 1) Bearings shown are Grid Bearings of the Colorado State Plane Coordinate System, North Zone, North American Datum 1983. The lineal dimensions as contained herein are based upon the "U.S. Survey Foot."
- 2) Distances to section lines measured at 90 degrees from said section lines.
- 3) Ground elevations are based on an observed GPS elevation (NAVD 1988 DATUM).
- 4) Latitude and Longitude shown are (NAD 83 DATUM).
- 5) IMPROVEMENTS: See LOCATION DRAWING for all visible improvements within 500' of oil and gas location.
- 6) This map does not represent a boundary survey.

NEAREST CULTURAL ITEMS	
BUILDING	±1322' NW
BUILDING UNIT	±1322' NW
HIGH OCCUPANCY BUILDING UNIT	5280'+
DESIGNATED OUTSIDE ACTIVITY AREA	5280'+
PUBLIC ROAD (CR 69)	±3056' SE
ABOVE GROUND UTILITY	±559' NE
RAILROAD	5280'+
PROPERTY LINE	±451' E

- LEGEND
- = ALIQUOT MONUMENT AS DESCRIBED
 - = CALCULATED POSITION
 - = SURFACE HOLE LOCATION (SHL)
 - ▲ = ENTRY POINT LOCATION (EP)
 - BH = BOTTOM HOLE LOCATION (BHL)
 - ⊙ = EXISTING WELL
 - ⊙ = ABANDONED WELL



SHEET 1 OF 2

Kyle E. Rutz-On behalf of Lat40°, Inc.
Colorado Licensed Professional Land Surveyor No. 38307
DATE: rev4/22/2015
PROJECT#: 2014227



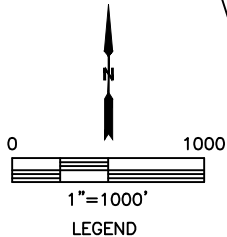
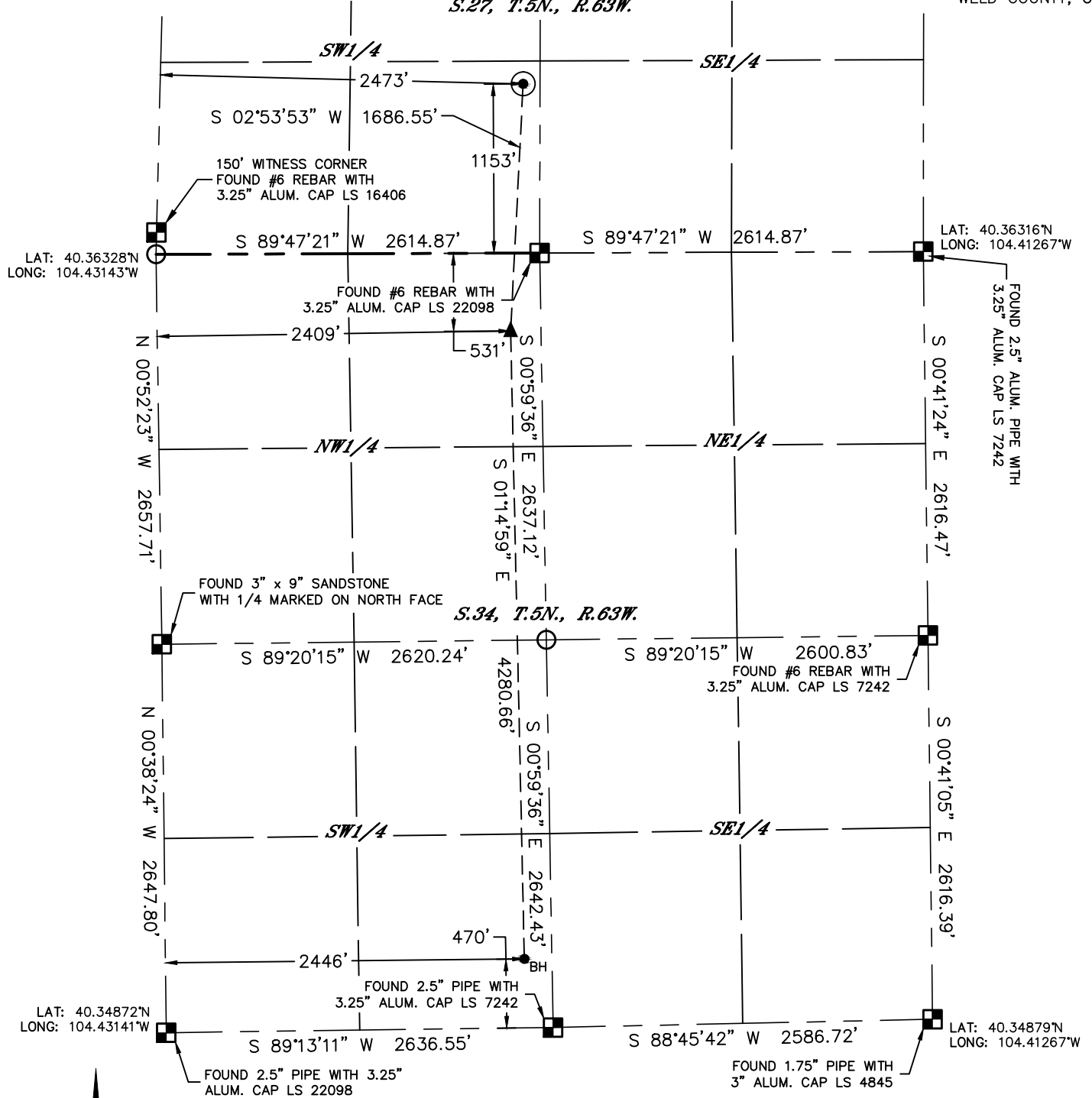
Lat40°, Inc. 6250 W. 10th Street, Unit 2, Greeley, CO 970-515-5294

WELL LOCATION CERTIFICATE

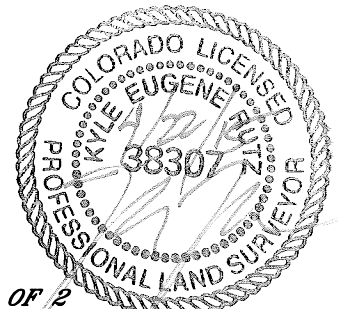
NORTH PLATTE K21-O24-34HNC

SECTION: 27
TOWNSHIP: 5N
RANGE: 63W
6TH. P.M.
WELD COUNTY, CO

S.27, T.5N., R.63W.



- LEGEND**
- = ALIQUOT MONUMENT AS DESCRIBED
 - = CALCULATED POSITION
 - = SURFACE HOLE LOCATION (SHL)
 - ▲ = ENTRY POINT LOCATION (EP)
 - _{BH} = BOTTOM HOLE LOCATION (BHL)



SHEET 2 OF 2

Kyle E. Rutz—On behalf of Lat40°, Inc.
Colorado Licensed Professional Land Surveyor No. 38307
DATE: rev4/22/2015
PROJECT#: 2014227