



410 17th Street, Suite 1500  
Denver, CO 80202  
(720) 440-6100 phone  
(720) 305-0804 fax

[Bonanzacrk.com](http://Bonanzacrk.com)

17 June 2015

Colorado Oil and Gas Conservation  
Commission  
The Chancery Building  
1120 Lincoln Street, Suite 801  
Denver, CO 80203

Attn: Mr. Matt Lepore, Director

Re: Notice of 318A.a.(4)D. Horizontal Wellbore Spacing Unit Proposal  
North Platte K21-O24-34HNC  
SHL: SESW (1153' FSL, 2473' FWL) Sec 27-5N-63W, 6<sup>TH</sup> PM  
Top of Production: NENW (631' FNL, 2409' FWL) Sec 34-5N-63W, 6<sup>TH</sup> PM  
Bottom of Production: SESW (470' FSL, 2446' FWL) Sec 34-5N-63W, 6<sup>TH</sup> PM  
Weld County, Colorado

Mr. Lepore:

Bonanza Creek Energy, Inc. (Bonanza) intends to permit, drill and operate the referenced Niobrara Fm. Horizontal Well. As defined by Colorado Oil and Gas Conservation Commission (COGCC) Rule 318A.a.(4)D., Bonanza proposes the following wellbore spacing unit:

E/2W/2 & W/2E/2 Sec 34-T5N-R63W, 6<sup>th</sup> PM, Weld County, CO. – 320 Acres

A map depicting the proposed wellbore spacing unit is attached, for your reference. Bonanza has notified the other owners in the unit and no objections were received. Copies of the notifications are maintained in Bonanza's files.

Bonanza respectfully requests that you review the enclosed wellbore spacing unit documentation and approve the referenced APD.

Please do not hesitate to call or email me, directly, at (720) 440-6112 or [kcaplan@bonanzacrk.com](mailto:kcaplan@bonanzacrk.com), should you have any questions pertaining to this matter.

Thank you for your cooperation.

Sincerely,  
BONANZA CREEK ENERGY OPERATING COMPANY, LLC

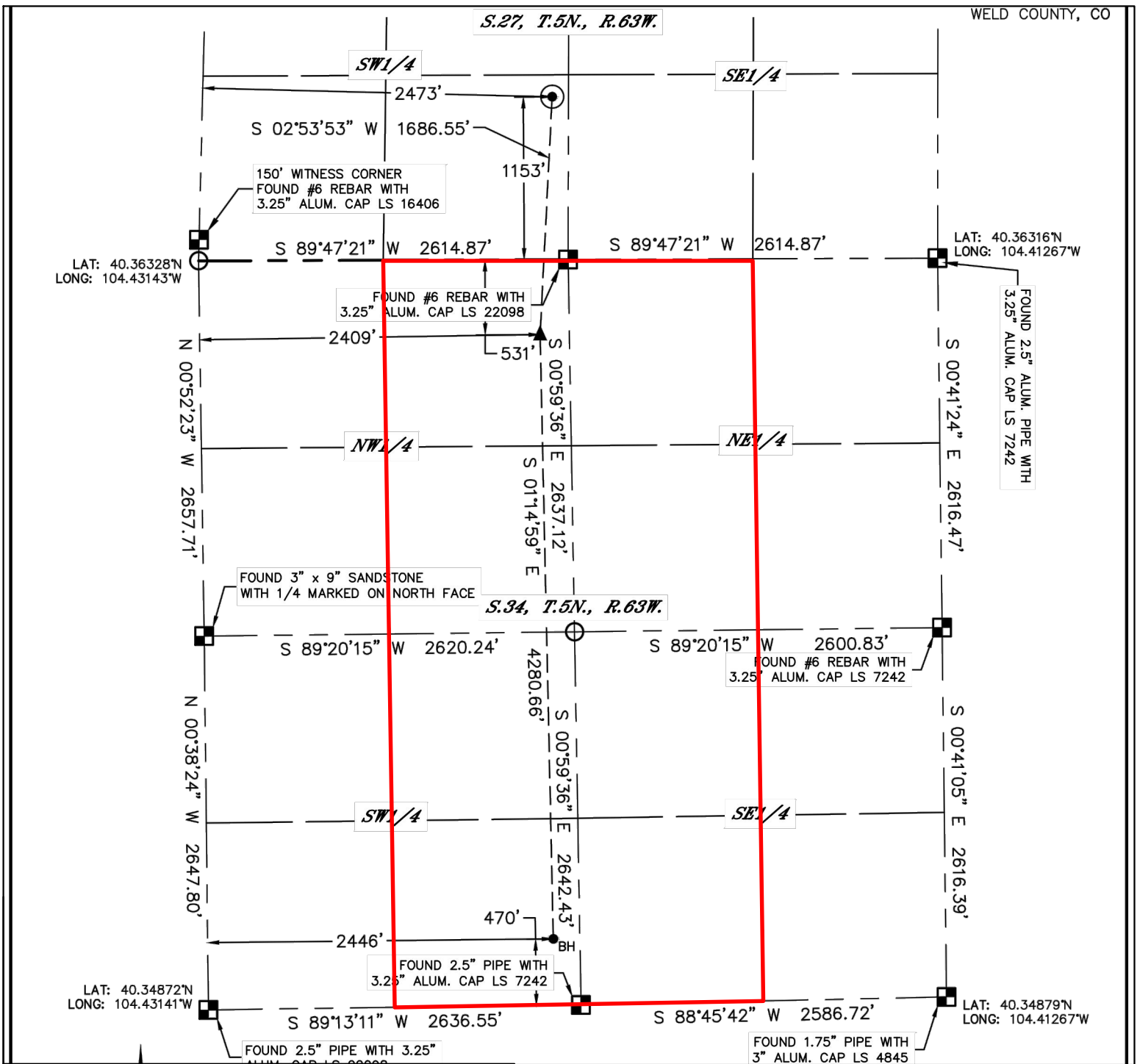
A handwritten signature in blue ink that reads 'Keith S. Caplan'.

Keith S. Caplan  
Sr. Regulatory Specialist

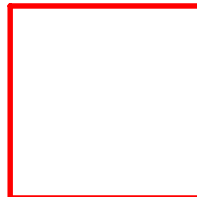
enclosure

CORPORATE OFFICE  
410 17<sup>th</sup> Street, Suite 1400  
Denver, CO 80202  
Office: (720)440-6100

MAGNOLIA OFFICE  
50 Columbia 300  
Magnolia, AR 71753  
Office: (870) 235-0400



**BONANZA  
CREEK**



Wellbore Spacing Unit Outline



## Wellbore Spacing Unit Map

23 April 2015 ksc

North Platte K21-O24-34HNC  
E2/W2 & W2/E2 Sec 34-T5N-R63W 6th PM  
Weld County, Colorado