

BONANZA CREEK ENERGY INC.

WELD COUNTY, COLORADO (NAD 83)

SE SW SEC. 27 T5N R63W 6th P.M.

NORTH PLATTE K21-O24-34HC

ORIGINAL WELLBORE

23 April, 2015

Plan: PROPOSAL #2





Project: WELD COUNTY, COLORADO (NAD 83)
Site: SE SW SEC. 27 T5N R63W 6th P.M.
Well: NORTH PLATTE K21-O24-34HC
Wellbore: ORIGINAL WELLBORE
Design: PROPOSAL #2

ANNOTATIONS										
TVD	MD	Inc	Azi	+N/-S	+E/-W	VSec	Dep	Annotation		
700.0	700.0	0.00	0.00	0.0	0.0	0.0	0.0	START NUDGE (2°/100ft BUR)		
1385.4	1392.1	13.84	194.57	-80.5	-20.9	81.3	83.2	EOB TO 13.84° INC		
5284.3	5407.6	13.84	194.57	-1010.4	-262.6	1020.2	1043.9	END OF TANGENT		
5969.7	6099.8	0.00	0.00	-1090.9	-283.5	1101.5	1127.1	EOD TO VERTICAL		
5999.7	6129.8	0.00	0.00	-1090.9	-283.5	1101.5	1127.1	KOP (12°/100ft BUR)		
6460.9	6754.8	75.00	179.52	-1444.8	-280.5	1455.0	1481.0	START OF TANGENT		
6486.8	6854.8	75.00	179.52	-1541.4	-279.7	1551.5	1577.6	END OF TANGENT		
6503.0	6979.8	90.00	179.52	-1664.9	-278.7	1674.9	1701.2	7" ICP - NORTH PLATTE K21-O24-34HC		
6503.0	11260.5	90.00	179.51	-5945.5	-242.5	5950.4	5981.9	BHL - NORTH PLATTE K21-O24-34HC		

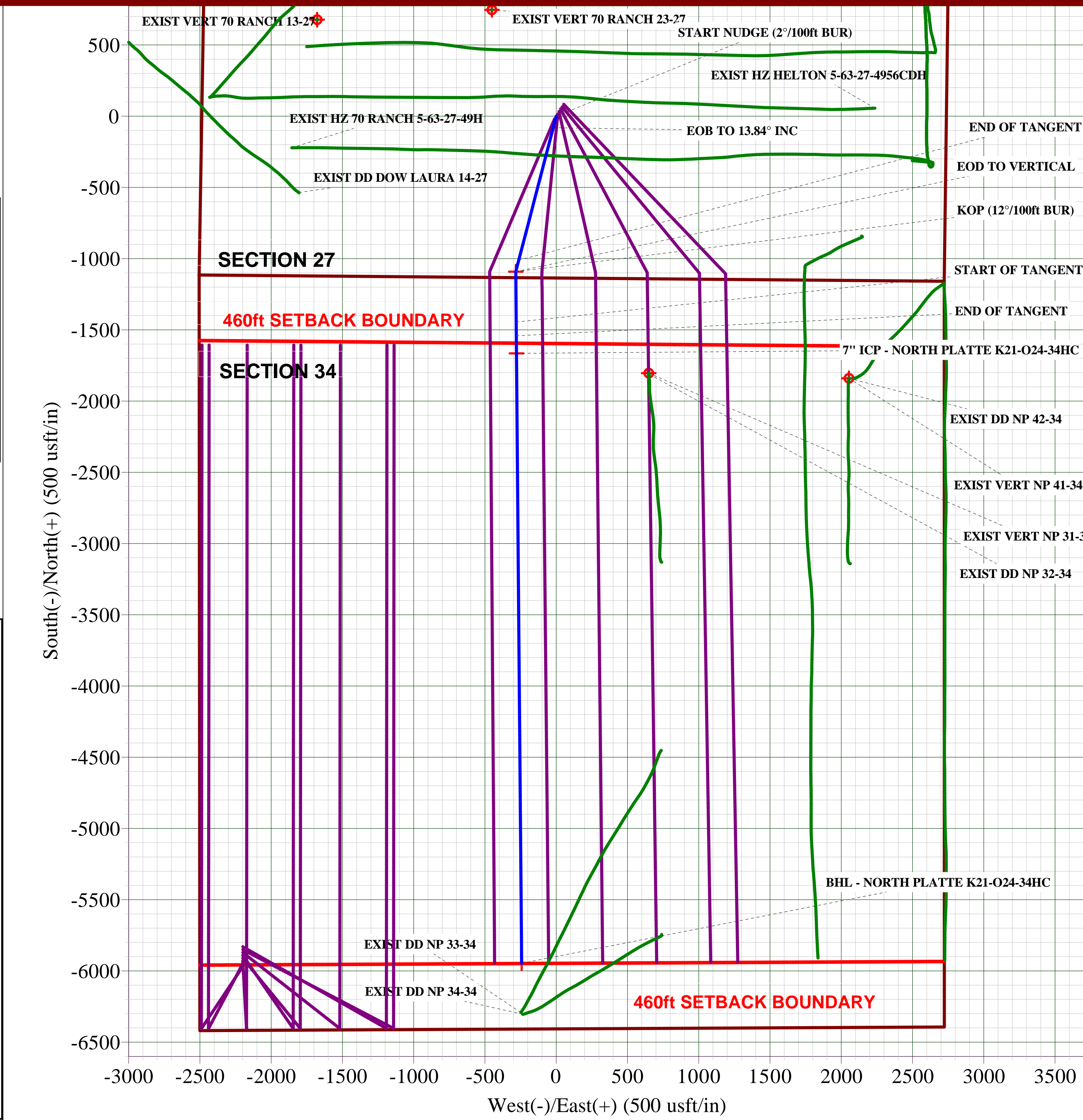
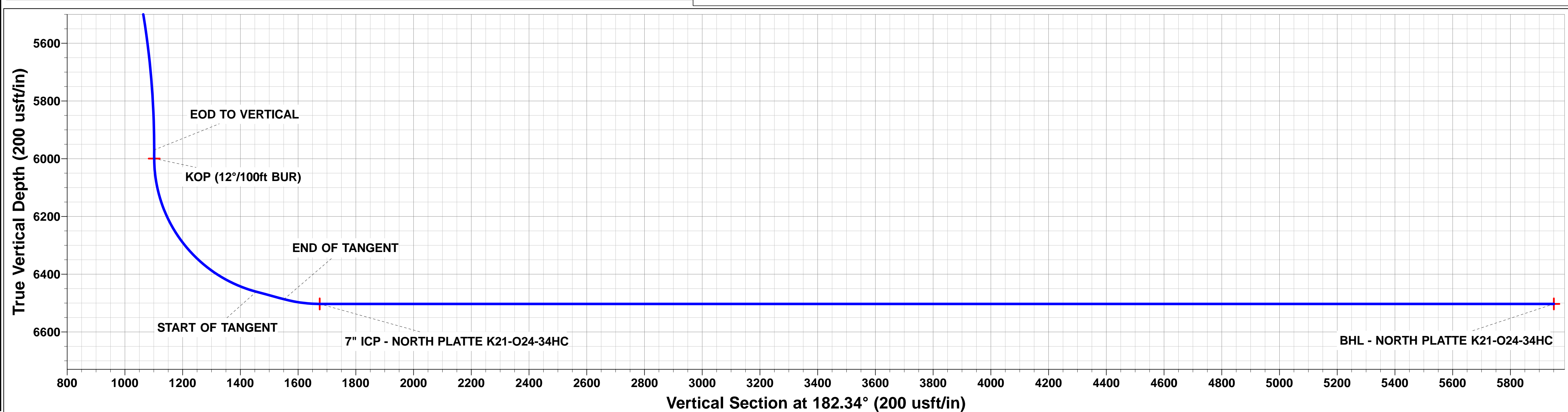
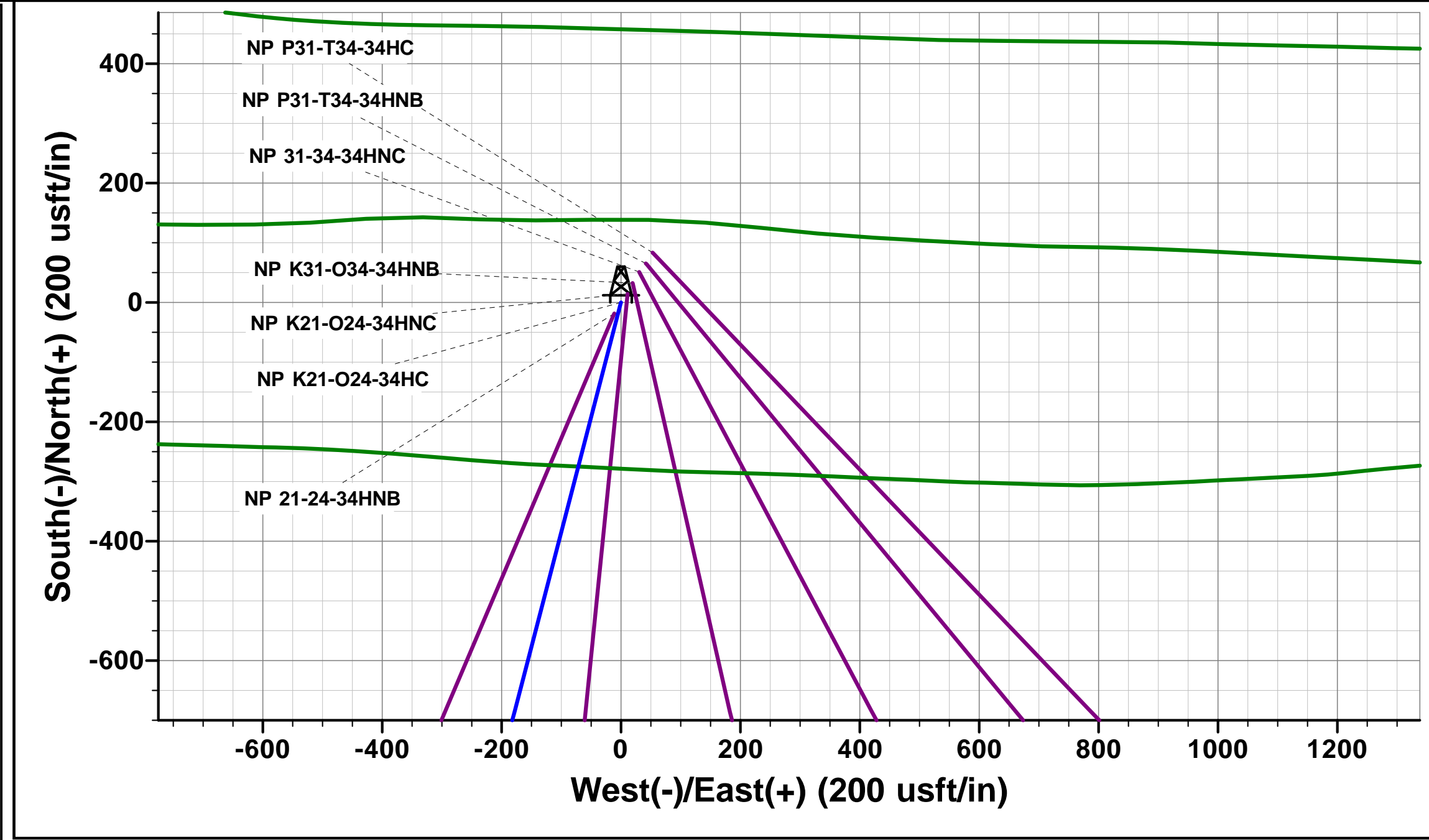
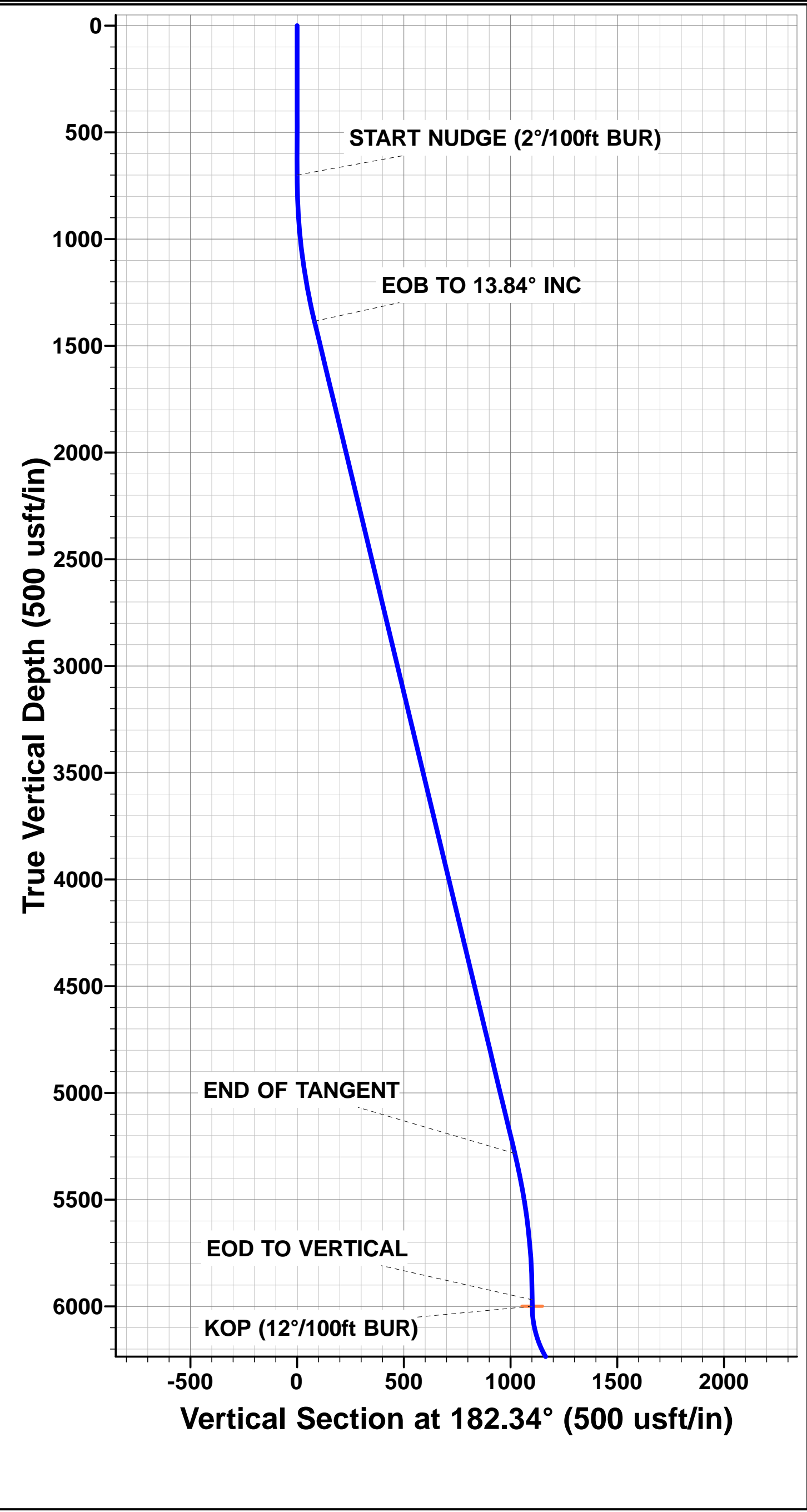
PROPOSED LOCAL COORDINATES:

SHL: 1136ft FSL & 2463ft FWL Sec 27

7" ICP : 531ft FNL & 2226ft FWL Sec 34

BHL: 470ft FSL & 2256ft FWL Sec 34

WELLBORE TARGET DETAILS (LAT/LONG)					
Name	TVD	+N/-S	+E/-W	Latitude	Longitude
KOP - NORTH PLATTE K21-O24-34HC	5999.7	-1090.9	-283.5	40.363346	-104.423457
7" ICP - NORTH PLATTE K21-O24-34HC	6503.0	-1664.9	-278.7	40.361770	-104.423440
BHL - NORTH PLATTE K21-O24-34HC	6503.0	-5945.5	-242.5	40.350020	-104.423310



Planning Report



Database:	EDM 5000.1 Single User Db	Local Co-ordinate Reference:	Well NORTH PLATTE K21-O24-34HC
Company:	BONANZA CREEK ENERGY INC.	TVD Reference:	KB-EST @ 4558.0usft (Original Well Elev)
Project:	WELD COUNTY, COLORADO (NAD 83)	MD Reference:	KB-EST @ 4558.0usft (Original Well Elev)
Site:	SE SW SEC. 27 T5N R63W 6th P.M.	North Reference:	True
Well:	NORTH PLATTE K21-O24-34HC	Survey Calculation Method:	Minimum Curvature
Wellbore:	ORIGINAL WELLBORE		
Design:	PROPOSAL #2		

Project	WELD COUNTY, COLORADO (NAD 83)		
Map System:	US State Plane 1983	System Datum:	Mean Sea Level
Geo Datum:	North American Datum 1983		
Map Zone:	Colorado Northern Zone		Using geodetic scale factor

Site	SE SW SEC. 27 T5N R63W 6th P.M.		
Site Position:		Northing:	1,378,104.19 usft
From:	Lat/Long	Easting:	3,300,242.31 usft
Position Uncertainty:	0.0 usft	Slot Radius:	1.10000ft
		Latitude:	40.366290
		Longitude:	-104.422480
		Grid Convergence:	0.70 °

Well	NORTH PLATTE K21-O24-34HC		
Well Position	+N-S	18.2 usft	Northing:
	+E-W	11.1 usft	Easting:
Position Uncertainty	0.0 usft	Wellhead Elevation:	usft
		Latitude:	40.366340
		Longitude:	-104.422440
		Ground Level:	4,541.0 usft

Wellbore	ORIGINAL WELLBORE				
Magnetics	Model Name	Sample Date	Declination (°)	Dip Angle (°)	Field Strength (nT)
	IGRF2015	23/04/2015	8.25	66.94	52,659

Design	PROPOSAL #2			
Audit Notes:				
Version:	Phase:	PROTOTYPE	Tie On Depth:	0.0
Vertical Section:	Depth From (TVD) (usft)	+N-S (usft)	+E-W (usft)	Direction (°)
	6,503.0	0.0	0.0	182.34

Plan Sections											
MD (usft)	Inc (°)	Azi (°)	Vertical Depth	SS (usft)	+N-S (usft)	+E-W (usft)	Dogleg Rate (°/100usf)	Build Rate (°/100usf)	Turn Rate (°/100usf)	TFO (°)	Target
0.0	0.00	0.00	0.0	-4,558.0	0.0	0.0	0.00	0.00	0.00	0.00	
700.0	0.00	0.00	700.0	-3,858.0	0.0	0.0	0.00	0.00	0.00	0.00	
1,392.1	13.84	194.57	1,385.4	-3,172.6	-80.5	-20.9	2.00	2.00	0.00	194.57	
5,407.6	13.84	194.57	5,284.3	726.3	-1,010.4	-262.6	0.00	0.00	0.00	0.00	
6,099.8	0.00	0.00	5,969.7	1,411.7	-1,090.9	-283.5	2.00	-2.00	0.00	180.00	
6,129.8	0.00	0.00	5,999.7	1,441.7	-1,090.9	-283.5	0.00	0.00	0.00	0.00	KOP - NORTH PLA
6,754.8	75.00	179.52	6,460.9	1,902.9	-1,444.8	-280.5	12.00	12.00	0.00	179.52	
6,854.8	75.00	179.52	6,486.8	1,928.8	-1,541.4	-279.7	0.00	0.00	0.00	0.00	
6,979.8	90.00	179.52	6,503.0	1,945.0	-1,664.9	-278.7	12.00	12.00	0.00	0.00	
11,260.5	90.00	179.51	6,503.0	1,945.0	-5,945.5	-242.5	0.00	0.00	0.00	-82.09	BHL - NORTH PLA

Planning Report



Database:	EDM 5000.1 Single User Db	Local Co-ordinate Reference:	Well NORTH PLATTE K21-O24-34HC
Company:	BONANZA CREEK ENERGY INC.	TVD Reference:	KB-EST @ 4558.0usft (Original Well Elev)
Project:	WELD COUNTY, COLORADO (NAD 83)	MD Reference:	KB-EST @ 4558.0usft (Original Well Elev)
Site:	SE SW SEC. 27 T5N R63W 6th P.M.	North Reference:	True
Well:	NORTH PLATTE K21-O24-34HC	Survey Calculation Method:	Minimum Curvature
Wellbore:	ORIGINAL WELLBORE		
Design:	PROPOSAL #2		

Planned Survey										
MD (usft)	Inc (°)	Azi (°)	TVD (usft)	SS (usft)	+N/-S (usft)	+E/-W (usft)	Vertical Section (usft)	Dogleg Rate (°/100usft)	Build Rate (°/100usft)	Turn Rate (°/100usft)
0.0	0.00	0.00	0.0	4,558.00	0.0	0.0	0.0	0.00	0.00	0.00
100.0	0.00	0.00	100.0	4,458.00	0.0	0.0	0.0	0.00	0.00	0.00
200.0	0.00	0.00	200.0	4,358.00	0.0	0.0	0.0	0.00	0.00	0.00
300.0	0.00	0.00	300.0	4,258.00	0.0	0.0	0.0	0.00	0.00	0.00
400.0	0.00	0.00	400.0	4,158.00	0.0	0.0	0.0	0.00	0.00	0.00
500.0	0.00	0.00	500.0	4,058.00	0.0	0.0	0.0	0.00	0.00	0.00
600.0	0.00	0.00	600.0	3,958.00	0.0	0.0	0.0	0.00	0.00	0.00
START NUDGE (2°/100ft BUR)										
700.0	0.00	0.00	700.0	3,858.00	0.0	0.0	0.0	0.00	0.00	0.00
800.0	2.00	194.57	800.0	3,758.02	-1.7	-0.4	1.7	2.00	2.00	0.00
900.0	4.00	194.57	899.8	3,658.16	-6.8	-1.8	6.8	2.00	2.00	0.00
1,000.0	6.00	194.57	999.5	3,558.55	-15.2	-3.9	15.3	2.00	2.00	0.00
1,100.0	8.00	194.57	1,098.7	3,459.30	-27.0	-7.0	27.2	2.00	2.00	0.00
1,200.0	10.00	194.57	1,197.5	3,360.53	-42.1	-10.9	42.5	2.00	2.00	0.00
1,300.0	12.00	194.57	1,295.6	3,262.38	-60.6	-15.7	61.2	2.00	2.00	0.00
EOB TO 13.84° INC										
1,392.1	13.84	194.57	1,385.4	3,172.58	-80.5	-20.9	81.3	2.00	2.00	0.00
1,400.0	13.84	194.57	1,393.1	3,164.94	-82.4	-21.4	83.2	0.00	0.00	0.00
1,500.0	13.84	194.57	1,490.2	3,067.85	-105.5	-27.4	106.5	0.00	0.00	0.00
1,600.0	13.84	194.57	1,587.2	2,970.75	-128.7	-33.4	129.9	0.00	0.00	0.00
1,700.0	13.84	194.57	1,684.3	2,873.66	-151.8	-39.5	153.3	0.00	0.00	0.00
1,800.0	13.84	194.57	1,781.4	2,776.56	-175.0	-45.5	176.7	0.00	0.00	0.00
1,900.0	13.84	194.57	1,878.5	2,679.46	-198.1	-51.5	200.1	0.00	0.00	0.00
2,000.0	13.84	194.57	1,975.6	2,582.37	-221.3	-57.5	223.4	0.00	0.00	0.00
2,100.0	13.84	194.57	2,072.7	2,485.27	-244.4	-63.5	246.8	0.00	0.00	0.00
2,200.0	13.84	194.57	2,169.8	2,388.18	-267.6	-69.5	270.2	0.00	0.00	0.00
2,300.0	13.84	194.57	2,266.9	2,291.08	-290.8	-75.6	293.6	0.00	0.00	0.00
2,400.0	13.84	194.57	2,364.0	2,193.99	-313.9	-81.6	317.0	0.00	0.00	0.00
2,500.0	13.84	194.57	2,461.1	2,096.89	-337.1	-87.6	340.4	0.00	0.00	0.00
2,600.0	13.84	194.57	2,558.2	1,999.79	-360.2	-93.6	363.7	0.00	0.00	0.00
2,700.0	13.84	194.57	2,655.3	1,902.70	-383.4	-99.6	387.1	0.00	0.00	0.00
2,800.0	13.84	194.57	2,752.4	1,805.60	-406.5	-105.7	410.5	0.00	0.00	0.00
2,900.0	13.84	194.57	2,849.5	1,708.51	-429.7	-111.7	433.9	0.00	0.00	0.00
3,000.0	13.84	194.57	2,946.6	1,611.41	-452.9	-117.7	457.3	0.00	0.00	0.00
3,100.0	13.84	194.57	3,043.7	1,514.32	-476.0	-123.7	480.7	0.00	0.00	0.00
3,200.0	13.84	194.57	3,140.8	1,417.22	-499.2	-129.7	504.0	0.00	0.00	0.00
3,300.0	13.84	194.57	3,237.9	1,320.12	-522.3	-135.7	527.4	0.00	0.00	0.00
3,400.0	13.84	194.57	3,335.0	1,223.03	-545.5	-141.8	550.8	0.00	0.00	0.00
3,500.0	13.84	194.57	3,432.1	1,125.93	-568.6	-147.8	574.2	0.00	0.00	0.00
3,600.0	13.84	194.57	3,529.2	1,028.84	-591.8	-153.8	597.6	0.00	0.00	0.00
3,700.0	13.84	194.57	3,626.3	931.74	-614.9	-159.8	620.9	0.00	0.00	0.00
3,800.0	13.84	194.57	3,723.4	834.65	-638.1	-165.8	644.3	0.00	0.00	0.00
3,900.0	13.84	194.57	3,820.4	737.55	-661.3	-171.8	667.7	0.00	0.00	0.00
4,000.0	13.84	194.57	3,917.5	640.46	-684.4	-177.9	691.1	0.00	0.00	0.00
4,100.0	13.84	194.57	4,014.6	543.36	-707.6	-183.9	714.5	0.00	0.00	0.00
4,200.0	13.84	194.57	4,111.7	446.26	-730.7	-189.9	737.9	0.00	0.00	0.00
4,300.0	13.84	194.57	4,208.8	349.17	-753.9	-195.9	761.2	0.00	0.00	0.00
4,400.0	13.84	194.57	4,305.9	252.07	-777.0	-201.9	784.6	0.00	0.00	0.00
4,500.0	13.84	194.57	4,403.0	154.98	-800.2	-208.0	808.0	0.00	0.00	0.00
4,600.0	13.84	194.57	4,500.1	57.88	-823.4	-214.0	831.4	0.00	0.00	0.00
4,700.0	13.84	194.57	4,597.2	-39.21	-846.5	-220.0	854.8	0.00	0.00	0.00
4,800.0	13.84	194.57	4,694.3	-136.31	-869.7	-226.0	878.2	0.00	0.00	0.00
4,900.0	13.84	194.57	4,791.4	-233.41	-892.8	-232.0	901.5	0.00	0.00	0.00
5,000.0	13.84	194.57	4,888.5	-330.50	-916.0	-238.0	924.9	0.00	0.00	0.00

Planning Report



Database:	EDM 5000.1 Single User Db	Local Co-ordinate Reference:	Well NORTH PLATTE K21-O24-34HC
Company:	BONANZA CREEK ENERGY INC.	TVD Reference:	KB-EST @ 4558.0usft (Original Well Elev)
Project:	WELD COUNTY, COLORADO (NAD 83)	MD Reference:	KB-EST @ 4558.0usft (Original Well Elev)
Site:	SE SW SEC. 27 T5N R63W 6th P.M.	North Reference:	True
Well:	NORTH PLATTE K21-O24-34HC	Survey Calculation Method:	Minimum Curvature
Wellbore:	ORIGINAL WELLBORE		
Design:	PROPOSAL #2		

Planned Survey

MD (usft)	Inc (°)	Azi (°)	TVD (usft)	SS (usft)	+N/-S (usft)	+E/-W (usft)	Vertical Section (usft)	Dogleg Rate (°/100usft)	Build Rate (°/100usft)	Turn Rate (°/100usft)
5,100.0	13.84	194.57	4,985.6	-427.60	-939.1	-244.1	948.3	0.00	0.00	0.00
5,200.0	13.84	194.57	5,082.7	-524.69	-962.3	-250.1	971.7	0.00	0.00	0.00
5,300.0	13.84	194.57	5,179.8	-621.79	-985.5	-256.1	995.1	0.00	0.00	0.00
5,400.0	13.84	194.57	5,276.9	-718.88	-1,008.6	-262.1	1,018.5	0.00	0.00	0.00
END OF TANGENT										
5,407.6	13.84	194.57	5,284.3	-726.28	-1,010.4	-262.6	1,020.2	0.00	0.00	0.00
5,500.0	12.00	194.57	5,374.3	-816.32	-1,030.4	-267.8	1,040.4	2.00	-2.00	0.00
5,600.0	10.00	194.57	5,472.5	-914.48	-1,048.8	-272.6	1,059.1	2.00	-2.00	0.00
5,700.0	8.00	194.57	5,571.2	-1,013.25	-1,063.9	-276.5	1,074.3	2.00	-2.00	0.00
5,800.0	6.00	194.57	5,670.5	-1,112.50	-1,075.7	-279.6	1,086.2	2.00	-2.00	0.00
5,900.0	4.00	194.57	5,770.1	-1,212.11	-1,084.2	-281.7	1,094.7	2.00	-2.00	0.00
6,000.0	2.00	194.57	5,870.0	-1,311.97	-1,089.2	-283.1	1,099.8	2.00	-2.00	0.00
EOD TO VERTICAL										
6,099.8	0.00	0.00	5,969.7	-1,411.70	-1,090.9	-283.5	1,101.5	2.00	-2.00	0.00
6,100.0	0.00	0.00	5,969.9	-1,411.95	-1,090.9	-283.5	1,101.5	0.00	0.00	0.00
KOP (12°/100ft BUR)										
6,129.8	0.00	0.00	5,999.7	-1,441.70	-1,090.9	-283.5	1,101.5	0.00	0.00	0.00
6,200.0	8.43	179.52	6,069.7	-1,511.70	-1,096.1	-283.5	1,106.7	12.00	12.00	0.00
6,300.0	20.43	179.52	6,166.4	-1,608.36	-1,120.9	-283.2	1,131.5	12.00	12.00	0.00
6,400.0	32.43	179.52	6,255.7	-1,697.75	-1,165.4	-282.9	1,175.9	12.00	12.00	0.00
6,500.0	44.43	179.52	6,333.9	-1,775.94	-1,227.4	-282.4	1,237.9	12.00	12.00	0.00
6,600.0	56.43	179.52	6,397.5	-1,839.53	-1,304.3	-281.7	1,314.7	12.00	12.00	0.00
6,700.0	68.43	179.52	6,443.7	-1,885.73	-1,392.8	-281.0	1,403.1	12.00	12.00	0.00
START OF TANGENT										
6,754.8	75.00	179.52	6,460.9	-1,902.90	-1,444.8	-280.5	1,455.0	12.00	12.00	0.00
6,800.0	75.00	179.52	6,472.6	-1,914.61	-1,488.5	-280.2	1,498.7	0.00	0.00	0.00
END OF TANGENT										
6,854.8	75.00	179.52	6,486.8	-1,928.78	-1,541.4	-279.7	1,551.5	0.00	0.00	0.00
6,900.0	80.43	179.52	6,496.4	-1,938.40	-1,585.6	-279.4	1,595.6	12.00	12.00	0.00
7" ICP - NORTH PLATTE K21-O24-34HC										
6,979.8	90.00	179.52	6,503.0	-1,945.05	-1,664.9	-278.7	1,674.9	12.00	12.00	0.00
7,000.0	90.00	179.52	6,503.0	-1,945.05	-1,685.2	-278.5	1,695.1	0.00	0.00	0.00
7,100.0	90.00	179.52	6,503.0	-1,945.05	-1,785.2	-277.7	1,795.0	0.00	0.00	0.00
7,200.0	90.00	179.52	6,503.0	-1,945.05	-1,885.2	-276.8	1,894.9	0.00	0.00	0.00
7,300.0	90.00	179.52	6,503.0	-1,945.05	-1,985.2	-276.0	1,994.8	0.00	0.00	0.00
7,400.0	90.00	179.52	6,503.0	-1,945.05	-2,085.2	-275.2	2,094.7	0.00	0.00	0.00
7,500.0	90.00	179.52	6,503.0	-1,945.05	-2,185.2	-274.3	2,194.5	0.00	0.00	0.00
7,600.0	90.00	179.52	6,503.0	-1,945.05	-2,285.2	-273.5	2,294.4	0.00	0.00	0.00
7,700.0	90.00	179.52	6,503.0	-1,945.05	-2,385.2	-272.6	2,394.3	0.00	0.00	0.00
7,800.0	90.00	179.52	6,503.0	-1,945.05	-2,485.2	-271.8	2,494.2	0.00	0.00	0.00
7,900.0	90.00	179.52	6,503.0	-1,945.04	-2,585.2	-271.0	2,594.0	0.00	0.00	0.00
8,000.0	90.00	179.52	6,503.0	-1,945.04	-2,685.2	-270.1	2,693.9	0.00	0.00	0.00
8,100.0	90.00	179.52	6,503.0	-1,945.04	-2,785.1	-269.3	2,793.8	0.00	0.00	0.00
8,200.0	90.00	179.52	6,503.0	-1,945.04	-2,885.1	-268.4	2,893.7	0.00	0.00	0.00
8,300.0	90.00	179.52	6,503.0	-1,945.04	-2,985.1	-267.6	2,993.6	0.00	0.00	0.00
8,400.0	90.00	179.52	6,503.0	-1,945.04	-3,085.1	-266.8	3,093.4	0.00	0.00	0.00
8,500.0	90.00	179.52	6,503.0	-1,945.04	-3,185.1	-265.9	3,193.3	0.00	0.00	0.00
8,600.0	90.00	179.52	6,503.0	-1,945.04	-3,285.1	-265.1	3,293.2	0.00	0.00	0.00
8,700.0	90.00	179.52	6,503.0	-1,945.04	-3,385.1	-264.2	3,393.1	0.00	0.00	0.00
8,800.0	90.00	179.52	6,503.0	-1,945.04	-3,485.1	-263.4	3,493.0	0.00	0.00	0.00
8,900.0	90.00	179.52	6,503.0	-1,945.04	-3,585.1	-262.5	3,592.8	0.00	0.00	0.00
9,000.0	90.00	179.52	6,503.0	-1,945.04	-3,685.1	-261.7	3,692.7	0.00	0.00	0.00
9,100.0	90.00	179.52	6,503.0	-1,945.04	-3,785.1	-260.8	3,792.6	0.00	0.00	0.00

Planning Report



Database:	EDM 5000.1 Single User Db	Local Co-ordinate Reference:	Well NORTH PLATTE K21-O24-34HC
Company:	BONANZA CREEK ENERGY INC.	TVD Reference:	KB-EST @ 4558.0usft (Original Well Elev)
Project:	WELD COUNTY, COLORADO (NAD 83)	MD Reference:	KB-EST @ 4558.0usft (Original Well Elev)
Site:	SE SW SEC. 27 T5N R63W 6th P.M.	North Reference:	True
Well:	NORTH PLATTE K21-O24-34HC	Survey Calculation Method:	Minimum Curvature
Wellbore:	ORIGINAL WELLBORE		
Design:	PROPOSAL #2		

Planned Survey										
MD (usft)	Inc (°)	Azi (°)	TVD (usft)	SS (usft)	+N/-S (usft)	+E/-W (usft)	Vertical Section (usft)	Dogleg Rate (°/100usft)	Build Rate (°/100usft)	Turn Rate (°/100usft)
9,200.0	90.00	179.52	6,503.0	-1,945.03	-3,885.1	-260.0	3,892.5	0.00	0.00	0.00
9,300.0	90.00	179.52	6,503.0	-1,945.03	-3,985.1	-259.2	3,992.4	0.00	0.00	0.00
9,400.0	90.00	179.51	6,503.0	-1,945.03	-4,085.1	-258.3	4,092.2	0.00	0.00	0.00
9,500.0	90.00	179.51	6,503.0	-1,945.03	-4,185.1	-257.5	4,192.1	0.00	0.00	0.00
9,600.0	90.00	179.51	6,503.0	-1,945.03	-4,285.1	-256.6	4,292.0	0.00	0.00	0.00
9,700.0	90.00	179.51	6,503.0	-1,945.03	-4,385.1	-255.8	4,391.9	0.00	0.00	0.00
9,800.0	90.00	179.51	6,503.0	-1,945.03	-4,485.1	-254.9	4,491.7	0.00	0.00	0.00
9,900.0	90.00	179.51	6,503.0	-1,945.02	-4,585.1	-254.1	4,591.6	0.00	0.00	0.00
10,000.0	90.00	179.51	6,503.0	-1,945.02	-4,685.1	-253.2	4,691.5	0.00	0.00	0.00
10,100.0	90.00	179.51	6,503.0	-1,945.02	-4,785.1	-252.4	4,791.4	0.00	0.00	0.00
10,200.0	90.00	179.51	6,503.0	-1,945.02	-4,885.1	-251.5	4,891.3	0.00	0.00	0.00
10,300.0	90.00	179.51	6,503.0	-1,945.02	-4,985.1	-250.7	4,991.1	0.00	0.00	0.00
10,400.0	90.00	179.51	6,503.0	-1,945.02	-5,085.1	-249.8	5,091.0	0.00	0.00	0.00
10,500.0	90.00	179.51	6,503.0	-1,945.02	-5,185.1	-249.0	5,190.9	0.00	0.00	0.00
10,600.0	90.00	179.51	6,503.0	-1,945.01	-5,285.1	-248.1	5,290.8	0.00	0.00	0.00
10,700.0	90.00	179.51	6,503.0	-1,945.01	-5,385.1	-247.3	5,390.7	0.00	0.00	0.00
10,800.0	90.00	179.51	6,503.0	-1,945.01	-5,485.0	-246.4	5,490.5	0.00	0.00	0.00
10,900.0	90.00	179.51	6,503.0	-1,945.01	-5,585.0	-245.6	5,590.4	0.00	0.00	0.00
11,000.0	90.00	179.51	6,503.0	-1,945.01	-5,685.0	-244.7	5,690.3	0.00	0.00	0.00
11,100.0	90.00	179.51	6,503.0	-1,945.00	-5,785.0	-243.9	5,790.2	0.00	0.00	0.00
11,200.0	90.00	179.51	6,503.0	-1,945.00	-5,885.0	-243.0	5,890.0	0.00	0.00	0.00
BHL - NORTH PLATTE K21-O24-34HC										
11,260.5	90.00	179.51	6,503.0	-1,945.00	-5,945.5	-242.5	5,950.5	0.00	0.00	0.00

Plan Annotations					
MD (usft)	TVD (usft)	Local Coordinates		Comment	
		+N/-S (usft)	+E/-W (usft)		
700.0	700.0	0.0	0.0	START NUDGE (2°/100ft BUR)	
1,392.1	1,385.4	-80.5	-20.9	EOB TO 13.84° INC	
5,407.6	5,284.3	-1,010.4	-262.6	END OF TANGENT	
6,099.8	5,969.7	-1,090.9	-283.5	EOD TO VERTICAL	
6,129.8	5,999.7	-1,090.9	-283.5	KOP (12°/100ft BUR)	
6,754.8	6,460.9	-1,444.8	-280.5	START OF TANGENT	
6,854.8	6,486.8	-1,541.4	-279.7	END OF TANGENT	
6,979.8	6,503.0	-1,664.9	-278.7	7" ICP - NORTH PLATTE K21-O24-34HC	
11,260.5	6,503.0	-5,945.5	-242.5	BHL - NORTH PLATTE K21-O24-34HC	