

BONANZA CREEK ENERGY INC.

WELD COUNTY, COLORADO (NAD 83)

SE SW SEC. 27 T5N R63W 6th P.M.

NORTH PLATTE 21-24-34HNB

ORIGINAL WELLBORE

23 April, 2015

Plan: PROPOSAL #2





Project: WELD COUNTY, COLORADO (NAD 83)
Site: SE SW SEC. 27 T5N R63W 6th P.M.
Well: NORTH PLATTE 21-24-34HNB
Wellbore: ORIGINAL WELLBORE
Design: PROPOSAL #2

ANNOTATIONS										
TVD	MD	Inc	Azi	+N/-S	+E/-W	VSect	Dep	Annotation		
600.0	600.0	0.00	0.00	0.0	0.0	0.0	0.0	START NUDGE (2°/100ft BUR)		
1327.3	1335.3	14.71	203.01	-86.4	-36.7	88.8	93.9	EOB TO 14.71° INC		
5052.4	5186.6	14.71	203.01	-986.3	-418.9	1013.5	1071.6	END OF TANGENT		
5779.7	5922.0	0.00	0.00	-1072.7	-455.6	1102.3	1165.4	EOD TO VERTICAL		
5809.7	5952.0	0.00	0.00	-1072.7	-455.6	1102.3	1165.4	KOP (12°/100ft BUR)		
6270.9	6577.0	75.00	179.59	-1426.6	-453.1	1455.1	1519.3	START OF TANGENT		
6296.8	6677.0	75.00	179.59	-1523.2	-452.4	1551.4	1615.9	END OF TANGENT		
6313.0	6802.0	90.00	179.59	-1646.7	-451.5	1674.6	1739.5	7" ICP - NORTH PLATTE 21-24-34HNB		
6313.0	11082.6	90.00	179.59	-5927.3	-420.9	5942.2	6020.2	BHL - NORTH PLATTE 21-24-34HNB		

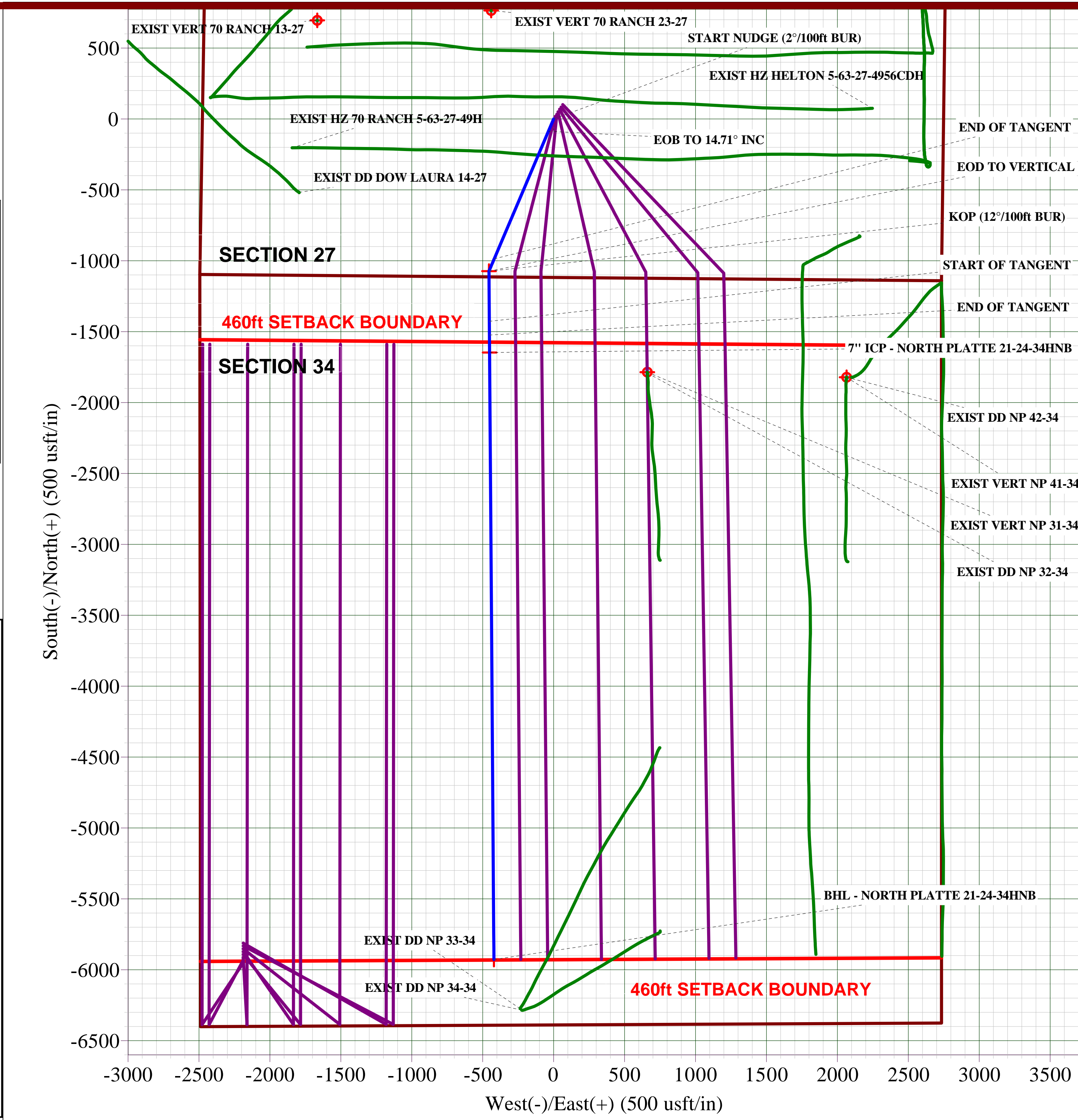
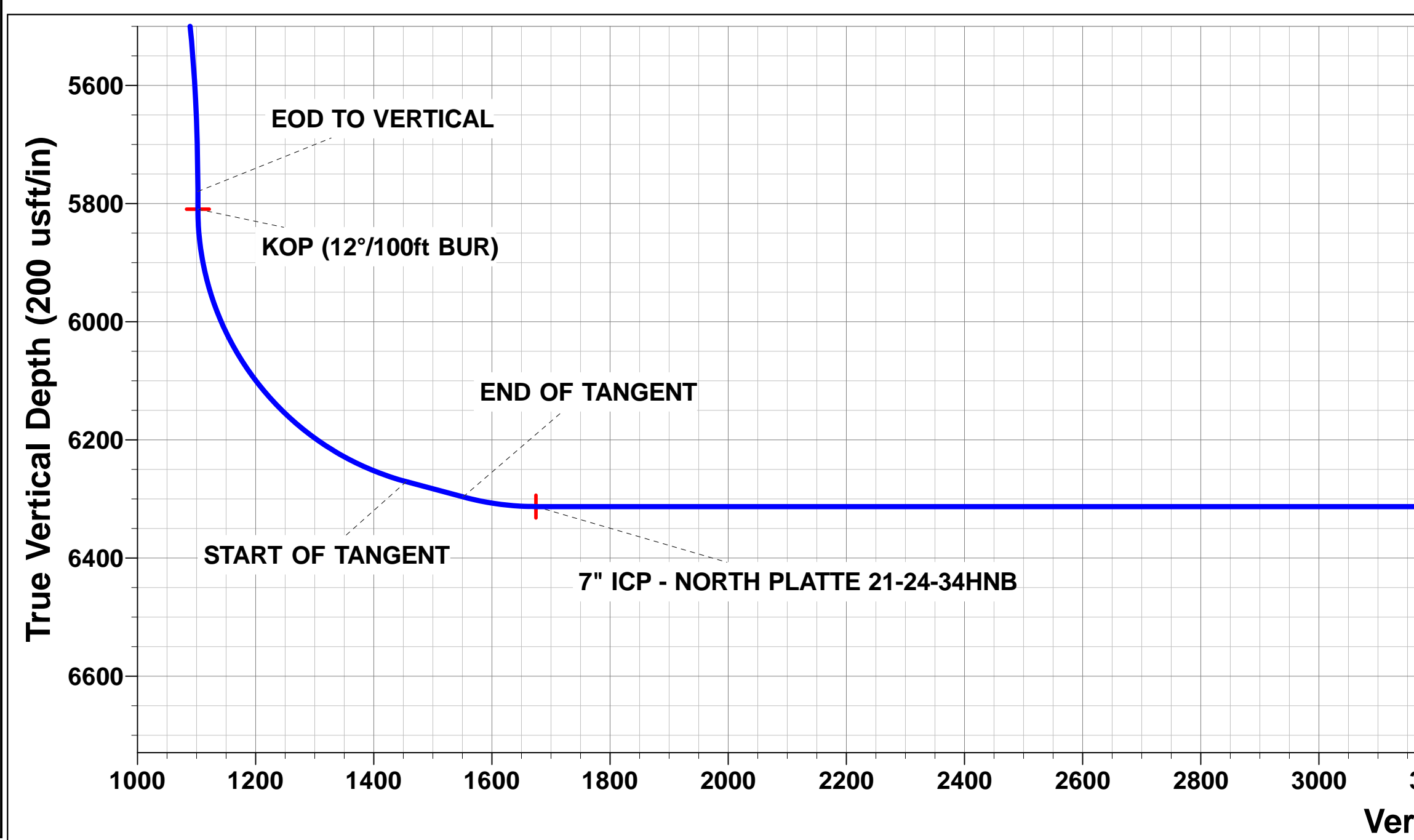
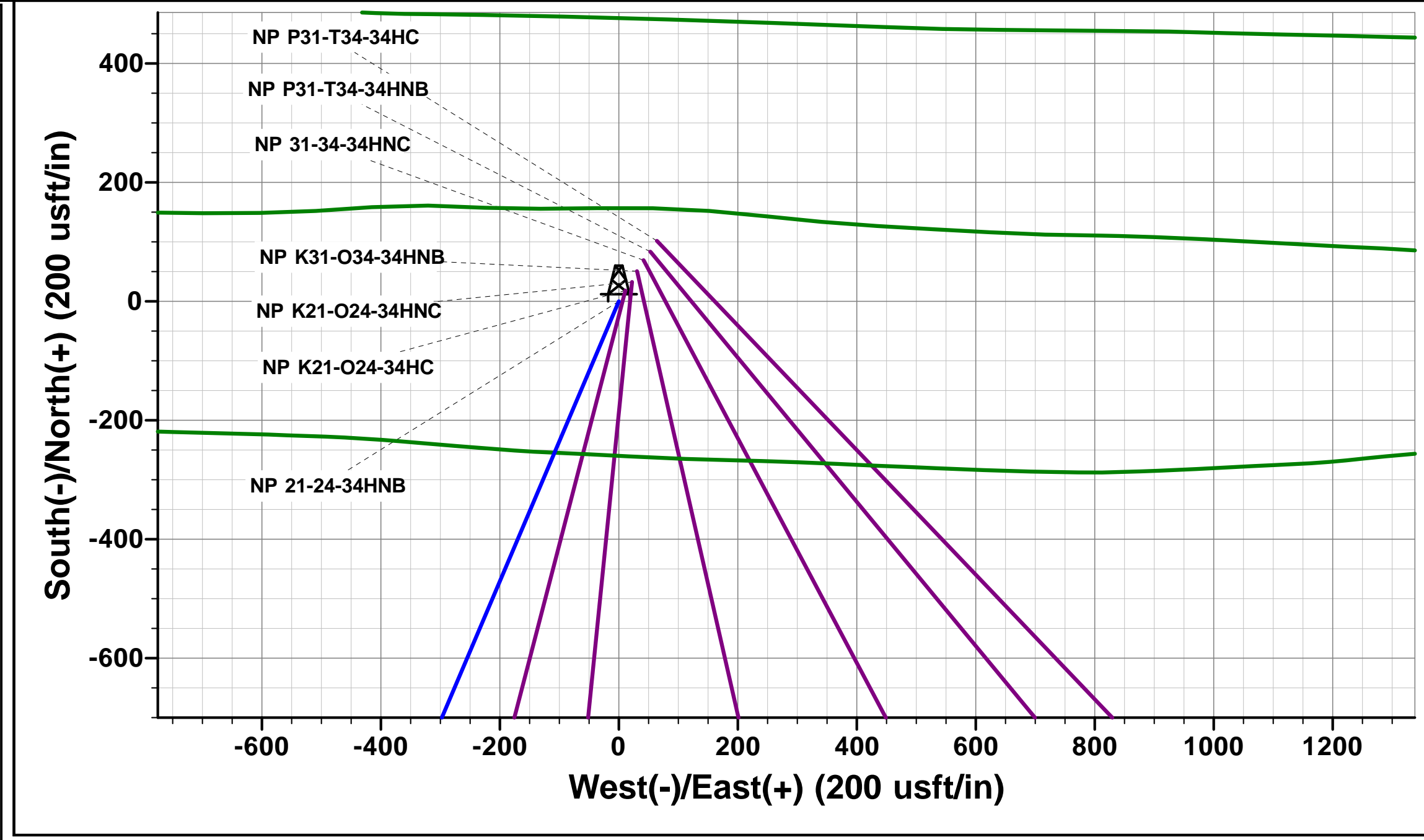
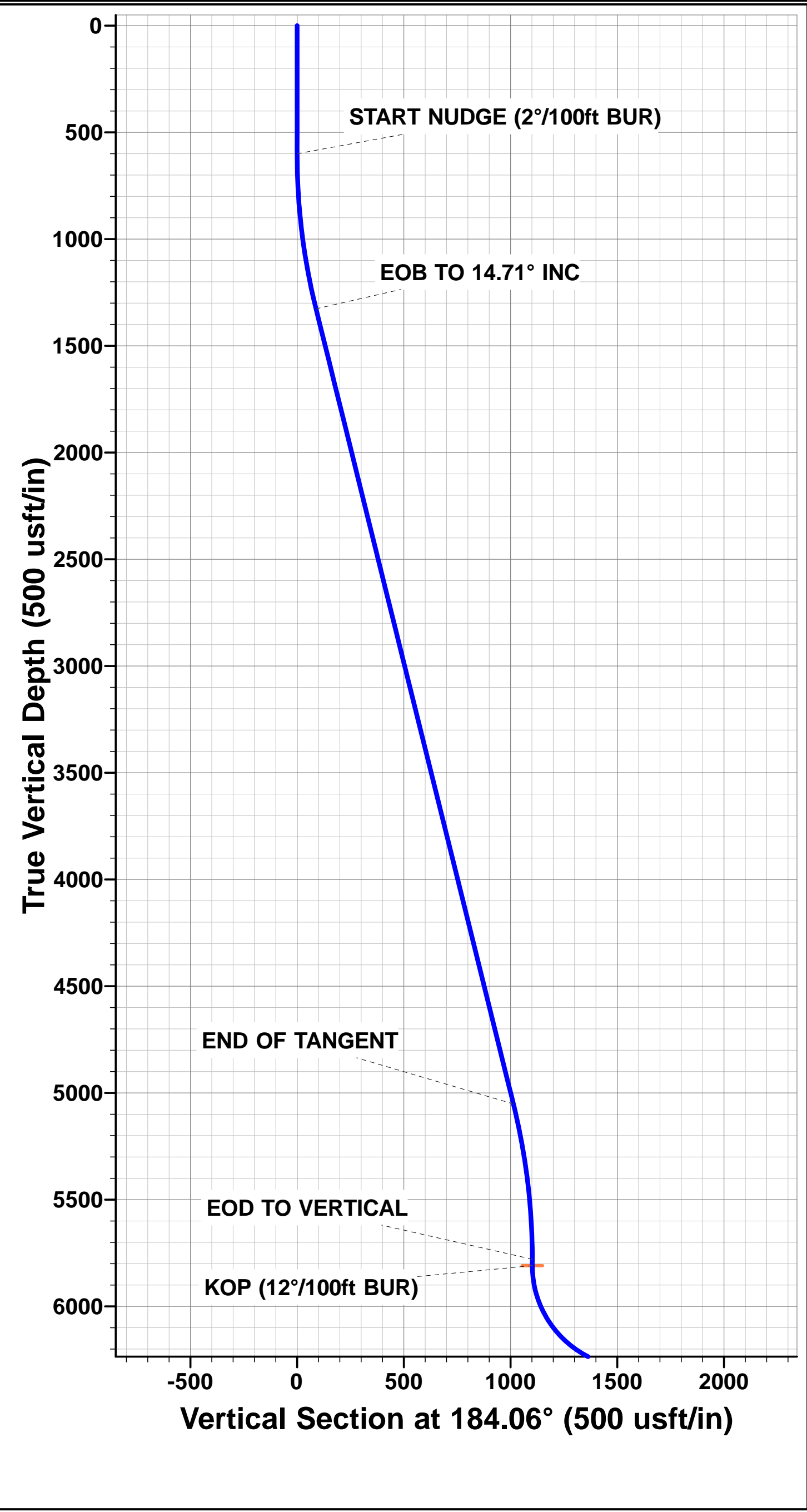
PROPOSED LOCAL COORDINATES:

SHL: 1119ft FSL & 2453ft FWL Sec 27

7" ICP : 531ft FNL & 2042ft FWL Sec 34

BHL: 470ft FSL & 2067ft FWL Sec 34

WELLBORE TARGET DETAILS (LAT/LONG)					
Name	TVD	+N/-S	+E/-W	Latitude	Longitude
KOP - NORTH PLATTE 21-24-34HNB	5809.7	-1072.7	-455.6	40.363345	-104.424115
7" ICP - NORTH PLATTE 21-24-34HNB	6313.0	-1646.7	-451.5	40.361770	-104.424100
BHL - NORTH PLATTE 21-24-34HNB	6313.0	-5927.3	-420.9	40.350020	-104.423990



Planning Report



Database:	EDM 5000.1 Single User Db	Local Co-ordinate Reference:	Well NORTH PLATTE 21-24-34HNB
Company:	BONANZA CREEK ENERGY INC.	TVD Reference:	KB-EST @ 4558.0usft (Original Well Elev)
Project:	WELD COUNTY, COLORADO (NAD 83)	MD Reference:	KB-EST @ 4558.0usft (Original Well Elev)
Site:	SE SW SEC. 27 T5N R63W 6th P.M.	North Reference:	True
Well:	NORTH PLATTE 21-24-34HNB	Survey Calculation Method:	Minimum Curvature
Wellbore:	ORIGINAL WELLBORE		
Design:	PROPOSAL #2		

Project	WELD COUNTY, COLORADO (NAD 83)		
Map System:	US State Plane 1983	System Datum:	Mean Sea Level
Geo Datum:	North American Datum 1983		
Map Zone:	Colorado Northern Zone		Using geodetic scale factor

Site	SE SW SEC. 27 T5N R63W 6th P.M.		
Site Position:		Northing:	1,378,104.19 usft
From:	Lat/Long	Easting:	3,300,242.31 usft
Position Uncertainty:	0.0 usft	Slot Radius:	1.10000ft
		Latitude:	40.366290
		Longitude:	-104.422480
		Grid Convergence:	0.70 °

Well	NORTH PLATTE 21-24-34HNB		
Well Position	+N/-S	0.0 usft	Northing: 1,378,104.19 usft
	+E/-W	0.0 usft	Easting: 3,300,242.31 usft
Position Uncertainty	0.0 usft	Wellhead Elevation:	usft
		Latitude:	40.366290
		Longitude:	-104.422480
		Ground Level:	4,541.0 usft

Wellbore	ORIGINAL WELLBORE				
Magnetics	Model Name	Sample Date	Declination (°)	Dip Angle (°)	Field Strength (nT)
	IGRF2015	23/04/2015	8.25	66.94	52,659

Design	PROPOSAL #2			
Audit Notes:				
Version:	Phase:	PROTOTYPE	Tie On Depth:	0.0
Vertical Section:	Depth From (TVD) (usft)	+N/-S (usft)	+E/-W (usft)	Direction (°)
	6,313.0	0.0	0.0	184.06

Plan Sections											
MD (usft)	Inc (°)	Azi (°)	Vertical Depth	SS (usft)	+N/-S (usft)	+E/-W (usft)	Dogleg Rate (°/100usf)	Build Rate (°/100usf)	Turn Rate (°/100usf)	TFO (°)	Target
0.0	0.00	0.00	0.0	-4,558.0	0.0	0.0	0.00	0.00	0.00	0.00	
600.0	0.00	0.00	600.0	-3,958.0	0.0	0.0	0.00	0.00	0.00	0.00	
1,335.3	14.71	203.01	1,327.3	-3,230.7	-86.4	-36.7	2.00	2.00	0.00	203.01	
5,186.6	14.71	203.01	5,052.4	494.4	-986.3	-418.9	0.00	0.00	0.00	0.00	
5,922.0	0.00	0.00	5,779.7	1,221.7	-1,072.7	-455.6	2.00	-2.00	0.00	180.00	
5,952.0	0.00	0.00	5,809.7	1,251.7	-1,072.7	-455.6	0.00	0.00	0.00	0.00	KOP - NORTH PLA
6,577.0	75.00	179.59	6,270.9	1,712.9	-1,426.6	-453.1	12.00	12.00	0.00	179.59	
6,677.0	75.00	179.59	6,296.8	1,738.8	-1,523.2	-452.4	0.00	0.00	0.00	0.00	
6,802.0	90.00	179.59	6,313.0	1,755.0	-1,646.7	-451.5	12.00	12.00	0.00	0.00	
11,082.6	90.00	179.59	6,313.0	1,755.0	-5,927.3	-420.9	0.00	0.00	0.00	0.00	BHL - NORTH PLA

Planning Report



Database:	EDM 5000.1 Single User Db	Local Co-ordinate Reference:	Well NORTH PLATTE 21-24-34HNB
Company:	BONANZA CREEK ENERGY INC.	TVD Reference:	KB-EST @ 4558.0usft (Original Well Elev)
Project:	WELD COUNTY, COLORADO (NAD 83)	MD Reference:	KB-EST @ 4558.0usft (Original Well Elev)
Site:	SE SW SEC. 27 T5N R63W 6th P.M.	North Reference:	True
Well:	NORTH PLATTE 21-24-34HNB	Survey Calculation Method:	Minimum Curvature
Wellbore:	ORIGINAL WELLBORE		
Design:	PROPOSAL #2		

Planned Survey

MD (usft)	Inc (°)	Azi (°)	TVD (usft)	SS (usft)	+N/-S (usft)	+E/-W (usft)	Vertical Section (usft)	Dogleg Rate (°/100usft)	Build Rate (°/100usft)	Turn Rate (°/100usft)
0.0	0.00	0.00	0.0	4,558.00	0.0	0.0	0.0	0.00	0.00	0.00
100.0	0.00	0.00	100.0	4,458.00	0.0	0.0	0.0	0.00	0.00	0.00
200.0	0.00	0.00	200.0	4,358.00	0.0	0.0	0.0	0.00	0.00	0.00
300.0	0.00	0.00	300.0	4,258.00	0.0	0.0	0.0	0.00	0.00	0.00
400.0	0.00	0.00	400.0	4,158.00	0.0	0.0	0.0	0.00	0.00	0.00
500.0	0.00	0.00	500.0	4,058.00	0.0	0.0	0.0	0.00	0.00	0.00
START NUDGE (2°/100ft BUR)										
600.0	0.00	0.00	600.0	3,958.00	0.0	0.0	0.0	0.00	0.00	0.00
700.0	2.00	203.01	700.0	3,858.02	-1.6	-0.7	1.7	2.00	2.00	0.00
800.0	4.00	203.01	799.8	3,758.16	-6.4	-2.7	6.6	2.00	2.00	0.00
900.0	6.00	203.01	899.5	3,658.55	-14.4	-6.1	14.8	2.00	2.00	0.00
1,000.0	8.00	203.01	998.7	3,559.30	-25.7	-10.9	26.4	2.00	2.00	0.00
1,100.0	10.00	203.01	1,097.5	3,460.53	-40.1	-17.0	41.2	2.00	2.00	0.00
1,200.0	12.00	203.01	1,195.6	3,362.38	-57.6	-24.5	59.2	2.00	2.00	0.00
1,300.0	14.00	203.01	1,293.1	3,264.94	-78.3	-33.3	80.5	2.00	2.00	0.00
EOB TO 14.71° INC										
1,335.3	14.71	203.01	1,327.3	3,230.72	-86.4	-36.7	88.8	2.00	2.00	0.00
1,400.0	14.71	203.01	1,389.8	3,168.17	-101.5	-43.1	104.3	0.00	0.00	0.00
1,500.0	14.71	203.01	1,486.6	3,071.44	-124.9	-53.0	128.3	0.00	0.00	0.00
1,600.0	14.71	203.01	1,583.3	2,974.72	-148.2	-63.0	152.3	0.00	0.00	0.00
1,700.0	14.71	203.01	1,680.0	2,878.00	-171.6	-72.9	176.3	0.00	0.00	0.00
1,800.0	14.71	203.01	1,776.7	2,781.27	-195.0	-82.8	200.3	0.00	0.00	0.00
1,900.0	14.71	203.01	1,873.5	2,684.55	-218.3	-92.7	224.4	0.00	0.00	0.00
2,000.0	14.71	203.01	1,970.2	2,587.82	-241.7	-102.7	248.4	0.00	0.00	0.00
2,100.0	14.71	203.01	2,066.9	2,491.10	-265.1	-112.6	272.4	0.00	0.00	0.00
2,200.0	14.71	203.01	2,163.6	2,394.38	-288.4	-122.5	296.4	0.00	0.00	0.00
2,300.0	14.71	203.01	2,260.3	2,297.65	-311.8	-132.4	320.4	0.00	0.00	0.00
2,400.0	14.71	203.01	2,357.1	2,200.93	-335.2	-142.4	344.4	0.00	0.00	0.00
2,500.0	14.71	203.01	2,453.8	2,104.20	-358.5	-152.3	368.4	0.00	0.00	0.00
2,600.0	14.71	203.01	2,550.5	2,007.48	-381.9	-162.2	392.4	0.00	0.00	0.00
2,700.0	14.71	203.01	2,647.2	1,910.76	-405.3	-172.1	416.4	0.00	0.00	0.00
2,800.0	14.71	203.01	2,744.0	1,814.03	-428.6	-182.0	440.5	0.00	0.00	0.00
2,900.0	14.71	203.01	2,840.7	1,717.31	-452.0	-192.0	464.5	0.00	0.00	0.00
3,000.0	14.71	203.01	2,937.4	1,620.59	-475.4	-201.9	488.5	0.00	0.00	0.00
3,100.0	14.71	203.01	3,034.1	1,523.86	-498.7	-211.8	512.5	0.00	0.00	0.00
3,200.0	14.71	203.01	3,130.9	1,427.14	-522.1	-221.7	536.5	0.00	0.00	0.00
3,300.0	14.71	203.01	3,227.6	1,330.41	-545.5	-231.7	560.5	0.00	0.00	0.00
3,400.0	14.71	203.01	3,324.3	1,233.69	-568.8	-241.6	584.5	0.00	0.00	0.00
3,500.0	14.71	203.01	3,421.0	1,136.97	-592.2	-251.5	608.5	0.00	0.00	0.00
3,600.0	14.71	203.01	3,517.8	1,040.24	-615.6	-261.4	632.5	0.00	0.00	0.00
3,700.0	14.71	203.01	3,614.5	943.52	-638.9	-271.4	656.5	0.00	0.00	0.00
3,800.0	14.71	203.01	3,711.2	846.79	-662.3	-281.3	680.6	0.00	0.00	0.00
3,900.0	14.71	203.01	3,807.9	750.07	-685.7	-291.2	704.6	0.00	0.00	0.00
4,000.0	14.71	203.01	3,904.7	653.35	-709.0	-301.1	728.6	0.00	0.00	0.00
4,100.0	14.71	203.01	4,001.4	556.62	-732.4	-311.1	752.6	0.00	0.00	0.00
4,200.0	14.71	203.01	4,098.1	459.90	-755.8	-321.0	776.6	0.00	0.00	0.00
4,300.0	14.71	203.01	4,194.8	363.18	-779.1	-330.9	800.6	0.00	0.00	0.00
4,400.0	14.71	203.01	4,291.5	266.45	-802.5	-340.8	824.6	0.00	0.00	0.00
4,500.0	14.71	203.01	4,388.3	169.73	-825.9	-350.8	848.6	0.00	0.00	0.00
4,600.0	14.71	203.01	4,485.0	73.00	-849.2	-360.7	872.6	0.00	0.00	0.00
4,700.0	14.71	203.01	4,581.7	-23.72	-872.6	-370.6	896.7	0.00	0.00	0.00
4,800.0	14.71	203.01	4,678.4	-120.44	-896.0	-380.5	920.7	0.00	0.00	0.00
4,900.0	14.71	203.01	4,775.2	-217.17	-919.3	-390.5	944.7	0.00	0.00	0.00
5,000.0	14.71	203.01	4,871.9	-313.89	-942.7	-400.4	968.7	0.00	0.00	0.00

Planning Report



Database:	EDM 5000.1 Single User Db	Local Co-ordinate Reference:	Well NORTH PLATTE 21-24-34HNB
Company:	BONANZA CREEK ENERGY INC.	TVD Reference:	KB-EST @ 4558.0usft (Original Well Elev)
Project:	WELD COUNTY, COLORADO (NAD 83)	MD Reference:	KB-EST @ 4558.0usft (Original Well Elev)
Site:	SE SW SEC. 27 T5N R63W 6th P.M.	North Reference:	True
Well:	NORTH PLATTE 21-24-34HNB	Survey Calculation Method:	Minimum Curvature
Wellbore:	ORIGINAL WELLBORE		
Design:	PROPOSAL #2		

Planned Survey

MD (usft)	Inc (°)	Azi (°)	TVD (usft)	SS (usft)	+N/-S (usft)	+E/-W (usft)	Vertical Section (usft)	Dogleg Rate (°/100usft)	Build Rate (°/100usft)	Turn Rate (°/100usft)
5,100.0	14.71	203.01	4,968.6	-410.62	-966.1	-410.3	992.7	0.00	0.00	0.00
END OF TANGENT										
5,186.6	14.71	203.01	5,052.4	-494.42	-986.3	-418.9	1,013.5	0.00	0.00	0.00
5,200.0	14.44	203.01	5,065.3	-507.35	-989.4	-420.2	1,016.7	2.00	-2.00	0.00
5,300.0	12.44	203.01	5,162.6	-604.60	-1,010.8	-429.3	1,038.7	2.00	-2.00	0.00
5,400.0	10.44	203.01	5,260.6	-702.61	-1,029.1	-437.1	1,057.4	2.00	-2.00	0.00
5,500.0	8.44	203.01	5,359.3	-801.25	-1,044.1	-443.5	1,072.9	2.00	-2.00	0.00
5,600.0	6.44	203.01	5,458.4	-900.41	-1,056.1	-448.5	1,085.2	2.00	-2.00	0.00
5,700.0	4.44	203.01	5,558.0	-999.95	-1,064.8	-452.2	1,094.1	2.00	-2.00	0.00
5,800.0	2.44	203.01	5,657.8	-1,099.77	-1,070.3	-454.6	1,099.8	2.00	-2.00	0.00
5,900.0	0.44	203.01	5,757.7	-1,199.73	-1,072.6	-455.6	1,102.2	2.00	-2.00	0.00
EOD TO VERTICAL										
5,922.0	0.00	0.00	5,779.7	-1,221.70	-1,072.7	-455.6	1,102.3	2.00	-2.00	0.00
KOP (12°/100ft BUR)										
5,952.0	0.00	0.00	5,809.7	-1,251.70	-1,072.7	-455.6	1,102.3	0.00	0.00	0.00
6,000.0	5.76	179.59	5,857.6	-1,299.65	-1,075.1	-455.6	1,104.7	12.00	12.00	0.00
6,100.0	17.76	179.59	5,955.4	-1,397.37	-1,095.5	-455.4	1,125.0	12.00	12.00	0.00
6,200.0	29.76	179.59	6,046.7	-1,488.72	-1,135.7	-455.1	1,165.1	12.00	12.00	0.00
6,300.0	41.76	179.59	6,127.7	-1,569.72	-1,194.0	-454.7	1,223.2	12.00	12.00	0.00
6,400.0	53.76	179.59	6,194.8	-1,636.82	-1,267.9	-454.2	1,296.9	12.00	12.00	0.00
6,500.0	65.76	179.59	6,245.1	-1,687.08	-1,354.2	-453.6	1,382.9	12.00	12.00	0.00
START OF TANGENT										
6,577.0	75.00	179.59	6,270.9	-1,712.90	-1,426.6	-453.1	1,455.1	12.00	12.00	0.00
6,600.0	75.00	179.59	6,276.9	-1,718.86	-1,448.8	-452.9	1,477.3	0.00	0.00	0.00
END OF TANGENT										
6,677.0	75.00	179.59	6,296.8	-1,738.78	-1,523.2	-452.4	1,551.4	0.00	0.00	0.00
6,700.0	77.76	179.59	6,302.2	-1,744.20	-1,545.5	-452.2	1,573.7	12.00	12.00	0.00
6,800.0	89.76	179.59	6,313.0	-1,755.04	-1,644.8	-451.5	1,672.6	12.00	12.00	0.00
7" ICP - NORTH PLATTE 21-24-34HNB										
6,802.0	90.00	179.59	6,313.0	-1,755.05	-1,646.7	-451.5	1,674.6	12.00	12.00	0.00
6,900.0	90.00	179.59	6,313.0	-1,755.05	-1,744.8	-450.8	1,772.3	0.00	0.00	0.00
7,000.0	90.00	179.59	6,313.0	-1,755.05	-1,844.8	-450.1	1,872.0	0.00	0.00	0.00
7,100.0	90.00	179.59	6,313.0	-1,755.05	-1,944.8	-449.4	1,971.7	0.00	0.00	0.00
7,200.0	90.00	179.59	6,313.0	-1,755.05	-2,044.8	-448.6	2,071.4	0.00	0.00	0.00
7,300.0	90.00	179.59	6,313.0	-1,755.05	-2,144.8	-447.9	2,171.1	0.00	0.00	0.00
7,400.0	90.00	179.59	6,313.0	-1,755.05	-2,244.8	-447.2	2,270.8	0.00	0.00	0.00
7,500.0	90.00	179.59	6,313.0	-1,755.05	-2,344.8	-446.5	2,370.5	0.00	0.00	0.00
7,600.0	90.00	179.59	6,313.0	-1,755.05	-2,444.8	-445.8	2,470.2	0.00	0.00	0.00
7,700.0	90.00	179.59	6,313.0	-1,755.05	-2,544.7	-445.1	2,569.9	0.00	0.00	0.00
7,800.0	90.00	179.59	6,313.0	-1,755.05	-2,644.7	-444.4	2,669.6	0.00	0.00	0.00
7,900.0	90.00	179.59	6,313.0	-1,755.05	-2,744.7	-443.6	2,769.3	0.00	0.00	0.00
8,000.0	90.00	179.59	6,313.0	-1,755.05	-2,844.7	-442.9	2,869.0	0.00	0.00	0.00
8,100.0	90.00	179.59	6,313.0	-1,755.05	-2,944.7	-442.2	2,968.7	0.00	0.00	0.00
8,200.0	90.00	179.59	6,313.0	-1,755.05	-3,044.7	-441.5	3,068.4	0.00	0.00	0.00
8,300.0	90.00	179.59	6,313.0	-1,755.05	-3,144.7	-440.8	3,168.1	0.00	0.00	0.00
8,400.0	90.00	179.59	6,313.0	-1,755.05	-3,244.7	-440.1	3,267.8	0.00	0.00	0.00
8,500.0	90.00	179.59	6,313.0	-1,755.05	-3,344.7	-439.3	3,367.4	0.00	0.00	0.00
8,600.0	90.00	179.59	6,313.0	-1,755.05	-3,444.7	-438.6	3,467.1	0.00	0.00	0.00
8,700.0	90.00	179.59	6,313.0	-1,755.05	-3,544.7	-437.9	3,566.8	0.00	0.00	0.00
8,800.0	90.00	179.59	6,313.0	-1,755.05	-3,644.7	-437.2	3,666.5	0.00	0.00	0.00
8,900.0	90.00	179.59	6,313.0	-1,755.05	-3,744.7	-436.5	3,766.2	0.00	0.00	0.00
9,000.0	90.00	179.59	6,313.0	-1,755.05	-3,844.7	-435.8	3,865.9	0.00	0.00	0.00
9,100.0	90.00	179.59	6,313.0	-1,755.05	-3,944.7	-435.0	3,965.6	0.00	0.00	0.00

Planning Report



Database:	EDM 5000.1 Single User Db	Local Co-ordinate Reference:	Well NORTH PLATTE 21-24-34HNB
Company:	BONANZA CREEK ENERGY INC.	TVD Reference:	KB-EST @ 4558.0usft (Original Well Elev)
Project:	WELD COUNTY, COLORADO (NAD 83)	MD Reference:	KB-EST @ 4558.0usft (Original Well Elev)
Site:	SE SW SEC. 27 T5N R63W 6th P.M.	North Reference:	True
Well:	NORTH PLATTE 21-24-34HNB	Survey Calculation Method:	Minimum Curvature
Wellbore:	ORIGINAL WELLBORE		
Design:	PROPOSAL #2		

Planned Survey										
MD (usft)	Inc (°)	Azi (°)	TVD (usft)	SS (usft)	+N/-S (usft)	+E/-W (usft)	Vertical Section (usft)	Dogleg Rate (°/100usft)	Build Rate (°/100usft)	Turn Rate (°/100usft)
9,200.0	90.00	179.59	6,313.0	-1,755.05	-4,044.7	-434.3	4,065.3	0.00	0.00	0.00
9,300.0	90.00	179.59	6,313.0	-1,755.05	-4,144.7	-433.6	4,165.0	0.00	0.00	0.00
9,400.0	90.00	179.59	6,313.0	-1,755.05	-4,244.7	-432.9	4,264.7	0.00	0.00	0.00
9,500.0	90.00	179.59	6,313.0	-1,755.05	-4,344.7	-432.2	4,364.4	0.00	0.00	0.00
9,600.0	90.00	179.59	6,313.0	-1,755.05	-4,444.7	-431.5	4,464.1	0.00	0.00	0.00
9,700.0	90.00	179.59	6,313.0	-1,755.05	-4,544.7	-430.8	4,563.8	0.00	0.00	0.00
9,800.0	90.00	179.59	6,313.0	-1,755.05	-4,644.7	-430.0	4,663.5	0.00	0.00	0.00
9,900.0	90.00	179.59	6,313.0	-1,755.05	-4,744.7	-429.3	4,763.2	0.00	0.00	0.00
10,000.0	90.00	179.59	6,313.0	-1,755.05	-4,844.7	-428.6	4,862.9	0.00	0.00	0.00
10,100.0	90.00	179.59	6,313.0	-1,755.05	-4,944.7	-427.9	4,962.6	0.00	0.00	0.00
10,200.0	90.00	179.59	6,313.0	-1,755.05	-5,044.7	-427.2	5,062.3	0.00	0.00	0.00
10,300.0	90.00	179.59	6,313.0	-1,755.05	-5,144.7	-426.5	5,162.0	0.00	0.00	0.00
10,400.0	90.00	179.59	6,313.0	-1,755.05	-5,244.7	-425.7	5,261.7	0.00	0.00	0.00
10,500.0	90.00	179.59	6,313.0	-1,755.05	-5,344.7	-425.0	5,361.4	0.00	0.00	0.00
10,600.0	90.00	179.59	6,313.0	-1,755.05	-5,444.7	-424.3	5,461.1	0.00	0.00	0.00
10,700.0	90.00	179.59	6,313.0	-1,755.05	-5,544.7	-423.6	5,560.7	0.00	0.00	0.00
10,800.0	90.00	179.59	6,313.0	-1,755.05	-5,644.7	-422.9	5,660.4	0.00	0.00	0.00
10,900.0	90.00	179.59	6,313.0	-1,755.05	-5,744.7	-422.2	5,760.1	0.00	0.00	0.00
11,000.0	90.00	179.59	6,313.0	-1,755.05	-5,844.7	-421.5	5,859.8	0.00	0.00	0.00
BHL - NORTH PLATTE 21-24-34HNB										
11,082.6	90.00	179.59	6,313.0	-1,755.00	-5,927.3	-420.9	5,942.2	0.00	0.00	0.00

Plan Annotations					
MD (usft)	TVD (usft)	Local Coordinates		Comment	
		+N/-S (usft)	+E/-W (usft)		
600.0	600.0	0.0	0.0	START NUDGE (2°/100ft BUR)	
1,335.3	1,327.3	-86.4	-36.7	EOB TO 14.71° INC	
5,186.6	5,052.4	-986.3	-418.9	END OF TANGENT	
5,922.0	5,779.7	-1,072.7	-455.6	EOD TO VERTICAL	
5,952.0	5,809.7	-1,072.7	-455.6	KOP (12°/100ft BUR)	
6,577.0	6,270.9	-1,426.6	-453.1	START OF TANGENT	
6,677.0	6,296.8	-1,523.2	-452.4	END OF TANGENT	
6,802.0	6,313.0	-1,646.7	-451.5	7" ICP - NORTH PLATTE 21-24-34HNB	
11,082.6	6,313.0	-5,927.3	-420.9	BHL - NORTH PLATTE 21-24-34HNB	