

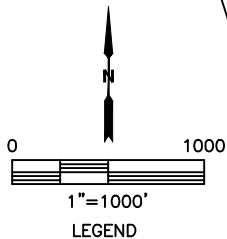
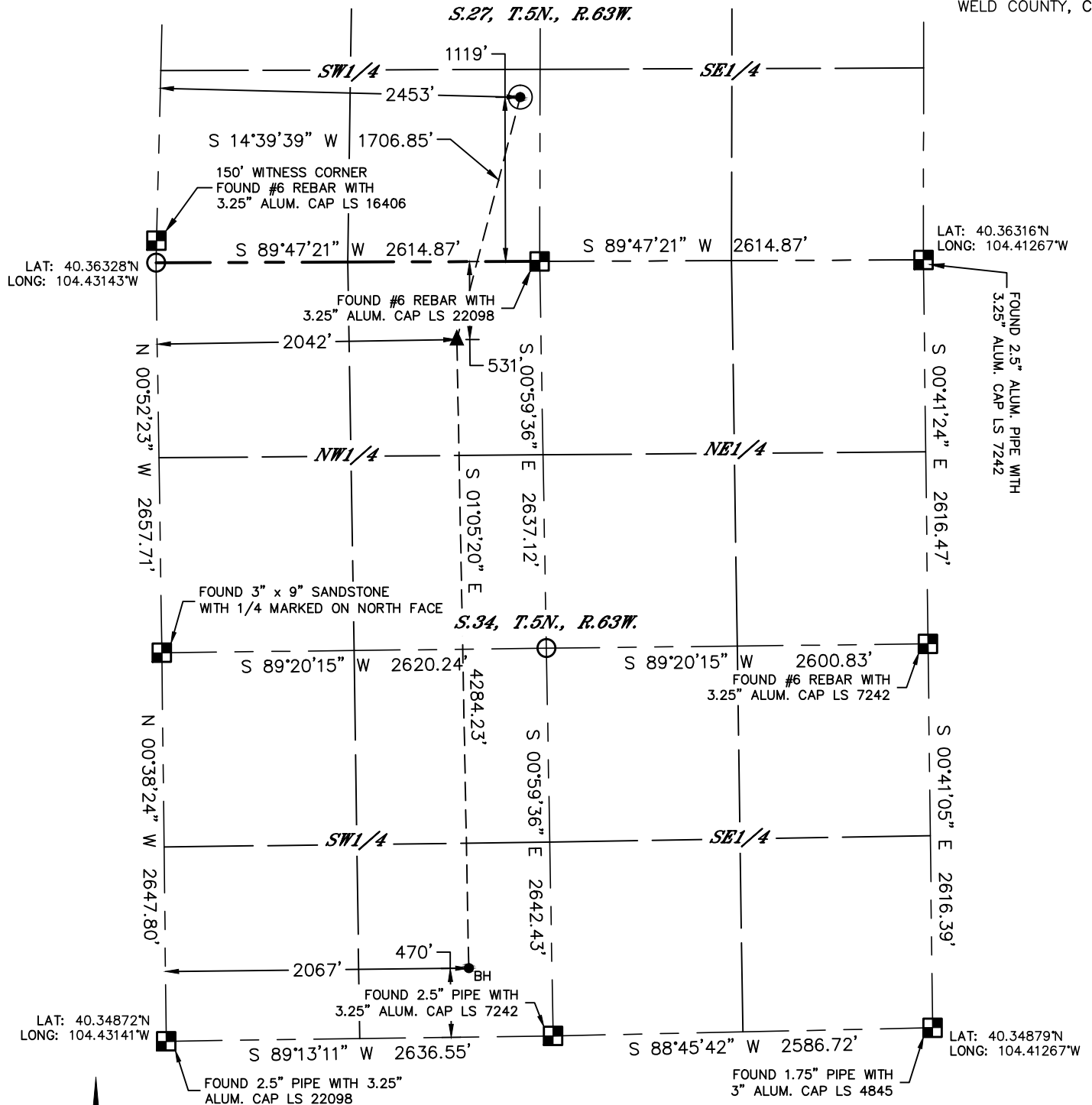


Lat40°, Inc. 6250 W. 10th Street, Unit 2, Greeley, CO 970-515-5294

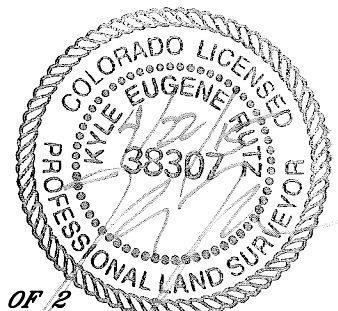
# WELL LOCATION CERTIFICATE

**NORTH PLATTE 21-24-34HNB**

SECTION: 27  
TOWNSHIP: 5N  
RANGE: 63W  
6TH. P.M.  
WELD COUNTY, CO



- LEGEND**
- = ALIQUOT MONUMENT AS DESCRIBED
  - = CALCULATED POSITION
  - = SURFACE HOLE LOCATION (SHL)
  - ▲ = ENTRY POINT LOCATION (EP)
  - <sub>BH</sub> = BOTTOM HOLE LOCATION (BHL)



**SHEET 2 OF 2**

Kyle E. Rutz—On behalf of Lat40°, Inc.  
Colorado Licensed Professional Land Surveyor No. 38307  
DATE: rev4/22/2015  
PROJECT#: 2014227