



Scale 1:240 (5"=100') Imperial
Measured Depth Log

Well Name: Butterball 16C-10HZ
API: 05123409890000
Location: Weld County, CO.
License Number:
Spud Date: 4/2/2015
Surface Coordinates: 657'FNL & 1489'FEL, SEC.10
Region: DJ Basin
Drilling Completed: 5/5/2015
Bottom Hole Coordinates: 110'FSL & 788'FEL, SEC.10
Ground Elevation (ft): 4920' K.B. Elevation (ft): 4936'
Logged Interval (ft): 7350' To: 13193' Total Depth (ft): 13193'
Formation: Codell
Type of Drilling Fluid: Synthetic Base Mud

Printed by HORIZONTAL.LOG from WellSight Systems 1-800-447-1534 www.WellSight.com

OPERATOR

Company: Anadarko Petroleum Corporation
Address: 1099 18th Street, Suite 1800
Denver, CO 80202-1918

GEOLOGIST

Name: Ben Thompson / Walter MacPhee
 Company: Great Divide Consulting, Inc.
 Address: 11990 North Grant Street, Suite 220
 Northglenn, CO 80233

ROCK TYPES

	Anhy		Coal		Lmst		Shale		Till
	Bent		Congl		Meta		Shcol		
	Brec		Dol		Mrleb59		Shgy		
	Cht		Gyp		Mrlst		Sltst		
	Clyst		Igne		Salt		Ss		

ACCESSORIES

MINERAL			FOSSIL						
	Anhy		Gyp		Algae		Ostra		Sltstrg
	Arggrn		Hvymin		Amph		Pelec		Ssstrg
	Arg		Kaol		Belm		Pellet		
	Bent		Marl		Bioclst		Pisolite		
	Bit		Minxl		Brach		Plant		
	Brecfrag		Nodule		Bryozoa		Strom		
	Calc		Phos		Cephal				
	Carb		Pyr		Coral				
	Chtdk		Salt		Crin				
	Chtlt		Sandy		Echin				
	Dol		Silt		Fish				
	Feldspar		Sil		Foram				
	Ferrpel		Sulphur		Fossil				
	Ferr		Tuff		Gastro				
	Glau				Oolite				

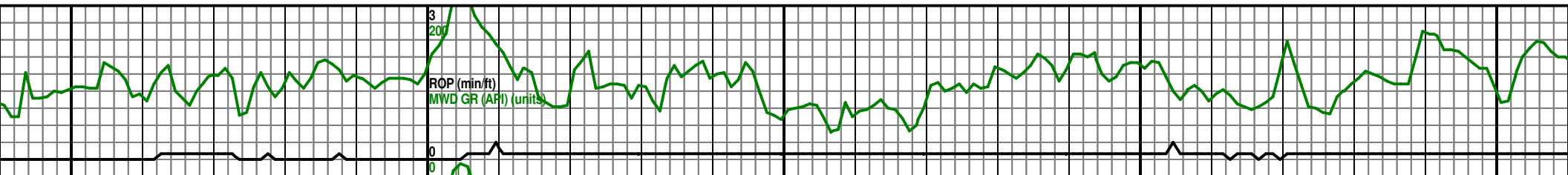
OTHER SYMBOLS

POROSITY									
	Earthly		Vuggy		Rounded		Spotted		Rft
	Fenest				Subrnd		Ques		Sidewall
	Fracture				Subang		Dead		
	Inter				Angular				
	Moldic								
	Organic								
	Pinpoint								

SORTING	
	Well
	Moderate
	Poor

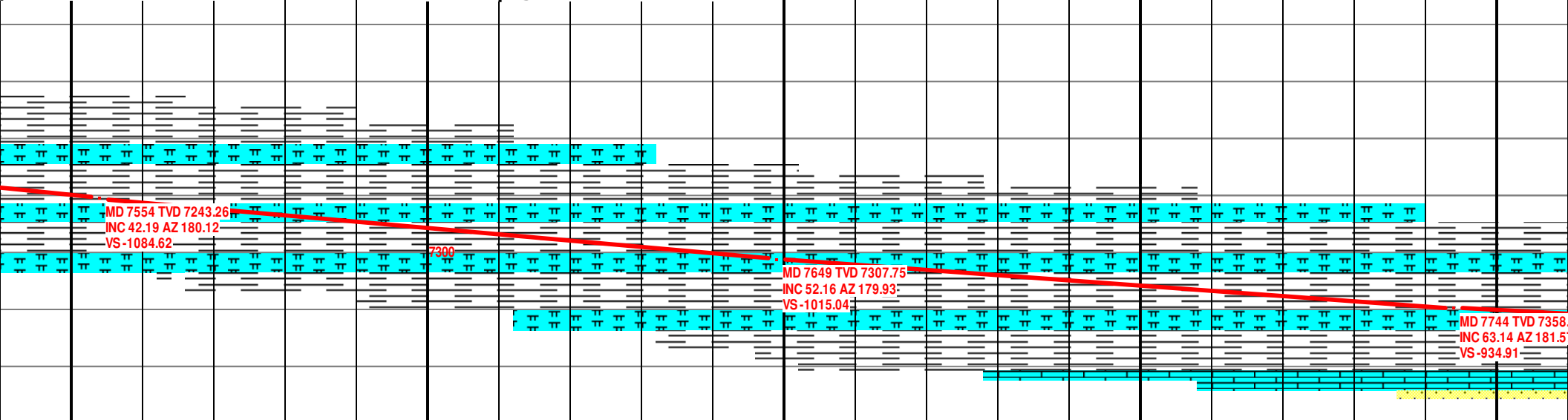
OIL SHOW	
	Even

INTERVAL	
	Core
	Dst



7550 7600 7650 7700 7750

p @ 7526' MD / 7222' TVD Niobrara C Top @ 7610' MD / 7283' TVD

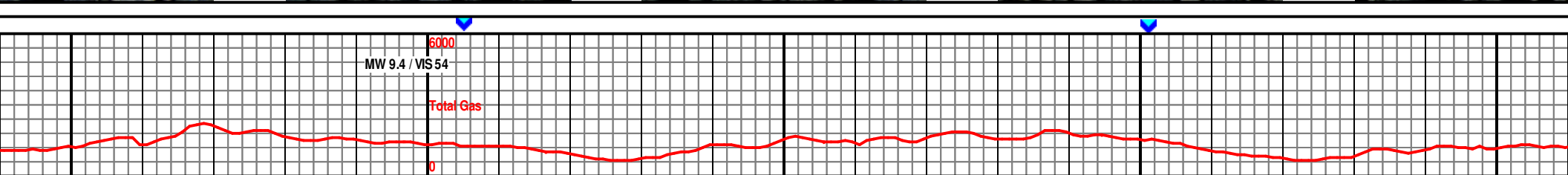


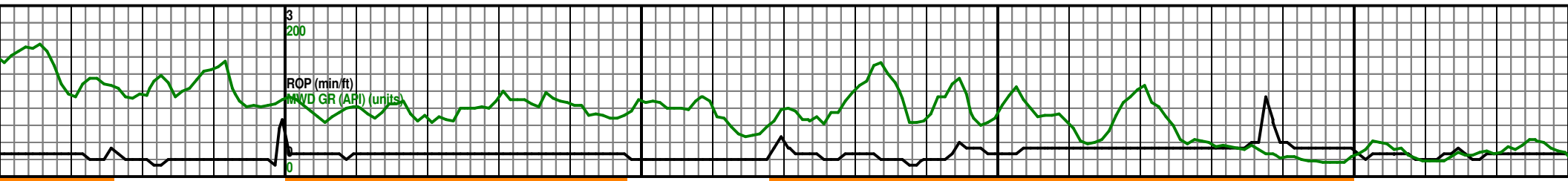
ltgy-gy, wh bnd chk, extr calc, occ shly, frm, sbply, no sfl, fst str wh cut. ltgy-mdgy, v calc, biocl, frm, sbply, no sfl, slw str wh cut. SH 15%: ltgy-gy, wh bnd chk, extr calc, occ intbd biocl, shly, frm, sbply, no sfl, fst str wh cut. SH 5%: gy-drkgy, pty-sbply, slty, sft, v calc.

Mrst 80%: ltgy-mdgy, v calc, abnd intbd biocl, frm, sbply, no sfl, slw str wh cut. SH 15%: ltgy-gy, wh bnd chk, extr calc, occ intbd biocl, shly, frm, sbply, no sfl, fst str wh cut. SH 5%: gy-drkgy, pty-sbply, slty, sft, v calc.

Mrst 50%: ltgy-mdgy, v calc, abnd intbd biocl, frm, sbply, no sfl, slw str wh cut. Chalk 45%: ltgy-gy, wh bnd chk, extr calc, occ intbd biocl, shly, frm, sbply, no sfl, fst str wh cut. SH 5%: gy-drkgy, pty-sbply, slty, sft, v calc.

Mrst 60%: ltgy-mdgy, v calc, abnd intbd biocl, frm, sbply, no sfl, slw str wh cut. Chalk 35%: ltgy-gy, wh bnd chk, extr calc, occ intbd biocl, shly, frm, sbply, no sfl, fst str wh cut. SH 5%: gy-drkgy, pty-sbply, slty, sft, v calc.





7800

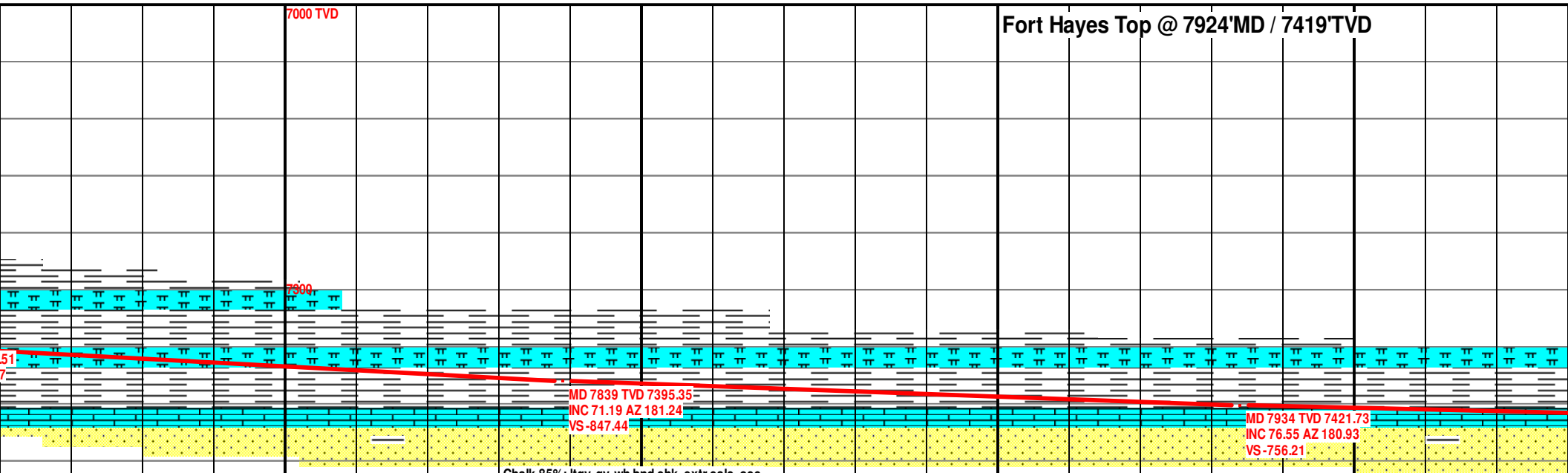
7850

7900

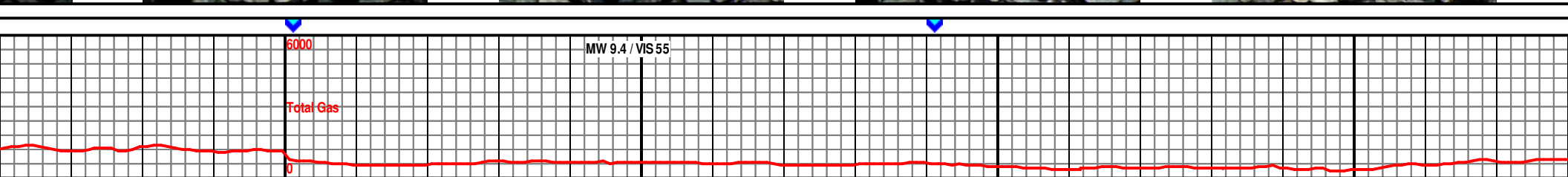
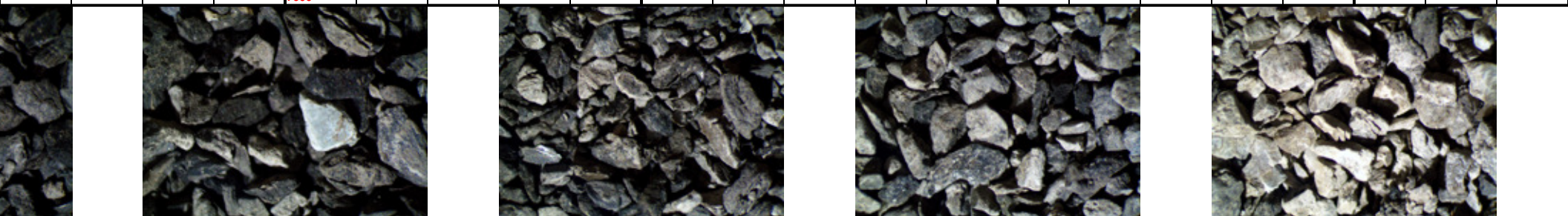
7950

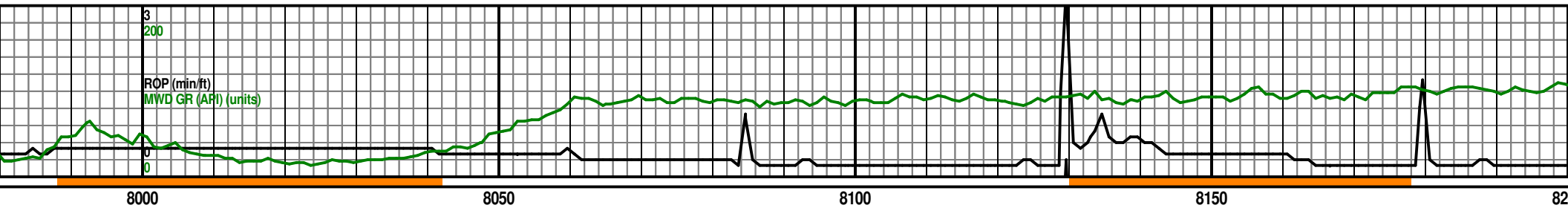
7000 TVD

Fort Hayes Top @ 7924'MD / 7419'TVD



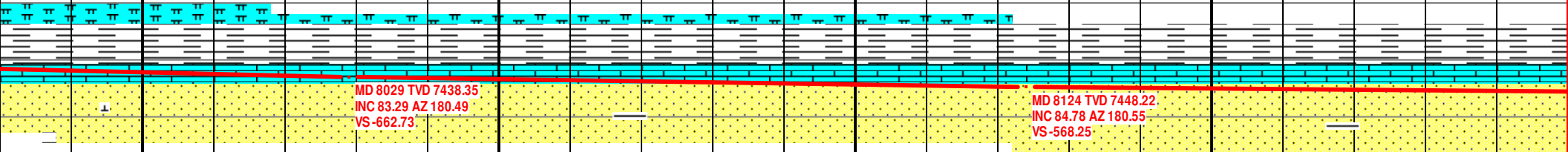
w str wh extr calc, fl, fst str wh y, sft, v calc.	Chalk 50%: ltgy-gy, wh bnd chk, extr calc, occ intbd biocl, shly, frm, sbply, no sfl, fst str wh cut. Mrlst 40%: ltgy-mdgy, v calc, abnd intbd biocl, frm, sbply, no sfl, slw str wh cut. SH 10%: gy-drkgy, pty-sbply, slty, sft, v calc.	Chalk 85%: ltgy-gy, wh bnd chk, extr calc, occ intbd biocl, shly, frm, sbply, no sfl, fst str wh cut. Mrlst 10%: ltgy-mdgy, v calc, intbd biocl, frm, sbply, no sfl, slw str wh cut. SH 5%: gy-drkgy, pty-sbply, slty, sft, v calc.	Chalk 85%: ltgy-gy, wh bnd chk, extr calc, occ intbd biocl, shly, frm, sbply, no sfl, fst str wh cut. Mrlst 10%: ltgy-mdgy, v calc, intbd biocl, frm, sbply, no sfl, slw str wh cut. SH 5%: gy-drkgy, pty-sbply, slty, sft, v calc.	LS 98%: ltgy, blkgy, frm-hrd, v calc, crypxln-mxln, nsf, nsfc. SH 2%: dkgy, pty-sbply, slty, grty, sft, sl cal.
---	---	---	---	---





Codell Top @ 8051'MD / 7441'TVD

Curve TD of 8178' MD Achieved @
10:22PM 4/3/2015. Continue drilling
ahead into the lateral section.

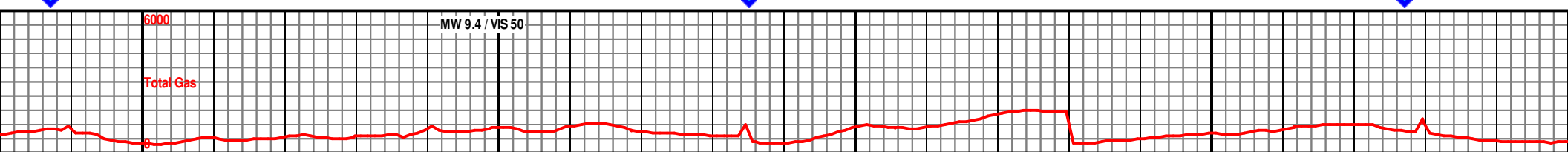


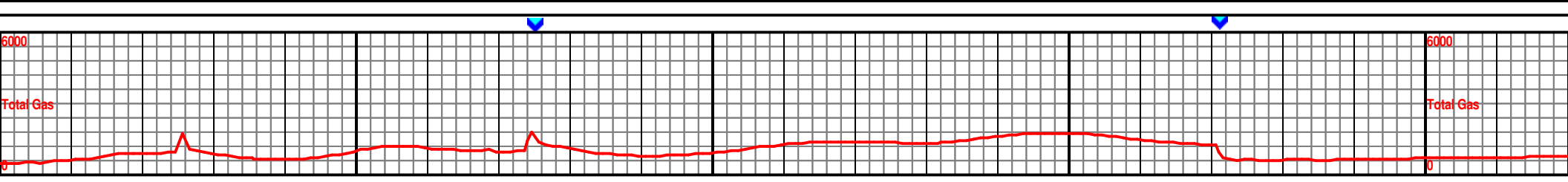
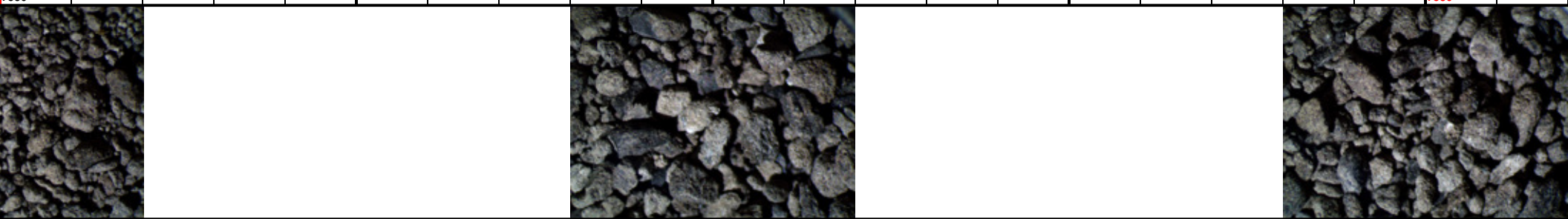
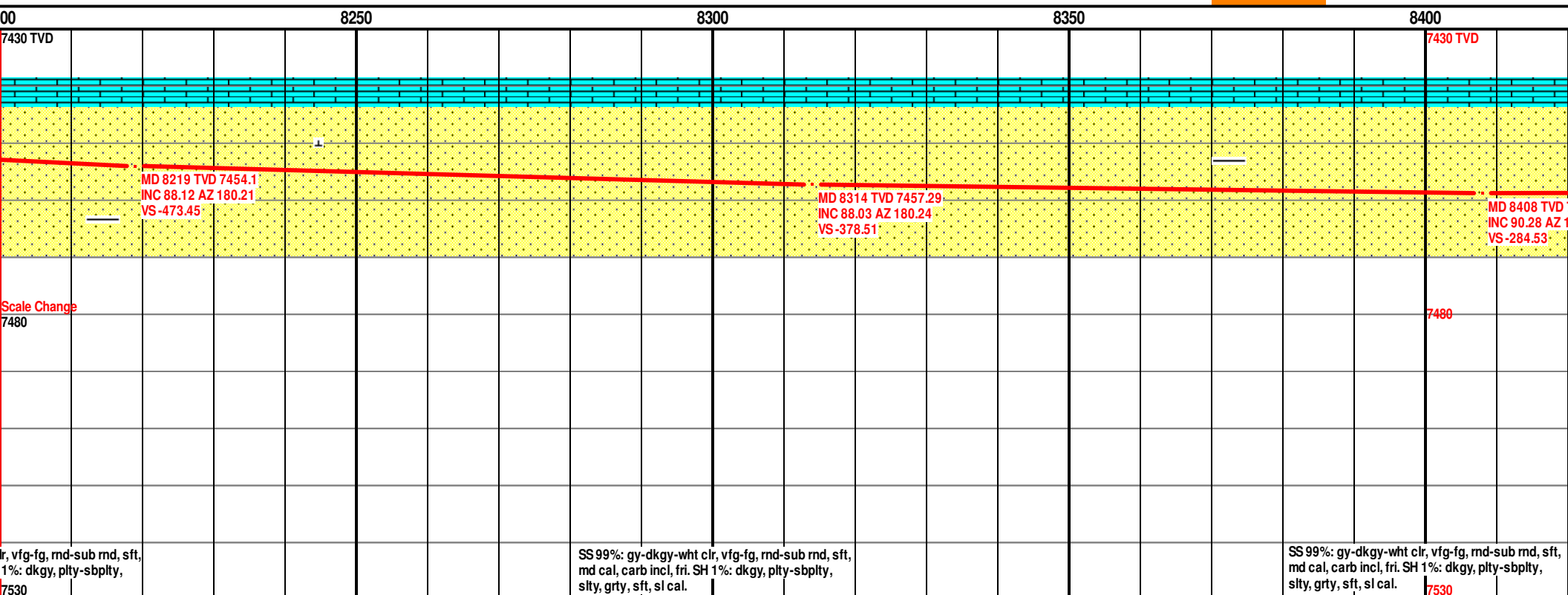
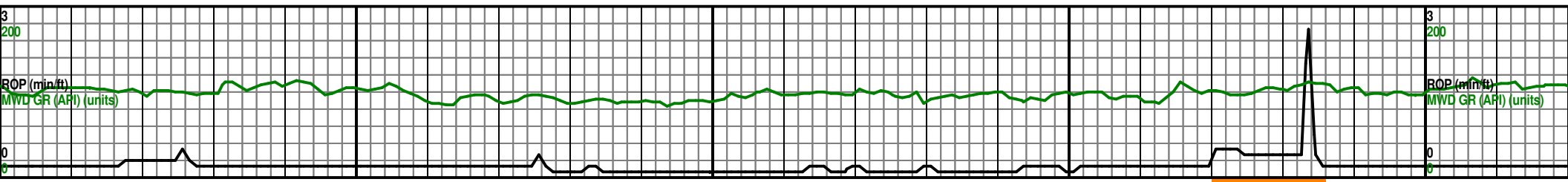
LS 98%: ltgy, blk, frm-hrd, v calc, crypxln-mxln,
nsf, nsfc. SH 2%: dkgy, plty-sbply, slty, grty, sft,
sl cal.

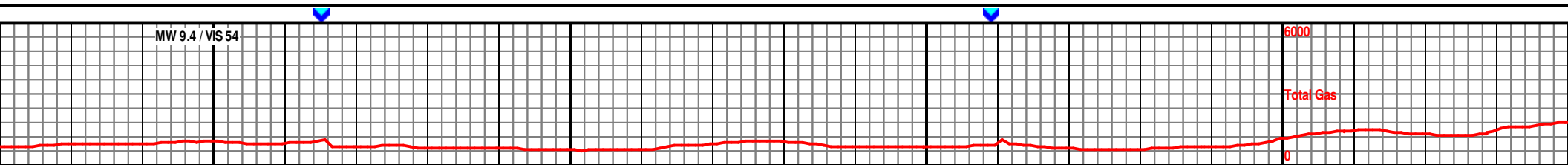
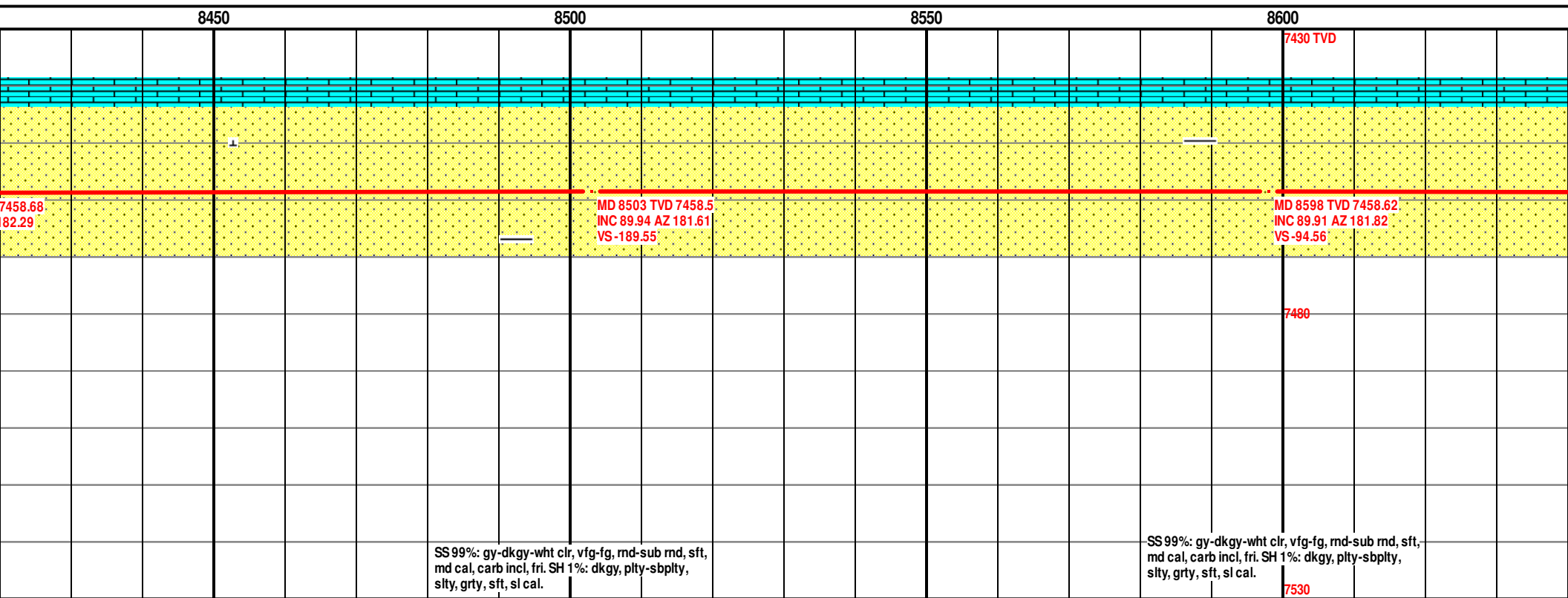
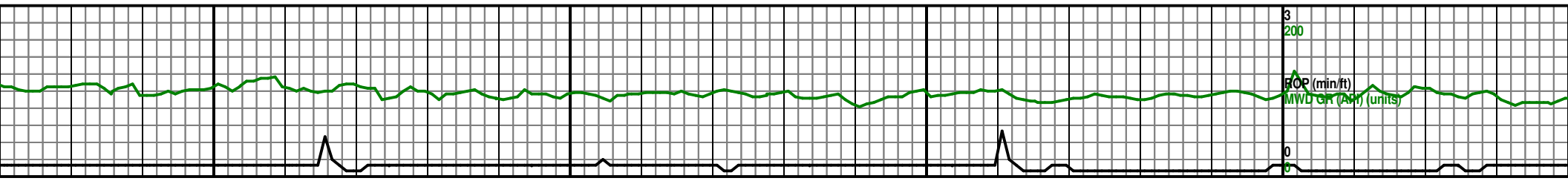
LS 99%: ltgy, blk, frm-hrd, v calc, crypxln-mxln,
nsf, nsfc. SH 1%: dkgy, plty-sbply, slty, grty, sft,
sl cal.

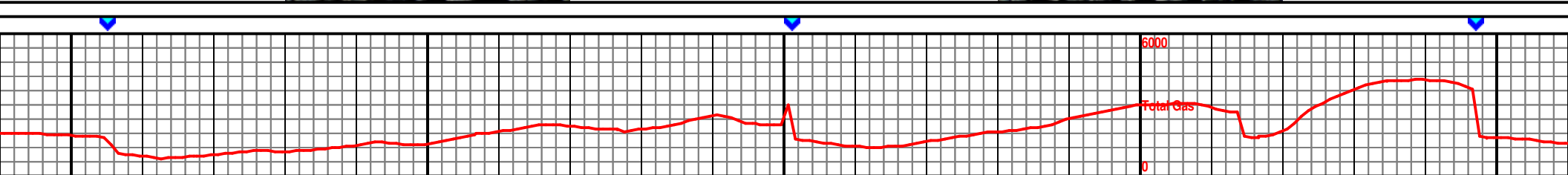
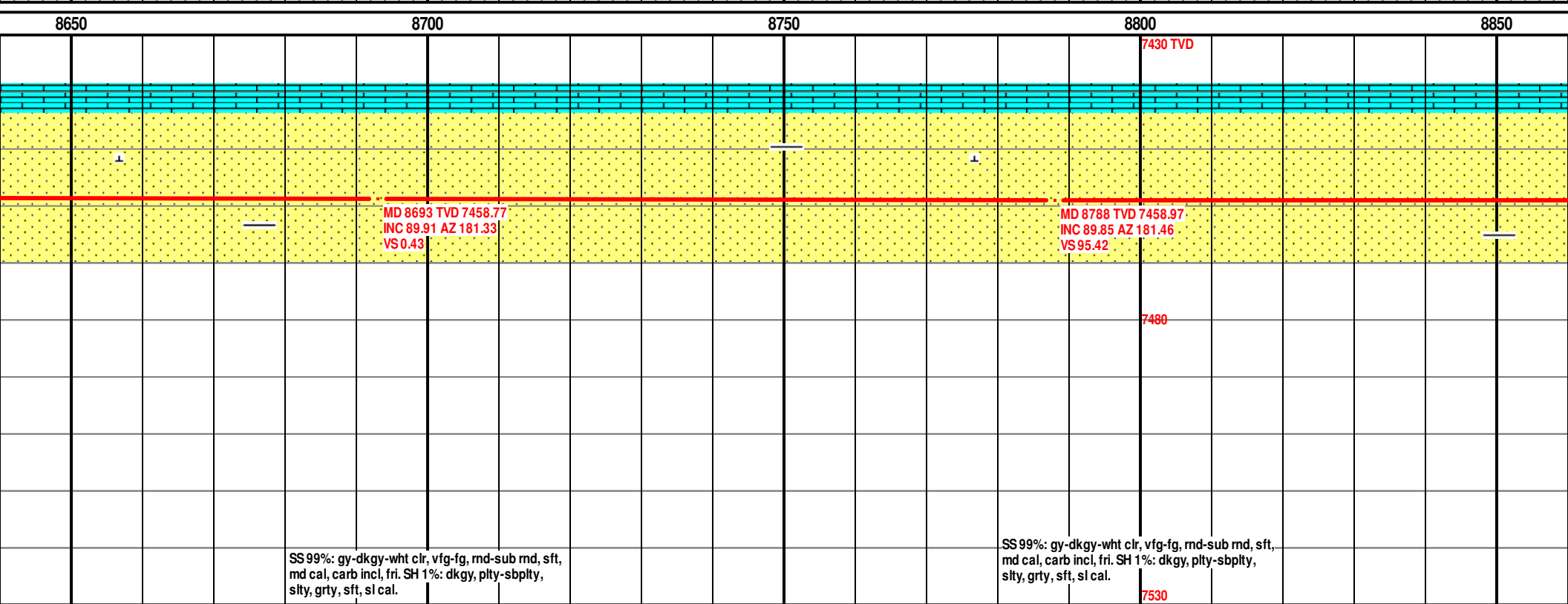
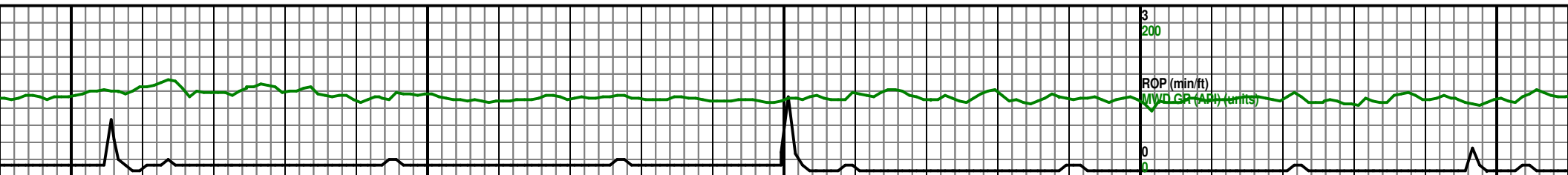
SS 98%: gy-dkgy-wht clr, vfg-fg, rnd-sub rnd, sft,
md cal, carb incl, fri. SH 2%: dkgy, plty-sbply,
slty, grty, sft, sl cal.

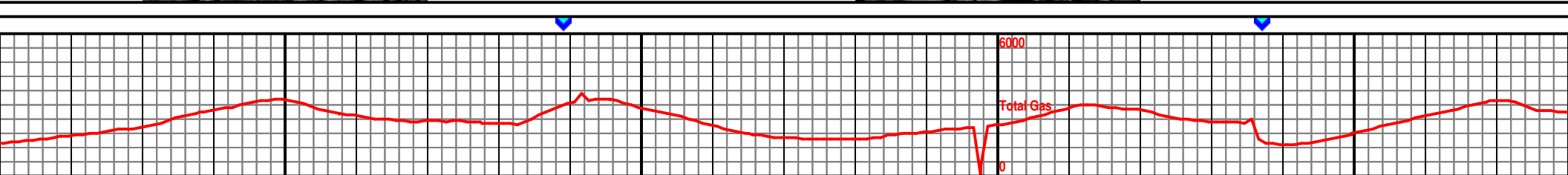
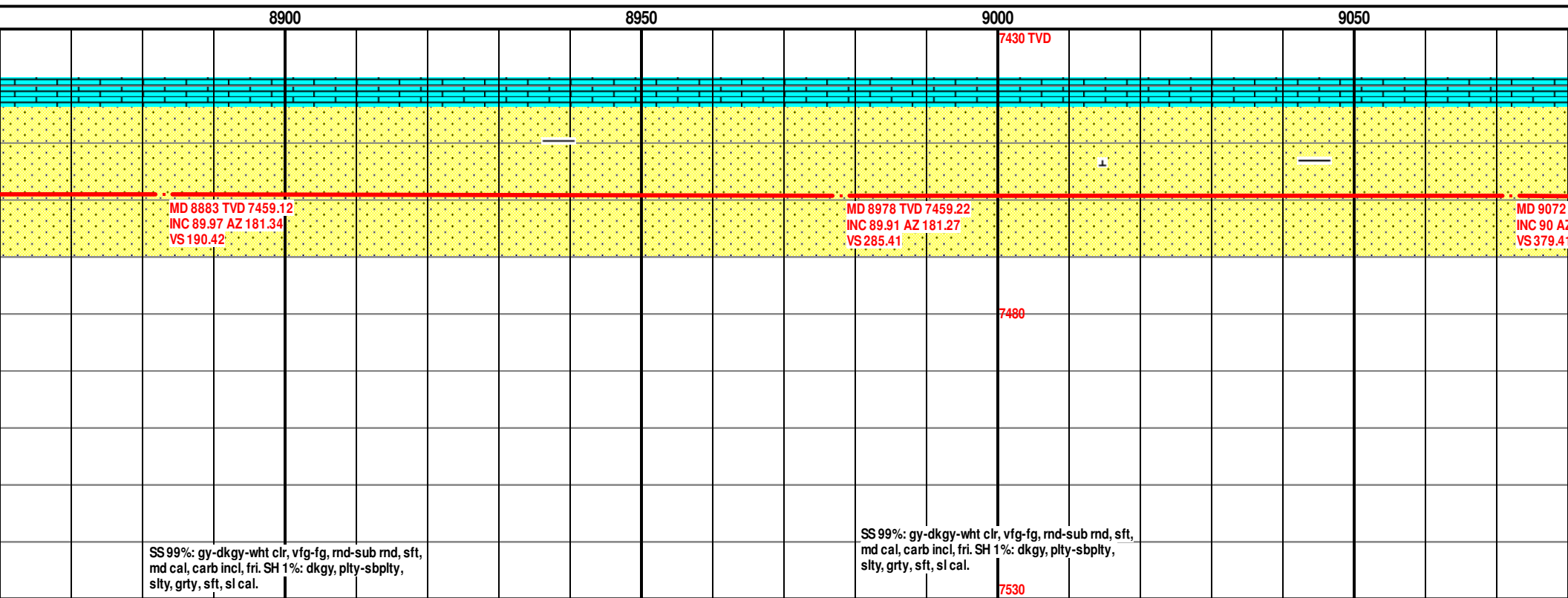
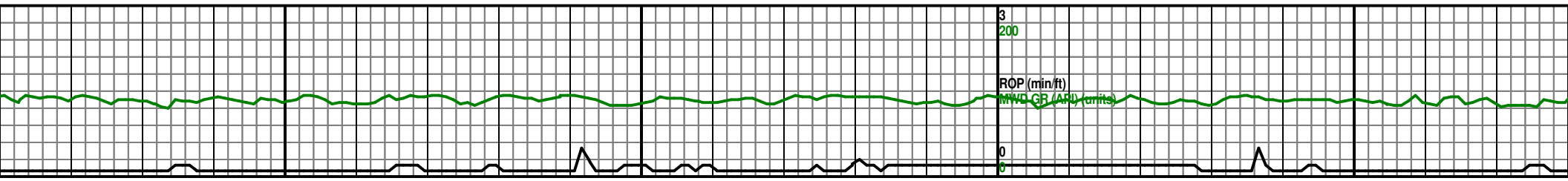
SS 99%: gy-dkgy-wht cl,
md cal, carb incl, fri. SH
slty, grty, sft, sl cal.

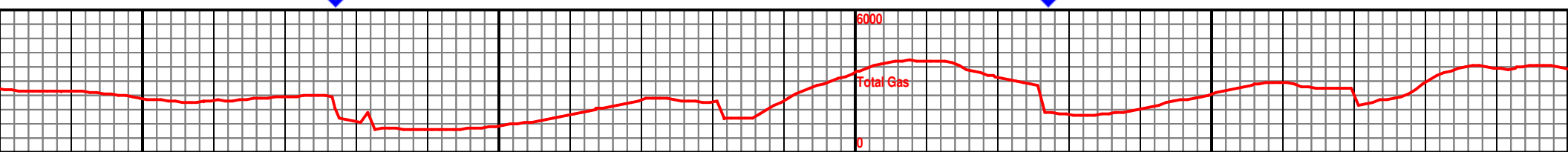
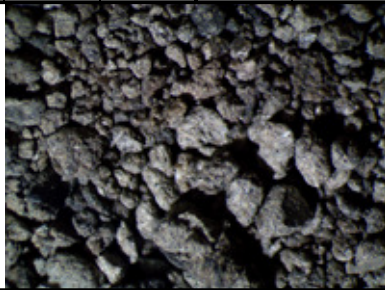
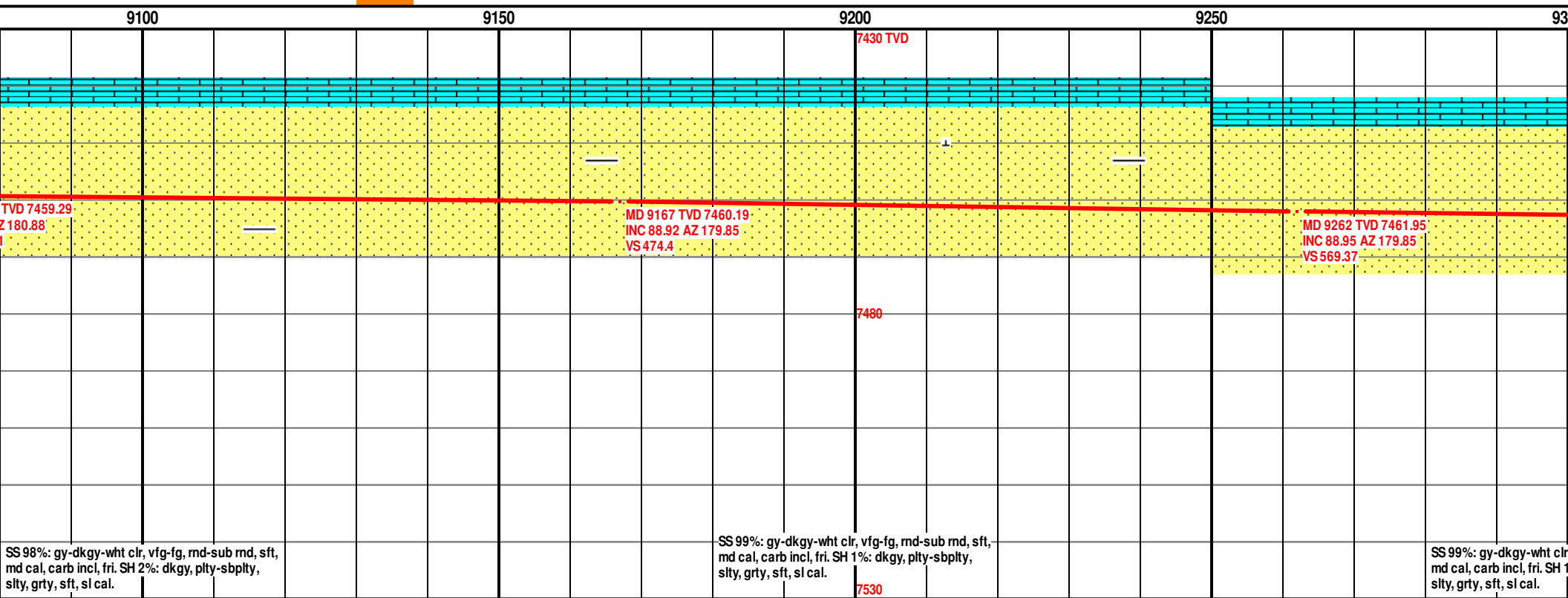
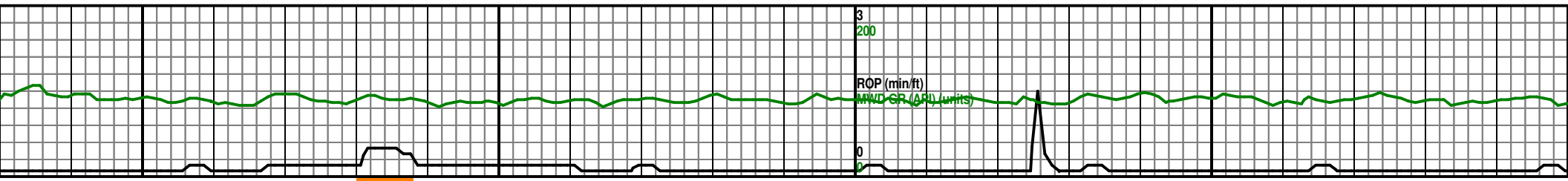


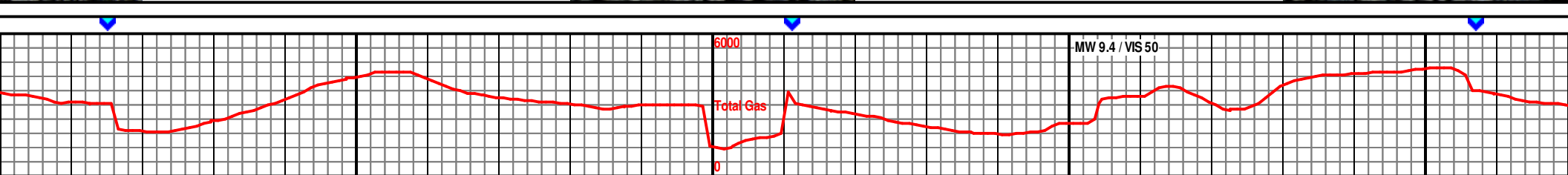
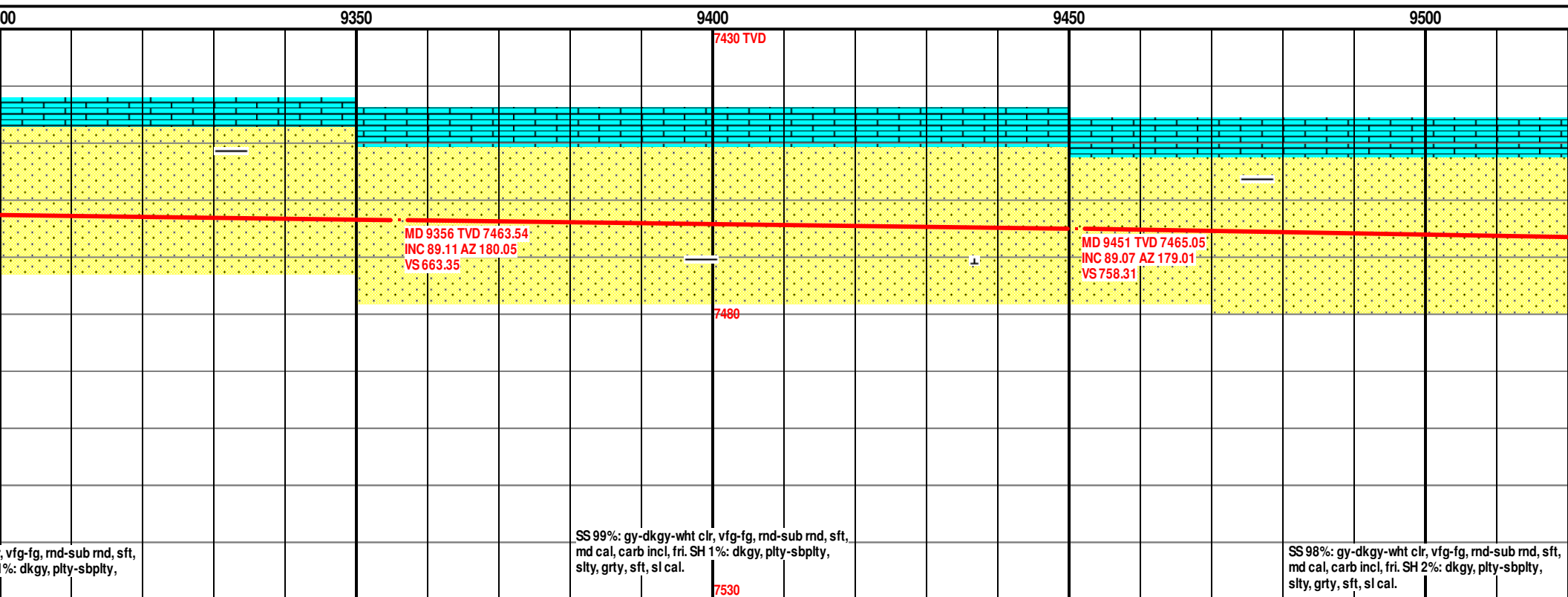
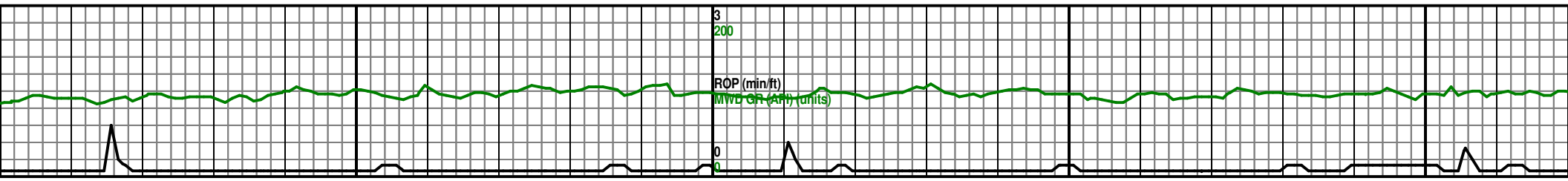


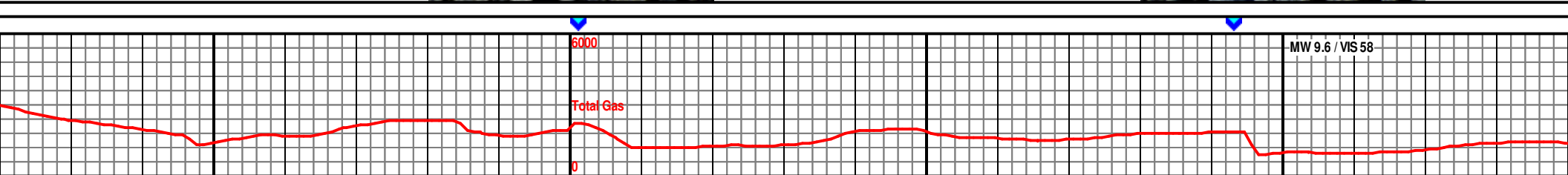
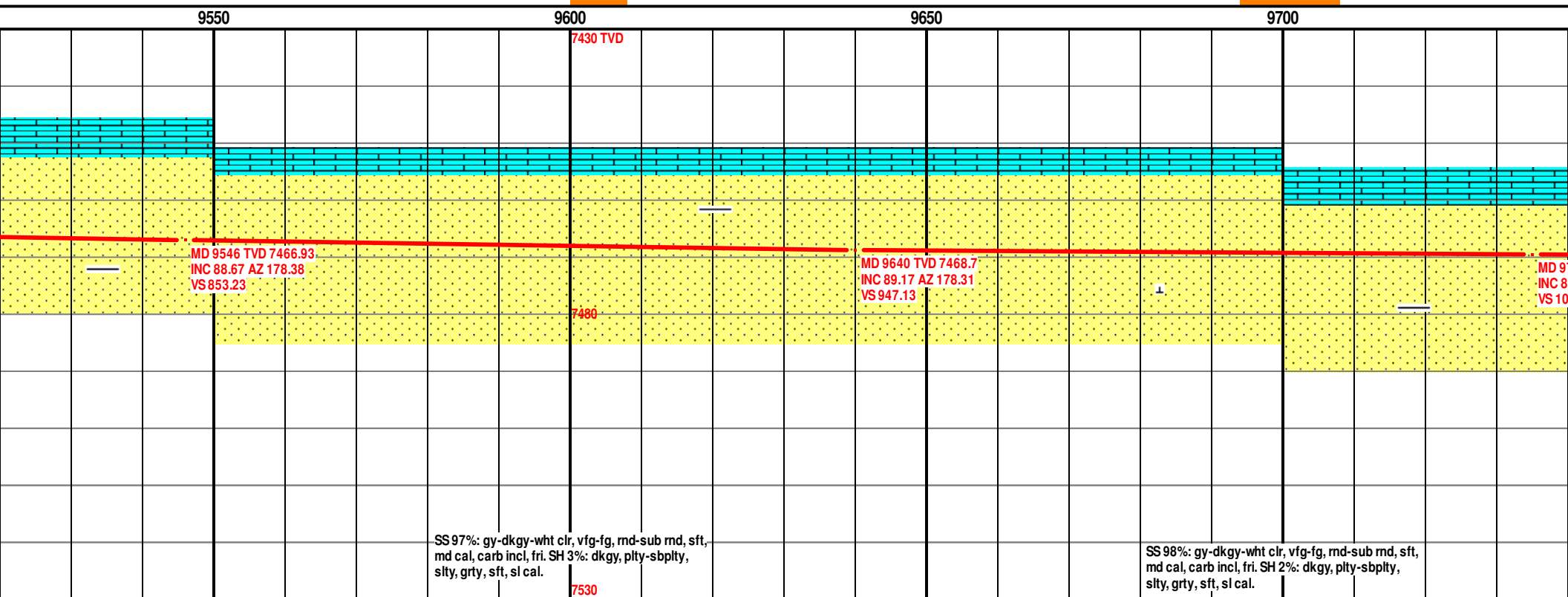
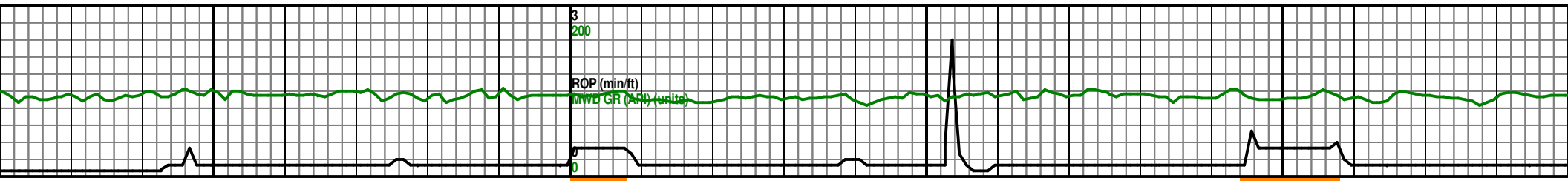


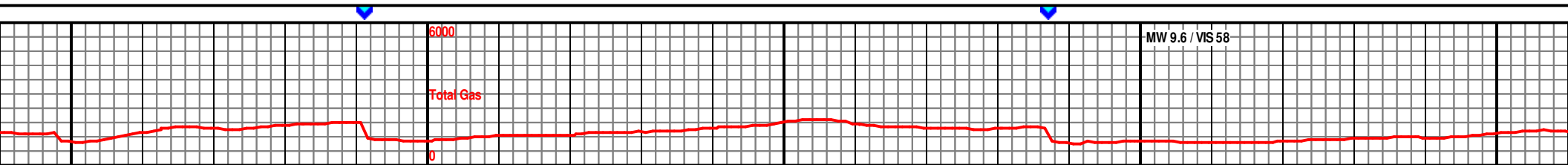
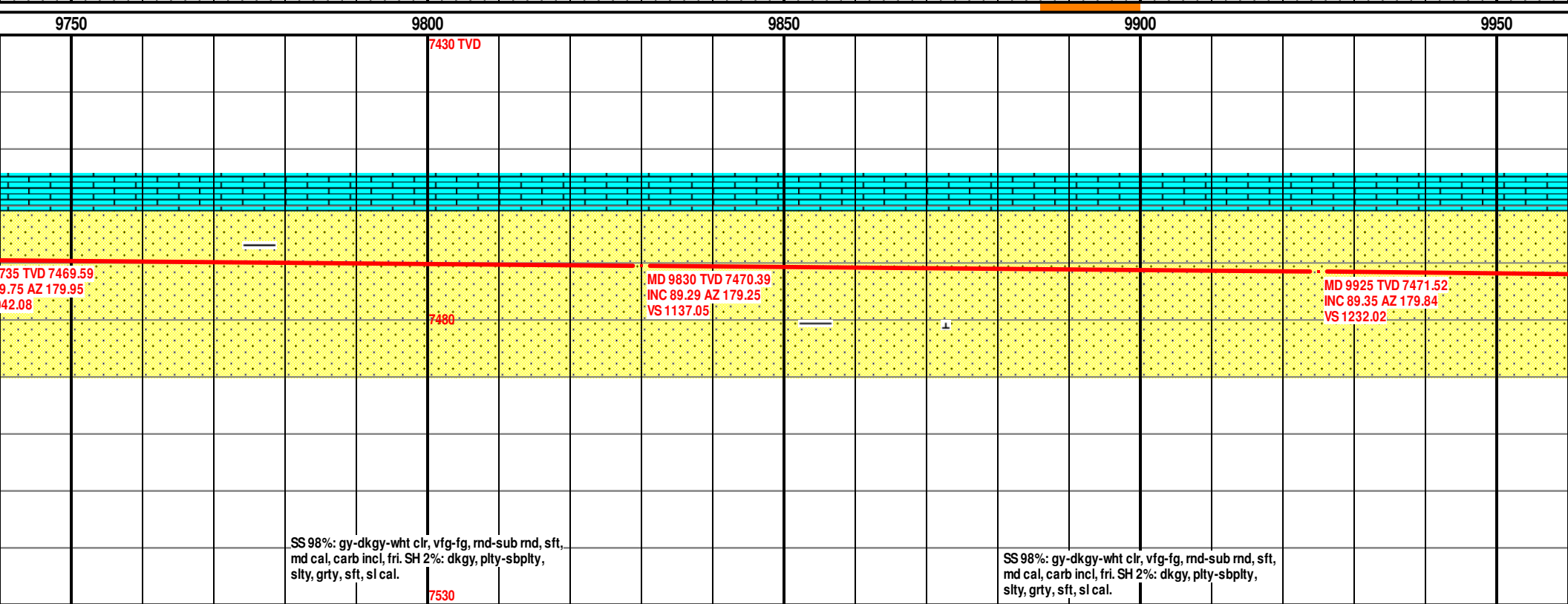
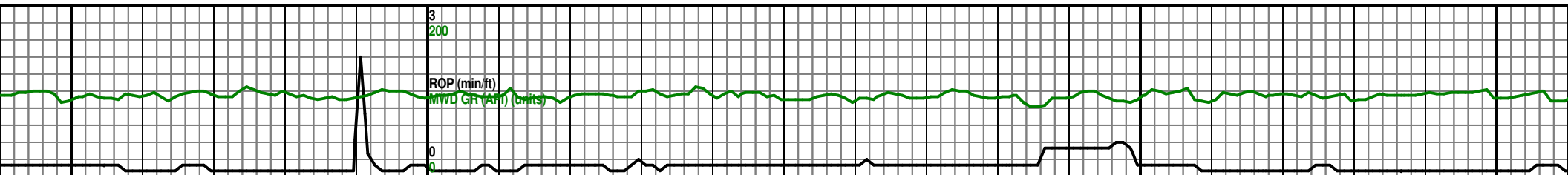


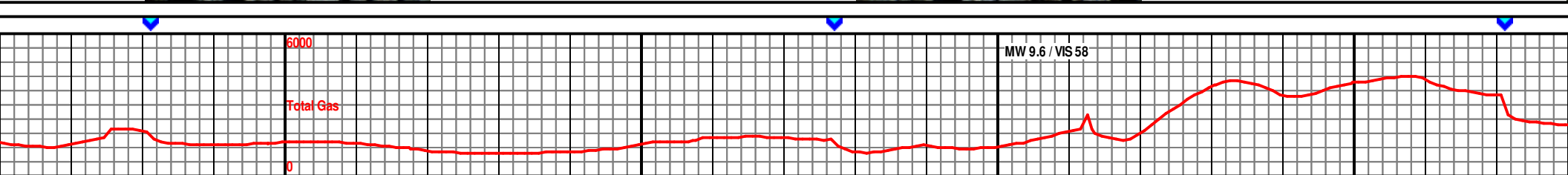
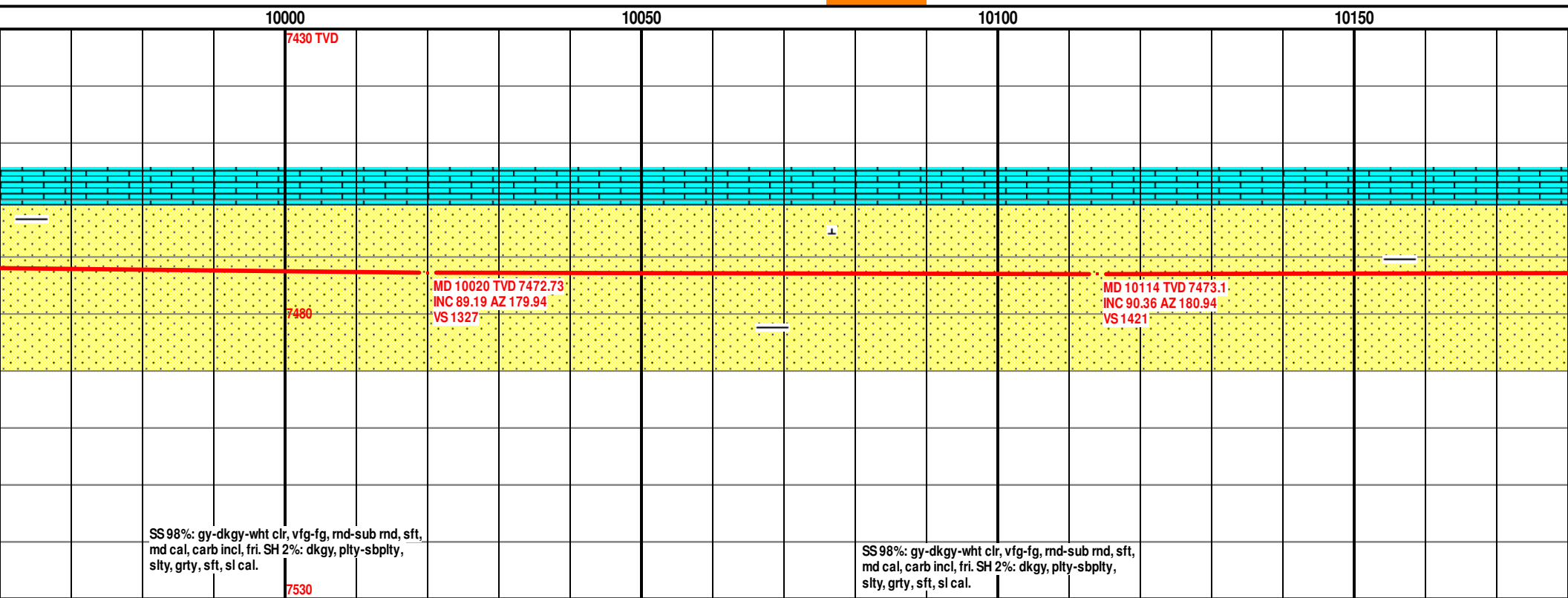
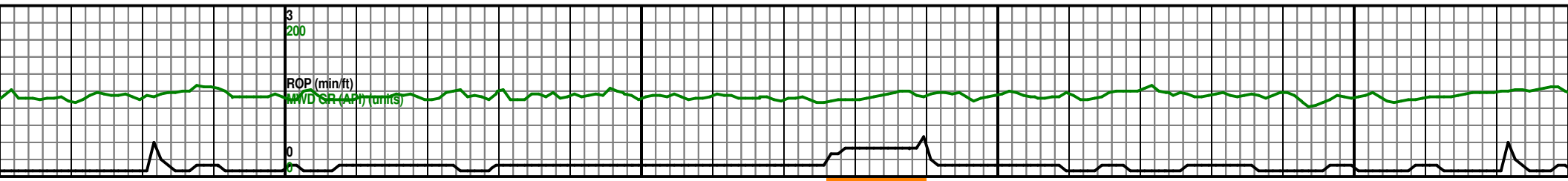


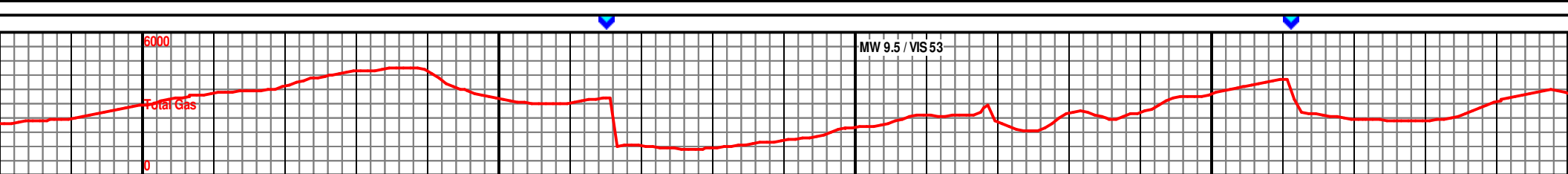
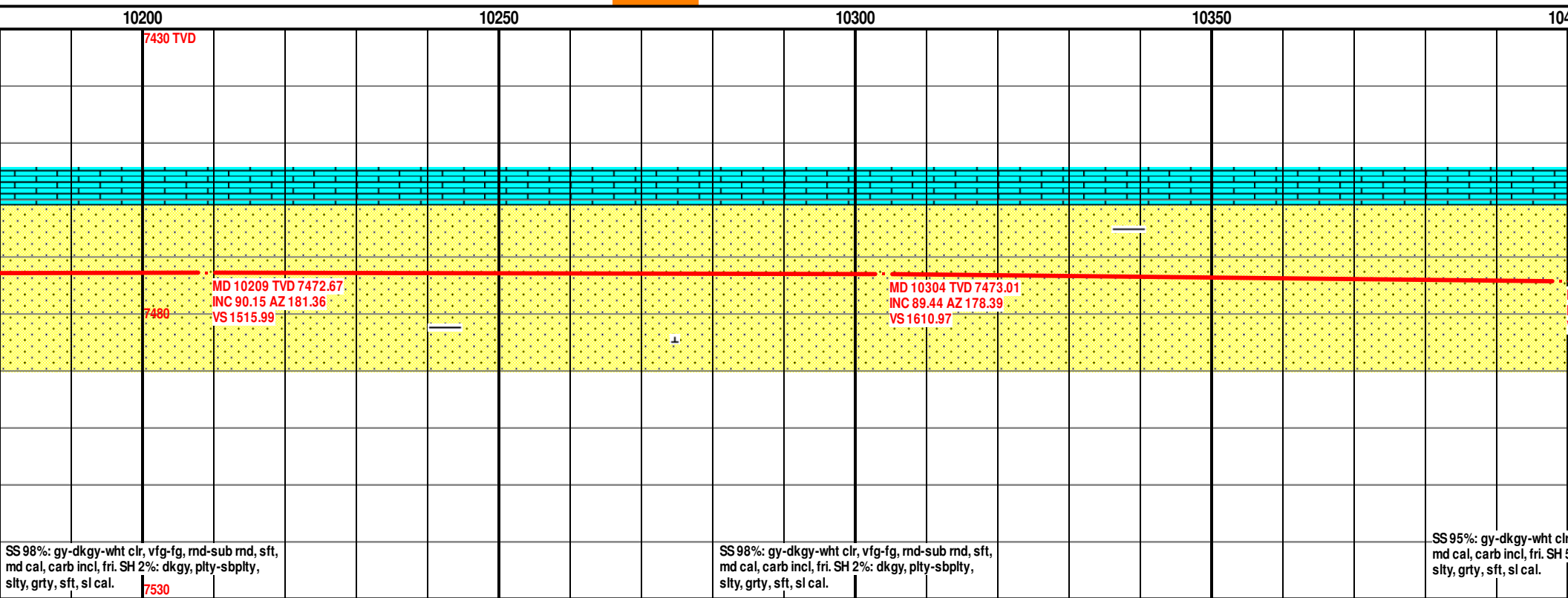
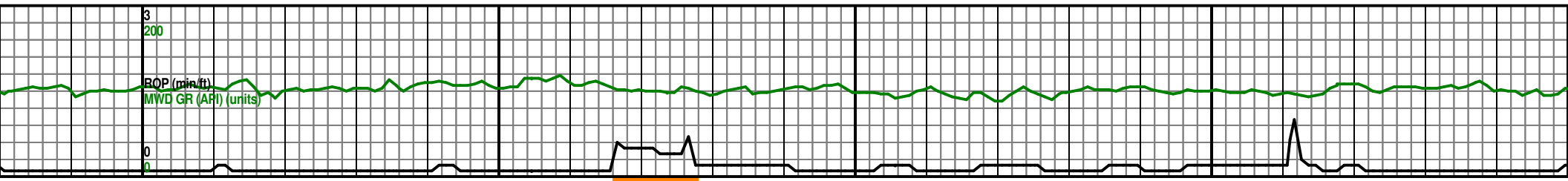


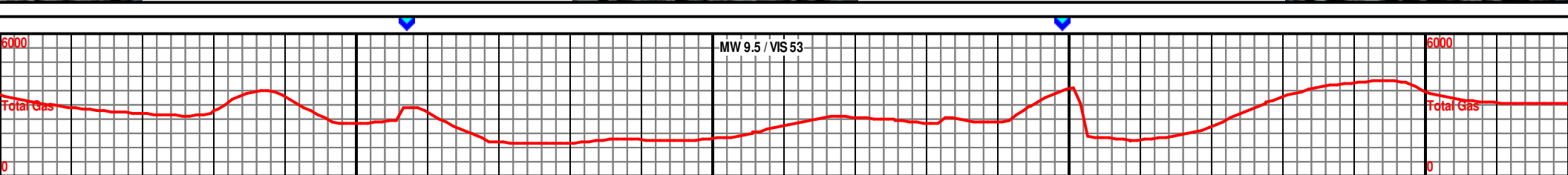
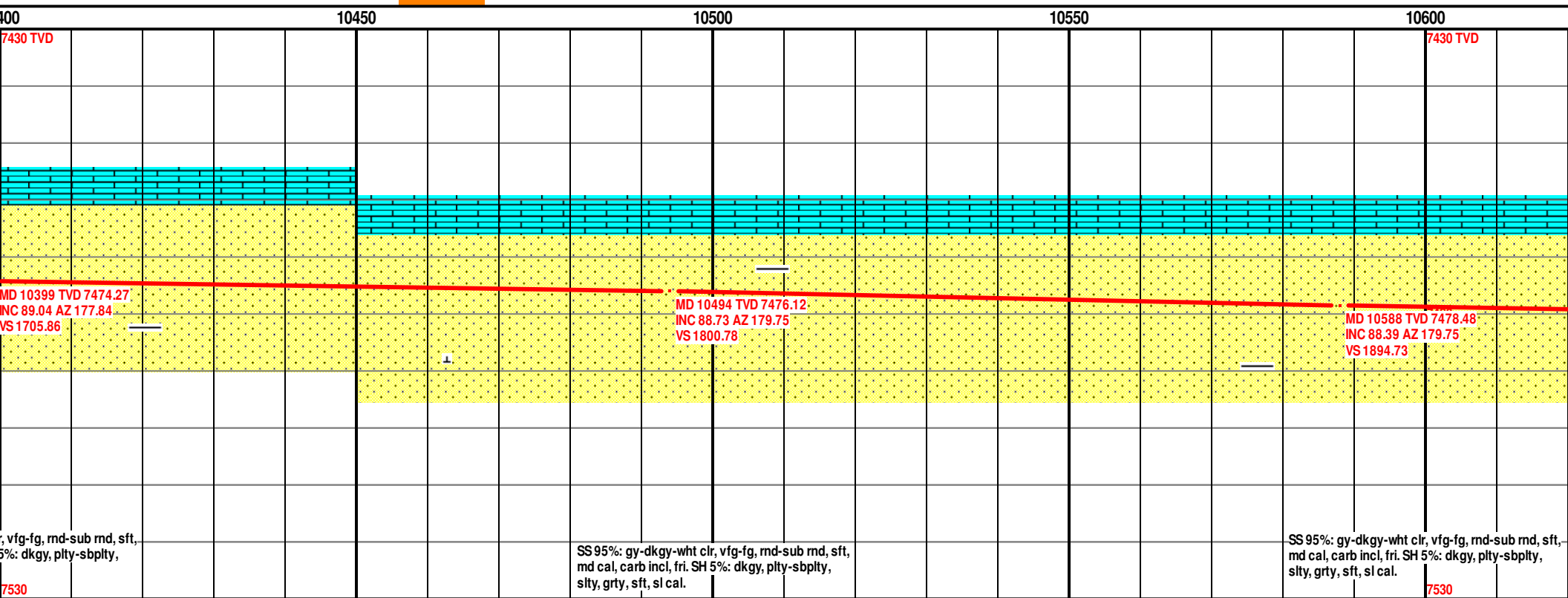
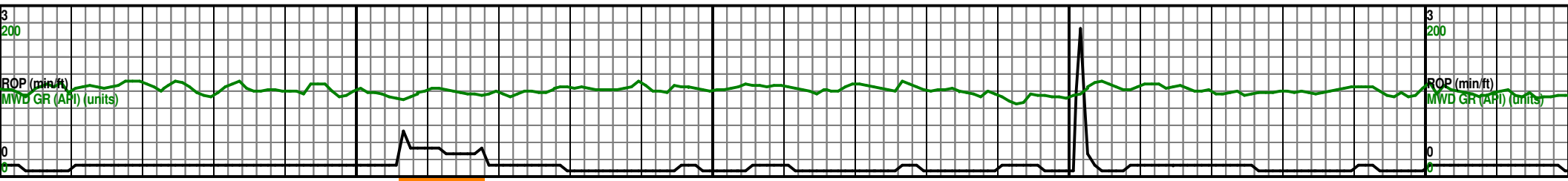


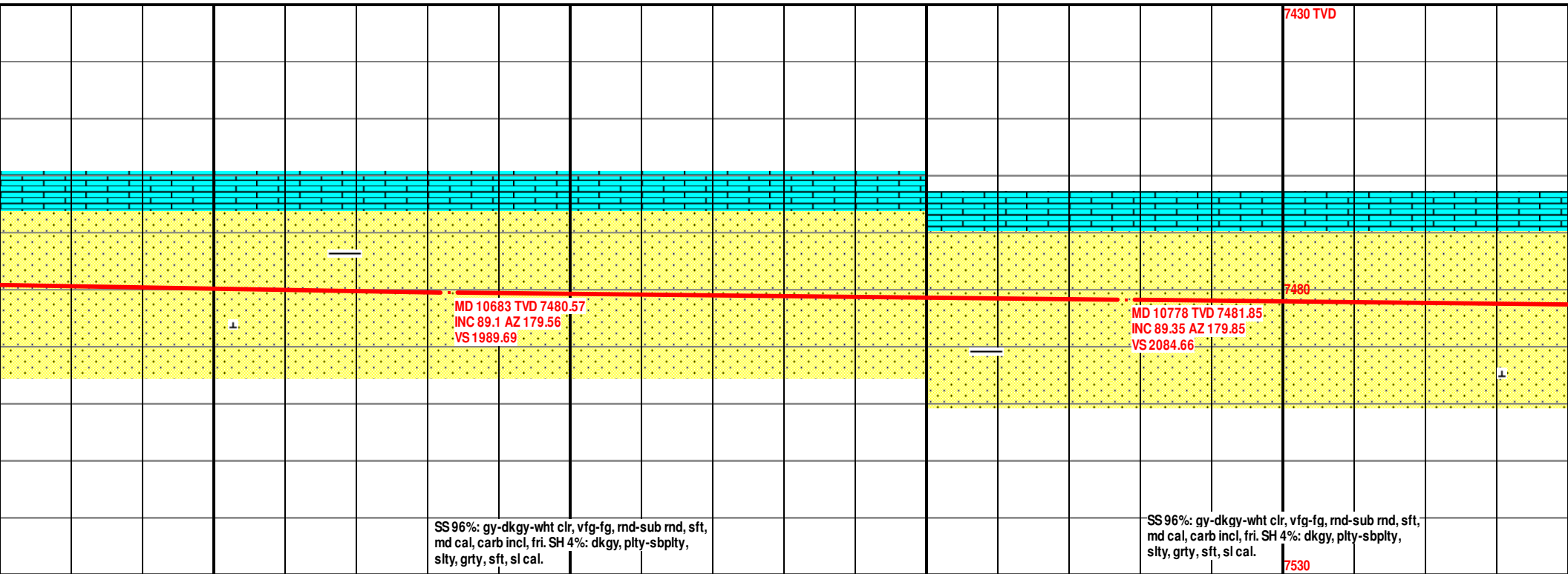
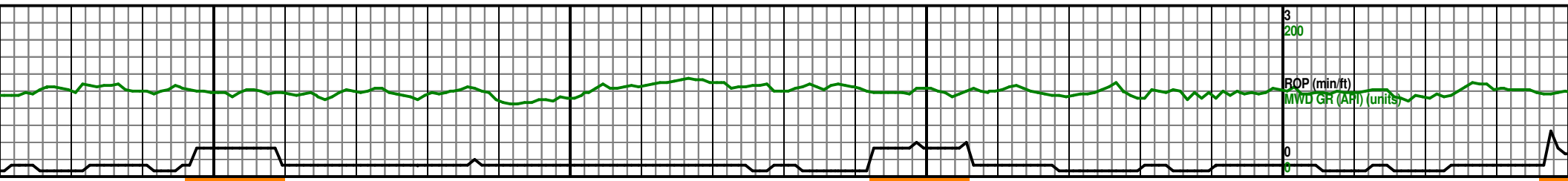






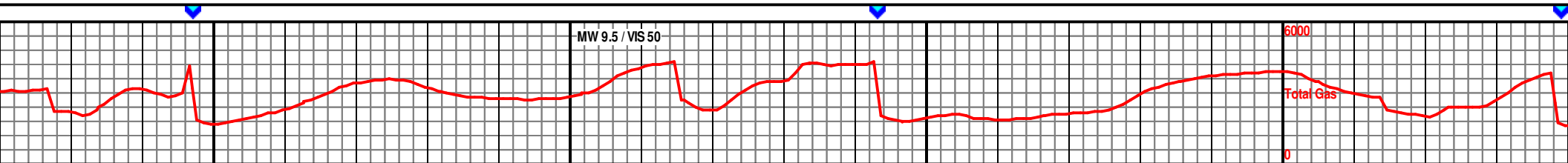


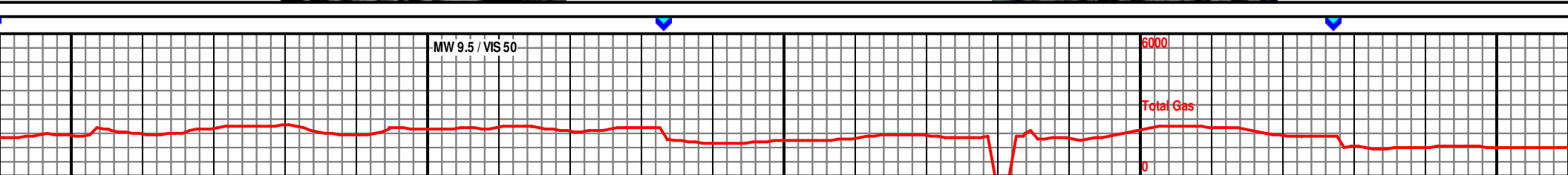
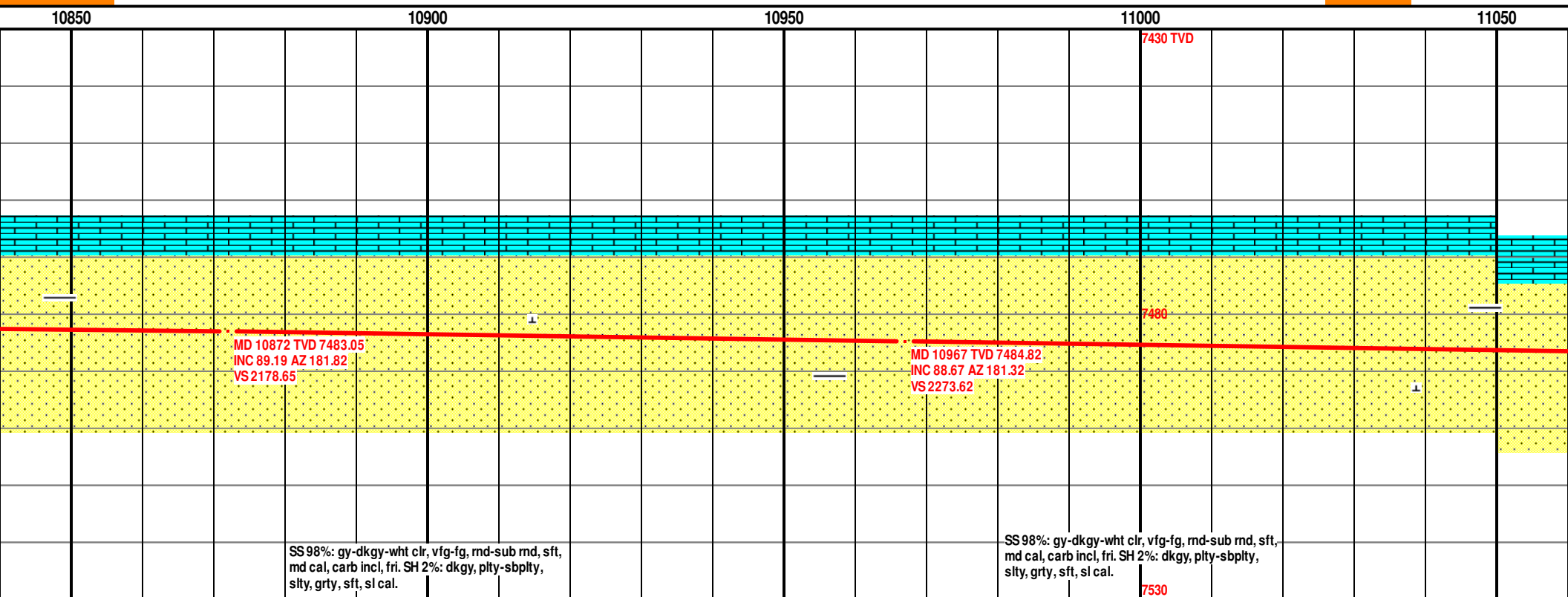
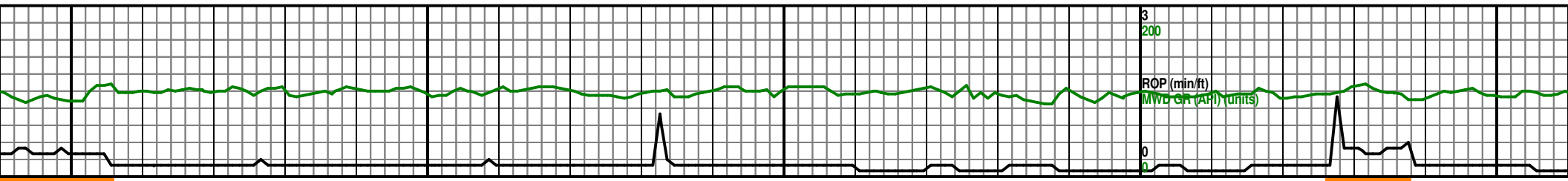


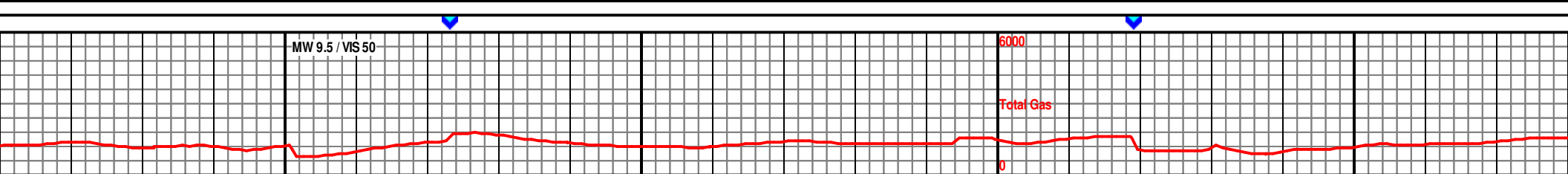
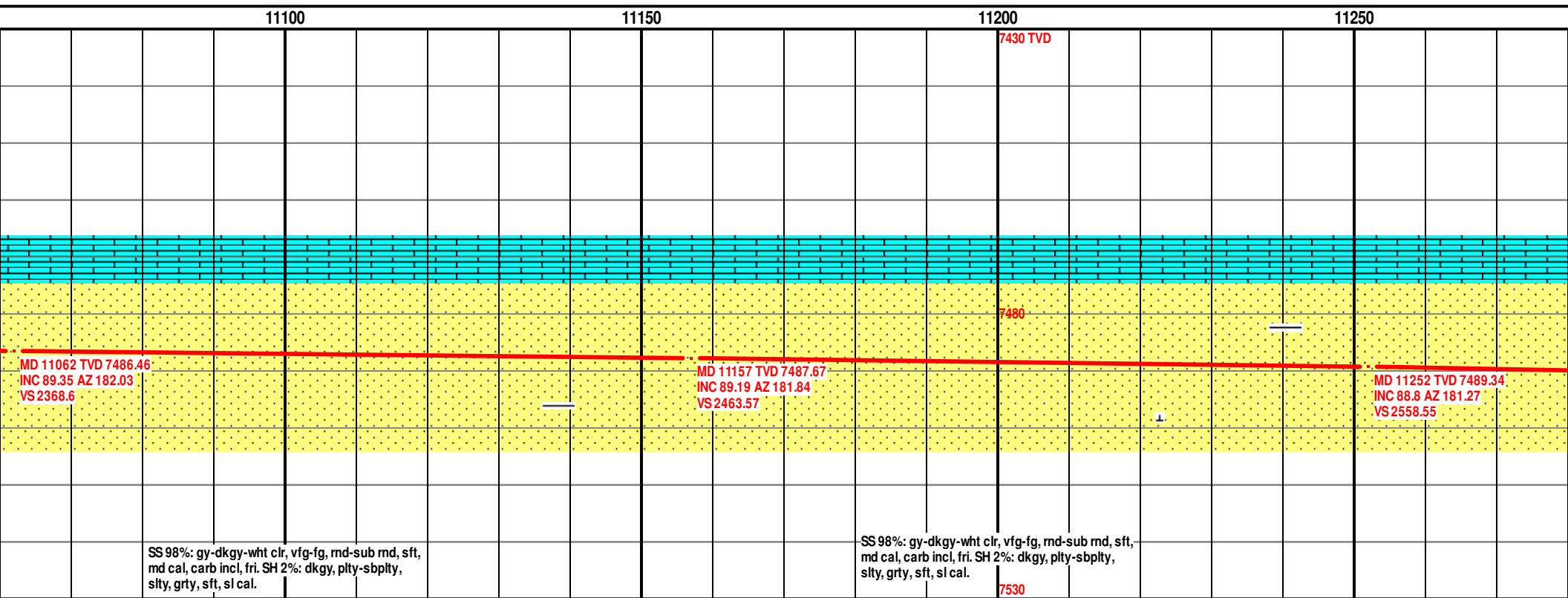
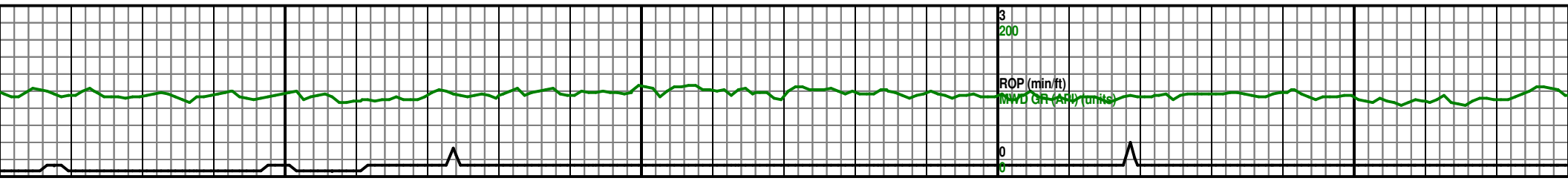


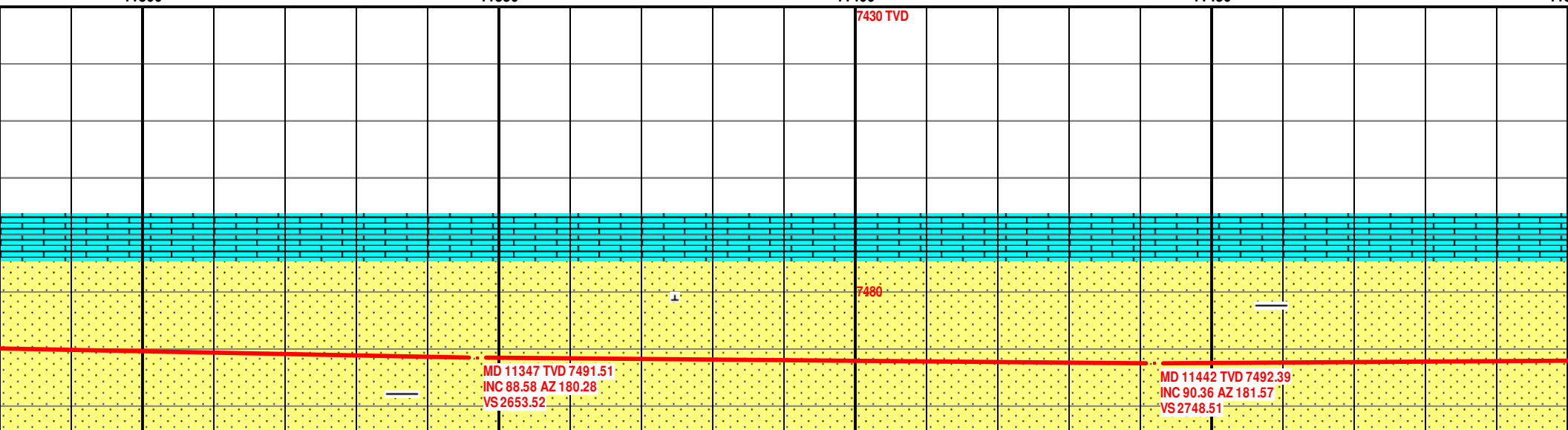
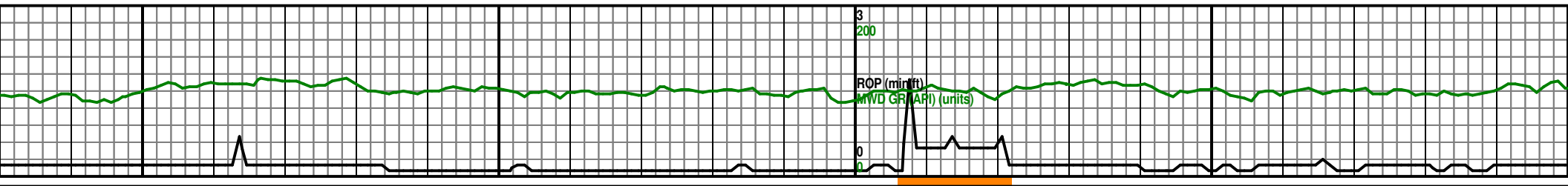
SS 96%: gy-dkgy-wht clr, vfg-fg, rnd-sub rnd, sft, md cal, carb incl, fri. SH 4%: dkgy, plty-sbply, slty, grty, sft, sl cal.

SS 96%: gy-dkgy-wht clr, vfg-fg, rnd-sub rnd, sft, md cal, carb incl, fri. SH 4%: dkgy, plty-sbply, slty, grty, sft, sl cal.









SS 98%: gy-dkgy-wht clr, vfg-fg, rnd-sub rnd, sft, md cal, carb incl, fri. SH 2%: dkgy, pty-sbply, slty, grty, sft, sl cal.

SS 98%: gy-dkgy-wht clr, vfg-fg, rnd-sub rnd, sft, md cal, carb incl, fri. SH 2%: dkgy, pty-sbply, slty, grty, sft, sl cal.

SS 98%: gy-dkgy-wht clr, md cal, carb incl, fri. SH 2%: slty, grty, sft, sl cal.

