



Well Name: RU 314-5
Surface Location: RU 21-8 Pad
North American Datum 1983 , US State Plane 1983 , Colorado Central Zone
Ground Elevation: 7736.00

+N/-S
0.00

+E/-W
0.00

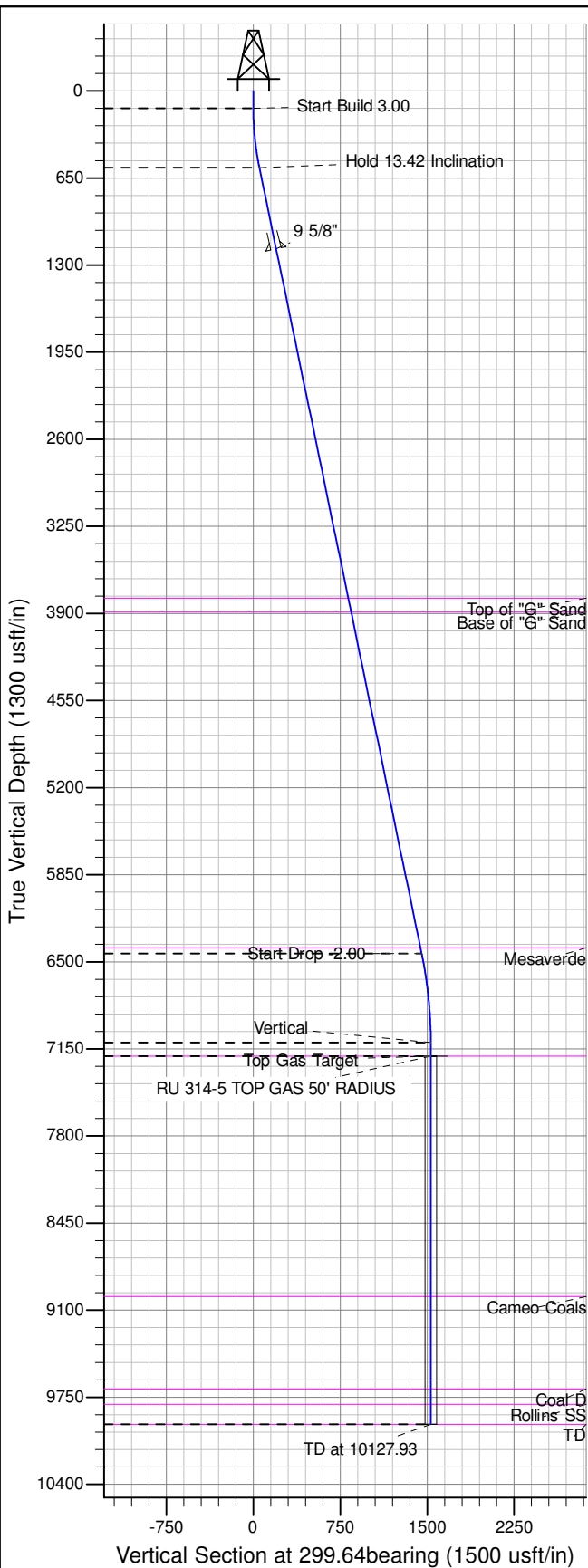
Northing
1602638.91
KELLY BUSHING @ 7762.00usft (Nabors 576 (26' RKB) mab)

Easting
2350456.76

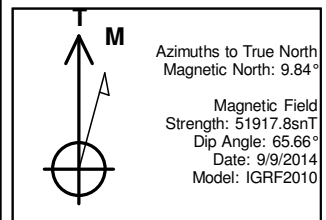
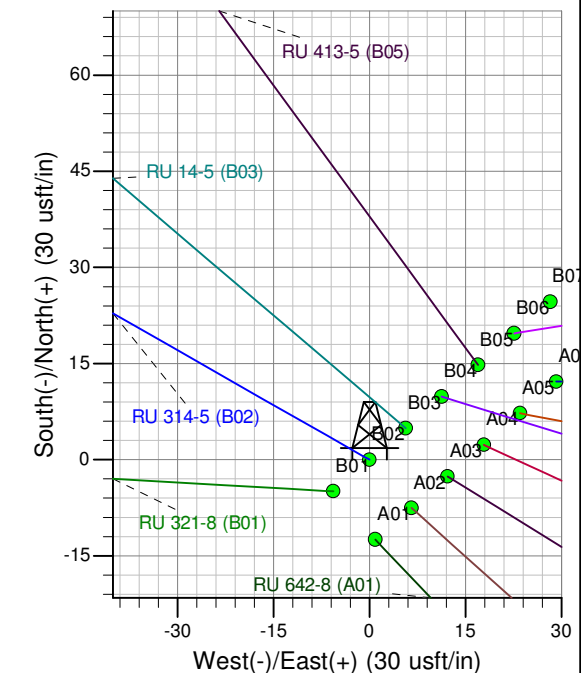
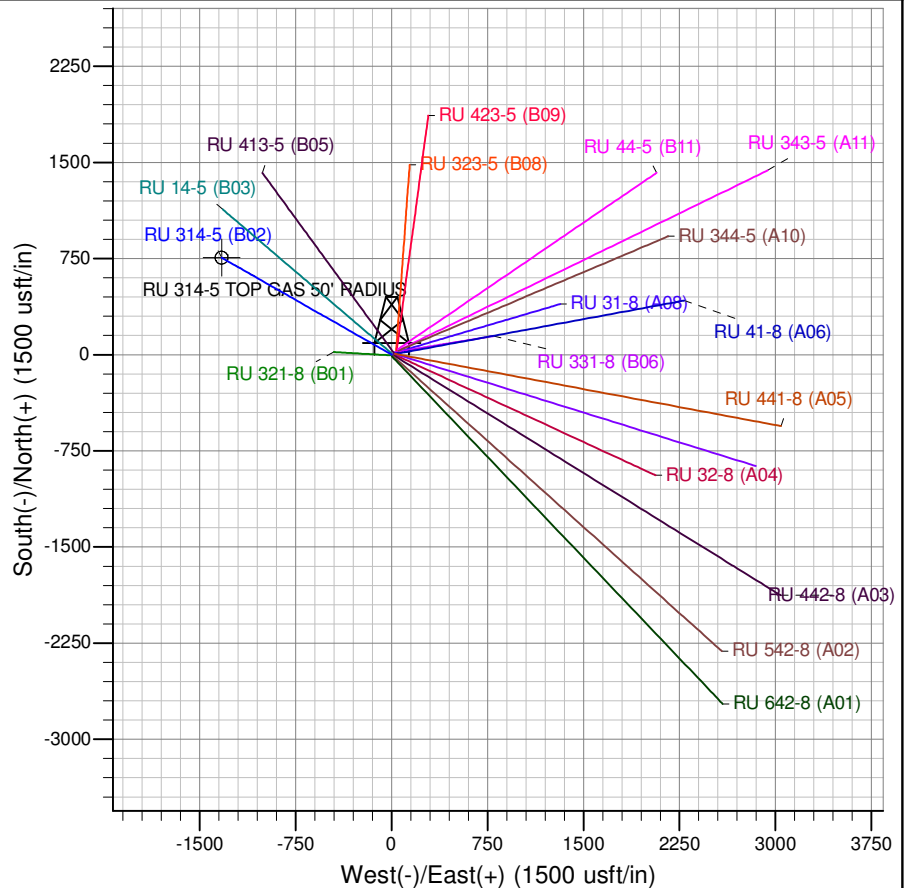
Latitude
39.465432

Longitude
-107.800955

Slot
B02



ANNOTATIONS									
TVD	MD	Inc	Azi	+N/-S	+E/-W	Vsect	Departure	Annotation	
130.00	130.00	0.00	0.00	0.00	0.00	0.00	0.00	Start Build 3.00	
573.38	577.47	13.42	299.64	25.81	-45.35	52.18	52.18	Hold 13.42 Inclination	
6437.92	6606.73	13.42	299.64	718.04	-1261.93	1451.91	1451.91	Start Drop -2.00	
7103.00	7277.93	0.00	0.00	756.75	-1329.96	1530.18	1530.18	Vertical	
7203.00	7377.93	0.00	0.00	756.75	-1329.96	1530.18	1530.18	Top Gas Target	
9953.00	10127.93	0.00	0.00	756.75	-1329.96	1530.18	1530.18	TD at 10127.93	



Project: RU 08-07S-093W
Site: RU 21-8 Pad
Well: RU 314-5
Design #2 14May15 sam