



Lease Review All - Frac Summary

Well Name: RAZOR 33M-2804

API Number 051233925800			WPC ID 1CO0761113			Well Permit Number			Field Name DJ Horizontal Niobrara			County Weld			State CO
Well Configuration Type Lateral/Horizontal					Orig KB Elv (ft) 4,747.50		Ground Elevation (ft) 4,729.00		Casing Flange Elevation (ft)		Tubing Head Elevation (ft)		Total Depth (ft)KB 13,178.0		
Original Spud Date 12/20/2014		Completion Date 3/3/2015		Asset Group Redtail			Responsible Engineer Charles Ohlson			N/S Dist (ft) 565.0		N/S Ref FSL	E/W Dist (ft) 771.0		E/W Ref FWL
Lot	Quarter 1 SW	Quarter 2 SW	Quarter 3	Quarter 4	Section 33	Section Suffix	Section Type	Township 10	Township N/S Dir N	Range 58	Range E/W Dir W	Meridian			

Lateral/Horizontal - Original Hole, 6/17/2015 1:46:33 PM					Wellbore Sections													
MD (ftKB)	D (ft K B)	n (K B)	l (K B)	Vertical schematic (actual)	Logs	Wellbore Name		Start Date	Size (in)	Act Top (ftKB)	Act Btm (ftKB)							
						Original Hole		12/11/2014	24	18.5	108.5							
						Original Hole		12/20/2014	13 1/2	108.5	1,586.0							
						Original Hole		12/22/2014	8 3/4	1,586.0	6,190.0							
						Original Hole		12/25/2014	6	6,190.0	13,178.0							
Conductor Pipe, 108.5ftKB																		
OD (in)						Wt (lb/ft)		Grade		Top (ftKB)		Btm (ftKB)		Len (ft)		Item Des		
16						42.09		J-55		18.5		108.5		90.00		Casing joints		
Surface Csg, 1,567.3ftKB																		
OD (in)						Wt (lb/ft)		Grade		Top (ftKB)		Btm (ftKB)		Len (ft)		Item Des		
9 5/8						36.00		J-55		18.5		18.5		0.00		Landing joint		
9 5/8						36.00		J-55		18.5		23.5		5.00		Pup joint/wellhead		
9 5/8						36.00		J-55		23.5		1,523.7		1,500.20		Casing Joints		
9 5/8						36.00		J-55		1,523.7		1,524.7		1.00		Float Collar		
9 5/8						36.00		J-55		1,524.7		1,565.8		41.10		Casing Joints		
9 5/8						36.00		J-55		1,565.8		1,567.3		1.50		Guide Shoe		
Frac String, 5,065.3ftKB																		
OD (in)						Wt (lb/ft)		Grade		Top (ftKB)		Btm (ftKB)		Len (ft)		Item Des		
7										18.2		20.3		2.01		Casing Hanger		
4 1/2						11.60		P-110		20.3		63.5		43.20		Casing Joints		
4 1/2										63.5		91.0		27.54		Pup Joint 10.24ft 8.05ft 5.05ft 2ft 2.2ft		
4 1/2						11.60		P-110		91.0		5,050.3		4,959.26		Casing Joints		
4 1/2										5,050.3		5,054.4		4.14		Handling Sub		
4 1/2										5,054.4		5,065.3		10.90		Seal Assembly		
Intermediate Csg, 6,170.5ftKB																		
OD (in)						Wt (lb/ft)		Grade		Top (ftKB)		Btm (ftKB)		Len (ft)		Item Des		
7						29.00		P-110		18.5		18.5		0.00		Landing Joint		
7						29.00		P-110		18.5		23.5		5.00		Casing Hanger/ pup		
7						29.00		P-110		23.5		6,124.2		6,100.67		Casing Joints		
7						29.00		P-110		6,124.2		6,125.6		1.40		Float Collar		
7						29.00		P-110		6,125.6		6,168.9		43.33		Casing Joints		
7						29.00		P-110		6,168.9		6,170.5		1.60		Shoe		
Liner, 13,168.0ftKB																		
OD (in)						Wt (lb/ft)		Grade		Top (ftKB)		Btm (ftKB)		Len (ft)		Item Des		
5 1/4						11.60		HCP-110		5,054.4		5,054.4		0.00		Setting tool		
4 1/2						11.60		HCP-110		5,054.4		5,084.1		29.78		HPS liner hanger with x-o & collar & packer		
4 1/2						11.60		HCP-110		5,084.1		13,120.2		8,036.02		Casing Joints		
4 1/2						11.60		HCP-110		13,120.2		13,121.7		1.54		Ball catch landing collar		
4 1/2						11.60		HCP-110		13,121.7		13,123.3		1.63		Float Collar		
4 1/2						11.60		HCP-110		13,123.3		13,166.6		43.22		Casing Joints		
4 1/2						11.60		HCP-110		13,166.6		13,168.0		1.45		Guide shoe (wet)		
Cement Stages																		
Des						Pump Start Date		Drill Out Date		Top (ftKB)		Btm (ftKB)		Top Meas Meth				
Conductor Cement						12/11/2014				18.5		108.5		Returns to Surface				
Surface Casing Cement						12/21/2014				18.5		1,567.3		Returns to Surface				
Intermediate Casing Cement						12/24/2014				18.5		6,170.5		Returns to Surface				
Liner Cement (wet shoe)						12/29/2014				5,054.4		13,168.0		Returns to Surface				
Perforations																		
Type of Hole						Date		Top (ftKB)		Btm (ftKB)		Zone						
Perforated Liner						3/4/2015		6,193.0		6,195.0		Niobrara, Original Hole						
Perforated Liner						3/4/2015		6,259.0		6,261.0		Niobrara, Original Hole						
Perforated Liner						3/4/2015		6,326.0		6,328.0		Niobrara, Original Hole						
Perforated Liner						3/3/2015		6,392.0		6,394.0		Niobrara, Original Hole						
Perforated Liner						3/3/2015		6,452.0		6,454.0		Niobrara, Original Hole						
Perforated Liner						3/3/2015		6,525.0		6,527.0		Niobrara, Original Hole						
Perforated Liner						3/3/2015		6,591.0		6,593.0		Niobrara, Original Hole						
Perforated Liner						3/3/2015		6,657.0		6,659.0		Niobrara, Original Hole						
Perforated Liner						3/3/2015		6,724.0		6,726.0		Niobrara, Original Hole						
Perforated Liner						3/3/2015		6,790.0		6,792.0		Niobrara, Original Hole						
Perforated Liner						3/3/2015		6,856.0		6,858.0		Niobrara, Original Hole						
Perforated Liner						3/3/2015		6,920.0		6,922.0		Niobrara, Original Hole						
Perforated Liner						3/3/2015		6,989.0		6,991.0		Niobrara, Original Hole						
Perforated Liner						3/3/2015		7,050.0		7,052.0		Niobrara, Original Hole						
Perforated Liner						3/3/2015		7,122.0		7,124.0		Niobrara, Original Hole						
Perforated Liner						3/3/2015		7,188.0		7,190.0		Niobrara, Original Hole						
Perforated Liner		3/3/2015		7,255.0		7,257.0		Niobrara, Original Hole										
Perforated Liner		3/3/2015		7,321.0		7,323.0		Niobrara, Original Hole										
Perforated Liner		3/3/2015		7,387.0		7,389.0		Niobrara, Original Hole										
Perforated Liner		3/3/2015		7,454.0		7,456.0		Niobrara, Original Hole										

Lease Review All - Frac Summary

Well Name: RAZOR 33M-2804

API Number 051233925800		WPC ID 1CO0761113		Well Permit Number		Field Name DJ Horizontal Niobrara			County Weld			State CO			
Well Configuration Type Lateral/Horizontal				Orig KB Elv (ft) 4,747.50		Ground Elevation (ft) 4,729.00		Casing Flange Elevation (ft)		Tubing Head Elevation (ft)		Total Depth (ftKB) 13,178.0			
Original Spud Date 12/20/2014		Completion Date 3/3/2015		Asset Group Redtail			Responsible Engineer Charles Ohlson			N/S Dist (ft) 565.0		N/S Ref FSL	E/W Dist (ft) 771.0		E/W Ref FWL
Lot		Quarter 1 SW	Quarter 2 SW	Quarter 3	Quarter 4	Section 33	Section Suffix	Section Type	Township 10	Township N/S Dir N	Range 58	Range E/W Dir W		Meridian	

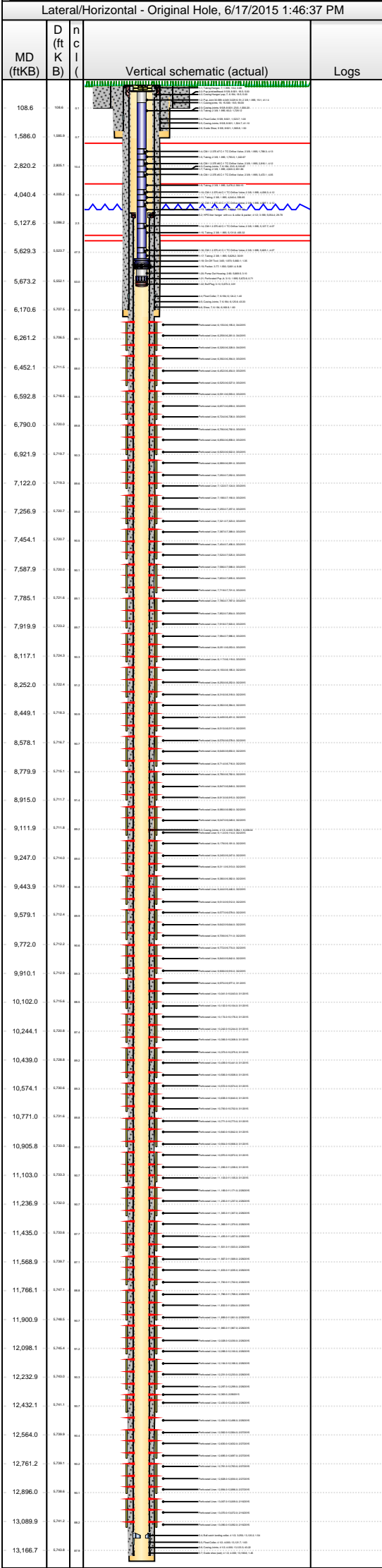
Lateral/Horizontal - Original Hole, 6/17/2015 1:46:35 PM					Perforations				
MD (ftKB)	D (ft K B)	n c l (Vertical schematic (actual)	Logs	Type of Hole	Date	Top (ftKB)	Btm (ftKB)	Zone
					Perforated Liner	3/3/2015	7,520.0	7,525.0	Niobrara, Original Hole
					Perforated Liner	3/3/2015	7,586.0	7,588.0	Niobrara, Original Hole
					Perforated Liner	3/3/2015	7,653.0	7,655.0	Niobrara, Original Hole
108.6	108.6	51			Perforated Liner	3/3/2015	7,719.0	7,721.0	Niobrara, Original Hole
1,586.0	1586.0	57			Perforated Liner	3/3/2015	7,785.0	7,787.0	Niobrara, Original Hole
2,820.2	2820.2	104			Perforated Liner	3/3/2015	7,852.0	7,854.0	Niobrara, Original Hole
4,040.4	4040.2	161			Perforated Liner	3/3/2015	7,918.0	7,920.0	Niobrara, Original Hole
5,127.6	5089.2	214			Perforated Liner	3/3/2015	7,984.0	7,986.0	Niobrara, Original Hole
5,629.3	5629.7	259			Perforated Liner	3/3/2015	8,051.0	8,053.0	Niobrara, Original Hole
5,673.2	5629.1	264			Perforated Liner	3/3/2015	8,117.0	8,119.0	Niobrara, Original Hole
6,170.6	6007.2	304			Perforated Liner	3/2/2015	8,183.0	8,185.0	Niobrara, Original Hole
6,261.2	6007.0	304			Perforated Liner	3/2/2015	8,250.0	8,252.0	Niobrara, Original Hole
6,452.1	6007.0	304			Perforated Liner	3/2/2015	8,316.0	8,318.0	Niobrara, Original Hole
6,592.8	6007.0	304			Perforated Liner	3/2/2015	8,382.0	8,384.0	Niobrara, Original Hole
6,790.0	6007.0	304			Perforated Liner	3/2/2015	8,449.0	8,451.0	Niobrara, Original Hole
6,921.9	6007.0	304			Perforated Liner	3/2/2015	8,515.0	8,517.0	Niobrara, Original Hole
7,122.0	6007.0	304			Perforated Liner	3/2/2015	8,576.0	8,578.0	Niobrara, Original Hole
7,256.9	6007.0	304			Perforated Liner	3/2/2015	8,648.0	8,650.0	Niobrara, Original Hole
7,454.1	6007.0	304			Perforated Liner	3/2/2015	8,714.0	8,716.0	Niobrara, Original Hole
7,587.9	6007.0	304			Perforated Liner	3/2/2015	8,780.0	8,782.0	Niobrara, Original Hole
7,785.1	6007.0	304			Perforated Liner	3/2/2015	8,847.0	8,849.0	Niobrara, Original Hole
7,919.9	6007.0	304			Perforated Liner	3/2/2015	8,913.0	8,915.0	Niobrara, Original Hole
8,117.1	6007.0	304			Perforated Liner	3/2/2015	8,980.0	8,982.0	Niobrara, Original Hole
8,252.0	6007.0	304			Perforated Liner	3/2/2015	9,047.0	9,049.0	Niobrara, Original Hole
8,449.1	6007.0	304			Perforated Liner	3/2/2015	9,112.0	9,114.0	Niobrara, Original Hole
8,578.1	6007.0	304			Perforated Liner	3/2/2015	9,179.0	9,181.0	Niobrara, Original Hole
8,779.9	6007.0	304			Perforated Liner	3/2/2015	9,245.0	9,247.0	Niobrara, Original Hole
8,915.0	6007.0	304			Perforated Liner	3/2/2015	9,311.0	9,313.0	Niobrara, Original Hole
9,111.9	6007.0	304			Perforated Liner	3/2/2015	9,380.0	9,382.0	Niobrara, Original Hole
9,247.0	6007.0	304			Perforated Liner	3/2/2015	9,444.0	9,446.0	Niobrara, Original Hole
9,443.9	6007.0	304			Perforated Liner	3/2/2015	9,510.0	9,512.0	Niobrara, Original Hole
9,579.1	6007.0	304			Perforated Liner	3/2/2015	9,577.0	9,579.0	Niobrara, Original Hole
9,772.0	6007.0	304			Perforated Liner	3/2/2015	9,642.0	9,644.0	Niobrara, Original Hole
9,910.1	6007.0	304			Perforated Liner	3/2/2015	9,709.0	9,711.0	Niobrara, Original Hole
10,102.0	6007.0	304			Perforated Liner	3/2/2015	9,772.0	9,774.0	Niobrara, Original Hole
10,244.1	6007.0	304			Perforated Liner	3/2/2015	9,840.0	9,842.0	Niobrara, Original Hole
10,439.0	6007.0	304			Perforated Liner	3/2/2015	9,908.0	9,910.0	Niobrara, Original Hole
10,574.1	6007.0	304			Perforated Liner	3/1/2015	9,975.0	9,977.0	Niobrara, Original Hole
10,771.0	6007.0	304			Perforated Liner	3/1/2015	10,041.0	10,043.0	Niobrara, Original Hole
10,905.8	6007.0	304			Perforated Liner	3/1/2015	10,102.0	10,104.0	Niobrara, Original Hole
11,103.0	6007.0	304			Perforated Liner	3/1/2015	10,174.0	10,176.0	Niobrara, Original Hole
11,236.9	6007.0	304			Perforated Liner	3/1/2015	10,242.0	10,244.0	Niobrara, Original Hole
11,435.0	6007.0	304			Perforated Liner	3/1/2015	10,306.0	10,308.0	Niobrara, Original Hole
11,568.9	6007.0	304			Perforated Liner	3/1/2015	10,373.0	10,375.0	Niobrara, Original Hole
11,766.1	6007.0	304			Perforated Liner	3/1/2015	10,439.0	10,441.0	Niobrara, Original Hole
11,900.9	6007.0	304			Perforated Liner	3/1/2015	10,506.0	10,508.0	Niobrara, Original Hole
12,098.1	6007.0	304			Perforated Liner	3/1/2015	10,572.0	10,574.0	Niobrara, Original Hole
12,232.9	6007.0	304			Perforated Liner	3/1/2015	10,638.0	10,640.0	Niobrara, Original Hole
12,432.1	6007.0	304			Perforated Liner	3/1/2015	10,700.0	10,702.0	Niobrara, Original Hole
12,564.0	6007.0	304			Perforated Liner	3/1/2015	10,771.0	10,773.0	Niobrara, Original Hole
12,761.2	6007.0	304			Perforated Liner	3/1/2015	10,840.0	10,842.0	Niobrara, Original Hole
12,896.0	6007.0	304			Perforated Liner	3/1/2015	10,840.0	10,842.0	Niobrara, Original Hole
13,089.9	6007.0	304			Perforated Liner	3/1/2015	10,904.0	10,906.0	Niobrara, Original Hole
13,166.7	6007.0	304			Perforated Liner	3/1/2015	10,904.0	10,906.0	Niobrara, Original Hole
					Perforated Liner	3/1/2015	10,970.0	10,972.0	Niobrara, Original Hole
					Perforated Liner	3/1/2015	10,970.0	10,972.0	Niobrara, Original Hole
					Perforated Liner	3/1/2015	11,036.0	11,038.0	Niobrara, Original Hole
					Perforated Liner	3/1/2015	11,036.0	11,038.0	Niobrara, Original Hole
					Perforated Liner	3/1/2015	11,103.0	11,105.0	Niobrara, Original Hole
					Perforated Liner	3/1/2015	11,103.0	11,105.0	Niobrara, Original Hole
					Perforated Liner	2/28/2015	11,169.0	11,171.0	Niobrara, Original Hole
					Perforated Liner	2/28/2015	11,169.0	11,171.0	Niobrara, Original Hole
					Perforated Liner	2/28/2015	11,235.0	11,237.0	Niobrara, Original Hole
					Perforated Liner	2/28/2015	11,235.0	11,237.0	Niobrara, Original Hole
					Perforated Liner	2/28/2015	11,305.0	11,307.0	Niobrara, Original Hole
					Perforated Liner	2/28/2015	11,305.0	11,307.0	Niobrara, Original Hole
					Perforated Liner	2/28/2015	11,368.0	11,370.0	Niobrara, Original Hole
					Perforated Liner	2/28/2015	11,368.0	11,370.0	Niobrara, Original Hole
					Perforated Liner	2/28/2015	11,435.0	11,437.0	Niobrara, Original Hole
					Perforated Liner	2/28/2015	11,435.0	11,437.0	Niobrara, Original Hole
					Perforated Liner	2/28/2015	11,501.0	11,503.0	Niobrara, Original Hole
					Perforated Liner	2/28/2015	11,501.0	11,503.0	Niobrara, Original Hole
					Perforated Liner	2/28/2015	11,567.0	11,569.0	Niobrara, Original Hole
					Perforated Liner	2/28/2015	11,567.0	11,569.0	Niobrara, Original Hole
					Perforated Liner	2/28/2015	11,633.0	11,635.0	Niobrara, Original Hole
					Perforated Liner	2/28/2015	11,633.0	11,635.0	Niobrara, Original Hole
					Perforated Liner	2/28/2015	11,700.0	11,702.0	Niobrara, Original Hole
					Perforated Liner	2/28/2015	11,700.0	11,702.0	Niobrara, Original Hole
					Perforated Liner	2/28/2015	11,766.0	11,768.0	Niobrara, Original Hole
					Perforated Liner	2/28/2015	11,766.0	11,768.0	Niobrara, Original Hole
					Perforated Liner	2/28/2015	11,832.0	11,834.0	Niobrara, Original Hole
					Perforated Liner	2/28/2015	11,832.0	11,834.0	Niobrara, Original Hole
					Perforated Liner	2/28/2015	11,899.0	11,901.0	Niobrara, Original Hole
					Perforated Liner	2/28/2015	11,899.0	11,901.0	Niobrara, Original Hole
					Perforated Liner	2/28/2015	11,965.0	11,967.0	Niobrara, Original Hole
					Perforated Liner	2/28/2015	11,965.0	11,967.0	Niobrara, Original Hole
					Perforated Liner	2/28/2015	12,028.0	12,030.0	Niobrara, Original Hole
					Perforated Liner	2/28/2015	12,028.0	12,030.0	Niobrara, Original Hole
					Perforated Liner	2/28/2015	12,098.0	12,100.0	Niobrara, Original Hole
					Perforated Liner	2/28/2015	12,098.0	12,100.0	Niobrara, Original Hole



Lease Review All - Frac Summary

Well Name: RAZOR 33M-2804

API Number	WPC ID		Well Permit Number		Field Name		County	State	
051233925800	1CO0761113				DJ Horizontal Niobrara		Weld	CO	
Well Configuration Type		Orig KB Elv (ft)		Ground Elevation (ft)		Casing Flange Elevation (ft)		Tubing Head Elevation (ft)	
Lateral/Horizontal		4,747.50		4,729.00				13,178.0	
Original Spud Date		Completion Date		Asset Group		Responsible Engineer		N/S Dist (ft)	N/S Ref
12/20/2014		3/3/2015		Redtail		Charles Ohlson		565.0	FSL
E/W Dist (ft)		E/W Ref							
771.0		FWL							
Lot	Quarter 1	Quarter 2	Quarter 3	Quarter 4	Section	Section Suffix	Section Type	Township	Township N/S Dir
	SW	SW			33			10	N
Range		Range		Range		Range		Range	
58		58		58		58		58	
Meridian		Meridian		Meridian		Meridian		Meridian	
W		W		W		W		W	



Perforations								
Type of Hole		Date	Top (ftKB)	Btm (ftKB)	Zone			
Perforated Liner		2/28/2015	12,164.0	12,166.0	Niobrara, Original Hole			
Perforated Liner		2/28/2015	12,231.0	12,233.0	Niobrara, Original Hole			
Perforated Liner		2/28/2015	12,297.0	12,299.0	Niobrara, Original Hole			
Perforated Liner		2/28/2015	12,363.0	12,363.0	Niobrara, Original Hole			
Perforated Liner		2/28/2015	12,430.0	12,432.0	Niobrara, Original Hole			
Perforated Liner		2/28/2015	12,494.0	12,496.0	Niobrara, Original Hole			
Perforated Liner		2/27/2015	12,562.0	12,564.0	Niobrara, Original Hole			
Perforated Liner		2/27/2015	12,630.0	12,632.0	Niobrara, Original Hole			
Perforated Liner		2/27/2015	12,695.0	12,697.0	Niobrara, Original Hole			
Perforated Liner		2/27/2015	12,761.0	12,763.0	Niobrara, Original Hole			
Perforated Liner		2/27/2015	12,828.0	12,830.0	Niobrara, Original Hole			
Perforated Liner		2/27/2015	12,894.0	12,896.0	Niobrara, Original Hole			
Perforated Liner		2/16/2015	13,007.0	13,009.0	Niobrara, Original Hole			
Perforated Liner		2/16/2015	13,070.0	13,072.0	Niobrara, Original Hole			
Perforated Liner		2/16/2015	13,090.0	13,092.0	Niobrara, Original Hole			
Stimulations & Treatments								
Sand Frac on 2/16/2015 06:00								
Comment								
Treatment End Date: 3/3/2015; Number of staged intervals: 35; Min frac gradient: 0.768 psi/ft; Number of perfs: 1260; Total XL Gel: 63108 bbl; Linear Gel: 15466 bbl; 15% HCL: 821 bbl; Slickwater: 31897 bbl; Freshwater: 1254 bbl								
Total Clean Volu...	Vol Slurry Tot (bbl)	Proppant Desig...	Proppant Frm (lb)	P Max (psi)	Avg Treat...	Avg Treat...	Max Tre...	Frac Gr...
112546.00	118271.90	5,036,500.0	4,792,740.0	8,554.0	4,479.0	54.50	57.10	0.87
Total Add Amount								
Proppant Ottawa 20/40 4678191 lb; Proppant Ottawa 40/70 114549 lb								
Stim/Treat Fluids								
Fluid Name								
Trident XL Gel; CMHPG Linear Gel; 15% HCL								
Stim/Treat Stages								
Interval 1								
Stg #	Start Date	Top (ftKB)	Btm (ftKB)	Vol Clean...	Vol Slurry...	Comment		
1	2/16/2015	13,007.0	13,092.0	4398.60	4543.10	XL Gel:1481 bbl; Linear Gel:303 bbl; 15% HCL:12 bbl; Slickwater:2574bbl; Freshwater:29 bbl		
Stim/Treat Additives								
Stg #	Add		Type		Amount	Units	Sand Size	
1	Proppant		Ottawa 20/40		58,760.0	lb	20/40	
1	Proppant		Ottawa 40/70		3,206.0	lb	40/70	
Interval 2								
Stg #	Start Date	Top (ftKB)	Btm (ftKB)	Vol Clean...	Vol Slurry...	Comment		
2	2/27/2015	12,761.0	12,896.0	4829.10	4881.00	XL Gel:2617 bbl; Linear Gel:1007 bbl; 15% HCL:24 bbl; Slickwater:1075bbl; Freshwater:106 bbl		
Stim/Treat Additives								
Stg #	Add		Type		Amount	Units	Sand Size	
2	Proppant		Ottawa 20/40		67,967.0	lb	20/40	
2	Proppant		Ottawa 40/70		3,800.0	lb	40/70	
Interval 3								
Stg #	Start Date	Top (ftKB)	Btm (ftKB)	Vol Clean...	Vol Slurry...	Comment		
3	2/27/2015	12,562.0	12,697.0	3081.90	3164.10	XL Gel:1500 bbl; Linear Gel:412 bbl; 15% HCL:24 bbl; Slickwater:1065bbl; Freshwater:81 bbl		
Stim/Treat Additives								
Stg #	Add		Type		Amount	Units	Sand Size	
3	Proppant		Ottawa 20/40		90,026.0	lb	20/40	
3	Proppant		Ottawa 40/70		3,171.0	lb	40/70	
Interval 4								
Stg #	Start Date	Top (ftKB)	Btm (ftKB)	Vol Clean...	Vol Slurry...	Comment		
4	2/27/2015	12,363.0	12,469.0	3403.50	3527.50	XL Gel:1820 bbl; Linear Gel:413 bbl; 15% HCL:24 bbl; Slickwater:1061bbl; Freshwater:86 bbl		
Stim/Treat Additives								
Stg #	Add		Type		Amount	Units	Sand Size	
4	Proppant		Ottawa 20/40		141,275.0	lb	20/40	
4	Proppant		Ottawa 40/70		3,072.0	lb	40/70	
Interval 5								
Stg #	Start Date	Top (ftKB)	Btm (ftKB)	Vol Clean...	Vol Slurry...	Comment		
5	2/28/2015	12,164.0	12,299.0	3269.70	3393.60	XL Gel:1782 bbl; Linear Gel:412 bbl; 15% HCL:24 bbl; Slickwater:1011bbl; Freshwater:41 bbl		
Stim/Treat Additives								
Stg #	Add		Type		Amount	Units	Sand Size	
5	Proppant		Ottawa 20/40		141,257.0	lb	20/40	
5	Proppant		Ottawa 40/70		3,521.0	lb	40/70	
Interval 6								
Stg #	Start Date	Top (ftKB)	Btm (ftKB)	Vol Clean...	Vol Slurry...	Comment		
6	2/28/2015	11,965.0	12,100.0	3189.60	3333.00	XL Gel:1780 bbl; Linear Gel:413 bbl; 15% HCL:24 bbl; Slickwater:942bbl; Freshwater:32 bbl		



Lease Review All - Frac Summary

Well Name: RAZOR 33M-2804

API Number 051233925800		WPC ID 1CO0761113		Well Permit Number		Field Name DJ Horizontal Niobrara			County Weld			State CO			
Well Configuration Type Lateral/Horizontal				Orig KB Elv (ft) 4,747.50		Ground Elevation (ft) 4,729.00		Casing Flange Elevation (ft)		Tubing Head Elevation (ft)		Total Depth (ftKB) 13,178.0			
Original Spud Date 12/20/2014		Completion Date 3/3/2015		Asset Group Redtail			Responsible Engineer Charles Ohlson			N/S Dist (ft) 565.0		N/S Ref FSL	E/W Dist (ft) 771.0		E/W Ref FWL
Lot		Quarter 1 SW	Quarter 2 SW	Quarter 3	Quarter 4	Section 33	Section Suffix	Section Type	Township 10	Township N/S Dir N	Range 58	Range E/W Dir W		Meridian	

Lateral/Horizontal - Original Hole, 6/17/2015 1:46:39 PM						Stim/Treat Additives							
MD (ftKB)	D (ft K B)	n (K B)	c (K B)	l (K B)	Vertical schematic (actual)	Logs	Stg #	Add	Type	Amount	Units	Sand Size	
							6	Proppant	Ottawa 20/40	141,383.0	lb	20/40	
							6	Proppant	Ottawa 40/70	3,251.0	lb	40/70	
Interval 7													
108.6	1084	41					Stg #	Start Date	Top (ftKB)	Btm (ftKB)	Vol Clean...	Vol Slurry...	Comment
							7	2/28/2015	11,766.0	11,901.0	3247.40	3384.70	XL Gel:1813 bbl; Linear Gel:412 bbl; 15% HCL:24 bbl; Slickwater:975bbl; Freshwater:24 bbl
1,586.0	15864	42					Stim/Treat Additives						
							Stg #	Add	Type	Amount	Units	Sand Size	
2,820.2	28204	43					7	Proppant	Ottawa 20/40	140,931.0	lb	20/40	
4,040.4	4082	44					7	Proppant	Ottawa 40/70	3,267.0	lb	40/70	
5,127.6	5282	45					Interval 8						
5,629.3	5227	46					Stg #	Start Date	Top (ftKB)	Btm (ftKB)	Vol Clean...	Vol Slurry...	Comment
5,673.2	5221	46					8	2/28/2015	11,567.0	11,702.0	3564.60	3700.30	XL Gel:1806 bbl; Linear Gel:413 bbl; 15% HCL:24 bbl; Slickwater:1299bbl; Freshwater:24 bbl
6,170.6	5205	46					Stim/Treat Additives						
6,261.2	5263	46					Stg #	Add	Type	Amount	Units	Sand Size	
6,452.1	5215	46					8	Proppant	Ottawa 20/40	141,065.0	lb	20/40	
6,592.8	5263	46					8	Proppant	Ottawa 40/70	3,272.0	lb	40/70	
6,790.0	5239	46					Interval 9						
6,921.9	5267	46					Stg #	Start Date	Top (ftKB)	Btm (ftKB)	Vol Clean...	Vol Slurry...	Comment
7,122.0	5269	46					9	2/28/2015	11,368.0	11,503.0	3231.20	3363.10	XL Gel:1806 bbl; Linear Gel:342 bbl; 15% HCL:24 bbl; Slickwater:991bbl; Freshwater:68 bbl
7,256.9	5227	46					Stim/Treat Additives						
7,454.1	5227	46					Stg #	Add	Type	Amount	Units	Sand Size	
7,587.9	5233	46					9	Proppant	Ottawa 20/40	140,383.0	lb	20/40	
							9	Proppant	Ottawa 40/70	3,265.0	lb	40/70	
7,785.1	5214	46					Interval 10						
7,919.9	5232	46					Stg #	Start Date	Top (ftKB)	Btm (ftKB)	Vol Clean...	Vol Slurry...	Comment
8,117.1	5263	46					10	2/28/2015	11,169.0	11,307.0	3218.80	3368.60	XL Gel:1798 bbl; Linear Gel:412 bbl; 15% HCL:24 bbl; Slickwater:943bbl; Freshwater:42 bbl
8,252.0	5224	46					Stim/Treat Additives						
8,449.1	5263	46					Stg #	Add	Type	Amount	Units	Sand Size	
8,578.1	5267	46					10	Proppant	Ottawa 20/40	139,298.0	lb	20/40	
							10	Proppant	Ottawa 40/70	3,350.0	lb	40/70	
8,779.9	5251	46					Interval 11						
8,915.0	5217	46					Stg #	Start Date	Top (ftKB)	Btm (ftKB)	Vol Clean...	Vol Slurry...	Comment
9,111.9	5218	46					11	3/1/2015	10,970.0	11,105.0	3284.00	3450.40	XL Gel:1772 bbl; Linear Gel:428 bbl; 15% HCL:24 bbl; Slickwater:1048bbl; Freshwater:13 bbl
9,247.0	5263	46					Stim/Treat Additives						
9,443.9	5232	46					Stg #	Add	Type	Amount	Units	Sand Size	
9,579.1	5214	46					11	Proppant	Ottawa 20/40	141,480.0	lb	20/40	
							11	Proppant	Ottawa 40/70	3,198.0	lb	40/70	
9,772.0	5232	46					Interval 12						
9,910.1	5239	46					Stg #	Start Date	Top (ftKB)	Btm (ftKB)	Vol Clean...	Vol Slurry...	Comment
10,102.0	5214	46					12	3/1/2015	10,771.0	10,906.0	3510.60	3686.30	XL Gel:1766 bbl; Linear Gel:463 bbl; 15% HCL:24 bbl; Slickwater:1227bbl; Freshwater:31 bbl
10,244.1	5239	46					Stim/Treat Additives						
10,439.0	5234	46					Stg #	Add	Type	Amount	Units	Sand Size	
10,574.1	5234	46					12	Proppant	Ottawa 20/40	140,688.0	lb	20/40	
							12	Proppant	Ottawa 40/70	3,361.0	lb	40/70	
10,771.0	5214	46					Interval 13						
10,905.8	5233	46					Stg #	Start Date	Top (ftKB)	Btm (ftKB)	Vol Clean...	Vol Slurry...	Comment
11,103.0	5233	46					13	3/1/2015	10,572.0	10,702.0	3111.30	3252.20	XL Gel:1634 bbl; Linear Gel:617 bbl; 15% HCL:24 bbl; Slickwater:818bbl; Freshwater:19 bbl
11,236.9	5233	46					Stim/Treat Additives						
11,435.0	5233	46					Stg #	Add	Type	Amount	Units	Sand Size	
11,568.9	5267	46					13	Proppant	Ottawa 20/40	118,901.0	lb	20/40	
11,766.1	5231	46					13	Proppant	Ottawa 40/70	3,533.0	lb	40/70	
11,900.9	5263	46					Interval 14						
12,098.1	5214	46					Stg #	Start Date	Top (ftKB)	Btm (ftKB)	Vol Clean...	Vol Slurry...	Comment
12,232.9	5233	46					14	3/1/2015	10,373.0	10,508.0	3179.40	3358.70	XL Gel:1814 bbl; Linear Gel:398 bbl; 15% HCL:24 bbl; Slickwater:929bbl; Freshwater:14 bbl
12,432.1	5231	46					Stim/Treat Additives						
12,564.0	5239	46					Stg #	Add	Type	Amount	Units	Sand Size	
12,761.2	5231	46				14	Proppant	Ottawa 20/40	141,051.0	lb	20/40		
						14	Proppant	Ottawa 40/70	3,290.0	lb	40/70		
12,896.0	5234	46				Interval 15							
13,089.9	5242	46				Stg #	Start Date	Top (ftKB)	Btm (ftKB)	Vol Clean...	Vol Slurry...	Comment	
13,166.7	5238	46				15	3/1/2015	10,174.0	10,308.0	3150.20	3318.30	XL Gel:1791 bbl; Linear Gel:421 bbl; 15% HCL:24 bbl; Slickwater:906bbl; Freshwater:8 bbl	
Stim/Treat Additives													
						Stg #	Add	Type	Amount	Units	Sand Size		
						15	Proppant	Ottawa 20/40	140,829.0	lb	20/40		



Lease Review All - Frac Summary

Well Name: RAZOR 33M-2804

API Number 051233925800				WPC ID 1CO0761113				Well Permit Number				Field Name DJ Horizontal Niobrara				County Weld		State CO									
Well Configuration Type Lateral/Horizontal						Orig KB Elv (ft) 4,747.50				Ground Elevation (ft) 4,729.00				Casing Flange Elevation (ft)				Tubing Head Elevation (ft)				Total Depth (ftKB) 13,178.0					
Original Spud Date 12/20/2014				Completion Date 3/3/2015				Asset Group Redtail				Responsible Engineer Charles Ohlson				N/S Dist (ft) 565.0				N/S Ref FSL		E/W Dist (ft) 771.0				E/W Ref FWL	
Lot			Quarter 1 SW		Quarter 2 SW		Quarter 3		Quarter 4		Section 33		Section Suffix		Section Type		Township 10 N		Township N/S Dir		Range 58 W		Range E/W Dir		Meridian		
Lateral/Horizontal - Original Hole, 6/17/2015 1:46:42 PM												Stim/Treat Additives															
MD (ftKB)	D (ft K B)	n (K B)	c (K B)	l (K B)	Vertical schematic (actual)	Logs	Stim/Treat Additives																				
							Stg #	Add				Type				Amount				Units		Sand Size					
							15	Proppant				Ottawa 40/70				3,600.0				lb		40/70					
Interval 16																											
							Stg #	Start Date		Top (ftKB)		Btm (ftKB)		Vol Clean...		Vol Slurry...		Comment									
108.6	108.6	31					16	3/1/2015		9,975.0		10,104.0		3120.80		3285.00		XL Gel:1804 bbl; Linear Gel:412 bbl; 15% HCL:24 bbl; Slickwater:874bbl; Freshwater:8 bbl									
Stim/Treat Additives																											
							Stg #	Add				Type				Amount				Units		Sand Size					
2,820.2	2,803.7	34.4					16	Proppant				Ottawa 20/40				141,168.0				lb		20/40					
4,040.4	4,003.2	34.6					16	Proppant				Ottawa 40/70				3,195.0				lb		40/70					
Interval 17																											
							Stg #	Start Date		Top (ftKB)		Btm (ftKB)		Vol Clean...		Vol Slurry...		Comment									
5,629.3	5,603.7	34.3					17	3/1/2015		9,772.0		9,910.0		2982.80		3112.50		XL Gel:1632 bbl; Linear Gel:413 bbl; 15% HCL:24 bbl; Slickwater:856bbl; Freshwater:58 bbl									
5,673.2	5,602.1	34.4																									
Stim/Treat Additives																											
							Stg #	Add				Type				Amount				Units		Sand Size					
6,170.6	6,202.9	34.4					17	Proppant				Ottawa 20/40				111,929.0				lb		20/40					
6,261.2	5,706.4	34.1					17	Proppant				Ottawa 40/70				3,147.0				lb		40/70					
Interval 18																											
							Stg #	Start Date		Top (ftKB)		Btm (ftKB)		Vol Clean...		Vol Slurry...		Comment									
6,452.1	6,711.6	34.4					18	3/2/2015		9,577.0		9,711.0		3126.00		3278.00		XL Gel:1808 bbl; Linear Gel:408 bbl; 15% HCL:24 bbl; Slickwater:814bbl; Freshwater:72 bbl									
6,592.8	6,744.4	34.4																									
Stim/Treat Additives																											
							Stg #	Add				Type				Amount				Units		Sand Size					
6,790.0	6,720.0	34.4					18	Proppant				Ottawa 20/40				141,733.0				lb		20/40					
6,921.9	6,716.7	34.3					18	Proppant				Ottawa 40/70				3,209.0				lb		40/70					
Interval 19																											
							Stg #	Start Date		Top (ftKB)		Btm (ftKB)		Vol Clean...		Vol Slurry...		Comment									
7,122.0	6,719.3	34.4					19	3/2/2015		9,380.0		9,512.0		3099.10		3272.50		XL Gel:1768 bbl; Linear Gel:479 bbl; 15% HCL:24 bbl; Slickwater:812bbl; Freshwater:16 bbl									
7,256.9	6,700.7	34.4																									
Stim/Treat Additives																											
							Stg #	Add				Type				Amount				Units		Sand Size					
7,454.1	6,700.7	34.4					19	Proppant				Ottawa 20/40				141,529.0				lb		20/40					
7,587.9	6,700.0	34.3					19	Proppant				Ottawa 40/70				3,217.0				lb		40/70					
Interval 20																											
							Stg #	Start Date		Top (ftKB)		Btm (ftKB)		Vol Clean...		Vol Slurry...		Comment									
8,252.0	6,702.4	34.2					20	3/2/2015		9,179.0		9,313.0		3066.70		3247.50		XL Gel:1762 bbl; Linear Gel:458 bbl; 15% HCL:24 bbl; Slickwater:805bbl; Freshwater:18 bbl									
8,449.1	6,704.3	34.4																									
Stim/Treat Additives																											
							Stg #	Add				Type				Amount				Units		Sand Size					
8,578.1	6,704.7	34.7					20	Proppant				Ottawa 20/40				140,709.0				lb		20/40					
8,779.9	6,716.1	34.4					20	Proppant				Ottawa 40/70				3,266.0				lb		40/70					
Interval 21																											
							Stg #	Start Date		Top (ftKB)		Btm (ftKB)		Vol Clean...		Vol Slurry...		Comment									
8,915.0	6,711.7	34.4					21	3/2/2015		8,980.0		9,114.0		3048.30		3234.10		XL Gel:1760 bbl; Linear Gel:453 bbl; 15% HCL:24 bbl; Slickwater:793bbl; Freshwater:18 bbl									
9,111.9	6,711.8	34.3																									
Stim/Treat Additives																											
							Stg #	Add				Type				Amount				Units		Sand Size					
9,247.0	6,714.0	34.2					21	Proppant				Ottawa 20/40				140,483.0				lb		20/40					
9,443.9	6,712.2	34.4					21	Proppant				Ottawa 40/70				3,289.0				lb		40/70					
Interval 22																											
							Stg #	Start Date		Top (ftKB)		Btm (ftKB)		Vol Clean...		Vol Slurry...		Comment									
9,579.1	6,712.4	34.4					22	3/2/2015		8,780.0		8,915.0		3061.10		3242.30		XL Gel:1764 bbl; Linear Gel:453 bbl; 15% HCL:24 bbl; Slickwater:811bbl; Freshwater:9 bbl									
9,772.0	6,712.2	34.4																									
Stim/Treat Additives																											
							Stg #	Add				Type				Amount				Units		Sand Size					
9,910.1	6,712.8	34.2					22	Proppant				Ottawa 20/40				140,995.0				lb		20/40					
10,102.0	6,716.4	34.4					22	Proppant				Ottawa 40/70				3,212.0				lb		40/70					
Interval 23																											
							Stg #	Start Date		Top (ftKB)		Btm (ftKB)		Vol Clean...		Vol Slurry...		Comment									
10,244.1	6,706.4	34.1					23	3/2/2015		8,576.0		8,716.0		3028.60		3214.30		XL Gel:1817 bbl; Linear Gel:393 bbl; 15% HCL:24 bbl; Slickwater:780bbl; Freshwater:14 bbl									
10,439.0	6,708.0	34.2																									
Stim/Treat Additives																											
							Stg #	Add				Type				Amount				Units		Sand Size					
10,574.1	6,706.4	34.3					23	Proppant				Ottawa 20/40				140,489.0				lb		20/40					
10,771.0	6,704.4	34.4					23	Proppant				Ottawa 40/70				3,231.0				lb		40/70					
Interval 24																											
							Stg #	Start Date		Top (ftKB)		Btm (ftKB)		Vol Clean...		Vol Slurry...		Comment									
10,905.8	6,703.0	34.4					24	3/2/2015		8,382.0		8,517.0		3013.20		3247.60		XL Gel:1802 bbl; Linear Gel:412 bbl; 15% HCL:24 bbl; Slickwater:734bbl; Freshwater:41 bbl									
11,103.0	6,703.0	34.7																									
Stim/Treat Additives																											
							Stg #	Add				Type				Amount				Units		Sand Size					
11,236.9	6,703.0	34.3					24	Proppant				Ottawa 20/40				141,766.0				lb		20/40					
11,435.0	6,704.4	34.7					24	Proppant				Ottawa 40/70				3,072.0				lb		40/70					
Interval 25																											
							Stg #	Start Date		Top (ftKB)		Btm (ftKB)		Vol Clean...		Vol Slurry...		Comment									
11,568.9	6,706.7	34.1					25	3/2/2015		8,178.0		8,313.0		2982.80		3112.50		XL Gel:1632 bbl; Linear Gel:413 bbl; 15% HCL:24 bbl; Slickwater:856bbl; Freshwater:58 bbl									
11,766.1	6,707.1	34.4																									
Stim/Treat Additives																											
							Stg #	Add				Type				Amount				Units		Sand Size					
11,900.9	6,704.0	34.2					25	Proppant				Ottawa 20/40				111,929.0				lb		20/40					
12,098.1	6,704.4	34.2					25	Proppant				Ottawa 40/70				3,147.0				lb		40/70					
Interval 26																											
							Stg #	Start Date		Top (ftKB)		Btm (ftKB)		Vol Clean...		Vol Slurry...		Comment									
12,232.9	6,703.0	34.2					26	3/2/2015		8,178.0		8,313.0		2982.80		3112.50		XL Gel:1632 bbl; Linear Gel:413 bbl; 15% HCL:24 bbl; Slickwater:856bbl; Freshwater:58 bbl									
12,432.1	6,706.1	34.7																									
Stim/Treat Additives																											
							Stg #	Add				Type				Amount				Units		Sand Size					
12,564.0	6,706.0	34.4					26	Proppant				Ottawa 20/40				111,929.0				lb		20/40					
12,761.2	6,706.1	34.3					26	Proppant				Ottawa 40/70				3,147.0				lb		40/70					
Interval 27																											
							Stg #	Start Date		Top (ftKB)		Btm (ftKB)		Vol Clean...		Vol Slurry...		Comment									
12,896.0	6,704.0	34.1					27	3/2/2015		8,178.0		8,313.0		2982.80		3112.50		XL Gel:1632 bbl; Linear Gel:413 bbl; 15% HCL:24 bbl; Slickwater:856bbl; Freshwater:58 bbl									
13,089.9	6,704.2	34.3																									
13,166.7	6,703.8	34.3																									



Lease Review All - Frac Summary

Well Name: RAZOR 33M-2804

API Number 051233925800		WPC ID 1CO0761113		Well Permit Number		Field Name DJ Horizontal Niobrara		County Weld		State CO	
Well Configuration Type Lateral/Horizontal		Orig KB Elv (ft) 4,747.50		Ground Elevation (ft) 4,729.00		Casing Flange Elevation (ft)		Tubing Head Elevation (ft)		Total Depth (ftKB) 13,178.0	
Original Spud Date 12/20/2014		Completion Date 3/3/2015		Asset Group Redtail		Responsible Engineer Charles Ohlson		N/S Dist (ft) 565.0		N/S Ref FSL	
E/W Dist (ft) 771.0		E/W Ref FWL		Lot		Quarter 1 SW		Quarter 2 SW		Quarter 3	
Quarter 4		Section 33		Section Suffix		Section Type		Township 10 N		Township N/S Dir	
Range 58		Range E/W Dir W		Meridian							
Lateral/Horizontal - Original Hole, 6/17/2015 1:46:44 PM											
Stim/Treat Stages											
Interval 25											
Stg #	Start Date	Top (ftKB)	Btm (ftKB)	Vol Clean...	Vol Slurry...	Comment					
25	3/2/2015	8,183.0	8,318.0	3019.30	3217.70	XL Gel:1811 bbl; Linear Gel:413 bbl; 15% HCL:24 bbl; Slickwater:734bbl; Freshwater:38 bbl					
Stim/Treat Additives											
Stg #	Add			Type		Amount		Units		Sand Size	
25	Proppant			Ottawa 20/40		141,922.0		lb		20/40	
25	Proppant			Ottawa 40/70		3,133.0		lb		40/70	
Interval 26											
Stg #	Start Date	Top (ftKB)	Btm (ftKB)	Vol Clean...	Vol Slurry...	Comment					
26	3/2/2015	7,984.0	8,119.0	3017.40	3214.10	XL Gel:1801 bbl; Linear Gel:412 bbl; 15% HCL:24 bbl; Slickwater:733bbl; Freshwater:48 bbl					
Stim/Treat Additives											
Stg #	Add			Type		Amount		Units		Sand Size	
26	Proppant			Ottawa 20/40		140,972.0		lb		20/40	
26	Proppant			Ottawa 40/70		3,153.0		lb		40/70	
Interval 27											
Stg #	Start Date	Top (ftKB)	Btm (ftKB)	Vol Clean...	Vol Slurry...	Comment					
27	3/2/2015	7,785.0	7,920.0	3013.60	3212.30	XL Gel:1798 bbl; Linear Gel:413 bbl; 15% HCL:24 bbl; Slickwater:737bbl; Freshwater:42 bbl					
Stim/Treat Additives											
Stg #	Add			Type		Amount		Units		Sand Size	
27	Proppant			Ottawa 20/40		141,275.0		lb		20/40	
27	Proppant			Ottawa 40/70		3,237.0		lb		40/70	
Interval 28											
Stg #	Start Date	Top (ftKB)	Btm (ftKB)	Vol Clean...	Vol Slurry...	Comment					
28	3/3/2015	7,586.0	7,721.0	3007.80	3211.60	XL Gel:1763 bbl; Linear Gel:468 bbl; 15% HCL:24 bbl; Slickwater:731bbl; Freshwater:22 bbl					
Stim/Treat Additives											
Stg #	Add			Type		Amount		Units		Sand Size	
28	Proppant			Ottawa 20/40		140,658.0		lb		20/40	
28	Proppant			Ottawa 40/70		3,216.0		lb		40/70	
Interval 29											
Stg #	Start Date	Top (ftKB)	Btm (ftKB)	Vol Clean...	Vol Slurry...	Comment					
29	3/3/2015	7,387.0	7,525.0	2983.10	3182.90	XL Gel:1765 bbl; Linear Gel:450 bbl; 15% HCL:24 bbl; Slickwater:710bbl; Freshwater:35 bbl					
Stim/Treat Additives											
Stg #	Add			Type		Amount		Units		Sand Size	
29	Proppant			Ottawa 20/40		140,834.0		lb		20/40	
29	Proppant			Ottawa 40/70		3,316.0		lb		40/70	
Interval 30											
Stg #	Start Date	Top (ftKB)	Btm (ftKB)	Vol Clean...	Vol Slurry...	Comment					
30	3/3/2015	7,188.0	7,323.0	2958.60	3161.10	XL Gel:1763 bbl; Linear Gel:458 bbl; 15% HCL:24 bbl; Slickwater:699bbl; Freshwater:15 bbl					
Stim/Treat Additives											
Stg #	Add			Type		Amount		Units		Sand Size	
30	Proppant			Ottawa 20/40		140,712.0		lb		20/40	
30	Proppant			Ottawa 40/70		3,430.0		lb		40/70	
Interval 31											
Stg #	Start Date	Top (ftKB)	Btm (ftKB)	Vol Clean...	Vol Slurry...	Comment					
31	3/3/2015	6,989.0	7,124.0	3022.60	3217.20	XL Gel:1768 bbl; Linear Gel:457 bbl; 15% HCL:24 bbl; Slickwater:762bbl; Freshwater:11 bbl					
Stim/Treat Additives											
Stg #	Add			Type		Amount		Units		Sand Size	
31	Proppant			Ottawa 20/40		140,833.0		lb		20/40	
31	Proppant			Ottawa 40/70		3,265.0		lb		40/70	
Interval 32											
Stg #	Start Date	Top (ftKB)	Btm (ftKB)	Vol Clean...	Vol Slurry...	Comment					
32	3/3/2015	6,790.0	6,922.0	2983.00	3148.00	XL Gel:1800 bbl; Linear Gel:412 bbl; 15% HCL:24 bbl; Slickwater:697bbl; Freshwater:50 bbl					
Stim/Treat Additives											
Stg #	Add			Type		Amount		Units		Sand Size	
32	Proppant			Ottawa 20/40		141,455.0		lb		20/40	
32	Proppant			Ottawa 40/70		3,187.0		lb		40/70	
Interval 33											
Stg #	Start Date	Top (ftKB)	Btm (ftKB)	Vol Clean...	Vol Slurry...	Comment					
33	3/3/2015	6,591.0	6,726.0	2949.30	3126.90	XL Gel:1819 bbl; Linear Gel:412 bbl; 15% HCL:24 bbl; Slickwater:658bbl; Freshwater:36 bbl					
Stim/Treat Additives											
Stg #	Add			Type		Amount		Units		Sand Size	
33	Proppant			Ottawa 20/40		141,294.0		lb		20/40	
33	Proppant			Ottawa 40/70		3,229.0		lb		40/70	



Lease Review All - Frac Summary

Well Name: RAZOR 33M-2804

API Number 051233925800		WPC ID 1CO0761113		Well Permit Number		Field Name DJ Horizontal Niobrara		County Weld		State CO						
Well Configuration Type Lateral/Horizontal		Orig KB Elv (ft) 4,747.50		Ground Elevation (ft) 4,729.00		Casing Flange Elevation (ft)		Tubing Head Elevation (ft)		Total Depth (ftKB) 13,178.0						
Original Spud Date 12/20/2014		Completion Date 3/3/2015		Asset Group Redtail		Responsible Engineer Charles Ohlson		N/S Dist (ft) 565.0		N/S Ref FSL		E/W Dist (ft) 771.0	E/W Ref FWL			
Lot		Quarter 1 SW	Quarter 2 SW	Quarter 3	Quarter 4	Section 33	Section Suffix	Section Type	Township 10	Township N/S Dir N	Range 58	Range E/W Dir W	Meridian			
Lateral/Horizontal - Original Hole, 6/17/2015 1:46:46 PM						Stim/Treat Stages										
<div>MD (ftKB) 108.6 1,586.0 2,820.2 4,040.4 5,127.6 5,629.3 5,673.2 6,170.6 6,261.2 6,452.1 6,592.8 6,790.0 6,821.9 7,122.0 7,256.9 7,454.1 7,587.9 7,785.1 7,919.9 8,117.1 8,252.0 8,449.1 8,578.1 8,779.9 8,915.0 9,111.9 9,247.0 9,443.9 9,579.1 9,772.0 9,910.1 10,102.0 10,244.1 10,439.0 10,574.1 10,771.0 10,905.8 11,103.0 11,236.9 11,435.0 11,568.9 11,766.1 11,900.9 12,098.1 12,232.9 12,432.1 12,564.0 12,761.2 12,896.0 13,089.9 13,166.7</div>	<div>D (ftKB) 108.6 1,586.0 2,820.2 4,040.4 5,127.6 5,629.3 5,673.2 6,170.6 6,261.2 6,452.1 6,592.8 6,790.0 6,821.9 7,122.0 7,256.9 7,454.1 7,587.9 7,785.1 7,919.9 8,117.1 8,252.0 8,449.1 8,578.1 8,779.9 8,915.0 9,111.9 9,247.0 9,443.9 9,579.1 9,772.0 9,910.1 10,102.0 10,244.1 10,439.0 10,574.1 10,771.0 10,905.8 11,103.0 11,236.9 11,435.0 11,568.9 11,766.1 11,900.9 12,098.1 12,232.9 12,432.1 12,564.0 12,761.2 12,896.0 13,089.9 13,166.7</div>	<div>n c l (ft KB B) 108.6 1,586.0 2,820.2 4,040.4 5,127.6 5,629.3 5,673.2 6,170.6 6,261.2 6,452.1 6,592.8 6,790.0 6,821.9 7,122.0 7,256.9 7,454.1 7,587.9 7,785.1 7,919.9 8,117.1 8,252.0 8,449.1 8,578.1 8,779.9 8,915.0 9,111.9 9,247.0 9,443.9 9,579.1 9,772.0 9,910.1 10,102.0 10,244.1 10,439.0 10,574.1 10,771.0 10,905.8 11,103.0 11,236.9 11,435.0 11,568.9 11,766.1 11,900.9 12,098.1 12,232.9 12,432.1 12,564.0 12,761.2 12,896.0 13,089.9 13,166.7</div>	<div>Vertical schematic (actual)</div>	Logs	Interval 34											
					Stg # 34	Start Date 3/3/2015	Top (ftKB) 6,392.0	Btm (ftKB) 6,527.0	Vol Clean... 3484.00	Vol Slurry... 3656.00	Comment XL Gel:2323 bbl; Linear Gel:412 bbl; 15% HCL:24 bbl; Slickwater:693bbl; Freshwater:32 bbl					
					Stim/Treat Additives											
					Stg #	Add	Type		Amount	Units	Sand Size					
					34	Proppant	Ottawa 20/40		140,798.0	lb	20/40					
					34	Proppant	Ottawa 40/70		3,226.0	lb	40/70					
					Interval 35											
					Stg # 35	Start Date 3/3/2015	Top (ftKB) 6,193.0	Btm (ftKB) 6,328.0	Vol Clean... 2890.80	Vol Slurry... 3065.40	Comment XL Gel:1802 bbl; Linear Gel:412 bbl; 15% HCL:24 bbl; Slickwater:601bbl; Freshwater:51 bbl					
					Stim/Treat Additives											
					Stg #	Add	Type		Amount	Units	Sand Size					
					35	Proppant	Ottawa 20/40		141,343.0	lb	20/40					
					35	Proppant	Ottawa 40/70		3,162.0	lb	40/70					
					Tubing - Production set at 5,674.2ftKB on 3/9/2015 06:00											
					Set Depth (ftKB) 5,674.2		Comment				Run Date 3/9/2015		Pull Date			
					Item Des		OD (in)		ID (in)	Len (ft)	Top (ftKB)		Btm (ftKB)			
					Tubing Hanger		7		1.995	0.69	18.4		19.1			
					Pup Joint 30.98ft 4.04ft 3.02ft 6.1ft		2 3/8		1.995	41.14	19.1		60.2			
					Tubing		2 3/8		1.995	1,729.12	60.2		1,789.3			
					CM-1 2.375 #7 C-1 TC Orifice Valve		2 3/8		1.995	4.13	1,789.3		1,793.5			
					Tubing		2 3/8		1.995	1,022.67	1,793.5		2,816.1			
					CM-1 2.375 #6 C-1 TC Orifice Valve		2 3/8		1.995	4.12	2,816.1		2,820.3			
					Tubing		2 3/8		1.995	651.86	2,820.3		3,472.1			
					CM-1 2.375 #5 C-1 TC Orifice Valve		2 3/8		1.995	4.05	3,472.1		3,476.2			
					Tubing		2 3/8		1.995	560.15	3,476.2		4,036.3			
					CM-1 2.375 #4 C-1 TC Orifice Valve		2 3/8		1.995	4.12	4,036.3		4,040.4			
					Tubing		2 3/8		1.995	556.65	4,040.4		4,597.1			
					CM-1 2.375 #3 C-1 TC Orifice Valve		2 3/8		1.995	4.12	4,597.1		4,601.2			
					Tubing		2 3/8		1.995	526.50	4,601.2		5,127.7			
					CM-1 2.375 #2 C-1 TC Orifice Valve		2 3/8		1.995	4.07	5,127.7		5,131.8			
					Tubing		2 3/8		1.995	493.32	5,131.8		5,625.1			
					CM-1 2.375 #1 C-1 TC Orifice Valve		2 3/8		1.995	4.07	5,625.1		5,629.2			
					Tubing		2 3/8		1.995	30.91	5,629.2		5,660.1			
					On-Off Tool		3.65		1.870	1.35	5,660.1		5,661.4			
					Packer		3.77		1.930	8.06	5,661.4		5,669.5			
					Pump Out Housing		2.6			3.10	5,669.5		5,672.6			
					Perforated Pup Jt		3.1		1.995	0.71	5,672.6		5,673.3			
					Bull Plug		3.1			0.91	5,673.3		5,674.2			
					Rod Strings											
					<des> on <dtmrun>											
					Rod Description					Run Date		Pull Date				
					Item Des		OD (in)		Len (ft)	Top (ftKB)		Btm (ftKB)				
					Other Strings											
					Set Depth (ftKB)		Comment				Run Date		Pull Date			
					Item Des		OD (in)		Len (ft)		Top (ftKB)		Btm (ftKB)			
					Other In Hole											
					Des		OD (in)		Run Date		Pull Date		Top (ftKB)		Btm (ftKB)	
					CFP		4		3/4/2015		3/6/2015		6,355.0		6,357.0	
					CFP		4		3/3/2015		3/6/2015		6,558.0		6,560.0	
					CFP		4		3/3/2015		3/6/2015		6,764.0		6,766.0	
					CFP		4		3/3/2015		3/6/2015		6,948.0		6,950.0	
					CFP		4		3/3/2015		3/6/2015		7,155.0		7,157.0	
					CFP		4		3/3/2015		3/6/2015		7,356.0		7,358.0	
					CFP		4		3/3/2015		3/6/2015		7,550.0		7,552.0	
					CFP		4		3/3/2015		3/6/2015		7,746.0		7,748.0	
					CFP		4		3/3/2015		3/6/2015		7,953.0		7,955.0	
					CFP		4		3/3/2015		3/6/2015		8,150.0		8,152.0	
					CFP		4		3/2/2015		3/6/2015		8,349.0		8,351.0	
					CFP		4		3/2/2015		3/6/2015		8,548.0		8,550.0	
					CFP		4		3/2/2015		3/6/2015		8,732.0		8,734.0	

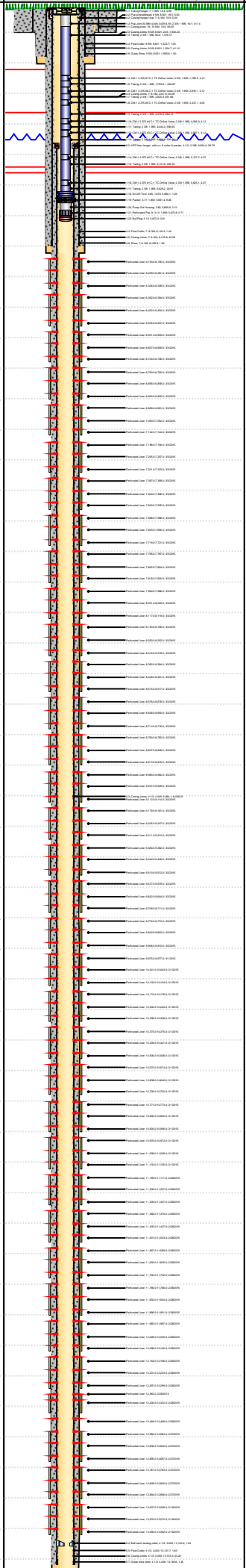


Lease Review All - Frac Summary

Well Name: RAZOR 33M-2804

API Number	WPC ID	Well Permit Number	Field Name	County	State
051233925800	1CO0761113		DJ Horizontal Niobrara	Weld	CO
Well Configuration Type	Orig KB Elv (ft)	Ground Elevation (ft)	Casing Flange Elevation (ft)	Tubing Head Elevation (ft)	Total Depth (ftKB)
Lateral/Horizontal	4,747.50	4,729.00			13,178.0
Original Spud Date	Completion Date	Asset Group	Responsible Engineer	N/S Dist (ft)	N/S Ref
12/20/2014	3/3/2015	Redtail	Charles Ohlson	565.0	FSL
				E/W Dist (ft)	E/W Ref
				771.0	FWL
Lot	Quarter 1	Quarter 2	Quarter 3	Quarter 4	Section
	SW	SW			33
					Section Suffix
					Section Type
					Township
					10 N
					Range
					58 W
					Range E/W Dir
					Meridian

Lateral/Horizontal - Original Hole, 6/17/2015 1:46:48 PM

MD (ftKB)	D (ft K B)	n c l (Logs	Des	OD (in)	Run Date	Pull Date	Top (ftKB)	Btm (ftKB)	
108.6	108.6	51			CFP	4	3/2/2015	3/6/2015	8,940.0	8,942.0	
1,586.0	1,586.0	52		CFP	4	3/2/2015	3/6/2015	9,145.0	9,147.0		
2,820.2	2,820.2	53		CFP	4	3/2/2015	3/6/2015	9,334.0	9,336.0		
4,040.4	4,040.4	54		CFP	4	3/2/2015	3/6/2015	9,538.0	9,540.0		
5,127.6	5,127.6	55		CFP	4	3/2/2015	3/6/2015	9,743.0	9,745.0		
5,629.3	5,629.3	56		CFP	4	3/2/2015	3/6/2015	9,926.0	9,928.0		
5,673.2	5,673.2	57		CFP	4	3/1/2015	3/6/2015	10,128.0	10,130.0		
6,170.6	6,170.6	58		CFP	4	3/1/2015	3/6/2015	10,340.0	10,342.0		
6,261.2	6,261.2	59		CFP	4	3/1/2015	3/6/2015	10,542.0	10,544.0		
6,452.1	6,452.1	60		CFP	4	3/1/2015	3/6/2015	10,726.0	10,728.0		
6,592.8	6,592.8	61		CFP	4	3/1/2015	3/6/2015	10,937.0	10,939.0		
6,790.0	6,790.0	62		CFP	4	3/1/2015	3/6/2015	11,124.0	11,126.0		
6,821.9	6,821.9	63		CFP	4	2/28/2015	3/6/2015	11,322.0	11,324.0		
7,122.0	7,122.0	64		CFP	4	2/28/2015	3/6/2015	11,534.0	11,536.0		
7,256.9	7,256.9	65		CFP	4	2/28/2015	3/6/2015	11,720.0	11,722.0		
7,454.1	7,454.1	66		CFP	4	2/28/2015	3/6/2015	11,926.0	11,928.0		
7,587.9	7,587.9	67		CFP	4	2/28/2015	3/6/2015	12,131.0	12,133.0		
7,785.1	7,785.1	68		CFP	4	2/28/2015	3/6/2015	12,320.0	12,322.0		
7,919.9	7,919.9	69		CFP	4	2/28/2015	3/6/2015	12,519.0	12,521.0		
8,117.1	8,117.1	70		CFP	4	2/27/2015	3/6/2015	12,728.0	12,730.0		
8,252.0	8,252.0	71		CFP	4	2/27/2015	3/6/2015	12,907.0	12,909.0		
8,449.1	8,449.1	72		CFP	4	2/16/2015	3/6/2015	13,100.0	13,102.0		
8,578.1	8,578.1	73		Bottom Hole Cores							
8,779.9	8,779.9	74				Date	Core #	Top (ftKB)	Btm (ftKB)	Recov (ft)	
8,915.0	8,915.0	75									
9,111.9	9,111.9	76									
9,247.0	9,247.0	77									
9,443.9	9,443.9	78									
9,579.1	9,579.1	79									
9,772.0	9,772.0	80									
9,910.1	9,910.1	81									
10,102.0	10,102.0	82									
10,244.1	10,244.1	83									
10,439.0	10,439.0	84									
10,574.1	10,574.1	85									
10,771.0	10,771.0	86									
10,905.8	10,905.8	87									
11,103.0	11,103.0	88									
11,236.9	11,236.9	89									
11,435.0	11,435.0	90									
11,568.9	11,568.9	91									
11,766.1	11,766.1	92									
11,900.9	11,900.9	93									
12,098.1	12,098.1	94									
12,232.9	12,232.9	95									
12,432.1	12,432.1	96									
12,564.0	12,564.0	97									
12,761.2	12,761.2	98									
12,896.0	12,896.0	99									
13,089.9	13,089.9	100									
13,166.7	13,166.7	101									