

State #32-16

General Location:

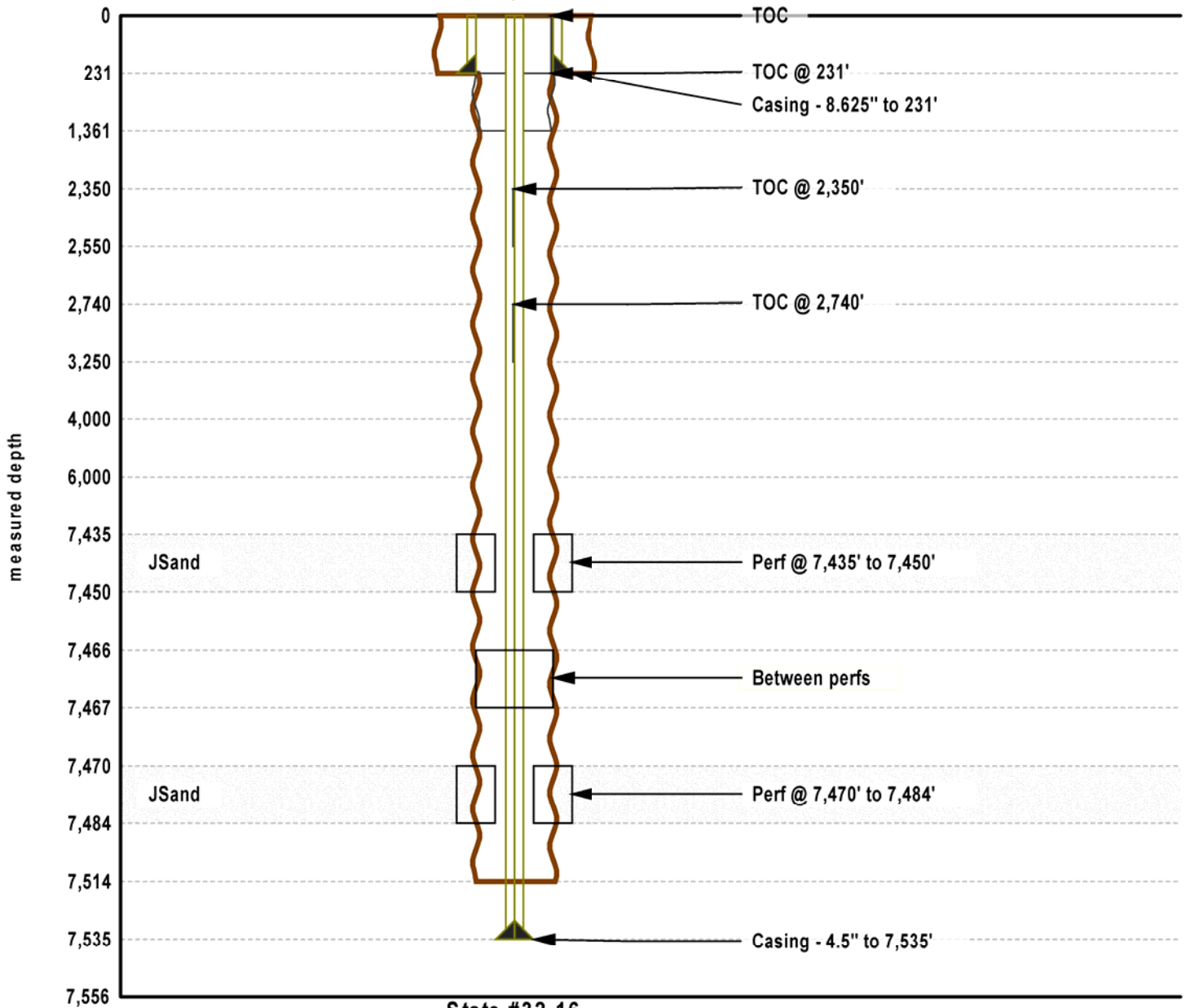
Swne Sec 16-5S-62W Arapahoe Cty

Latitude/Longitude: N39.61711700, W -104.33022400:

County: Arapahoe, State: CO

Spud Date: 8/24/1975

Total Depth: 7514



State #32-16

Initial Completion: 9/2/1975

Proposed Depth: 7600 Plug Back Depth: 7466