

Maul #20-2

Latitude/Longitude: N40.03978700, W-104.68202900:

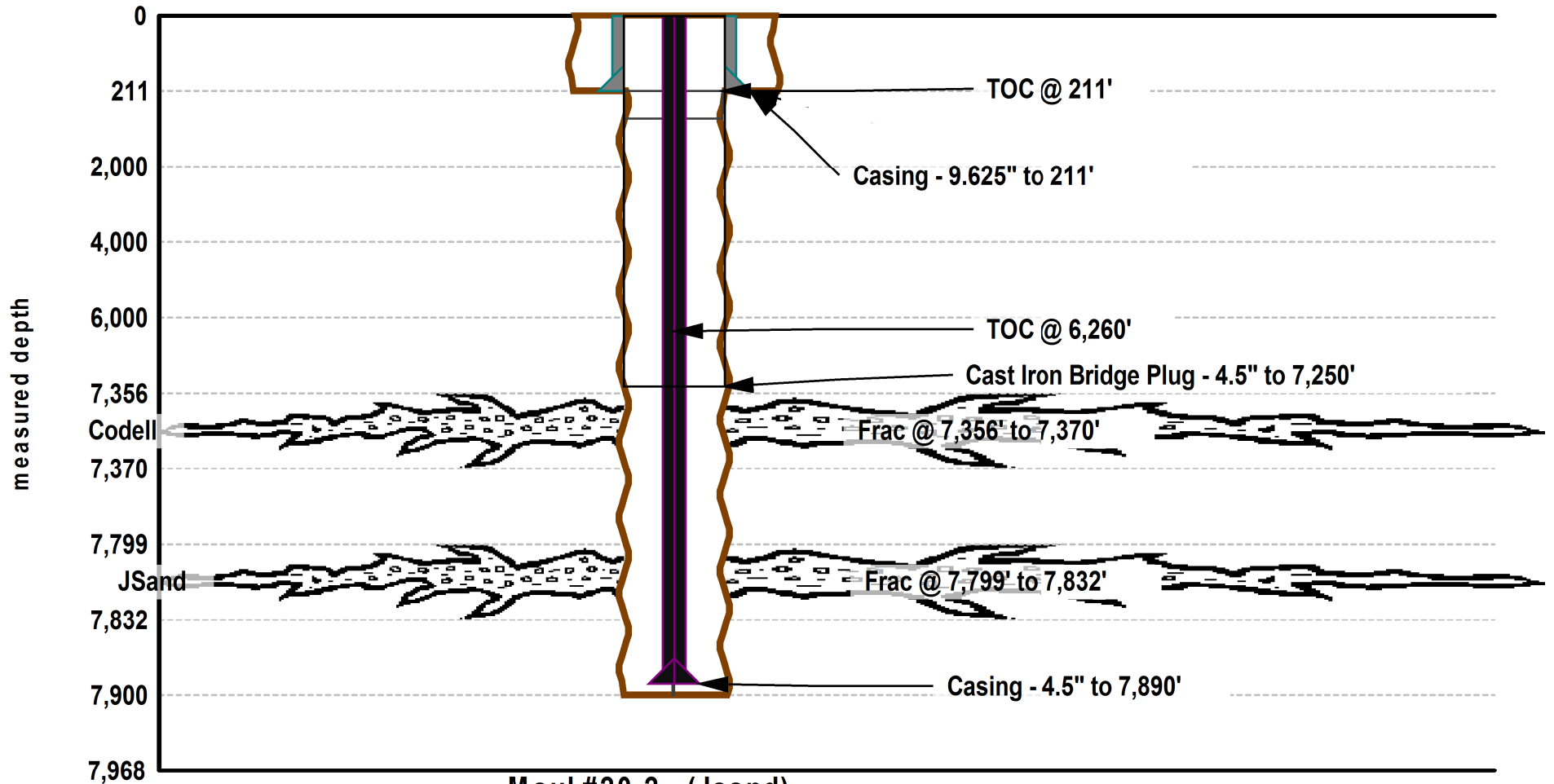
Township/Range: 20 001-N

Sene, Sec. 20, T1N-R65W, Weld Co., Co

County: Weld, State: CO

Spud Date: 5/29/1985

Total Depth: 7900



Maul #20-2 (Jsand)

Initial Completion: 6/14/1985

2nd Completion: 6/14/1985

Proposed Depth: 7900 Plug Back Depth: 7883