

BONANZA CREEK ENERGY INC.

WELD COUNTY, COLORADO (NAD 83)

SW SW SEC. 28 T5N R61W 6th P.M.

PRONGHORN 14-44-28HNC

ORIGINAL WELLBORE

15 June, 2015

Plan: PROPOSAL #2





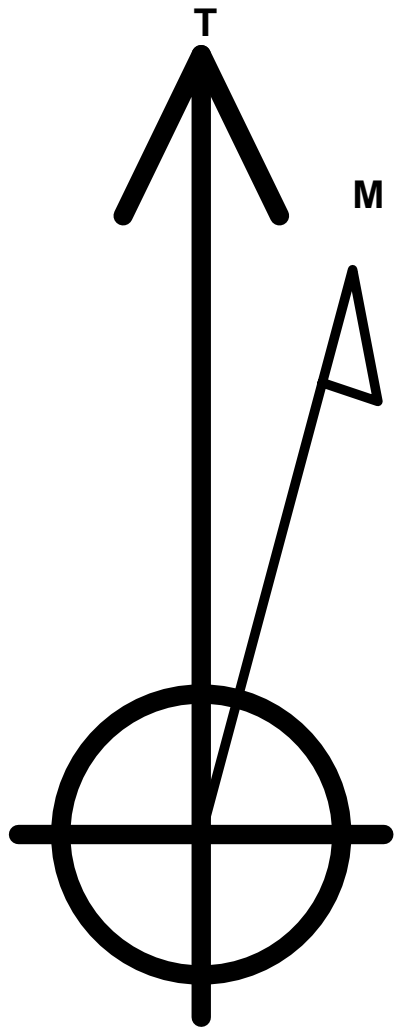
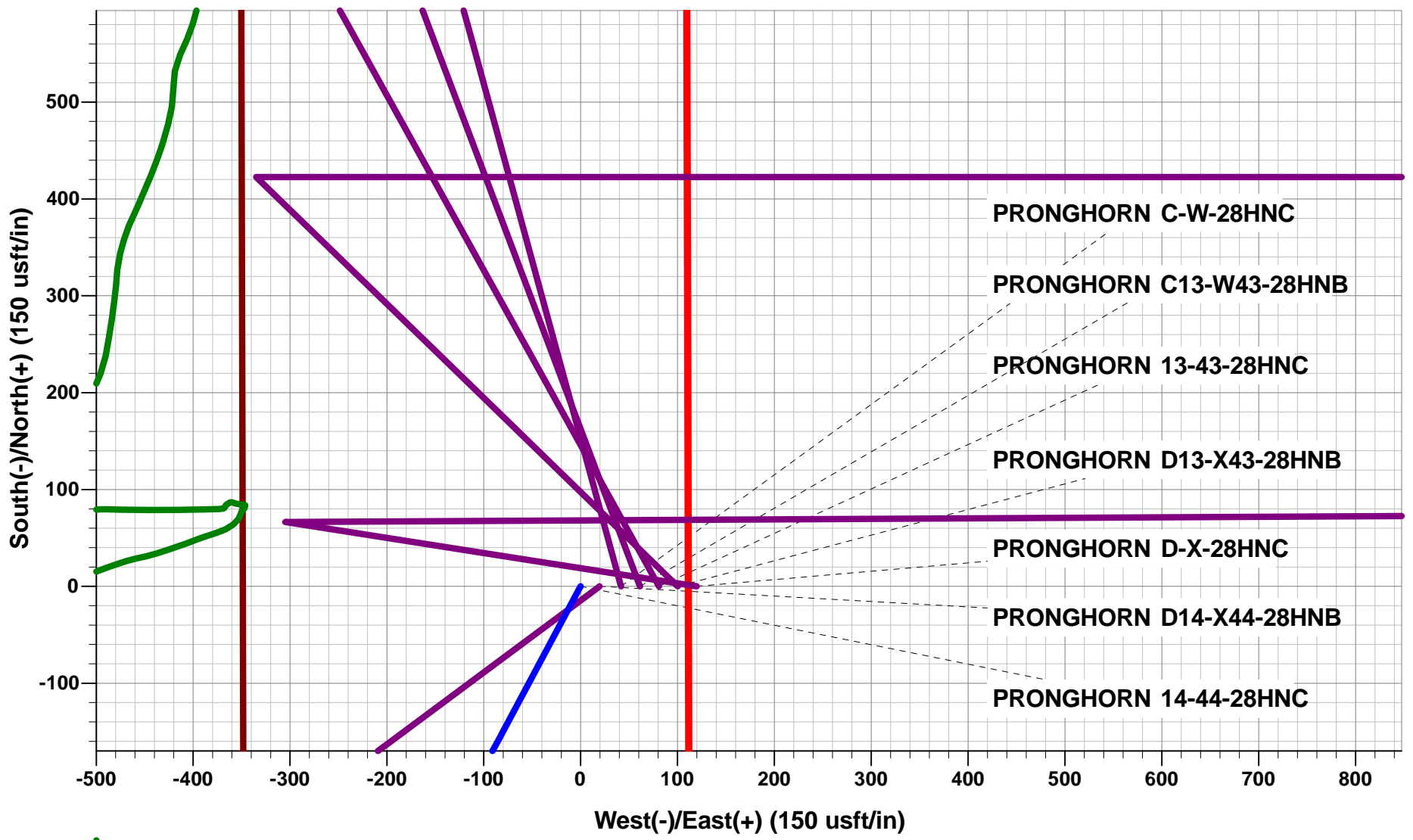
Project: WELD COUNTY, COLORADO (NAD 83)
Site: SW SW SEC. 28 T5N R61W 6th P.M.
Well: PRONGHORN 14-44-28HNC
Wellbore: ORIGINAL WELLBORE
Design: PROPOSAL #2

ANNOTATIONS

TVD	MD	Inc	Azi	+N/-S	+E/-W	VSect	Dep	Annotation
800.0	800.0	0.00	0.00	0.0	0.0	0.0	0.0	START NUDGE (2°/100ft BUR)
1297.7	1300.2	10.00	208.13	-38.4	-20.5	-15.6	43.6	EOB TO 10° INC
4615.3	4669.0	10.00	208.13	-554.4	-296.5	-224.7	628.7	END OF TANGENT
5112.9	5169.2	0.00	0.00	-592.8	-317.0	-240.2	672.3	EOD TO VERTICAL
5585.9	5642.2	0.00	0.00	-592.8	-317.0	-240.2	672.3	KOP (12°/100ft BUR)
6047.1	6267.2	75.00	89.70	-591.0	36.9	110.6	1026.2	START OF TANGENT
6073.0	6367.2	75.00	89.70	-590.5	133.5	206.4	1122.8	END OF TANGENT
6089.2	6492.2	90.00	89.70	-589.8	257.1	328.9	1246.4	7" ICP *NEW* - PRONGHORN 14-44-28HNC (P2)
6089.2	10732.8	90.00	89.71	-567.9	4497.6	4533.3	5486.9	BHL - PRONGHORN 14-44-28HNC (P2)

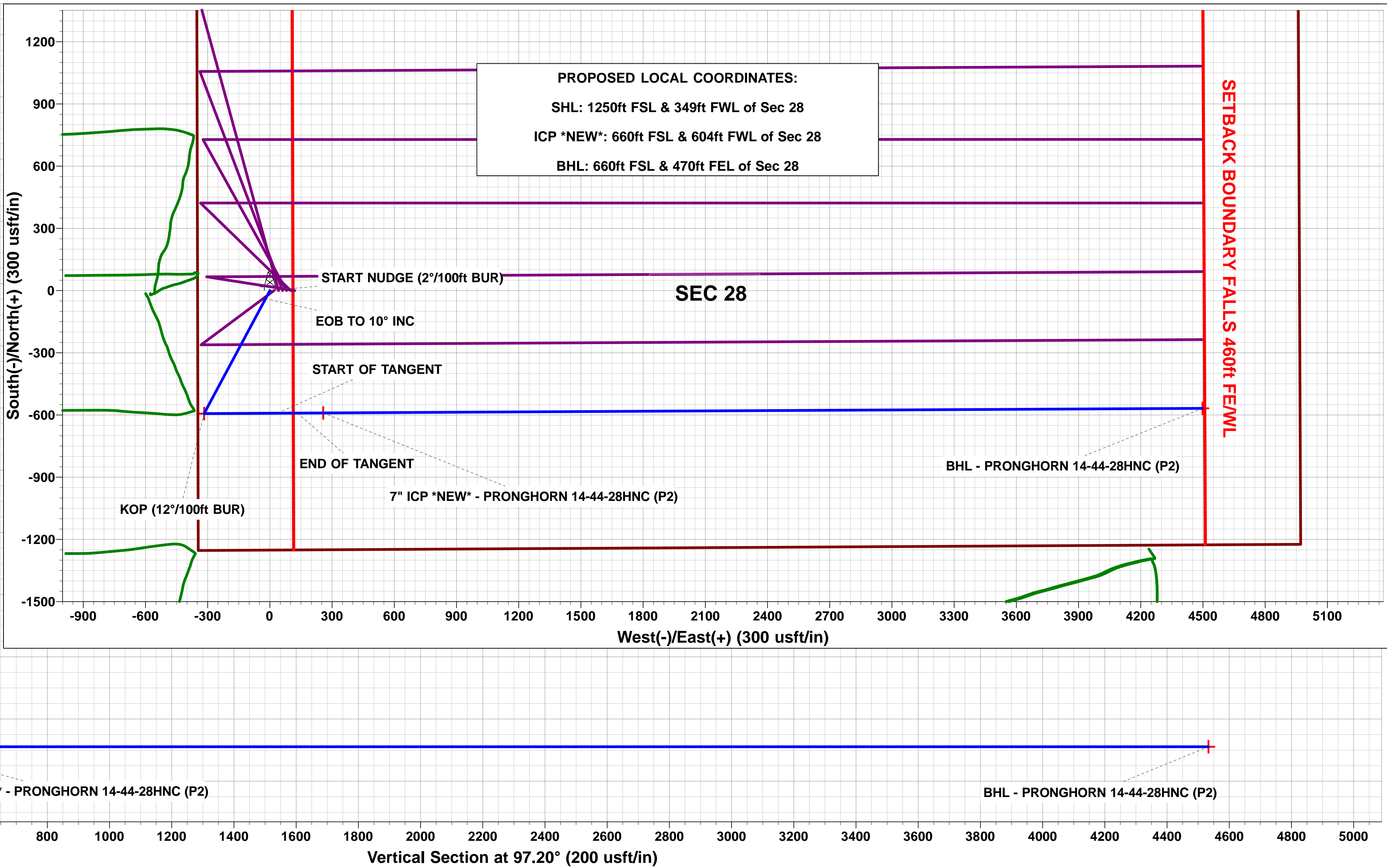
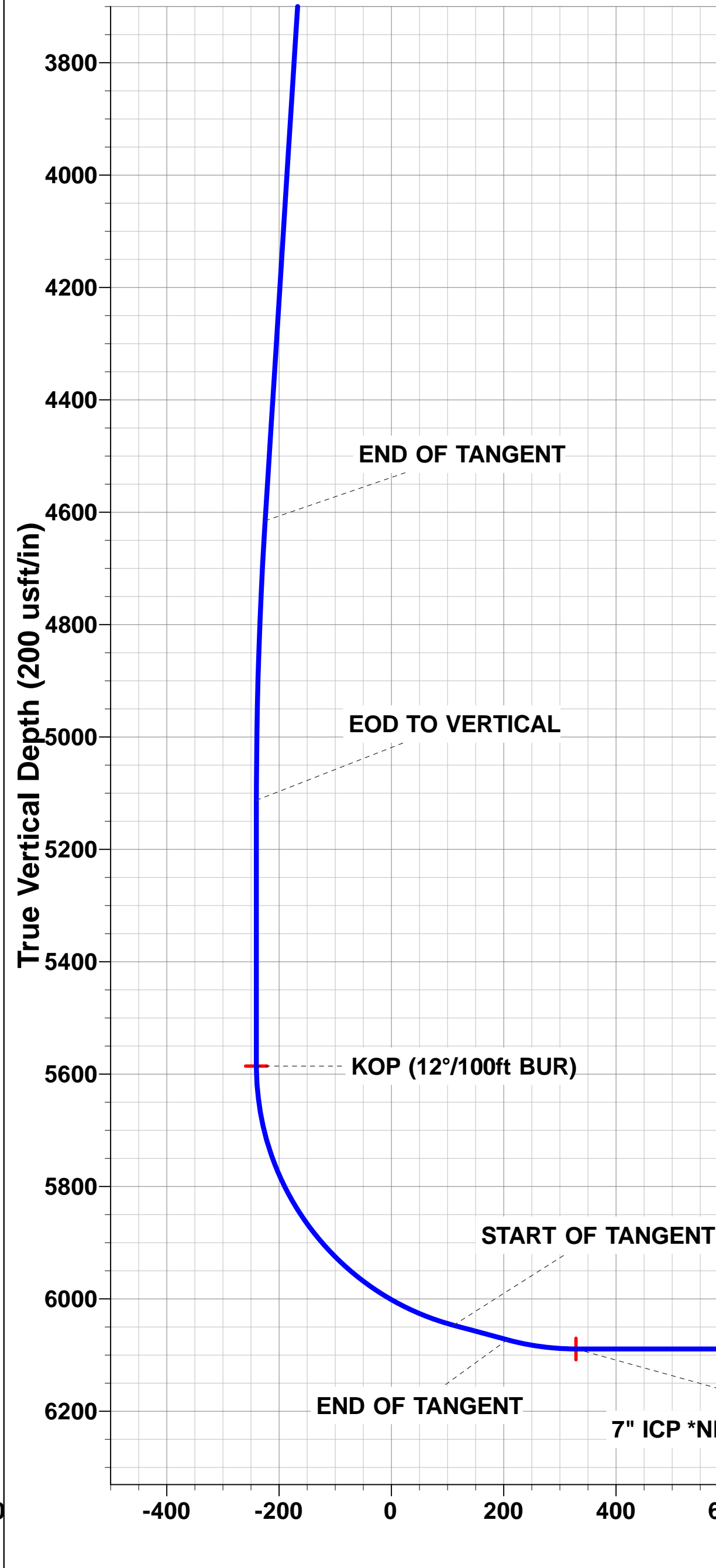
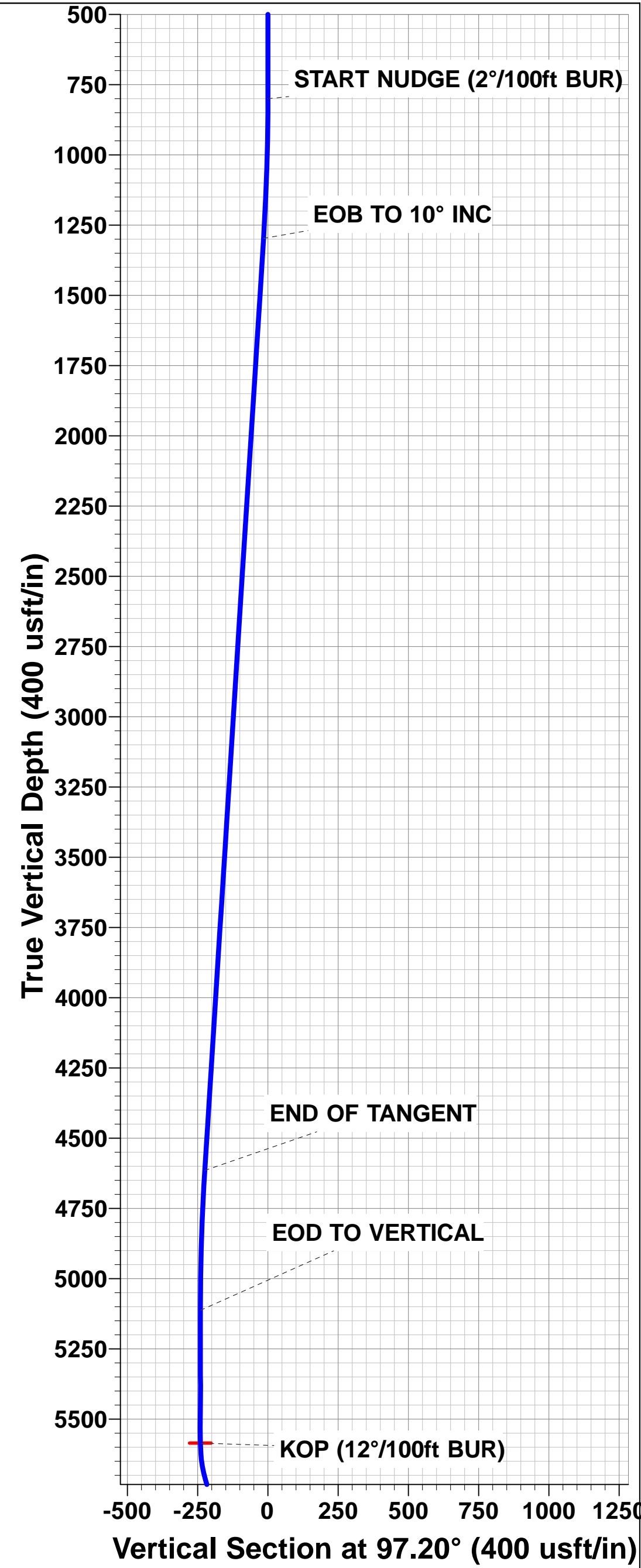
WELLBORE TARGET DETAILS (LAT/LONG)

Name	TVD	+N/-S	+E/-W	Latitude	Longitude
KOP - PRONGHORN 14-44-28HNC (P2)	5585.9	-592.8	-317.0	40.366383	-104.223478
BHL - PRONGHORN 14-44-28HNC (P2)	6089.2	-567.9	4497.6	40.366450	-104.206200
7" ICP *NEW* - PRONGHORN 14-44-28HNC (P2)	6089.2	-589.8	257.1	40.366391	-104.221417



Azimuths to True North
Magnetic North: 8.13°

Magnetic Field
Strength: 52663.0snT
Dip Angle: 66.96°
Date: 15/06/2015
Model: IGRF2015



Planning Report



Database:	EDM 5000.1 Single User Db	Local Co-ordinate Reference:	Well PRONGHORN 14-44-28HNC
Company:	BONANZA CREEK ENERGY INC.	TVD Reference:	KB-EST @ 4612.2usft
Project:	WELD COUNTY, COLORADO (NAD 83)	MD Reference:	KB-EST @ 4612.2usft
Site:	SW SW SEC. 28 T5N R61W 6th P.M.	North Reference:	True
Well:	PRONGHORN 14-44-28HNC	Survey Calculation Method:	Minimum Curvature
Wellbore:	ORIGINAL WELLBORE		
Design:	PROPOSAL #2		

Project	WELD COUNTY, COLORADO (NAD 83)		
Map System:	US State Plane 1983	System Datum:	Mean Sea Level
Geo Datum:	North American Datum 1983		
Map Zone:	Colorado Northern Zone		Using geodetic scale factor

Site	SW SW SEC. 28 T5N R61W 6th P.M.		
Site Position:		Northing:	1,379,471.89 usft
From:	Lat/Long	Easting:	3,356,038.93 usft
Position Uncertainty:	0.0 usft	Slot Radius:	1.10000ft
		Latitude:	40.368010
		Longitude:	-104.222190
		Grid Convergence:	0.83 °

Well	PRONGHORN 14-44-28HNC		
Well Position	+N/-S	0.0 usft	Northing:
	+E/-W	-41.8 usft	Easting:
Position Uncertainty	0.0 usft		Wellhead Elevation:
			Latitude:
			Longitude:
			Ground Level:

Wellbore	ORIGINAL WELLBORE				
Magnetics	Model Name	Sample Date	Declination (°)	Dip Angle (°)	Field Strength (nT)
	IGRF2015	15/06/2015	8.13	66.96	52,663

Design	PROPOSAL #2			
Audit Notes:				
Version:	Phase:	PROTOTYPE	Tie On Depth:	0.0
Vertical Section:	Depth From (TVD) (usft)	+N/-S (usft)	+E/-W (usft)	Direction (°)
	6,089.2	0.0	0.0	97.20

Plan Sections											
MD (usft)	Inc (°)	Azi (°)	Vertical Depth	SS (usft)	+N/-S (usft)	+E/-W (usft)	Dogleg Rate (°/100usft)	Build Rate (°/100usft)	Turn Rate (°/100usft)	TFO (°)	Target
0.0	0.00	0.00	0.0	-4,612.2	0.0	0.0	0.00	0.00	0.00	0.00	
800.0	0.00	0.00	800.0	-3,812.2	0.0	0.0	0.00	0.00	0.00	0.00	
1,300.2	10.00	208.13	1,297.6	-3,314.6	-38.4	-20.5	2.00	2.00	0.00	208.13	
4,669.0	10.00	208.13	4,615.3	3.1	-554.4	-296.5	0.00	0.00	0.00	0.00	
5,169.2	0.00	0.00	5,112.9	500.7	-592.8	-317.0	2.00	-2.00	0.00	180.00	
5,642.2	0.00	0.00	5,585.9	973.7	-592.8	-317.0	0.00	0.00	0.00	0.00	KOP - PRONGHOF
6,267.2	75.00	89.70	6,047.1	1,434.9	-591.0	36.9	12.00	12.00	0.00	89.70	
6,367.2	75.00	89.70	6,073.0	1,460.8	-590.5	133.5	0.00	0.00	0.00	0.00	
6,492.2	90.00	89.70	6,089.2	1,477.0	-589.8	257.0	12.00	12.00	0.00	0.00	
10,732.8	90.00	89.71	6,089.2	1,477.0	-567.9	4,497.6	0.00	0.00	0.00	80.00	BHL - PRONGHOR

Planning Report



Database:	EDM 5000.1 Single User Db	Local Co-ordinate Reference:	Well PRONGHORN 14-44-28HNC
Company:	BONANZA CREEK ENERGY INC.	TVD Reference:	KB-EST @ 4612.2usft
Project:	WELD COUNTY, COLORADO (NAD 83)	MD Reference:	KB-EST @ 4612.2usft
Site:	SW SW SEC. 28 T5N R61W 6th P.M.	North Reference:	True
Well:	PRONGHORN 14-44-28HNC	Survey Calculation Method:	Minimum Curvature
Wellbore:	ORIGINAL WELLBORE		
Design:	PROPOSAL #2		

Planned Survey

MD (usft)	Inc (°)	Azi (°)	TVD (usft)	SS (usft)	+N/-S (usft)	+E/-W (usft)	Vertical Section (usft)	Dogleg Rate (°/100usft)	Build Rate (°/100usft)	Turn Rate (°/100usft)
0.0	0.00	0.00	0.0	4,612.20	0.0	0.0	0.0	0.00	0.00	0.00
100.0	0.00	0.00	100.0	4,512.20	0.0	0.0	0.0	0.00	0.00	0.00
200.0	0.00	0.00	200.0	4,412.20	0.0	0.0	0.0	0.00	0.00	0.00
300.0	0.00	0.00	300.0	4,312.20	0.0	0.0	0.0	0.00	0.00	0.00
400.0	0.00	0.00	400.0	4,212.20	0.0	0.0	0.0	0.00	0.00	0.00
500.0	0.00	0.00	500.0	4,112.20	0.0	0.0	0.0	0.00	0.00	0.00
600.0	0.00	0.00	600.0	4,012.20	0.0	0.0	0.0	0.00	0.00	0.00
700.0	0.00	0.00	700.0	3,912.20	0.0	0.0	0.0	0.00	0.00	0.00
START NUDGE (2°/100ft BUR)										
800.0	0.00	0.00	800.0	3,812.20	0.0	0.0	0.0	0.00	0.00	0.00
900.0	2.00	208.13	900.0	3,712.22	-1.5	-0.8	-0.6	2.00	2.00	0.00
1,000.0	4.00	208.13	999.8	3,612.36	-6.2	-3.3	-2.5	2.00	2.00	0.00
1,100.0	6.00	208.13	1,099.5	3,512.75	-13.8	-7.4	-5.6	2.00	2.00	0.00
1,200.0	8.00	208.13	1,198.7	3,413.50	-24.6	-13.1	-10.0	2.00	2.00	0.00
1,300.0	10.00	208.13	1,297.5	3,314.73	-38.4	-20.5	-15.6	2.00	2.00	0.00
EOB TO 10° INC										
1,300.2	10.00	208.13	1,297.7	3,314.54	-38.4	-20.5	-15.6	1.56	1.56	0.00
1,400.0	10.00	208.13	1,395.9	3,216.25	-53.7	-28.7	-21.8	0.00	0.00	0.00
1,500.0	10.00	208.13	1,494.4	3,117.77	-69.0	-36.9	-28.0	0.00	0.00	0.00
1,600.0	10.00	208.13	1,592.9	3,019.30	-84.3	-45.1	-34.2	0.00	0.00	0.00
1,700.0	10.00	208.13	1,691.4	2,920.82	-99.7	-53.3	-40.4	0.00	0.00	0.00
1,800.0	10.00	208.13	1,789.9	2,822.34	-115.0	-61.5	-46.6	0.00	0.00	0.00
1,900.0	10.00	208.13	1,888.3	2,723.86	-130.3	-69.7	-52.8	0.00	0.00	0.00
2,000.0	10.00	208.13	1,986.8	2,625.38	-145.6	-77.9	-59.0	0.00	0.00	0.00
2,100.0	10.00	208.13	2,085.3	2,526.90	-160.9	-86.0	-65.2	0.00	0.00	0.00
2,200.0	10.00	208.13	2,183.8	2,428.42	-176.2	-94.2	-71.4	0.00	0.00	0.00
2,300.0	10.00	208.13	2,282.3	2,329.94	-191.6	-102.4	-77.6	0.00	0.00	0.00
2,400.0	10.00	208.13	2,380.7	2,231.46	-206.9	-110.6	-83.8	0.00	0.00	0.00
2,500.0	10.00	208.13	2,479.2	2,132.98	-222.2	-118.8	-90.0	0.00	0.00	0.00
2,600.0	10.00	208.13	2,577.7	2,034.50	-237.5	-127.0	-96.2	0.00	0.00	0.00
2,700.0	10.00	208.13	2,676.2	1,936.02	-252.8	-135.2	-102.5	0.00	0.00	0.00
2,800.0	10.00	208.13	2,774.7	1,837.54	-268.1	-143.4	-108.7	0.00	0.00	0.00
2,900.0	10.00	208.13	2,873.1	1,739.06	-283.5	-151.6	-114.9	0.00	0.00	0.00
3,000.0	10.00	208.13	2,971.6	1,640.58	-298.8	-159.8	-121.1	0.00	0.00	0.00
3,100.0	10.00	208.13	3,070.1	1,542.10	-314.1	-168.0	-127.3	0.00	0.00	0.00
3,200.0	10.00	208.13	3,168.6	1,443.62	-329.4	-176.1	-133.5	0.00	0.00	0.00
3,300.0	10.00	208.13	3,267.1	1,345.14	-344.7	-184.3	-139.7	0.00	0.00	0.00
3,400.0	10.00	208.13	3,365.5	1,246.66	-360.1	-192.5	-145.9	0.00	0.00	0.00
3,500.0	10.00	208.13	3,464.0	1,148.18	-375.4	-200.7	-152.1	0.00	0.00	0.00
3,600.0	10.00	208.13	3,562.5	1,049.70	-390.7	-208.9	-158.3	0.00	0.00	0.00
3,700.0	10.00	208.13	3,661.0	951.22	-406.0	-217.1	-164.5	0.00	0.00	0.00
3,800.0	10.00	208.13	3,759.5	852.74	-421.3	-225.3	-170.7	0.00	0.00	0.00
3,900.0	10.00	208.13	3,857.9	754.26	-436.6	-233.5	-176.9	0.00	0.00	0.00
4,000.0	10.00	208.13	3,956.4	655.78	-452.0	-241.7	-183.1	0.00	0.00	0.00
4,100.0	10.00	208.13	4,054.9	557.30	-467.3	-249.9	-189.4	0.00	0.00	0.00
4,200.0	10.00	208.13	4,153.4	458.82	-482.6	-258.0	-195.6	0.00	0.00	0.00
4,300.0	10.00	208.13	4,251.9	360.34	-497.9	-266.2	-201.8	0.00	0.00	0.00
4,400.0	10.00	208.13	4,350.3	261.86	-513.2	-274.4	-208.0	0.00	0.00	0.00
4,500.0	10.00	208.13	4,448.8	163.38	-528.6	-282.6	-214.2	0.00	0.00	0.00
4,600.0	10.00	208.13	4,547.3	64.90	-543.9	-290.8	-220.4	0.00	0.00	0.00
END OF TANGENT										
4,669.0	10.00	208.13	4,615.3	-3.05	-554.4	-296.5	-224.7	0.00	0.00	0.00
4,700.0	9.38	208.13	4,645.8	-33.61	-559.0	-298.9	-226.5	2.00	-2.00	0.00

Planning Report



Database:	EDM 5000.1 Single User Db	Local Co-ordinate Reference:	Well PRONGHORN 14-44-28HNC
Company:	BONANZA CREEK ENERGY INC.	TVD Reference:	KB-EST @ 4612.2usft
Project:	WELD COUNTY, COLORADO (NAD 83)	MD Reference:	KB-EST @ 4612.2usft
Site:	SW SW SEC. 28 T5N R61W 6th P.M.	North Reference:	True
Well:	PRONGHORN 14-44-28HNC	Survey Calculation Method:	Minimum Curvature
Wellbore:	ORIGINAL WELLBORE		
Design:	PROPOSAL #2		

Planned Survey

MD (usft)	Inc (°)	Azi (°)	TVD (usft)	SS (usft)	+N/-S (usft)	+E/-W (usft)	Vertical Section (usft)	Dogleg Rate (°/100usft)	Build Rate (°/100usft)	Turn Rate (°/100usft)
4,800.0	7.38	208.13	4,744.7	-132.53	-571.9	-305.8	-231.7	2.00	-2.00	0.00
4,900.0	5.38	208.13	4,844.1	-231.91	-581.7	-311.0	-235.7	2.00	-2.00	0.00
5,000.0	3.38	208.13	4,943.8	-331.61	-588.4	-314.6	-238.4	2.00	-2.00	0.00
5,100.0	1.38	208.13	5,043.7	-431.52	-592.1	-316.6	-239.9	2.00	-2.00	0.00
EOD TO VERTICAL										
5,169.2	0.00	0.00	5,112.9	-500.71	-592.8	-317.0	-240.2	2.00	-2.00	0.00
5,200.0	0.00	0.00	5,143.7	-531.51	-592.8	-317.0	-240.2	0.00	0.00	0.00
5,300.0	0.00	0.00	5,243.7	-631.51	-592.8	-317.0	-240.2	0.00	0.00	0.00
5,400.0	0.00	0.00	5,343.7	-731.51	-592.8	-317.0	-240.2	0.00	0.00	0.00
5,500.0	0.00	0.00	5,443.7	-831.51	-592.8	-317.0	-240.2	0.00	0.00	0.00
5,600.0	0.00	0.00	5,543.7	-931.51	-592.8	-317.0	-240.2	0.00	0.00	0.00
KOP (12°/100ft BUR)										
5,642.2	0.00	0.00	5,585.9	-973.71	-592.8	-317.0	-240.2	0.00	0.00	0.00
5,700.0	6.94	89.70	5,643.6	-1,031.37	-592.8	-313.5	-236.8	12.00	12.00	0.00
5,800.0	18.94	89.70	5,740.9	-1,128.66	-592.7	-291.2	-214.6	12.00	12.00	0.00
5,900.0	30.94	89.70	5,831.4	-1,219.17	-592.5	-249.1	-172.9	12.00	12.00	0.00
6,000.0	42.94	89.70	5,911.1	-1,298.95	-592.2	-189.1	-113.4	12.00	12.00	0.00
6,100.0	54.94	89.70	5,976.7	-1,364.52	-591.8	-113.8	-38.8	12.00	12.00	0.00
6,200.0	66.94	89.70	6,025.2	-1,413.01	-591.3	-26.6	47.7	12.00	12.00	0.00
START OF TANGENT										
6,267.2	75.00	89.70	6,047.1	-1,434.90	-591.0	36.9	110.6	12.00	12.00	0.00
6,300.0	75.00	89.70	6,055.6	-1,443.39	-590.8	68.6	142.1	0.00	0.00	0.00
END OF TANGENT										
6,367.2	75.00	89.70	6,073.0	-1,460.78	-590.5	133.5	206.4	0.00	0.00	0.00
6,400.0	78.94	89.70	6,080.4	-1,468.17	-590.3	165.4	238.1	12.00	12.00	0.00
7" ICP *NEW* - PRONGHORN 14-44-28HNC (P2)										
6,492.2	90.00	89.70	6,089.2	-1,477.05	-589.8	257.1	328.9	12.00	12.00	0.00
6,500.0	90.00	89.70	6,089.2	-1,477.05	-589.8	264.9	336.7	0.00	0.00	0.00
6,600.0	90.00	89.70	6,089.2	-1,477.05	-589.3	364.9	435.8	0.00	0.00	0.00
6,700.0	90.00	89.70	6,089.2	-1,477.05	-588.8	464.9	535.0	0.00	0.00	0.00
6,800.0	90.00	89.70	6,089.2	-1,477.05	-588.2	564.9	634.1	0.00	0.00	0.00
6,900.0	90.00	89.70	6,089.2	-1,477.05	-587.7	664.9	733.2	0.00	0.00	0.00
7,000.0	90.00	89.70	6,089.2	-1,477.05	-587.2	764.9	832.4	0.00	0.00	0.00
7,100.0	90.00	89.70	6,089.2	-1,477.05	-586.7	864.9	931.5	0.00	0.00	0.00
7,200.0	90.00	89.70	6,089.2	-1,477.05	-586.1	964.9	1,030.7	0.00	0.00	0.00
7,300.0	90.00	89.70	6,089.2	-1,477.05	-585.6	1,064.9	1,129.8	0.00	0.00	0.00
7,400.0	90.00	89.70	6,089.2	-1,477.04	-585.1	1,164.9	1,229.0	0.00	0.00	0.00
7,500.0	90.00	89.70	6,089.2	-1,477.04	-584.6	1,264.8	1,328.1	0.00	0.00	0.00
7,600.0	90.00	89.70	6,089.2	-1,477.04	-584.1	1,364.8	1,427.3	0.00	0.00	0.00
7,700.0	90.00	89.70	6,089.2	-1,477.04	-583.5	1,464.8	1,526.4	0.00	0.00	0.00
7,800.0	90.00	89.70	6,089.2	-1,477.04	-583.0	1,564.8	1,625.6	0.00	0.00	0.00
7,900.0	90.00	89.70	6,089.2	-1,477.04	-582.5	1,664.8	1,724.7	0.00	0.00	0.00
8,000.0	90.00	89.70	6,089.2	-1,477.04	-582.0	1,764.8	1,823.8	0.00	0.00	0.00
8,100.0	90.00	89.70	6,089.2	-1,477.04	-581.5	1,864.8	1,923.0	0.00	0.00	0.00
8,200.0	90.00	89.70	6,089.2	-1,477.04	-580.9	1,964.8	2,022.1	0.00	0.00	0.00
8,300.0	90.00	89.70	6,089.2	-1,477.04	-580.4	2,064.8	2,121.3	0.00	0.00	0.00
8,400.0	90.00	89.70	6,089.2	-1,477.04	-579.9	2,164.8	2,220.4	0.00	0.00	0.00
8,500.0	90.00	89.70	6,089.2	-1,477.04	-579.4	2,264.8	2,319.6	0.00	0.00	0.00
8,600.0	90.00	89.70	6,089.2	-1,477.04	-578.9	2,364.8	2,418.7	0.00	0.00	0.00
8,700.0	90.00	89.70	6,089.2	-1,477.03	-578.4	2,464.8	2,517.9	0.00	0.00	0.00
8,800.0	90.00	89.70	6,089.2	-1,477.03	-577.8	2,564.8	2,617.0	0.00	0.00	0.00
8,900.0	90.00	89.70	6,089.2	-1,477.03	-577.3	2,664.8	2,716.2	0.00	0.00	0.00
9,000.0	90.00	89.70	6,089.2	-1,477.03	-576.8	2,764.8	2,815.3	0.00	0.00	0.00
9,100.0	90.00	89.70	6,089.2	-1,477.03	-576.3	2,864.8	2,914.5	0.00	0.00	0.00

Planning Report



Database:	EDM 5000.1 Single User Db	Local Co-ordinate Reference:	Well PRONGHORN 14-44-28HNC
Company:	BONANZA CREEK ENERGY INC.	TVD Reference:	KB-EST @ 4612.2usft
Project:	WELD COUNTY, COLORADO (NAD 83)	MD Reference:	KB-EST @ 4612.2usft
Site:	SW SW SEC. 28 T5N R61W 6th P.M.	North Reference:	True
Well:	PRONGHORN 14-44-28HNC	Survey Calculation Method:	Minimum Curvature
Wellbore:	ORIGINAL WELLBORE		
Design:	PROPOSAL #2		

Planned Survey										
MD (usft)	Inc (°)	Azi (°)	TVD (usft)	SS (usft)	+N/-S (usft)	+E/-W (usft)	Vertical Section (usft)	Dogleg Rate (°/100usft)	Build Rate (°/100usft)	Turn Rate (°/100usft)
9,200.0	90.00	89.70	6,089.2	-1,477.03	-575.8	2,964.8	3,013.6	0.00	0.00	0.00
9,300.0	90.00	89.70	6,089.2	-1,477.03	-575.3	3,064.8	3,112.7	0.00	0.00	0.00
9,400.0	90.00	89.70	6,089.2	-1,477.02	-574.7	3,164.8	3,211.9	0.00	0.00	0.00
9,500.0	90.00	89.71	6,089.2	-1,477.02	-574.2	3,264.8	3,311.0	0.00	0.00	0.00
9,600.0	90.00	89.71	6,089.2	-1,477.02	-573.7	3,364.8	3,410.2	0.00	0.00	0.00
9,700.0	90.00	89.71	6,089.2	-1,477.02	-573.2	3,464.8	3,509.3	0.00	0.00	0.00
9,800.0	90.00	89.71	6,089.2	-1,477.02	-572.7	3,564.8	3,608.5	0.00	0.00	0.00
9,900.0	90.00	89.71	6,089.2	-1,477.02	-572.2	3,664.8	3,707.6	0.00	0.00	0.00
10,000.0	90.00	89.71	6,089.2	-1,477.01	-571.7	3,764.8	3,806.8	0.00	0.00	0.00
10,100.0	90.00	89.71	6,089.2	-1,477.01	-571.1	3,864.8	3,905.9	0.00	0.00	0.00
10,200.0	90.00	89.71	6,089.2	-1,477.01	-570.6	3,964.8	4,005.1	0.00	0.00	0.00
10,300.0	90.00	89.71	6,089.2	-1,477.01	-570.1	4,064.8	4,104.2	0.00	0.00	0.00
10,400.0	90.00	89.71	6,089.2	-1,477.01	-569.6	4,164.8	4,203.4	0.00	0.00	0.00
10,500.0	90.00	89.71	6,089.2	-1,477.00	-569.1	4,264.8	4,302.5	0.00	0.00	0.00
10,600.0	90.00	89.71	6,089.2	-1,477.00	-568.6	4,364.8	4,401.7	0.00	0.00	0.00
10,700.0	90.00	89.71	6,089.2	-1,477.00	-568.1	4,464.8	4,500.8	0.00	0.00	0.00
BHL - PRONGHORN 14-44-28HNC (P2)										
10,732.8	90.00	89.71	6,089.2	-1,477.00	-567.9	4,497.6	4,533.3	0.00	0.00	0.00

Plan Annotations				
MD (usft)	TVD (usft)	Local Coordinates		Comment
		+N/-S (usft)	+E/-W (usft)	
800.0	800.0	0.0	0.0	START NUDGE (2°/100ft BUR)
1,300.2	1,297.7	-38.4	-20.5	EOB TO 10° INC
4,669.0	4,615.3	-554.4	-296.5	END OF TANGENT
5,169.2	5,112.9	-592.8	-317.0	EOD TO VERTICAL
5,642.2	5,585.9	-592.8	-317.0	KOP (12°/100ft BUR)
6,267.2	6,047.1	-591.0	36.9	START OF TANGENT
6,367.2	6,073.0	-590.5	133.5	END OF TANGENT
6,492.2	6,089.2	-589.8	257.1	7" ICP *NEW* - PRONGHORN 14-44-28HNC (P2)
10,732.8	6,089.2	-567.9	4,497.6	BHL - PRONGHORN 14-44-28HNC (P2)