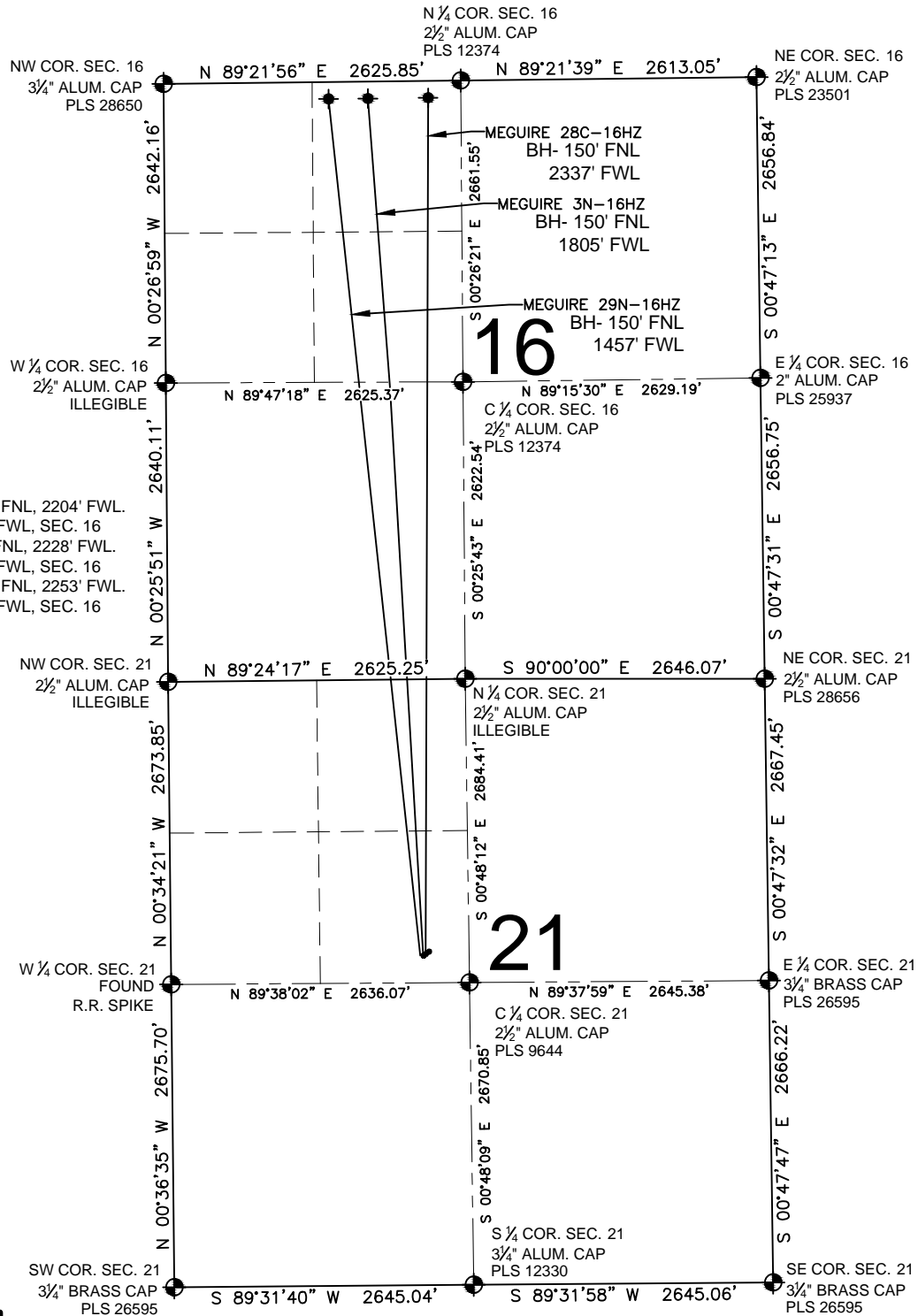


# MEGUIRE 3N-16HZ MULTI-WELL PLAN

SECTION 21, TOWNSHIP 2 NORTH, RANGE 65 WEST, 6TH P.M.



## NOTES:

MEGUIRE 29N-16HZ TO BE AT 2442' FNL, 2204' FWL.  
BOTTOM HOLE AT 150' FNL & 1457' FWL, SEC. 16  
MEGUIRE 3N-16HZ TO BE AT 2425' FNL, 2228' FWL.  
BOTTOM HOLE AT 150' FNL & 1805' FWL, SEC. 16  
MEGUIRE 28C-16HZ TO BE AT 2407' FNL, 2253' FWL.  
BOTTOM HOLE AT 150' FNL & 2337' FWL, SEC. 16

## LEGEND

- = EXISTING MONUMENT
- = PROPOSED WELL
- ◆ = BOTTOM HOLE
- ◆ = EXISTING WELL
- BH = BOTTOM HOLE
- = CALCULATED POSITION

PREPARED BY:



KERR-MCGEE OIL & GAS ONSHORE LP

FIELD DATE:

10-17-14

DRAWING DATE:

11-03-14

SURFACE LOCATION:

SE 1/4, NW 1/4, SEC. 21, T2N, R65W, 6TH P.M.

WELD COUNTY, COLORADO

