



# Kerr-McGee Oil & Gas Onshore LP

A subsidiary of Anadarko Petroleum Corporation

1099 18<sup>th</sup> Street  
Denver, CO 80202  
720-929-6000

June 8, 2015

Matt Lepore  
Director, Colorado Oil and Gas Conservation Commission  
Department of Natural Resources  
The Chancery Building  
1120 Lincoln Street, Suite 801  
Denver, CO 80203

Re: **30 Day Certification Letter - 318A.e**  
MEGUIRE 3N-16HZ (COGCC DOC# 400821343)  
Township 2 North, Range 65 West  
Section 21: SENW  
Unit Acreage: 320  
Unit Spacing: 2N-65W-9: SESW; 16: E2W2; 21: E2NW, NESW  
Weld County, Colorado

Dear Director Lepore:

Kerr McGee Oil and Gas Onshore LP ("KMG") hereby certifies that KMG owns one hundred percent (100%) of the leasehold interest in the mineral rights in the proposed spacing unit. KMG hereby respectfully requests approval of this boundary well.

If you have any questions or issues regarding this permit, please contact our office.

Sincerely,

**Kerr-McGee Oil and Gas Onshore LP**

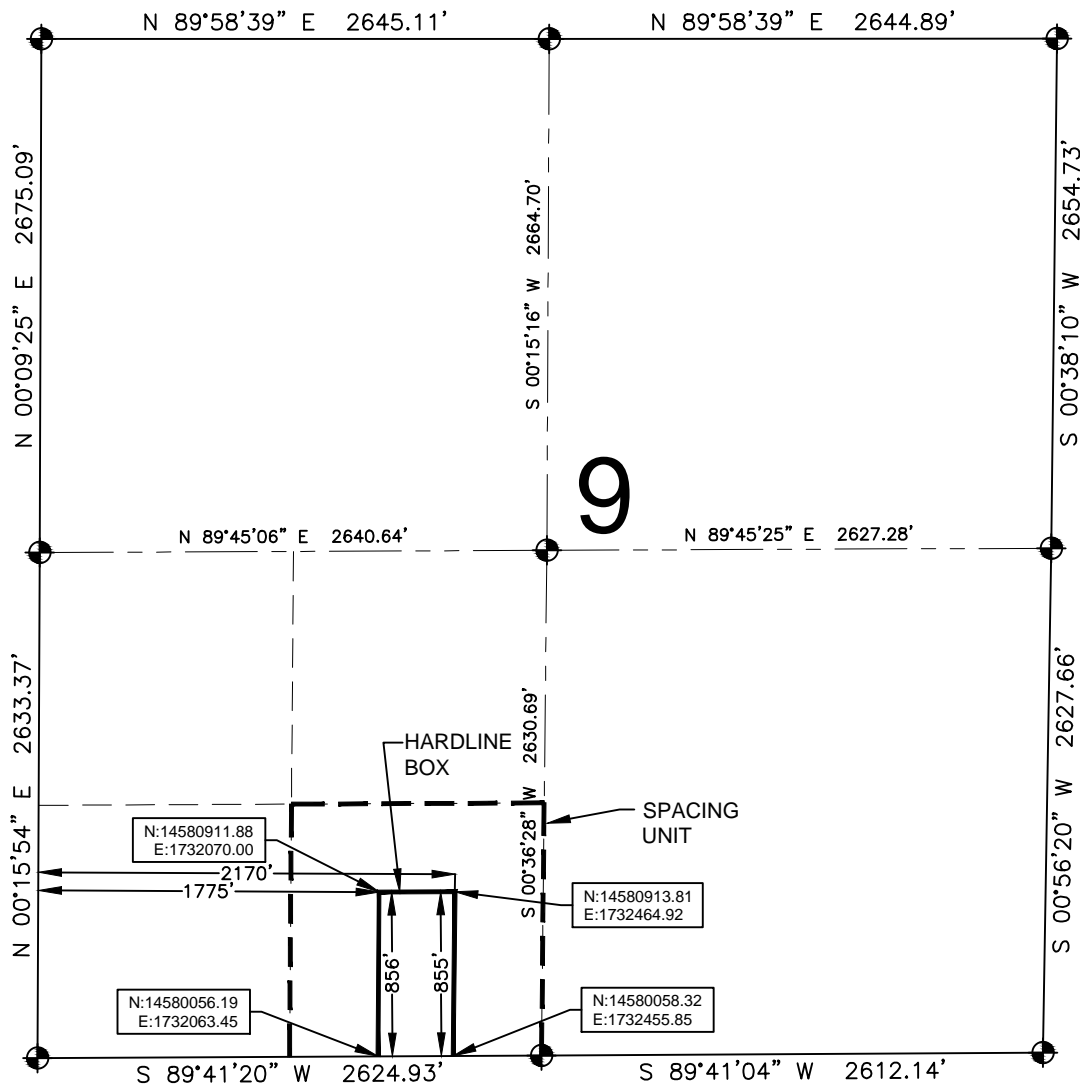
A blue ink signature of Craig Richardson, consisting of a stylized 'C' followed by a horizontal line.

Craig Richardson  
Regulatory Analyst II

Enclosure

# HARDLINE EXHIBIT: MEGUIRE 3N-16HZ

SECTION 9, TOWNSHIP 2 NORTH, RANGE 65 WEST, 6TH P.M.



## LEGEND

- = EXISTING MONUMENT
- = PROPOSED HEEL
- = CALCULATED POSITION
- ◆ = BOTTOM HOLE
- BH = BOTTOM HOLE

## HEEL LOCATION

UTM 13  
LATITUDE= 40.124355°  
LONGITUDE= 104.671752°  
  
LATITUDE= 40°07'27.678"  
LONGITUDE= 104°40'18.307"

## QRT/QRT SECTIONS WITHIN PATH OF THE HARDLINE

SESW, SEC. 9

## BOTTOM HOLE LOCATION

NAD83  
LATITUDE= 40.145557°  
LONGITUDE= 104.671938°  
  
LATITUDE= 40°08'44.005"  
LONGITUDE= 104°40'18.977"

## AVAILABLE FOOTAGE

9693'

## NOTES:

- THIS DOCUMENT IS NOT A LAND SURVEY PLAT OR IMPROVEMENT SURVEY PLAT. THIS DOCUMENT DOES NOT REFLECT A FIELD SURVEY. SECTION BREAKDOWN, MONUMENTATION AND HORIZONTAL POSITIONS SHOWN ARE BASED ON THE HEEL AND BOTTOM HOLE LOCATION PROVIDED BY ANADARKO PETROLEUM CORPORATION

PREPARED BY:

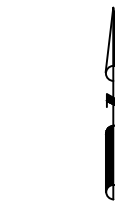


SHEET 1 OF 3

DRAWING DATE:  
02-02-15

BY: SMF  
CHECKED: TJN

HEEL LOCATION:  
SE 1/4 NW 1/4,  
SEC. 21, T2N, R65W, 6TH P.M.  
WELD COUNTY, COLORADO

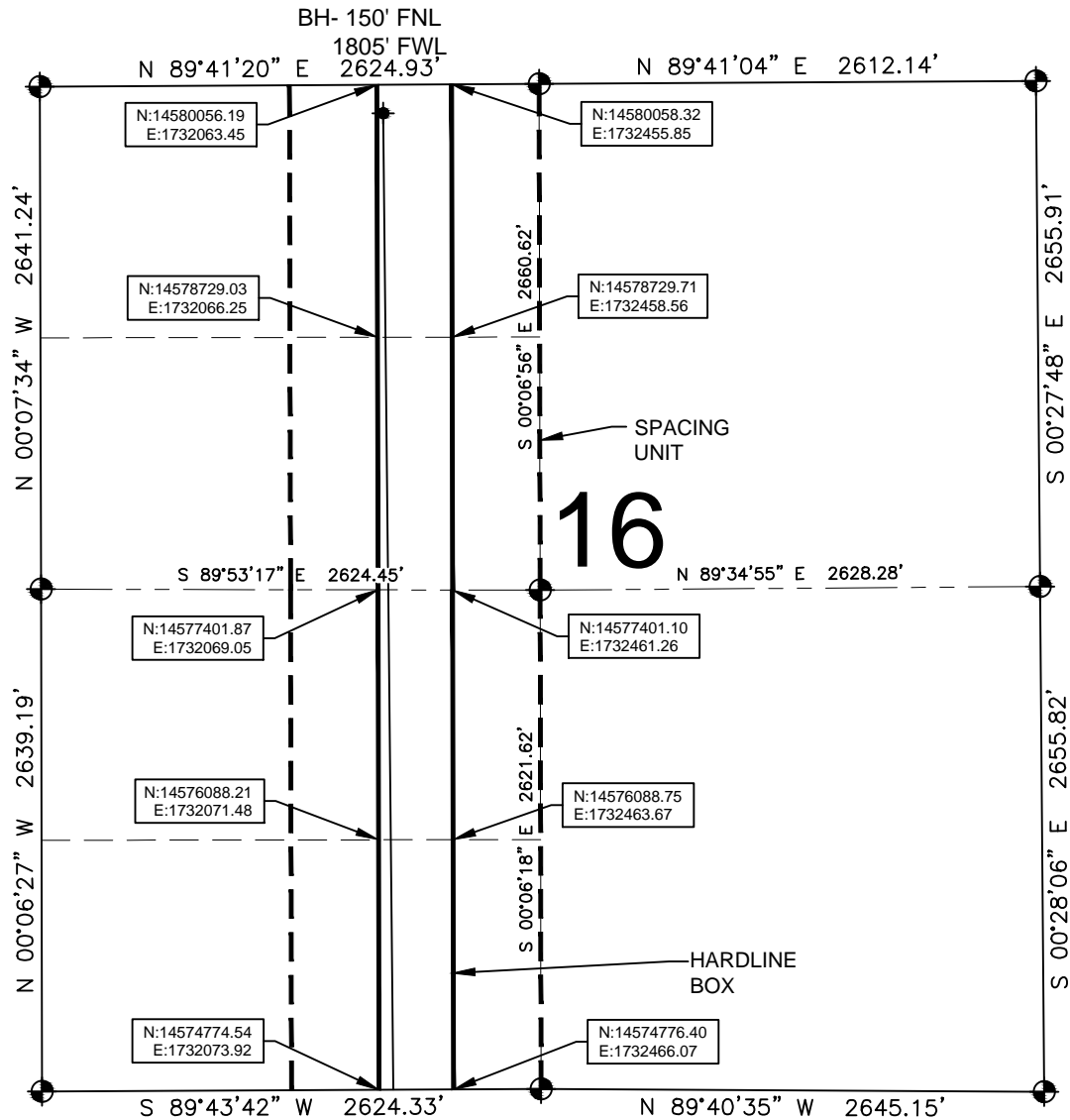


0 500 1000

SCALE: 1"= 1000'

# HARDLINE EXHIBIT: MEGUIRE 3N-16HZ

SECTION 16, TOWNSHIP 2 NORTH, RANGE 65 WEST, 6TH P.M.



## LEGEND

- = EXISTING MONUMENT
- = PROPOSED HEEL
- = CALCULATED POSITION
- ◆ = BOTTOM HOLE
- BH = BOTTOM HOLE

## QRT/QRT SECTIONS WITHIN PATH OF THE HARDLINE

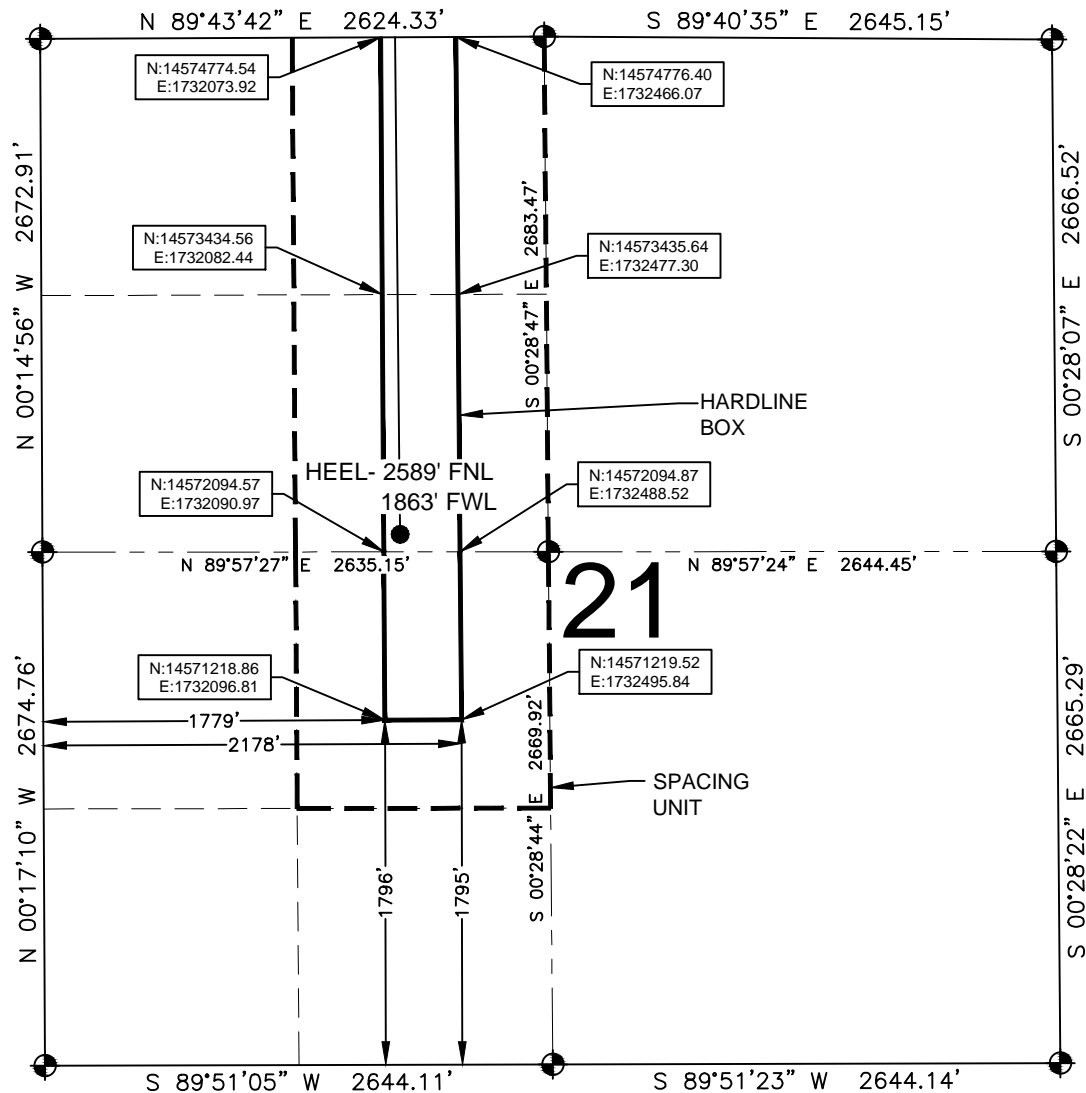
NENW, SEC. 16  
SEnw, SEC. 16  
NESW, SEC. 16  
SESW, SEC. 16

## NOTES:

- THIS DOCUMENT IS NOT A LAND SURVEY PLAT OR IMPROVEMENT SURVEY PLAT. THIS DOCUMENT DOES NOT REFLECT A FIELD SURVEY. SECTION BREAKDOWN, MONUMENTATION AND HORIZONTAL POSITIONS SHOWN ARE BASED ON THE HEEL AND BOTTOM HOLE LOCATION PROVIDED BY ANADARKO PETROLEUM CORPORATION

# HARDLINE EXHIBIT: MEGUIRE 3N-16HZ

SECTION 21, TOWNSHIP 2 NORTH, RANGE 65 WEST, 6TH P.M.



## LEGEND

- = EXISTING MONUMENT
- = PROPOSED HEEL
- = CALCULATED POSITION
- ◆ = BOTTOM HOLE
- BH = BOTTOM HOLE

## QRT/QRT SECTIONS WITHIN PATH OF THE HARDLINE

- NENW, SEC. 21
- SENW, SEC. 21
- NESW, SEC. 21

## NOTES:

- THIS DOCUMENT IS NOT A LAND SURVEY PLAT OR IMPROVEMENT SURVEY PLAT. THIS DOCUMENT DOES NOT REFLECT A FIELD SURVEY. SECTION BREAKDOWN, MONUMENTATION AND HORIZONTAL POSITIONS SHOWN ARE BASED ON THE HEEL AND BOTTOM HOLE LOCATION PROVIDED BY ANADARKO PETROLEUM CORPORATION