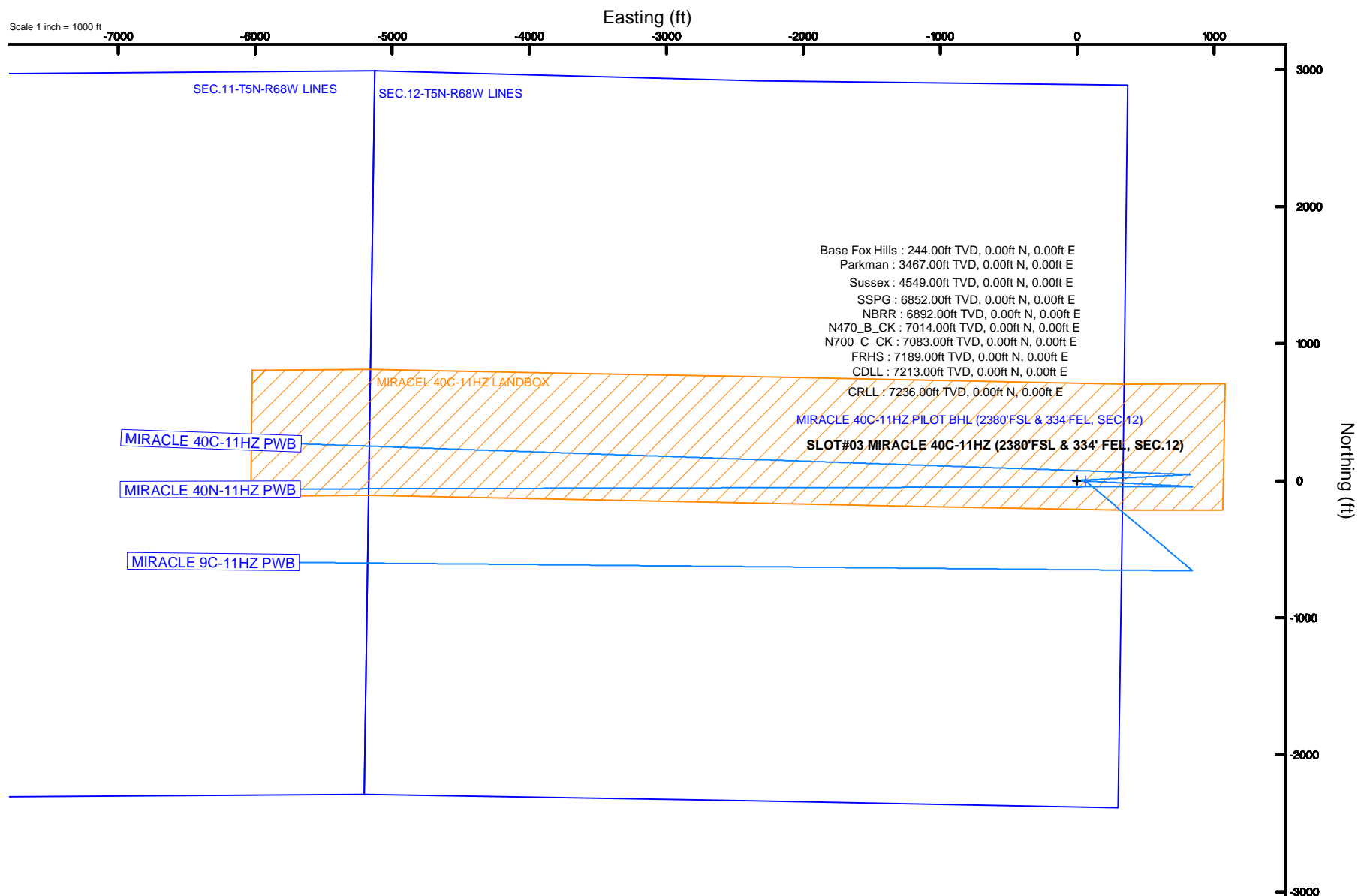




KERR-MCGEE OIL & GAS ONSHORE LP (WA)

Location: COLORADO Slot: SLOT#03 MIRACLE 40C-11HZ (2380'FSL & 334' FEL, SEC.12)
Field: WELD COUNTY (UTM/TRUE NORTH) Well: MIRACLE 40C-11HZ
Facility: SEC.12-T5N-R68W Wellbore: **MIRACLE 40C-11HZ PILOT PWB**



Planned Wellpath Report

MIRACLE 40C-11HZ PILOT (REV-A.0) PWP

Page 1 of 5

REFERENCE WELLPATH IDENTIFICATION			
Operator	KERR-MCGEE OIL & GAS ONSHORE LP (WA)	Slot	SLOT#03 MIRACLE 40C-11HZ (2380'FSL & 334' FEL, SEC.12)
Area	COLORADO	Well	MIRACLE 40C-11HZ
Field	WELD COUNTY (UTM/TRUE NORTH)	Wellbore	MIRACLE 40C-11HZ PILOT PWB
Facility	SEC.12-T5N-R68W		

REPORT SETUP INFORMATION			
Projection System	NAD83 / UTM Zone 13 North, US feet	Software System	WellArchitect® 4.1.1
North Reference	True	User	Precain
Scale	0.9996	Report Generated	6/11/2015 at 3:38:40 PM
Convergence at slot	0.04° East	Database/Source file	WellArchitectAPC/MIRACLE_40C-11HZ_PILOT_PWB.xml

WELLPATH LOCATION						
	Local coordinates		Grid coordinates		Geographic coordinates	
	North[ft]	East[ft]	Easting[US ft]	Northing[US ft]	Latitude	Longitude
Slot Location	0.91	-59.95	1655545.77	14677319.22	40°24'48.636"N	104°56'44.333"W
Facility Reference Pt			1655605.69	14677318.35	40°24'48.627"N	104°56'43.558"W
Field Reference Pt			1698235.31	14552047.82	40°04'09.600"N	104°47'36.000"W

WELLPATH DATUM			
Calculation method	Minimum curvature	XTREME 23 (16'KB) (RKB) to Facility Vertical Datum	4964.00ft
Horizontal Reference Pt	Slot	XTREME 23 (16'KB) (RKB) to Mean Sea Level	4964.00ft
Vertical Reference Pt	XTREME 23 (16'KB) (RKB)	XTREME 23 (16'KB) (RKB) to Mud Line at Slot (SLOT#03 MIRACLE 40C-11HZ (2380'FSL & 334' FEL, SEC.12))	4964.00ft
MD Reference Pt	XTREME 23 (16'KB) (RKB)	Section Origin	N 0.00, E 0.00 ft
Field Vertical Reference	Mean Sea Level	Section Azimuth	0.00°

Planned Wellpath Report

MIRACLE 40C-11HZ PILOT (REV-A.0) PWP

Page 2 of 5

REFERENCE WELLPATH IDENTIFICATION			
Operator	KERR-MCGEE OIL & GAS ONSHORE LP (WA)	Slot	SLOT#03 MIRACLE 40C-11HZ (2380'FSL & 334' FEL, SEC.12)
Area	COLORADO	Well	MIRACLE 40C-11HZ
Field	WELD COUNTY (UTM/TRUE NORTH)	Wellbore	MIRACLE 40C-11HZ PILOT PWB
Facility	SEC.12-T5N-R68W		

WELLPATH DATA (85 stations) † = interpolated/extrapolated station										
MD [ft]	Inclination [°]	Azimuth [°]	TVD [ft]	Vert Sect [ft]	North [ft]	East [ft]	Latitude	Longitude	DLS [°/100ft]	Comments
0.00†	0.000	0.000	0.00	0.00	0.00	0.00	40°24'48.636"N	104°56'44.333"W	0.00	
16.00	0.000	0.000	16.00	0.00	0.00	0.00	40°24'48.636"N	104°56'44.333"W	0.00	TIE-ON
116.00†	0.000	270.000	116.00	0.00	0.00	0.00	40°24'48.636"N	104°56'44.333"W	0.00	
216.00†	0.000	270.000	216.00	0.00	0.00	0.00	40°24'48.636"N	104°56'44.333"W	0.00	
244.00†	0.000	0.000	244.00	0.00	0.00	0.00	40°24'48.636"N	104°56'44.333"W	0.00	Base Fox Hills
316.00†	0.000	270.000	316.00	0.00	0.00	0.00	40°24'48.636"N	104°56'44.333"W	0.00	
416.00†	0.000	270.000	416.00	0.00	0.00	0.00	40°24'48.636"N	104°56'44.333"W	0.00	
516.00†	0.000	270.000	516.00	0.00	0.00	0.00	40°24'48.636"N	104°56'44.333"W	0.00	
616.00†	0.000	270.000	616.00	0.00	0.00	0.00	40°24'48.636"N	104°56'44.333"W	0.00	
716.00†	0.000	270.000	716.00	0.00	0.00	0.00	40°24'48.636"N	104°56'44.333"W	0.00	
816.00†	0.000	270.000	816.00	0.00	0.00	0.00	40°24'48.636"N	104°56'44.333"W	0.00	
916.00†	0.000	270.000	916.00	0.00	0.00	0.00	40°24'48.636"N	104°56'44.333"W	0.00	
1016.00†	0.000	270.000	1016.00	0.00	0.00	0.00	40°24'48.636"N	104°56'44.333"W	0.00	
1116.00†	0.000	270.000	1116.00	0.00	0.00	0.00	40°24'48.636"N	104°56'44.333"W	0.00	
1216.00†	0.000	270.000	1216.00	0.00	0.00	0.00	40°24'48.636"N	104°56'44.333"W	0.00	
1316.00†	0.000	270.000	1316.00	0.00	0.00	0.00	40°24'48.636"N	104°56'44.333"W	0.00	
1416.00†	0.000	270.000	1416.00	0.00	0.00	0.00	40°24'48.636"N	104°56'44.333"W	0.00	
1516.00†	0.000	270.000	1516.00	0.00	0.00	0.00	40°24'48.636"N	104°56'44.333"W	0.00	
1616.00†	0.000	270.000	1616.00	0.00	0.00	0.00	40°24'48.636"N	104°56'44.333"W	0.00	
1716.00†	0.000	270.000	1716.00	0.00	0.00	0.00	40°24'48.636"N	104°56'44.333"W	0.00	
1816.00†	0.000	270.000	1816.00	0.00	0.00	0.00	40°24'48.636"N	104°56'44.333"W	0.00	
1916.00†	0.000	270.000	1916.00	0.00	0.00	0.00	40°24'48.636"N	104°56'44.333"W	0.00	
2016.00†	0.000	270.000	2016.00	0.00	0.00	0.00	40°24'48.636"N	104°56'44.333"W	0.00	
2116.00†	0.000	270.000	2116.00	0.00	0.00	0.00	40°24'48.636"N	104°56'44.333"W	0.00	
2216.00†	0.000	270.000	2216.00	0.00	0.00	0.00	40°24'48.636"N	104°56'44.333"W	0.00	
2316.00†	0.000	270.000	2316.00	0.00	0.00	0.00	40°24'48.636"N	104°56'44.333"W	0.00	
2416.00†	0.000	270.000	2416.00	0.00	0.00	0.00	40°24'48.636"N	104°56'44.333"W	0.00	
2516.00†	0.000	270.000	2516.00	0.00	0.00	0.00	40°24'48.636"N	104°56'44.333"W	0.00	
2616.00†	0.000	270.000	2616.00	0.00	0.00	0.00	40°24'48.636"N	104°56'44.333"W	0.00	
2716.00†	0.000	270.000	2716.00	0.00	0.00	0.00	40°24'48.636"N	104°56'44.333"W	0.00	
2816.00†	0.000	270.000	2816.00	0.00	0.00	0.00	40°24'48.636"N	104°56'44.333"W	0.00	
2916.00†	0.000	270.000	2916.00	0.00	0.00	0.00	40°24'48.636"N	104°56'44.333"W	0.00	
3016.00†	0.000	270.000	3016.00	0.00	0.00	0.00	40°24'48.636"N	104°56'44.333"W	0.00	
3116.00†	0.000	270.000	3116.00	0.00	0.00	0.00	40°24'48.636"N	104°56'44.333"W	0.00	
3216.00†	0.000	270.000	3216.00	0.00	0.00	0.00	40°24'48.636"N	104°56'44.333"W	0.00	
3316.00†	0.000	270.000	3316.00	0.00	0.00	0.00	40°24'48.636"N	104°56'44.333"W	0.00	
3416.00†	0.000	270.000	3416.00	0.00	0.00	0.00	40°24'48.636"N	104°56'44.333"W	0.00	
3467.00†	0.000	0.000	3467.00	0.00	0.00	0.00	40°24'48.636"N	104°56'44.333"W	0.00	Parkman
3516.00†	0.000	270.000	3516.00	0.00	0.00	0.00	40°24'48.636"N	104°56'44.333"W	0.00	
3616.00†	0.000	270.000	3616.00	0.00	0.00	0.00	40°24'48.636"N	104°56'44.333"W	0.00	
3716.00†	0.000	270.000	3716.00	0.00	0.00	0.00	40°24'48.636"N	104°56'44.333"W	0.00	
3816.00†	0.000	270.000	3816.00	0.00	0.00	0.00	40°24'48.636"N	104°56'44.333"W	0.00	
3916.00†	0.000	270.000	3916.00	0.00	0.00	0.00	40°24'48.636"N	104°56'44.333"W	0.00	
4016.00†	0.000	270.000	4016.00	0.00	0.00	0.00	40°24'48.636"N	104°56'44.333"W	0.00	
4116.00†	0.000	270.000	4116.00	0.00	0.00	0.00	40°24'48.636"N	104°56'44.333"W	0.00	

REFERENCE WELLPATH IDENTIFICATION			
Operator	KERR-MCGEE OIL & GAS ONSHORE LP (WA)	Slot	SLOT#03 MIRACLE 40C-11HZ (2380'FSL & 334' FEL, SEC.12)
Area	COLORADO	Well	MIRACLE 40C-11HZ
Field	WELD COUNTY (UTM/TRUE NORTH)	Wellbore	MIRACLE 40C-11HZ PILOT PWB
Facility	SEC.12-T5N-R68W		

WELLPATH DATA (85 stations) † = interpolated/extrapolated station										
MD [ft]	Inclination [°]	Azimuth [°]	TVD [ft]	Vert Sect [ft]	North [ft]	East [ft]	Latitude	Longitude	DLS [°/100ft]	Comments
4216.00†	0.000	270.000	4216.00	0.00	0.00	0.00	40°24'48.636"N	104°56'44.333"W	0.00	
4316.00†	0.000	270.000	4316.00	0.00	0.00	0.00	40°24'48.636"N	104°56'44.333"W	0.00	
4416.00†	0.000	270.000	4416.00	0.00	0.00	0.00	40°24'48.636"N	104°56'44.333"W	0.00	
4516.00†	0.000	270.000	4516.00	0.00	0.00	0.00	40°24'48.636"N	104°56'44.333"W	0.00	
4549.00†	0.000	0.000	4549.00	0.00	0.00	0.00	40°24'48.636"N	104°56'44.333"W	0.00	Sussex
4616.00†	0.000	270.000	4616.00	0.00	0.00	0.00	40°24'48.636"N	104°56'44.333"W	0.00	
4716.00†	0.000	270.000	4716.00	0.00	0.00	0.00	40°24'48.636"N	104°56'44.333"W	0.00	
4816.00†	0.000	270.000	4816.00	0.00	0.00	0.00	40°24'48.636"N	104°56'44.333"W	0.00	
4916.00†	0.000	270.000	4916.00	0.00	0.00	0.00	40°24'48.636"N	104°56'44.333"W	0.00	
5016.00†	0.000	270.000	5016.00	0.00	0.00	0.00	40°24'48.636"N	104°56'44.333"W	0.00	
5116.00†	0.000	270.000	5116.00	0.00	0.00	0.00	40°24'48.636"N	104°56'44.333"W	0.00	
5216.00†	0.000	270.000	5216.00	0.00	0.00	0.00	40°24'48.636"N	104°56'44.333"W	0.00	
5316.00†	0.000	270.000	5316.00	0.00	0.00	0.00	40°24'48.636"N	104°56'44.333"W	0.00	
5416.00†	0.000	270.000	5416.00	0.00	0.00	0.00	40°24'48.636"N	104°56'44.333"W	0.00	
5516.00†	0.000	270.000	5516.00	0.00	0.00	0.00	40°24'48.636"N	104°56'44.333"W	0.00	
5616.00†	0.000	270.000	5616.00	0.00	0.00	0.00	40°24'48.636"N	104°56'44.333"W	0.00	
5716.00†	0.000	270.000	5716.00	0.00	0.00	0.00	40°24'48.636"N	104°56'44.333"W	0.00	
5816.00†	0.000	270.000	5816.00	0.00	0.00	0.00	40°24'48.636"N	104°56'44.333"W	0.00	
5916.00†	0.000	270.000	5916.00	0.00	0.00	0.00	40°24'48.636"N	104°56'44.333"W	0.00	
6016.00†	0.000	270.000	6016.00	0.00	0.00	0.00	40°24'48.636"N	104°56'44.333"W	0.00	
6116.00†	0.000	270.000	6116.00	0.00	0.00	0.00	40°24'48.636"N	104°56'44.333"W	0.00	
6216.00†	0.000	270.000	6216.00	0.00	0.00	0.00	40°24'48.636"N	104°56'44.333"W	0.00	
6316.00†	0.000	270.000	6316.00	0.00	0.00	0.00	40°24'48.636"N	104°56'44.333"W	0.00	
6416.00†	0.000	270.000	6416.00	0.00	0.00	0.00	40°24'48.636"N	104°56'44.333"W	0.00	
6516.00†	0.000	270.000	6516.00	0.00	0.00	0.00	40°24'48.636"N	104°56'44.333"W	0.00	
6616.00†	0.000	270.000	6616.00	0.00	0.00	0.00	40°24'48.636"N	104°56'44.333"W	0.00	
6716.00†	0.000	270.000	6716.00	0.00	0.00	0.00	40°24'48.636"N	104°56'44.333"W	0.00	
6816.00†	0.000	270.000	6816.00	0.00	0.00	0.00	40°24'48.636"N	104°56'44.333"W	0.00	
6852.00†	0.000	0.000	6852.00	0.00	0.00	0.00	40°24'48.636"N	104°56'44.333"W	0.00	SSPG
6892.00†	0.000	0.000	6892.00	0.00	0.00	0.00	40°24'48.636"N	104°56'44.333"W	0.00	NBRR
6916.00†	0.000	270.000	6916.00	0.00	0.00	0.00	40°24'48.636"N	104°56'44.333"W	0.00	
7014.00†	0.000	0.000	7014.00	0.00	0.00	0.00	40°24'48.636"N	104°56'44.333"W	0.00	N470_B_CK
7016.00†	0.000	270.000	7016.00	0.00	0.00	0.00	40°24'48.636"N	104°56'44.333"W	0.00	
7083.00†	0.000	0.000	7083.00	0.00	0.00	0.00	40°24'48.636"N	104°56'44.333"W	0.00	N700_C_CK
7116.00†	0.000	270.000	7116.00	0.00	0.00	0.00	40°24'48.636"N	104°56'44.333"W	0.00	
7189.00†	0.000	0.000	7189.00	0.00	0.00	0.00	40°24'48.636"N	104°56'44.333"W	0.00	FRHS
7213.00†	0.000	0.000	7213.00	0.00	0.00	0.00	40°24'48.636"N	104°56'44.333"W	0.00	CDLL
7216.00†	0.000	270.000	7216.00	0.00	0.00	0.00	40°24'48.636"N	104°56'44.333"W	0.00	
7236.00†	0.000	0.000	7236.00	0.00	0.00	0.00	40°24'48.636"N	104°56'44.333"W	0.00	CRL
7314.00	0.000	0.000	7314.00†	0.00	0.00	0.00	40°24'48.636"N	104°56'44.333"W	0.00	TOTAL DEPTH

HOLE & CASING SECTIONS										
- Ref Wellbore: MIRACLE 40C-11HZ PILOT PWB					Ref Wellpath: MIRACLE 40C-11HZ PILOT (REV-A.0) PWP					
String/Diameter	Start MD [ft]	End MD [ft]	Interval [ft]	Start TVD [ft]	End TVD [ft]	Start N/S [ft]	Start E/W [ft]	End N/S [ft]	End E/W [ft]	
8.75in Open Hole	16.00	7314.00	7298.00	16.00	7314.00	0.00	0.00	0.00	0.00	

REFERENCE WELLPATH IDENTIFICATION			
Operator	KERR-MCGEE OIL & GAS ONSHORE LP (WA)	Slot	SLOT#03 MIRACLE 40C-11HZ (2380'FSL & 334' FEL, SEC.12)
Area	COLORADO	Well	MIRACLE 40C-11HZ
Field	WELD COUNTY (UTM/TRUE NORTH)	Wellbore	MIRACLE 40C-11HZ PILOT PWB
Facility	SEC.12-T5N-R68W		

TARGETS									
Name	MD [ft]	TVD [ft]	North [ft]	East [ft]	Grid East [US ft]	Grid North [US ft]	Latitude	Longitude	Shape
SEC.11-T5N-R68W LINES		0.00	-1.11	59.87	1655605.61	14677318.14	40°24'48.625"N	104°56'43.559"W	polygon
SEC.12-T5N-R68W LINES		0.00	-1.11	59.87	1655605.61	14677318.14	40°24'48.625"N	104°56'43.559"W	polygon
1) MIRACLE 40C-11HZ PILOT BHL	7314.00	7314.00	0.00	0.00	1655545.77	14677319.22	40°24'48.636"N	104°56'44.333"W	point

SURVEY PROGRAM -				
Ref Wellbore: MIRACLE 40C-11HZ PILOT PWB		Ref Wellpath: MIRACLE 40C-11HZ PILOT (REV-A.0) PWP		
Start MD [ft]	End MD [ft]	Positional Uncertainty Model	Log Name/Comment	Wellbore
16.00	7314.00	Custom APC_ISCWSA REV 2 MWD+IFR1 (approximation)		MIRACLE 40C-11HZ PILOT PWB

REFERENCE WELLPATH IDENTIFICATION			
Operator	KERR-MCGEE OIL & GAS ONSHORE LP (WA)	Slot	SLOT#03 MIRACLE 40C-11HZ (2380'FSL & 334' FEL, SEC.12)
Area	COLORADO	Well	MIRACLE 40C-11HZ
Field	WELD COUNTY (UTM/TRUE NORTH)	Wellbore	MIRACLE 40C-11HZ PILOT PWB
Facility	SEC.12-T5N-R68W		

WELLPATH COMMENTS				
MD [ft]	Inclination [°]	Azimuth [°]	TVD [ft]	Comment
244.00	0.000	0.000	244.00	Base Fox Hills
3467.00	0.000	0.000	3467.00	Parkman
4549.00	0.000	0.000	4549.00	Sussex
6852.00	0.000	0.000	6852.00	SSPG
6892.00	0.000	0.000	6892.00	NBRR
7014.00	0.000	0.000	7014.00	N470_B_CK
7083.00	0.000	0.000	7083.00	N700_C_CK
7189.00	0.000	0.000	7189.00	FRHS
7213.00	0.000	0.000	7213.00	CDLL
7236.00	0.000	0.000	7236.00	CRL

DESIGN COMMENTS				
MD [ft]	Inclination [°]	Azimuth [°]	TVD [ft]	Comment
16.00	0.000	0.000	16.00	TIE-ON
7314.00	0.000	0.000	7314.00	TOTAL DEPTH