

# HALLIBURTON

iCem<sup>®</sup> Service

## **CATAMOUNT ENERGY PARTNERS LLC**

**For: DALE ARNOLD**

Date: Friday, April 03, 2015

### **CARPENTER 32-6-3 #1S**

CARPENTER 32-6-3 #1S

Case 1

Job Date: Friday, April 03, 2015

Sincerely,

**RICKEY JOHNSON**

*cost posted*

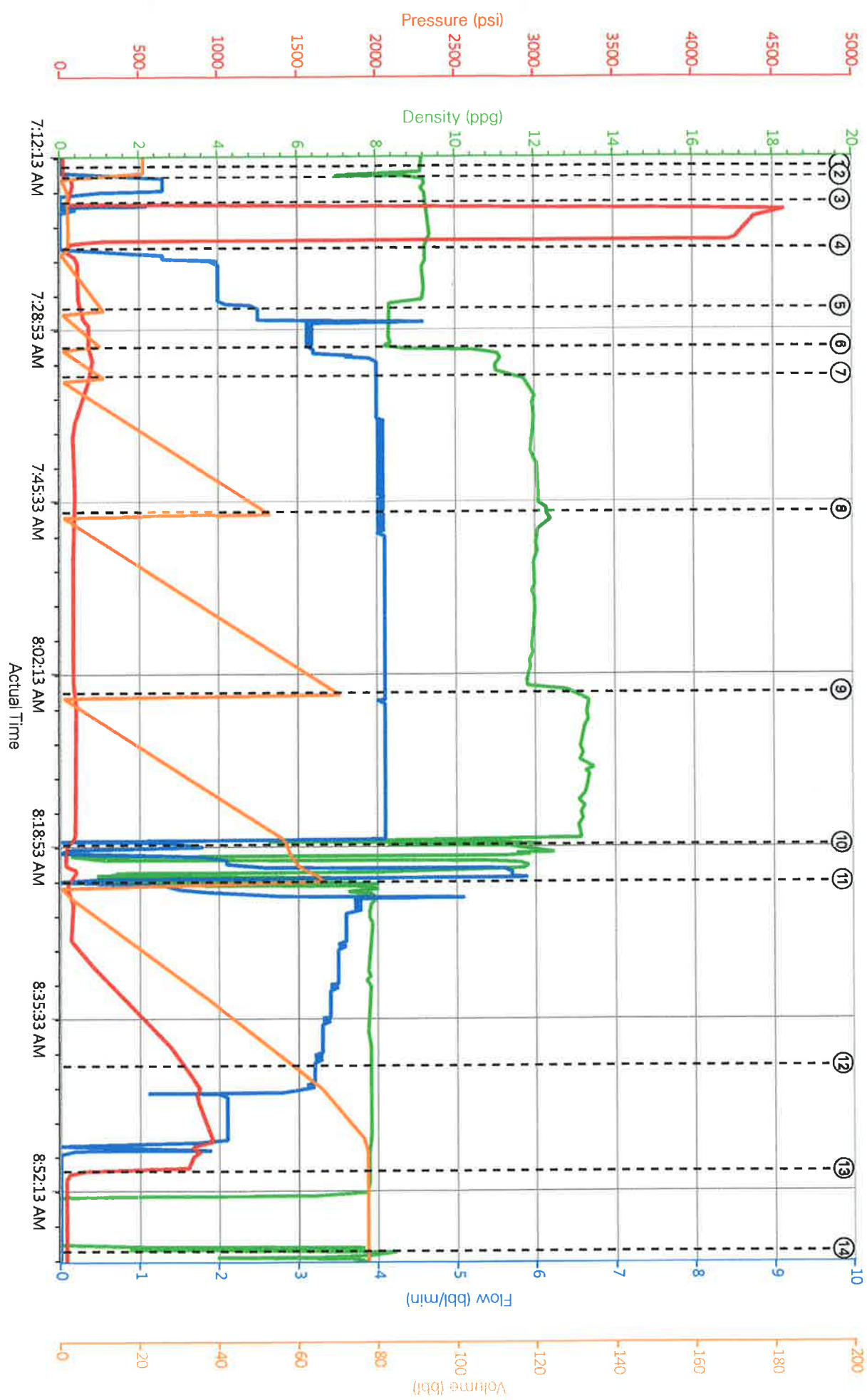
## 1.0 Real-Time Job Summary

### 1.1 Job Event Log

Type	Seq. No.	Activity	Graph Label	Date	Time	Source	DH Density (bpg)	PS Pump Rate (bbl/min)	PS Pump Press (psi)	Pump Skg Tot (bbl)	Comments
Event	1	Start Job	Start Job	4/3/2015	07:13:24	COM4	9.12	0.00	17.00	21.0	
Event	2	Pump Water	Pump Water	4/3/2015	07:14:26	USER	9.24	1.30	78.00	0.6	PUMPED 2 BBLS FRESH WATER TO LOAD LINES FOR PRESSURE TEST
Event	3	Test Lines	Test Lines	4/3/2015	07:16:51	COM4	9.23	0.00	46.00	2.0	PRESSURE TESTED LINES TO 4500 PSI
Event	4	Pump Spacer 1	Pump Spacer 1	4/3/2015	07:21:18	COM4	9.19	0.00	36.00	2.1	PUMPED 10 BBLS FRESH WATER
Event	5	Pump Spacer 1	Pump Spacer 2	4/3/2015	07:27:09	COM4	8.27	2.50	139.00	11.1	PUMPED 10 BBLS CHEM WASH
Event	6	Pump Cement	Pump Scavenger Cement	4/3/2015	07:30:54	COM4	10.50	3.20	180.00	0.8	PUMPED 11.5 BBLS SCAVENGER CMT @ 11.3#, 3.25 YIELD, 19.81 GAL/SK, 20 SKS
Event	7	Pump Lead Cement	Pump Lead Cement #1	4/3/2015	07:33:42	COM4	11.74	4.00	179.00	11.5	PUMPED 45.5 BBLS 1ST LEAD CMT @ 12.3#, 2.43 YIELD, 13.69 GAL/SK, 105 SKS
Event	8	Pump Lead Cement	Pump Lead Cement #2	4/3/2015	07:46:52	COM4	12.33	4.10	91.00	53.2	PUMPED 47.8 BBLS 2ND LEAD CMT @ 12.3#, 2.44 YIELD, 13.72 GAL/SK, 110 SKS
Event	9	Pump Tail Cement	Pump Tail Cement	4/3/2015	08:04:19	COM4	13.14	4.10	97.00	70.9	PUMPED 44.7 BBLS TAIL CMT @ 13.5#, 1.86 YIELD, 9.41 GAL/SK, 135 SKS
Event	10	Pump Water	Pump Water	4/3/2015	08:19:01	USER	11.80	1.70	38.00	57.7	PUMPED 10 BBLS FRESH WATER TO PIT TO WASH PUMPS AND LINES

Event	11	Pump Displacement	Pump Displacement	4/3/2015	08:22:37	COM4	5.72	1.30	43.00	0.0	PUMPED 77.5 BBLs FRESH WATER DISPLACEMENT
Event	12	Cement Returns to Surface	Bump Plug	4/3/2015	08:40:25	USER	7.88	3.20	792.00	59.7	GOT 17 BBLs GOOD CMT TO SURFACE
Event	13	Check Floats	Check Floats	4/3/2015	08:50:37	USER	7.79	0.00	53.00	77.4	CHECKED FLOATS, THEY HELD GOT 1/4 BBL BACK
Event	14	End Job	End Job	4/3/2015	08:58:22	USER	7.77	0.00	49.00	77.4	

CARPENTER 32-6-3 #1S

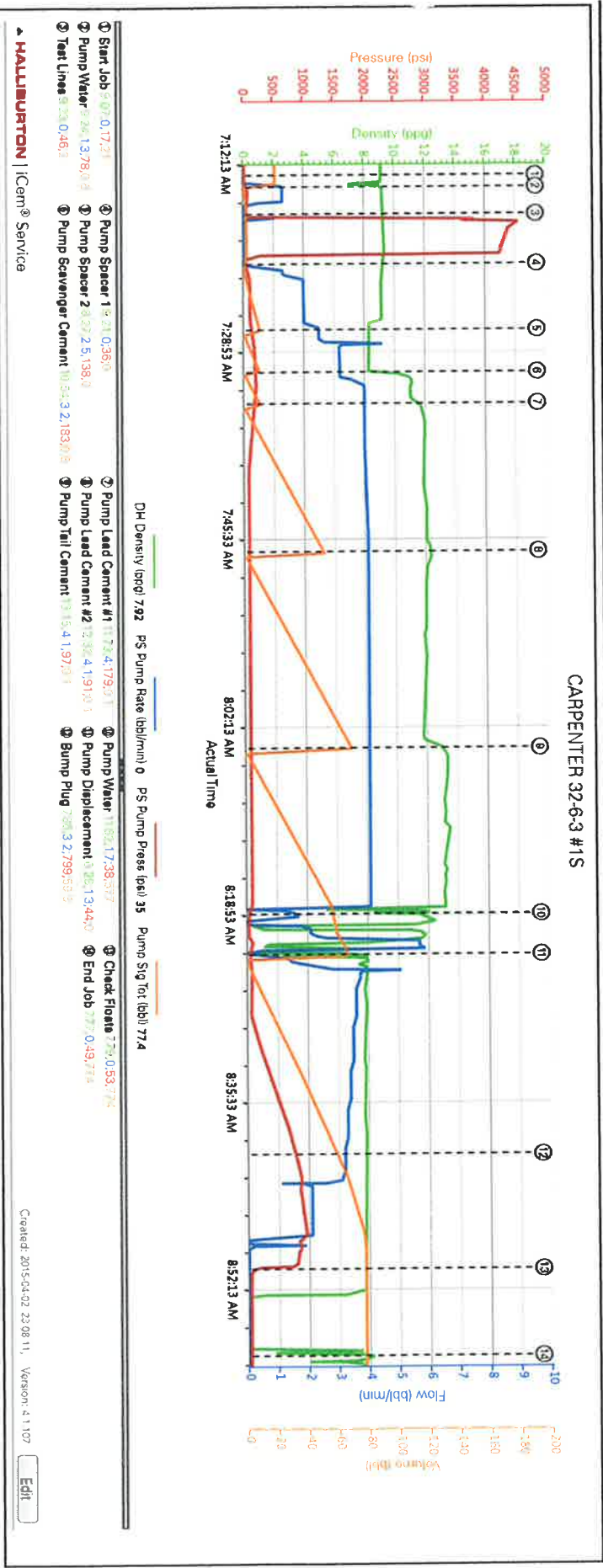


DH Density (ppg) 7.92 PS Pump Rate (bbt/min) 0 PS Pump Press (psi) 35 Pump Stg Tot (bbt) 77.4

- ① Start Job 9:07:0;17:21
  - ② Pump Water 9:24:1;3:78;0.6
  - ③ Test Lines 9:23:0;46;2
  - ④ Pump Spacer 1 9:21:0;36;0
  - ⑤ Pump Spacer 2 8:27:2;5;138;0
  - ⑥ Pump Scavenger Cement 10:54;3;2;183;0.8
  - ⑦ Pump Lead Cement #1 11:73;4;179;0.1
  - ⑧ Pump Lead Cement #2 12:32;4;1;91;0.1
  - ⑨ Pump Tail Cement 13;15;4;1;97;0.1
  - ⑩ Pump Water 11:82;1;7;38;57.7
  - ⑪ Pump Displacement 6:28;1;3;44;0
  - ⑫ Bump Plug 7:86;3;2;799;59.8
  - ⑬ Check Floats 7:79;0;53;77.4
  - ⑭ End Job 7:77;0;49;77.4
- ▶ HALLIBURTON | iCem® Service
- Created: 2015-04-02 23:08:11, Version: 4.1.107
- Edit

2.0 Attachments

2.1 CATAMOUNT.png



## The Road to Excellence Starts with Safety

Sold To #: 367830	Ship To #: 3657917	Quote #: 0022004054	Sales Order #: 0902295441
Customer: CATAMOUNT ENERGY PARTNERS LLC-EBUS	Customer Rep: DALE ARNOLD		
Well Name: CARPENTER 32-6-3	Well #: 1S	API/UWI #: 05-067-09918-04	
Field: IGNACIO-BLANCO	City (SAP): IGNACIO	County/Parish: LA PLATA	State: COLORADO
Legal Description: NW SE-3-32N-6W-2386FSL-1763FEL			
Contractor: D & J DRLG	Rig/Platform Name/Num: D & J 1		
Job BOM: 7523			
Well Type: COAL DE-GAS			
Sales Person: HALAMERICA\HB50180	Srvc Supervisor: Rickey Johnson		
Job			

Formation Name			
Formation Depth (MD)	Top		Bottom
Form Type			BHST
Job depth MD	3382ft		Job Depth TVD
Water Depth			Wk Ht Above Floor
Perforation Depth (MD)	From		To

### Well Data

Description	New / Used	Size in	ID in	Weight lbm/ft	Thread	Grade	Top MD ft	Bottom MD ft	Top TVD ft	Bottom TVD ft
Casing		8.625	8.097	24	8 RD	H-40	0	419		
Casing		5.5	4.892	17	8 RD	J-55	419	3382	0	0
Open Hole Section			7.875				419	3392	0	0
Open Hole Section			7.875				419	3392		0

### Tools and Accessories

Type	Size in	Qty	Make	Depth ft	Type	Size in	Qty	Make
Guide Shoe	5.5			3382	Top Plug	5.5		HES
Float Shoe	5.5				Bottom Plug	5.5		HES
Float Collar	5.5				SSR plug set	5.5		HES
Insert Float	5.5				Plug Container	5.5		HES
Stage Tool	5.5				Centralizers	5.5		HES

### Miscellaneous Materials

Gelling Agt	Conc	Surfactant	Conc	Acid Type	Qty	Conc
Treatment Fld	Conc	Inhibitor	Conc	Sand Type	Size	Qty

### Fluid Data

Stage/Plug #: 1									
Fluid #	Stage Type	Fluid Name	Qty	Qty UoM	Mixing Density lbm/gal	Yield ft <sup>3</sup> /sack	Mix Fluid Gal	Rate bbl/min	Total Mix Fluid Gal
1	Chemical Wash	Chemical Wash	10	bbl	8.35				
1000 gal/Mgal		FRESH WATER							



Fluid #	Stage Type	Fluid Name	Qty	Qty UoM	Mixing Density lbm/gal	Yield ft3/sack	Mix Fluid Gal	Rate bbl/min	Total Mix Fluid Gal
2	PRB Lead Scavenger	HALCEM (TM) SYSTEM	20	sack	11.3	3.25		5	19.81
0.40 %		FE-2 (100001615)							
19.81 Gal		FRESH WATER							
5 lbm		KOL-SEAL, BULK (100064233)							
0.1250 lbm		POLY-E-FLAKE (101216940)							
Fluid #	Stage Type	Fluid Name	Qty	Qty UoM	Mixing Density lbm/gal	Yield ft3/sack	Mix Fluid Gal	Rate bbl/min	Total Mix Fluid Gal
3	PRB Lead #1	HALCEM (TM) SYSTEM	105	sack	12.3	2.43		5	13.69
0.40 %		FE-2 (100001615)							
13.69 Gal		FRESH WATER							
5 lbm		KOL-SEAL, BULK (100064233)							
0.1250 lbm		POLY-E-FLAKE (101216940)							
Fluid #	Stage Type	Fluid Name	Qty	Qty UoM	Mixing Density lbm/gal	Yield ft3/sack	Mix Fluid Gal	Rate bbl/min	Total Mix Fluid Gal
4	PRB Lead #2	HALCEM (TM) SYSTEM	110	sack	12.3	2.44		5	13.72
13.72 Gal		FRESH WATER							
0.1250 lbm		POLY-E-FLAKE (101216940)							
5 lbm		KOL-SEAL, BULK (100064233)							
0.30 %		SUPER CBL, 50 LB PAIL (100003668)							
0.40 %		FE-2 (100001615)							
Fluid #	Stage Type	Fluid Name	Qty	Qty UoM	Mixing Density lbm/gal	Yield ft3/sack	Mix Fluid Gal	Rate bbl/min	Total Mix Fluid Gal
5	PRB Tail	HALCEM (TM) SYSTEM	135	sack	13.5	1.86		5	9.41
0.1250 lbm		POLY-E-FLAKE (101216940)							
5 lbm		KOL-SEAL, BULK (100064233)							
9.41 Gal		FRESH WATER							
0.40 %		FE-2 (100001615)							
Fluid #	Stage Type	Fluid Name	Qty	Qty UoM	Mixing Density lbm/gal	Yield ft3/sack	Mix Fluid Gal	Rate bbl/min	Total Mix Fluid Gal
6	Displacement Mud		77.4	bbl	11				
Cement Left In Pipe			Amount	45 ft	Reason			Shoe Joint	

Mix Water: pH ##	Mix Water Chloride: ## ppm	Mix Water Temperature: ## °F °C
Cement Temperature: ## °F °C	Plug Displaced by: ## lb/gal kg/m3 XXXX	Disp. Temperature: ## °F °C
Plug Bumped? Yes/No	Bump Pressure: ##### psi MPa	Floats Held? Yes/No
Cement Returns: ## bbl m3	Returns Density: ## lb/gal kg/m3	Returns Temperature: ## °F °C
Comment		