

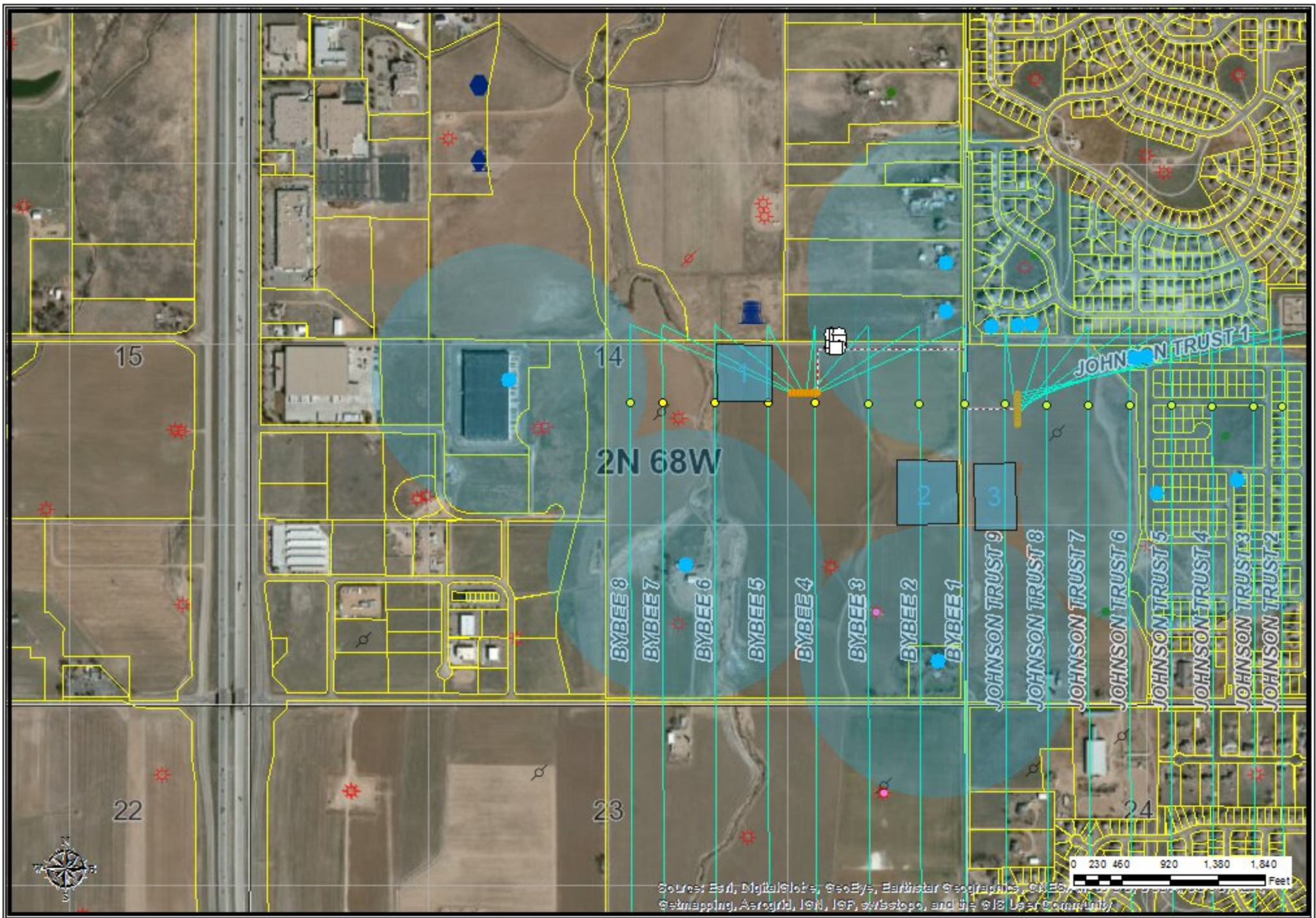
## **Options Explored By Extraction**

**Options 1 & 2:** Facilities cannot be combined with nearby proposed Bybee pad as these sites involve different SOs, neither of which is open to this idea.

**Option 3:** Facilities cannot be moved south due to agreement with SO, as SO has future plans for residential development in this area.

Extraction believes that any other location for the facilities would present an economic burden to have to run pipelines over a quarter-mile away.

\*Please see map below showing additional options.



## Extraction Oil & Gas

Author:

Printed: February 19, 2015

Description: Printed for Extraction Oil & Gas

### Legend

- |  |          |  |               |  |                |  |                     |
|--|----------|--|---------------|--|----------------|--|---------------------|
|  | Existing |  | COGCC         |  | Kick off Point |  | Bore Path           |
|  | Proposed |  | Landing Point |  | Bottom Hole    |  | Bore Lines (1:150K) |

