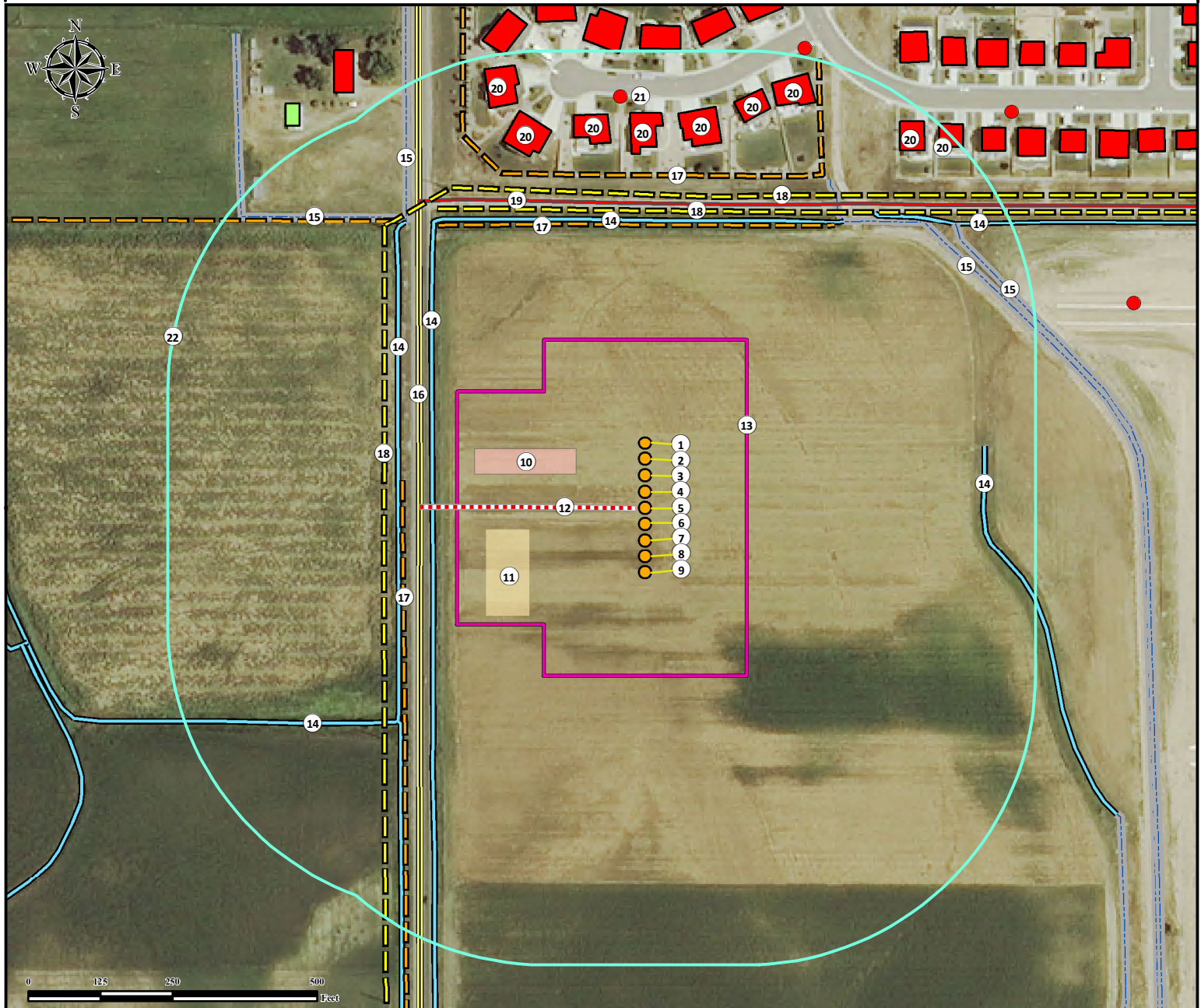


Location Drawing

JOHNSON TRUST 13-I PAD

MULTI WELL PAD

NW1/4 SW1/4 SECTION 13, TOWNSHIP 2 NORTH, RANGE 68 WEST OF THE 6TH PRINCIPAL MERIDIAN



1. Proposed Well JOHNSON TRUST 1.
2. Proposed Well JOHNSON TRUST 2.
3. Proposed Well JOHNSON TRUST 3.
4. Proposed Well JOHNSON TRUST 4.
5. Proposed Well JOHNSON TRUST 5.
6. Proposed Well JOHNSON TRUST 6.
7. Proposed Well JOHNSON TRUST 7.
8. Proposed Well JOHNSON TRUST 8.
9. Proposed Well JOHNSON TRUST 9.
10. Proposed Separator Pad is ±132' NW.
11. Proposed Tank Battery is ±203' SW.

12. Proposed Access Road.
13. Operational Disturbance Area.
14. Ditches are ±367' W, ±426' W, ±499' N, ±564' SW, ±584' E, and ±647' NE.
15. Concrete Ditches are ±603' NE, ±641' NW, ±647' NW, and ±715' NE.
16. Public Road (CR 11) is ±389' W.
17. Fences are ±419' W, ±489' N, and ±576' N.
18. Powerlines are ±451' W, ±515' N, and ±542' N.
19. Private Road is ±528' N.
20. Building Units are ±612' N, ±630' NE, ±688' NE, ±731' NE, ±758' NE, ±805' NE, ±634' NW, ±640' NW, and ±735' NW.
21. Fire Hydrant is ±712' N.
22. 500' Radius.

Legend			Measured from Nearest Well or Facility Edge		Reference Location
Yellow Circle	Proposed Well	Private Road	Building -	±500' N	
Red Dot	Fire Hydrant	Ditch	Building Unit -	±500' N	** JOHNSON TRUST 5 ** Lat: 40.137339° Long: -104.959620° (NAD83) Elevation: 4925 Feet
		Proposed Access Road	Surface Water (Ditch) -	±73' W	
		Public Road	Measured from Reference Location		Disturbance Acreage:
		Powerline	Public Road - (CR 11)	±389' W	6.04 Acres Drilling Operations
		Fence	Prop. Line (Weld County)	±388' W	3.02 Acres Interim Reclaim
		Concrete Ditch	Utility (Power Line) -	±451' W	Current Surface Use: Irrigated Crop
			Railroad -	>5280' NE	Future Surface Use: Irrigated Crop
			Water Well - ±1571' NW	SWL = 0'	Prepared for: EXTRACTION
			Permit: 90267,	Receipt: 0080172	
			Water Well - ±2821' SW	SWL = 11'	
			Permit: 635,	Receipt: 9058540	