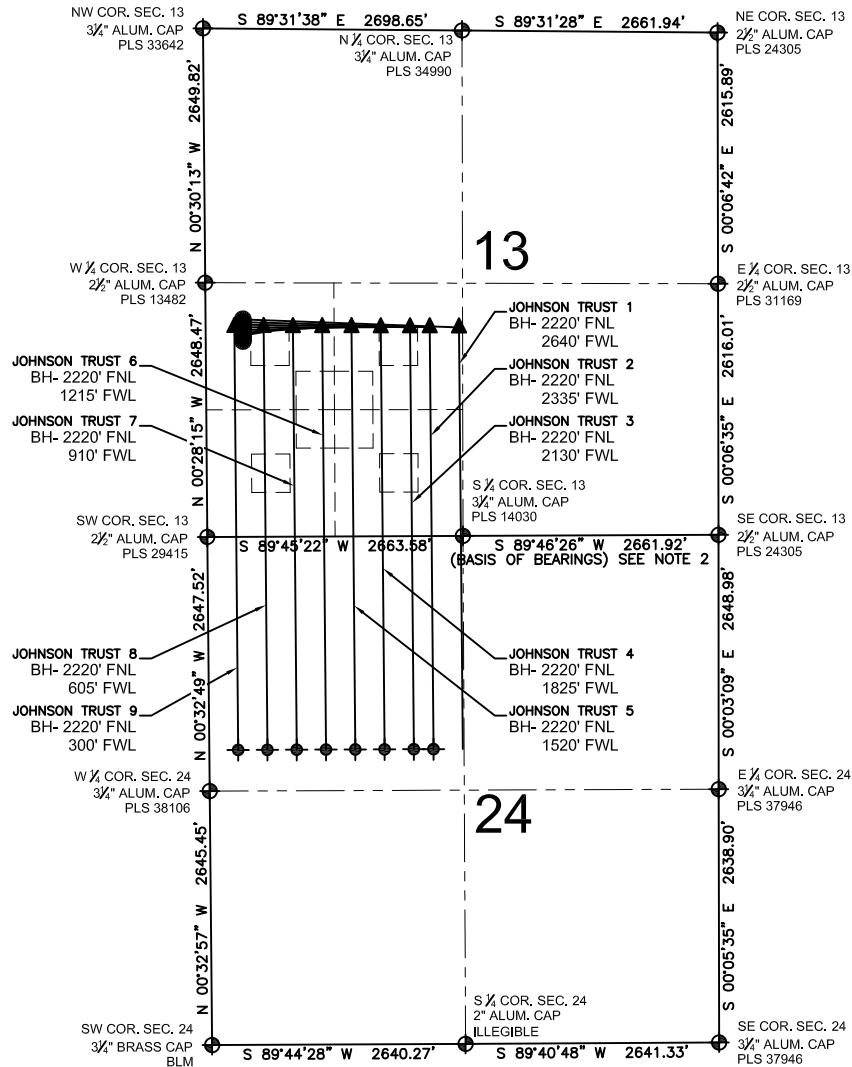


# JOHNSON TRUST 13-I MULTI-WELL PLAN

SECTION 13, TOWNSHIP 2 NORTH, RANGE 68 WEST, 6TH P.M.



## LEGEND

- ⊕ = EXISTING MONUMENT    ○ = CALCULATED POINT  
 ● = PROPOSED WELL    ▲ = LANDING POINT  
 ◆ = EXISTING WELL    LP = LANDING POINT  
 ⬥ = BOTTOM HOLE    BH = BOTTOM HOLE

## NOTES:

- THIS FIELD SURVEY CONFORMS TO THE MINIMUM STANDARDS SET BY THE C.O.G.C., RULE NO. 215
- BEARINGS AND DISTANCE SHOWN HEREON ARE GRID AND BASED ON THE COLORADO STATE PLANE COORDINATE SYSTEM, NAD 83/2011 BETWEEN MONUMENTS AS LABELED HEREON AND ELEVATIONS SHOWN ARE NAVD 88, AS DERIVED BY GPS OBSERVATIONS.
- GRID DISTANCES ARE SHOWN, AS MEASURED IN THE FIELD, WITH TIES TO WELLS MEASURED PERPENDICULAR TO SECTION LINES.

## NOTES:

JOHNSON TRUST 1 TO BE AT 2265' FSL, 389' FWL.  
 BOTTOM HOLE AT 2220' FNL & 2640' FWL, SEC. 24  
 JOHNSON TRUST 2 TO BE AT 2237' FSL, 389' FWL.  
 BOTTOM HOLE AT 2220' FNL & 2335' FWL, SEC. 24  
 JOHNSON TRUST 3 TO BE AT 2209' FSL, 389' FWL.  
 BOTTOM HOLE AT 2220' FNL & 2130' FWL, SEC. 24  
 JOHNSON TRUST 4 TO BE AT 2181' FSL, 389' FWL.  
 BOTTOM HOLE AT 2220' FNL & 1825' FWL, SEC. 24  
 JOHNSON TRUST 5 TO BE AT 2153' FSL, 389' FWL.  
 BOTTOM HOLE AT 2220' FNL & 1520' FWL, SEC. 24  
 JOHNSON TRUST 6 TO BE AT 2125' FSL, 388' FWL.  
 BOTTOM HOLE AT 2220' FNL & 1215' FWL, SEC. 24  
 JOHNSON TRUST 7 TO BE AT 2097' FSL, 388' FWL.  
 BOTTOM HOLE AT 2220' FNL & 910' FWL, SEC. 24  
 JOHNSON TRUST 8 TO BE AT 2069' FSL, 388' FWL.  
 BOTTOM HOLE AT 2220' FNL & 605' FWL, SEC. 24  
 JOHNSON TRUST 9 TO BE AT 2041' FSL, 388' FWL.  
 BOTTOM HOLE AT 2220' FNL & 300' FWL, SEC. 24

PREPARED BY:



## EXTRACTION OIL & GAS

FIELD DATE: 07-12-14	PAD NAME: JOHNSON TRUST 13-I
DRAWING DATE: 07-22-14	SURFACE LOCATION: NW 1/4 SW 1/4, SEC. 13, T2N, R68W, 6TH P.M.
BY: MDC	CHECKED: WDW
	WELD COUNTY, COLORADO

