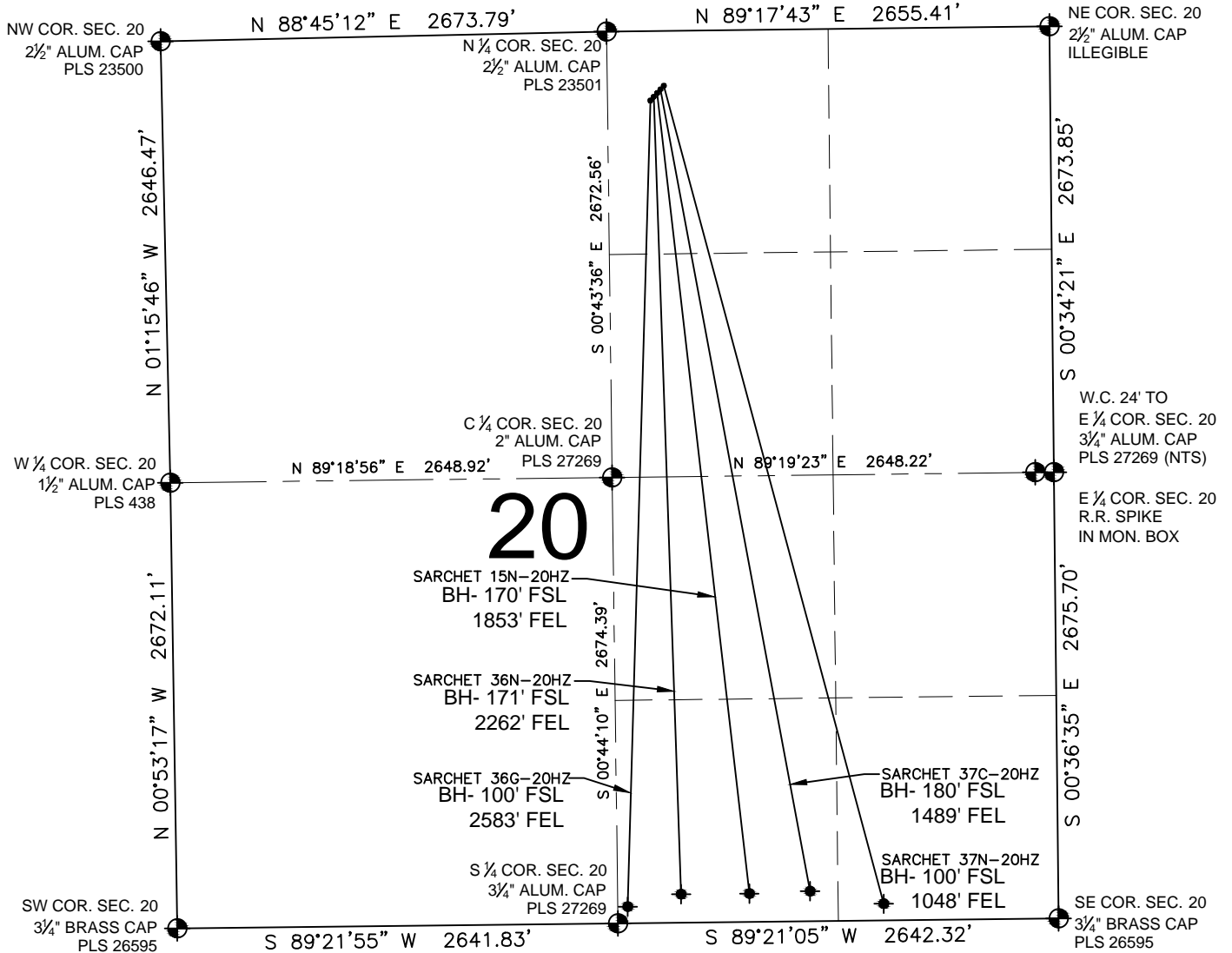


SARCHET 15N-20HZ MULTI-WELL PLAN

SECTION 20, TOWNSHIP 2 NORTH, RANGE 65 WEST, 6TH P.M.



NOTES:

SARCHET 36G-20HZ TO BE AT 416' FNL, 2397' FEL.
 BOTTOM HOLE AT 100' FSL & 2583' FEL.
 SARCHET 36N-20HZ TO BE AT 394' FNL, 2377' FEL.
 BOTTOM HOLE AT 171' FSL & 2262' FEL.
 SARCHET 15N-20HZ TO BE AT 372' FNL, 2356' FEL.
 BOTTOM HOLE AT 170' FSL & 1853' FEL.
 SARCHET 37C-20HZ TO BE AT 350' FNL, 2336' FEL.
 BOTTOM HOLE AT 180' FSL & 1489' FEL.
 SARCHET 37N-20HZ TO BE AT 328' FNL, 2315' FEL.
 BOTTOM HOLE AT 100' FSL & 1048' FEL.

LEGEND

= EXISTING MONUMENT
 = BOTTOM HOLE
 BH= BOTTOM HOLE
 = PROPOSED WELL
 = EXISTING WELL

PREPARED BY:

PFS

Petroleum Field Services, LLC
 7535 Hilltop Circle
 Denver, CO 80221

KERR-MCGEE OIL & GAS ONSHORE LP

FIELD DATE:
11-05-14

DRAWING DATE:
03-05-15

SURFACE LOCATION:

NW 1/4 NE 1/4, SEC. 20, T2N, R65W, 6TH P.M.
 WELD COUNTY, COLORADO

