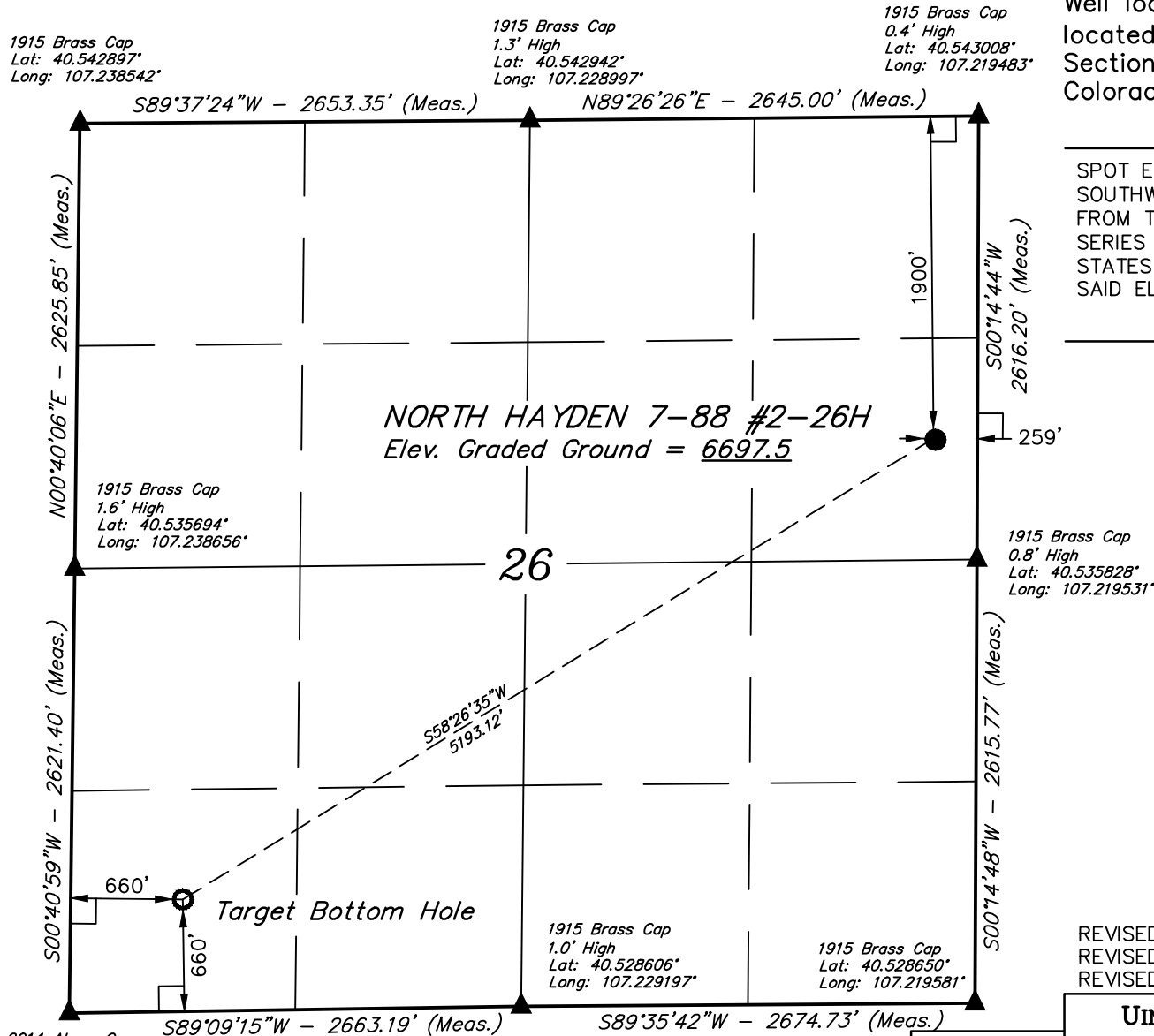


T7N, R88W, 6th. P.M.

SOUTHWESTERN ENERGY PRODUCTION COMPANY

Well location, NORTH HAYDEN 7-88 #2-26H,  
located as shown in the SE 1/4 NE 1/4 of  
Section 26, T7N, R88W, 6th. P.M., Routt County,  
Colorado

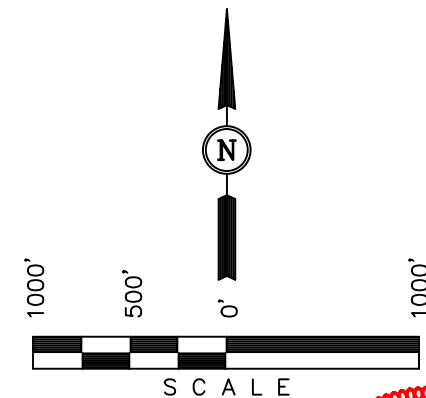


### BASIS OF ELEVATION

SPOT ELEVATION AT A ROAD INTERSECTION LOCATED IN THE  
SOUTHWEST 1/4 OF SECTION 20, T6N, R88W, 6th P.M. TAKEN  
FROM THE HAYDEN, QUADRANGLE, COLORADO, 7.5 MINUTE  
SERIES (TOPOGRAPHIC MAP) PUBLISHED BY THE UNITED  
STATES DEPARTMENT OF THE INTERIOR, GEOLOGICAL SURVEY.  
SAID ELEVATION IS MARKED AS BEING 6445 FEET.

### BASIS OF BEARINGS

BASIS OF BEARINGS IS A G.P.S. OBSERVATION.



### CERTIFICATE

THIS IS TO CERTIFY THAT THE ABOVE PLAT WAS PREPARED FROM FIELD  
NOTES OF ACTUAL SURVEYS MADE BY ME OR UNDER MY SUPERVISION  
AND THAT THE SAME ARE TRUE AND CORRECT TO THE BEST OF MY  
KNOWLEDGE AND BELIEF.

*Handwritten signature: Harold Marshall*  
REGISTERED LAND SURVEYOR  
REGISTRATION NO. 38130  
STATE OF COLORADO 06-08-15

REVISED: 06-08-15 T.B.  
REVISED: 05-27-15 J.W.  
REVISED: 05-26-15 T.E.

**UINTAH ENGINEERING & LAND SURVEYING**  
**85 SOUTH 200 EAST - VERNAL, UTAH 84078**  
**(435) 789-1017**

### LEGEND:

- └─ = 90° SYMBOL
- = PROPOSED WELLHEAD.
- = TARGET BOTTOM HOLE.
- ▲ = SECTION CORNERS LOCATED.

PDOP = 1.7

NAD 83 (TARGET BOTTOM HOLE)	NAD 83 (SURFACE LOCATION)
LATITUDE = 40°31'49.22" (40.530339)	LATITUDE = 40°32'16.04" (40.537789)
LONGITUDE = 107°14'10.93" (107.236369)	LONGITUDE = 107°13'13.62" (107.220450)
NAD 27 (TARGET BOTTOM HOLE)	NAD 27 (SURFACE LOCATION)
LATITUDE = 40°31'49.31" (40.530364)	LATITUDE = 40°32'16.13" (40.537814)
LONGITUDE = 107°14'08.72" (107.235756)	LONGITUDE = 107°13'11.41" (107.219836)
STATE PLANE NAD 83 (CO. NORTH)	STATE PLANE NAD 83 (CO. NORTH)
N: 1440768.44 E: 2517363.52	N: 1443395.57 E: 2521841.07
STATE PLANE NAD 27 (CO. NORTH)	STATE PLANE NAD 27 (CO. NORTH)
N: 440767.11 E: 1517521.39	N: 443394.23 E: 1521998.95

SCALE 1" = 1000'	DATE SURVEYED: 05-06-15	DATE DRAWN: 05-12-15
PARTY G.M. M.P. T.B.	REFERENCES G.L.O. PLAT	
WEATHER WARM	FILE SOUTHWESTERN ENERGY PRODUCTION COMPANY	