

R 88 W

CO107/13/112

R 87 W

R 89 W

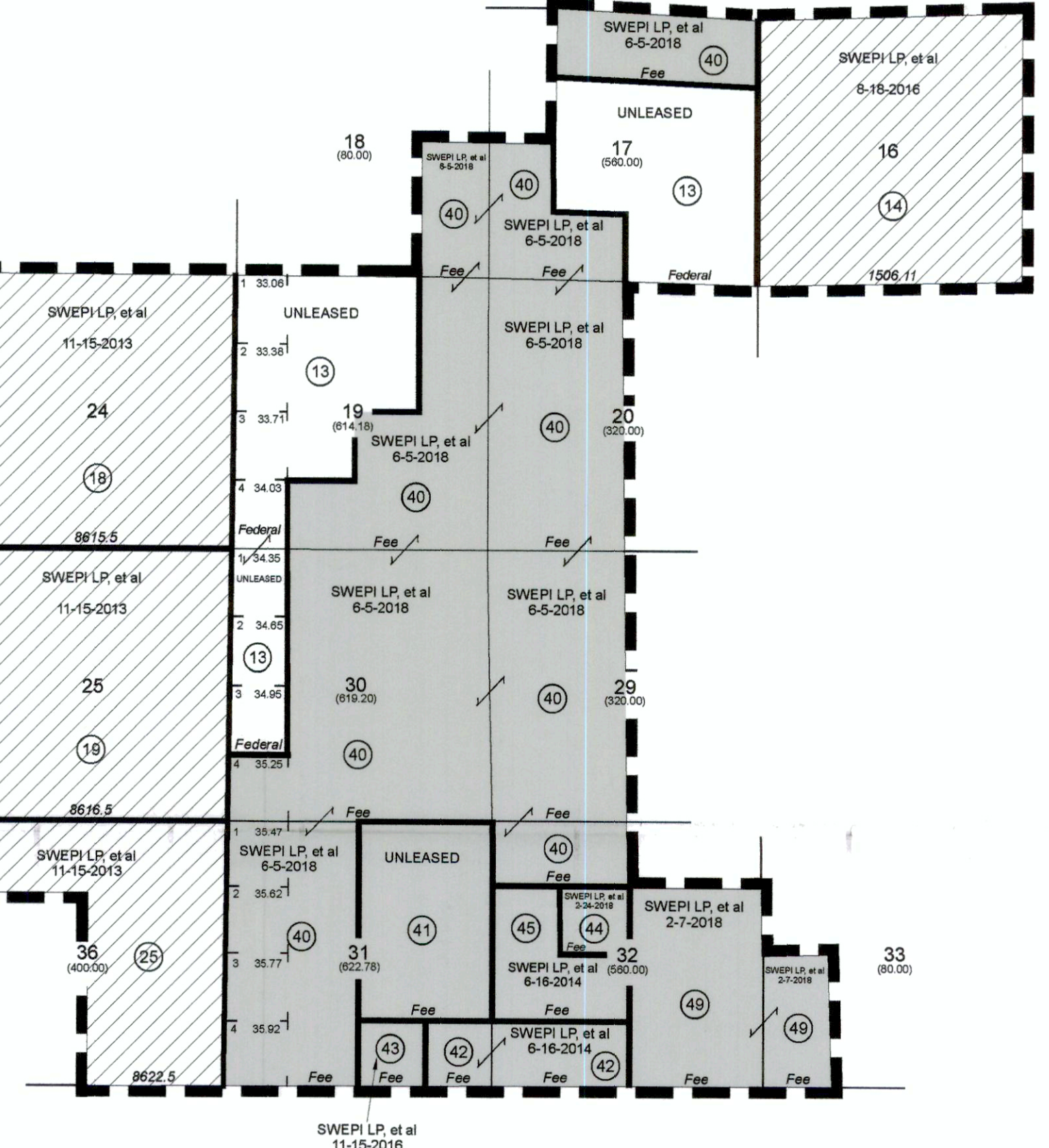
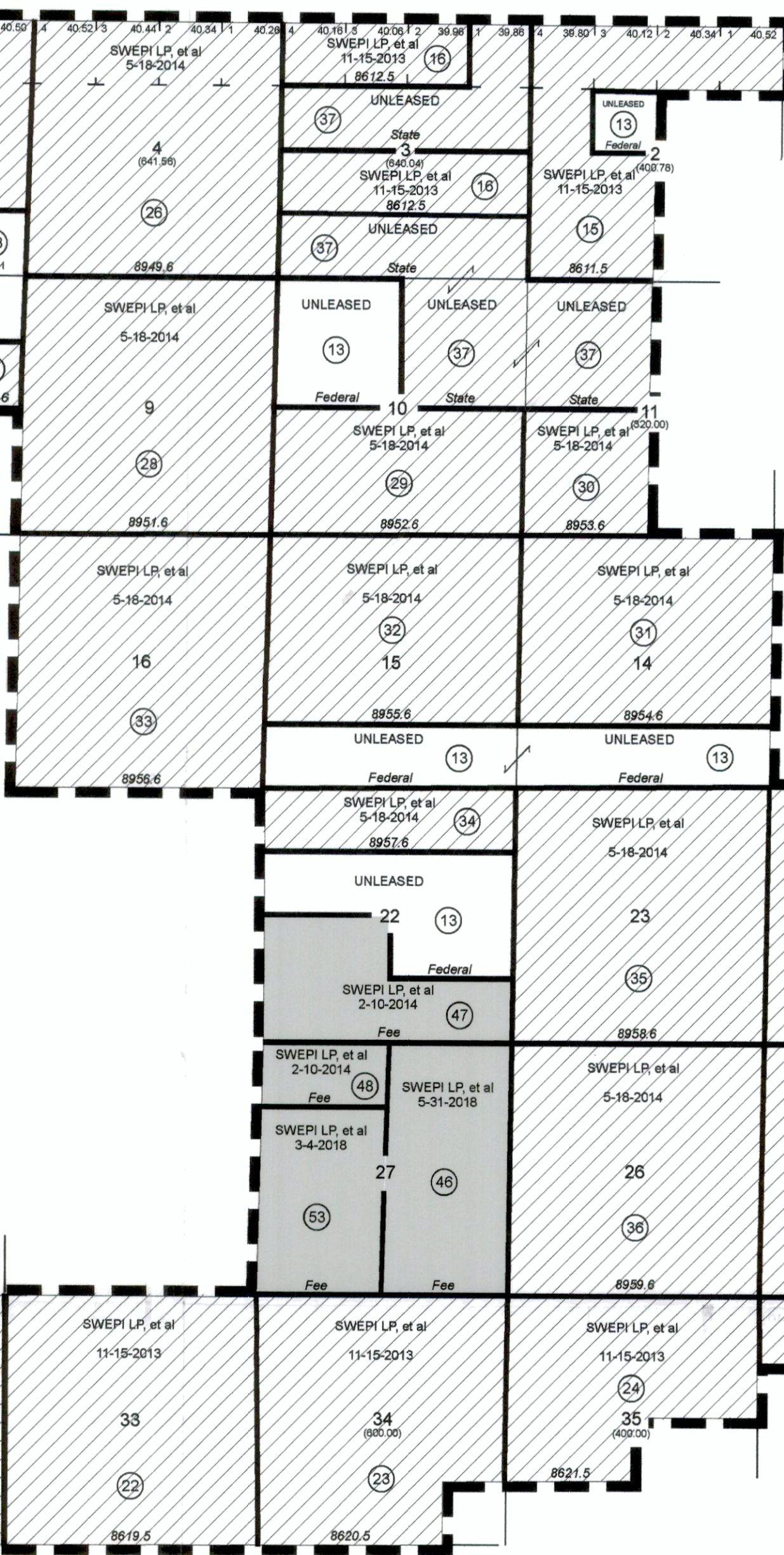
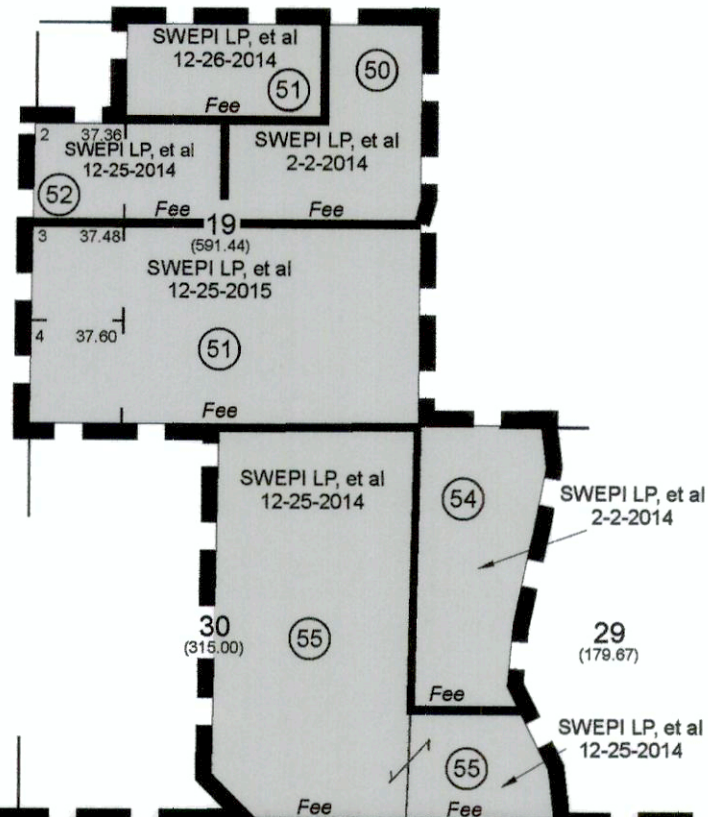
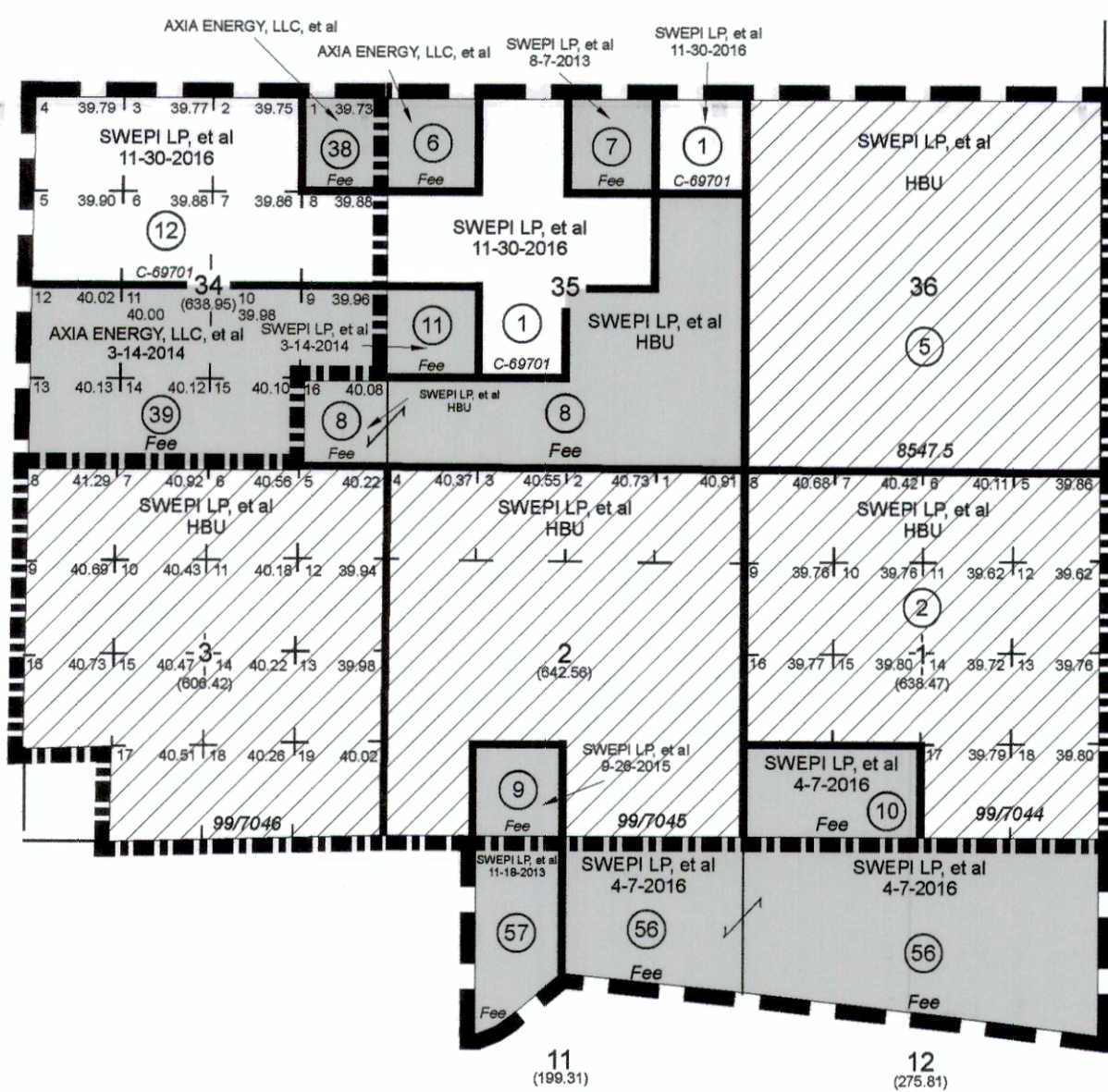
R 88 W

R 87 W

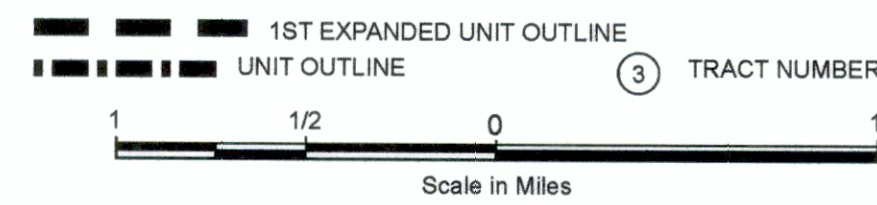
T 6 N

T 7 N

T 7 N



	ACREAGE	EXPANDED ACREAGE	TOTAL ACREAGE	PERCENTAGE
FEDERAL LANDS	240.00	1,956.96	2,196.96	9.51%
STATE LANDS	2,407.45	12,116.94	14,524.19	62.87%
PATENTED LANDS	560.08	5,819.67	6,379.75	27.62%
TOTALS	3,207.53	19,893.57	23,101.10	100.00%



NOTE: UNLESS OTHERWISE NOTED HEREIN THE SECTIONS ON THIS PLAT CONTAIN 640.00 ACRES

EXHIBIT "A"  
OTHEOS STATE UNIT AREA  
ROUTT COUNTY, COLORADO  
1ST EXPANSION

SWEPI, LP  
HOUSTON, TEXAS