

Patterson

**CEMENT BOND
GAMMA RAY
LOG**

Company Pioneer Natural Resources		Company Pioneer Natural Resources	
Well Erin 21-15	Well Erin 21-15		
Field Purgatoire River	Field Purgatoire River		
County Las Animas	County Las Animas		
State CO	State CO		
Location: 1217' FNL & 2284' FWL		API #: 05 071 08713 00	
SEC 15 TWP 33S RGE 67W		Other Services DEVI./ TEMP	
Permanent Datum	Ground Level	Elevation	7439'
Log Measured From	Kelly Bushing 4' Above G.L.		
Drilling Measured From	Kelly Bushing		
Elevation		K.B. 7443'	
		D.F. -----	
		G.L. 7439'	
Date 3-10-06			
Run Number	One		
Depth Driller	2200'		
Depth Logger	2019'		
Bottom Logged Interval	2013'		
Top Log Interval	Surface		
Open Hole Size	7 7/8"		
Type Fluid	Water		
Density / Viscosity	///		
Max. Recorded Temp.	120F		
Estimated Cement Top	Surface		
Time Well Ready	Portable Mast		
Time Logger on Bottom	11:00 AM		
Equipment Number	T342		
Location	Trinidad		
Recorded By	E. Ray		
Witnessed By			
Borehole Record			
Run Number	Bit	From	To
		Size	Weight
		From	To
Casing Record	Size	Wgt/Ft	Top
Surface String	8 5/8"		00
Prot. String			
Production String	5 1/2"		00
Liner			NA

<<< Fold Here >>>

All interpretations are opinions based on inferences from electrical or other measurements and we cannot and do not guarantee the accuracy or correctness of any interpretation, and we shall not, except in the case of gross or willful negligence on our part, be liable or responsible for any loss, costs, damages, or expenses incurred or sustained by anyone resulting from any interpretation made by any of our officers, agents or employees. These interpretations are also subject to our general terms and conditions set out in our current Price Schedule.

Comments

Wet Canyon, turn right @ Big Pine Ranch Rd., and take second Left to location,
Well furthest from entrance to location is original well.

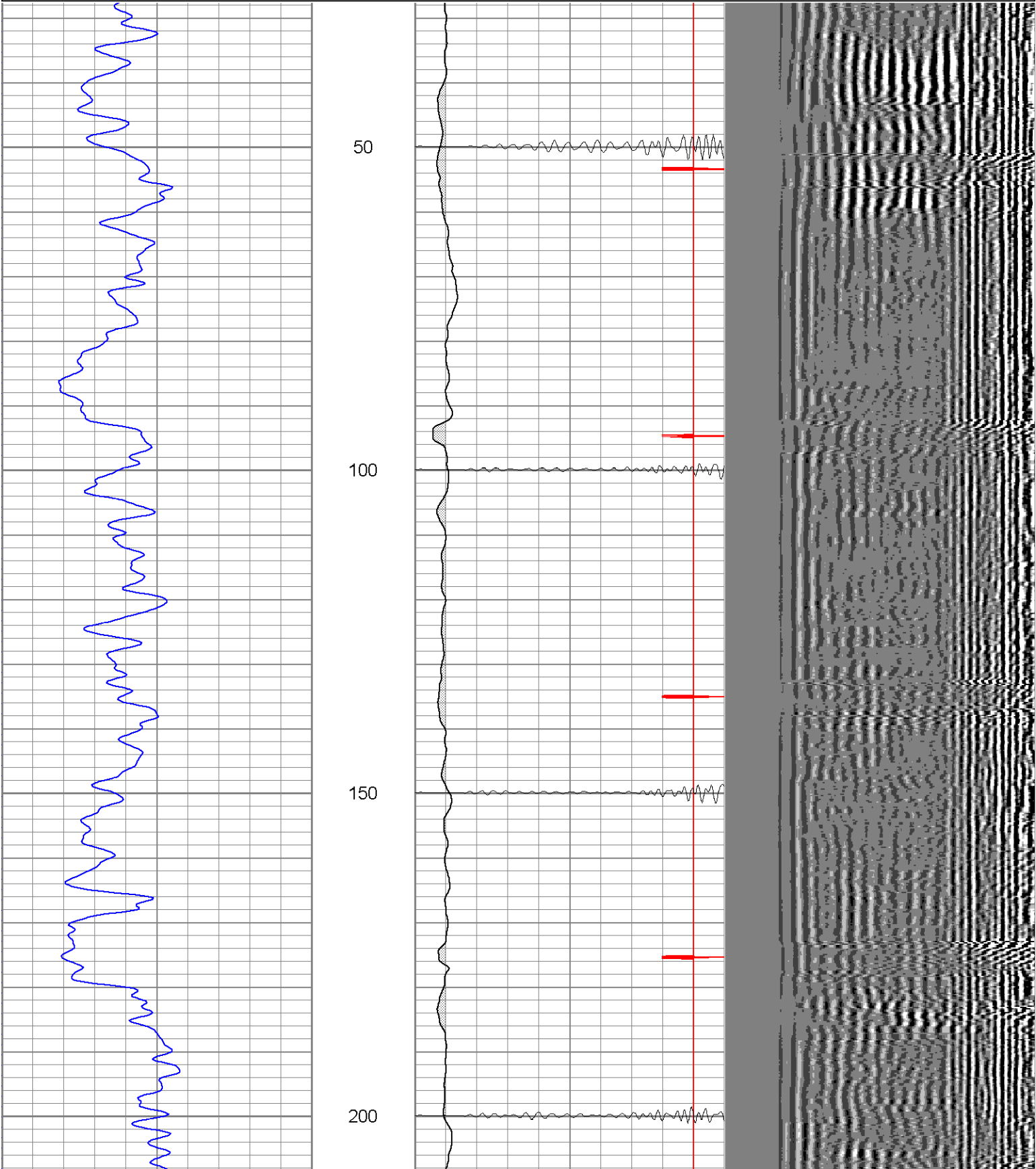
2 Deg Deviation

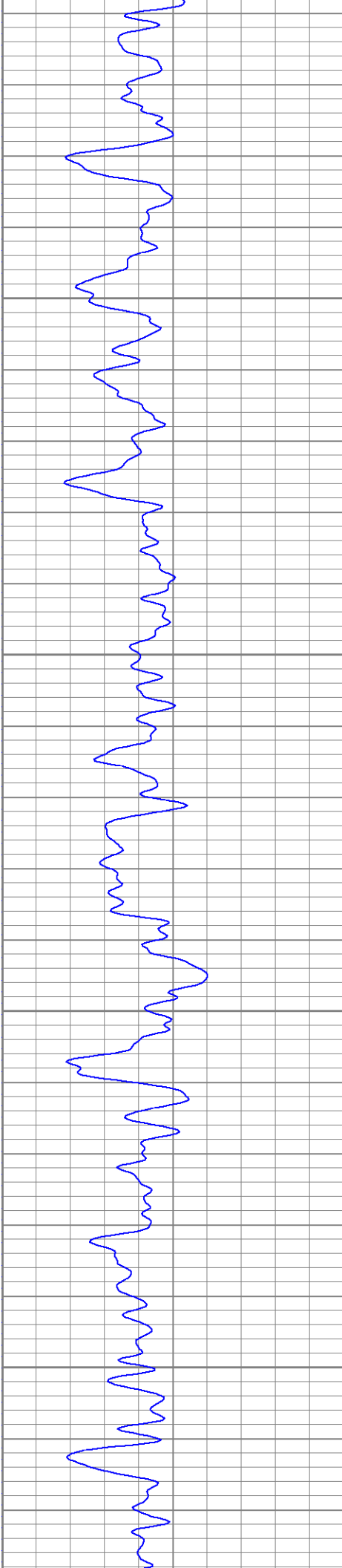
Patterson

Main Pass

Database File: erin31006b.db
Dataset Pathname: pass3
Presentation Format: cblrt
Dataset Creation: Fri Mar 10 11:31:59 2006 by Log Warrior 7.0 STD Ope
Charted by: Depth in Feet scaled 1:240

0	GR (GAPI)	200	0	AMP3 (mV)	100	200	Variable Density	1200
200	GR (GAPI)	400	18	CCL	-2			
400	TT3 (usec)	200	200	CBL5	1200			



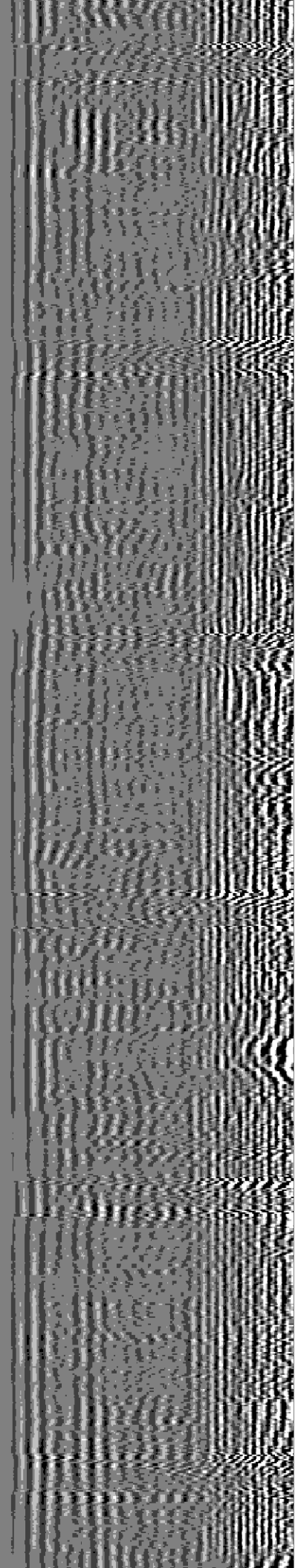


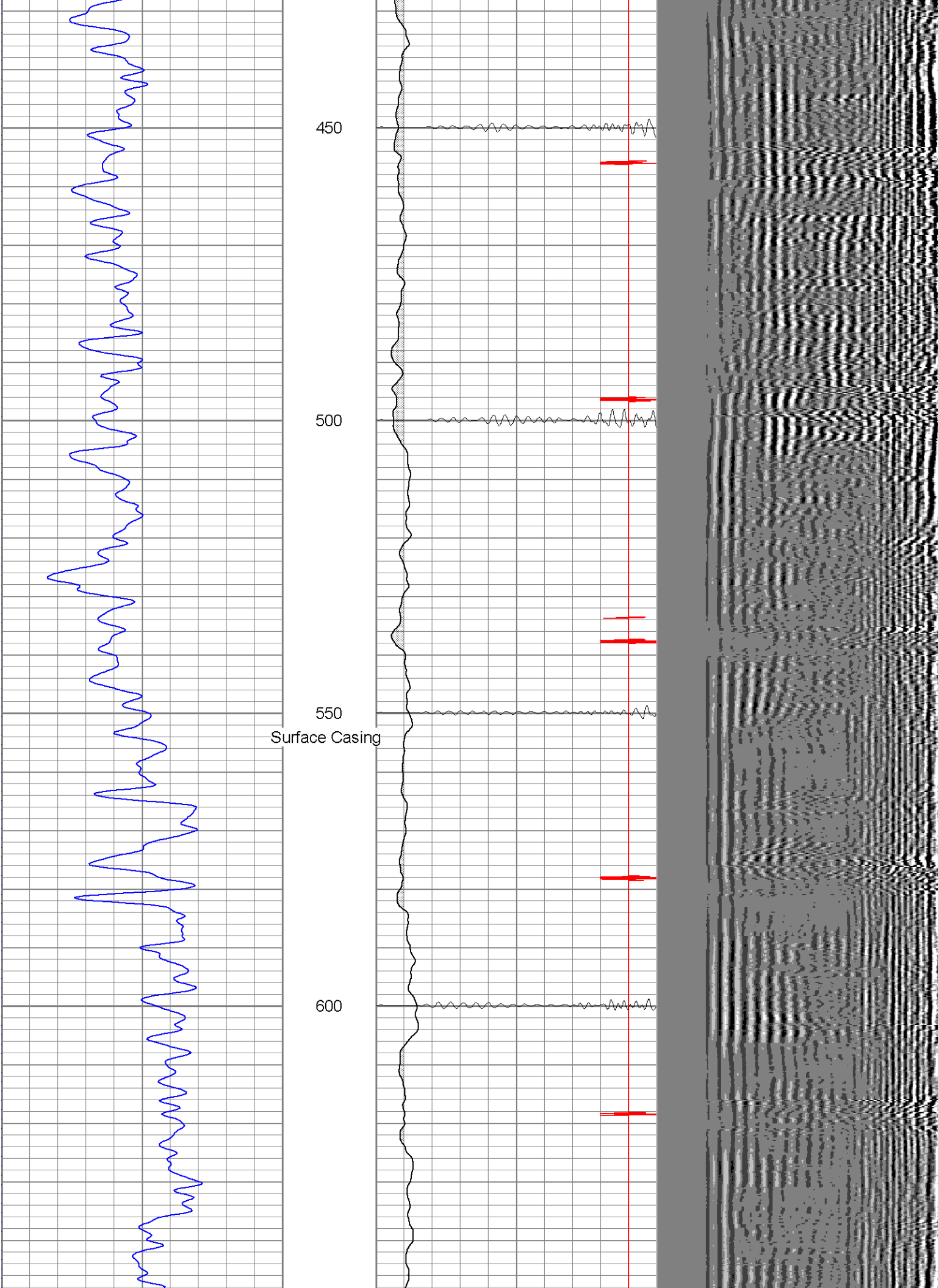
250

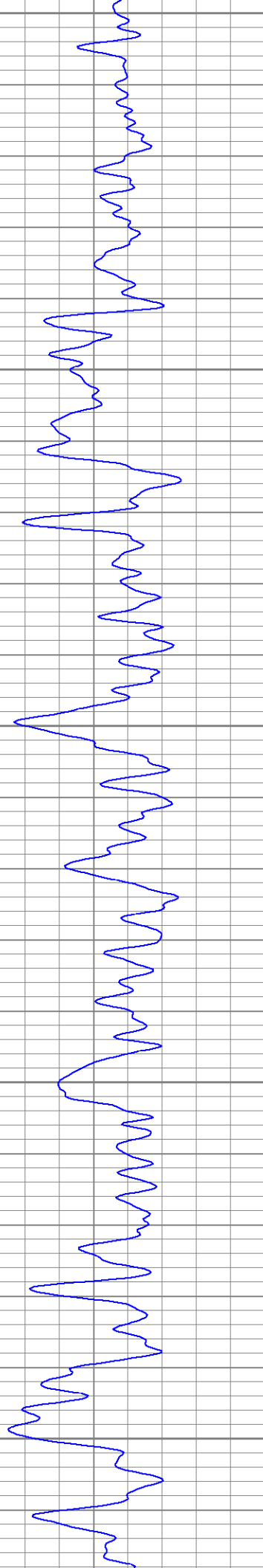
300

350

400







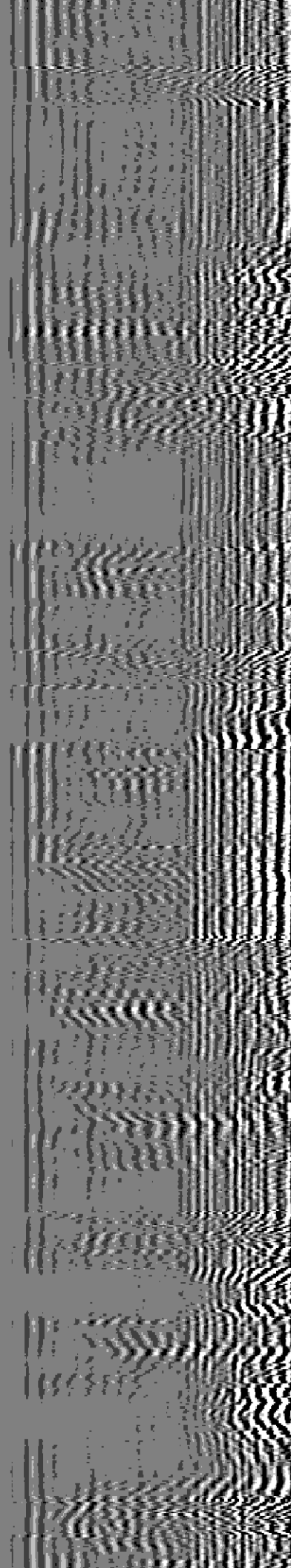
650

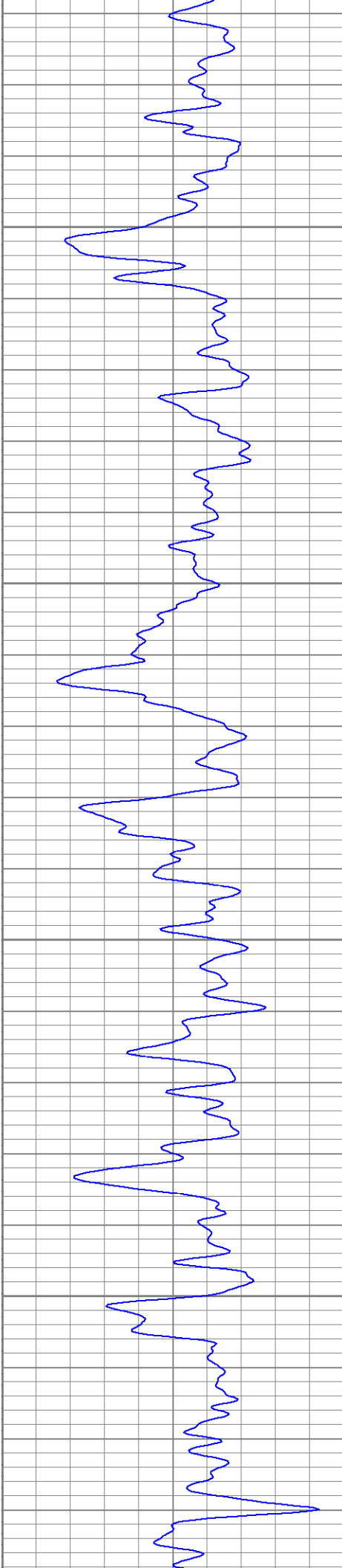
700

750

800

850



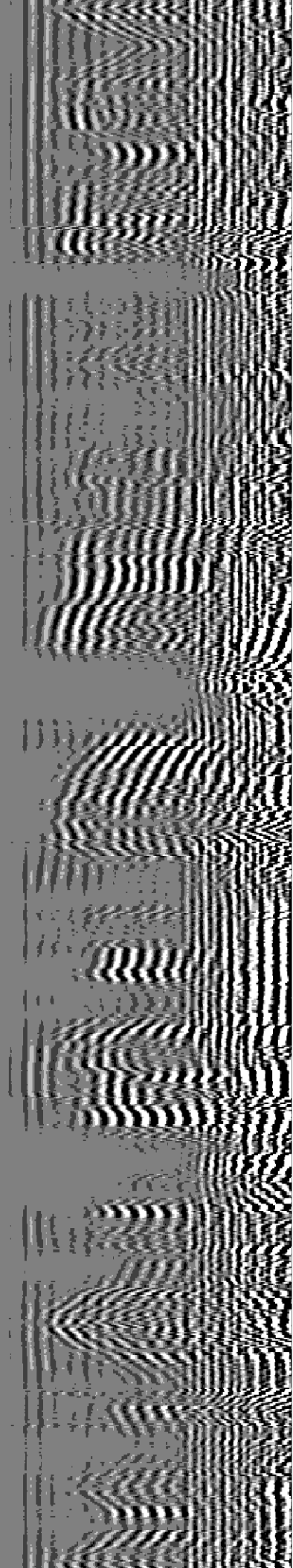


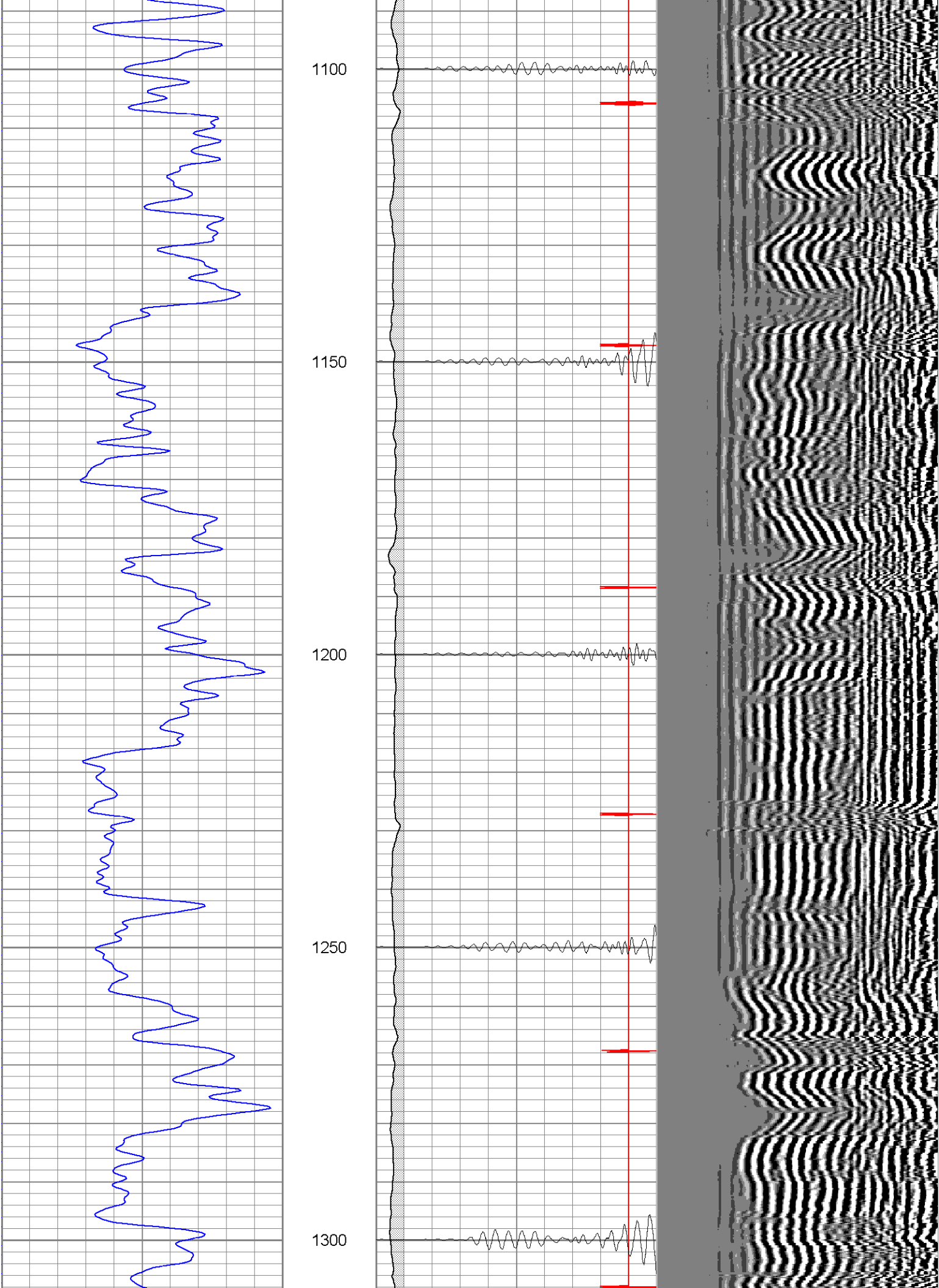
900

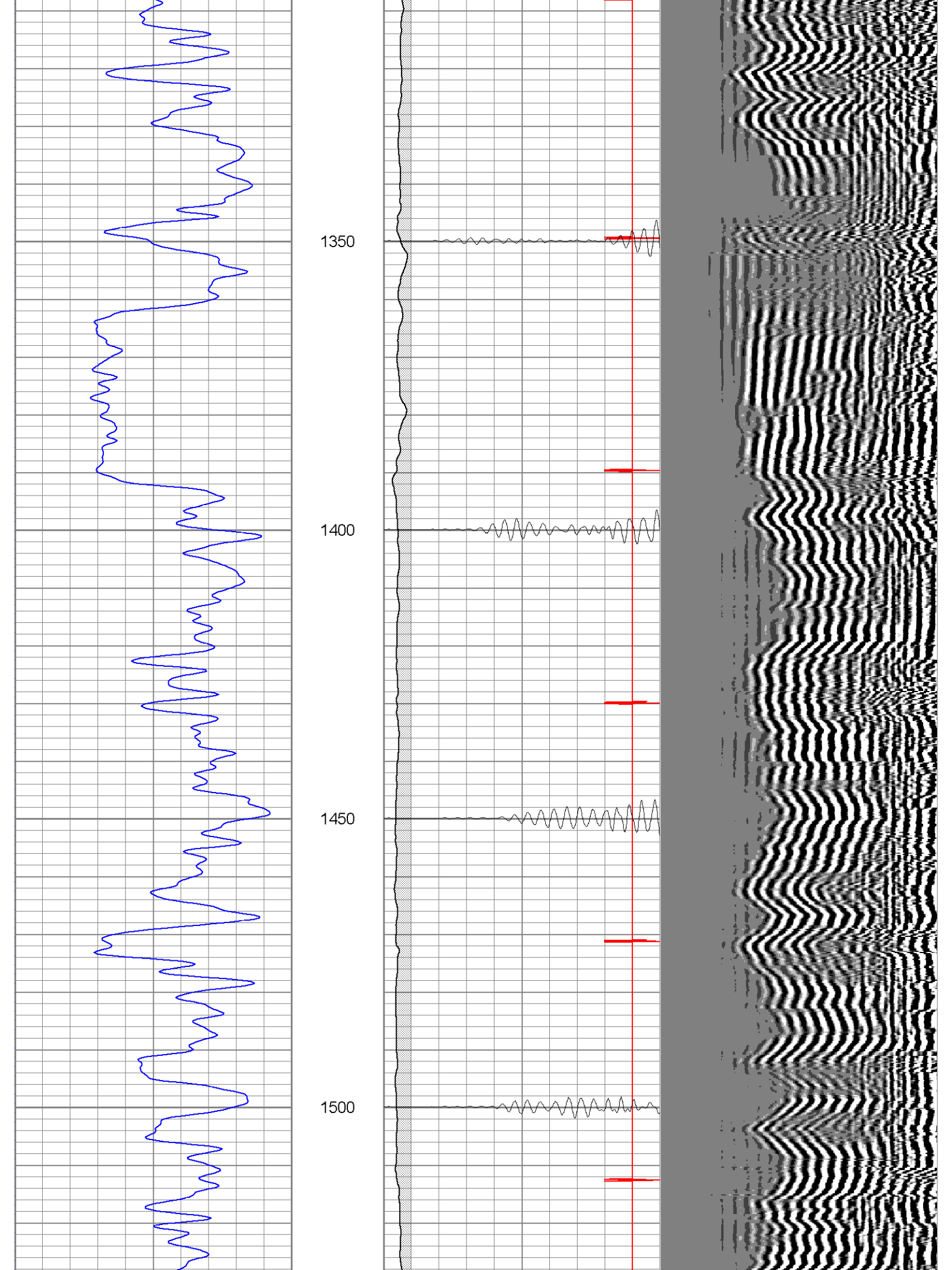
950

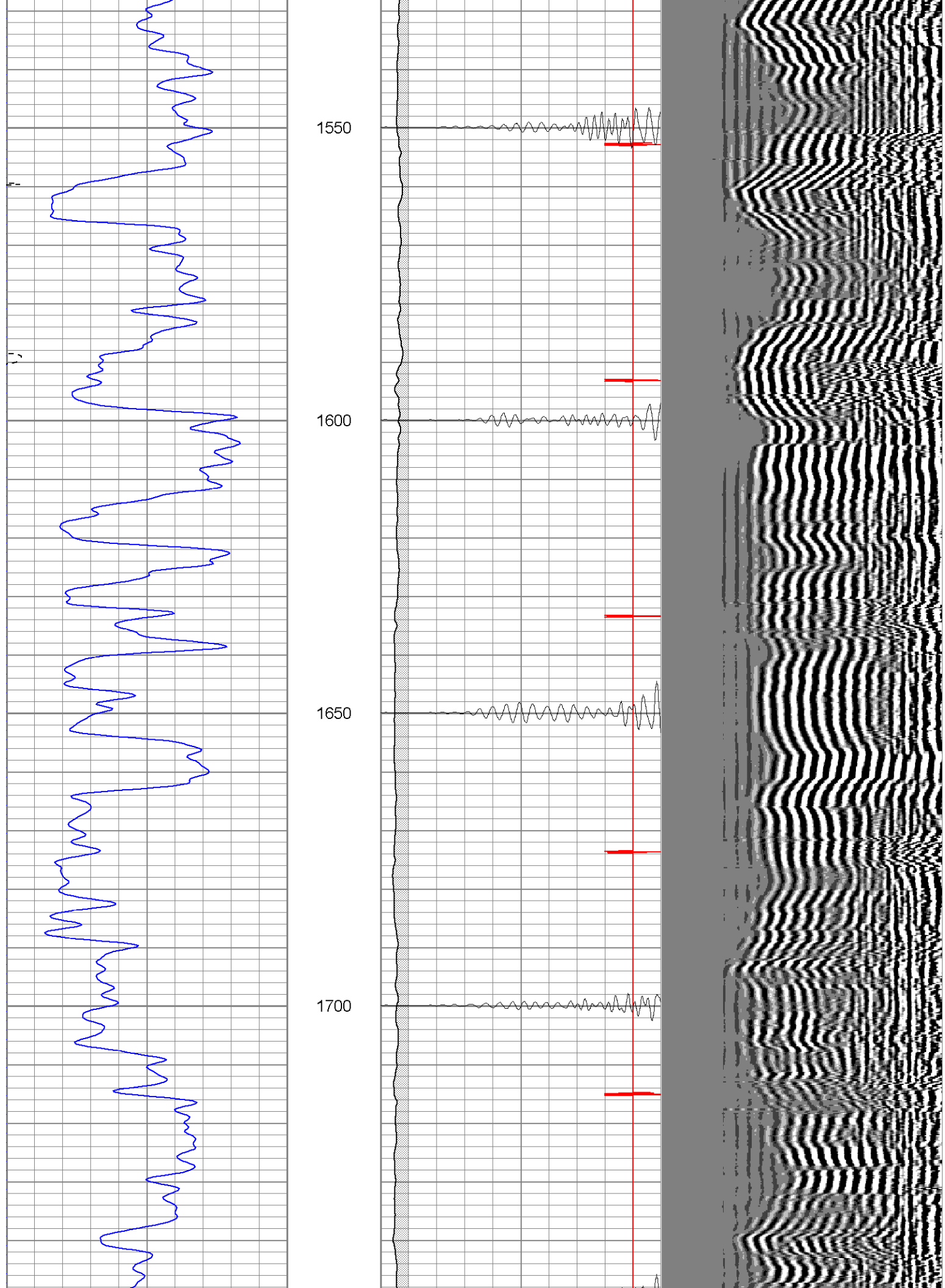
1000

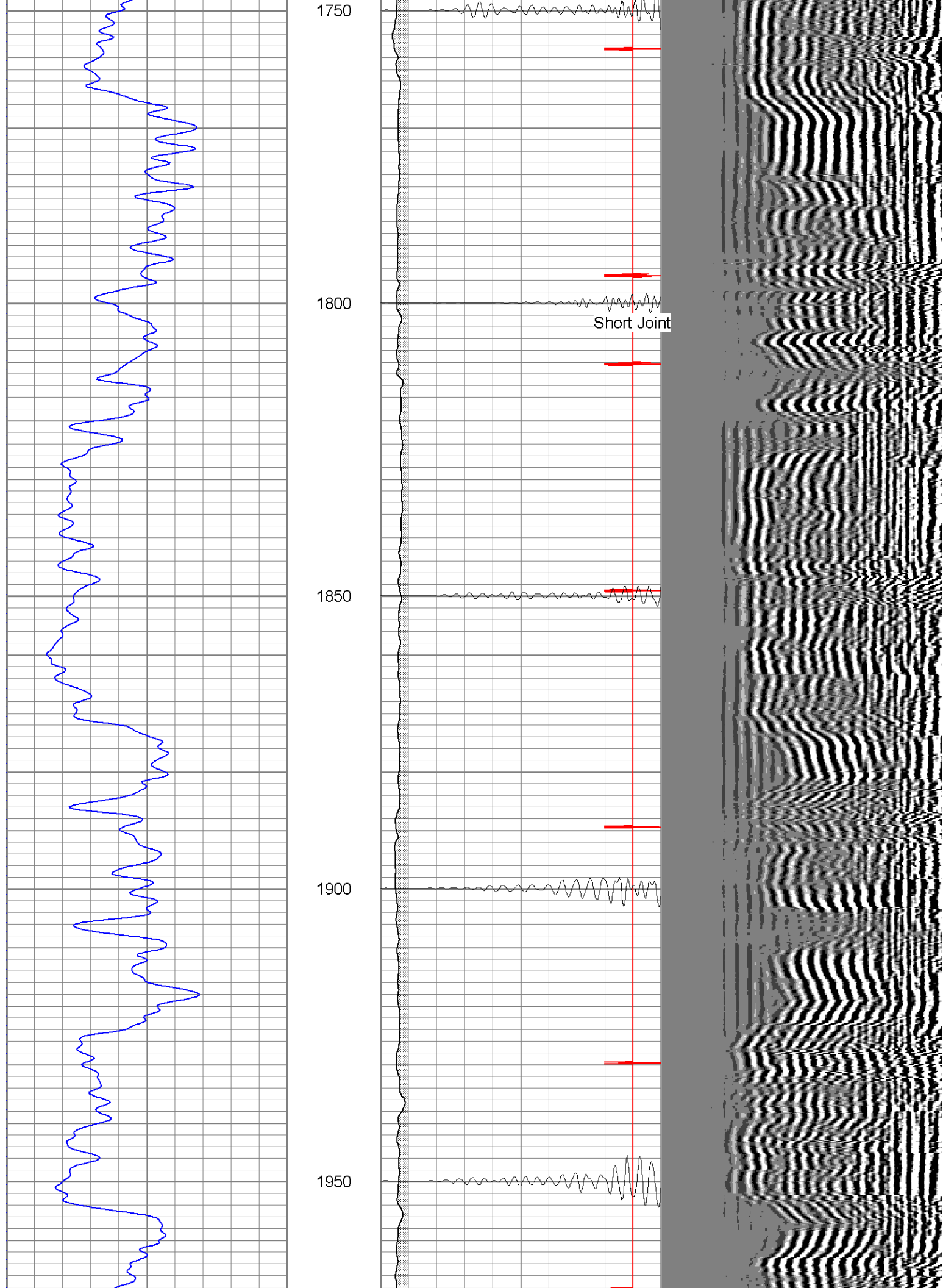
1050

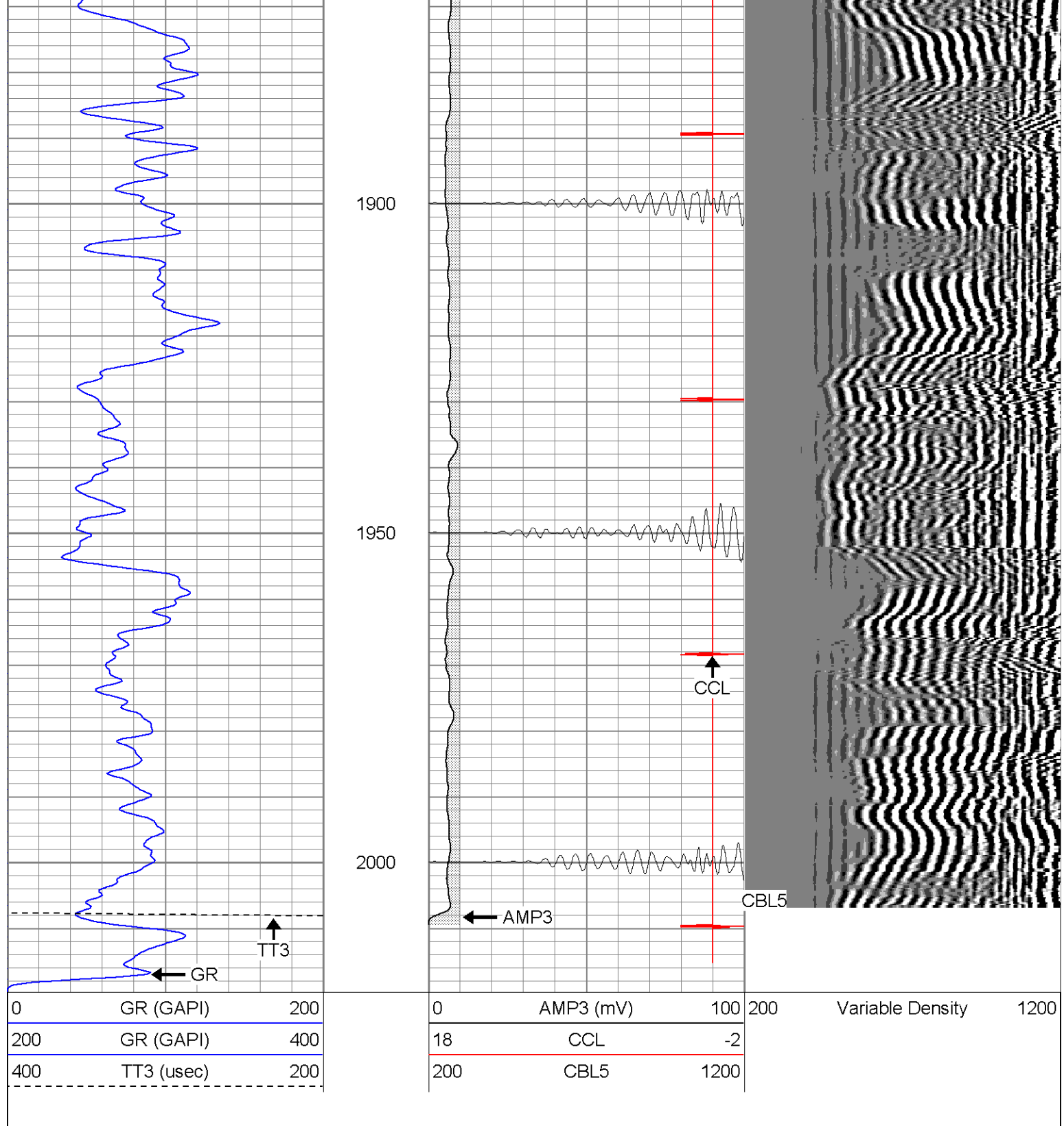












Gamma Ray Calibration Report

Serial Number: Titan2.75
Tool Model: 2.75
Performed: Fri Mar 03 12:40:19 2006

Calibrator Value: 200.0 GAPI

Background Reading: 40.0 cps
Calibrator Reading: 240.0 cps

Sensitivity: 1.0000 GAPI/cps

Cement Bond Log Calibration Report

Serial Number: Titan4
Tool Model: 4
Performed: Fri Mar 03 13:09:34 2006

Depth:	1054.62	ft
Casing Diameter:	5.5	in

3' Spacing 5' Spacing

Signal Zero:	1	1	mV
Calibrated Amplitude:	85	85	mV
Reading at Signal Zero:	0.00161133	0.0143555	V
Reading in Free Pipe:	1.7	1.65081	V

Gain:	49.4586	51.3306
Offset:	0	0.263125

Sensor	Offset (ft)	Schematic	Description	Len (ft)	OD (in)	Wt (lb)
			CHD-None (0)	0.75	1.50	5.00
			CENT-X (2)	3.00	1.69	25.00
WVF5	12.82					
WVF3	11.82		CBL-4 (Titan4)	8.15	2.25	110.00
			CENT-X (1)	3.00	1.69	25.00
CCL	4.27		CCL-2.75 (Titan2.75)	1.71	2.75	15.00
GR	1.42		GR-2.75 (Titan2.75) Two Point	3.77	2.75	25.00
			Dataset:	/field/well/run/_plots_/_jobs_/cbl		
			Total Length:	20.38 ft		
			Total Weight:	205.00 lb		
			O.D.	2.75 in		