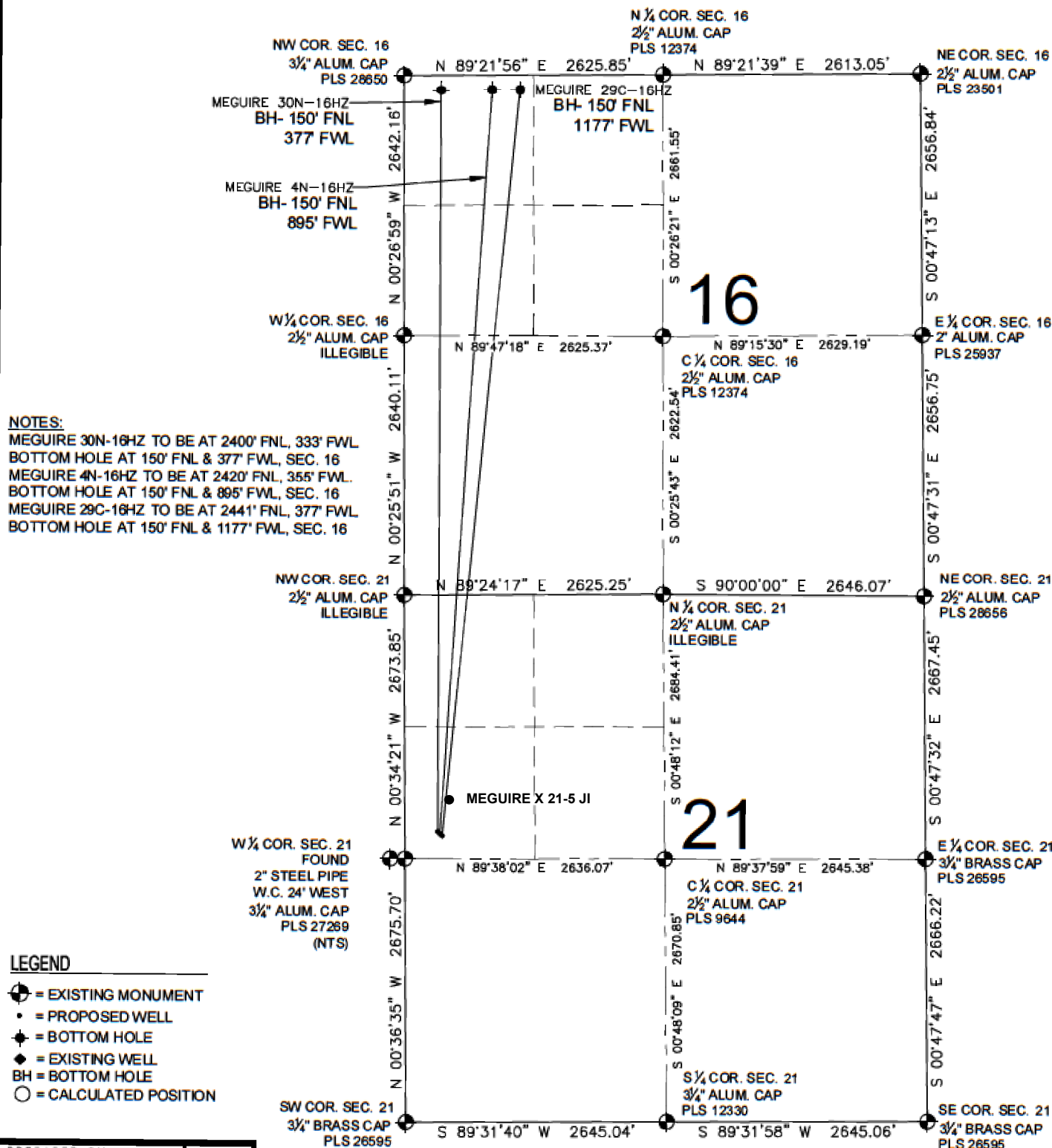


MEGUIRE 4N-16HZ MULTI-WELL PLAN

SECTION 21, TOWNSHIP 2 NORTH, RANGE 65 WEST, 6TH P.M.



PREPARED BY:

PFS



Petroleum Field Services, LLC
 7535 Hilltop Circle
 Denver, CO 80221

KERR-MCGEE OIL & GAS ONSHORE LP

FIELD DATE:
 10-17-14

DRAWING DATE:
 02-23-15

SURFACE LOCATION:

SW 1/4 NW 1/4, SEC. 21, T2N, R65W, 6TH P.M.
 WELD COUNTY, COLORADO

