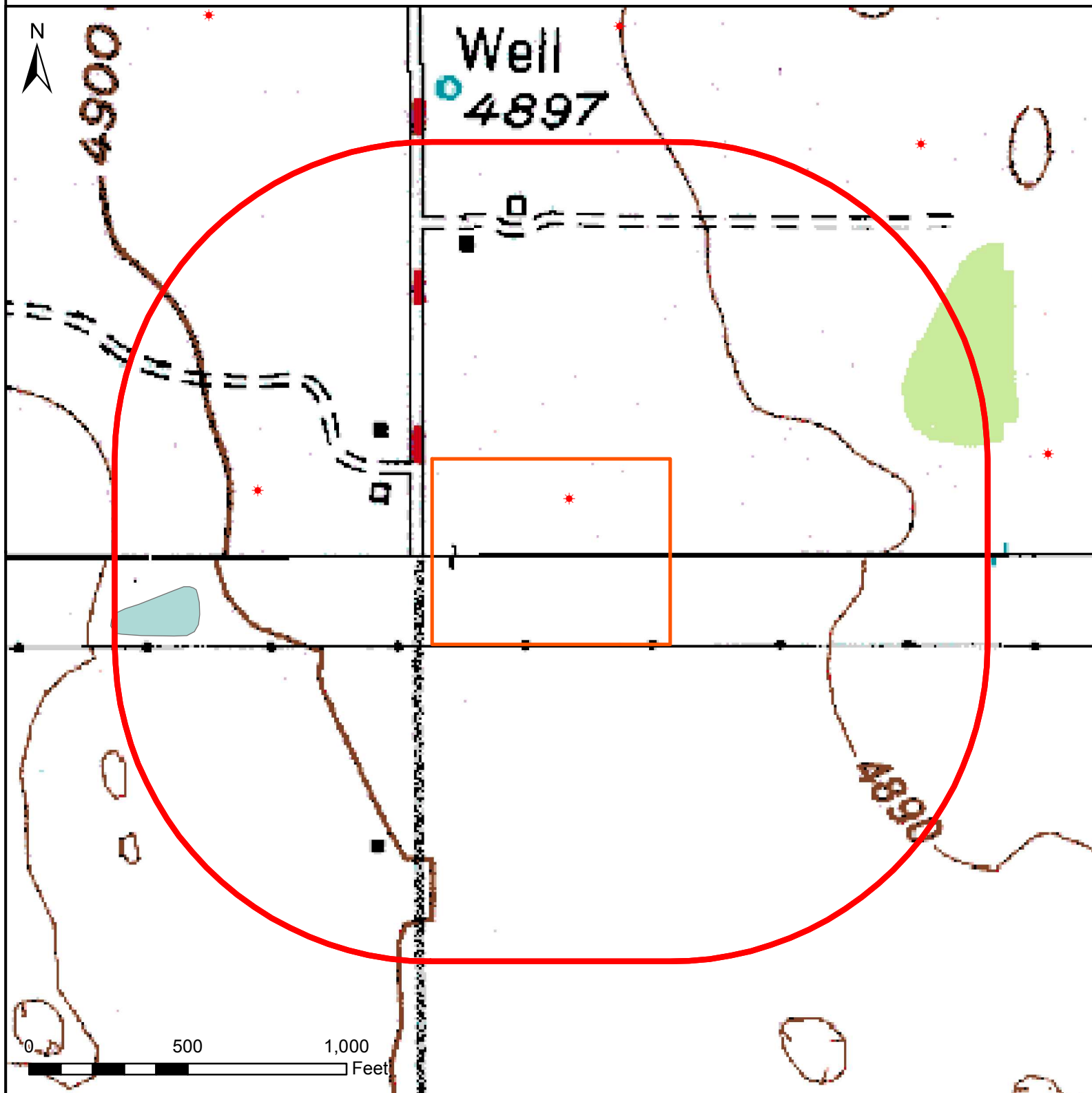


# HYDROLOGY MAP

## MEGUIRE 4N-16HZ







### Nearest Surface Water Feature

Man-made Pond: 733' W, Elev 4904'  
Loc Elev: 4896'

All measurements are made from  
edge of disturbed area.

### Legend

-  1000' buffer
-  Well pad (proposed)
-  Existing oil/gas well (COGCC)
-  Man-made pond



Date created: 4/29/2015  
Created by: APC Regulatory GIS  
Scale: 1:5,000  
Projection: NAD83 UTM 13N