



Well Name: RGU 442-26-198  
Surface Location: RGU 42-26-198  
North American Datum 1983 , US State Plane 1983 , Colorado Central Zone  
Ground Elevation: 6622.00

+N/-S  
0.00

+E/-W  
0.00

Northing  
1778116.30

Easting  
2199623.90

Latitude  
39.935222

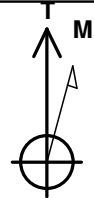
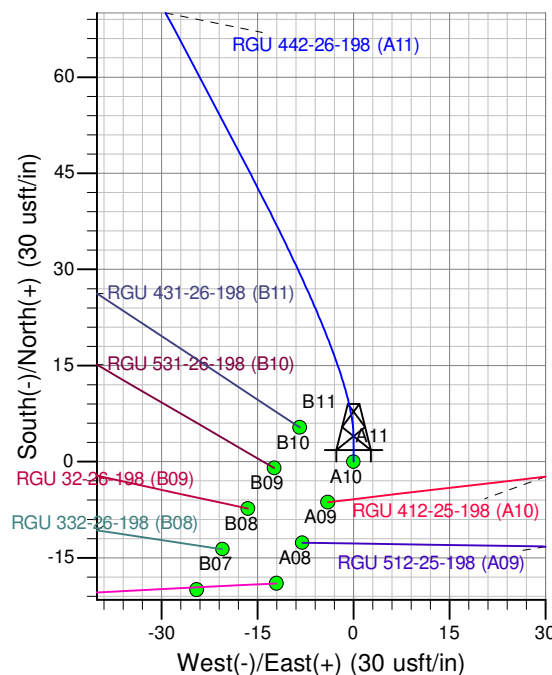
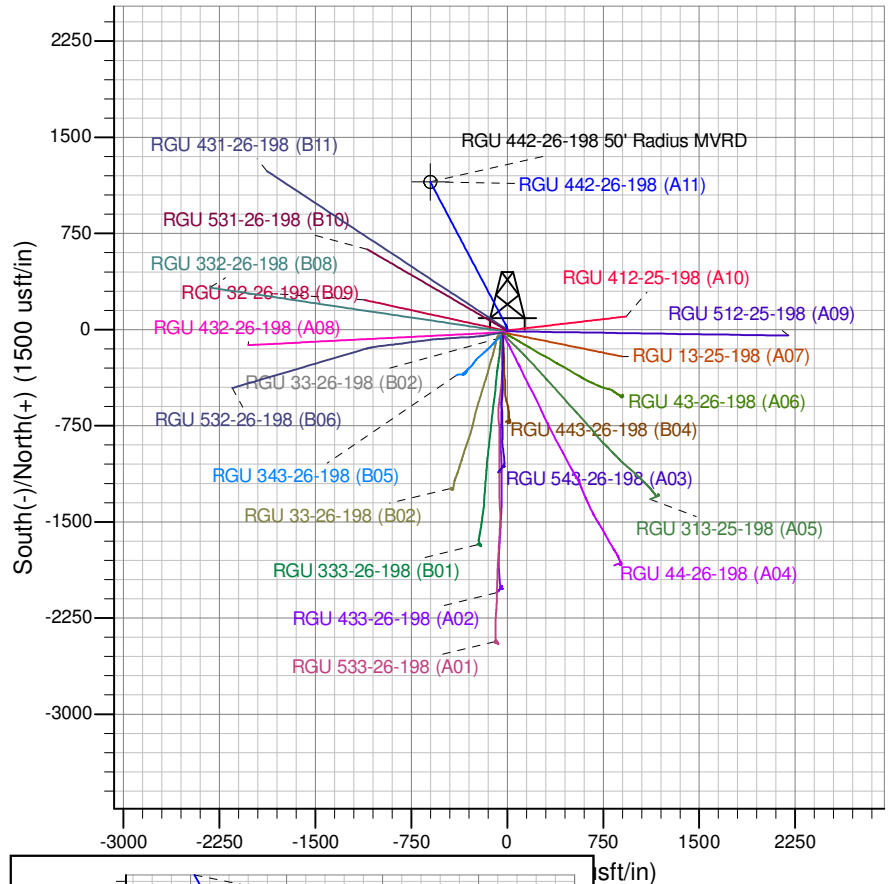
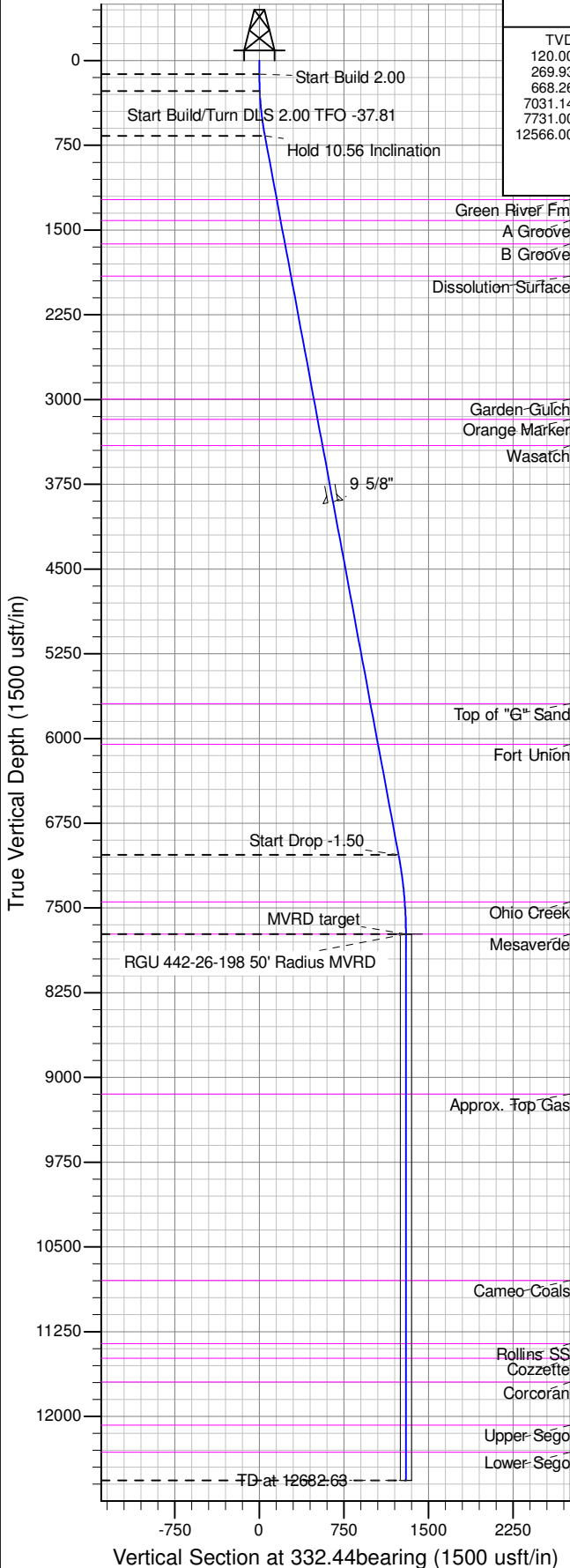
Longitude  
-108.354478

Slot  
A11

KB @ 6646.00usft (HP 318)

#### ANNOTATIONS

TVD	MD	Inc	Azi	+N/-S	+E/-W	Vsect	Departure	Annotation
120.00	120.00	0.00	0.00	0.00	0.00	0.00	0.00	Start Build 2.00
269.93	270.00	3.00	0.00	3.93	0.00	3.48	3.93	Start Build/Turn DLS 2.00 TFO -37.81
668.26	671.35	10.56	332.15	47.01	-17.21	49.64	50.63	Hold 10.56 Inclination
7031.14	7143.80	10.56	332.15	1095.50	-571.30	1235.52	1236.53	Start Drop -1.50
7731.00	7847.63	0.00	0.00	1152.67	-601.51	1300.18	1301.19	MVRD target
12566.00	12682.63	0.00	0.00	1152.67	-601.51	1300.18	1301.19	TD at 12682.63



Azimuths to True North  
Magnetic North: 10.36°  
Magnetic Field  
Strength: 52273.7snT  
Dip Angle: 65.99°  
Date: 1/24/2013  
Model: IGRF2010

Project: RG 26-01S-098W  
Site: RGU 42-26-198  
Well: RGU 442-26-198  
Design #3 8May15 sam