

OPERATOR: **WPX ENERGY**

WELL NAME: GM 322-28
FIELD NAME: GRAND VALLEY
DRILLING RIG: H&P 318
API #: 05-045-22501

LOCATION: SEC. 28 T6S R96W
SURFACE HOLE: 1555' FSL , 2300' FWL
BOTTOM HOLE: 1515' FNL , 2479' FWL
SCALE: 1"=100'



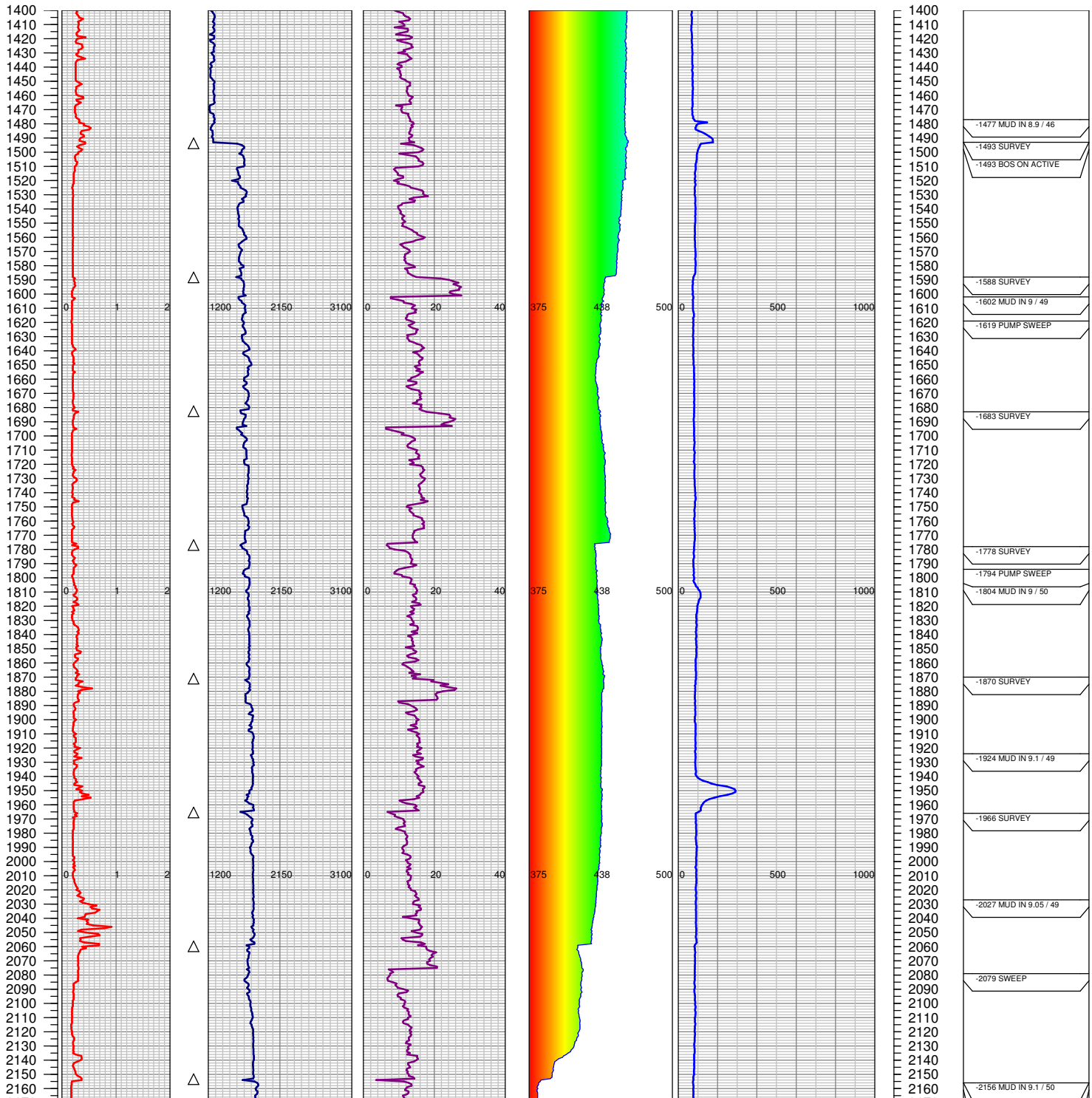
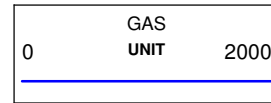
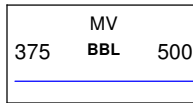
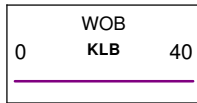
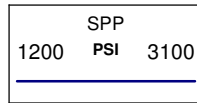
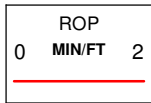
533 Bogart Lane, Unit A
Grand Junction, CO 81505
Office (970) 424-5162

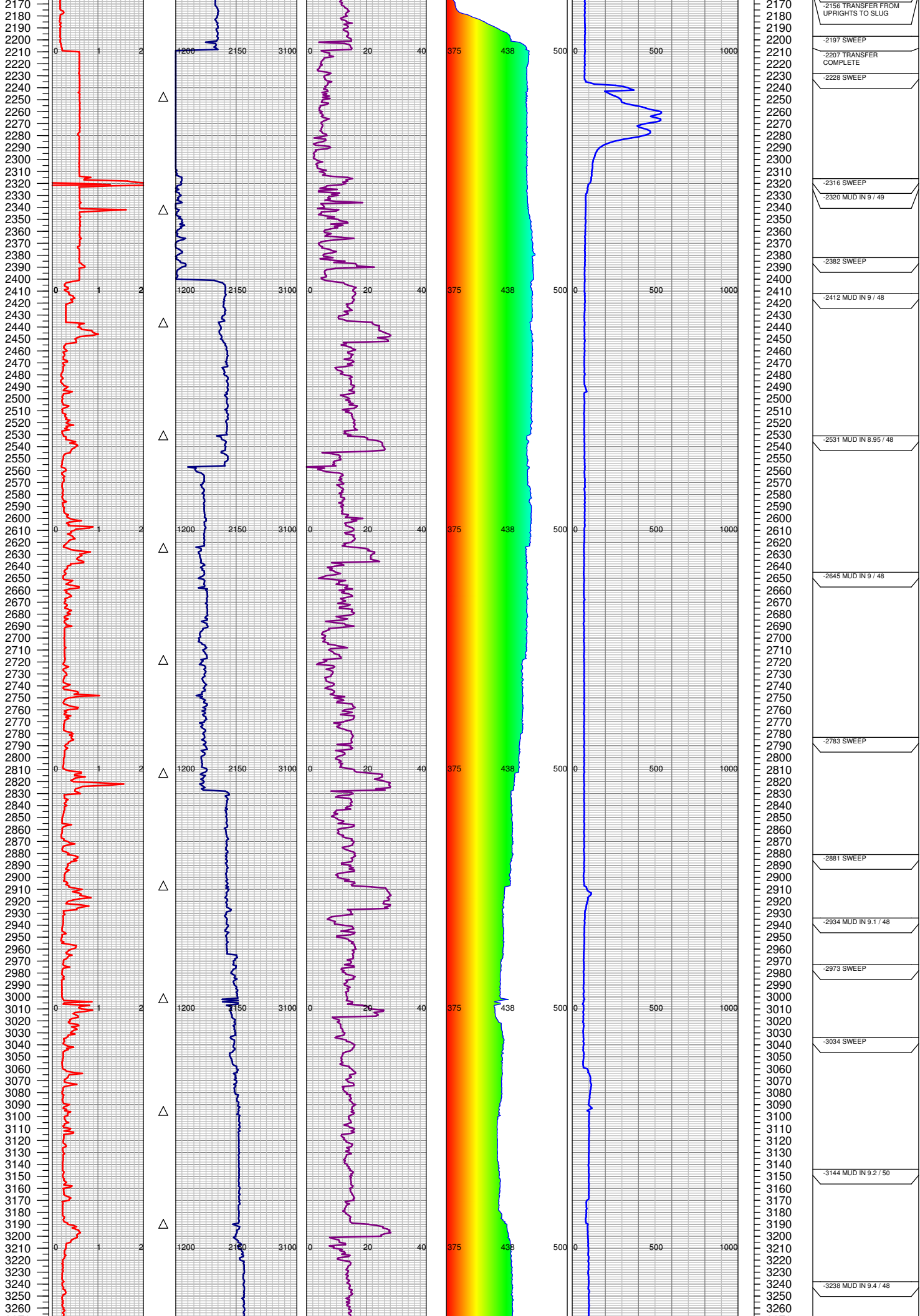
GM 322-28

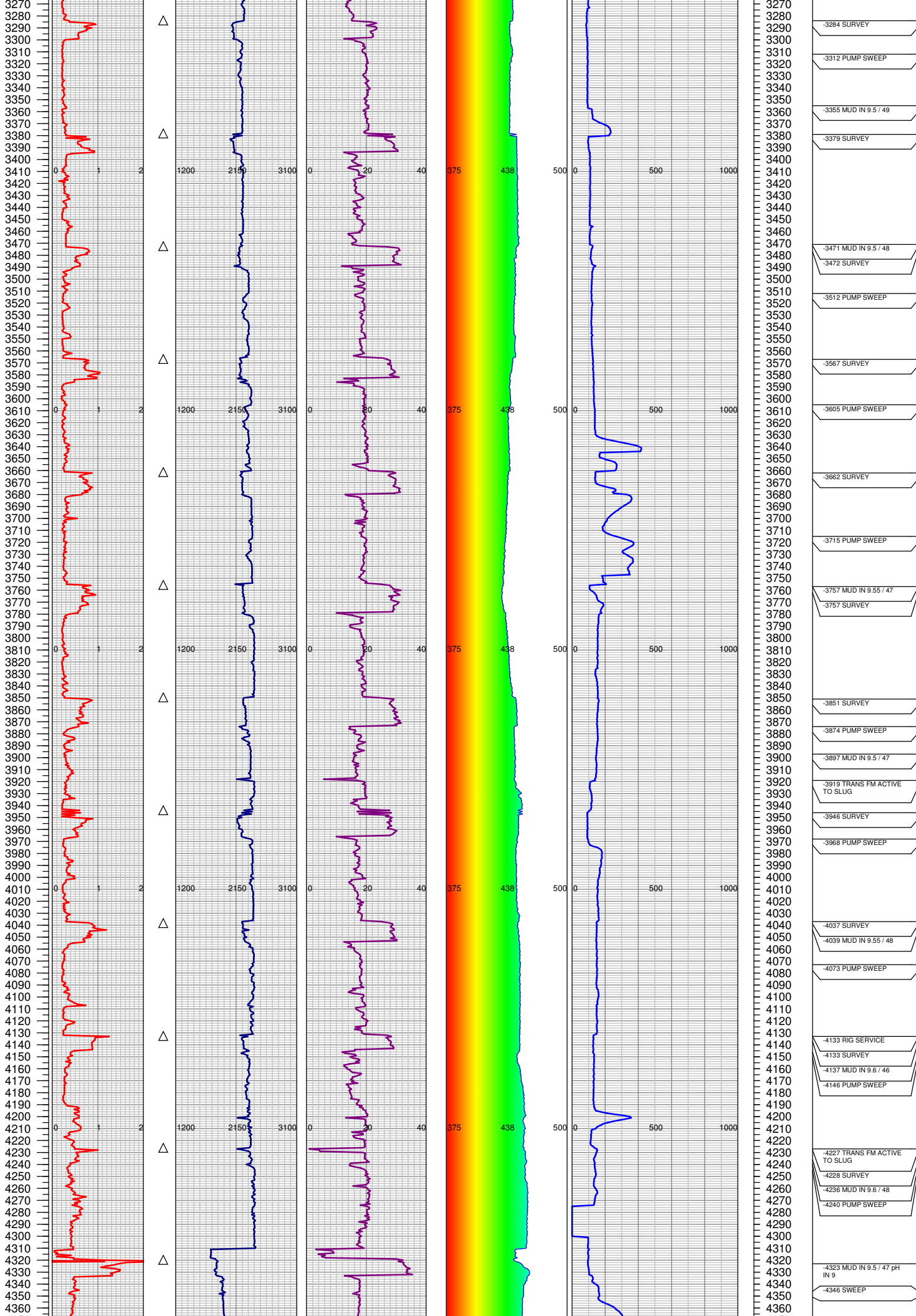
COUNTY: GARFIELD
STATE: COLORADO
DRILLING FLUID: LSND
LOGGER: LUKE DAVENPORT

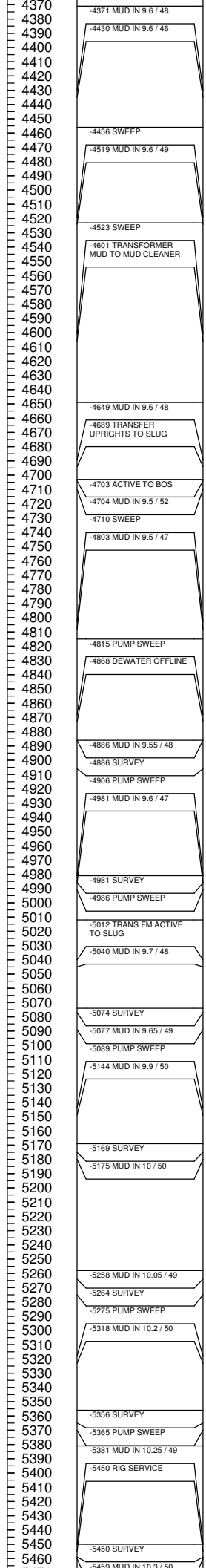
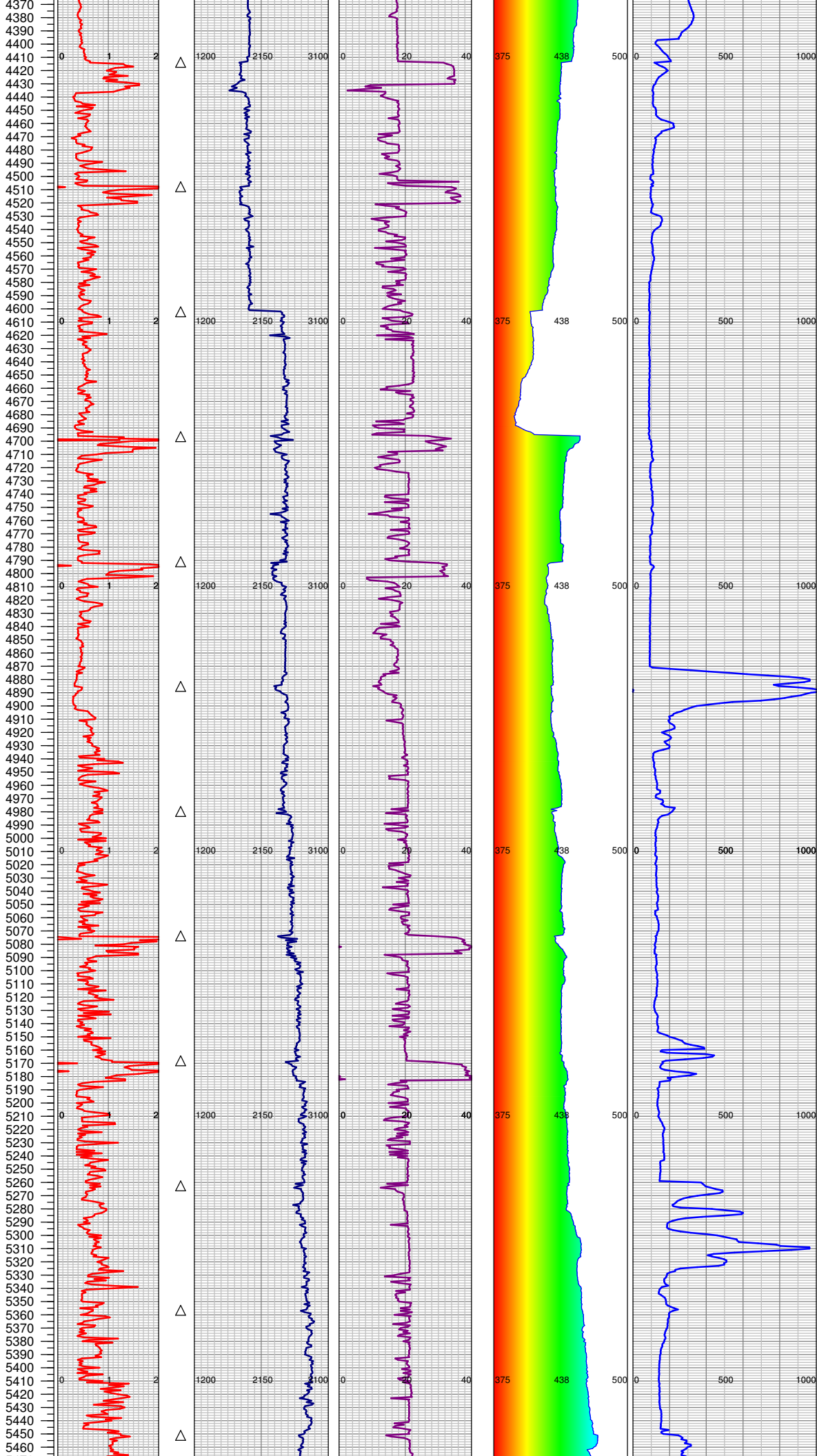
GROUND ELEVATION: 5476'
KELLY BUSHING: 5500'
TVD VS. MD = -625'
DEPTHS LOGGED: 1400'-7490'

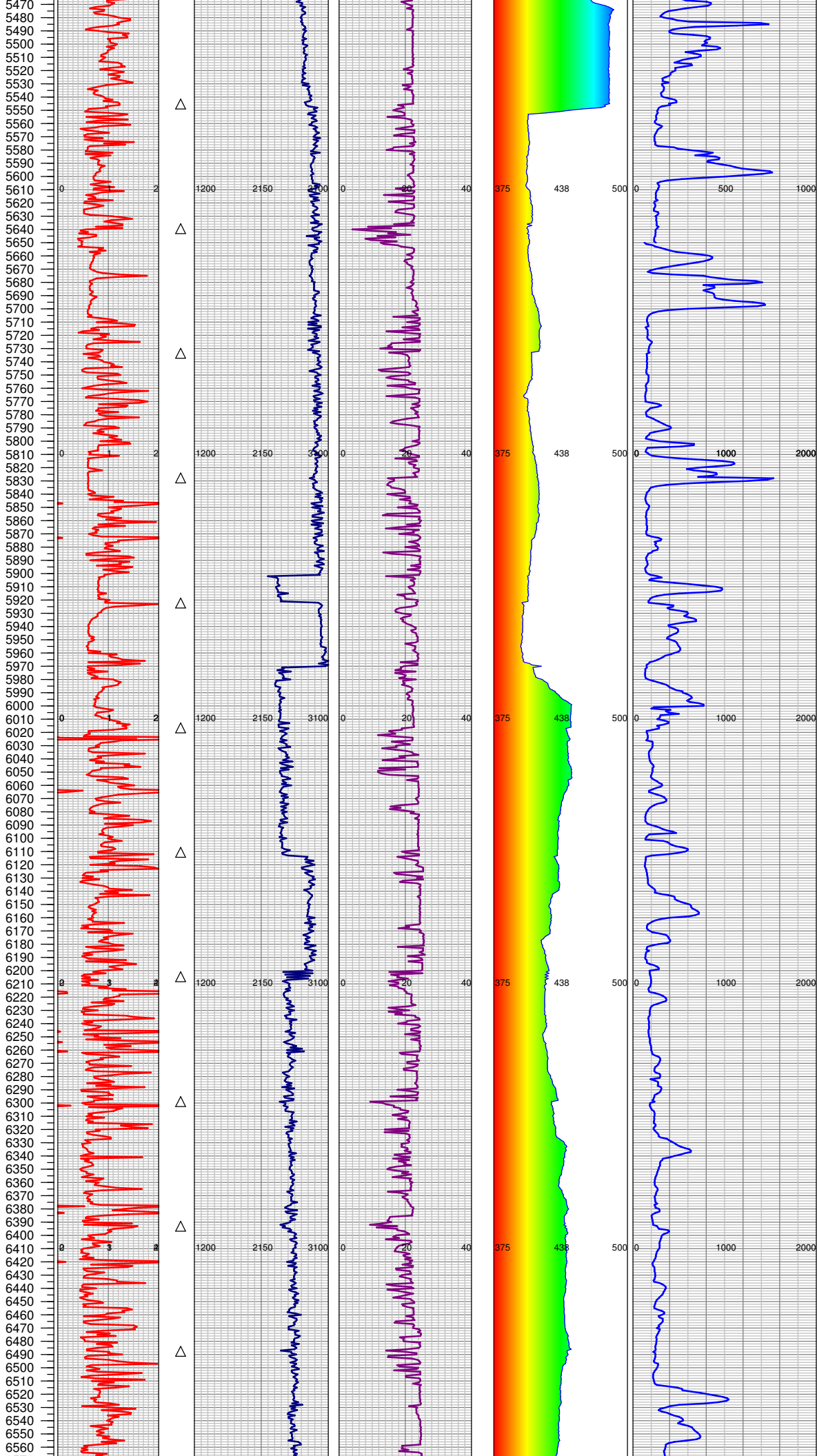
SPUD DATE: 2/3/2015
FGS BEGIN LOGGING: 2/5/2015
TD DATE: 2/9/2015
DATES LOGGED: 2/5/2015-2/9/2015



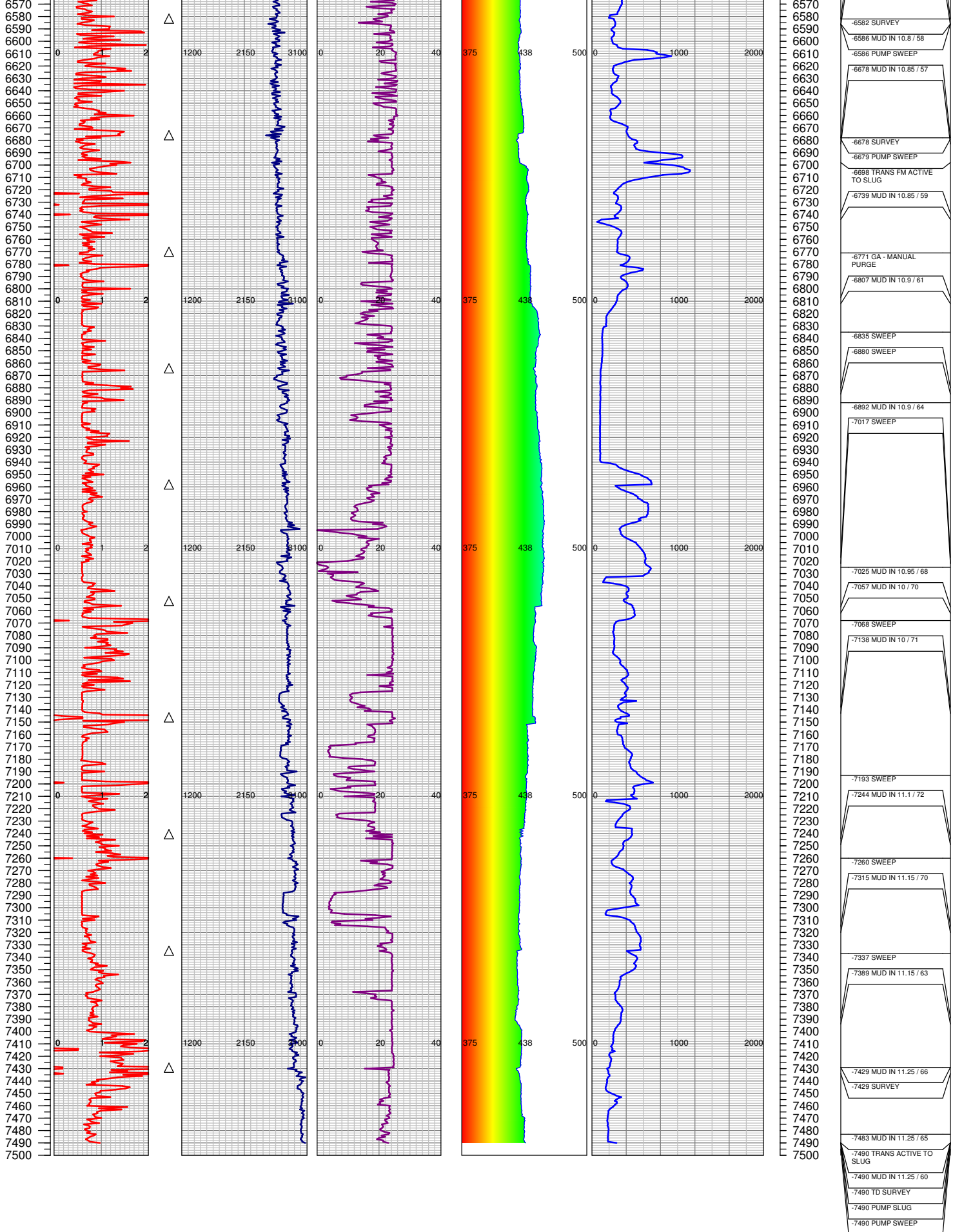








- 5470
 - 5480
 - 5490
 - 5500
 - 5510
 - 5520
 - 5530
 - 5540
 - 5550
 - 5560
 - 5570
 - 5580
 - 5590
 - 5600
 - 5610
 - 5620
 - 5630
 - 5640
 - 5650
 - 5660
 - 5670
 - 5680
 - 5690
 - 5700
 - 5710
 - 5720
 - 5730
 - 5740
 - 5750
 - 5760
 - 5770
 - 5780
 - 5790
 - 5800
 - 5810
 - 5820
 - 5830
 - 5840
 - 5850
 - 5860
 - 5870
 - 5880
 - 5890
 - 5900
 - 5910
 - 5920
 - 5930
 - 5940
 - 5950
 - 5960
 - 5970
 - 5980
 - 5990
 - 6000
 - 6010
 - 6020
 - 6030
 - 6040
 - 6050
 - 6060
 - 6070
 - 6080
 - 6090
 - 6100
 - 6110
 - 6120
 - 6130
 - 6140
 - 6150
 - 6160
 - 6170
 - 6180
 - 6190
 - 6200
 - 6210
 - 6220
 - 6230
 - 6240
 - 6250
 - 6260
 - 6270
 - 6280
 - 6290
 - 6300
 - 6310
 - 6320
 - 6330
 - 6340
 - 6350
 - 6360
 - 6370
 - 6380
 - 6390
 - 6400
 - 6410
 - 6420
 - 6430
 - 6440
 - 6450
 - 6460
 - 6470
 - 6480
 - 6490
 - 6500
 - 6510
 - 6520
 - 6530
 - 6540
 - 6550
 - 6560
- 5468 TRANS FM ACTIVE TO SLUG
- 5547 TRANSFER ACTIVE TO UPRIGHTS
- 5554 TRANSFER COMPLETE
- 5555 SWEEP
- 5578 MUD IN 10.35 / 49
- 5645 MUD IN 10.35 / 50
- 5678 SWEEP
- 5702 MUD IN 10.35 / 51
- 5740 MUD IN 10.4 / 52
- 5745 SWEEP
- 5779 MUD IN 10.4 / 51
- 5814 MUD IN 10.45 / 50
- 5847 SWEEP
- 5859 MUD IN 10.5 / 52
- 5963 TRANSFER UPRIGHTS TO SLUG
- 6036 MUD IN 10.55 / 54
- 6051 SWEEP
- 6113 SURVEY
- 6140 PUMP SWEEP
- 6159 MUD IN 10.6 / 53
- 6207 PUMP SWEEP
- 6208 SURVEY
- 6242 MUD IN 10.65 / 57
- 6299 MUD IN 10.65 / 58
- 6299 SURVEY
- 6305 PUMP SWEEP
- 6337 TRANS FM ACTIVE TO SLUG
- 6394 MUD IN 10.7 / 56
- 6394 SURVEY
- 6397 PUMP SWEEP
- 6450 BOS ONLINE
- 6456 MUD IN 10.75 / 57
- 6487 SURVEY
- 6489 PUMP SWEEP
- 6490 BOS OFFLINE
- 6520 MUD IN 10.8 / 57
- 6582 RIG SERVICE



TOTAL DEPTH = 7490'

FGS RELEASED: 2/9/2015