



Well Name: GM 522-28  
Surface Location: GM 323-28 Pad  
North American Datum 1983 , US State Plane 1983 , Colorado Central Zone  
Ground Elevation: 5476.00  
Northing 1614775.00 Easting 2262153.20 Latitude 39.492180 Longitude -108.114838 Slot 2A09  
KELLY BUSHING @ 5500.00usft (H&P 318 (24' RKB) mab)

+N/-S  
0.00

+E/-W  
0.00

Northing  
1614775.00

Easting  
2262153.20

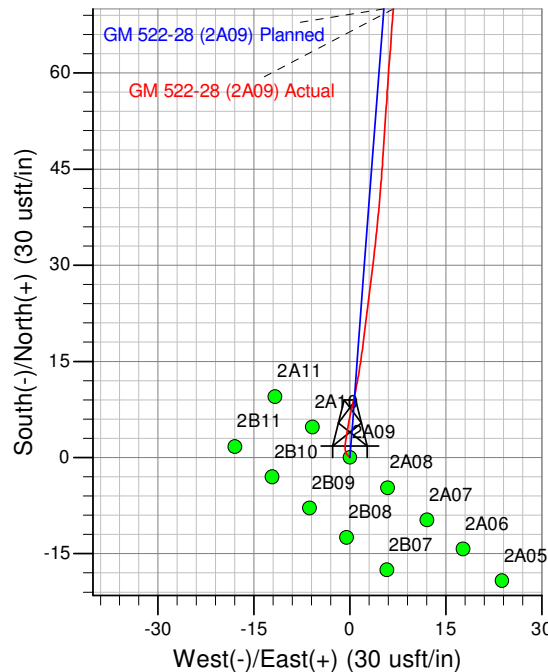
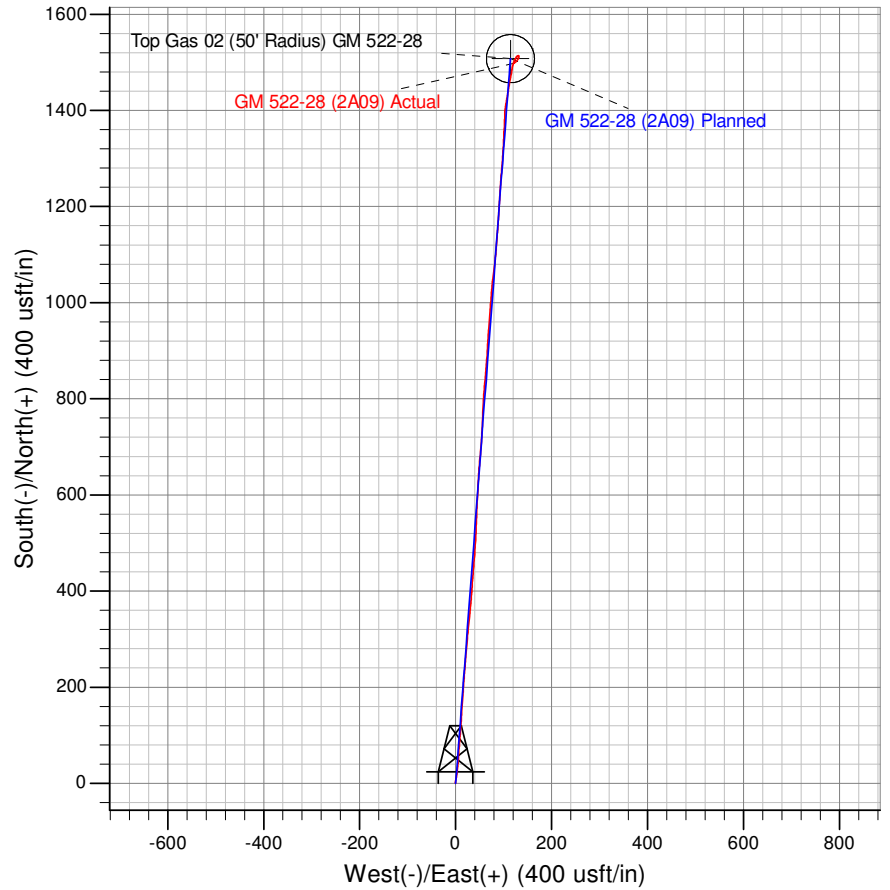
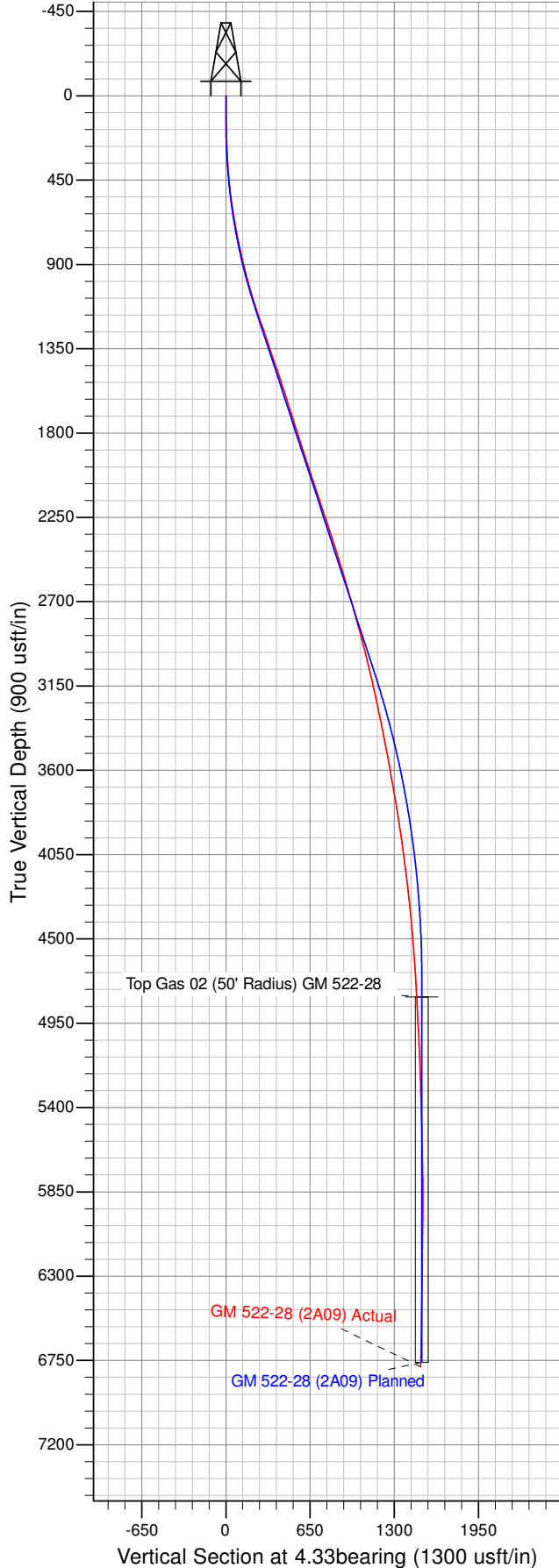
Latitude  
39.492180

Longitude  
-108.114838

Slot  
2A09

#### ANNOTATIONS

TVD	MD	Inc	Azi	+N/-S	+E/-W	Vsect	Departure	Annotation
140.00	140.00	0.00	0.00	0.00	0.00	0.00	0.00	Start Build 2.50
1119.47	1152.04	25.30	4.33	219.22	16.59	219.85	219.85	Hold 25.30° Inc. 4.33°
3077.55	3317.88	25.30	4.33	1142.20	86.42	1145.47	1145.47	Start Drop -1.50°/100'
4710.00	5004.62	0.00	0.00	1507.57	114.07	1511.88	1511.88	Vertical
4810.00	5104.62	0.00	0.00	1507.57	114.07	1511.88	1511.88	Top Gas
6760.00	7054.62	0.00	0.00	1507.57	114.07	1511.88	1511.88	TD at 7054.62



Azimuths to True North  
Magnetic North: 9.94°  
Magnetic Field  
Strength: 51873.4snT  
Dip Angle: 65.62°  
Date: 1/21/2015  
Model: IGRF2010

Project: GV 28-06S-096W  
Site: GM 323-28 Pad  
Well: GM 522-28  
Design #1 28Apr14 mab