

BONANZA CREEK ENERGY INC.

WELD COUNTY, COLORADO (NAD 83)

SE SW SEC. 27 T5N R63W 6th P.M.

NORTH PLATTE P31-T34-34HNB

ORIGINAL WELLBORE

23 April, 2015

Plan: PROPOSAL #2



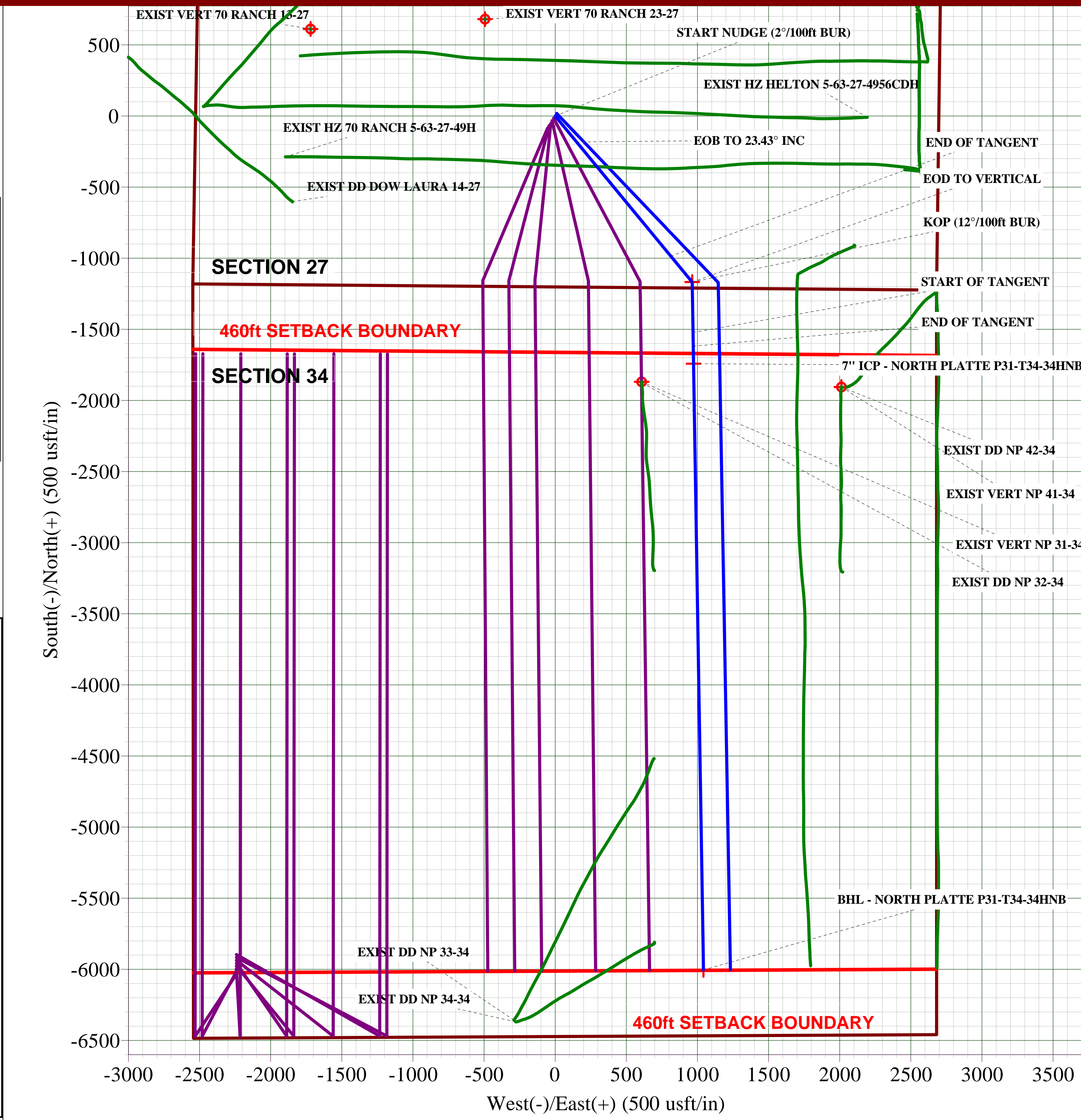
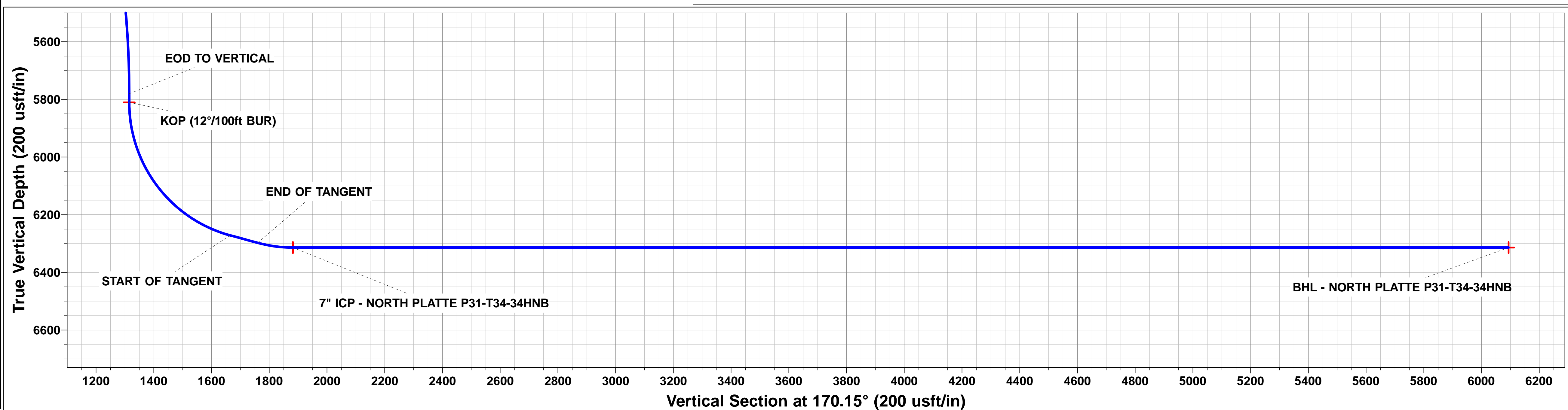
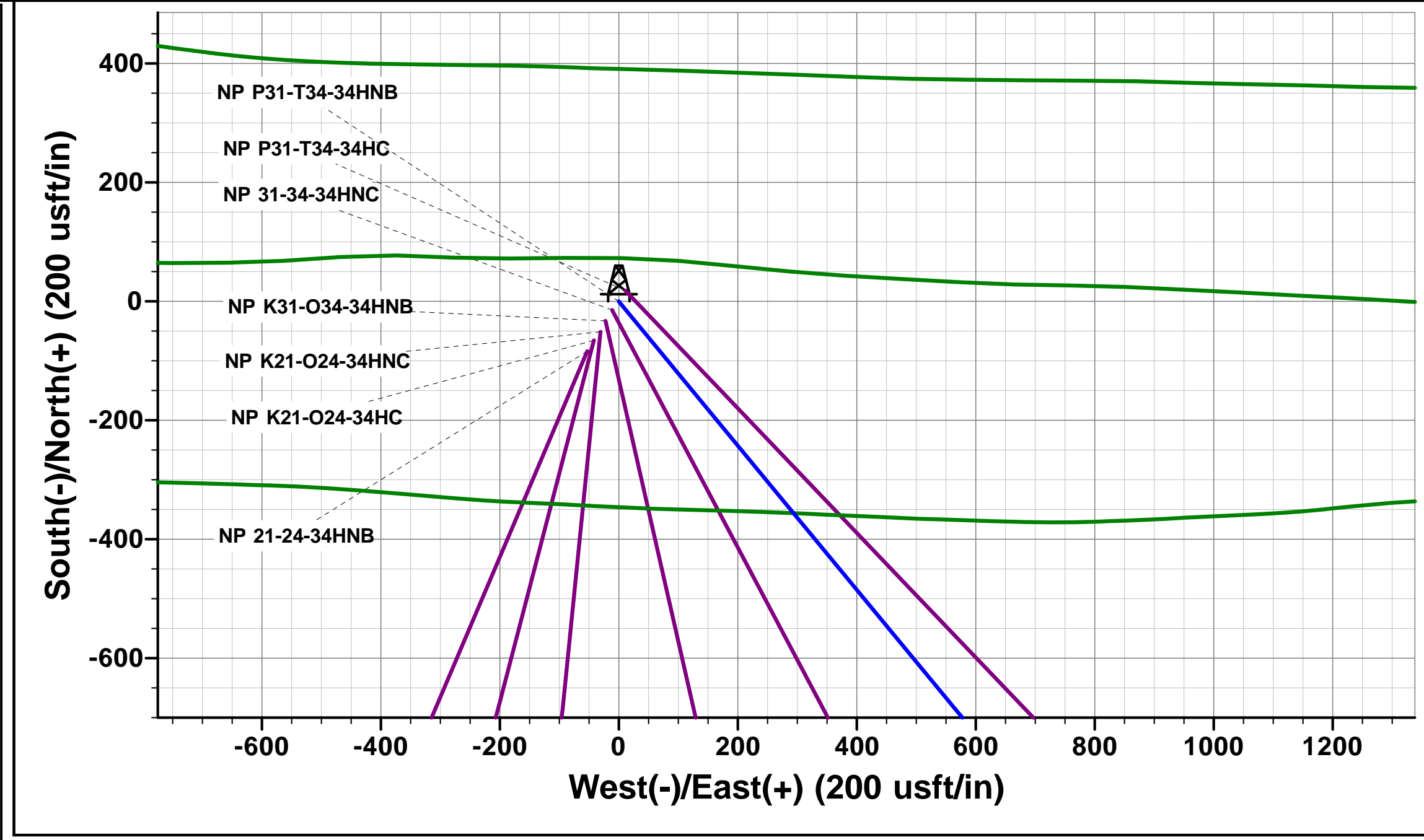
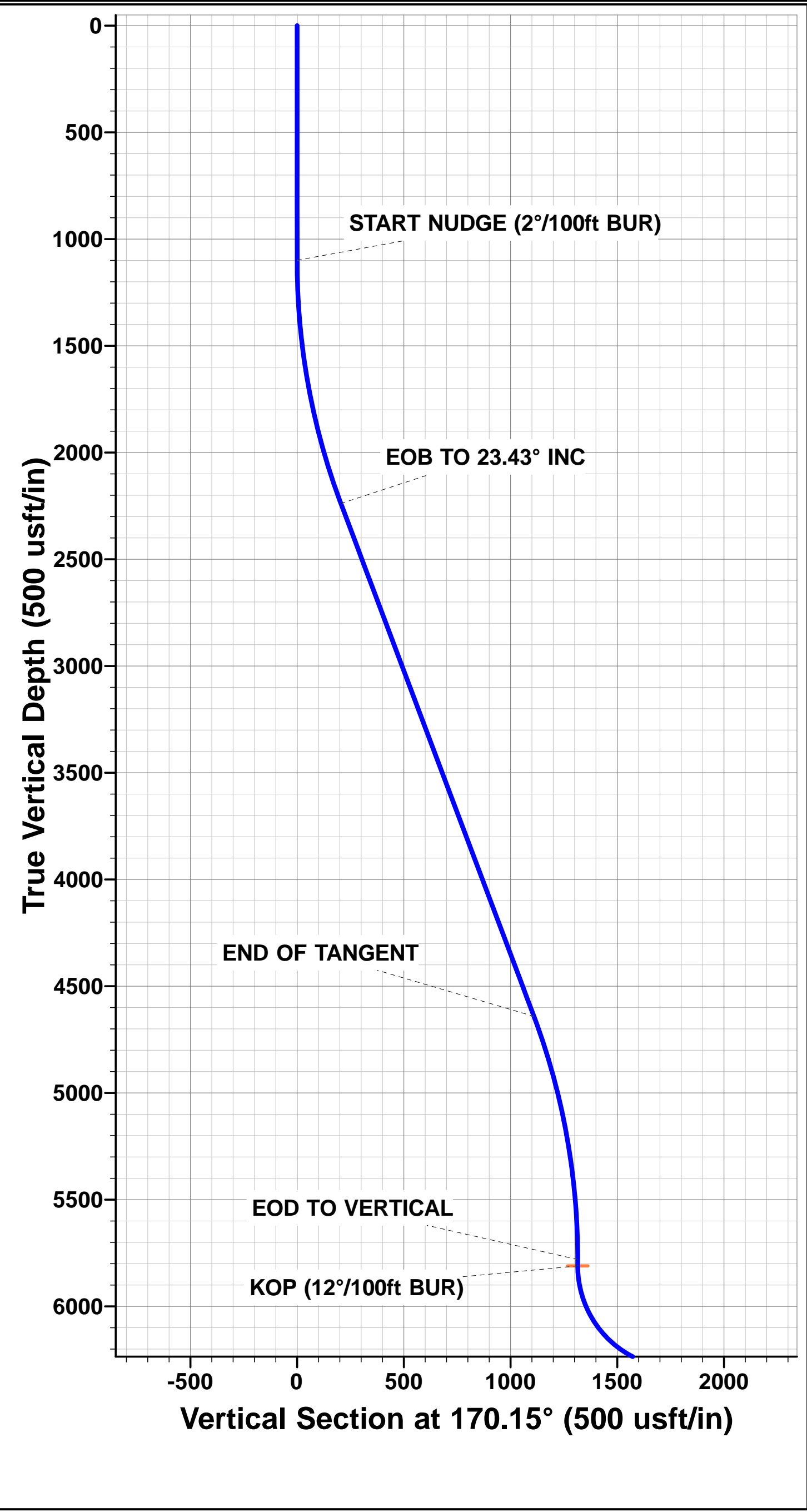


Project: WELD COUNTY, COLORADO (NAD 83)
Site: SE SW SEC. 27 T5N R63W 6th P.M.
Well: NORTH PLATTE P31-T34-34HNB
Wellbore: ORIGINAL WELLBORE
Design: PROPOSAL #2

ANNOTATIONS									
TVD	MD	Inc	Azi	+N/-S	+E/-W	VSec	Dep	Annotation	
1100.0	1100.0	0.00	0.00	0.0	0.0	0.0	0.0	START NUDGE (2°/100ft BUR)	
2239.0	2271.4	23.43	140.47	-182.2	150.3	205.2	236.2	EOB TO 23.43° INC	
4641.7	4889.9	23.43	140.47	-985.2	812.9	1109.8	1277.3	END OF TANGENT	
5780.7	6061.3	0.00	0.00	-1167.4	963.2	1315.0	1513.5	EOD TO VERTICAL	
5810.7	6091.3	0.00	0.00	-1167.4	963.2	1315.0	1513.5	KOP (12°/100ft BUR)	
6271.9	6716.3	75.00	179.06	-1521.2	969.0	1664.6	1867.4	START OF TANGENT	
6297.8	6816.3	75.00	179.06	-1617.8	970.6	1760.0	1963.9	END OF TANGENT	
6314.0	6941.3	90.00	179.06	-1741.4	972.6	1882.1	2087.5	7" ICP - NORTH PLATTE P31-T34-34HNB	
6314.0	11204.3	90.00	179.06	-6003.8	1042.4	6093.6	6350.5	BHL - NORTH PLATTE P31-T34-34HNB	

PROPOSED LOCAL COORDINATES:	
SHL: 1205ft FSL & 2502ft FWL Sec 27	
7" ICP : 531ft FNL & 1709ft FEL Sec 34	
BHL: 470ft FSL & 1639ft FEL Sec 34	

WELLBORE TARGET DETAILS (LAT/LONG)					
Name	TVD	+N/-S	+E/-W	Latitude	Longitude
KOP - NORTH PLATTE P31-T34-34HNB	5810.7	-1167.4	963.2	40.363315	-104.418834
7" ICP - NORTH PLATTE P31-T34-34HNB	6314.0	-1741.4	972.6	40.361740	-104.418800
BHL - NORTH PLATTE P31-T34-34HNB	6314.0	-6003.8	1042.4	40.350040	-104.418550



Planning Report



Database:	EDM 5000.1 Single User Db	Local Co-ordinate Reference:	Well NORTH PLATTE P31-T34-34HNB
Company:	BONANZA CREEK ENERGY INC.	TVD Reference:	KB-EST @ 4559.0usft (Original Well Elev)
Project:	WELD COUNTY, COLORADO (NAD 83)	MD Reference:	KB-EST @ 4559.0usft (Original Well Elev)
Site:	SE SW SEC. 27 T5N R63W 6th P.M.	North Reference:	True
Well:	NORTH PLATTE P31-T34-34HNB	Survey Calculation Method:	Minimum Curvature
Wellbore:	ORIGINAL WELLBORE		
Design:	PROPOSAL #2		

Project	WELD COUNTY, COLORADO (NAD 83)		
Map System:	US State Plane 1983	System Datum:	Mean Sea Level
Geo Datum:	North American Datum 1983		
Map Zone:	Colorado Northern Zone		Using geodetic scale factor

Site	SE SW SEC. 27 T5N R63W 6th P.M.		
Site Position:		Northing:	1,378,104.19 usft
From:	Lat/Long	Easting:	3,300,242.31 usft
Position Uncertainty:	0.0 usft	Slot Radius:	1.10000ft
		Latitude:	40.366290
		Longitude:	-104.422480
		Grid Convergence:	0.70 °

Well	NORTH PLATTE P31-T34-34HNB		
Well Position	+N/-S	83.8 usft	Northing:
	+E/-W	52.9 usft	Easting:
Position Uncertainty	0.0 usft		Wellhead Elevation:
			Latitude:
			Longitude:
			Ground Level:

Wellbore	ORIGINAL WELLBORE				
Magnetics	Model Name	Sample Date	Declination (°)	Dip Angle (°)	Field Strength (nT)
	IGRF2015	23/04/2015	8.25	66.94	52,659

Design	PROPOSAL #2			
Audit Notes:				
Version:	Phase:	PROTOTYPE	Tie On Depth:	0.0
Vertical Section:	Depth From (TVD) (usft)	+N/-S (usft)	+E/-W (usft)	Direction (°)
	6,314.0	0.0	0.0	170.15

Plan Sections											
MD (usft)	Inc (°)	Azi (°)	Vertical Depth	SS (usft)	+N/-S (usft)	+E/-W (usft)	Dogleg Rate (°/100usf)	Build Rate (°/100usf)	Turn Rate (°/100usf)	TFO (°)	Target
0.0	0.00	0.00	0.0	-4,559.0	0.0	0.0	0.00	0.00	0.00	0.00	
1,100.0	0.00	0.00	1,100.0	-3,459.0	0.0	0.0	0.00	0.00	0.00	0.00	
2,271.4	23.43	140.47	2,239.0	-2,320.0	-182.2	150.3	2.00	2.00	0.00	140.47	
4,889.9	23.43	140.47	4,641.7	82.7	-985.2	812.9	0.00	0.00	0.00	0.00	
6,061.3	0.00	0.00	5,780.7	1,221.7	-1,167.4	963.2	2.00	-2.00	0.00	180.00	
6,091.3	0.00	0.00	5,810.7	1,251.7	-1,167.4	963.2	0.00	0.00	0.00	0.00	KOP - NORTH PLA
6,716.3	75.00	179.06	6,271.9	1,712.9	-1,521.2	969.0	12.00	12.00	0.00	179.06	
6,816.3	75.00	179.06	6,297.8	1,738.8	-1,617.8	970.6	0.00	0.00	0.00	0.00	
6,941.3	90.00	179.06	6,314.0	1,755.0	-1,741.4	972.6	12.00	12.00	0.00	0.00	
11,204.3	90.00	179.06	6,314.0	1,755.0	-6,003.8	1,042.4	0.00	0.00	0.00	67.70	BHL - NORTH PLA

Planning Report



Database:	EDM 5000.1 Single User Db	Local Co-ordinate Reference:	Well NORTH PLATTE P31-T34-34HNB
Company:	BONANZA CREEK ENERGY INC.	TVD Reference:	KB-EST @ 4559.0usft (Original Well Elev)
Project:	WELD COUNTY, COLORADO (NAD 83)	MD Reference:	KB-EST @ 4559.0usft (Original Well Elev)
Site:	SE SW SEC. 27 T5N R63W 6th P.M.	North Reference:	True
Well:	NORTH PLATTE P31-T34-34HNB	Survey Calculation Method:	Minimum Curvature
Wellbore:	ORIGINAL WELLBORE		
Design:	PROPOSAL #2		

Planned Survey

MD (usft)	Inc (°)	Azi (°)	TVD (usft)	SS (usft)	+N/-S (usft)	+E/-W (usft)	Vertical Section (usft)	Dogleg Rate (°/100usft)	Build Rate (°/100usft)	Turn Rate (°/100usft)
0.0	0.00	0.00	0.0	4,559.00	0.0	0.0	0.0	0.00	0.00	0.00
100.0	0.00	0.00	100.0	4,459.00	0.0	0.0	0.0	0.00	0.00	0.00
200.0	0.00	0.00	200.0	4,359.00	0.0	0.0	0.0	0.00	0.00	0.00
300.0	0.00	0.00	300.0	4,259.00	0.0	0.0	0.0	0.00	0.00	0.00
400.0	0.00	0.00	400.0	4,159.00	0.0	0.0	0.0	0.00	0.00	0.00
500.0	0.00	0.00	500.0	4,059.00	0.0	0.0	0.0	0.00	0.00	0.00
600.0	0.00	0.00	600.0	3,959.00	0.0	0.0	0.0	0.00	0.00	0.00
700.0	0.00	0.00	700.0	3,859.00	0.0	0.0	0.0	0.00	0.00	0.00
800.0	0.00	0.00	800.0	3,759.00	0.0	0.0	0.0	0.00	0.00	0.00
900.0	0.00	0.00	900.0	3,659.00	0.0	0.0	0.0	0.00	0.00	0.00
1,000.0	0.00	0.00	1,000.0	3,559.00	0.0	0.0	0.0	0.00	0.00	0.00
START NUDGE (2°/100ft BUR)										
1,100.0	0.00	0.00	1,100.0	3,459.00	0.0	0.0	0.0	0.00	0.00	0.00
1,200.0	2.00	140.47	1,200.0	3,359.02	-1.3	1.1	1.5	2.00	2.00	0.00
1,300.0	4.00	140.47	1,299.8	3,259.16	-5.4	4.4	6.1	2.00	2.00	0.00
1,400.0	6.00	140.47	1,399.5	3,159.55	-12.1	10.0	13.6	2.00	2.00	0.00
1,500.0	8.00	140.47	1,498.7	3,060.30	-21.5	17.7	24.2	2.00	2.00	0.00
1,600.0	10.00	140.47	1,597.5	2,961.53	-33.6	27.7	37.8	2.00	2.00	0.00
1,700.0	12.00	140.47	1,695.6	2,863.38	-48.3	39.8	54.4	2.00	2.00	0.00
1,800.0	14.00	140.47	1,793.1	2,765.94	-65.6	54.2	73.9	2.00	2.00	0.00
1,900.0	16.00	140.47	1,889.6	2,669.36	-85.6	70.6	96.4	2.00	2.00	0.00
2,000.0	18.00	140.47	1,985.3	2,573.73	-108.2	89.2	121.8	2.00	2.00	0.00
2,100.0	20.00	140.47	2,079.8	2,479.18	-133.3	110.0	150.1	2.00	2.00	0.00
2,200.0	22.00	140.47	2,173.2	2,385.83	-160.9	132.8	181.2	2.00	2.00	0.00
EOB TO 23.43° INC										
2,271.4	23.43	140.47	2,239.0	2,319.96	-182.2	150.3	205.2	2.00	2.00	0.00
2,300.0	23.43	140.47	2,265.3	2,293.73	-190.9	157.5	215.1	0.00	0.00	0.00
2,400.0	23.43	140.47	2,357.0	2,201.97	-221.6	182.8	249.6	0.00	0.00	0.00
2,500.0	23.43	140.47	2,448.8	2,110.22	-252.3	208.1	284.2	0.00	0.00	0.00
2,600.0	23.43	140.47	2,540.5	2,018.46	-282.9	233.5	318.7	0.00	0.00	0.00
2,700.0	23.43	140.47	2,632.3	1,926.70	-313.6	258.8	353.3	0.00	0.00	0.00
2,800.0	23.43	140.47	2,724.1	1,834.95	-344.3	284.1	387.8	0.00	0.00	0.00
2,900.0	23.43	140.47	2,815.8	1,743.19	-375.0	309.4	422.3	0.00	0.00	0.00
3,000.0	23.43	140.47	2,907.6	1,651.44	-405.6	334.7	456.9	0.00	0.00	0.00
3,100.0	23.43	140.47	2,999.3	1,559.68	-436.3	360.0	491.4	0.00	0.00	0.00
3,200.0	23.43	140.47	3,091.1	1,467.93	-467.0	385.3	526.0	0.00	0.00	0.00
3,300.0	23.43	140.47	3,182.8	1,376.17	-497.6	410.6	560.5	0.00	0.00	0.00
3,400.0	23.43	140.47	3,274.6	1,284.41	-528.3	435.9	595.1	0.00	0.00	0.00
3,500.0	23.43	140.47	3,366.3	1,192.66	-559.0	461.2	629.6	0.00	0.00	0.00
3,600.0	23.43	140.47	3,458.1	1,100.90	-589.6	486.5	664.2	0.00	0.00	0.00
3,700.0	23.43	140.47	3,549.9	1,009.15	-620.3	511.8	698.7	0.00	0.00	0.00
3,800.0	23.43	140.47	3,641.6	917.39	-651.0	537.1	733.3	0.00	0.00	0.00
3,900.0	23.43	140.47	3,733.4	825.63	-681.6	562.4	767.8	0.00	0.00	0.00
4,000.0	23.43	140.47	3,825.1	733.88	-712.3	587.7	802.3	0.00	0.00	0.00
4,100.0	23.43	140.47	3,916.9	642.12	-743.0	613.0	836.9	0.00	0.00	0.00
4,200.0	23.43	140.47	4,008.6	550.37	-773.6	638.3	871.4	0.00	0.00	0.00
4,300.0	23.43	140.47	4,100.4	458.61	-804.3	663.6	906.0	0.00	0.00	0.00
4,400.0	23.43	140.47	4,192.1	366.85	-835.0	688.9	940.5	0.00	0.00	0.00
4,500.0	23.43	140.47	4,283.9	275.10	-865.6	714.2	975.1	0.00	0.00	0.00
4,600.0	23.43	140.47	4,375.7	183.34	-896.3	739.5	1,009.6	0.00	0.00	0.00
4,700.0	23.43	140.47	4,467.4	91.59	-927.0	764.8	1,044.2	0.00	0.00	0.00
4,800.0	23.43	140.47	4,559.2	-0.17	-957.7	790.1	1,078.7	0.00	0.00	0.00

END OF TANGENT

Planning Report



Database:	EDM 5000.1 Single User Db	Local Co-ordinate Reference:	Well NORTH PLATTE P31-T34-34HNB
Company:	BONANZA CREEK ENERGY INC.	TVD Reference:	KB-EST @ 4559.0usft (Original Well Elev)
Project:	WELD COUNTY, COLORADO (NAD 83)	MD Reference:	KB-EST @ 4559.0usft (Original Well Elev)
Site:	SE SW SEC. 27 T5N R63W 6th P.M.	North Reference:	True
Well:	NORTH PLATTE P31-T34-34HNB	Survey Calculation Method:	Minimum Curvature
Wellbore:	ORIGINAL WELLBORE		
Design:	PROPOSAL #2		

Planned Survey										
MD (usft)	Inc (°)	Azi (°)	TVD (usft)	SS (usft)	+N/-S (usft)	+E/-W (usft)	Vertical Section (usft)	Dogleg Rate (°/100usft)	Build Rate (°/100usft)	Turn Rate (°/100usft)
4,889.9	23.43	140.47	4,641.7	-82.66	-985.2	812.9	1,109.8	0.00	0.00	0.00
4,900.0	23.23	140.47	4,650.9	-91.93	-988.3	815.4	1,113.2	2.00	-2.00	0.00
5,000.0	21.23	140.47	4,743.5	-184.50	-1,017.5	839.5	1,146.1	2.00	-2.00	0.00
5,100.0	19.23	140.47	4,837.3	-278.33	-1,044.2	861.5	1,176.1	2.00	-2.00	0.00
5,200.0	17.23	140.47	4,932.3	-373.30	-1,068.3	881.4	1,203.3	2.00	-2.00	0.00
5,300.0	15.23	140.47	5,028.3	-469.32	-1,089.8	899.2	1,227.6	2.00	-2.00	0.00
5,400.0	13.23	140.47	5,125.2	-566.24	-1,108.8	914.8	1,248.9	2.00	-2.00	0.00
5,500.0	11.23	140.47	5,223.0	-663.97	-1,125.1	928.3	1,267.3	2.00	-2.00	0.00
5,600.0	9.23	140.47	5,321.4	-762.38	-1,138.8	939.6	1,282.8	2.00	-2.00	0.00
5,700.0	7.23	140.47	5,420.3	-861.34	-1,149.8	948.7	1,295.2	2.00	-2.00	0.00
5,800.0	5.23	140.47	5,519.7	-960.75	-1,158.2	955.6	1,304.6	2.00	-2.00	0.00
5,900.0	3.23	140.47	5,619.5	-1,060.47	-1,163.9	960.3	1,311.0	2.00	-2.00	0.00
6,000.0	1.23	140.47	5,719.4	-1,160.39	-1,166.9	962.8	1,314.4	2.00	-2.00	0.00
EOD TO VERTICAL										
6,061.3	0.00	0.00	5,780.7	-1,221.70	-1,167.4	963.2	1,315.0	2.00	-2.00	0.00
KOP (12°/100ft BUR)										
6,091.3	0.00	0.00	5,810.7	-1,251.70	-1,167.4	963.2	1,315.0	0.00	0.00	0.00
6,100.0	1.04	179.06	5,819.4	-1,260.39	-1,167.5	963.2	1,315.0	12.00	12.00	0.00
6,200.0	13.04	179.06	5,918.4	-1,359.45	-1,179.7	963.4	1,327.1	12.00	12.00	0.00
6,300.0	25.04	179.06	6,012.8	-1,453.80	-1,212.3	963.9	1,359.3	12.00	12.00	0.00
6,400.0	37.04	179.06	6,098.3	-1,539.33	-1,263.7	964.8	1,410.2	12.00	12.00	0.00
6,500.0	49.04	179.06	6,171.3	-1,612.28	-1,331.9	965.9	1,477.5	12.00	12.00	0.00
6,600.0	61.04	179.06	6,228.5	-1,669.47	-1,413.7	967.2	1,558.3	12.00	12.00	0.00
6,700.0	73.04	179.06	6,267.4	-1,708.40	-1,505.6	968.7	1,649.1	12.00	12.00	0.00
START OF TANGENT										
6,716.3	75.00	179.06	6,271.9	-1,712.90	-1,521.2	969.0	1,664.6	12.00	12.00	0.00
6,800.0	75.00	179.06	6,293.6	-1,734.56	-1,602.1	970.3	1,744.4	0.00	0.00	0.00
END OF TANGENT										
6,816.3	75.00	179.06	6,297.8	-1,738.78	-1,617.8	970.6	1,760.0	0.00	0.00	0.00
6,900.0	85.04	179.06	6,312.3	-1,753.26	-1,700.1	971.9	1,841.3	12.00	12.00	0.00
7" ICP - NORTH PLATTE P31-T34-34HNB										
6,941.3	90.00	179.06	6,314.0	-1,755.05	-1,741.4	972.6	1,882.1	12.00	12.00	0.00
7,000.0	90.00	179.06	6,314.0	-1,755.05	-1,800.1	973.6	1,940.1	0.00	0.00	0.00
7,100.0	90.00	179.06	6,314.0	-1,755.05	-1,900.0	975.2	2,038.9	0.00	0.00	0.00
7,200.0	90.00	179.06	6,314.0	-1,755.05	-2,000.0	976.9	2,137.7	0.00	0.00	0.00
7,300.0	90.00	179.06	6,314.0	-1,755.05	-2,100.0	978.5	2,236.5	0.00	0.00	0.00
7,400.0	90.00	179.06	6,314.0	-1,755.05	-2,200.0	980.1	2,335.2	0.00	0.00	0.00
7,500.0	90.00	179.06	6,314.0	-1,755.05	-2,300.0	981.8	2,434.0	0.00	0.00	0.00
7,600.0	90.00	179.06	6,314.0	-1,755.05	-2,400.0	983.4	2,532.8	0.00	0.00	0.00
7,700.0	90.00	179.06	6,314.0	-1,755.05	-2,500.0	985.1	2,631.6	0.00	0.00	0.00
7,800.0	90.00	179.06	6,314.0	-1,755.04	-2,600.0	986.7	2,730.4	0.00	0.00	0.00
7,900.0	90.00	179.06	6,314.0	-1,755.04	-2,699.9	988.3	2,829.2	0.00	0.00	0.00
8,000.0	90.00	179.06	6,314.0	-1,755.04	-2,799.9	990.0	2,928.0	0.00	0.00	0.00
8,100.0	90.00	179.06	6,314.0	-1,755.04	-2,899.9	991.6	3,026.8	0.00	0.00	0.00
8,200.0	90.00	179.06	6,314.0	-1,755.04	-2,999.9	993.3	3,125.6	0.00	0.00	0.00
8,300.0	90.00	179.06	6,314.0	-1,755.04	-3,099.9	994.9	3,224.4	0.00	0.00	0.00
8,400.0	90.00	179.06	6,314.0	-1,755.04	-3,199.9	996.5	3,323.2	0.00	0.00	0.00
8,500.0	90.00	179.06	6,314.0	-1,755.04	-3,299.9	998.2	3,422.0	0.00	0.00	0.00
8,600.0	90.00	179.06	6,314.0	-1,755.04	-3,399.8	999.8	3,520.8	0.00	0.00	0.00
8,700.0	90.00	179.06	6,314.0	-1,755.04	-3,499.8	1,001.5	3,619.6	0.00	0.00	0.00
8,800.0	90.00	179.06	6,314.0	-1,755.04	-3,599.8	1,003.1	3,718.3	0.00	0.00	0.00
8,900.0	90.00	179.06	6,314.0	-1,755.04	-3,699.8	1,004.7	3,817.1	0.00	0.00	0.00
9,000.0	90.00	179.06	6,314.0	-1,755.04	-3,799.8	1,006.4	3,915.9	0.00	0.00	0.00
9,100.0	90.00	179.06	6,314.0	-1,755.03	-3,899.8	1,008.0	4,014.7	0.00	0.00	0.00

Planning Report



Database:	EDM 5000.1 Single User Db	Local Co-ordinate Reference:	Well NORTH PLATTE P31-T34-34HNB
Company:	BONANZA CREEK ENERGY INC.	TVD Reference:	KB-EST @ 4559.0usft (Original Well Elev)
Project:	WELD COUNTY, COLORADO (NAD 83)	MD Reference:	KB-EST @ 4559.0usft (Original Well Elev)
Site:	SE SW SEC. 27 T5N R63W 6th P.M.	North Reference:	True
Well:	NORTH PLATTE P31-T34-34HNB	Survey Calculation Method:	Minimum Curvature
Wellbore:	ORIGINAL WELLBORE		
Design:	PROPOSAL #2		

Planned Survey										
MD (usft)	Inc (°)	Azi (°)	TVD (usft)	SS (usft)	+N/-S (usft)	+E/-W (usft)	Vertical Section (usft)	Dogleg Rate (°/100usft)	Build Rate (°/100usft)	Turn Rate (°/100usft)
9,200.0	90.00	179.06	6,314.0	-1,755.03	-3,999.8	1,009.6	4,113.5	0.00	0.00	0.00
9,300.0	90.00	179.06	6,314.0	-1,755.03	-4,099.7	1,011.3	4,212.3	0.00	0.00	0.00
9,400.0	90.00	179.06	6,314.0	-1,755.03	-4,199.7	1,012.9	4,311.1	0.00	0.00	0.00
9,500.0	90.00	179.06	6,314.0	-1,755.03	-4,299.7	1,014.6	4,409.9	0.00	0.00	0.00
9,600.0	90.00	179.06	6,314.0	-1,755.03	-4,399.7	1,016.2	4,508.7	0.00	0.00	0.00
9,700.0	90.00	179.06	6,314.0	-1,755.03	-4,499.7	1,017.8	4,607.5	0.00	0.00	0.00
9,800.0	90.00	179.06	6,314.0	-1,755.03	-4,599.7	1,019.5	4,706.3	0.00	0.00	0.00
9,900.0	90.00	179.06	6,314.0	-1,755.02	-4,699.7	1,021.1	4,805.1	0.00	0.00	0.00
10,000.0	90.00	179.06	6,314.0	-1,755.02	-4,799.7	1,022.7	4,903.9	0.00	0.00	0.00
10,100.0	90.00	179.06	6,314.0	-1,755.02	-4,899.6	1,024.4	5,002.7	0.00	0.00	0.00
10,200.0	90.00	179.06	6,314.0	-1,755.02	-4,999.6	1,026.0	5,101.4	0.00	0.00	0.00
10,300.0	90.00	179.06	6,314.0	-1,755.02	-5,099.6	1,027.6	5,200.2	0.00	0.00	0.00
10,400.0	90.00	179.06	6,314.0	-1,755.02	-5,199.6	1,029.3	5,299.0	0.00	0.00	0.00
10,500.0	90.00	179.06	6,314.0	-1,755.01	-5,299.6	1,030.9	5,397.8	0.00	0.00	0.00
10,600.0	90.00	179.06	6,314.0	-1,755.01	-5,399.6	1,032.6	5,496.6	0.00	0.00	0.00
10,700.0	90.00	179.06	6,314.0	-1,755.01	-5,499.6	1,034.2	5,595.4	0.00	0.00	0.00
10,800.0	90.00	179.06	6,314.0	-1,755.01	-5,599.5	1,035.8	5,694.2	0.00	0.00	0.00
10,900.0	90.00	179.06	6,314.0	-1,755.01	-5,699.5	1,037.5	5,793.0	0.00	0.00	0.00
11,000.0	90.00	179.06	6,314.0	-1,755.00	-5,799.5	1,039.1	5,891.8	0.00	0.00	0.00
11,100.0	90.00	179.06	6,314.0	-1,755.00	-5,899.5	1,040.7	5,990.6	0.00	0.00	0.00
11,200.0	90.00	179.06	6,314.0	-1,755.00	-5,999.5	1,042.4	6,089.4	0.00	0.00	0.00
BHL - NORTH PLATTE P31-T34-34HNB										
11,204.3	90.00	179.06	6,314.0	-1,755.00	-6,003.8	1,042.4	6,093.6	0.00	0.00	0.00

Plan Annotations				
MD (usft)	TVD (usft)	Local Coordinates		Comment
		+N/-S (usft)	+E/-W (usft)	
1,100.0	1,100.0	0.0	0.0	START NUDGE (2°/100ft BUR)
2,271.4	2,239.0	-182.2	150.3	EOB TO 23.43° INC
4,889.9	4,641.7	-985.2	812.9	END OF TANGENT
6,061.3	5,780.7	-1,167.4	963.2	EOD TO VERTICAL
6,091.3	5,810.7	-1,167.4	963.2	KOP (12°/100ft BUR)
6,716.3	6,271.9	-1,521.2	969.0	START OF TANGENT
6,816.3	6,297.8	-1,617.8	970.6	END OF TANGENT
6,941.3	6,314.0	-1,741.4	972.6	7" ICP - NORTH PLATTE P31-T34-34HNB
11,204.3	6,314.0	-6,003.8	1,042.4	BHL - NORTH PLATTE P31-T34-34HNB