

BONANZA CREEK ENERGY INC.

WELD COUNTY, COLORADO (NAD 83)

SE SW SEC. 27 T5N R63W 6th P.M.

NORTH PLATTE 31-34-34HNC

ORIGINAL WELLBORE

12 May, 2015

Plan: PROPOSAL #4





Project: WELD COUNTY, COLORADO (NAD 83)
Site: SE SW SEC. 27 T5N R63W 6th P.M.
Well: NORTH PLATTE 31-34-34HNC
Wellbore: ORIGINAL WELLBORE
Design: PROPOSAL #4

ANNOTATIONS

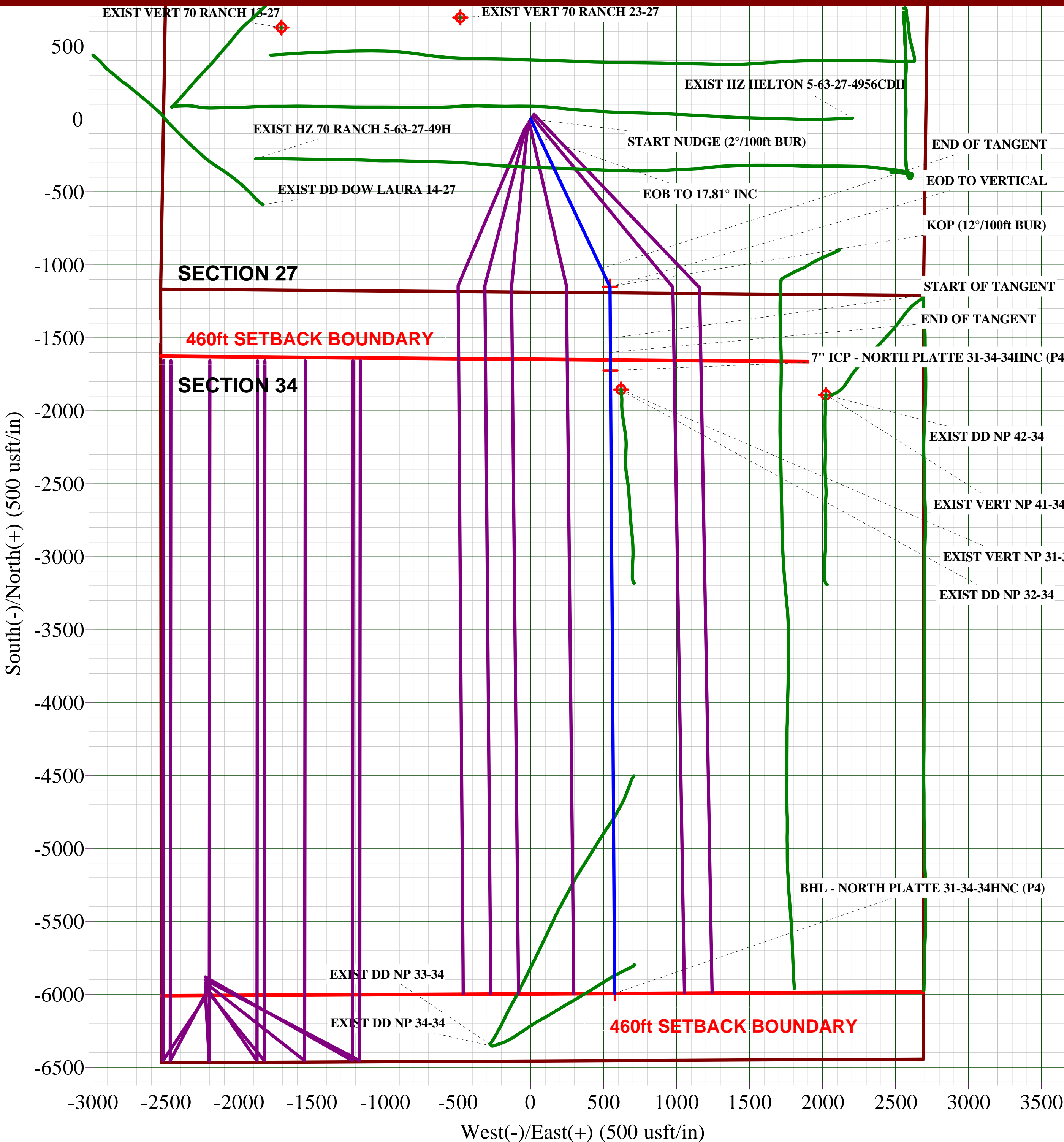
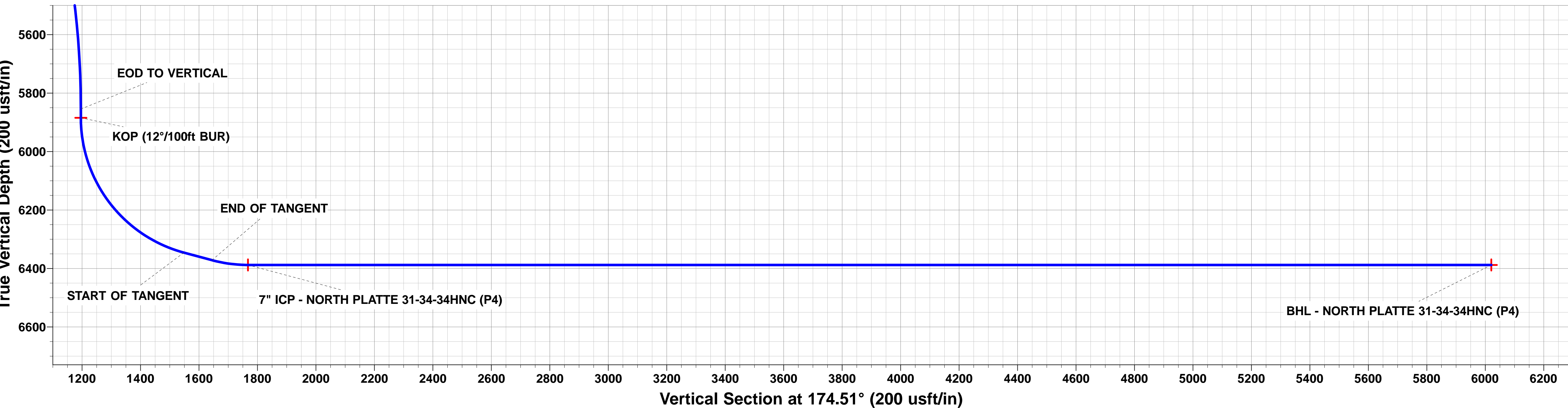
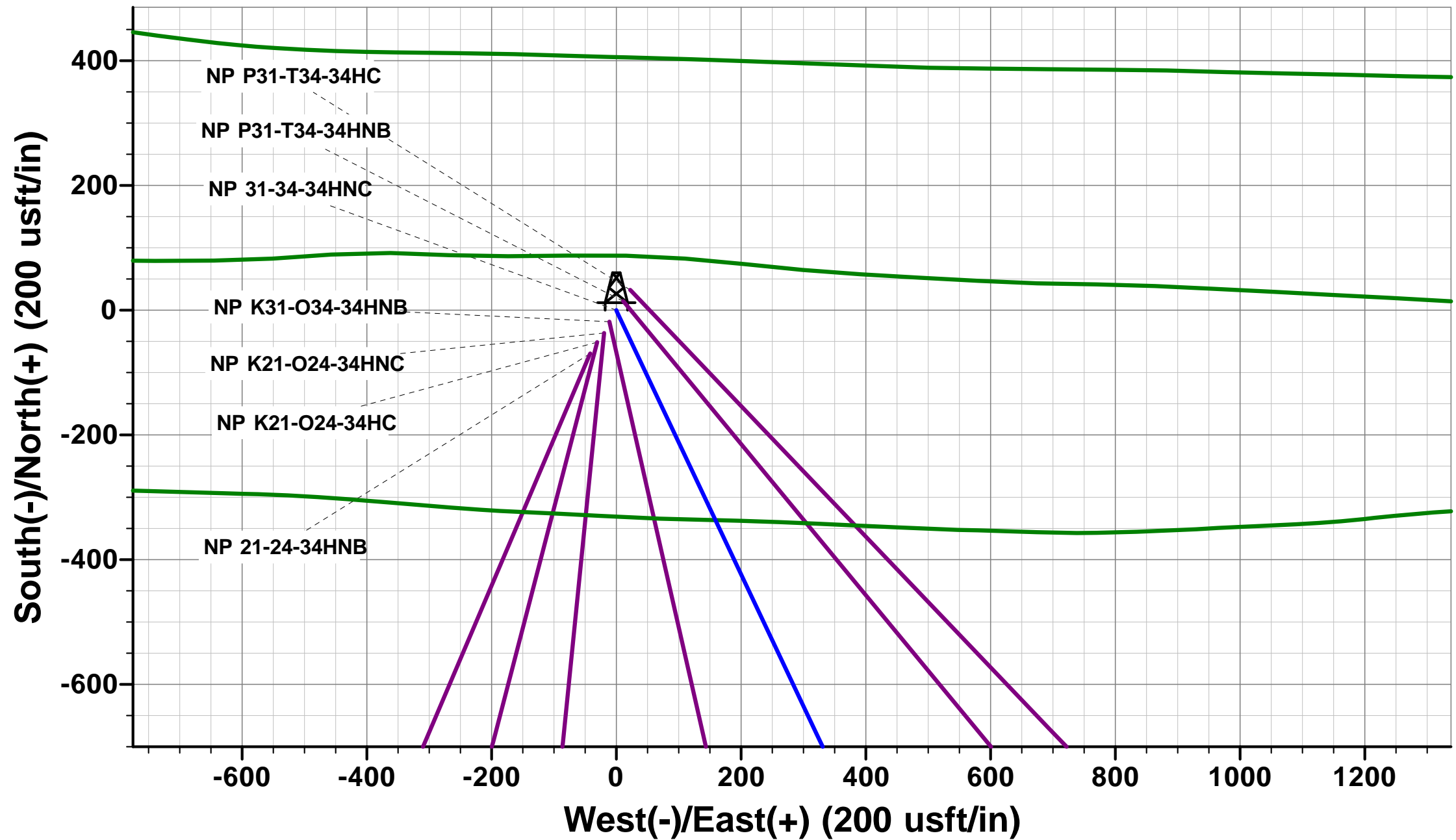
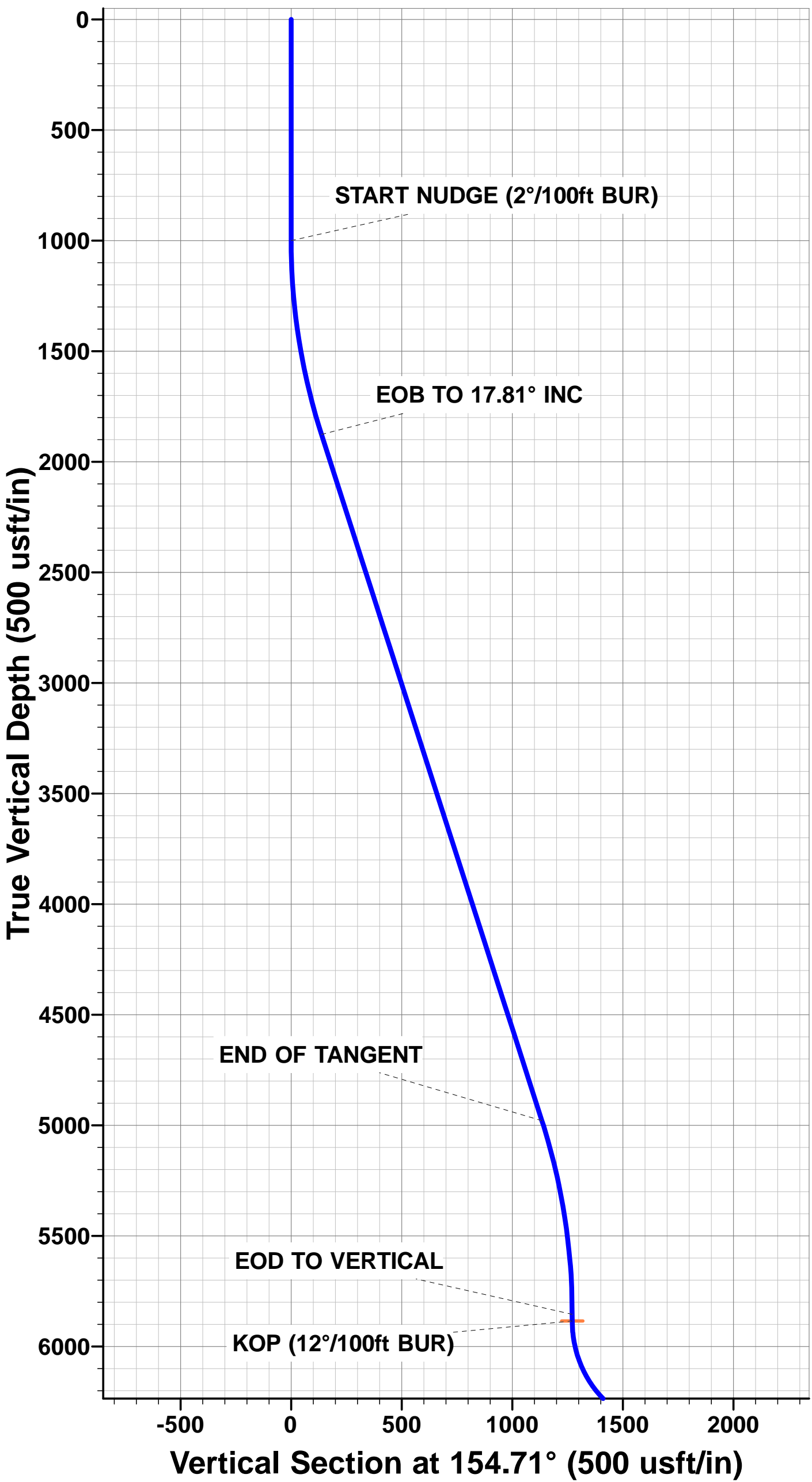
TVD	MD	Inc	Azi	+N/-S	+E/-W	VSec	Dep	Annotation
1000.0	1000.0	0.00	0.00	0.0	0.0	0.0	0.0	START NUDGE (2°/100ft BUR)
1876.1	1890.4	17.81	154.71	-124.1	58.6	129.1	137.3	EOB TO 17.81° INC
4978.6	5149.0	17.81	154.71	-1025.1	484.5	1066.7	1133.8	END OF TANGENT
5854.7	6039.4	0.00	0.00	-1149.2	543.1	1195.9	1271.1	EOD TO VERTICAL
5884.7	6069.4	0.00	0.00	-1149.2	543.1	1195.9	1271.1	KOP (12°/100ft BUR)
6345.9	6694.4	75.00	179.62	-1503.1	545.4	1548.4	1625.0	START OF TANGENT
6371.8	6794.4	75.00	179.62	-1599.7	546.1	1644.6	1721.6	END OF TANGENT
6388.0	6919.4	90.00	179.62	-1723.3	546.9	1767.7	1845.2	7" ICP - NORTH PLATTE 31-34-34HNC (P4)
6388.0	11189.1	90.00	179.61	-5992.9	575.5	6020.4	6114.8	BHL - NORTH PLATTE 31-34-34HNC (P4)

PROPOSED LOCAL COORDINATES:

SHL: 1188ft FSL & 2492ft FWL Sec 27
7" ICP *NEW* : 531ft FNL & 2145ft FEL Sec 34
BHL *NEW*: 470ft FSL & 2117ft FEL Sec 34

WELLBORE TARGET DETAILS (LAT/LONG)

Name	TVD	+N/-S	+E/-W	Latitude	Longitude
KOP - NORTH PLATTE 31-34-34HNC (P4)	5884.7	-1149.2	543.1	40.363325	-104.420381
7" ICP - NORTH PLATTE 31-34-34HNC (P4)	6388.0	-1723.2	546.9	40.361750	-104.420368
BHL - NORTH PLATTE 31-34-34HNC (P4)	6388.0	-5992.9	575.5	40.350030	-104.420265



Planning Report



Database:	EDM 5000.1 Single User Db	Local Co-ordinate Reference:	Well NORTH PLATTE 31-34-34HNC
Company:	BONANZA CREEK ENERGY INC.	TVD Reference:	KB-EST @ 4558.0usft (Original Well Elev)
Project:	WELD COUNTY, COLORADO (NAD 83)	MD Reference:	KB-EST @ 4558.0usft (Original Well Elev)
Site:	SE SW SEC. 27 T5N R63W 6th P.M.	North Reference:	True
Well:	NORTH PLATTE 31-34-34HNC	Survey Calculation Method:	Minimum Curvature
Wellbore:	ORIGINAL WELLBORE		
Design:	PROPOSAL #4		

Project	WELD COUNTY, COLORADO (NAD 83)		
Map System:	US State Plane 1983	System Datum:	Mean Sea Level
Geo Datum:	North American Datum 1983		
Map Zone:	Colorado Northern Zone		Using geodetic scale factor

Site	SE SW SEC. 27 T5N R63W 6th P.M.		
Site Position:		Northing:	1,378,104.19 usft
From:	Lat/Long	Easting:	3,300,242.31 usft
Position Uncertainty:	0.0 usft	Slot Radius:	1.10000ft
		Latitude:	40.366290
		Longitude:	-104.422480
		Grid Convergence:	0.70 °

Well	NORTH PLATTE 31-34-34HNC		
Well Position	+N/-S	69.2 usft	Northing:
	+E/-W	41.8 usft	Easting:
Position Uncertainty	0.0 usft	Wellhead Elevation:	usft
		Latitude:	40.366480
		Longitude:	-104.422330
		Ground Level:	4,541.0 usft

Wellbore	ORIGINAL WELLBORE				
Magnetics	Model Name	Sample Date	Declination (°)	Dip Angle (°)	Field Strength (nT)
	IGRF2015	23/04/2015	8.25	66.94	52,659

Design	PROPOSAL #4			
Audit Notes:				
Version:	Phase:	PROTOTYPE	Tie On Depth:	0.0
Vertical Section:	Depth From (TVD) (usft)	+N/-S (usft)	+E/-W (usft)	Direction (°)
	6,388.0	0.0	0.0	174.51

Plan Sections											
MD (usft)	Inc (°)	Azi (°)	Vertical Depth	SS (usft)	+N/-S (usft)	+E/-W (usft)	Dogleg Rate (°/100usf)	Build Rate (°/100usf)	Turn Rate (°/100usf)	TFO (°)	Target
0.0	0.00	0.00	0.0	-4,558.0	0.0	0.0	0.00	0.00	0.00	0.00	
1,000.0	0.00	0.00	1,000.0	-3,558.0	0.0	0.0	0.00	0.00	0.00	0.00	
1,890.4	17.81	154.71	1,876.1	-2,681.9	-124.1	58.6	2.00	2.00	0.00	154.71	
5,149.0	17.81	154.71	4,978.6	420.6	-1,025.1	484.5	0.00	0.00	0.00	0.00	
6,039.4	0.00	0.00	5,854.7	1,296.7	-1,149.2	543.1	2.00	-2.00	0.00	180.00	
6,069.4	0.00	0.00	5,884.7	1,326.7	-1,149.2	543.1	0.00	0.00	0.00	0.00	KOP - NORTH PLA
6,694.4	75.00	179.62	6,345.9	1,787.9	-1,503.1	545.4	12.00	12.00	0.00	179.62	
6,794.4	75.00	179.62	6,371.8	1,813.8	-1,599.7	546.1	0.00	0.00	0.00	0.00	
6,919.4	90.00	179.62	6,388.0	1,830.0	-1,723.2	546.9	12.00	12.00	0.00	0.00	
11,189.1	90.00	179.61	6,388.0	1,830.0	-5,992.9	575.5	0.00	0.00	0.00	-80.36	BHL - NORTH PLA

Planning Report



Database:	EDM 5000.1 Single User Db	Local Co-ordinate Reference:	Well NORTH PLATTE 31-34-34HNC
Company:	BONANZA CREEK ENERGY INC.	TVD Reference:	KB-EST @ 4558.0usft (Original Well Elev)
Project:	WELD COUNTY, COLORADO (NAD 83)	MD Reference:	KB-EST @ 4558.0usft (Original Well Elev)
Site:	SE SW SEC. 27 T5N R63W 6th P.M.	North Reference:	True
Well:	NORTH PLATTE 31-34-34HNC	Survey Calculation Method:	Minimum Curvature
Wellbore:	ORIGINAL WELLBORE		
Design:	PROPOSAL #4		

Planned Survey

MD (usft)	Inc (°)	Azi (°)	TVD (usft)	SS (usft)	+N/-S (usft)	+E/-W (usft)	Vertical Section (usft)	Dogleg Rate (°/100usft)	Build Rate (°/100usft)	Turn Rate (°/100usft)
0.0	0.00	0.00	0.0	4,558.00	0.0	0.0	0.0	0.00	0.00	0.00
100.0	0.00	0.00	100.0	4,458.00	0.0	0.0	0.0	0.00	0.00	0.00
200.0	0.00	0.00	200.0	4,358.00	0.0	0.0	0.0	0.00	0.00	0.00
300.0	0.00	0.00	300.0	4,258.00	0.0	0.0	0.0	0.00	0.00	0.00
400.0	0.00	0.00	400.0	4,158.00	0.0	0.0	0.0	0.00	0.00	0.00
500.0	0.00	0.00	500.0	4,058.00	0.0	0.0	0.0	0.00	0.00	0.00
600.0	0.00	0.00	600.0	3,958.00	0.0	0.0	0.0	0.00	0.00	0.00
700.0	0.00	0.00	700.0	3,858.00	0.0	0.0	0.0	0.00	0.00	0.00
800.0	0.00	0.00	800.0	3,758.00	0.0	0.0	0.0	0.00	0.00	0.00
900.0	0.00	0.00	900.0	3,658.00	0.0	0.0	0.0	0.00	0.00	0.00
START NUDGE (2°/100ft BUR)										
1,000.0	0.00	0.00	1,000.0	3,558.00	0.0	0.0	0.0	0.00	0.00	0.00
1,100.0	2.00	154.71	1,100.0	3,458.02	-1.6	0.7	1.6	2.00	2.00	0.00
1,200.0	4.00	154.71	1,199.8	3,358.16	-6.3	3.0	6.6	2.00	2.00	0.00
1,300.0	6.00	154.71	1,299.5	3,258.55	-14.2	6.7	14.8	2.00	2.00	0.00
1,400.0	8.00	154.71	1,398.7	3,159.30	-25.2	11.9	26.2	2.00	2.00	0.00
1,500.0	10.00	154.71	1,497.5	3,060.53	-39.3	18.6	40.9	2.00	2.00	0.00
1,600.0	12.00	154.71	1,595.6	2,962.38	-56.6	26.7	58.9	2.00	2.00	0.00
1,700.0	14.00	154.71	1,693.1	2,864.94	-76.9	36.4	80.1	2.00	2.00	0.00
1,800.0	16.00	154.71	1,789.6	2,768.36	-100.3	47.4	104.4	2.00	2.00	0.00
EOB TO 17.81° INC										
1,890.4	17.81	154.71	1,876.1	2,681.87	-124.1	58.6	129.1	2.00	2.00	0.00
1,900.0	17.81	154.71	1,885.3	2,672.73	-126.8	59.9	131.9	0.00	0.00	0.00
2,000.0	17.81	154.71	1,980.5	2,577.52	-154.4	73.0	160.7	0.00	0.00	0.00
2,100.0	17.81	154.71	2,075.7	2,482.31	-182.1	86.0	189.4	0.00	0.00	0.00
2,200.0	17.81	154.71	2,170.9	2,387.10	-209.7	99.1	218.2	0.00	0.00	0.00
2,300.0	17.81	154.71	2,266.1	2,291.89	-237.4	112.2	247.0	0.00	0.00	0.00
2,400.0	17.81	154.71	2,361.3	2,196.68	-265.0	125.2	275.8	0.00	0.00	0.00
2,500.0	17.81	154.71	2,456.5	2,101.47	-292.7	138.3	304.5	0.00	0.00	0.00
2,600.0	17.81	154.71	2,551.7	2,006.27	-320.3	151.4	333.3	0.00	0.00	0.00
2,700.0	17.81	154.71	2,646.9	1,911.06	-348.0	164.4	362.1	0.00	0.00	0.00
2,800.0	17.81	154.71	2,742.2	1,815.85	-375.6	177.5	390.9	0.00	0.00	0.00
2,900.0	17.81	154.71	2,837.4	1,720.64	-403.3	190.6	419.6	0.00	0.00	0.00
3,000.0	17.81	154.71	2,932.6	1,625.43	-430.9	203.6	448.4	0.00	0.00	0.00
3,100.0	17.81	154.71	3,027.8	1,530.22	-458.6	216.7	477.2	0.00	0.00	0.00
3,200.0	17.81	154.71	3,123.0	1,435.01	-486.2	229.8	505.9	0.00	0.00	0.00
3,300.0	17.81	154.71	3,218.2	1,339.80	-513.9	242.8	534.7	0.00	0.00	0.00
3,400.0	17.81	154.71	3,313.4	1,244.59	-541.5	255.9	563.5	0.00	0.00	0.00
3,500.0	17.81	154.71	3,408.6	1,149.39	-569.2	269.0	592.3	0.00	0.00	0.00
3,600.0	17.81	154.71	3,503.8	1,054.18	-596.8	282.0	621.0	0.00	0.00	0.00
3,700.0	17.81	154.71	3,599.0	958.97	-624.5	295.1	649.8	0.00	0.00	0.00
3,800.0	17.81	154.71	3,694.2	863.76	-652.1	308.2	678.6	0.00	0.00	0.00
3,900.0	17.81	154.71	3,789.4	768.55	-679.8	321.2	707.4	0.00	0.00	0.00
4,000.0	17.81	154.71	3,884.7	673.34	-707.4	334.3	736.1	0.00	0.00	0.00
4,100.0	17.81	154.71	3,979.9	578.13	-735.1	347.4	764.9	0.00	0.00	0.00
4,200.0	17.81	154.71	4,075.1	482.92	-762.7	360.4	793.7	0.00	0.00	0.00
4,300.0	17.81	154.71	4,170.3	387.72	-790.4	373.5	822.4	0.00	0.00	0.00
4,400.0	17.81	154.71	4,265.5	292.51	-818.0	386.6	851.2	0.00	0.00	0.00
4,500.0	17.81	154.71	4,360.7	197.30	-845.7	399.7	880.0	0.00	0.00	0.00
4,600.0	17.81	154.71	4,455.9	102.09	-873.3	412.7	908.8	0.00	0.00	0.00
4,700.0	17.81	154.71	4,551.1	6.88	-901.0	425.8	937.5	0.00	0.00	0.00
4,800.0	17.81	154.71	4,646.3	-88.33	-928.6	438.9	966.3	0.00	0.00	0.00
4,900.0	17.81	154.71	4,741.5	-183.54	-956.3	451.9	995.1	0.00	0.00	0.00
5,000.0	17.81	154.71	4,836.7	-278.75	-983.9	465.0	1,023.9	0.00	0.00	0.00

Planning Report



Database:	EDM 5000.1 Single User Db	Local Co-ordinate Reference:	Well NORTH PLATTE 31-34-34HNC
Company:	BONANZA CREEK ENERGY INC.	TVD Reference:	KB-EST @ 4558.0usft (Original Well Elev)
Project:	WELD COUNTY, COLORADO (NAD 83)	MD Reference:	KB-EST @ 4558.0usft (Original Well Elev)
Site:	SE SW SEC. 27 T5N R63W 6th P.M.	North Reference:	True
Well:	NORTH PLATTE 31-34-34HNC	Survey Calculation Method:	Minimum Curvature
Wellbore:	ORIGINAL WELLBORE		
Design:	PROPOSAL #4		

Planned Survey

MD (usft)	Inc (°)	Azi (°)	TVD (usft)	SS (usft)	+N/-S (usft)	+E/-W (usft)	Vertical Section (usft)	Dogleg Rate (°/100usft)	Build Rate (°/100usft)	Turn Rate (°/100usft)
5,100.0	17.81	154.71	4,932.0	-373.95	-1,011.6	478.1	1,052.6	0.00	0.00	0.00
END OF TANGENT										
5,149.0	17.81	154.71	4,978.6	-420.61	-1,025.1	484.5	1,066.7	0.00	0.00	0.00
5,200.0	16.79	154.71	5,027.3	-469.30	-1,038.8	490.9	1,081.0	2.00	-2.00	0.00
5,300.0	14.79	154.71	5,123.5	-565.52	-1,063.4	502.6	1,106.6	2.00	-2.00	0.00
5,400.0	12.79	154.71	5,220.6	-662.64	-1,085.0	512.7	1,129.0	2.00	-2.00	0.00
5,500.0	10.79	154.71	5,318.5	-760.52	-1,103.4	521.5	1,148.2	2.00	-2.00	0.00
5,600.0	8.79	154.71	5,417.1	-859.06	-1,118.8	528.7	1,164.2	2.00	-2.00	0.00
5,700.0	6.79	154.71	5,516.1	-958.14	-1,131.0	534.5	1,177.0	2.00	-2.00	0.00
5,800.0	4.79	154.71	5,615.6	-1,057.62	-1,140.2	538.8	1,186.5	2.00	-2.00	0.00
5,900.0	2.79	154.71	5,715.4	-1,157.40	-1,146.1	541.7	1,192.7	2.00	-2.00	0.00
6,000.0	0.79	154.71	5,815.3	-1,257.34	-1,149.0	543.0	1,195.6	2.00	-2.00	0.00
EOD TO VERTICAL										
6,039.4	0.00	0.00	5,854.7	-1,296.74	-1,149.2	543.1	1,195.9	2.00	-2.00	0.00
KOP (12°/100ft BUR)										
6,069.4	0.00	0.00	5,884.7	-1,326.74	-1,149.2	543.1	1,195.9	0.00	0.00	0.00
6,100.0	3.68	179.62	5,915.3	-1,357.32	-1,150.2	543.1	1,196.8	12.02	12.02	0.00
6,200.0	15.68	179.62	6,013.7	-1,455.72	-1,167.0	543.2	1,213.5	12.00	12.00	0.00
6,300.0	27.68	179.62	6,106.5	-1,548.48	-1,203.8	543.5	1,250.3	12.00	12.00	0.00
6,400.0	39.68	179.62	6,189.5	-1,631.54	-1,259.2	543.8	1,305.4	12.00	12.00	0.00
6,500.0	51.68	179.62	6,259.3	-1,701.28	-1,330.6	544.3	1,376.5	12.00	12.00	0.00
6,600.0	63.68	179.62	6,312.7	-1,754.66	-1,414.9	544.9	1,460.5	12.00	12.00	0.00
START OF TANGENT										
6,694.4	75.00	179.62	6,345.9	-1,787.91	-1,503.1	545.4	1,548.4	11.99	11.99	0.00
6,700.0	75.00	179.62	6,347.4	-1,789.36	-1,508.5	545.5	1,553.8	0.00	0.00	0.00
END OF TANGENT										
6,794.4	75.00	179.62	6,371.8	-1,813.79	-1,599.7	546.1	1,644.6	0.00	0.00	0.00
6,800.0	75.68	179.62	6,373.2	-1,815.21	-1,605.1	546.1	1,650.0	12.09	12.09	0.00
6,900.0	87.68	179.62	6,387.7	-1,829.65	-1,703.9	546.8	1,748.4	12.00	12.00	0.00
7" ICP - NORTH PLATTE 31-34-34HNC (P4)										
6,919.4	90.00	179.62	6,388.0	-1,830.05	-1,723.3	546.9	1,767.7	11.97	11.97	0.00
7,000.0	90.00	179.62	6,388.0	-1,830.05	-1,803.9	547.4	1,848.0	0.00	0.00	0.00
7,100.0	90.00	179.62	6,388.0	-1,830.05	-1,903.9	548.1	1,947.6	0.00	0.00	0.00
7,200.0	90.00	179.62	6,388.0	-1,830.05	-2,003.9	548.8	2,047.2	0.00	0.00	0.00
7,300.0	90.00	179.62	6,388.0	-1,830.05	-2,103.9	549.4	2,146.8	0.00	0.00	0.00
7,400.0	90.00	179.62	6,388.0	-1,830.05	-2,203.9	550.1	2,246.4	0.00	0.00	0.00
7,500.0	90.00	179.62	6,388.0	-1,830.05	-2,303.9	550.8	2,346.0	0.00	0.00	0.00
7,600.0	90.00	179.62	6,388.0	-1,830.05	-2,403.9	551.4	2,445.6	0.00	0.00	0.00
7,700.0	90.00	179.62	6,388.0	-1,830.05	-2,503.9	552.1	2,545.2	0.00	0.00	0.00
7,800.0	90.00	179.62	6,388.0	-1,830.04	-2,603.9	552.8	2,644.8	0.00	0.00	0.00
7,900.0	90.00	179.62	6,388.0	-1,830.04	-2,703.9	553.4	2,744.4	0.00	0.00	0.00
8,000.0	90.00	179.62	6,388.0	-1,830.04	-2,803.9	554.1	2,844.0	0.00	0.00	0.00
8,100.0	90.00	179.62	6,388.0	-1,830.04	-2,903.9	554.8	2,943.6	0.00	0.00	0.00
8,200.0	90.00	179.62	6,388.0	-1,830.04	-3,003.9	555.4	3,043.2	0.00	0.00	0.00
8,300.0	90.00	179.62	6,388.0	-1,830.04	-3,103.9	556.1	3,142.8	0.00	0.00	0.00
8,400.0	90.00	179.62	6,388.0	-1,830.04	-3,203.9	556.8	3,242.4	0.00	0.00	0.00
8,500.0	90.00	179.62	6,388.0	-1,830.04	-3,303.9	557.4	3,342.0	0.00	0.00	0.00
8,600.0	90.00	179.62	6,388.0	-1,830.04	-3,403.8	558.1	3,441.6	0.00	0.00	0.00
8,700.0	90.00	179.62	6,388.0	-1,830.04	-3,503.8	558.8	3,541.2	0.00	0.00	0.00
8,800.0	90.00	179.62	6,388.0	-1,830.04	-3,603.8	559.4	3,640.8	0.00	0.00	0.00
8,900.0	90.00	179.62	6,388.0	-1,830.04	-3,703.8	560.1	3,740.4	0.00	0.00	0.00
9,000.0	90.00	179.62	6,388.0	-1,830.04	-3,803.8	560.8	3,840.0	0.00	0.00	0.00
9,100.0	90.00	179.62	6,388.0	-1,830.03	-3,903.8	561.4	3,939.6	0.00	0.00	0.00

Planning Report



Database:	EDM 5000.1 Single User Db	Local Co-ordinate Reference:	Well NORTH PLATTE 31-34-34HNC
Company:	BONANZA CREEK ENERGY INC.	TVD Reference:	KB-EST @ 4558.0usft (Original Well Elev)
Project:	WELD COUNTY, COLORADO (NAD 83)	MD Reference:	KB-EST @ 4558.0usft (Original Well Elev)
Site:	SE SW SEC. 27 T5N R63W 6th P.M.	North Reference:	True
Well:	NORTH PLATTE 31-34-34HNC	Survey Calculation Method:	Minimum Curvature
Wellbore:	ORIGINAL WELLBORE		
Design:	PROPOSAL #4		

Planned Survey										
MD (usft)	Inc (°)	Azi (°)	TVD (usft)	SS (usft)	+N/-S (usft)	+E/-W (usft)	Vertical Section (usft)	Dogleg Rate (°/100usft)	Build Rate (°/100usft)	Turn Rate (°/100usft)
9,200.0	90.00	179.62	6,388.0	-1,830.03	-4,003.8	562.1	4,039.2	0.00	0.00	0.00
9,300.0	90.00	179.62	6,388.0	-1,830.03	-4,103.8	562.8	4,138.8	0.00	0.00	0.00
9,400.0	90.00	179.62	6,388.0	-1,830.03	-4,203.8	563.5	4,238.4	0.00	0.00	0.00
9,500.0	90.00	179.62	6,388.0	-1,830.03	-4,303.8	564.1	4,338.0	0.00	0.00	0.00
9,600.0	90.00	179.62	6,388.0	-1,830.03	-4,403.8	564.8	4,437.7	0.00	0.00	0.00
9,700.0	90.00	179.62	6,388.0	-1,830.03	-4,503.8	565.5	4,537.3	0.00	0.00	0.00
9,800.0	90.00	179.62	6,388.0	-1,830.03	-4,603.8	566.1	4,636.9	0.00	0.00	0.00
9,900.0	90.00	179.61	6,388.0	-1,830.02	-4,703.8	566.8	4,736.5	0.00	0.00	0.00
10,000.0	90.00	179.61	6,388.0	-1,830.02	-4,803.8	567.5	4,836.1	0.00	0.00	0.00
10,100.0	90.00	179.61	6,388.0	-1,830.02	-4,903.8	568.2	4,935.7	0.00	0.00	0.00
10,200.0	90.00	179.61	6,388.0	-1,830.02	-5,003.8	568.8	5,035.3	0.00	0.00	0.00
10,300.0	90.00	179.61	6,388.0	-1,830.02	-5,103.8	569.5	5,134.9	0.00	0.00	0.00
10,400.0	90.00	179.61	6,388.0	-1,830.02	-5,203.8	570.2	5,234.5	0.00	0.00	0.00
10,500.0	90.00	179.61	6,388.0	-1,830.01	-5,303.8	570.8	5,334.1	0.00	0.00	0.00
10,600.0	90.00	179.61	6,388.0	-1,830.01	-5,403.8	571.5	5,433.7	0.00	0.00	0.00
10,700.0	90.00	179.61	6,388.0	-1,830.01	-5,503.8	572.2	5,533.3	0.00	0.00	0.00
10,800.0	90.00	179.61	6,388.0	-1,830.01	-5,603.8	572.9	5,632.9	0.00	0.00	0.00
10,900.0	90.00	179.61	6,388.0	-1,830.01	-5,703.8	573.5	5,732.5	0.00	0.00	0.00
11,000.0	90.00	179.61	6,388.0	-1,830.00	-5,803.8	574.2	5,832.1	0.00	0.00	0.00
11,100.0	90.00	179.61	6,388.0	-1,830.00	-5,903.8	574.9	5,931.7	0.00	0.00	0.00
BHL - NORTH PLATTE 31-34-34HNC (P4)										
11,189.1	90.00	179.61	6,388.0	-1,830.00	-5,992.9	575.5	6,020.4	0.00	0.00	0.00

Plan Annotations				
MD (usft)	TVD (usft)	Local Coordinates		Comment
		+N/-S (usft)	+E/-W (usft)	
1,000.0	1,000.0	0.0	0.0	START NUDGE (2°/100ft BUR)
1,890.4	1,876.1	-124.1	58.6	EOB TO 17.81° INC
5,149.0	4,978.6	-1,025.1	484.5	END OF TANGENT
6,039.4	5,854.7	-1,149.2	543.1	EOD TO VERTICAL
6,069.4	5,884.7	-1,149.2	543.1	KOP (12°/100ft BUR)
6,694.4	6,345.9	-1,503.1	545.4	START OF TANGENT
6,794.4	6,371.8	-1,599.7	546.1	END OF TANGENT
6,919.4	6,388.0	-1,723.3	546.9	7" ICP - NORTH PLATTE 31-34-34HNC (P4)
11,189.1	6,388.0	-5,992.9	575.5	BHL - NORTH PLATTE 31-34-34HNC (P4)