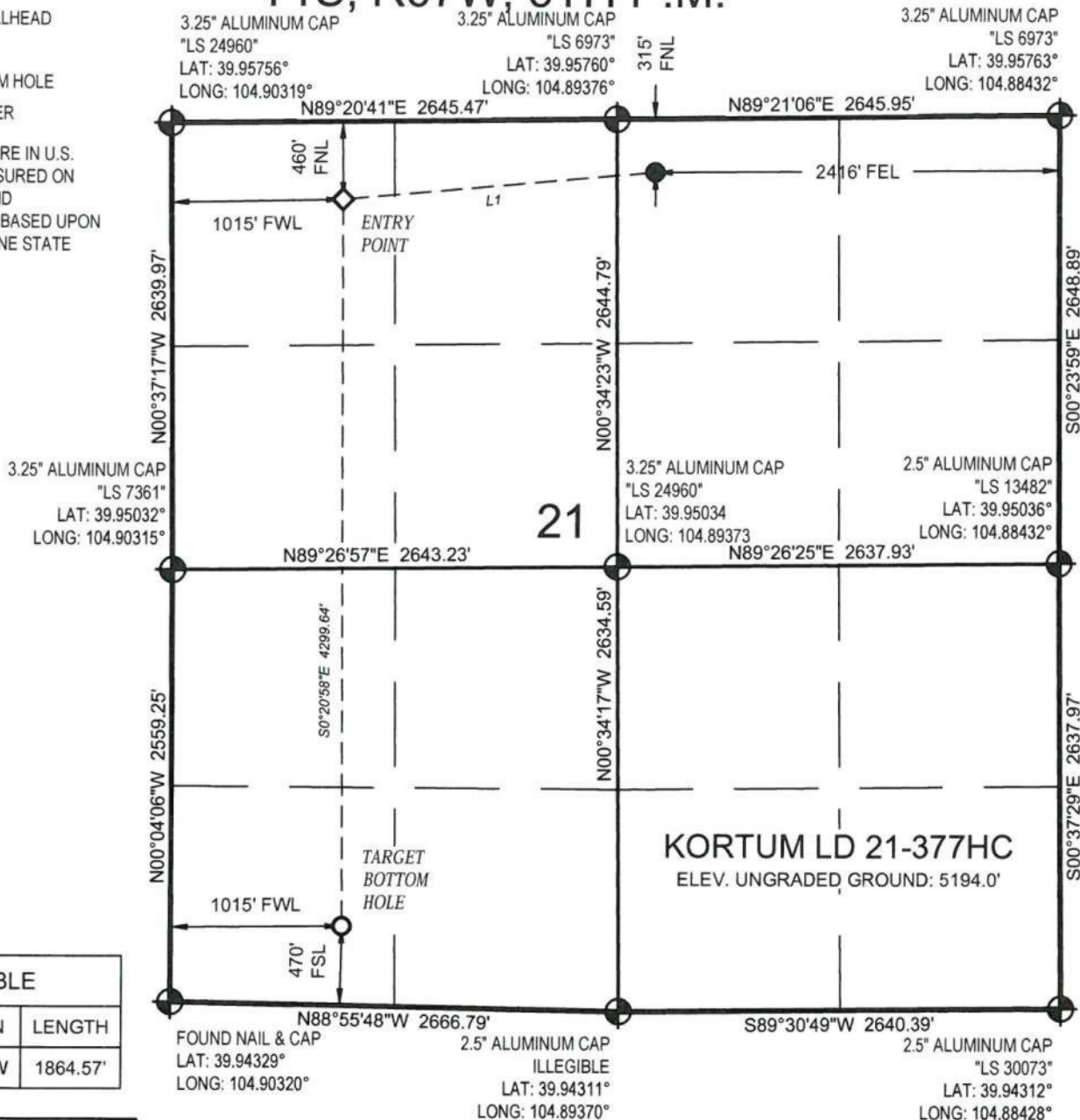


LEGEND

- PROPOSED WELLHEAD
- ◆ ENTRY POINT
- TARGET BOTTOM HOLE
- ⊕ SECTION CORNER

NOTE: UNITS SHOWN ARE IN U.S. SURVEY FEET AS MEASURED ON GROUND. LATITUDE AND LONGITUDE IS SHOWN BASED UPON COLORADO NORTH ZONE STATE PLANE (NAD83).

T1S, R67W, 6TH P.M.



LINE TABLE

LINE	DIRECTION	LENGTH
L1	S84°52'43\"W	1864.57'

PDOP = 1.1

NAD 83 (TARGET BOTTOM HOLE)
 LATITUDE = 39°56'40.25\" (39.944514°)
 LONGITUDE = 104°53'58.47\" (104.899574°)

NAD 27 (TARGET BOTTOM HOLE)
 LATITUDE = 39°56'40.31\" (39.944529°)
 LONGITUDE = 104°53'56.55\" (104.899043°)

NAD 83 (ENTRY POINT)	NAD 83 (SURFACE LOCATION)
LATITUDE = 39°57'22.73\" (39.956313°)	LATITUDE = 39°57'24.25\" (39.956736°)
LONGITUDE = 104°53'58.43\" (104.899564°)	LONGITUDE = 104°53'34.58\" (104.892938°)
NAD 27 (ENTRY POINT)	NAD 27 (SURFACE LOCATION)
LATITUDE = 39°57'22.78\" (39.956329°)	LATITUDE = 39°57'24.30\" (39.956751°)
LONGITUDE = 104°53'56.52\" (104.899032°)	LONGITUDE = 104°53'32.66\" (104.892407°)



CERTIFICATE

THIS IS TO CERTIFY THAT THE ABOVE PLAT WAS PREPARED FROM FIELD NOTES OF ACTUAL SURVEYS MADE BY ME OR UNDER MY DIRECT CHARGE AND THAT THE SAME ARE TRUE AND CORRECT TO THE BEST OF MY PROFESSIONAL KNOWLEDGE AND BELIEF.

DANA L. SPERLING
 PROFESSIONAL LAND SURVEYOR
 COLORADO LICENSE NUMBER 38012



BASIS OF BEARINGS

BASIS OF BEARINGS IS A G.P.S. OBSERVATION

BASIS OF ELEVATION

PUBLISHED VALUES OF NGS CONTROL STATION "J 411" WITH AN ELEVATION OF 5098 FEET (NAVD 88)

GREAT WESTERN OIL & GAS COMPANY

KORTUM LD 21-377HC
 NW1/4, NE1/4, SECTION 21, T1S, R67W, 6TH P.M.
 ADAMS COUNTY, COLORADO

SURVEYED BY: Dana L. Sperling and J.S.	DATE: 11.19.14
DRAWN BY: LHG	DATE DRAWN: 11.26.14
SCALE: 1" = 1000'	REVISED: 04.06.15

WELL LOCATION PLAT