

KERR-MCGEE OIL & GAS ONSHORE LP_1



Location: Compass Import Slot: SLOT#05 GE POWERS 3N-26HZ
Field: WELD COUNTY (UTM (ZONE 13)/NAD83/TRUE NORTH) Well: GE POWERS 3N-26HZ
Facility: 2N-65W-23 Offsets Wellbore: GE POWERS 3N-26HZ PWB

Plot reference wellpath is GE POWERS 3N-26HZ (PERMIT REV-2) PWP

True vertical depths are referenced to PERMIT (17'KB) (RKB) Grid System: NAD83 / UTM Zone 13 North, US feet
Measured depths are referenced to PERMIT (17'KB) (RKB) North Reference: True north
PERMIT (17'KB) (RKB) to Mean Sea Level: 4907 feet Scale: Grid distance
Mean Sea Level to Mud line (At Slot: SLOT#05 GE POWERS 3N-26HZ): 0 feet Depths are in feet
Coordinates are in feet referenced to Slot Created by: precin on 2/4/2015

Location Information

Facility Name			Grid East (US ft)	Grid North (US ft)	Latitude	Longitude
2N-65W-23 Offsets			1743038.821	14574304.203	40°07'48.198"N	104°37'58.303"W
Slot	Local N (ft)	Local E (ft)	Grid East (US ft)	Grid North (US ft)	Latitude	Longitude
SLOT#05 GE POWERS 3N-26HZ	68.09	-796.40	1742242.143	14574369.003	40°07'48.871"N	104°38'08.560"W
PERMIT (17KB) (RKB) to Mud line (At Slot: SLOT#05 GE POWERS 3N-26HZ)					4907ft	
Mean Sea Level to Mud line (At Slot: SLOT#05 GE POWERS 3N-26HZ)					0ft	
PERMIT (17KB) (RKB) to Mean Sea Level					4907ft	

Survey Program

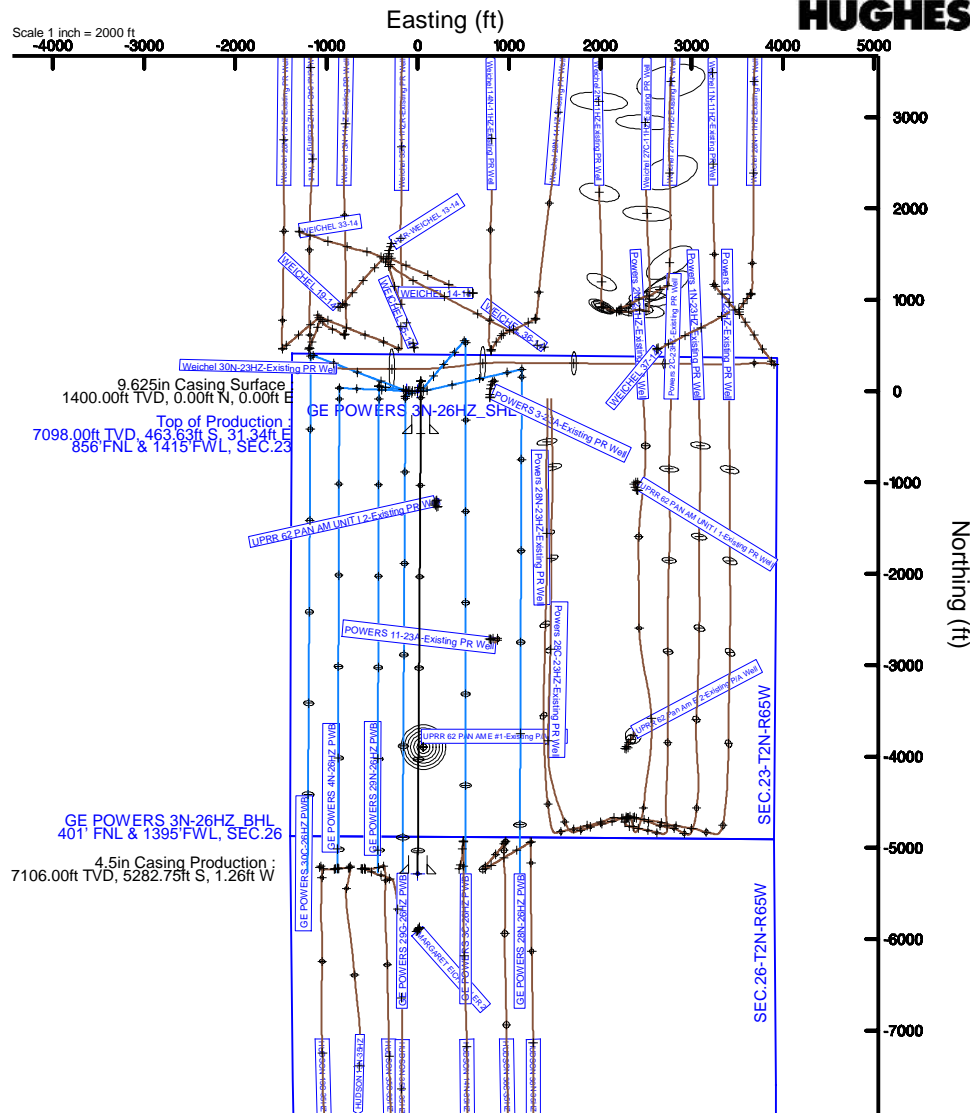
Start MD (ft)	End MD (ft)	Tool	Model	Log Name/Comment	Wellbore
17.00	12250.75	ISOWSA MWD, Rev. 2, axial magnetic correction	ISOWSA MWD, Rev. 2, axial magnetic correction (Standard) (MagYAR IFR Wattenberg)		GE POWERS 3N-26HZ PWB

Well Profile Data

Design Comment	MD (ft)	Inc (°)	Az (°)	TVD (ft)	Local N (ft)	Local E (ft)	DLS (°/100ft)	VS (ft)
TIE-ON	17.00	0.000	18.000	17.00	0.00	0.00	0.00	0.00
BEGIN NUDGE	1500.00	0.000	18.000	1500.00	0.00	0.00	0.00	0.00
END NUDGE	2000.00	10.000	18.000	1997.47	41.39	13.45	2.00	-41.48
BEGIN DROP	2154.89	10.000	18.000	2150.00	66.97	21.76	0.00	-67.12
END DROP	2654.89	0.000	180.388	2647.47	108.36	35.21	2.00	-108.60
KOP, BUILD @ 10°/100'	6532.47	0.000	180.388	6525.05	108.36	35.21	0.00	-108.60
LANDING POINT	7431.52	89.905	180.388	7098.00	-463.63	31.34	10.00	463.41
TOTAL DEPTH	12250.75	89.905	180.388	7106.00	-5282.75	-1.26	0.00	5282.64

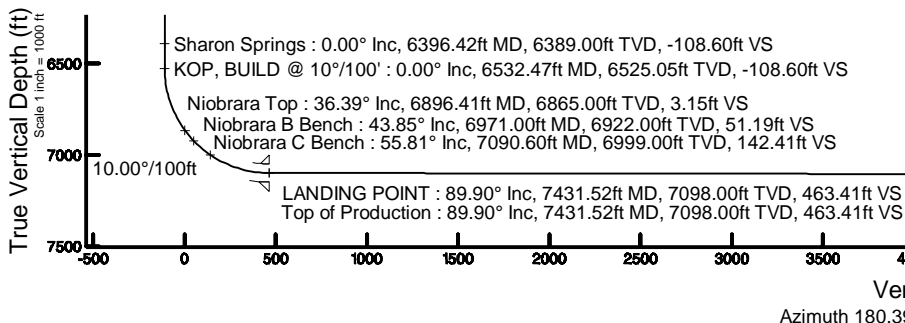
Targets

Name	MD (ft)	TVD (ft)	Local N (ft)	Local E (ft)	Grid East (US ft)	Grid North (US ft)	Latitude	Longitude
GE POWERS 3N-26HZ_SHL	4907.00	0.00	0.00	0.00	1742242.14	14574369.00	40°07'48.871"N	104°38'08.560"W
SEC.23-T2N-R65W	4907.00	1.11	-120.19	-120.19	1742121.95	14574369.62	40°07'48.882"N	104°38'10.108"W
SEC.26-T2N-R65W	4907.00	1.11	-120.19	-120.19	1742121.95	14574369.62	40°07'48.882"N	104°38'10.108"W
GE POWERS 3N-26HZ_BHL	12250.75	7106.00	-5282.75	-1.26	1742262.53	14569086.30	40°06'56.646"N	104°38'08.576"W



GE POWERS 3N-26HZ_BHL
401' FNL & 1395' FWL, SEC.26

4.5in Casing Production :
7106.00ft TVD, 5282.75ft S, 1.26ft W



REFERENCE WELLPATH IDENTIFICATION			
Operator	KERR-MCGEE OIL & GAS ONSHORE LP_1	Slot	SLOT#05 GE POWERS 3N-26HZ
Area	Compass Import	Well	GE POWERS 3N-26HZ
Field	WELD COUNTY (UTM (ZONE 13)/NAD83/TRUE NORTH)	Wellbore	GE POWERS 3N-26HZ PWB
Facility	2N-65W-23 Offsets		

REPORT SETUP INFORMATION			
Projection System	NAD83 / UTM Zone 13 North, US feet	Software System	WellArchitect® 4.1.1
North Reference	True	User	Precain
Scale	0.999612	Report Generated	4/24/2015 at 12:27:45 PM
Convergence at slot	0.23° East	Database/Source file	WellArchitectDC/GE_POWER_3N-26HZ_PWB.xml

WELLPATH LOCATION						
	Local coordinates		Grid coordinates		Geographic coordinates	
	North[ft]	East[ft]	Easting[US ft]	Northing[US ft]	Latitude	Longitude
Slot Location	68.09	-796.40	1742242.14	14574369.00	40°07'48.871"N	104°38'08.560"W
Facility Reference Pt			1743038.82	14574304.20	40°07'48.198"N	104°37'58.303"W
Field Reference Pt			1700626.56	14568707.73	40°06'54.245"N	104°47'04.711"W

WELLPATH DATUM			
Calculation method	Minimum curvature	PERMIT (17'KB) (RKB) to 2N-65W-23 Offsets vertical datum	4907.00ft
Horizontal Reference Pt	Slot	PERMIT (17'KB) (RKB) to Mean Sea Level	4907.00ft
Vertical Reference Pt	PERMIT (17'KB) (RKB)	PERMIT (17'KB) (RKB) to Mud Line at Slot (SLOT#05 GE POWERS 3N-26HZ)	4907.00ft
MD Reference Pt	PERMIT (17'KB) (RKB)	Section Origin	N 0.00, E 0.00 ft
Field Vertical Reference	Mean Sea Level	Section Azimuth	180.39°

REFERENCE WELLPATH IDENTIFICATION

Operator	KERR-MCGEE OIL & GAS ONSHORE LP_1	Slot	SLOT#05 GE POWERS 3N-26HZ
Area	Compass Import	Well	GE POWERS 3N-26HZ
Field	WELD COUNTY (UTM (ZONE 13)/NAD83/TRUE NORTH)	Wellbore	GE POWERS 3N-26HZ PWB
Facility	2N-65W-23 Offsets		

WELLPATH DATA (137 stations) † = interpolated/extrapolated station

MD [ft]	Inclination [°]	Azimuth [°]	TVD [ft]	Vert Sect [ft]	North [ft]	East [ft]	Latitude	Longitude	DLS [°/100ft]	Comments
0.00†	0.000	18.000	0.00	0.00	0.00	0.00	40°07'48.871"N	104°38'08.560"W	0.00	
17.00	0.000	18.000	17.00	0.00	0.00	0.00	40°07'48.871"N	104°38'08.560"W	0.00	TIE-ON
117.00†	0.000	18.000	117.00	0.00	0.00	0.00	40°07'48.871"N	104°38'08.560"W	0.00	
217.00†	0.000	18.000	217.00	0.00	0.00	0.00	40°07'48.871"N	104°38'08.560"W	0.00	
317.00†	0.000	18.000	317.00	0.00	0.00	0.00	40°07'48.871"N	104°38'08.560"W	0.00	
417.00†	0.000	18.000	417.00	0.00	0.00	0.00	40°07'48.871"N	104°38'08.560"W	0.00	
517.00†	0.000	18.000	517.00	0.00	0.00	0.00	40°07'48.871"N	104°38'08.560"W	0.00	
617.00†	0.000	18.000	617.00	0.00	0.00	0.00	40°07'48.871"N	104°38'08.560"W	0.00	
717.00†	0.000	18.000	717.00	0.00	0.00	0.00	40°07'48.871"N	104°38'08.560"W	0.00	
817.00†	0.000	18.000	817.00	0.00	0.00	0.00	40°07'48.871"N	104°38'08.560"W	0.00	
917.00†	0.000	18.000	917.00	0.00	0.00	0.00	40°07'48.871"N	104°38'08.560"W	0.00	
1017.00†	0.000	18.000	1017.00	0.00	0.00	0.00	40°07'48.871"N	104°38'08.560"W	0.00	
1117.00†	0.000	18.000	1117.00	0.00	0.00	0.00	40°07'48.871"N	104°38'08.560"W	0.00	
1217.00†	0.000	18.000	1217.00	0.00	0.00	0.00	40°07'48.871"N	104°38'08.560"W	0.00	
1317.00†	0.000	18.000	1317.00	0.00	0.00	0.00	40°07'48.871"N	104°38'08.560"W	0.00	
1417.00†	0.000	18.000	1417.00	0.00	0.00	0.00	40°07'48.871"N	104°38'08.560"W	0.00	
1500.00	0.000	18.000	1500.00	0.00	0.00	0.00	40°07'48.871"N	104°38'08.560"W	0.00	BEGIN NUDGE
1517.00†	0.340	18.000	1517.00	-0.05	0.05	0.02	40°07'48.871"N	104°38'08.560"W	2.00	
1617.00†	2.340	18.000	1616.97	-2.28	2.27	0.74	40°07'48.893"N	104°38'08.550"W	2.00	
1717.00†	4.340	18.000	1716.79	-7.83	7.81	2.54	40°07'48.948"N	104°38'08.527"W	2.00	
1817.00†	6.340	18.000	1816.35	-16.70	16.66	5.41	40°07'49.036"N	104°38'08.490"W	2.00	
1917.00†	8.340	18.000	1915.53	-28.88	28.81	9.36	40°07'49.156"N	104°38'08.439"W	2.00	
2000.00	10.000	18.000	1997.47	-41.48	41.39	13.45	40°07'49.280"N	104°38'08.387"W	2.00	END NUDGE
2017.00†	10.000	18.000	2014.21	-44.30	44.20	14.36	40°07'49.308"N	104°38'08.375"W	0.00	
2117.00†	10.000	18.000	2112.69	-60.85	60.71	19.73	40°07'49.471"N	104°38'08.306"W	0.00	
2154.89	10.000	18.000	2150.00	-67.12	66.97	21.76	40°07'49.533"N	104°38'08.280"W	0.00	BEGIN DROP
2217.00†	8.758	18.000	2211.28	-76.77	76.60	24.89	40°07'49.628"N	104°38'08.239"W	2.00	
2317.00†	6.758	18.000	2310.36	-89.63	89.44	29.06	40°07'49.755"N	104°38'08.186"W	2.00	
2417.00†	4.758	18.000	2409.85	-99.19	98.98	32.16	40°07'49.849"N	104°38'08.146"W	2.00	
2517.00†	2.758	18.000	2509.63	-105.44	105.21	34.18	40°07'49.911"N	104°38'08.120"W	2.00	
2617.00†	0.758	18.000	2609.58	-108.36	108.13	35.13	40°07'49.940"N	104°38'08.108"W	2.00	
2654.89	0.000	180.388	2647.47	-108.60	108.36	35.21	40°07'49.942"N	104°38'08.107"W	2.00	END DROP
2717.00†	0.000	180.388	2709.58	-108.60	108.36	35.21	40°07'49.942"N	104°38'08.107"W	0.00	
2817.00†	0.000	180.388	2809.58	-108.60	108.36	35.21	40°07'49.942"N	104°38'08.107"W	0.00	
2917.00†	0.000	180.388	2909.58	-108.60	108.36	35.21	40°07'49.942"N	104°38'08.107"W	0.00	
3017.00†	0.000	180.388	3009.58	-108.60	108.36	35.21	40°07'49.942"N	104°38'08.107"W	0.00	
3117.00†	0.000	180.388	3109.58	-108.60	108.36	35.21	40°07'49.942"N	104°38'08.107"W	0.00	
3217.00†	0.000	180.388	3209.58	-108.60	108.36	35.21	40°07'49.942"N	104°38'08.107"W	0.00	
3317.00†	0.000	180.388	3309.58	-108.60	108.36	35.21	40°07'49.942"N	104°38'08.107"W	0.00	
3417.00†	0.000	180.388	3409.58	-108.60	108.36	35.21	40°07'49.942"N	104°38'08.107"W	0.00	
3517.00†	0.000	180.388	3509.58	-108.60	108.36	35.21	40°07'49.942"N	104°38'08.107"W	0.00	
3617.00†	0.000	180.388	3609.58	-108.60	108.36	35.21	40°07'49.942"N	104°38'08.107"W	0.00	
3717.00†	0.000	180.388	3709.58	-108.60	108.36	35.21	40°07'49.942"N	104°38'08.107"W	0.00	
3817.00†	0.000	180.388	3809.58	-108.60	108.36	35.21	40°07'49.942"N	104°38'08.107"W	0.00	
3917.00†	0.000	180.388	3909.58	-108.60	108.36	35.21	40°07'49.942"N	104°38'08.107"W	0.00	

REFERENCE WELLPATH IDENTIFICATION			
Operator	KERR-MCGEE OIL & GAS ONSHORE LP_1	Slot	SLOT#05 GE POWERS 3N-26HZ
Area	Compass Import	Well	GE POWERS 3N-26HZ
Field	WELD COUNTY (UTM (ZONE 13)/NAD83/TRUE NORTH)	Wellbore	GE POWERS 3N-26HZ PWB
Facility	2N-65W-23 Offsets		

WELLPATH DATA (137 stations) † = interpolated/extrapolated station										
MD [ft]	Inclination [°]	Azimuth [°]	TVD [ft]	Vert Sect [ft]	North [ft]	East [ft]	Latitude	Longitude	DLS [°/100ft]	Comments
4017.00†	0.000	180.388	4009.58	-108.60	108.36	35.21	40°07'49.942"N	104°38'08.107"W	0.00	
4117.00†	0.000	180.388	4109.58	-108.60	108.36	35.21	40°07'49.942"N	104°38'08.107"W	0.00	
4217.00†	0.000	180.388	4209.58	-108.60	108.36	35.21	40°07'49.942"N	104°38'08.107"W	0.00	
4317.00†	0.000	180.388	4309.58	-108.60	108.36	35.21	40°07'49.942"N	104°38'08.107"W	0.00	
4417.00†	0.000	180.388	4409.58	-108.60	108.36	35.21	40°07'49.942"N	104°38'08.107"W	0.00	
4498.42†	0.000	180.388	4491.00	-108.60	108.36	35.21	40°07'49.942"N	104°38'08.107"W	0.00	Sussex
4517.00†	0.000	180.388	4509.58	-108.60	108.36	35.21	40°07'49.942"N	104°38'08.107"W	0.00	
4617.00†	0.000	180.388	4609.58	-108.60	108.36	35.21	40°07'49.942"N	104°38'08.107"W	0.00	
4717.00†	0.000	180.388	4709.58	-108.60	108.36	35.21	40°07'49.942"N	104°38'08.107"W	0.00	
4817.00†	0.000	180.388	4809.58	-108.60	108.36	35.21	40°07'49.942"N	104°38'08.107"W	0.00	
4917.00†	0.000	180.388	4909.58	-108.60	108.36	35.21	40°07'49.942"N	104°38'08.107"W	0.00	
5017.00†	0.000	180.388	5009.58	-108.60	108.36	35.21	40°07'49.942"N	104°38'08.107"W	0.00	
5117.00†	0.000	180.388	5109.58	-108.60	108.36	35.21	40°07'49.942"N	104°38'08.107"W	0.00	
5217.00†	0.000	180.388	5209.58	-108.60	108.36	35.21	40°07'49.942"N	104°38'08.107"W	0.00	
5317.00†	0.000	180.388	5309.58	-108.60	108.36	35.21	40°07'49.942"N	104°38'08.107"W	0.00	
5417.00†	0.000	180.388	5409.58	-108.60	108.36	35.21	40°07'49.942"N	104°38'08.107"W	0.00	
5517.00†	0.000	180.388	5509.58	-108.60	108.36	35.21	40°07'49.942"N	104°38'08.107"W	0.00	
5617.00†	0.000	180.388	5609.58	-108.60	108.36	35.21	40°07'49.942"N	104°38'08.107"W	0.00	
5717.00†	0.000	180.388	5709.58	-108.60	108.36	35.21	40°07'49.942"N	104°38'08.107"W	0.00	
5817.00†	0.000	180.388	5809.58	-108.60	108.36	35.21	40°07'49.942"N	104°38'08.107"W	0.00	
5917.00†	0.000	180.388	5909.58	-108.60	108.36	35.21	40°07'49.942"N	104°38'08.107"W	0.00	
6017.00†	0.000	180.388	6009.58	-108.60	108.36	35.21	40°07'49.942"N	104°38'08.107"W	0.00	
6117.00†	0.000	180.388	6109.58	-108.60	108.36	35.21	40°07'49.942"N	104°38'08.107"W	0.00	
6217.00†	0.000	180.388	6209.58	-108.60	108.36	35.21	40°07'49.942"N	104°38'08.107"W	0.00	
6317.00†	0.000	180.388	6309.58	-108.60	108.36	35.21	40°07'49.942"N	104°38'08.107"W	0.00	
6396.42†	0.000	180.388	6389.00	-108.60	108.36	35.21	40°07'49.942"N	104°38'08.107"W	0.00	Sharon Springs
6417.00†	0.000	180.388	6409.58	-108.60	108.36	35.21	40°07'49.942"N	104°38'08.107"W	0.00	
6517.00†	0.000	180.388	6509.58	-108.60	108.36	35.21	40°07'49.942"N	104°38'08.107"W	0.00	
6532.47	0.000	180.388	6525.05	-108.60	108.36	35.21	40°07'49.942"N	104°38'08.107"W	0.00	KOP, BUILD @ 10°/100'
6617.00†	8.453	180.388	6609.27	-102.38	102.14	35.17	40°07'49.881"N	104°38'08.107"W	10.00	
6717.00†	18.453	180.388	6706.40	-79.14	78.90	35.01	40°07'49.651"N	104°38'08.109"W	10.00	
6817.00†	28.453	180.388	6798.03	-39.39	39.16	34.74	40°07'49.258"N	104°38'08.113"W	10.00	
6896.41†	36.394	180.388	6865.00	3.15	-3.38	34.45	40°07'48.838"N	104°38'08.116"W	10.00	Niobrara Top
6917.00†	38.453	180.388	6881.35	15.66	-15.90	34.37	40°07'48.714"N	104°38'08.117"W	10.00	
6971.00†	43.853	180.388	6922.00	51.19	-51.42	34.13	40°07'48.363"N	104°38'08.120"W	10.00	Niobrara B Bench
7017.00†	48.453	180.388	6953.86	84.35	-84.59	33.90	40°07'48.035"N	104°38'08.123"W	10.00	
7090.60†	55.813	180.388	6999.00	142.41	-142.64	33.51	40°07'47.461"N	104°38'08.128"W	10.00	Niobrara C Bench
7117.00†	58.453	180.388	7013.33	164.59	-164.82	33.36	40°07'47.242"N	104°38'08.130"W	10.00	
7217.00†	68.453	180.388	7057.96	253.93	-254.16	32.76	40°07'46.358"N	104°38'08.138"W	10.00	
7317.00†	78.453	180.388	7086.41	349.67	-349.90	32.11	40°07'45.412"N	104°38'08.146"W	10.00	
7417.00†	88.453	180.388	7097.79	448.89	-449.11	31.44	40°07'44.431"N	104°38'08.155"W	10.00	
7431.52	89.905	180.388	7098.00	463.41	-463.63	31.34	40°07'44.288"N	104°38'08.156"W	10.00	LANDING POINT
7431.52†	89.905	180.388	7098.00	463.41	-463.63	31.34	40°07'44.288"N	104°38'08.156"W	0.00	Top of Production
7517.00†	89.905	180.388	7098.14	548.89	-549.11	30.76	40°07'43.443"N	104°38'08.164"W	0.00	
7617.00†	89.905	180.388	7098.31	648.89	-649.11	30.09	40°07'42.454"N	104°38'08.173"W	0.00	

REFERENCE WELLPATH IDENTIFICATION			
Operator	KERR-MCGEE OIL & GAS ONSHORE LP_1	Slot	SLOT#05 GE POWERS 3N-26HZ
Area	Compass Import	Well	GE POWERS 3N-26HZ
Field	WELD COUNTY (UTM (ZONE 13)/NAD83/TRUE NORTH)	Wellbore	GE POWERS 3N-26HZ PWB
Facility	2N-65W-23 Offsets		

WELLPATH DATA (137 stations) † = interpolated/extrapolated station										
MD [ft]	Inclination [°]	Azimuth [°]	TVD [ft]	Vert Sect [ft]	North [ft]	East [ft]	Latitude	Longitude	DLS [°/100ft]	Comments
7717.00†	89.905	180.388	7098.48	748.89	-749.11	29.41	40°07'41.465"N	104°38'08.181"W	0.00	
7817.00†	89.905	180.388	7098.64	848.89	-849.10	28.73	40°07'40.477"N	104°38'08.190"W	0.00	
7917.00†	89.905	180.388	7098.81	948.89	-949.10	28.06	40°07'39.488"N	104°38'08.199"W	0.00	
8017.00†	89.905	180.388	7098.97	1048.89	-1049.10	27.38	40°07'38.500"N	104°38'08.207"W	0.00	
8117.00†	89.905	180.388	7099.14	1148.89	-1149.10	26.70	40°07'37.511"N	104°38'08.216"W	0.00	
8217.00†	89.905	180.388	7099.31	1248.89	-1249.09	26.03	40°07'36.523"N	104°38'08.225"W	0.00	
8317.00†	89.905	180.388	7099.47	1348.89	-1349.09	25.35	40°07'35.534"N	104°38'08.234"W	0.00	
8417.00†	89.905	180.388	7099.64	1448.89	-1449.09	24.67	40°07'34.545"N	104°38'08.242"W	0.00	
8517.00†	89.905	180.388	7099.80	1548.89	-1549.09	24.00	40°07'33.557"N	104°38'08.251"W	0.00	
8617.00†	89.905	180.388	7099.97	1648.89	-1649.08	23.32	40°07'32.568"N	104°38'08.260"W	0.00	
8717.00†	89.905	180.388	7100.14	1748.89	-1749.08	22.64	40°07'31.580"N	104°38'08.268"W	0.00	
8817.00†	89.905	180.388	7100.30	1848.89	-1849.08	21.97	40°07'30.591"N	104°38'08.277"W	0.00	
8917.00†	89.905	180.388	7100.47	1948.89	-1949.08	21.29	40°07'29.603"N	104°38'08.286"W	0.00	
9017.00†	89.905	180.388	7100.63	2048.89	-2049.07	20.62	40°07'28.614"N	104°38'08.295"W	0.00	
9117.00†	89.905	180.388	7100.80	2148.89	-2149.07	19.94	40°07'27.625"N	104°38'08.303"W	0.00	
9217.00†	89.905	180.388	7100.97	2248.89	-2249.07	19.26	40°07'26.637"N	104°38'08.312"W	0.00	
9317.00†	89.905	180.388	7101.13	2348.89	-2349.07	18.59	40°07'25.648"N	104°38'08.321"W	0.00	
9417.00†	89.905	180.388	7101.30	2448.89	-2449.06	17.91	40°07'24.660"N	104°38'08.329"W	0.00	
9517.00†	89.905	180.388	7101.46	2548.89	-2549.06	17.23	40°07'23.671"N	104°38'08.338"W	0.00	
9617.00†	89.905	180.388	7101.63	2648.89	-2649.06	16.56	40°07'22.683"N	104°38'08.347"W	0.00	
9717.00†	89.905	180.388	7101.80	2748.89	-2749.06	15.88	40°07'21.694"N	104°38'08.355"W	0.00	
9817.00†	89.905	180.388	7101.96	2848.89	-2849.05	15.20	40°07'20.705"N	104°38'08.364"W	0.00	
9917.00†	89.905	180.388	7102.13	2948.89	-2949.05	14.53	40°07'19.717"N	104°38'08.373"W	0.00	
10017.00†	89.905	180.388	7102.29	3048.89	-3049.05	13.85	40°07'18.728"N	104°38'08.382"W	0.00	
10117.00†	89.905	180.388	7102.46	3148.89	-3149.05	13.17	40°07'17.740"N	104°38'08.390"W	0.00	
10217.00†	89.905	180.388	7102.62	3248.89	-3249.04	12.50	40°07'16.751"N	104°38'08.399"W	0.00	
10317.00†	89.905	180.388	7102.79	3348.89	-3349.04	11.82	40°07'15.763"N	104°38'08.408"W	0.00	
10417.00†	89.905	180.388	7102.96	3448.89	-3449.04	11.14	40°07'14.774"N	104°38'08.416"W	0.00	
10517.00†	89.905	180.388	7103.12	3548.89	-3549.04	10.47	40°07'13.785"N	104°38'08.425"W	0.00	
10617.00†	89.905	180.388	7103.29	3648.89	-3649.04	9.79	40°07'12.797"N	104°38'08.434"W	0.00	
10717.00†	89.905	180.388	7103.45	3748.89	-3749.03	9.12	40°07'11.808"N	104°38'08.443"W	0.00	
10817.00†	89.905	180.388	7103.62	3848.89	-3849.03	8.44	40°07'10.820"N	104°38'08.451"W	0.00	
10917.00†	89.905	180.388	7103.79	3948.88	-3949.03	7.76	40°07'09.831"N	104°38'08.460"W	0.00	
11017.00†	89.905	180.388	7103.95	4048.88	-4049.03	7.09	40°07'08.843"N	104°38'08.469"W	0.00	
11117.00†	89.905	180.388	7104.12	4148.88	-4149.02	6.41	40°07'07.854"N	104°38'08.477"W	0.00	
11217.00†	89.905	180.388	7104.28	4248.88	-4249.02	5.73	40°07'06.865"N	104°38'08.486"W	0.00	
11317.00†	89.905	180.388	7104.45	4348.88	-4349.02	5.06	40°07'05.877"N	104°38'08.495"W	0.00	
11417.00†	89.905	180.388	7104.62	4448.88	-4449.02	4.38	40°07'04.888"N	104°38'08.504"W	0.00	
11517.00†	89.905	180.388	7104.78	4548.88	-4549.01	3.70	40°07'03.900"N	104°38'08.512"W	0.00	
11617.00†	89.905	180.388	7104.95	4648.88	-4649.01	3.03	40°07'02.911"N	104°38'08.521"W	0.00	
11717.00†	89.905	180.388	7105.11	4748.88	-4749.01	2.35	40°07'01.923"N	104°38'08.530"W	0.00	
11817.00†	89.905	180.388	7105.28	4848.88	-4849.01	1.67	40°07'00.934"N	104°38'08.538"W	0.00	
11917.00†	89.905	180.388	7105.45	4948.88	-4949.00	1.00	40°06'59.945"N	104°38'08.547"W	0.00	
12017.00†	89.905	180.388	7105.61	5048.88	-5049.00	0.32	40°06'58.957"N	104°38'08.556"W	0.00	
12117.00†	89.905	180.388	7105.78	5148.88	-5149.00	-0.36	40°06'57.968"N	104°38'08.565"W	0.00	

REFERENCE WELLPATH IDENTIFICATION			
Operator	KERR-MCGEE OIL & GAS ONSHORE LP_1	Slot	SLOT#05 GE POWERS 3N-26HZ
Area	Compass Import	Well	GE POWERS 3N-26HZ
Field	WELD COUNTY (UTM (ZONE 13)/NAD83/TRUE NORTH)	Wellbore	GE POWERS 3N-26HZ PWB
Facility	2N-65W-23 Offsets		

WELLPATH DATA (137 stations) † = interpolated/extrapolated station										
MD [ft]	Inclination [°]	Azimuth [°]	TVD [ft]	Vert Sect [ft]	North [ft]	East [ft]	Latitude	Longitude	DLS [°/100ft]	Comments
12217.00†	89.905	180.388	7105.94	5248.88	-5249.00	-1.03	40°06'56.980"N	104°38'08.573"W	0.00	
12250.75	89.905	180.388	7106.00†	5282.64	-5282.75	-1.26	40°06'56.646"N	104°38'08.576"W	0.00	TOTAL DEPTH

HOLE & CASING SECTIONS									
- Ref Wellbore: GE POWERS 3N-26HZ PWB					Ref Wellpath: GE POWERS 3N-26HZ (PERMIT REV-2) PWP				
String/Diameter	Start MD [ft]	End MD [ft]	Interval [ft]	Start TVD [ft]	End TVD [ft]	Start N/S [ft]	Start E/W [ft]	End N/S [ft]	End E/W [ft]
13.5in Open Hole	17.00	1400.00	1383.00	17.00	1400.00	0.00	0.00	0.00	0.00
9.625in Casing Surface	17.00	1400.00	1383.00	17.00	1400.00	0.00	0.00	0.00	0.00
7.875in Open Hole	1400.00	12250.75	10850.75	1400.00	7106.00	0.00	0.00	-5282.75	-1.26
5.5in Casing Production	17.00	12250.75	12233.75	17.00	7106.00	0.00	0.00	-5282.75	-1.26

TARGETS									
Name	MD [ft]	TVD [ft]	North [ft]	East [ft]	Grid East [US ft]	Grid North [US ft]	Latitude	Longitude	Shape
GE POWERS 3N-26HZ_SHL		4907.00	0.00	0.00	1742242.14	14574369.00	40°07'48.871"N	104°38'08.560"W	point
SEC.23-T2N-R65W		4907.00	1.11	-120.19	1742121.95	14574369.62	40°07'48.882"N	104°38'10.108"W	polygon
SEC.26-T2N-R65W		4907.00	1.11	-120.19	1742121.95	14574369.62	40°07'48.882"N	104°38'10.108"W	polygon
1) GE POWERS 3N-26HZ_BHL	12250.75	7106.00	-5282.75	-1.26	1742262.53	14569086.30	40°06'56.646"N	104°38'08.576"W	point

SURVEY PROGRAM -									
Ref Wellbore: GE POWERS 3N-26HZ PWB					Ref Wellpath: GE POWERS 3N-26HZ (PERMIT REV-2) PWP				
Start MD [ft]	End MD [ft]	Positional Uncertainty Model					Log Name/Comment	Wellbore	
17.00	12250.75	ISCWSA MWD, Rev. 2, axial magnetic correction (Standard) (MagVAR IFR Wattenberg)						GE POWERS 3N-26HZ PWB	

REFERENCE WELLPATH IDENTIFICATION			
Operator	KERR-MCGEE OIL & GAS ONSHORE LP_1	Slot	SLOT#05 GE POWERS 3N-26HZ
Area	Compass Import	Well	GE POWERS 3N-26HZ
Field	WELD COUNTY (UTM (ZONE 13)/NAD83/TRUE NORTH)	Wellbore	GE POWERS 3N-26HZ PWB
Facility	2N-65W-23 Offsets		

WELLPATH COMMENTS					
MD [ft]	Inclination [°]	Azimuth [°]	TVD [ft]	Comment	
4498.42	0.000	180.388	4491.00	Sussex	
6396.42	0.000	180.388	6389.00	Sharon Springs	
6896.41	36.394	180.388	6865.00	Niobrara Top	
6971.00	43.853	180.388	6922.00	Niobrara B Bench	
7090.60	55.813	180.388	6999.00	Niobrara C Bench	
7431.52	89.905	180.388	7098.00	Top of Production	

DESIGN COMMENTS					
MD [ft]	Inclination [°]	Azimuth [°]	TVD [ft]	Comment	
17.00	0.000	18.000	17.00	TIE-ON	
1500.00	0.000	18.000	1500.00	BEGIN NUDGE	
2000.00	10.000	18.000	1997.47	END NUDGE	
2154.89	10.000	18.000	2150.00	BEGIN DROP	
2654.89	0.000	180.388	2647.47	END DROP	
6532.47	0.000	180.388	6525.05	KOP, BUILD @ 10°/100'	
7431.52	89.905	180.388	7098.00	LANDING POINT	
12250.75	89.905	180.388	7106.00	TOTAL DEPTH	